

KERR-MCGEE OIL & GAS ONSHORE LP

Location: COLORADO Slot: SLOT#57 GOBBLER 13N-23HZ (496'FNL & 279'FEL, SEC.22)
Field: WELD COUNTY (KERR MCGEE) Well: GOBBLER 13N-23HZ
Facility: SEC.22-T2N-R66W Wellbore: GOBBLER 13N-23HZ PWB

Plot reference wellpath is GOBBLER 13N-23HZ (PERMIT) PWP

True vertical depths are referenced to XTREME 6 (RKB)	Grid System: NAD83 / Lambert Colorado SP, Northern Zone (501), US feet
Measured depths are referenced to XTREME 6 (RKB)	North Reference: True north
XTREME 6 (RKB) to Mean Sea Level: 5102 feet	Scale: True distance
Mean Sea Level to Mud line (At Slot: SLOT#57 GOBBLER 13N-23HZ (496'FNL & 279'FEL, SEC.22)): 0 feet	Depths are in feet
Coordinates are in feet referenced to Slot	Created by: wjlsge02 on 3/19/2012

Location Information

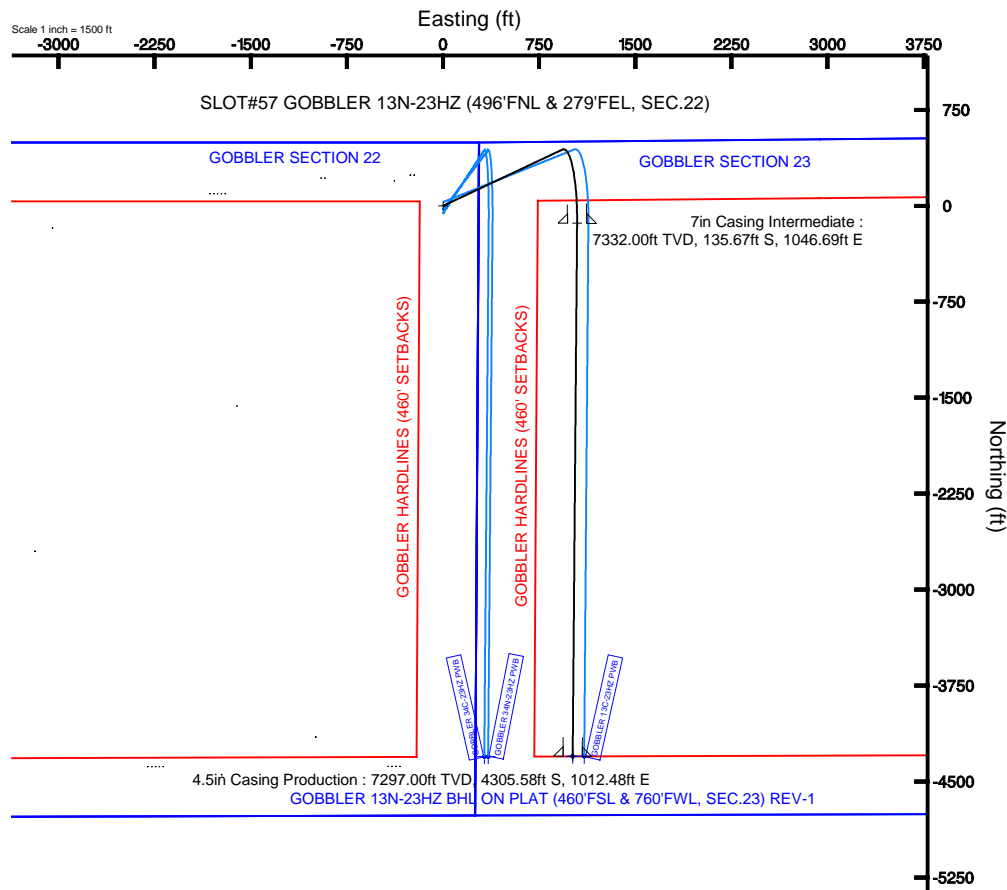
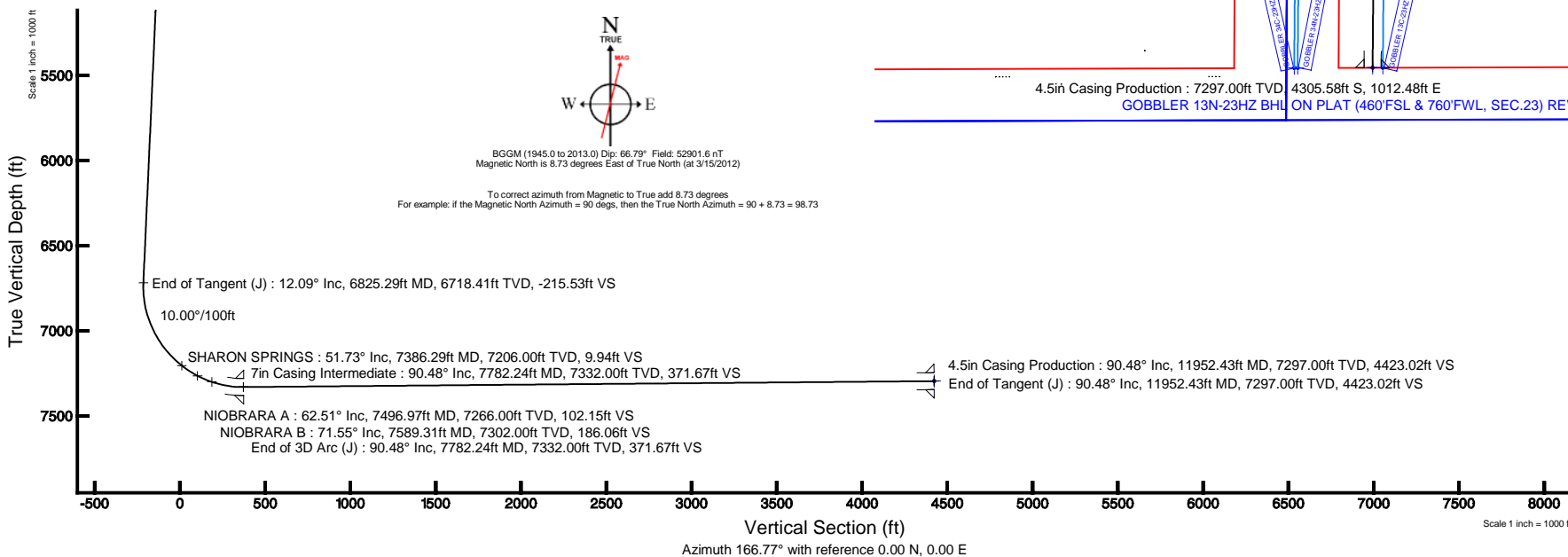
Facility Name			Grid East (US ft)	Grid North (US ft)	Latitude	Longitude
SEC.22-T2N-R66W			3203800.977	1290898.675	40°07'46.600"N	104°46'16.122"W
Slot	Local N (ft)	Local E (ft)	Grid East (US ft)	Grid North (US ft)	Latitude	Longitude
SLOT#57 GOBBLER 13N-23HZ (496'FNL & 279'FEL, SEC.22)	-23.67	4543.73	3208344.556	1290912.354	40°07'46.362"N	104°45'17.626"W
XTREME 6 (RKB) to Mud line (At Slot: SLOT#57 GOBBLER 13N-23HZ (496'FNL & 279'FEL, SEC.22))					5102ft	
Mean Sea Level to Mud line (At Slot: SLOT#57 GOBBLER 13N-23HZ (496'FNL & 279'FEL, SEC.22))					0ft	
XTREME 6 (RKB) to Mean Sea Level					5102ft	

Well Profile Data

Design Comment	MD (ft)	Inc (°)	Az (°)	TVD (ft)	Local N (ft)	Local E (ft)	DLS (°/100ft)	VS (ft)
Tie On	17.00	0.000	64.700	17.00	0.00	0.00	0.00	0.00
End of Tangent	1600.00	0.000	64.700	1600.00	0.00	0.00	0.00	0.00
End of Build (J)	2204.25	12.085	64.700	2199.78	27.13	57.40	2.00	-13.27
End of Tangent (J)	6825.29	12.085	64.700	6718.41	440.59	932.07	0.00	-215.53
End of 3D Arc (J)	7782.24	90.481	180.470	7332.00	-135.67	1046.69	10.00	371.67
End of Tangent (J)	11952.43	90.481	180.470	7297.00	-4305.58	1012.48	0.00	4423.02

Targets

Name	MD (ft)	TVD (ft)	Local N (ft)	Local E (ft)	Grid East (US ft)	Grid North (US ft)	Latitude	Longitude
GOBBLER 1N-23HZ/1N-23HZ/1C-23HZ SECTION LINES		1.00	-4515.03	4472.15	3212864.29	1288435.25	40°07'01.740"N	104°44'20.062"W
GOBBLER SECTION 22		32.00	95.51	-1820.66	3206523.24	1290992.56	40°07'47.305"N	104°45'41.065"W
GOBBLER 1N-23HZ/1C-23HZ HARDLINES (460' SETBACKS)		7235.00	-4515.03	4472.15	3212864.29	1288435.25	40°07'01.740"N	104°44'20.062"W
GOBBLER 13N-23HZ BHL ON PLAT (460'FSL & 760'FWL, SEC.23) REV-1	11952.43	7297.00	-4305.58	1012.48	3209393.13	1286615.62	40°07'03.814"N	104°45'04.594"W
GOBBLER HARDLINES (460' SETBACKS)		7432.00	95.51	-1820.66	3206523.24	1290992.56	40°07'47.305"N	104°45'41.065"W





Planned Wellpath Report

GOBBLER 13N-23HZ (PERMIT) PWP

Page 1 of 5



REFERENCE WELLPATH IDENTIFICATION

Operator	KERR-MCGEE OIL & GAS ONSHORE LP	Slot	SLOT#57 GOBBLER 13N-23HZ (496'FNL & 279'FEL, SEC.22)
Area	COLORADO	Well	GOBBLER 13N-23HZ
Field	WELD COUNTY (KERR MCGEE)	Wellbore	GOBBLER 13N-23HZ PWB
Facility	SEC.22-T2N-R66W		

REPORT SETUP INFORMATION

Projection System	NAD83 / Lambert Colorado SP, Northern Zone (501), US feet	Software System	WellArchitect@ 3.0.2
North Reference	True	User	Wilsjef02
Scale	0.999959	Report Generated	3/19/2012 at 10:14:07
Convergence at slot	0.48° East	Database/Source file	WellArchitectDB/GOBBLER_13N-23HZ_PWB.xml

WELLPATH LOCATION

	Local coordinates		Grid coordinates		Geographic coordinates	
	North[ft]	East[ft]	Easting[US ft]	Northing[US ft]	Latitude	Longitude
Slot Location	-23.67	4543.73	3208344.56	1290912.35	40°07'46.362"N	104°45'17.626"W
Facility Reference Pt			3203800.98	1290898.68	40°07'46.600"N	104°46'16.122"W
Field Reference Pt			3197771.84	1268891.29	40°04'09.600"N	104°47'36.000"W

WELLPATH DATUM

Calculation method	Minimum curvature	XTREME 6 (RKB) to Facility Vertical Datum	5102.00ft
Horizontal Reference Pt	Slot	XTREME 6 (RKB) to Mean Sea Level	5102.00ft
Vertical Reference Pt	XTREME 6 (RKB)	XTREME 6 (RKB) to Mud Line at Slot (SLOT#57 GOBBLER 13N-23HZ (496'FNL & 279'FEL, SEC.22))	5102.00ft
MD Reference Pt	XTREME 6 (RKB)	Section Origin	N 0.00, E 0.00 ft
Field Vertical Reference	Mean Sea Level	Section Azimuth	166.77°



Planned Wellpath Report

GOBBLER 13N-23HZ (PERMIT) PWP

Page 2 of 5



REFERENCE WELLPATH IDENTIFICATION

Operator	KERR-MCGEE OIL & GAS ONSHORE LP	Slot	SLOT#57 GOBBLER 13N-23HZ (496'FNL & 279'FEL, SEC.22)
Area	COLORADO	Well	GOBBLER 13N-23HZ
Field	WELD COUNTY (KERR MCGEE)	Wellbore	GOBBLER 13N-23HZ PWB
Facility	SEC.22-T2N-R66W		

WELLPATH DATA (131 stations) † = interpolated/extrapolated station

MD [ft]	Inclination [°]	Azimuth [°]	TVD [ft]	Vert Sect [ft]	North [ft]	East [ft]	Latitude	Longitude	DLS [°/100ft]	Comments
0.00†	0.000	64.700	0.00	0.00	0.00	0.00	40°07'46.362"N	104°45'17.626"W	0.00	
17.00	0.000	64.700	17.00	0.00	0.00	0.00	40°07'46.362"N	104°45'17.626"W	0.00	Tie On
117.00†	0.000	64.700	117.00	0.00	0.00	0.00	40°07'46.362"N	104°45'17.626"W	0.00	
217.00†	0.000	64.700	217.00	0.00	0.00	0.00	40°07'46.362"N	104°45'17.626"W	0.00	
317.00†	0.000	64.700	317.00	0.00	0.00	0.00	40°07'46.362"N	104°45'17.626"W	0.00	
417.00†	0.000	64.700	417.00	0.00	0.00	0.00	40°07'46.362"N	104°45'17.626"W	0.00	
517.00†	0.000	64.700	517.00	0.00	0.00	0.00	40°07'46.362"N	104°45'17.626"W	0.00	
617.00†	0.000	64.700	617.00	0.00	0.00	0.00	40°07'46.362"N	104°45'17.626"W	0.00	
717.00†	0.000	64.700	717.00	0.00	0.00	0.00	40°07'46.362"N	104°45'17.626"W	0.00	
817.00†	0.000	64.700	817.00	0.00	0.00	0.00	40°07'46.362"N	104°45'17.626"W	0.00	
917.00†	0.000	64.700	917.00	0.00	0.00	0.00	40°07'46.362"N	104°45'17.626"W	0.00	
1017.00†	0.000	64.700	1017.00	0.00	0.00	0.00	40°07'46.362"N	104°45'17.626"W	0.00	
1117.00†	0.000	64.700	1117.00	0.00	0.00	0.00	40°07'46.362"N	104°45'17.626"W	0.00	
1217.00†	0.000	64.700	1217.00	0.00	0.00	0.00	40°07'46.362"N	104°45'17.626"W	0.00	
1317.00†	0.000	64.700	1317.00	0.00	0.00	0.00	40°07'46.362"N	104°45'17.626"W	0.00	
1417.00†	0.000	64.700	1417.00	0.00	0.00	0.00	40°07'46.362"N	104°45'17.626"W	0.00	
1517.00†	0.000	64.700	1517.00	0.00	0.00	0.00	40°07'46.362"N	104°45'17.626"W	0.00	
1600.00	0.000	64.700	1600.00	0.00	0.00	0.00	40°07'46.362"N	104°45'17.626"W	0.00	End of Tangent
1617.00†	0.340	64.700	1617.00	-0.01	0.02	0.05	40°07'46.362"N	104°45'17.625"W	2.00	
1717.00†	2.340	64.700	1716.97	-0.50	1.02	2.16	40°07'46.372"N	104°45'17.598"W	2.00	
1817.00†	4.340	64.700	1816.79	-1.72	3.51	7.43	40°07'46.397"N	104°45'17.530"W	2.00	
1917.00†	6.340	64.700	1916.35	-3.66	7.49	15.84	40°07'46.436"N	104°45'17.422"W	2.00	
2017.00†	8.340	64.700	2015.53	-6.33	12.95	27.39	40°07'46.490"N	104°45'17.273"W	2.00	
2117.00†	10.340	64.700	2114.20	-9.73	19.88	42.06	40°07'46.558"N	104°45'17.084"W	2.00	
2204.25	12.085	64.700	2199.78	-13.27	27.13	57.40	40°07'46.630"N	104°45'16.887"W	2.00	End of Build (J)
2217.00†	12.085	64.700	2212.25	-13.83	28.27	59.81	40°07'46.641"N	104°45'16.856"W	0.00	
2317.00†	12.085	64.700	2310.03	-18.21	37.22	78.74	40°07'46.730"N	104°45'16.612"W	0.00	
2417.00†	12.085	64.700	2407.81	-22.58	46.17	97.67	40°07'46.818"N	104°45'16.369"W	0.00	
2517.00†	12.085	64.700	2505.60	-26.96	55.12	116.60	40°07'46.907"N	104°45'16.125"W	0.00	
2617.00†	12.085	64.700	2603.38	-31.34	64.06	135.53	40°07'46.995"N	104°45'15.881"W	0.00	
2717.00†	12.085	64.700	2701.17	-35.72	73.01	154.45	40°07'47.083"N	104°45'15.638"W	0.00	
2817.00†	12.085	64.700	2798.95	-40.09	81.96	173.38	40°07'47.172"N	104°45'15.394"W	0.00	
2917.00†	12.085	64.700	2896.73	-44.47	90.90	192.31	40°07'47.260"N	104°45'15.150"W	0.00	
3017.00†	12.085	64.700	2994.52	-48.85	99.85	211.24	40°07'47.349"N	104°45'14.907"W	0.00	
3117.00†	12.085	64.700	3092.30	-53.22	108.80	230.17	40°07'47.437"N	104°45'14.663"W	0.00	
3217.00†	12.085	64.700	3190.09	-57.60	117.75	249.09	40°07'47.526"N	104°45'14.419"W	0.00	
3317.00†	12.085	64.700	3287.87	-61.98	126.69	268.02	40°07'47.614"N	104°45'14.175"W	0.00	
3417.00†	12.085	64.700	3385.65	-66.35	135.64	286.95	40°07'47.702"N	104°45'13.932"W	0.00	
3517.00†	12.085	64.700	3483.44	-70.73	144.59	305.88	40°07'47.791"N	104°45'13.688"W	0.00	
3617.00†	12.085	64.700	3581.22	-75.11	153.54	324.81	40°07'47.879"N	104°45'13.444"W	0.00	
3717.00†	12.085	64.700	3679.00	-79.48	162.48	343.73	40°07'47.968"N	104°45'13.201"W	0.00	
3817.00†	12.085	64.700	3776.79	-83.86	171.43	362.66	40°07'48.056"N	104°45'12.957"W	0.00	
3917.00†	12.085	64.700	3874.57	-88.24	180.38	381.59	40°07'48.144"N	104°45'12.713"W	0.00	
4017.00†	12.085	64.700	3972.36	-92.61	189.32	400.52	40°07'48.233"N	104°45'12.470"W	0.00	
4117.00†	12.085	64.700	4070.14	-96.99	198.27	419.45	40°07'48.321"N	104°45'12.226"W	0.00	
4217.00†	12.085	64.700	4167.92	-101.37	207.22	438.37	40°07'48.410"N	104°45'11.982"W	0.00	
4317.00†	12.085	64.700	4265.71	-105.74	216.17	457.30	40°07'48.498"N	104°45'11.739"W	0.00	
4342.87†	12.085	64.700	4291.00	-106.88	218.48	462.20	40°07'48.521"N	104°45'11.676"W	0.00	PARKMAN
4417.00†	12.085	64.700	4363.49	-110.12	225.11	476.23	40°07'48.587"N	104°45'11.495"W	0.00	
4517.00†	12.085	64.700	4461.27	-114.50	234.06	495.16	40°07'48.675"N	104°45'11.251"W	0.00	
4617.00†	12.085	64.700	4559.06	-118.88	243.01	514.09	40°07'48.763"N	104°45'11.008"W	0.00	
4717.00†	12.085	64.700	4656.84	-123.25	251.96	533.02	40°07'48.852"N	104°45'10.764"W	0.00	
4727.39†	12.085	64.700	4667.00	-123.71	252.88	534.98	40°07'48.861"N	104°45'10.739"W	0.00	SUSSEX
4817.00†	12.085	64.700	4754.63	-127.63	260.90	551.94	40°07'48.940"N	104°45'10.520"W	0.00	
4917.00†	12.085	64.700	4852.41	-132.01	269.85	570.87	40°07'49.029"N	104°45'10.277"W	0.00	
5017.00†	12.085	64.700	4950.19	-136.38	278.80	589.80	40°07'49.117"N	104°45'10.033"W	0.00	
5117.00†	12.085	64.700	5047.98	-140.76	287.74	608.73	40°07'49.205"N	104°45'09.789"W	0.00	
5217.00†	12.085	64.700	5145.76	-145.14	296.69	627.66	40°07'49.294"N	104°45'09.545"W	0.00	
5317.00†	12.085	64.700	5243.55	-149.51	305.64	646.58	40°07'49.382"N	104°45'09.302"W	0.00	
5417.00†	12.085	64.700	5341.33	-153.89	314.59	665.51	40°07'49.471"N	104°45'09.058"W	0.00	



Planned Wellpath Report

GOBBLER 13N-23HZ (PERMIT) PWP
Page 3 of 5



REFERENCE WELLPATH IDENTIFICATION

Operator	KERR-MCGEE OIL & GAS ONSHORE LP	Slot	SLOT#57 GOBBLER 13N-23HZ (496'FNL & 279'FEL, SEC.22)
Area	COLORADO	Well	GOBBLER 13N-23HZ
Field	WELD COUNTY (KERR MCGEE)	Wellbore	GOBBLER 13N-23HZ PWB
Facility	SEC.22-T2N-R66W		

WELLPATH DATA (131 stations) † = interpolated/extrapolated station

MD [ft]	Inclination [°]	Azimuth [°]	TVD [ft]	Vert Sect [ft]	North [ft]	East [ft]	Latitude	Longitude	DLS [°/100ft]	Comments
5517.00†	12.085	64.700	5439.11	-158.27	323.53	684.44	40°07'49.559"N	104°45'08.814"W	0.00	
5617.00†	12.085	64.700	5536.90	-162.64	332.48	703.37	40°07'49.648"N	104°45'08.571"W	0.00	
5717.00†	12.085	64.700	5634.68	-167.02	341.43	722.30	40°07'49.736"N	104°45'08.327"W	0.00	
5817.00†	12.085	64.700	5732.46	-171.40	350.38	741.22	40°07'49.824"N	104°45'08.083"W	0.00	
5917.00†	12.085	64.700	5830.25	-175.77	359.32	760.15	40°07'49.913"N	104°45'07.840"W	0.00	
6017.00†	12.085	64.700	5928.03	-180.15	368.27	779.08	40°07'50.001"N	104°45'07.596"W	0.00	
6117.00†	12.085	64.700	6025.82	-184.53	377.22	798.01	40°07'50.090"N	104°45'07.352"W	0.00	
6217.00†	12.085	64.700	6123.60	-188.90	386.16	816.94	40°07'50.178"N	104°45'07.109"W	0.00	
6317.00†	12.085	64.700	6221.38	-193.28	395.11	835.87	40°07'50.266"N	104°45'06.865"W	0.00	
6417.00†	12.085	64.700	6319.17	-197.66	404.06	854.79	40°07'50.355"N	104°45'06.621"W	0.00	
6517.00†	12.085	64.700	6416.95	-202.04	413.01	873.72	40°07'50.443"N	104°45'06.378"W	0.00	
6617.00†	12.085	64.700	6514.73	-206.41	421.95	892.65	40°07'50.532"N	104°45'06.134"W	0.00	
6717.00†	12.085	64.700	6612.52	-210.79	430.90	911.58	40°07'50.620"N	104°45'05.890"W	0.00	
6817.00†	12.085	64.700	6710.30	-215.17	439.85	930.51	40°07'50.708"N	104°45'05.646"W	0.00	
6825.29	12.085	64.700	6718.41	-215.53	440.59	932.07	40°07'50.716"N	104°45'05.626"W	0.00	End of Tangent (J)
6917.00†	11.611	110.476	6808.36	-212.41	441.47	949.44	40°07'50.724"N	104°45'05.403"W	10.00	
7017.00†	17.662	143.076	6905.22	-192.88	425.78	968.03	40°07'50.569"N	104°45'05.163"W	10.00	
7117.00†	26.203	157.292	6997.96	-157.12	393.20	985.71	40°07'50.247"N	104°45'04.936"W	10.00	
7217.00†	35.477	164.668	7083.76	-106.22	344.73	1001.94	40°07'49.768"N	104°45'04.727"W	10.00	
7317.00†	45.032	169.264	7160.01	-41.71	281.82	1016.24	40°07'49.147"N	104°45'04.543"W	10.00	
7386.29†	51.733	171.622	7206.00	9.94	230.77	1024.78	40°07'48.642"N	104°45'04.433"W	10.00	SHARON SPRINGS
7417.00†	54.718	172.530	7224.38	34.43	206.41	1028.17	40°07'48.402"N	104°45'04.389"W	10.00	
7496.97†	62.514	174.615	7266.00	102.15	138.62	1035.75	40°07'47.732"N	104°45'04.292"W	10.00	NIOBRARA A
7517.00†	64.472	175.090	7274.94	119.90	120.77	1037.36	40°07'47.555"N	104°45'04.271"W	10.00	
7589.31†	71.550	176.686	7302.00	186.06	53.93	1042.14	40°07'46.895"N	104°45'04.209"W	10.00	NIOBRARA B
7617.00†	74.264	177.260	7310.14	212.10	27.51	1043.54	40°07'46.634"N	104°45'04.191"W	10.00	
7717.00†	84.076	179.230	7328.91	308.23	-70.54	1046.52	40°07'45.665"N	104°45'04.153"W	10.00	
7782.24	90.481	180.470	7332.00	371.67	-135.67	1046.69	40°07'45.021"N	104°45'04.151"W	10.00	End of 3D Arc (J)
7817.00†	90.481	180.470	7331.71	405.44	-170.43	1046.40	40°07'44.678"N	104°45'04.155"W	0.00	
7917.00†	90.481	180.470	7330.87	502.59	-270.42	1045.58	40°07'43.689"N	104°45'04.165"W	0.00	
8017.00†	90.481	180.470	7330.03	599.74	-370.42	1044.76	40°07'42.701"N	104°45'04.176"W	0.00	
8117.00†	90.481	180.470	7329.19	696.89	-470.41	1043.94	40°07'41.713"N	104°45'04.187"W	0.00	
8217.00†	90.481	180.470	7328.35	794.04	-570.40	1043.12	40°07'40.725"N	104°45'04.197"W	0.00	
8317.00†	90.481	180.470	7327.51	891.19	-670.40	1042.30	40°07'39.737"N	104°45'04.208"W	0.00	
8417.00†	90.481	180.470	7326.68	988.34	-770.39	1041.48	40°07'38.749"N	104°45'04.218"W	0.00	
8517.00†	90.481	180.470	7325.84	1085.49	-870.38	1040.66	40°07'37.761"N	104°45'04.229"W	0.00	
8617.00†	90.481	180.470	7325.00	1182.64	-970.38	1039.84	40°07'36.772"N	104°45'04.240"W	0.00	
8717.00†	90.481	180.470	7324.16	1279.79	-1070.37	1039.02	40°07'35.784"N	104°45'04.250"W	0.00	
8817.00†	90.481	180.470	7323.32	1376.94	-1170.36	1038.20	40°07'34.796"N	104°45'04.261"W	0.00	
8917.00†	90.481	180.470	7322.48	1474.09	-1270.36	1037.38	40°07'33.808"N	104°45'04.271"W	0.00	
9017.00†	90.481	180.470	7321.64	1571.24	-1370.35	1036.56	40°07'32.820"N	104°45'04.282"W	0.00	
9117.00†	90.481	180.470	7320.80	1668.39	-1470.34	1035.74	40°07'31.832"N	104°45'04.293"W	0.00	
9217.00†	90.481	180.470	7319.96	1765.54	-1570.34	1034.92	40°07'30.844"N	104°45'04.303"W	0.00	
9317.00†	90.481	180.470	7319.12	1862.69	-1670.33	1034.10	40°07'29.855"N	104°45'04.314"W	0.00	
9417.00†	90.481	180.470	7318.28	1959.84	-1770.32	1033.28	40°07'28.867"N	104°45'04.325"W	0.00	
9517.00†	90.481	180.470	7317.44	2056.99	-1870.31	1032.46	40°07'27.879"N	104°45'04.335"W	0.00	
9617.00†	90.481	180.470	7316.60	2154.14	-1970.31	1031.64	40°07'26.891"N	104°45'04.346"W	0.00	
9717.00†	90.481	180.470	7315.76	2251.29	-2070.30	1030.82	40°07'25.903"N	104°45'04.356"W	0.00	
9817.00†	90.481	180.470	7314.92	2348.44	-2170.29	1030.00	40°07'24.915"N	104°45'04.367"W	0.00	
9917.00†	90.481	180.470	7314.08	2445.59	-2270.29	1029.18	40°07'23.927"N	104°45'04.378"W	0.00	
10017.00†	90.481	180.470	7313.25	2542.74	-2370.28	1028.36	40°07'22.938"N	104°45'04.388"W	0.00	
10117.00†	90.481	180.470	7312.41	2639.90	-2470.27	1027.53	40°07'21.950"N	104°45'04.399"W	0.00	
10217.00†	90.481	180.470	7311.57	2737.05	-2570.27	1026.71	40°07'20.962"N	104°45'04.409"W	0.00	
10317.00†	90.481	180.470	7310.73	2834.20	-2670.26	1025.89	40°07'19.974"N	104°45'04.420"W	0.00	
10417.00†	90.481	180.470	7309.89	2931.35	-2770.25	1025.07	40°07'18.986"N	104°45'04.431"W	0.00	
10517.00†	90.481	180.470	7309.05	3028.50	-2870.25	1024.25	40°07'17.998"N	104°45'04.441"W	0.00	
10617.00†	90.481	180.470	7308.21	3125.65	-2970.24	1023.43	40°07'17.010"N	104°45'04.452"W	0.00	
10717.00†	90.481	180.470	7307.37	3222.80	-3070.23	1022.61	40°07'16.021"N	104°45'04.463"W	0.00	
10817.00†	90.481	180.470	7306.53	3319.95	-3170.23	1021.79	40°07'15.033"N	104°45'04.473"W	0.00	
10917.00†	90.481	180.470	7305.69	3417.10	-3270.22	1020.97	40°07'14.045"N	104°45'04.484"W	0.00	



Planned Wellpath Report

GOBBLER 13N-23HZ (PERMIT) PWP

Page 4 of 5



REFERENCE WELLPATH IDENTIFICATION

Operator	KERR-MCGEE OIL & GAS ONSHORE LP	Slot	SLOT#57 GOBBLER 13N-23HZ (496'FNL & 279'FEL, SEC.22)
Area	COLORADO	Well	GOBBLER 13N-23HZ
Field	WELD COUNTY (KERR MCGEE)	Wellbore	GOBBLER 13N-23HZ PWB
Facility	SEC.22-T2N-R66W		

WELLPATH DATA (131 stations) † = interpolated/extrapolated station

MD [ft]	Inclination [°]	Azimuth [°]	TVD [ft]	Vert Sect [ft]	North [ft]	East [ft]	Latitude	Longitude	DLS [°/100ft]	Comments
11017.00†	90.481	180.470	7304.85	3514.25	-3370.21	1020.15	40°07'13.057"N	104°45'04.494"W	0.00	
11117.00†	90.481	180.470	7304.01	3611.40	-3470.20	1019.33	40°07'12.069"N	104°45'04.505"W	0.00	
11217.00†	90.481	180.470	7303.17	3708.55	-3570.20	1018.51	40°07'11.081"N	104°45'04.516"W	0.00	
11317.00†	90.481	180.470	7302.33	3805.70	-3670.19	1017.69	40°07'10.093"N	104°45'04.526"W	0.00	
11417.00†	90.481	180.470	7301.49	3902.85	-3770.18	1016.87	40°07'09.104"N	104°45'04.537"W	0.00	
11517.00†	90.481	180.470	7300.65	4000.00	-3870.18	1016.05	40°07'08.116"N	104°45'04.547"W	0.00	
11617.00†	90.481	180.470	7299.82	4097.15	-3970.17	1015.23	40°07'07.128"N	104°45'04.558"W	0.00	
11717.00†	90.481	180.470	7298.98	4194.30	-4070.16	1014.41	40°07'06.140"N	104°45'04.569"W	0.00	
11817.00†	90.481	180.470	7298.14	4291.45	-4170.16	1013.59	40°07'05.152"N	104°45'04.579"W	0.00	
11917.00†	90.481	180.470	7297.30	4388.60	-4270.15	1012.77	40°07'04.164"N	104°45'04.590"W	0.00	
11952.43	90.481	180.470	7297.00 ¹	4423.02	-4305.58	1012.48	40°07'03.814"N	104°45'04.594"W	0.00	End of Tangent (J)

HOLE & CASING SECTIONS - Ref Wellbore: GOBBLER 13N-23HZ PWB Ref Wellpath: GOBBLER 13N-23HZ (PERMIT) PWP

String/Diameter	Start MD [ft]	End MD [ft]	Interval [ft]	Start TVD [ft]	End TVD [ft]	Start N/S [ft]	Start E/W [ft]	End N/S [ft]	End E/W [ft]
13.5in Open Hole	17.00	1000.00	983.00	17.00	1000.00	0.00	0.00	0.00	0.00
9.625in Casing Surface	17.00	1000.00	983.00	17.00	1000.00	0.00	0.00	0.00	0.00
8.75in Open Hole	1000.00	7782.24	6782.24	1000.00	7332.00	0.00	0.00	-135.67	1046.69
7in Casing Intermediate	17.00	7782.24	7765.24	17.00	7332.00	0.00	0.00	-135.67	1046.69
6.125in Open Hole	7782.24	11952.43	4170.19	7332.00	7297.00	-135.67	1046.69	-4305.58	1012.48
4.5in Casing Production	17.00	11952.43	11935.43	17.00	7297.00	0.00	0.00	-4305.58	1012.48

TARGETS

Name	MD [ft]	TVD [ft]	North [ft]	East [ft]	Grid East [US ft]	Grid North [US ft]	Latitude	Longitude	Shape
GOBBLER 1N-23HZ/1N-23HZ/1C-23HZ SECTION LINES		-1.00	-4515.03	4472.15	3212854.29	1286435.25	40°07'01.740"N	104°44'20.062"W	polygon
GOBBLER SECTION 22		32.00	95.51	-1820.66	3206523.24	1290992.56	40°07'47.305"N	104°45'41.065"W	polygon
GOBBLER 1N-23HZ/1C-23HZ HARDLINES (460' SETBACKS)		7235.00	-4515.03	4472.15	3212854.29	1286435.25	40°07'01.740"N	104°44'20.062"W	polygon
1) GOBBLER 13N-23HZ BHL ON PLAT (460'FSL & 760'FWL, SEC.23) REV-1	11952.43	7297.00	-4305.58	1012.48	3209393.13	1286615.62	40°07'03.814"N	104°45'04.594"W	point
GOBBLER HARDLINES (460' SETBACKS)		7432.00	95.51	-1820.66	3206523.24	1290992.56	40°07'47.305"N	104°45'41.065"W	polygon

SURVEY PROGRAM - Ref Wellbore: GOBBLER 13N-23HZ PWB Ref Wellpath: GOBBLER 13N-23HZ (PERMIT) PWP

Start MD [ft]	End MD [ft]	Positional Uncertainty Model	Log Name/Comment	Wellbore
17.00	11952.43	NaviTrak (Standard)		GOBBLER 13N-23HZ PWB



Planned Wellpath Report

GOBBLER 13N-23HZ (PERMIT) PWP

Page 5 of 5



REFERENCE WELLPATH IDENTIFICATION

Operator	KERR-MCGEE OIL & GAS ONSHORE LP	Slot	SLOT#57 GOBBLER 13N-23HZ (496'FNL & 279'FEL, SEC.22)
Area	COLORADO	Well	GOBBLER 13N-23HZ
Field	WELD COUNTY (KERR MCGEE)	Wellbore	GOBBLER 13N-23HZ PWB
Facility	SEC.22-T2N-R66W		

WELLPATH COMMENTS

MD [ft]	Inclination [°]	Azimuth [°]	TVD [ft]	Comment
4342.87	12.085	64.700	4291.00	PARKMAN
4727.39	12.085	64.700	4667.00	SUSSEX
7386.29	51.733	171.622	7206.00	SHARON SPRINGS
7496.97	62.514	174.615	7266.00	NIOBRARA A
7589.31	71.550	176.686	7302.00	NIOBRARA B