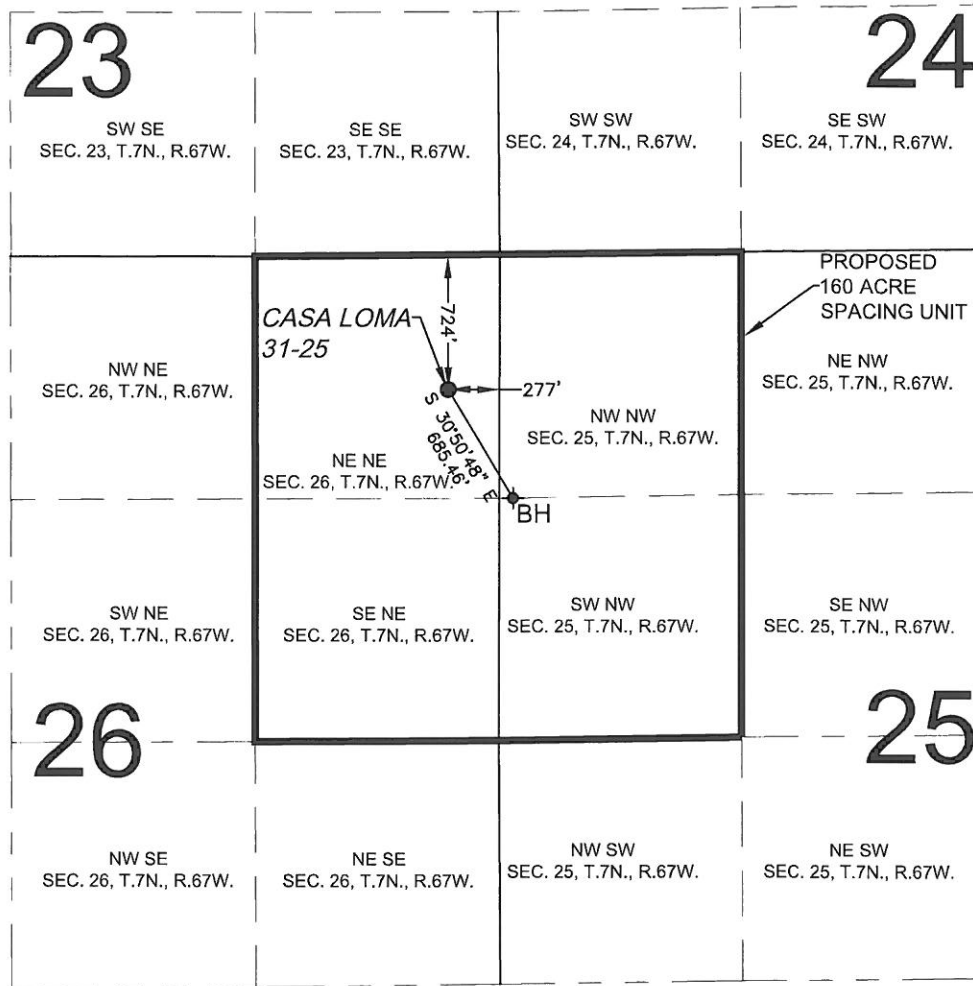


PROPOSED 318 Ae SPACING UNIT

SECTION 25, TOWNSHIP 7 NORTH, RANGE 67 WEST, 6TH P.M.



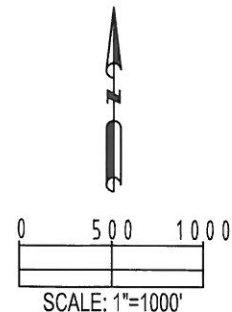
WELL CASA LOMA 31-25 TO BE LOCATED 724' FNL AND 277' FEL, T7N, R67W, SEC. 26

SURFACE LOCATION
 LATITUDE= 40.550380°
 LONGITUDE= 104.851892°

BOTTOM HOLE LOCATION
 LATITUDE= 40.548758°
 LONGITUDE= 104.850643°

LEGEND

- ◆ = BOTTOM HOLE BH = BOTTOM HOLE
 ● = PROPOSED WELL ◆ = EXISTING WELL



PREPARED BY PFS Petroleum Field Services, LLC 1601 W. 13th Ave. Denver, CO 80204	FIELD DATE: 05-21-12	SURFACE LOCATION: NE 1/4 NE 1/4, SEC. 26, T7N, R67W, 6TH P.M. WELD COUNTY, COLORADO
	DRAWING DATE: 08-21-12	
BY: CLM	CHECKED BY: JAH	