

***BILL BARRETT CORPORATION E-BILL
DO NOT MAIL-1099 18TH ST,STE 2300W
DENVER, Colorado***

Dutch Lake
Dutch Lake 24-22H

H & P/278

Post Job Summary

Cement Intermediate Casing

Date Prepared: 10/16/2012
Version: 1

Service Supervisor: VIGIL, NICHOLAS

Submitted by: MCKAY, ADAM

HALLIBURTON

HALLIBURTON

Wellbore Geometry

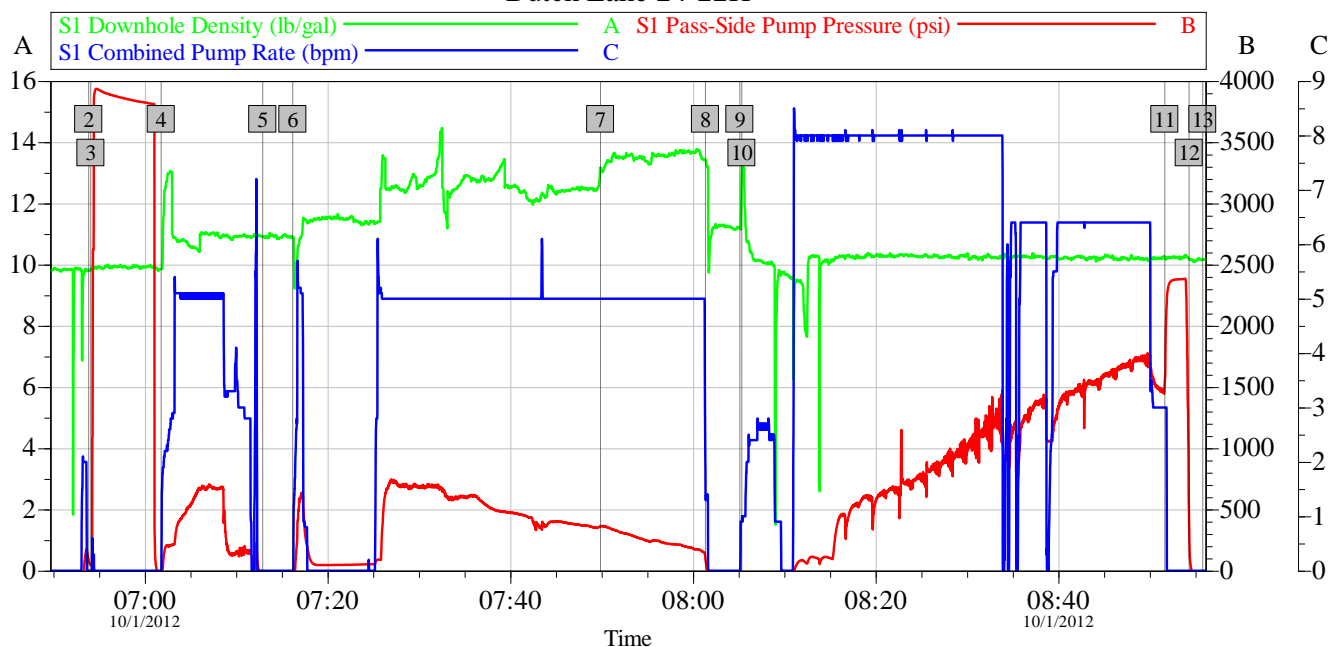
Job Tubulars					MD		TVD		Excess	Shoe Joint Length
Type	Description	Size in	ID in	Wt lbm/ft	Top ft	Bottom ft	Top ft	Bottom ft	%	ft
Open Hole Section	Open Hole Section		8.750		880.00	6,957.00	880.00	6,957.00		
Casing	Surface Casing	9.63	8.921	36.00	0.00	880.00	0.00	880.00		0.00
Casing	Intermediate Casing	7.00	6.276	26.00	0.00	6,957.00	0.00	6,957.00		

Pumping Schedule

Stage /Plug #	Fluid #	Fluid Type	Fluid Name	Surface Density lbm/gal	Avg Rate bbl/min	Surface Volume	Downhole Volume
1	1	Spacer	TUNED SPACER III	11.00	5.00	40.0 bbl	40.0 bbl
1	2	Cement Slurry	Econocem B2 12.5#	12.50	5.00	400.0 sacks	400.0 sacks
1	3	Cement Slurry	Fraccem 13.5#	13.50	5.00	230.0 sacks	230.0 sacks

Data Acquisition

Bill Barrett
Dutch Lake 24-22H



Global Event Log

2 Start Job	06:53:51	3 Test Lines	06:54:05	4 Pump Spacer 1	07:01:47
5 Drop Bottom Plug	07:12:54	6 Pump Lead Cement	07:16:11	7 Pump Tail Cement	07:49:53
8 Shutdown	08:01:21	9 Drop Top Plug	08:05:08	10 Pump Displacement	08:05:21
11 Bump Plug	08:51:38	12 Check Floats	08:54:18	13 End Job	08:55:48

Customer:	Job Date: 01-Oct-2012	Sales Order #: 9848037
Well Description:	UWI:	

OptiCem v6.4.10
16-Oct-12 11:15

Service Supervisor Reports

Job Log

Date/Time	Chart #	Activity Code	Pump Rate	Cum Vol	Pump		Pressure (psig)	Comments
10/01/2012 04:00		Arrive At Loc						HAZARD HUNT, WELL SITE ASSESMENT, WATER TEST, PRE RIG UP SAFETY MEETING
10/01/2012 06:53		Start Job						PRE JOB SAFETY MEETING
10/01/2012 06:54		Test Lines						PRESSURE TESTED LINES TO 3500 PSI
10/01/2012 07:01		Pump Spacer 1	5	40			700.0	MIXED TUNED SPACER AT 11 PPG
10/01/2012 07:12		Drop Bottom Plug						PLUG WAS PRE LOADED
10/01/2012 07:16		Pump Lead Cement	5	134.6			395.0	MIXED ECONOCEM AT 12.5 PPG (400 SKS)
10/01/2012 07:49		Pump Tail Cement	5	66.7			246.0	MIXED FRACCEM AT 13.5 PPG (230 SKS)
10/01/2012 08:01		Shutdown						
10/01/2012 08:05		Drop Top Plug						PLUG WAS PRE LOADED
10/01/2012 08:05		Pump Displacement	8	262			1092.0	DISPLACED USING 10.5 PPG RIG MUD
10/01/2012 08:51		Bump Plug	3	262			1561.0	CALCULATED PRESSURE TO LAND WAS 448 PSI/+ 500 OVER
10/01/2012 08:54		Check Floats						FLOATS HELD
10/01/2012 08:55		End Job						RIG DOWN SAFETY MEETING

HALLIBURTON

The Road to Excellence Starts with Safety

Sold To #: 343492		Ship To #: 2951589		Quote #:		Sales Order #: 9848037	
Customer: BILL BARRETT CORPORATION E-BILL				Customer Rep: Boyd, Jim			
Well Name: Dutch Lake			Well #: 24-22H			API/UWI #:	
Field: WATTENBERG		City (SAP): GILL		County/Parish: Weld		State: Colorado	
Contractor: H & P			Rig/Platform Name/Num: 278				
Job Purpose: Cement Intermediate Casing							
Well Type: Development Well				Job Type: Cement Intermediate Casing			
Sales Person: AARON, WESLEY			Srvc Supervisor: VIGIL, NICHOLAS			MBU ID Emp #: 443481	

Job Personnel

HES Emp Name	Exp Hrs	Emp #	HES Emp Name	Exp Hrs	Emp #	HES Emp Name	Exp Hrs	Emp #
HALE, ROBERT E	12.5	470588	HINKLE, BRADLEY Dean	12.5	512123	MILLER, GEOFFREY Alan	12.5	460232
VIGIL, NICHOLAS Joseph	0.0	443481						

Equipment

HES Unit #	Distance-1 way	HES Unit #	Distance-1 way	HES Unit #	Distance-1 way	HES Unit #	Distance-1 way
10829456	60 mile	10857012C	60 mile	11036295C	60 mile	11748359	60 mile
11812069C	60 mile	5707C	60 mile	NA	60 mile		

Job Hours

Date	On Location Hours	Operating Hours	Date	On Location Hours	Operating Hours	Date	On Location Hours	Operating Hours
TOTAL			Total is the sum of each column separately					

Job

Formation Name	Formation Depth (MD)	Top	Bottom	Form Type	Job depth MD	Job Depth TVD	Water Depth	Perforation Depth (MD)	From	To
				BHST	6957. ft	6957. ft				
							Wk Ht Above Floor			
								Deparated Loc	01 - Oct - 2012	11:00

Job Times

Date	Time	Time Zone
30 - Sep - 2012	23:00	MST
01 - Oct - 2012	04:00	MST
01 - Oct - 2012	06:54	MST
01 - Oct - 2012	08:55	MST

Well Data

Description	New / Used	Max pressure psig	Size in	ID in	Weight lbm/ft	Thread	Grade	Top MD ft	Bottom MD ft	Top TVD ft	Bottom TVD ft
Open Hole Section				8.75				880.	6957.	880.	6957.
Intermediate Casing	Unknown		7.	6.276	26.			.	6957.	.	6957.
Surface Casing	Unknown		9.625	8.921	36.			.	880.	.	880.

Tools and Accessories

Type	Size	Qty	Make	Depth	Type	Size	Qty	Make	Depth	Type	Size	Qty	Make
Guide Shoe					Packer					Top Plug			
Float Shoe					Bridge Plug					Bottom Plug			
Float Collar					Retainer					SSR plug set			
Insert Float										Plug Container			
Stage Tool										Centralizers			

Miscellaneous Materials

Gelling Agt	Conc	Surfactant	Conc	Acid Type	Qty	Conc	%
Treatment Fld	Conc	Inhibitor	Conc	Sand Type	Size	Qty	

Fluid Data

HALLIBURTON

Stage/Plug #: 1										
Fluid #	Stage Type	Fluid Name	Qty	Qty uom	Mixing Density lbm/gal	Yield ft ³ /sk	Mix Fluid Gal/sk	Rate bbl/min	Total Mix Fluid Gal/sk	
1	TUNED SPACER III	TUNED SPACER III - SBM (483826)	40.00	bbl	11.	6.74	42.3	5.0		
		36.83 gal/bbl	FRESH WATER							
		117.6 lbm/bbl	BARITE, 100 LB SK (100003680)							
2	Econocem B2 12.5#	ECONOCHEM (TM) SYSTEM (452992)	400.0	sacks	12.5	1.89	10.3	5.0	10.3	
		10.3 Gal	FRESH WATER							
3	Fraccem 13.5#	FRACCEM (TM) SYSTEM (452963)	230.0	sacks	13.5	1.63	7.77	5.0	7.77	
		7.765 Gal	FRESH WATER							
4	DISPLACEMENT			bbl	8.33			5.0		
Calculated Values		Pressures		Volumes						
Displacement		Shut In: Instant		Lost Returns		Cement Slurry		Pad		
Top Of Cement		5 Min		Cement Returns		Actual Displacement		Treatment		
Frac Gradient		15 Min		Spacers		Load and Breakdown		Total Job		
Rates										
Circulating		Mixing		Displacement		Avg. Job				
Cement Left In Pipe	Amount	0 ft	Reason	Shoe Joint						
Frac Ring # 1 @	ID	Frac ring # 2 @	ID	Frac Ring # 3 @	ID	Frac Ring # 4 @	ID			
The Information Stated Herein Is Correct				Customer Representative Signature						