

# KERR-MCGEE OIL & GAS ONSHORE LP

Location: COLORADO Slot: SLOT#55 GOBBLER 34C-23HZ (556°FNL & 279°FEL, SEC.22)  
Field: WELD COUNTY (KERR MCGEE) Well: GOBBLER 34C-23HZ  
Facility: SEC.22-T2N-R66W Wellbore: GOBBLER 34C-23HZ PWB

Plot reference wellpath is GOBBLER 34C-23HZ (PERMIT) PWP

True vertical depths are referenced to XTREME 6 (RKB)	Grid System: NAD83 / Lambert Colorado SP, Northern Zone (501), US feet
Measured depths are referenced to XTREME 6 (RKB)	North Reference: True north
XTREME 6 (RKB) to Mean Sea Level: 5102 feet	Scale: True distance
Mean Sea Level to Mud line (At Slot: SLOT#55 GOBBLER 34C-23HZ (556°FNL & 279°FEL, SEC.22)): 0 feet	Depths are in feet
Coordinates are in feet referenced to Slot	Created by: wiljel02 on 3/19/2012

## Location Information

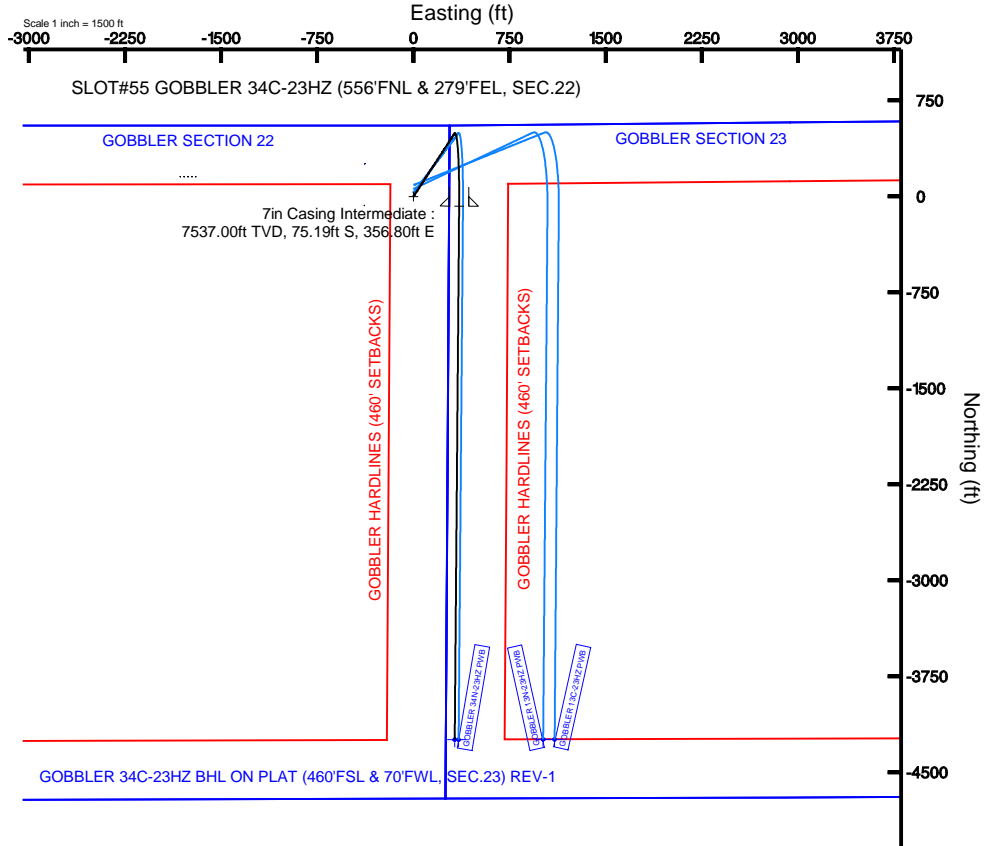
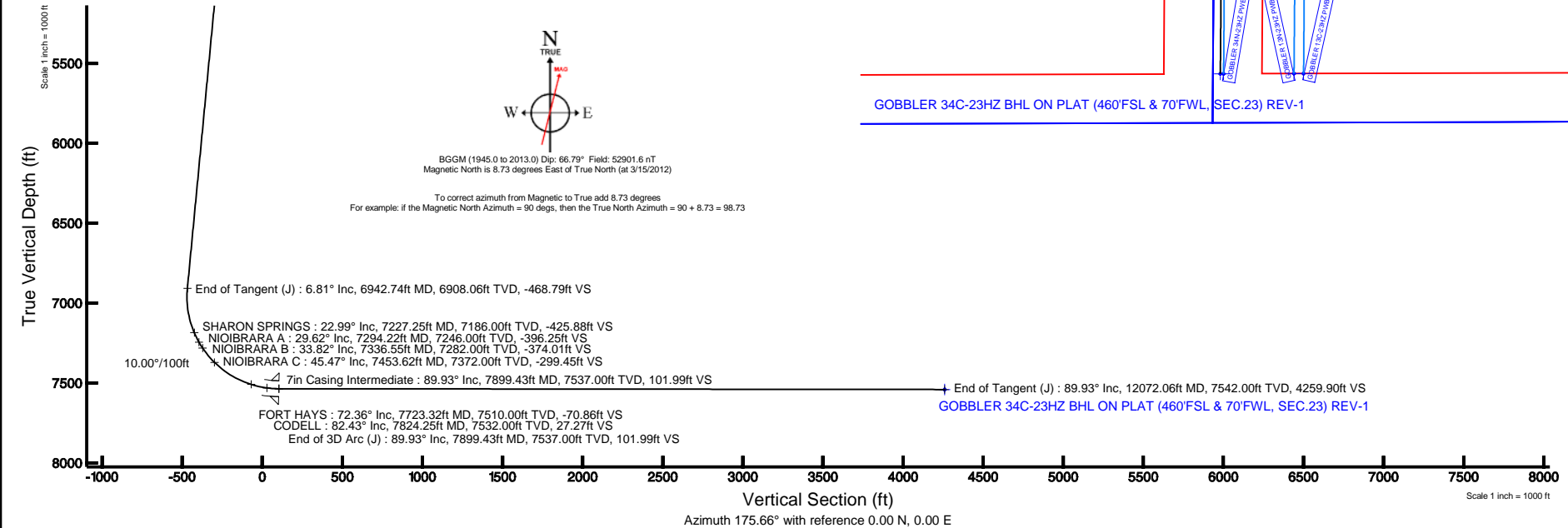
Facility Name			Grid East (US ft)	Grid North (US ft)	Latitude	Longitude
SEC 22-T2N-R66W			3203800.977	1290898.675	40°07'46.600"N	104°46'16.122"W
Slot	Local N (ft)	Local E (ft)	Grid East (US ft)	Grid North (US ft)	Latitude	Longitude
SLOT#55 GOBBLER 34C-23HZ (556FNL & 279FEL, SEC.22)	-83.78	4543.51	3208344.828	1290852.248	40°07'45.768"N	104°45'17.629"W
XTREME 6 (RKB) to Mud line (At Slot: SLOT#55 GOBBLER 34C-23HZ (556FNL & 279FEL, SEC.22))					5102ft	
Mean Sea Level to Mud line (At Slot: SLOT#55 GOBBLER 34C-23HZ (556FNL & 279FEL, SEC.22))					0ft	
XTREME 6 (RKB) to Mean Sea Level					5102ft	

## Well Profile Data

Design Comment	MD (ft)	Inc (°)	Az (°)	TVD (ft)	Local N (ft)	Local E (ft)	DLS (°/100ft)	VS (ft)
Tie On	17.00	0.000	33.000	17.00	0.00	0.00	0.00	0.00
End of Tangent	1800.00	0.000	33.000	1800.00	0.00	0.00	0.00	0.00
End of Build (J)	2140.50	6.810	33.000	2139.70	16.95	11.01	2.00	-16.07
End of Tangent (J)	6942.74	6.810	33.000	6908.06	494.52	321.15	0.00	-468.79
End of 3D Arc (J)	7899.43	89.931	180.471	7537.00	-75.19	356.80	10.00	101.99
End of Tangent (J)	12072.06	89.931	180.471	7542.00	-4247.67	322.49	0.00	4259.90

## Targets

Name	MD (ft)	TVD (ft)	Local N (ft)	Local E (ft)	Grid East (US ft)	Grid North (US ft)	Latitude	Longitude
GOBBLER 1N-23H21N-23H21C-23HZ SECTION LINES		-1.00	-4454.92	4472.39	3212854.29	1286435.25	40°07'01.740"N	104°44'20.082"W
GOBBLER 16N-27HZ SECTION 22	8.00	256.47	-379.75	3207962.95	1291105.50	40°07'48.302"N	104°45'22.518"W	
GOBBLER 1N-23H21C-23HZ HARDLINES (460' SETBACKS)	7235.00	-4454.92	4472.39	3212854.29	1286435.25	40°07'01.740"N	104°44'20.082"W	
GOBBLER HARDLINES (460' SETBACKS)	7432.00	155.62	-1820.42	3206523.24	1290992.56	40°07'47.306"N	104°45'41.086"W	
GOBBLER 34C-23HZ BHL ON PLAT (460°FSL & 70°FWL, SEC.23) REV-1	12072.06	7542.00	-4247.67	322.49	3208702.98	1286607.62	40°07'03.792"N	104°45'13.478"W





# Planned Wellpath Report

GOBBLER 34C-23HZ (PERMIT) PWP

Page 1 of 5



## REFERENCE WELLPATH IDENTIFICATION

Operator	KERR-MCGEE OIL & GAS ONSHORE LP	Slot	SLOT#55 GOBBLER 34C-23HZ (556'FNL & 279'FEL, SEC.22)
Area	COLORADO	Well	GOBBLER 34C-23HZ
Field	WELD COUNTY (KERR MCGEE)	Wellbore	GOBBLER 34C-23HZ PWB
Facility	SEC.22-T2N-R66W		

## REPORT SETUP INFORMATION

Projection System	NAD83 / Lambert Colorado SP, Northern Zone (501), US feet	Software System	WellArchitect@ 3.0.2
North Reference	True	User	Wilsjef02
Scale	0.999959	Report Generated	3/19/2012 at 09:26:07
Convergence at slot	0.48° East	Database/Source file	WellArchitectDB/GOBBLER_34C-23HZ_PWB.xml

## WELLPATH LOCATION

	Local coordinates		Grid coordinates		Geographic coordinates	
	North[ft]	East[ft]	Easting[US ft]	Northing[US ft]	Latitude	Longitude
Slot Location	-83.78	4543.51	3208344.83	1290852.25	40°07'45.768"N	104°45'17.629"W
Facility Reference Pt			3203800.98	1290898.68	40°07'46.600"N	104°46'16.122"W
Field Reference Pt			3197771.84	1268891.29	40°04'09.600"N	104°47'36.000"W

## WELLPATH DATUM

Calculation method	Minimum curvature	XTREME 6 (RKB) to Facility Vertical Datum	5102.00ft
Horizontal Reference Pt	Slot	XTREME 6 (RKB) to Mean Sea Level	5102.00ft
Vertical Reference Pt	XTREME 6 (RKB)	XTREME 6 (RKB) to Mud Line at Slot (SLOT#55 GOBBLER 34C-23HZ (556'FNL & 279'FEL, SEC.22))	5102.00ft
MD Reference Pt	XTREME 6 (RKB)	Section Origin	N 0.00, E 0.00 ft
Field Vertical Reference	Mean Sea Level	Section Azimuth	175.66°



# Planned Wellpath Report

GOBBLER 34C-23HZ (PERMIT) PWP

Page 2 of 5



## REFERENCE WELLPATH IDENTIFICATION

Operator	KERR-MCGEE OIL & GAS ONSHORE LP	Slot	SLOT#55 GOBBLER 34C-23HZ (556'FNL & 279'FEL, SEC.22)
Area	COLORADO	Well	GOBBLER 34C-23HZ
Field	WELD COUNTY (KERR MCGEE)	Wellbore	GOBBLER 34C-23HZ PWB
Facility	SEC.22-T2N-R66W		

## WELLPATH DATA (135 stations) † = interpolated/extrapolated station

MD [ft]	Inclination [°]	Azimuth [°]	TVD [ft]	Vert Sect [ft]	North [ft]	East [ft]	Latitude	Longitude	DLS [°/100ft]	Comments
0.00†	0.000	33.000	0.00	0.00	0.00	0.00	40°07'45.768"N	104°45'17.629"W	0.00	
17.00	0.000	33.000	17.00	0.00	0.00	0.00	40°07'45.768"N	104°45'17.629"W	0.00	Tie On
117.00†	0.000	33.000	117.00	0.00	0.00	0.00	40°07'45.768"N	104°45'17.629"W	0.00	
217.00†	0.000	33.000	217.00	0.00	0.00	0.00	40°07'45.768"N	104°45'17.629"W	0.00	
317.00†	0.000	33.000	317.00	0.00	0.00	0.00	40°07'45.768"N	104°45'17.629"W	0.00	
417.00†	0.000	33.000	417.00	0.00	0.00	0.00	40°07'45.768"N	104°45'17.629"W	0.00	
517.00†	0.000	33.000	517.00	0.00	0.00	0.00	40°07'45.768"N	104°45'17.629"W	0.00	
617.00†	0.000	33.000	617.00	0.00	0.00	0.00	40°07'45.768"N	104°45'17.629"W	0.00	
717.00†	0.000	33.000	717.00	0.00	0.00	0.00	40°07'45.768"N	104°45'17.629"W	0.00	
817.00†	0.000	33.000	817.00	0.00	0.00	0.00	40°07'45.768"N	104°45'17.629"W	0.00	
917.00†	0.000	33.000	917.00	0.00	0.00	0.00	40°07'45.768"N	104°45'17.629"W	0.00	
1017.00†	0.000	33.000	1017.00	0.00	0.00	0.00	40°07'45.768"N	104°45'17.629"W	0.00	
1117.00†	0.000	33.000	1117.00	0.00	0.00	0.00	40°07'45.768"N	104°45'17.629"W	0.00	
1217.00†	0.000	33.000	1217.00	0.00	0.00	0.00	40°07'45.768"N	104°45'17.629"W	0.00	
1317.00†	0.000	33.000	1317.00	0.00	0.00	0.00	40°07'45.768"N	104°45'17.629"W	0.00	
1417.00†	0.000	33.000	1417.00	0.00	0.00	0.00	40°07'45.768"N	104°45'17.629"W	0.00	
1517.00†	0.000	33.000	1517.00	0.00	0.00	0.00	40°07'45.768"N	104°45'17.629"W	0.00	
1617.00†	0.000	33.000	1617.00	0.00	0.00	0.00	40°07'45.768"N	104°45'17.629"W	0.00	
1717.00†	0.000	33.000	1717.00	0.00	0.00	0.00	40°07'45.768"N	104°45'17.629"W	0.00	
1800.00	0.000	33.000	1800.00	0.00	0.00	0.00	40°07'45.768"N	104°45'17.629"W	0.00	End of Tangent
1817.00†	0.340	33.000	1817.00	-0.04	0.04	0.03	40°07'45.768"N	104°45'17.629"W	2.00	
1917.00†	2.340	33.000	1916.97	-1.90	2.00	1.30	40°07'45.788"N	104°45'17.612"W	2.00	
2017.00†	4.340	33.000	2016.79	-6.53	6.89	4.47	40°07'45.836"N	104°45'17.571"W	2.00	
2117.00†	6.340	33.000	2116.35	-13.93	14.69	9.54	40°07'45.913"N	104°45'17.506"W	2.00	
2140.50	6.810	33.000	2139.70	-16.07	16.95	11.01	40°07'45.936"N	104°45'17.487"W	2.00	End of Build (J)
2217.00†	6.810	33.000	2215.66	-23.28	24.56	15.95	40°07'46.011"N	104°45'17.424"W	0.00	
2317.00†	6.810	33.000	2314.95	-32.71	34.50	22.41	40°07'46.109"N	104°45'17.341"W	0.00	
2417.00†	6.810	33.000	2414.25	-42.14	44.45	28.86	40°07'46.207"N	104°45'17.257"W	0.00	
2517.00†	6.810	33.000	2513.54	-51.56	54.39	35.32	40°07'46.306"N	104°45'17.174"W	0.00	
2617.00†	6.810	33.000	2612.84	-60.99	64.34	41.78	40°07'46.404"N	104°45'17.091"W	0.00	
2717.00†	6.810	33.000	2712.13	-70.42	74.28	48.24	40°07'46.502"N	104°45'17.008"W	0.00	
2817.00†	6.810	33.000	2811.43	-79.84	84.23	54.70	40°07'46.600"N	104°45'16.925"W	0.00	
2917.00†	6.810	33.000	2910.72	-89.27	94.17	61.16	40°07'46.699"N	104°45'16.842"W	0.00	
3017.00†	6.810	33.000	3010.02	-98.70	104.12	67.61	40°07'46.797"N	104°45'16.759"W	0.00	
3117.00†	6.810	33.000	3109.31	-108.13	114.06	74.07	40°07'46.895"N	104°45'16.675"W	0.00	
3217.00†	6.810	33.000	3208.60	-117.55	124.01	80.53	40°07'46.993"N	104°45'16.592"W	0.00	
3317.00†	6.810	33.000	3307.90	-126.98	133.95	86.99	40°07'47.092"N	104°45'16.509"W	0.00	
3417.00†	6.810	33.000	3407.19	-136.41	143.90	93.45	40°07'47.190"N	104°45'16.426"W	0.00	
3517.00†	6.810	33.000	3506.49	-145.84	153.84	99.90	40°07'47.288"N	104°45'16.343"W	0.00	
3617.00†	6.810	33.000	3605.78	-155.26	163.78	106.36	40°07'47.387"N	104°45'16.260"W	0.00	
3717.00†	6.810	33.000	3705.08	-164.69	173.73	112.82	40°07'47.485"N	104°45'16.177"W	0.00	
3817.00†	6.810	33.000	3804.37	-174.12	183.67	119.28	40°07'47.583"N	104°45'16.093"W	0.00	
3917.00†	6.810	33.000	3903.67	-183.54	193.62	125.74	40°07'47.681"N	104°45'16.010"W	0.00	
4017.00†	6.810	33.000	4002.96	-192.97	203.56	132.20	40°07'47.780"N	104°45'15.927"W	0.00	
4117.00†	6.810	33.000	4102.25	-202.40	213.51	138.65	40°07'47.878"N	104°45'15.844"W	0.00	
4217.00†	6.810	33.000	4201.55	-211.83	223.45	145.11	40°07'47.976"N	104°45'15.761"W	0.00	
4286.94†	6.810	33.000	4271.00	-218.42	230.41	149.63	40°07'48.045"N	104°45'15.703"W	0.00	PARKMAN
4317.00†	6.810	33.000	4300.84	-221.25	233.40	151.57	40°07'48.074"N	104°45'15.678"W	0.00	
4417.00†	6.810	33.000	4400.14	-230.68	243.34	158.03	40°07'48.173"N	104°45'15.595"W	0.00	
4517.00†	6.810	33.000	4499.43	-240.11	253.29	164.49	40°07'48.271"N	104°45'15.511"W	0.00	
4617.00†	6.810	33.000	4598.73	-249.54	263.23	170.94	40°07'48.369"N	104°45'15.428"W	0.00	
4665.62†	6.810	33.000	4647.00	-254.12	268.07	174.08	40°07'48.417"N	104°45'15.388"W	0.00	SUSSEX
4717.00†	6.810	33.000	4698.02	-258.96	273.18	177.40	40°07'48.468"N	104°45'15.345"W	0.00	
4817.00†	6.810	33.000	4797.32	-268.39	283.12	183.86	40°07'48.566"N	104°45'15.262"W	0.00	
4917.00†	6.810	33.000	4896.61	-277.82	293.07	190.32	40°07'48.664"N	104°45'15.179"W	0.00	
5017.00†	6.810	33.000	4995.90	-287.24	303.01	196.78	40°07'48.762"N	104°45'15.096"W	0.00	
5117.00†	6.810	33.000	5095.20	-296.67	312.96	203.24	40°07'48.861"N	104°45'15.013"W	0.00	
5217.00†	6.810	33.000	5194.49	-306.10	322.90	209.69	40°07'48.959"N	104°45'14.929"W	0.00	
5317.00†	6.810	33.000	5293.79	-315.53	332.85	216.15	40°07'49.057"N	104°45'14.846"W	0.00	
5417.00†	6.810	33.000	5393.08	-324.95	342.79	222.61	40°07'49.155"N	104°45'14.763"W	0.00	



# Planned Wellpath Report

GOBBLER 34C-23HZ (PERMIT) PWP  
Page 3 of 5



## REFERENCE WELLPATH IDENTIFICATION

Operator	KERR-MCGEE OIL & GAS ONSHORE LP	Slot	SLOT#55 GOBBLER 34C-23HZ (556'FNL & 279'FEL, SEC.22)
Area	COLORADO	Well	GOBBLER 34C-23HZ
Field	WELD COUNTY (KERR MCGEE)	Wellbore	GOBBLER 34C-23HZ PWB
Facility	SEC.22-T2N-R66W		

## WELLPATH DATA (135 stations) † = interpolated/extrapolated station

MD [ft]	Inclination [°]	Azimuth [°]	TVD [ft]	Vert Sect [ft]	North [ft]	East [ft]	Latitude	Longitude	DLS [°/100ft]	Comments
5517.00†	6.810	33.000	5492.38	-334.38	352.73	229.07	40°07'49.254"N	104°45'14.680"W	0.00	
5617.00†	6.810	33.000	5591.67	-343.81	362.68	235.53	40°07'49.352"N	104°45'14.597"W	0.00	
5717.00†	6.810	33.000	5690.97	-353.24	372.62	241.98	40°07'49.450"N	104°45'14.514"W	0.00	
5817.00†	6.810	33.000	5790.26	-362.66	382.57	248.44	40°07'49.549"N	104°45'14.431"W	0.00	
5917.00†	6.810	33.000	5889.56	-372.09	392.51	254.90	40°07'49.647"N	104°45'14.347"W	0.00	
6017.00†	6.810	33.000	5988.85	-381.52	402.46	261.36	40°07'49.745"N	104°45'14.264"W	0.00	
6117.00†	6.810	33.000	6088.14	-390.94	412.40	267.82	40°07'49.843"N	104°45'14.181"W	0.00	
6217.00†	6.810	33.000	6187.44	-400.37	422.35	274.28	40°07'49.942"N	104°45'14.098"W	0.00	
6317.00†	6.810	33.000	6286.73	-409.80	432.29	280.73	40°07'50.040"N	104°45'14.015"W	0.00	
6417.00†	6.810	33.000	6386.03	-419.23	442.24	287.19	40°07'50.138"N	104°45'13.932"W	0.00	
6517.00†	6.810	33.000	6485.32	-428.65	452.18	293.65	40°07'50.236"N	104°45'13.848"W	0.00	
6617.00†	6.810	33.000	6584.62	-438.08	462.13	300.11	40°07'50.335"N	104°45'13.765"W	0.00	
6717.00†	6.810	33.000	6683.91	-447.51	472.07	306.57	40°07'50.433"N	104°45'13.682"W	0.00	
6817.00†	6.810	33.000	6783.21	-456.94	482.02	313.02	40°07'50.531"N	104°45'13.599"W	0.00	
6917.00†	6.810	33.000	6882.50	-466.36	491.96	319.48	40°07'50.630"N	104°45'13.516"W	0.00	
6942.74	6.810	33.000	6908.06	-468.79	494.52	321.15	40°07'50.655"N	104°45'13.495"W	0.00	End of Tangent (J)
7017.00†	4.043	115.174	6982.07	-471.00	497.10	325.92	40°07'50.680"N	104°45'13.433"W	10.00	
7117.00†	12.244	163.266	7081.06	-458.88	485.42	332.18	40°07'50.565"N	104°45'13.352"W	10.00	
7217.00†	21.982	171.323	7176.53	-429.79	456.69	338.07	40°07'50.281"N	104°45'13.277"W	10.00	
7227.25†	22.993	171.772	7186.00	-425.88	452.81	338.65	40°07'50.243"N	104°45'13.269"W	10.00	SHARON SPRINGS
7294.22†	29.618	173.991	7246.00	-396.25	423.38	342.25	40°07'49.952"N	104°45'13.223"W	10.00	NIOBRARA A
7317.00†	31.878	174.550	7265.58	-384.61	411.79	343.41	40°07'49.837"N	104°45'13.208"W	10.00	
7336.55†	33.819	174.976	7282.00	-374.01	401.23	344.38	40°07'49.733"N	104°45'13.195"W	10.00	NIOBRARA B
7417.00†	41.820	176.360	7345.50	-324.72	352.08	348.05	40°07'49.247"N	104°45'13.148"W	10.00	
7453.62†	45.467	176.854	7372.00	-299.45	326.85	349.54	40°07'48.998"N	104°45'13.129"W	10.00	NIOBRARA C
7517.00†	51.781	177.577	7413.87	-251.94	279.37	351.84	40°07'48.529"N	104°45'13.099"W	10.00	
7617.00†	61.751	178.499	7468.61	-168.47	195.88	354.66	40°07'47.704"N	104°45'13.063"W	10.00	
7717.00†	71.727	179.261	7508.05	-76.86	104.15	356.43	40°07'46.797"N	104°45'13.040"W	10.00	
7723.32†	72.358	179.306	7510.00	-70.86	98.13	356.51	40°07'46.738"N	104°45'13.039"W	10.00	FORT HAYS
7817.00†	81.705	179.939	7531.00	20.11	6.95	357.10	40°07'45.837"N	104°45'13.032"W	10.00	
7824.25†	82.429	179.987	7532.00	27.27	-0.24	357.10	40°07'45.766"N	104°45'13.032"W	10.00	CODELL
7899.43	89.931	180.471	7537.00	101.99	-75.19	356.80	40°07'45.025"N	104°45'13.036"W	10.00	End of 3D Arc (J)
7917.00†	89.931	180.471	7537.03	119.50	-92.76	356.66	40°07'44.851"N	104°45'13.037"W	0.00	
8017.00†	89.931	180.471	7537.15	219.14	-192.76	355.83	40°07'43.863"N	104°45'13.048"W	0.00	
8117.00†	89.931	180.471	7537.27	318.79	-292.75	355.01	40°07'42.875"N	104°45'13.059"W	0.00	
8217.00†	89.931	180.471	7537.38	418.44	-392.75	354.19	40°07'41.887"N	104°45'13.069"W	0.00	
8317.00†	89.931	180.471	7537.50	518.08	-492.75	353.37	40°07'40.899"N	104°45'13.080"W	0.00	
8417.00†	89.931	180.471	7537.62	617.73	-592.74	352.54	40°07'39.910"N	104°45'13.090"W	0.00	
8517.00†	89.931	180.471	7537.74	717.38	-692.74	351.72	40°07'38.922"N	104°45'13.101"W	0.00	
8617.00†	89.931	180.471	7537.86	817.03	-792.74	350.90	40°07'37.934"N	104°45'13.112"W	0.00	
8717.00†	89.931	180.471	7537.98	916.67	-892.73	350.08	40°07'36.946"N	104°45'13.122"W	0.00	
8817.00†	89.931	180.471	7538.10	1016.32	-992.73	349.26	40°07'35.958"N	104°45'13.133"W	0.00	
8917.00†	89.931	180.471	7538.22	1115.97	-1092.73	348.43	40°07'34.970"N	104°45'13.143"W	0.00	
9017.00†	89.931	180.471	7538.34	1215.62	-1192.72	347.61	40°07'33.981"N	104°45'13.154"W	0.00	
9117.00†	89.931	180.471	7538.46	1315.26	-1292.72	346.79	40°07'32.993"N	104°45'13.165"W	0.00	
9217.00†	89.931	180.471	7538.58	1414.91	-1392.72	345.97	40°07'32.005"N	104°45'13.175"W	0.00	
9317.00†	89.931	180.471	7538.70	1514.56	-1492.71	345.14	40°07'31.017"N	104°45'13.186"W	0.00	
9417.00†	89.931	180.471	7538.82	1614.21	-1592.71	344.32	40°07'30.029"N	104°45'13.196"W	0.00	
9517.00†	89.931	180.471	7538.94	1713.85	-1692.71	343.50	40°07'29.040"N	104°45'13.207"W	0.00	
9617.00†	89.931	180.471	7539.06	1813.50	-1792.70	342.68	40°07'28.052"N	104°45'13.218"W	0.00	
9717.00†	89.931	180.471	7539.18	1913.15	-1892.70	341.85	40°07'27.064"N	104°45'13.228"W	0.00	
9817.00†	89.931	180.471	7539.30	2012.79	-1992.70	341.03	40°07'26.076"N	104°45'13.239"W	0.00	
9917.00†	89.931	180.471	7539.42	2112.44	-2092.69	340.21	40°07'25.088"N	104°45'13.250"W	0.00	
10017.00†	89.931	180.471	7539.54	2212.09	-2192.69	339.39	40°07'24.100"N	104°45'13.260"W	0.00	
10117.00†	89.931	180.471	7539.66	2311.74	-2292.69	338.57	40°07'23.111"N	104°45'13.271"W	0.00	
10217.00†	89.931	180.471	7539.78	2411.38	-2392.68	337.74	40°07'22.123"N	104°45'13.281"W	0.00	
10317.00†	89.931	180.471	7539.90	2511.03	-2492.68	336.92	40°07'21.135"N	104°45'13.292"W	0.00	
10417.00†	89.931	180.471	7540.02	2610.68	-2592.67	336.10	40°07'20.147"N	104°45'13.303"W	0.00	
10517.00†	89.931	180.471	7540.14	2710.33	-2692.67	335.28	40°07'19.159"N	104°45'13.313"W	0.00	
10617.00†	89.931	180.471	7540.26	2809.97	-2792.67	334.45	40°07'18.171"N	104°45'13.324"W	0.00	



# Planned Wellpath Report

GOBBLER 34C-23HZ (PERMIT) PWP

Page 4 of 5



## REFERENCE WELLPATH IDENTIFICATION

Operator	KERR-MCGEE OIL & GAS ONSHORE LP	Slot	SLOT#55 GOBBLER 34C-23HZ (556'FNL & 279'FEL, SEC.22)
Area	COLORADO	Well	GOBBLER 34C-23HZ
Field	WELD COUNTY (KERR MCGEE)	Wellbore	GOBBLER 34C-23HZ PWB
Facility	SEC.22-T2N-R66W		

## WELLPATH DATA (135 stations) † = interpolated/extrapolated station

MD [ft]	Inclination [°]	Azimuth [°]	TVD [ft]	Vert Sect [ft]	North [ft]	East [ft]	Latitude	Longitude	DLS [°/100ft]	Comments
10717.00†	89.931	180.471	7540.38	2909.62	-2892.66	333.63	40°07'17.182"N	104°45'13.334"W	0.00	
10817.00†	89.931	180.471	7540.50	3009.27	-2992.66	332.81	40°07'16.194"N	104°45'13.345"W	0.00	
10917.00†	89.931	180.471	7540.62	3108.92	-3092.66	331.99	40°07'15.206"N	104°45'13.356"W	0.00	
11017.00†	89.931	180.471	7540.74	3208.56	-3192.65	331.16	40°07'14.218"N	104°45'13.366"W	0.00	
11117.00†	89.931	180.471	7540.86	3308.21	-3292.65	330.34	40°07'13.230"N	104°45'13.377"W	0.00	
11217.00†	89.931	180.471	7540.98	3407.86	-3392.65	329.52	40°07'12.241"N	104°45'13.387"W	0.00	
11317.00†	89.931	180.471	7541.10	3507.50	-3492.64	328.70	40°07'11.253"N	104°45'13.398"W	0.00	
11417.00†	89.931	180.471	7541.22	3607.15	-3592.64	327.88	40°07'10.265"N	104°45'13.409"W	0.00	
11517.00†	89.931	180.471	7541.34	3706.80	-3692.64	327.05	40°07'09.277"N	104°45'13.419"W	0.00	
11617.00†	89.931	180.471	7541.46	3806.45	-3792.63	326.23	40°07'08.289"N	104°45'13.430"W	0.00	
11717.00†	89.931	180.471	7541.57	3906.09	-3892.63	325.41	40°07'07.301"N	104°45'13.440"W	0.00	
11817.00†	89.931	180.471	7541.69	4005.74	-3992.63	324.59	40°07'06.312"N	104°45'13.451"W	0.00	
11917.00†	89.931	180.471	7541.81	4105.39	-4092.62	323.76	40°07'05.324"N	104°45'13.462"W	0.00	
12017.00†	89.931	180.471	7541.93	4205.04	-4192.62	322.94	40°07'04.336"N	104°45'13.472"W	0.00	
12072.06	89.931	180.471	7542.00 <sup>1</sup>	4259.90	-4247.67	322.49	40°07'03.792"N	104°45'13.478"W	0.00	End of Tangent (J)

## HOLE & CASING SECTIONS - Ref Wellbore: GOBBLER 34C-23HZ PWB Ref Wellpath: GOBBLER 34C-23HZ (PERMIT) PWP

String/Diameter	Start MD [ft]	End MD [ft]	Interval [ft]	Start TVD [ft]	End TVD [ft]	Start N/S [ft]	Start E/W [ft]	End N/S [ft]	End E/W [ft]
13.5in Open Hole	17.00	1000.00	983.00	17.00	1000.00	0.00	0.00	0.00	0.00
9.625in Casing Surface	17.00	1000.00	983.00	17.00	1000.00	0.00	0.00	0.00	0.00
8.75in Open Hole	1000.00	7899.43	6899.43	1000.00	7537.00	0.00	0.00	-75.19	356.80
7in Casing Intermediate	17.00	7899.43	7882.43	17.00	7537.00	0.00	0.00	-75.19	356.80
6.125in Open Hole	7899.43	12072.06	4172.63	7537.00	7542.00	-75.19	356.80	-4247.67	322.49
4.5in Casing Production	17.00	12072.06	12055.06	17.00	7542.00	0.00	0.00	-4247.67	322.49

## TARGETS

Name	MD [ft]	TVD [ft]	North [ft]	East [ft]	Grid East [US ft]	Grid North [US ft]	Latitude	Longitude	Shape
GOBBLER 1N-23HZ1N-23HZ/1C-23HZ SECTION LINES		-1.00	-4454.92	4472.39	3212854.29	1286435.25	40°07'01.740"N	104°44'20.062"W	polygon
GOBBLER 16N-27HZ SECTION 22		8.00	256.47	-379.75	3207962.95	1291105.50	40°07'48.302"N	104°45'22.518"W	polygon
GOBBLER 1N-23HZ/1C-23HZ HARDLINES (460' SETBACKS)		7235.00	-4454.92	4472.39	3212854.29	1286435.25	40°07'01.740"N	104°44'20.062"W	polygon
GOBBLER HARDLINES (460' SETBACKS)		7432.00	155.62	-1820.42	3206523.24	1290992.56	40°07'47.305"N	104°45'41.065"W	polygon
1) GOBBLER 34C-23HZ BHL ON PLAT (460'FSL & 70'FWL, SEC.23) REV-1	12072.06	7542.00	-4247.67	322.49	3208702.98	1286607.62	40°07'03.792"N	104°45'13.478"W	point

## SURVEY PROGRAM - Ref Wellbore: GOBBLER 34C-23HZ PWB Ref Wellpath: GOBBLER 34C-23HZ (PERMIT) PWP

Start MD [ft]	End MD [ft]	Positional Uncertainty Model	Log Name/Comment	Wellbore
17.00	12072.06	NaviTrak (Standard)		GOBBLER 34C-23HZ PWB



# Planned Wellpath Report

GOBBLER 34C-23HZ (PERMIT) PWP

Page 5 of 5



## REFERENCE WELLPATH IDENTIFICATION

Operator	KERR-MCGEE OIL & GAS ONSHORE LP	Slot	SLOT#55 GOBBLER 34C-23HZ (556'FNL & 279'FEL, SEC.22)
Area	COLORADO	Well	GOBBLER 34C-23HZ
Field	WELD COUNTY (KERR MCGEE)	Wellbore	GOBBLER 34C-23HZ PWB
Facility	SEC.22-T2N-R66W		

## WELLPATH COMMENTS

MD [ft]	Inclination [°]	Azimuth [°]	TVD [ft]	Comment
4286.94	6.810	33.000	4271.00	PARKMAN
4665.62	6.810	33.000	4647.00	SUSSEX
7227.25	22.993	171.772	7186.00	SHARON SPRINGS
7294.22	29.618	173.991	7246.00	NIOIBRARA A
7336.55	33.819	174.976	7282.00	NIOIBRARA B
7453.62	45.467	176.854	7372.00	NIOIBRARA C
7723.32	72.358	179.306	7510.00	FORT HAYS
7824.25	82.429	179.987	7532.00	CODELL