

The Road to Excellence Starts with Safety

Sold To #: 300721	Ship To #: 2929115	Quote #:	Sales Order #: 9538858
Customer: WPX ENERGY ROCKY MOUNTAIN LLC-EBUS	Customer Rep: Oaks, Rick		
Well Name: RWF	Well #: 312-35	API/UWI #: 05-045-20450	
Field: RULISON	City (SAP): RIFLE	County/Parish: Garfield	State: Colorado
Lat: N 39.483 deg. OR N 39 deg. 29 min. 0.528 secs.	Long: W 107.863 deg. OR W -108 deg. 8 min. 13.686 secs.		
Contractor: NABORS 576	Rig/Platform Name/Num: NABORS 576		
Job Purpose: Cement Surface Casing			
Well Type: Development Well	Job Type: Cement Surface Casing		
Sales Person: MAYO, MARK	Srv Supervisor: ANGLESTEIN, TROY	MBU ID Emp #: 436099	

Job Personnel

HES Emp Name	Exp Hrs	Emp #	HES Emp Name	Exp Hrs	Emp #	HES Emp Name	Exp Hrs	Emp #
ANGLESTEIN, TROY Edward WM	9	436099	BORSZICH, STEPHEN A	9	412388	JENSEN, JESSE Robert	9	478774
ROSE, BENJAMIN Keith	9	487022						

Equipment

HES Unit #	Distance-1 way	HES Unit #	Distance-1 way	HES Unit #	Distance-1 way	HES Unit #	Distance-1 way
10248065	60 mile	10784080	60 mile	10951249	60 mile	11808833	60 mile

Job Hours

Date	On Location Hours	Operating Hours	Date	On Location Hours	Operating Hours	Date	On Location Hours	Operating Hours
6/10/2012	9	1						

TOTAL Total is the sum of each column separately

Job

Formation Name	Top	Bottom	Called Out	Date	Time	Time Zone
Formation Depth (MD)			On Location	10 - Jun - 2012	11:00	MST
Form Type		BHST	Job Started	10 - Jun - 2012	14:50	MST
Job depth MD	1125. ft	Job Depth TVD	Job Completed	10 - Jun - 2012	21:43	MST
Water Depth		Wk Ht Above Floor	Departed Loc	10 - Jun - 2012	22:42	MST
Perforation Depth (MD)	From	To		10 - Jun - 2012	23:30	MST

Well Data

Description	New / Used	Max pressure psig	Size in	ID in	Weight lbm/ft	Thread	Grade	Top MD ft	Bottom MD ft	Top TVD ft	Bottom TVD ft
OPEN HOLE SECTION				13.5				.	1125.		
SURFACE CASING	Unknown		9.625	9.001	32.3			.	1097.4		

Sales/Rental/3rd Party (HES)

Description	Qty	Qty uom	Depth	Supplier
PLUG,CMTG,TOP,9 5/8,HWE,8.16 MIN/9.06 MA	1	EA		

Tools and Accessories

Type	Size	Qty	Make	Depth	Type	Size	Qty	Make	Depth	Type	Size	Qty	Make
Guide Shoe					Packer					Top Plug	9.625	1	HES
Float Shoe					Bridge Plug					Bottom Plug			
Float Collar					Retainer					SSR plug set			
Insert Float										Plug Container	9.625	1	HES
Stage Tool										Centralizers			

Miscellaneous Materials

Gelling Agt	Conc	Surfactant	Conc	Acid Type	Qty	Conc	%
Treatment Fld	Conc	Inhibitor	Conc	Sand Type	Size	Qty	

Fluid Data

Stage/Plug #: 1

Fluid #	Stage Type	Fluid Name	Qty	Qty uom	Mixing Density lbm/gal	Yield ft ³ /sk	Mix Fluid Gal/sk	Rate bbl/min	Total Mix Fluid Gal/sk
1	Fresh Water		20.00	bbl	8.33	.0	.0	4	
2	VersaCem Lead	VERSACEM (TM) SYSTEM (452010)	180.0	sacks	12.3	2.38	13.75	8	13.75
		13.75 Gal FRESH WATER							
3	VersaCem Tail	VERSACEM (TM) SYSTEM (452010)	160.0	sacks	12.8	2.11	11.75	8	11.75
		11.75 Gal FRESH WATER							
4	Displacement Fluid		82.9	bbl	8.34	.0	.0	10	
Calculated Values		Pressures		Volumes					
Displacement	82.9	Shut In: Instant		Lost Returns	0	Cement Slurry	136	Pad	
Top Of Cement	SURFACE	5 Min		Cement Returns	35	Actual Displacement	82.9	Treatment	
Frac Gradient		15 Min		Spacers	20	Load and Breakdown		Total Job	240
Rates									
Circulating		Mixing	8	Displacement	10	Avg. Job	8		
Cement Left In Pipe	Amount	44.5 ft	Reason	Shoe Joint					
Frac Ring # 1 @	ID	Frac ring # 2 @	ID	Frac Ring # 3 @	ID	Frac Ring # 4 @	ID		
The Information Stated Herein Is Correct				Customer Representative Signature					

The Road to Excellence Starts with Safety

Sold To #: 300721	Ship To #: 2929115	Quote #:	Sales Order #: 9538858
Customer: WPX ENERGY ROCKY MOUNTAIN LLC-EBUS	Customer Rep: Oaks, Rick		
Well Name: RWF	Well #: 312-35	API/UWI #: 05-045-20450	
Field: RULISON	City (SAP): RIFLE	County/Parish: Garfield	State: Colorado
Legal Description:			
Lat: N 39.483 deg. OR N 39 deg. 29 min. 0.528 secs.		Long: W 107.863 deg. OR W -108 deg. 8 min. 13.686 secs.	
Contractor: NABORS 576	Rig/Platform Name/Num: NABORS 576		
Job Purpose: Cement Surface Casing			Ticket Amount:
Well Type: Development Well	Job Type: Cement Surface Casing		
Sales Person: MAYO, MARK	Srv Supervisor: ANGLESTEIN, TROY	MBU ID Emp #: 436099	

Activity Description	Date/Time	Cht #	Rate bbl/min	Volume bbl		Pressure psig		Comments
				Stage	Total	Tubing	Casing	
Call Out	06/10/2012 11:00							
Pre-Convoy Safety Meeting	06/10/2012 13:00							ALL HES EMPLOYEES
Arrive At Loc	06/10/2012 14:50							RIG STILL TRIPPING PIPE, RAN WIPER TRIP, RAN CASING, CIRCULATED FOR 1 HOUR
Assessment Of Location Safety Meeting	06/10/2012 15:00							ALL HES EMPLOYEES
Rig-Up Equipment	06/10/2012 15:30							1 HT 400 PUMP TRUCK, 1 660 BULK TRUCK, 1 BODY LOAD, 1 9.625 QUICK LATCH PLUG CONTAINER, 1 F 450 P/U
Pre-Job Safety Meeting	06/10/2012 16:29							ALL HES EMPLOYEES, RIG CREW, CO REP.
Start Job	06/10/2012 21:43							9.625 CASING SET AT 1097.4', FC 1052.86', TD: 1125', OPEN HOLE 13.5", MUD WT 9.7 PPG, 800 BBLS OF H2O ON LOCATION, WATER SAMPLE SUBMITTED.
Pump Water	06/10/2012 21:44		2	2			34.0	FILL LINES
Pressure Test	06/10/2012 21:46		0.5	0.5		4195.0		NO LEAKS
Pump Spacer 1	06/10/2012 21:51		4	20			87.0	FRESH WATER
Activity Description	Date/Time	Cht	Rate bbl/min	Volume bbl		Pressure psig		Comments

Sold To #: 300721

Ship To #: 2929115

Quote #:

Sales Order #:

9538858

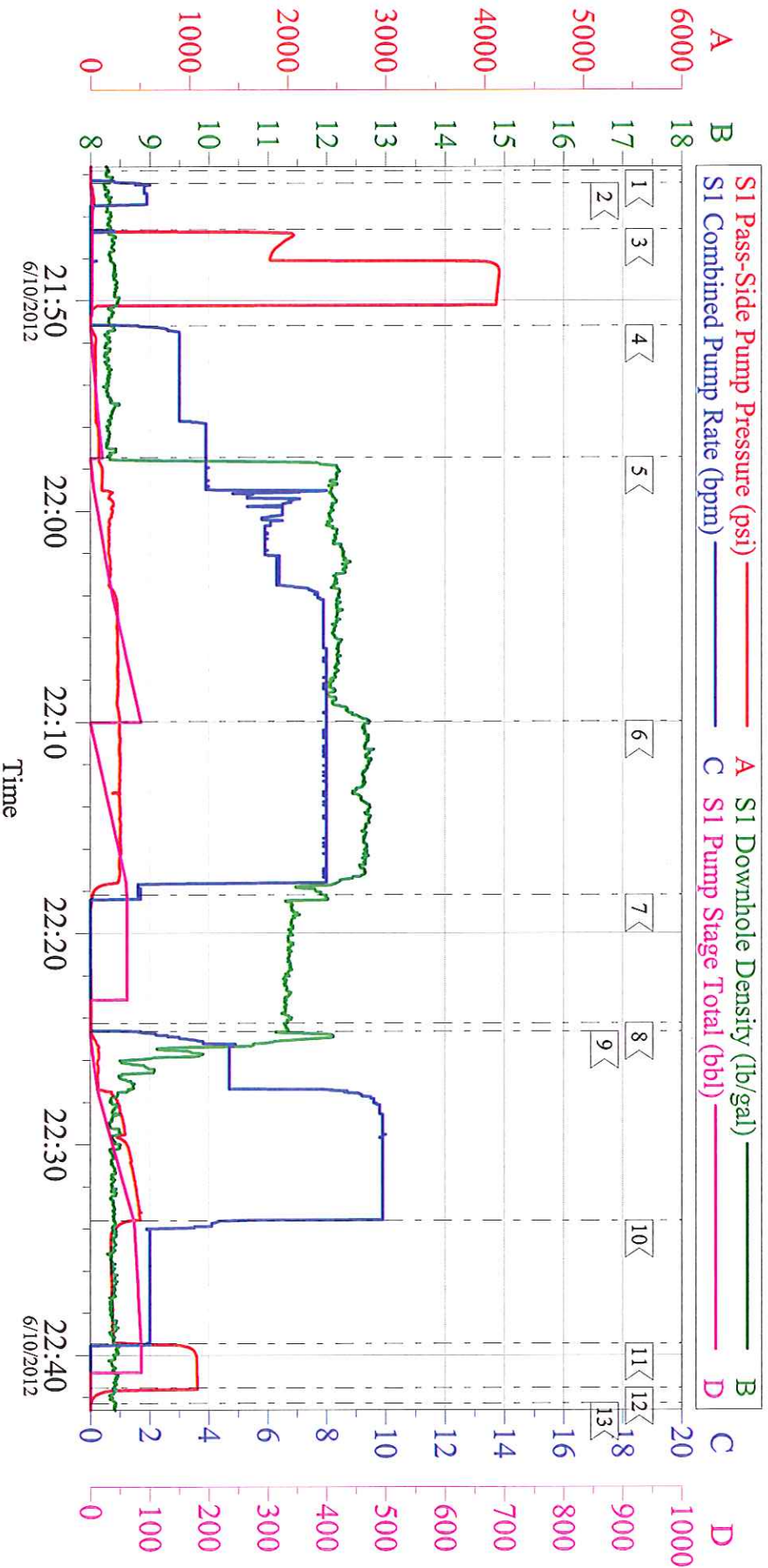
SUMMIT Version: 7.3.0030

Saturday, June 16, 2012 01:10:00

		#		Stage	Total	Tubing	Casing	
Pump Lead Cement	06/10/2012 21:57		8	76.3			290.0	170 SKS VERSACEM CMT TO BE MIXED AT 12.3 PPG, 2.38 YIELD, 13.75 GAL/SK, CMT TO BE WEIGHED VIA PRESSURE BALANCED MUD SCALES WET AND DRY SAMPLES SUBMITTED
Pump Tail Cement	06/10/2012 22:09		8	60.1			312.0	160 SKS VERSACEM CMT TO BE MIXED AT 12.8 PPG, 2.11 YIELD, 11.75 GAL/SK, CMT TO BE WEIGHED VIA PRESSURE BALANCED MUD SCALES. WET AND DRY SAMPLES SUBMITTED.
Shutdown	06/10/2012 22:18							FOR NO MORE THEN 5 MINUTES,
Drop Plug	06/10/2012 22:24							PLUG LAUNCHED
Pump Displacement	06/10/2012 22:24		10	82.9			496.0	FRESHWATER
Cement Returns to Surface	06/10/2012 22:28		10	47.9			399.0	35 BBLS OF CEMENT TO SURFACE.
Slow Rate	06/10/2012 22:33		2	72			219.0	10 BBLS PRIOR TO CALCULATED DISPLACEMENT
Bump Plug	06/10/2012 22:39		2	82.9			233.0	PLUG LANDED AT 1091 HELD FOR TWO MINUTES
Check Floats	06/10/2012 22:41							FLOATS HOLDING, NO ANNULAR FLOW NOTED
End Job	06/10/2012 22:42							THANK YOU FOR USING HES FROM TROY ANGLESTEIN AND CREW.
Post-Job Safety Meeting (Pre Rig-Down)	06/10/2012 22:50							ALL HES EMPLOYEES
Rig-Down Equipment	06/10/2012 23:15							SAFELY
Pre-Convoy Safety Meeting	06/10/2012 23:20							ALL HES EMPLOYEES
Crew Leave Location	06/10/2012 23:30							SITE WAS AS CLEAN AS WHEN WE ARRIVED

WPX ENERGY - RWF 312-35

SURFACE



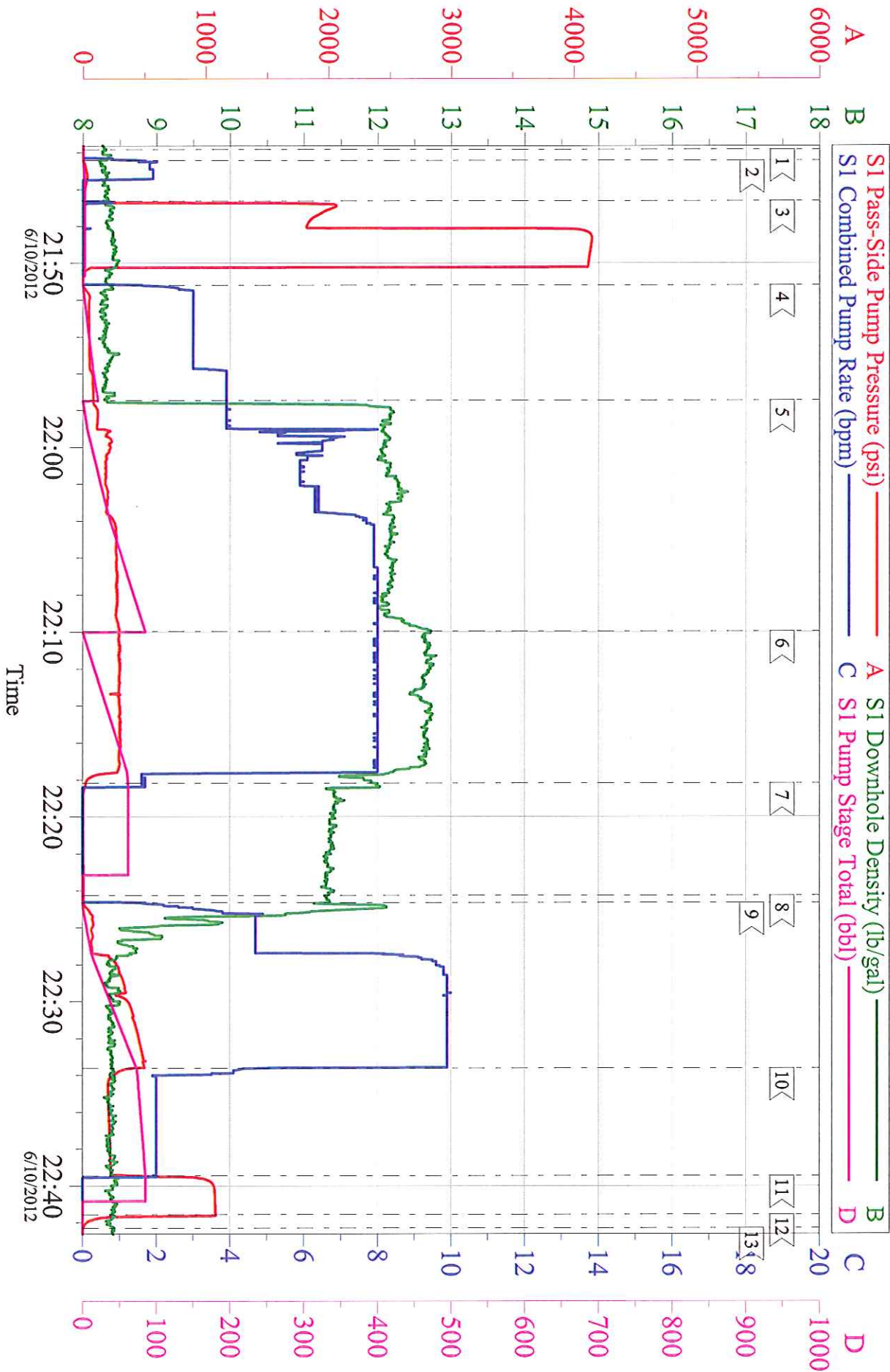
Customer: WPX ENERGY
Well Description: RWF312-35
Company Rep: RICK OAKS

Job Date: 10-Jun-2012
Job Type: SURFACE
Cement Supervisor: TROY ANGLESTEIN

Sales Order #: 9538858
ADC Used: YES
Elite # 5: STEVE BORSZICH

WPX ENERGY - RWF 312-35

SURFACE



Customer:	WPX ENERGY	Job Date:	10-Jun-2012	Sales Order #:	9538858
Well Description:	RWF312-35	Job Type:	SURFACE	ADC Used:	YES
Company Rep:	RICK OAKS	Cement Supervisor:	TROY ANGLESTEIN	Elite # 5:	STEVE BORSZICH