

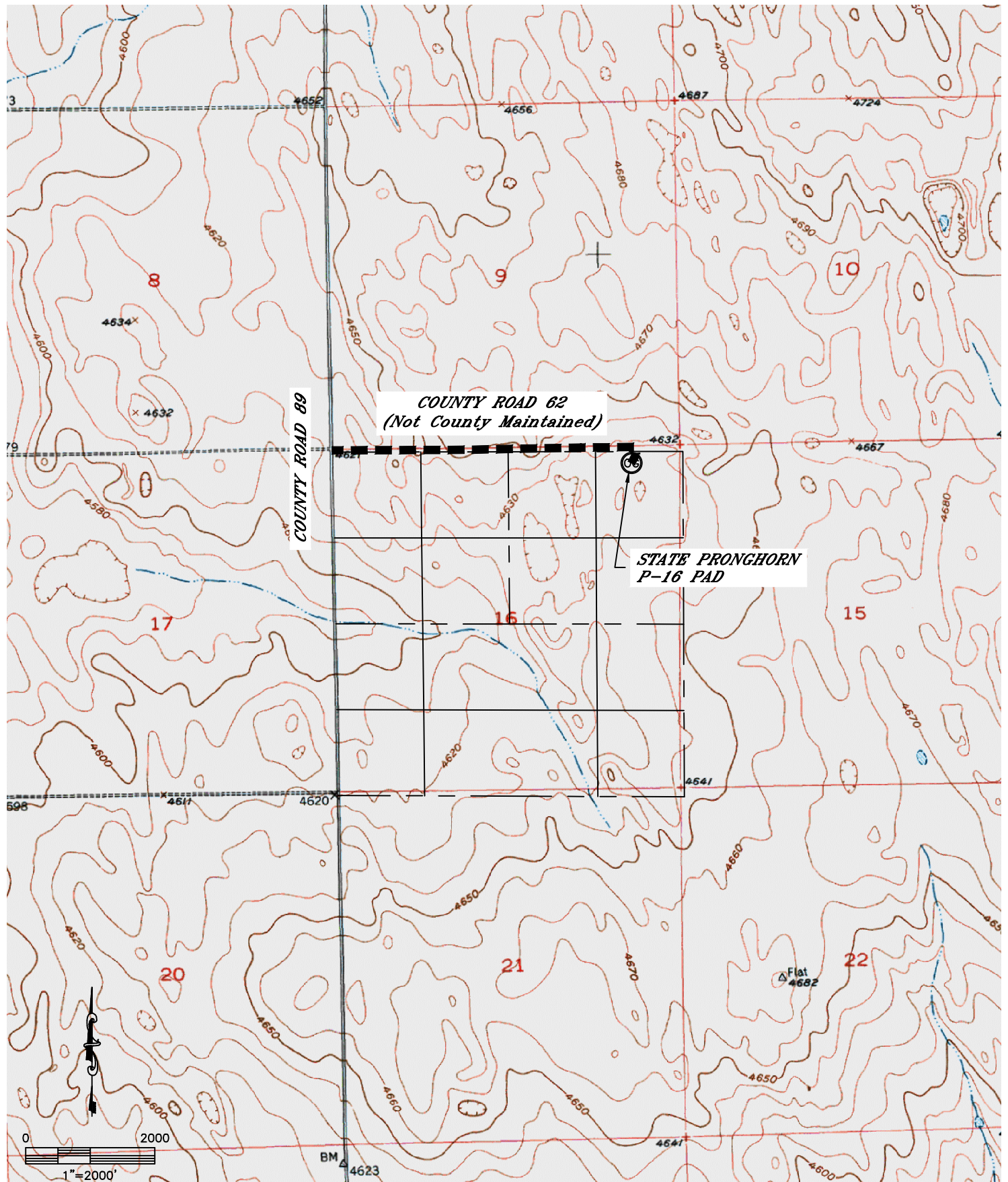


Lat40°, Inc. 1635 Foxtrail Drive, Suite 325 Loveland, CO 970-776-3321

# ACCESS ROAD MAP

STATE PRONGHORN P-16 PAD

SECTION: 16  
TOWNSHIP: 5N  
RANGE: 61W



DATE: 11/06/2012  
PROJECT#: 2012073