

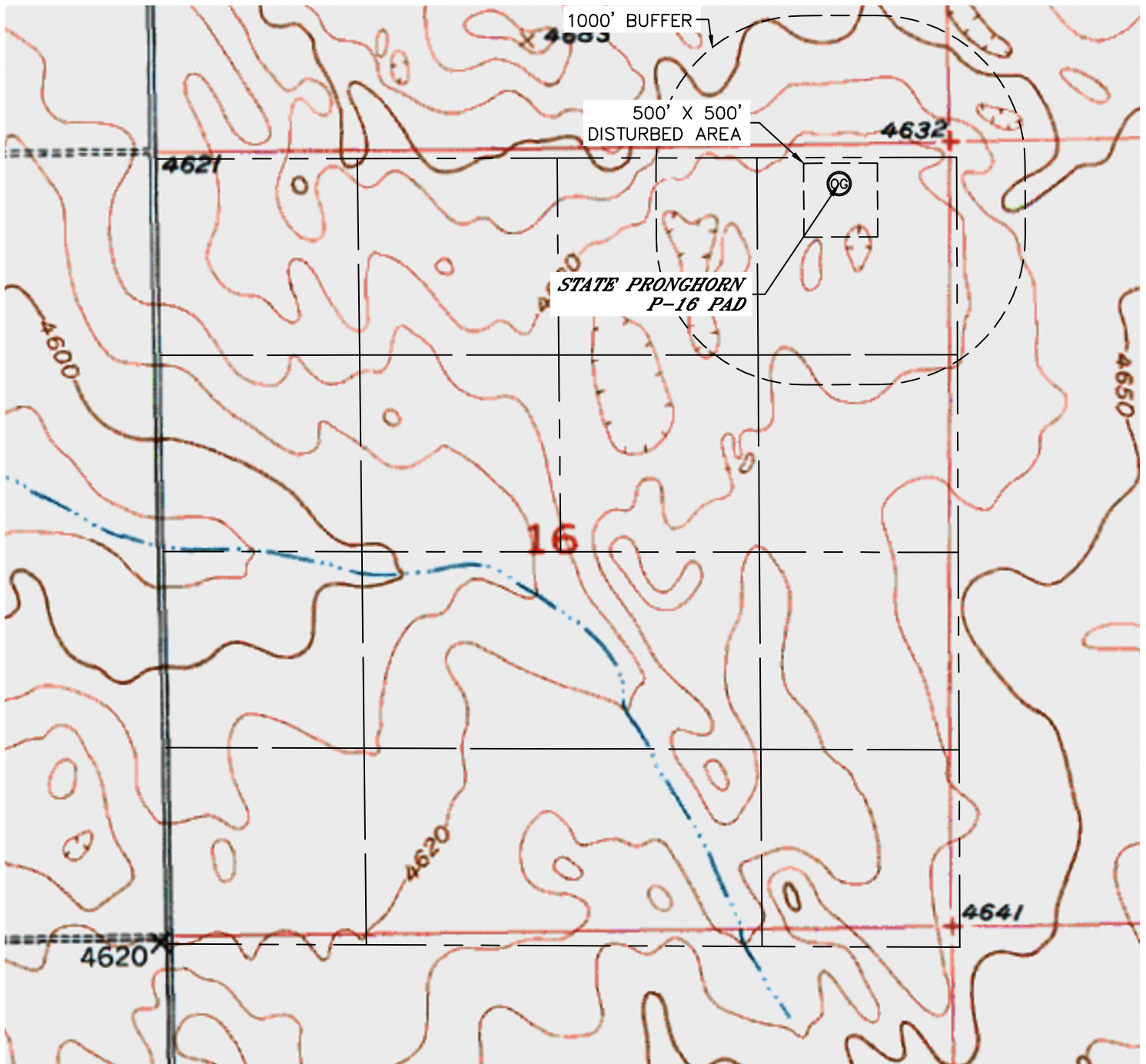


Lat40°, Inc. 1635 Foxtrail Drive, Suite 325 Loveland, CO 970-776-3321

HYDROLOGY MAP

STATE PRONGHORN P-16 PAD

SECTION: 16
TOWNSHIP: 5N
RANGE: 61W



0 1000
1"=1000'

NO VISIBLE SURFACE WATER WITHIN 1000'

DATE: 11/06/2012
PROJECT#: 2012073