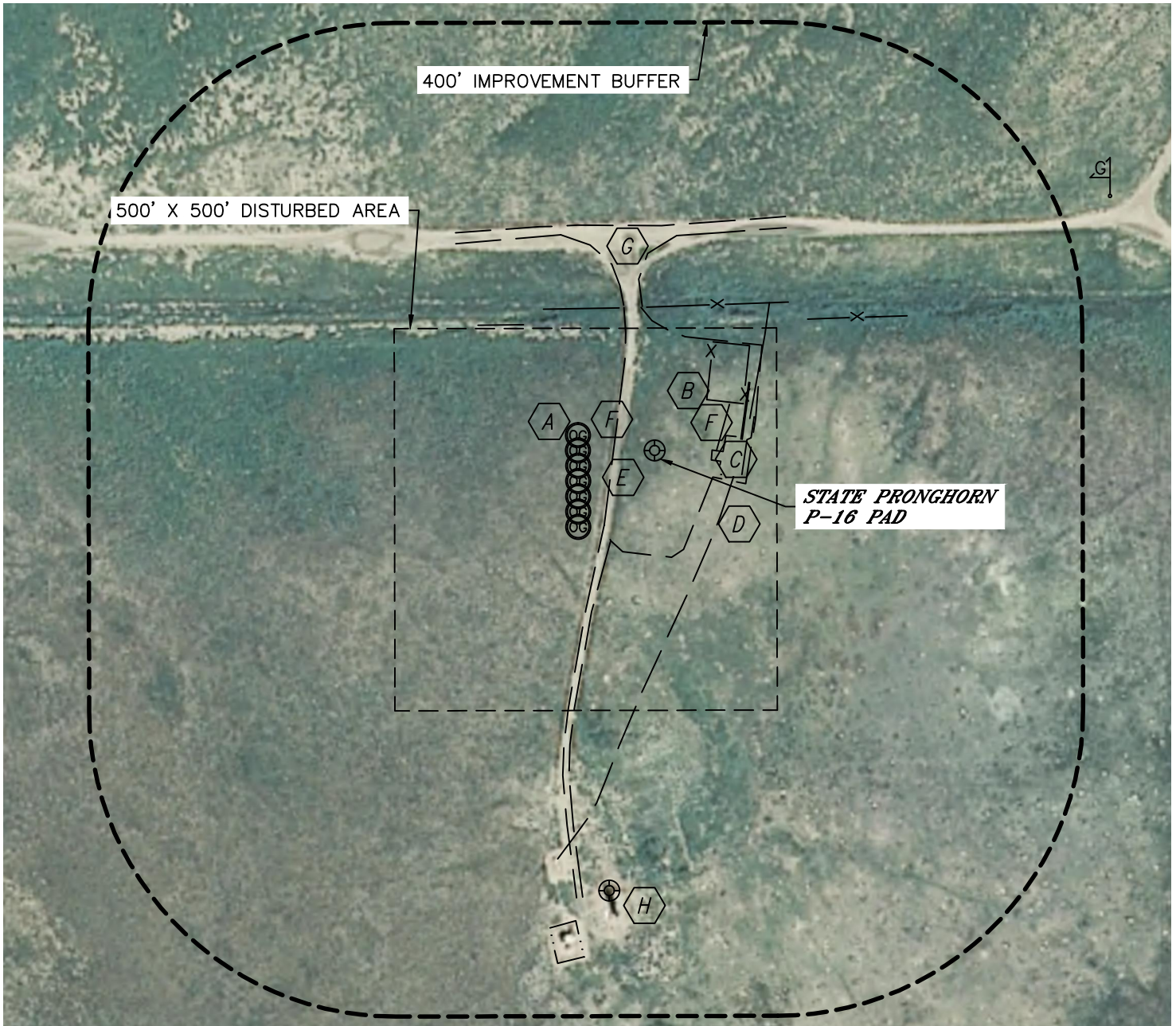




LOCATION DRAWING

STATE PRONGHORN P-16 PAD

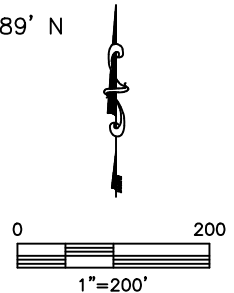
SECTION: 16
TOWNSHIP: 5N
RANGE: 61W



IMPROVEMENTS:

(MEASURED FROM EXISTING STATE PRONGHORN 41-44-16HZ)

- | | | | |
|---|--|---|--|
| A | PROPOSED WELL 102' W | F | UNDERGROUND GAS LINES 81' E, 114' E, 116' E, 132'E |
| B | FENCE 95' NE, 188' N, 192' N | G | FIELD ROAD 132' SW, 289' N |
| C | EX. PRODUCTION FACILITY 75' E, 624' SW | H | EX. WELL 579' S |
| D | 2.5" STEEL PIPE 109' SE | | |
| E | EDGE OF GRAVEL 53' W | | |



NEAREST: BUILDING 5280' +, PUBLIC ROAD 4700' W,
ABOVE GROUND UTILITY 5280' +, RAILROAD 5280' +, PROPERTY LINE 198' N

DATE: rev.11/21/2012
PROJECT#: 2012073