

---

**WPX ENERGY ROCKY MOUNTAIN LLC-EBUS**

---

**KP 524-18  
KOKOPELLI  
Garfield County , Colorado**

**Cement Surface Casing  
22-Jul-2012**

**Post Job Report**

*The Road to Excellence Starts with Safety*

|   |                           |  |                                |
|---|---------------------------|--|--------------------------------|
| <b>Sold To #:</b> 300721                                    | <b>Ship To #:</b> 2939036 | <b>Quote #:</b>  | <b>Sales Order #:</b> 9664489  |
| <b>Customer:</b> WPX ENERGY ROCKY MOUNTAIN LLC-EBUS         |                           | <b>Customer Rep:</b> Valad, Gary                               |                                |
| <b>Well Name:</b> KP  |                           | <b>Well #:</b> 524-18  | <b>API/UWI #:</b> 05-045-20633 |
| <b>Field:</b> KOKOPELLI                                     | <b>City (SAP):</b> RIFLE  | <b>County/Parish:</b> Garfield                                 | <b>State:</b> Colorado         |
| <b>Lat:</b> N 39.522 deg. OR N 39 deg. 31 min. 19.801 secs. |                           | <b>Long:</b> W 107.595 deg. OR W -108 deg. 24 min. 19.17 secs. |                                |
| <b>Contractor:</b> NABORS 574                               |                           | <b>Rig/Platform Name/Num:</b> NABORS 574                       |                                |
| <b>Job Purpose:</b> Cement Surface Casing                   |                           |  |                                |
| <b>Well Type:</b> Development Well                          |                           | <b>Job Type:</b> Cement Surface Casing                         |                                |
| <b>Sales Person:</b> MAYO, MARK                             |                           | <b>Srvc Supervisor:</b> STILLSON, ERIC                         | <b>MBU ID Emp #:</b> 393789    |

**Job Personnel**

| HES Emp Name            | Exp Hrs | Emp #  | HES Emp Name    | Exp Hrs | Emp #  | HES Emp Name     | Exp Hrs | Emp #  |
|-------------------------|---------|--------|-----------------|---------|--------|------------------|---------|--------|
| LYNGSTAD, FREDRICK D    | 4       | 403742 | PARKER, BRANDON | 4       | 503646 | STILLSON, ERIC W | 4       | 393789 |
| WEAVER, CARLTON Russell | 4       | 457698 |                 |         |        |                  |         |        |

**Equipment**

| HES Unit # | Distance-1 way | HES Unit # | Distance-1 way | HES Unit # | Distance-1 way | HES Unit # | Distance-1 way |
|------------|----------------|------------|----------------|------------|----------------|------------|----------------|
| 10011429   | 60 mile        | 10616651C  | 60 mile        | 10867531   | 60 mile        | 10989685   | 60 mile        |
| 11583932   | 60 mile        | 11808827   | 60 mile        |            |                |            |                |

**Job Hours**

| Date    | On Location Hours | Operating Hours | Date | On Location Hours | Operating Hours | Date | On Location Hours | Operating Hours |
|---------|-------------------|-----------------|------|-------------------|-----------------|------|-------------------|-----------------|
| 7-22-12 | 10                | 1               |      |                   |                 |      |                   |                 |

**TOTAL** Total is the sum of each column separately

**Job**

**Job Times**

| Formation Name         | Top      | Bottom            | Called Out  | Date            | Time            | Time Zone |
|------------------------|----------|-------------------|-------------|-----------------|-----------------|-----------|
| Formation Depth (MD)   |          |                   | On Location | 22 - Jul - 2012 | 05:00           | MST       |
| Form Type              | BHST     |                   | Job Started | 22 - Jul - 2012 | 13:38           | MST       |
| Job depth MD           | 1450. ft | Job Depth TVD     | 1450. ft    | Job Completed   | 22 - Jul - 2012 | 14:36     |
| Water Depth            |          | Wk Ht Above Floor | 4. ft       | Departed Loc    | 22 - Jul - 2012 | 16:00     |
| Perforation Depth (MD) | From     | To                |             |                 |                 |           |

**Well Data**

| Description    | New / Used | Max pressure psig | Size in | ID in | Weight lbm/ft | Thread | Grade | Top MD ft | Bottom MD ft | Top TVD ft | Bottom TVD ft |
|----------------|------------|-------------------|---------|-------|---------------|--------|-------|-----------|--------------|------------|---------------|
| OPEN HOLE      |            |                   |         | 13.5  |               |        |       | .         | 1450.        |            |               |
| SURFACE CASING | Unknown    |                   | 9.625   | 9.001 | 32.3          |        |       | .         | 1441.        |            |               |

**Sales/Rental/3<sup>rd</sup> Party (HES)**

| Description                               | Qty | Qty uom | Depth | Supplier |
|---|-----|---------|-------|----------|
| R/A DENSOMETER W/CHART RECORDER,/JOB,ZI   | 1   | JOB     |       |          |
| PORT. DATA ACQUIS. W/OPTICEM RT W/HES     | 1   | EA      |       |          |
| ADC (AUTO DENSITY CTRL) SYS, /JOB,ZI      | 1   | JOB     |       |          |
| PLUG,CMTG, TOP,9 5/8,HWE,8.16 MIN/9.06 MA | 1   | EA      |       |          |

**Tools and Accessories**

| Type         | Size | Qty | Make | Depth | Type        | Size | Qty | Make | Depth | Type           | Size  | Qty | Make |
|--------------|------|-----|------|-------|-------------|------|-----|------|-------|----------------|-------|-----|------|
| Guide Shoe   |      |     |      |       | Packer      |      |     |      |       | Top Plug       | 9.625 | 1   |      |
| Float Shoe   |      |     |      |       | Bridge Plug |      |     |      |       | Bottom Plug    |       |     |      |
| Float Collar |      |     |      |       | Retainer    |      |     |      |       | SSR plug set   |       |     |      |
| Insert Float |      |     |      |       |             |      |     |      |       | Plug Container | 9.625 | 1   |      |
| Stage Tool   |      |     |      |       |             |      |     |      |       | Centralizers   |       |     |      |

| Miscellaneous Materials                  |                    |                                    |        |                 |                                   |                 |                        |              |                  |              |                        |     |
|--|--------------------|------------------------------------|--------|-----------------|-----------------------------------|-----------------|------------------------|--------------|------------------|--------------|------------------------|-----|
| Gelling Agt                              |                    | Conc                               |        | Surfactant      |                                   | Conc            |                        | Acid Type    |                  | Qty          | Conc                   | %   |
| Treatment Fld                            |                    | Conc                               |        | Inhibitor       |                                   | Conc            |                        | Sand Type    |                  | Size         |                        | Qty |
| Fluid Data                               |                    |                                    |        |                 |                                   |                 |                        |              |                  |              |                        |     |
| Stage/Plug #: 1                          |                    |                                    |        |                 |                                   |                 |                        |              |                  |              |                        |     |
| Fluid #                                  | Stage Type         | Fluid Name                         |        |                 | Qty                               | Qty uom         | Mixing Density lbm/gal | Yield ft3/sk | Mix Fluid Gal/sk | Rate bbl/min | Total Mix Fluid Gal/sk |     |
| 1  | Fresh Water        |                                    |        |                 | 20.00                             | bbl             | 8.33                   | .0           | .0               | 6.0          |                        |     |
| 2  | VersaCem Lead      | VERSACEM (TM) SYSTEM (452010)      |        |                 | 225.0                             | sacks           | 12.3                   | 2.38         | 13.75            | 8.0          | 13.75                  |     |
|  | 0.25 lbm           | POLY-E-FLAKE (101216940)           |        |                 |                                   |                 |                        |              |                  |              |                        |     |
|  | 0.25 %             | D-AIR 5000, 50 LB SACK (102068797) |        |                 |                                   |                 |                        |              |                  |              |                        |     |
|  | 13.75 Gal          | FRESH WATER                        |        |                 |                                   |                 |                        |              |                  |              |                        |     |
| 3  | VersaCem Tail      | VERSACEM (TM) SYSTEM (452010)      |        |                 | 160.0                             | sacks           | 12.8                   | 2.11         | 11.75            | 8.0          | 11.75                  |     |
|  | 11.75 Gal          | FRESH WATER                        |        |                 |                                   |                 |                        |              |                  |              |                        |     |
| 4  | Displacement Fluid |                                    |        |                 | 107.20                            | bbl             | 8.33                   | .0           | .0               | 6.0          |                        |     |
| Calculated Values                        |                    | Pressures                          |        |                 | Volumes                           |                 |                        |              |                  |              |                        |     |
| Displacement                             | 109.9              | Shut In: Instant                   |        |                 | Lost Returns                      | 0               | Cement Slurry          |              | 155              | Pad          |                        |     |
| Top Of Cement                            | SURFACE            | 5 Min                              |        |                 | Cement Returns                    | 30              | Actual Displacement    |              | 107.2            | Treatment    |                        |     |
| Frac Gradient                            |                    | 15 Min                             |        |                 | Spacers                           | 20              | Load and Breakdown     |              |                  | Total Job    |                        |     |
| Rates                                    |                    |                                    |        |                 |                                   |                 |                        |              |                  |              |                        |     |
| Circulating                              | RIG                | Mixing                             |        | 8               | Displacement                      | 6               | Avg. Job               |              | 7                |              |                        |     |
| Cement Left In Pipe                      | Amount             | 44 ft                              | Reason | Shoe Joint      |                                   |                 |                        |              |                  |              |                        |     |
| Frac Ring # 1 @                          | ID                 | Frac ring # 2 @                    | ID     | Frac Ring # 3 @ | ID                                | Frac Ring # 4 @ | ID                     |              |                  |              |                        |     |
| The Information Stated Herein Is Correct |                    |                                    |        |                 | Customer Representative Signature |                 |                        |              |                  |              |                        |     |

*The Road to Excellence Starts with Safety*

|   |                           |  |                                |
|---|---------------------------|--|--------------------------------|
| <b>Sold To #:</b> 300721                                    | <b>Ship To #:</b> 2939036 | <b>Quote #:</b>  | <b>Sales Order #:</b> 9664489  |
| <b>Customer:</b> WPX ENERGY ROCKY MOUNTAIN LLC-EBUS         |                           | <b>Customer Rep:</b> Valad, Gary                               |                                |
| <b>Well Name:</b> KP  |                           | <b>Well #:</b> 524-18  | <b>API/UWI #:</b> 05-045-20633 |
| <b>Field:</b> KOKOPELLI                                     | <b>City (SAP):</b> RIFLE  | <b>County/Parish:</b> Garfield                                 | <b>State:</b> Colorado         |
| <b>Legal Description:</b>                                   |                           |  |                                |
| <b>Lat:</b> N 39.522 deg. OR N 39 deg. 31 min. 19.801 secs. |                           | <b>Long:</b> W 107.595 deg. OR W -108 deg. 24 min. 19.17 secs. |                                |
| <b>Contractor:</b> NABORS 574                               |                           | <b>Rig/Platform Name/Num:</b> NABORS 574                       |                                |
| <b>Job Purpose:</b> Cement Surface Casing                   |                           |  | <b>Ticket Amount:</b>          |
| <b>Well Type:</b> Development Well                          |                           | <b>Job Type:</b> Cement Surface Casing                         |                                |
| <b>Sales Person:</b> MAYO, MARK                             |                           | <b>Srvc Supervisor:</b> STILLSON, ERIC                         | <b>MBU ID Emp #:</b> 393789    |

| Activity Description                  | Date/Time           | Cht # | Rate bbl/min | Volume bbl |       | Pressure psig |        | Comments  |
|---------------------------------------|---------------------|-------|--------------|------------|-------|---------------|--------|---|
|                                       |                     |       |              | Stage      | Total | Tubing        | Casing |   |
| Call Out                              | 07/22/2012<br>00:30 |       |              |            |       |               |        |   |
| Pre-Convoy Safety Meeting             | 07/22/2012<br>02:55 |       |              |            |       |               |        | ENTIRE CREW, OBSERVE ALL SAFE DRIVING PROCEDURES  |
| Arrive At Loc                         | 07/22/2012<br>05:00 |       |              |            |       |               |        | ARRIVED EARLY. RIG NOT STARTED CASING YET.  |
| Assessment Of Location Safety Meeting | 07/22/2012<br>09:10 |       |              |            |       |               |        | REVIEWED EMERGENCY PLAN, ASSESSED WORK AREA AND SPOTTED EQUIPMENT.  |
| Pre-Rig Up Safety Meeting             | 07/22/2012<br>09:25 |       |              |            |       |               |        | ENTIRE CREW, WALKED THROUGH RIG UP LOOKING FOR HAZARDS.   |
| Rig-Up Equipment                      | 07/22/2012<br>09:30 |       |              |            |       |               |        | 1 PICK UP, 1 HT400 PUMP TRUCK, 1 660 BULK CEMENT TRUCK, 1 BODY LOAD CEMENT TRUCK, 1 QUICK LATCH HEAD WITH PLUG, |
| Pre-Job Safety Meeting                | 07/22/2012<br>13:20 |       |              |            |       |               |        | ENTIRE CREW, RIG CREW, AND CO REP.  |
| Start Job                             | 07/22/2012<br>13:38 |       |              |            |       |               |        | TD 1450 TP 1441 SJ 44 FC 1397 MW 10.5 PPG, 9 5/8 32.3# CASING IN 13 1/2 HOLE. RIG CIRC APPROX 1 HR.             |
| Pump Water                            | 07/22/2012<br>13:38 |       | 2            | 1          |       |               | 55.0   | FILL LINES BEFORE TESTING   |

| Activity Description                   | Date/Time           | Cht # | Rate bbl/min | Volume bbl |       | Pressure psig |        | Comments  |
|--|---------------------|-------|--------------|------------|-------|---------------|--------|---|
|  |                     |       |              | Stage      | Total | Tubing        | Casing |   |
| Pressure Test                          | 07/22/2012<br>13:39 |       | 0.5          | 0.1        |       |               | 2775.0 | HELD PRESSURE FOR 2 MIN, PRESSURE HELD, NO LEAKS.   |
| Pump Spacer 1                          | 07/22/2012<br>13:43 |       | 6            | 20         |       |               | 190.0  | FRESH WATER, PUMPED AT 2 BPM UNTIL CEMENT TUB UP TO WEIGHT AND WEIGHED WITH SCALES, SPED RATE TO 6 BPM AT 13 BBLs GONE. |
| Pump Lead Cement                       | 07/22/2012<br>13:52 |       | 8            | 95         |       |               | 360.0  | 225 SKS VERSACEM, 12.3 PPG, 2.38 CUFT/SK, 13.75 GAL/SK.   |
| Pump Tail Cement                       | 07/22/2012<br>14:04 |       | 8            | 60         |       |               | 320.0  | 160 SKS VERSACEM, 12.8 PPG, 2.11 CUFT/SK, 11.75 GAL/SK.   |
| Shutdown                               | 07/22/2012<br>14:11 |       |              |            |       |               |        |   |
| Drop Top Plug                          | 07/22/2012<br>14:13 |       |              |            |       |               |        | VARIIFIED PLUG LEFT CONTAINER.  |
| Pump Displacement                      | 07/22/2012<br>14:14 |       | 10           | 109.9      |       |               | 430.0  | FRESH WATER, CEMENT TO SURFACE AT 77 BBLs GONE, 30 BBLs OF CEMENT TO SURFACE. USED 80 LBS SUGAR.                        |
| Slow Rate                              | 07/22/2012<br>14:30 |       | 2            |            | 100   |               | 337.0  | SLOWED RATE TO 2 BPM TO BUMP PLUG.  |
| Bump Plug                              | 07/22/2012<br>14:34 |       | 2            |            | 107.2 |               | 905.0  | PLUG LANDED AT 107.2 BBLs GONE AT 337 PSI, BUMPED UP TO 905 PSI AND HELD FOR 2 MIN PER CO REP.                          |
| Check Floats                           | 07/22/2012<br>14:36 |       |              |            |       |               |        | FLOATS HELD, WHEN RELEASED PRESSURE GOT 1/2 BBL OF WATER BACK TO TRUCK.   |
| End Job                                | 07/22/2012<br>14:37 |       |              |            |       |               |        | GOOD RETURNS THROUGHOUT, DID NOT RECIPROCATE PIPE.  |
| Post-Job Safety Meeting (Pre Rig-Down) | 07/22/2012<br>14:40 |       |              |            |       |               |        | ENTIRE CREW   |

| Activity Description      | Date/Time           | Cht # | Rate bbl/min | Volume bbl |       | Pressure psig |        | Comments  |
|---------------------------|---------------------|-------|--------------|------------|-------|---------------|--------|---|
|                           |                     |       |              | Stage      | Total | Tubing        | Casing |   |
| Rig-Down Equipment        | 07/22/2012<br>15:00 |       |              |            |       |               |        |   |
| Pre-Convoy Safety Meeting | 07/22/2012<br>15:55 |       |              |            |       |               |        | ENTIRE CREW,<br>OBSERVE ALL SAFE<br>DRIVING<br>PROCEDURES         |
| Crew Leave Location       | 07/22/2012<br>16:00 |       |              |            |       |               |        | THANK YOU FOR<br>USING HALLIBURTON,<br>ERIC STILLSON AND<br>CREW. |

# HALLIBURTON

## Water Analysis Report

Company: WPX

Submitted by: ERIC STILLSON

Attention: \_\_\_\_\_

Lease KP

Well # 524-18

Date: 7/22/2012

Date Rec.: 7/22/2012

S.O.# 9664489

Job Type: SURFACE

|                             |              |                       |
|-----------------------------|--------------|-----------------------|
| Specific Gravity            | <i>MAX</i>   | <b>1</b>              |
| pH                          | <i>8</i>     | <b>7</b>              |
| Potassium (K)               | <i>5000</i>  | <b>200</b> Mg / L     |
| Calcium (Ca)                | <i>500</i>   | <b>120</b> Mg / L     |
| Iron (FE2)                  | <i>300</i>   | <b>0</b> Mg / L       |
| Chlorides (Cl)              | <i>3000</i>  | <b>200</b> Mg / L     |
| Sulfates (SO <sub>4</sub> ) | <i>1500</i>  | <b>&lt;200</b> Mg / L |
| Chlorine (Cl <sub>2</sub> ) |              | <b>0</b> Mg / L       |
| Temp                        | <i>40-80</i> | <b>64</b> Deg         |
| Total Dissolved Solids      |              | <b>470</b> Mg / L     |

Respectfully: ERIC STILLSON

Title: CEMENTING SUPERVISOR

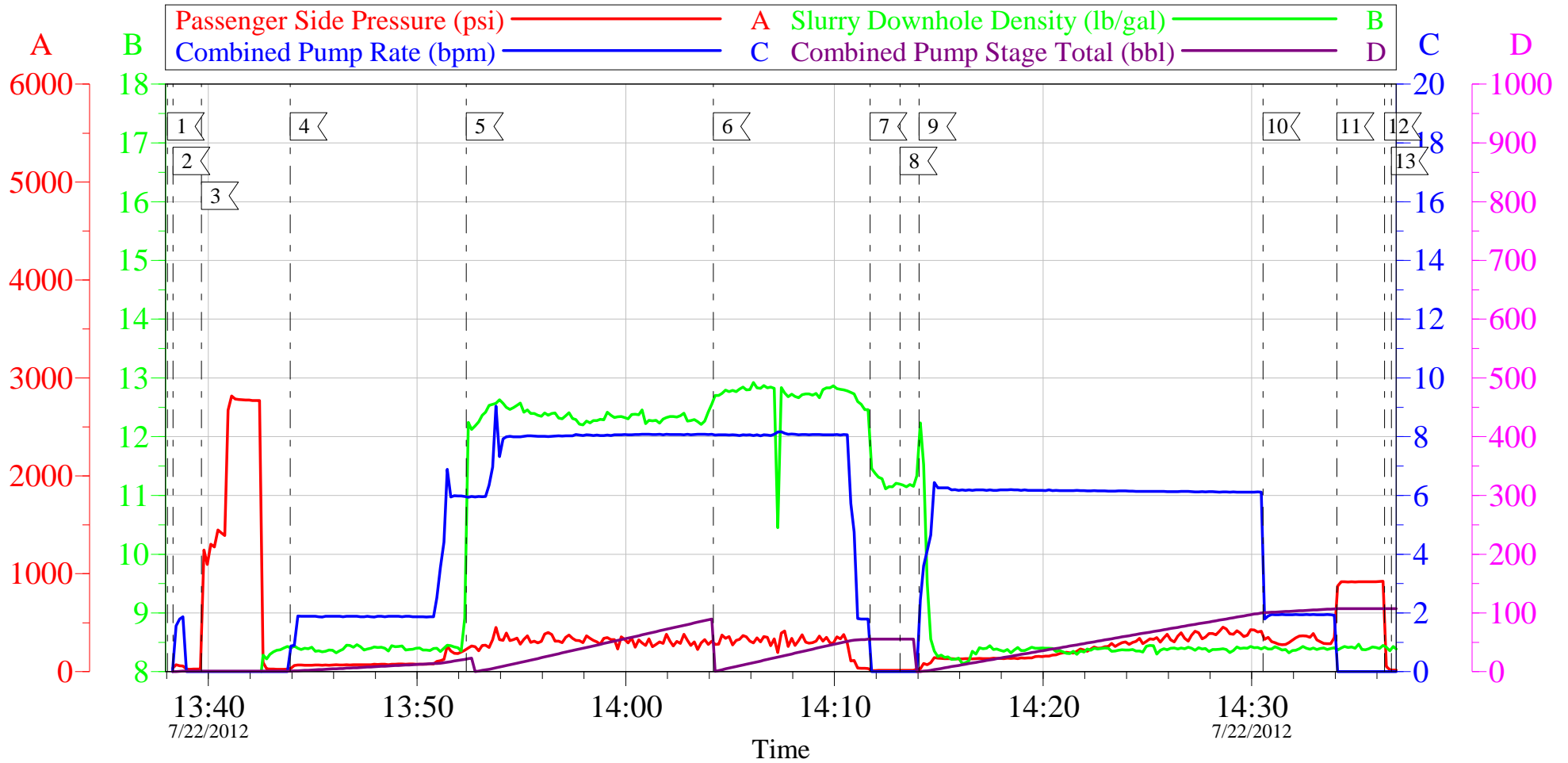
Location: Grand Junction, CO

NOTICE:

This report is limited to the described sample tested. Any person using or relying on this report agrees that Halliburton shall not be liable for any loss or damage whether due to act or omission resulting from such report or its use.

# WPX - KP 524-18

9 5/8" SURFACE

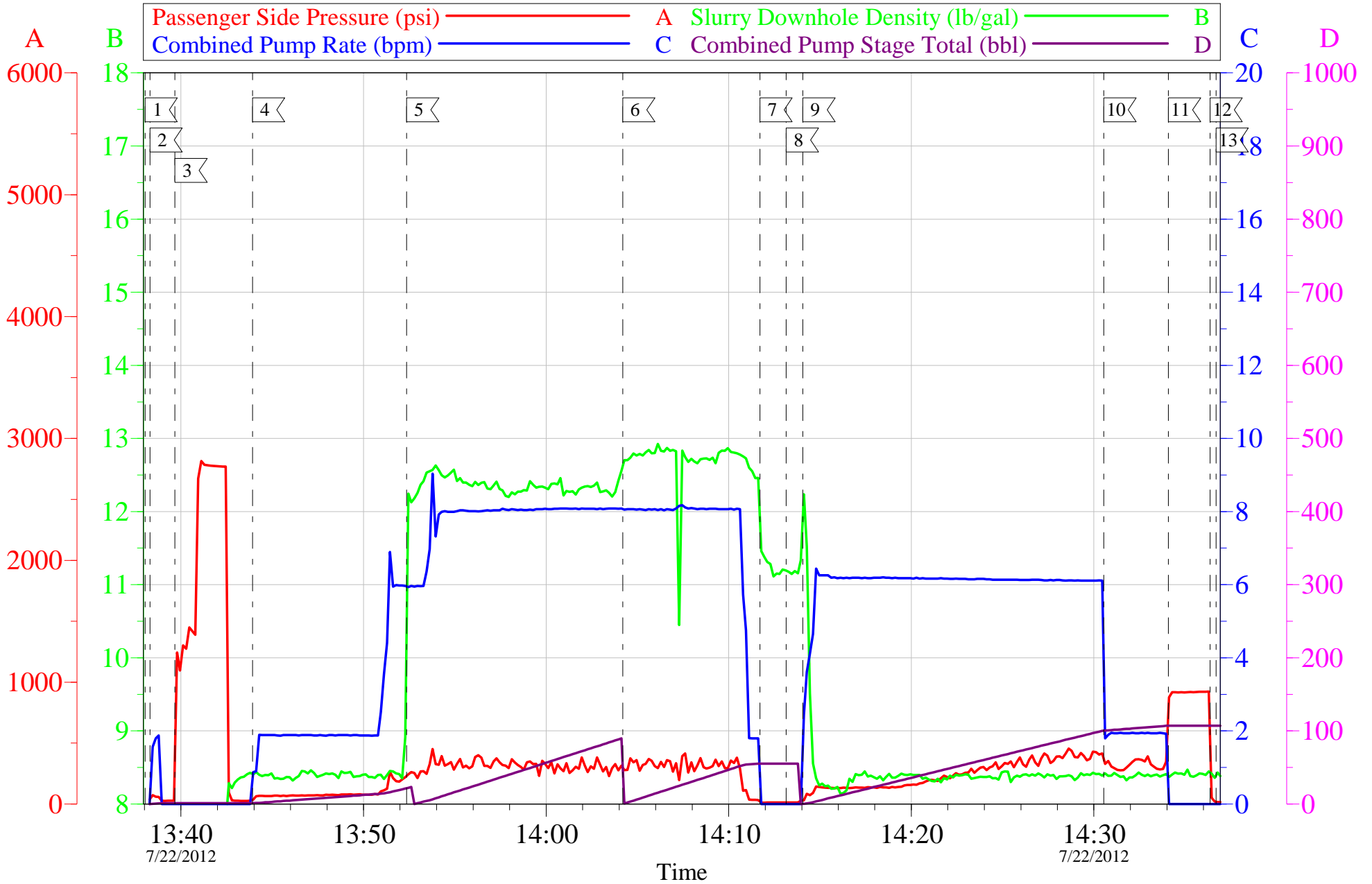


| Local Event Log |                   |          |    |                  |          |    |                   |          |
|-----------------|-------------------|----------|----|------------------|----------|----|-------------------|----------|
| 1               | START JOB         | 13:38:02 | 2  | FILL LINES       | 13:38:18 | 3  | TEST LINES        | 13:39:40 |
| 4               | PUMP WATER SPACER | 13:43:55 | 5  | PUMP LEAD CEMENT | 13:52:21 | 6  | PUMP TAIL CEMENT  | 14:04:11 |
| 7               | SHUTDOWN          | 14:11:43 | 8  | DROP PLUG        | 14:13:09 | 9  | PUMP DISPLACEMENT | 14:14:04 |
| 10              | SLOW RATE         | 14:30:33 | 11 | BUMP PLUG        | 14:34:05 | 12 | CHECK FLOATS      | 14:36:22 |
| 13              | END JOB           | 14:36:41 |    |                  |          |    |                   |          |

|                   |            |                    |               |                |                |
|-------------------|------------|--------------------|---------------|----------------|----------------|
| Customer:         | WPX        | Job Date:          | 22-Jul-2012   | Sales Order #: | 9664489        |
| Well Description: | KP 524-18  | Job Type:          | SURFACE       | ADC Used:      | YES            |
| Company Rep:      | GARY VALAD | Cement Supervisor: | ERIC STILLSON | Elite #4:      | BRANDON PARKER |

# WPX - KP 524-18

9 5/8" SURFACE



|                             |                                  |                          |
|-----------------------------|----------------------------------|--------------------------|
| Customer: WPX               | Job Date: 22-Jul-2012            | Sales Order #: 9664489   |
| Well Description: KP 524-18 | Job Type: SURFACE                | ADC Used: YES            |
| Company Rep: GARY VALAD     | Cement Supervisor: ERIC STILLSON | Elite #4: BRANDON PARKER |

|  |  |  |
|--|--|--|
| <b>Sales Order #:</b><br>9664489                       | <b>Line Item:</b><br>10                          | <b>Survey Conducted Date:</b><br>7/22/2012                 |
| <b>Customer:</b><br>WPX ENERGY ROCKY MOUNTAIN LLC-EBUS |  | <b>Job Type (BOM):</b><br>CMT SURFACE CASING BOM           |
| <b>Customer Representative:</b><br>GARY VALAD          |  | <b>API / UWI: (leave blank if unknown)</b><br>05-045-20633 |
| <b>Well Name:</b><br>KP                                |  | <b>Well Number:</b><br>524-18                              |
| <b>Well Type:</b><br>Development Well                  | <b>Well Country:</b><br>United States of America |  |
| <b>H2S Present:</b><br>No                              | <b>Well State:</b><br>Colorado                   | <b>Well County:</b><br>Garfield                            |

Dear Customer,

We hope that you were satisfied with the service quality of this job performed by Halliburton. It is the aim of our management and service personnel to deliver equipment and service of a standard unmatched in the service sector of the energy industry.

Please take the time to let us know if our performance met with your satisfaction. Please be as critical as possible to ensure we constantly improve our service. Your comments are of great value to us and are intended for the exclusive use of Halliburton.

### CUSTOMER SATISFACTION SURVEY

| CATEGORY                | CUSTOMER SATISFACTION RESPONSE                                 |                         |
|-------------------------|--|-------------------------|
| Survey Conducted Date   | The date the survey was conducted                              | 7/22/2012               |
| Survey Interviewer      | The survey interviewer is the person who initiated the survey. | ERIC STILLSON (HX26907) |
| Customer Participation  | Did the customer participate in this survey? (Y/N)             | Yes                     |
| Customer Representative | Enter the Customer representative name                         | GARY VALAD              |
| HSE                     | Was our HSE performance satisfactory? Circle Y or N            | Yes                     |
| Equipment               | Were you satisfied with our Equipment? Circle Y or N           | Yes                     |
| Personnel               | Were you satisfied with our people? Circle Y or N              | Yes                     |
| Customer Comment        | Customer's Comment   | GOOD JOB                |

|                           |
|---------------------------|
| <b>CUSTOMER SIGNATURE</b> |
|---------------------------|

|  |  |  |
|--|--|--|
| <b>Sales Order #:</b><br>9664489                       | <b>Line Item:</b><br>10                          | <b>Survey Conducted Date:</b><br>7/22/2012                 |
| <b>Customer:</b><br>WPX ENERGY ROCKY MOUNTAIN LLC-EBUS |  | <b>Job Type (BOM):</b><br>CMT SURFACE CASING BOM           |
| <b>Customer Representative:</b><br>GARY VALAD          |  | <b>API / UWI: (leave blank if unknown)</b><br>05-045-20633 |
| <b>Well Name:</b><br>KP                                |  | <b>Well Number:</b><br>524-18                              |
| <b>Well Type:</b><br>Development Well                  | <b>Well Country:</b><br>United States of America |  |
| <b>H2S Present:</b><br>No                              | <b>Well State:</b><br>Colorado                   | <b>Well County:</b><br>Garfield                            |

### KEY PERFORMANCE INDICATORS

|                                   |           |
|-----------------------------------|-----------|
| General                           |           |
| <b>Survey Conducted Date</b>      | 7/22/2012 |
| The date the survey was conducted |           |

|   |                         |
|---|-------------------------|
| Cementing KPI Survey  |                         |
| <b>Type of Job</b>  | 0                       |
| Select the type of job. (Cementing or Non-Cementing)  |                         |
| <b>Select the Maximum Deviation range for this Job</b>  | Vertical                |
| What is the highest deviation for the job you just completed? This may not be the maximum well deviation.   |                         |
| <b>Total Operating Time (hours)</b>   | 4                       |
| Total Operating Hours Including Rig-up, Pumping, Rig-down. Enter in decimal format.   |                         |
| <b>HSE Incident, Accident, Injury</b>   | No                      |
| HSE Incident, Accident, Injury. This should be recordable incidents only.   |                         |
| <b>Was the job purpose achieved?</b>  | Yes                     |
| Was the job delivered correctly as per customer agreed design?  |                         |
| <b>Operating Hours (Pumping Hours)</b>  | 1                       |
| Total number of hours pumping fluid on this job. Enter in decimal format.   |                         |
| <b>Customer Non-Productive Rig Time (hrs)</b>   | 0                       |
| Lost time due to Halliburton in the start, execution, or completion of an ordered service or product, or delays in a follow-on service. Enter in decimal format. 0 if none. |                         |
| <b>Type of Rig Classification Job Was Performed</b>   | Drilling Rig (Portable) |
| Type Of Rig (classification) Job Was Performed On   |                         |
| <b>Number Of JSAs Performed</b>   | 7                       |
| Number Of Jsas Performed  |                         |
| <b>Number of Unplanned Shutdowns</b>  | 0                       |
| Unplanned shutdown is when injection stops for any period of time.  |                         |
| <b>Was this a Primary Cement Job (Yes / No)</b>   | Yes                     |

|  |  |  |
|--|--|--|
| <b>Sales Order #:</b><br>9664489                       | <b>Line Item:</b><br>10                          | <b>Survey Conducted Date:</b><br>7/22/2012                 |
| <b>Customer:</b><br>WPX ENERGY ROCKY MOUNTAIN LLC-EBUS |  | <b>Job Type (BOM):</b><br>CMT SURFACE CASING BOM           |
| <b>Customer Representative:</b><br>GARY VALAD          |  | <b>API / UWI: (leave blank if unknown)</b><br>05-045-20633 |
| <b>Well Name:</b><br>KP                                |  | <b>Well Number:</b><br>524-18                              |
| <b>Well Type:</b><br>Development Well                  | <b>Well Country:</b><br>United States of America |  |
| <b>H2S Present:</b><br>No                              | <b>Well State:</b><br>Colorado                   | <b>Well County:</b><br>Garfield                            |

|  |     |
|--|-----|
| Primary Cement Job= Casing job, Liner job, or Tie-back job.  |     |
| <b>Did We Run Wiper Plugs?</b><br>Did We Run Top And Bottom Casing Wiper Plugs?  | Top |
| <b>Mixing Density of Job Stayed in Designed Density Range (0-100%)</b><br>Density Range defined as +/- .20 ppg. Calculation: Total BBLs cement mixed at designed density divided by total BBLs of cement multiplied by 100       | 95  |
| <b>Was Automated Density Control Used?</b><br>Was Automated Density Control (ADC) Used ?   | Yes |
| <b>Pump Rate (percent) of Job Stayed At Designed Pump Rate</b><br>Pump Rate range defined as +/- 1bbl/min. Calculation: Total BBLs of fluid pumped at the designed rate divided by Total BBLs of fluid pumped, multiplied by 100 | 97  |
| <b>Nbr of Remedial Sqz Jobs Rqd - Competition</b><br>Number Of Remedial Squeeze Jobs Required After Primary Job Performed By Competition   | 0   |
| <b>Nbr of Remedial Plug Jobs Rqd - HES</b><br>Number Of Remedial Plug Jobs Needed After Primary Plug Pumped By HES   | 0   |
| <b>Nbr of Remedial Sqz Jobs Rqd - HES</b><br>Number Of Remedial Squeeze Jobs Required After Primary Job Performed By HES   | 0   |