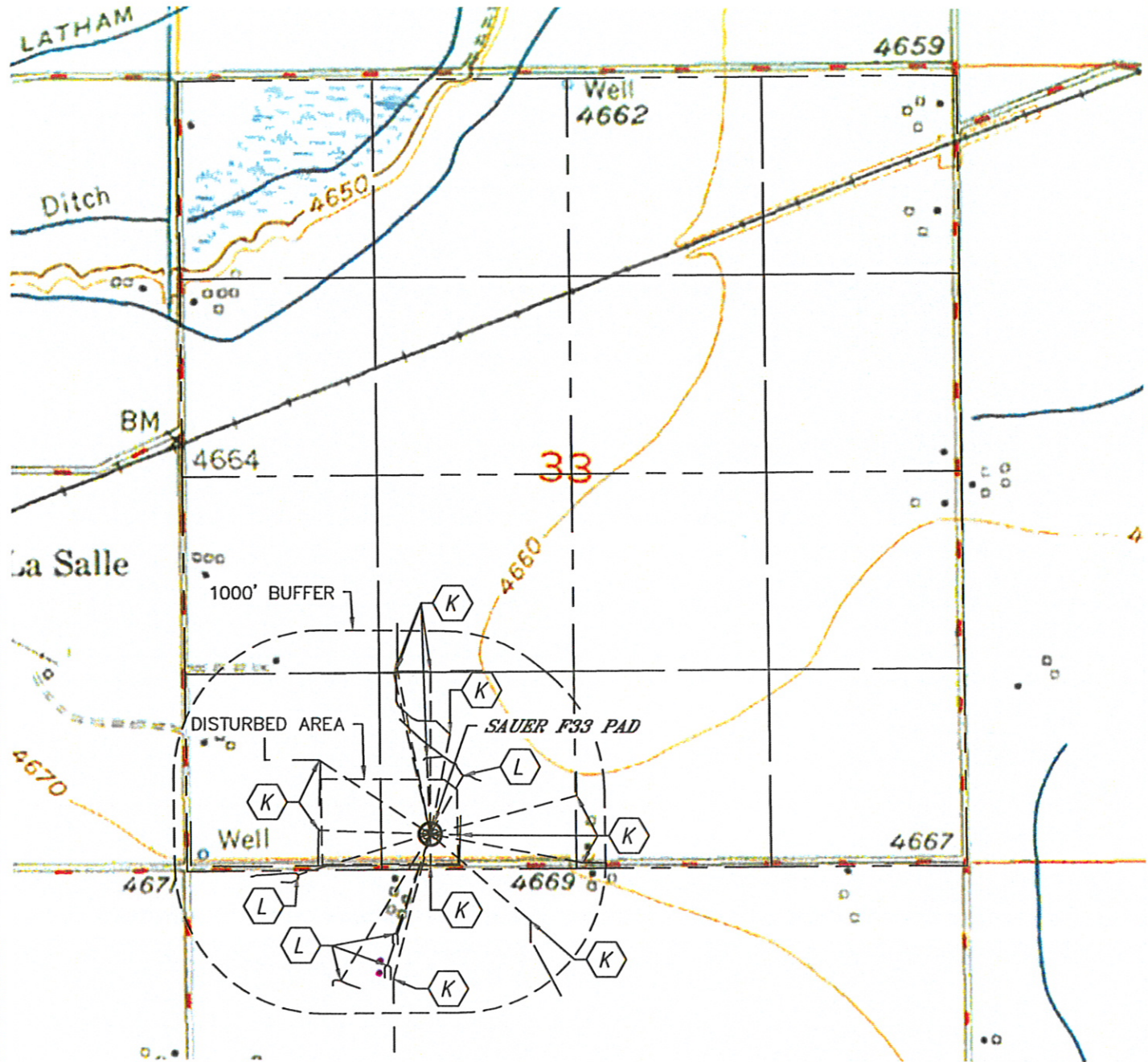


Lat40°, Inc. 1635 Foxtrail Drive, Suite 325 Loveland, CO 970-776-3321

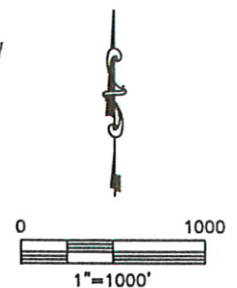
HYDROLOGY MAP

SAUER F33-76-1HM PAD

SECTION: 33
TOWNSHIP: 5N
RANGE: 65W



- (K) DITCH 203' E, 210' S, 512' N, 687' NE, 759' W, 903' NW
1111' & 1130' NW, 1096' N, 1030' NE, 1050' & 890' SE, 1006' SW
- (L) POND 455' NE, 711', 932', 1162', 947' SW



DATE: rev.10/5/2012
PROJECT#: 2011334