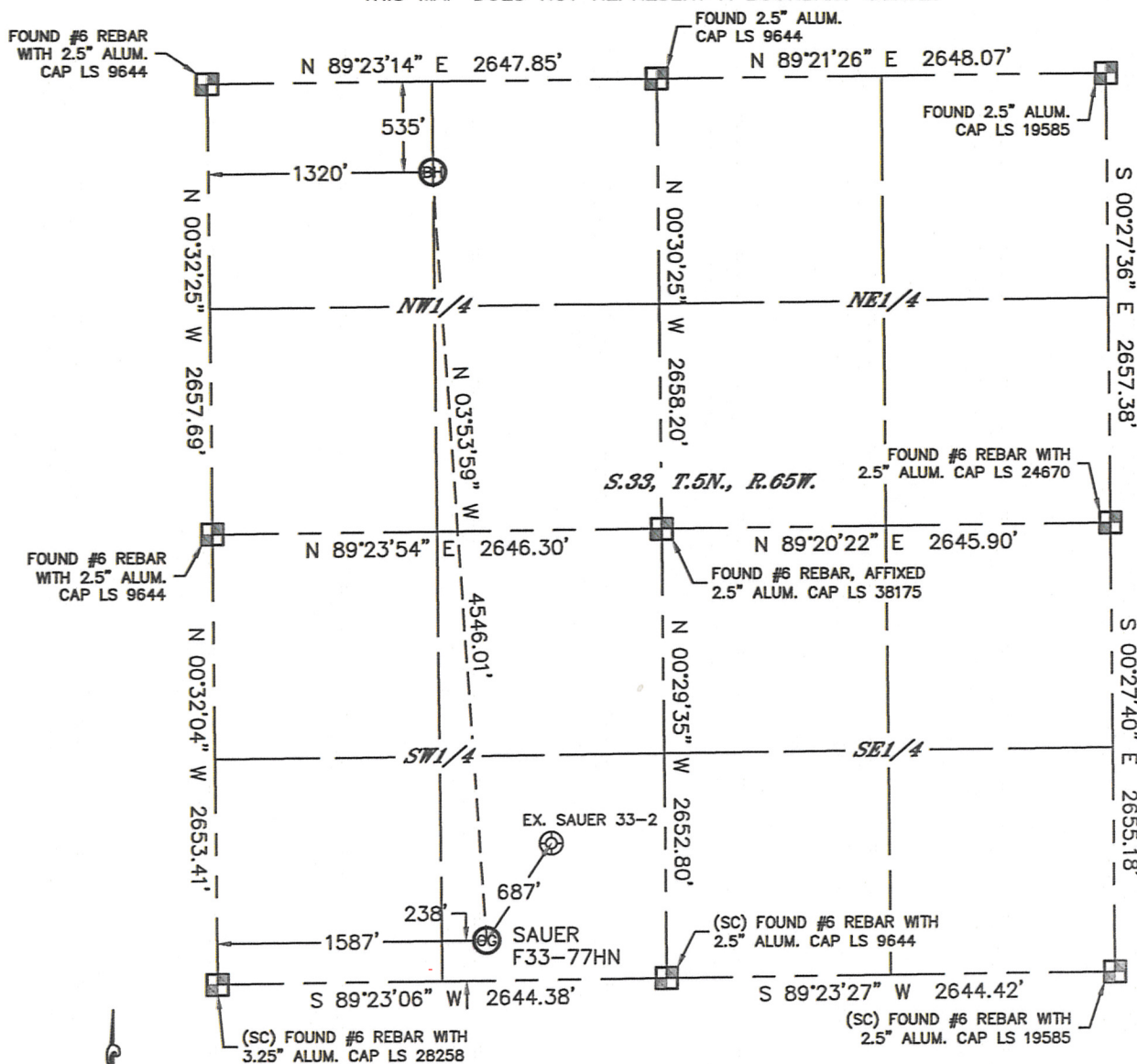


Lat40°, Inc. 1635 Foxtrail Drive, Suite 325 Loveland, CO 970-776-3321

# WELL LOCATION CERTIFICATE

THIS MAP DOES NOT REPRESENT A BOUNDARY SURVEY

SECTION: 33  
TOWNSHIP: 5N  
RANGE: 65W



In accordance with a request from Jacob Rice with Noble Energy Inc. Lat40°, Inc. has determined the surface location of the SAUER F33-77HN to be 238' from the SOUTH line and 1587' from the WEST line and the bottom hole to be 535' from the NORTH line and 1320' from the WEST line as measured at right angles from the section lines of Section 33, Township 5 North, Range 65 West of the Sixth Principal Meridian, County of Weld, State of Colorado.

I hereby state that this Well Location Certificate was prepared by me, or under my direct supervision, that the fieldwork was completed on 9/7/2012, for and on behalf of Noble Energy Inc. That this is not a Land Survey Plat or an Improvement Survey Plat, and that it is not to be relied upon for establishment of fence, building, or other future improvement lines.

## NOTE:

- 1) Bearings shown are Grid Bearings of the Colorado State Plane Coordinate System, North Zone, North American Datum 1983/2007. The lineal dimensions as contained herein are based upon the "U.S. Survey Foot."
- 2) Ground elevations are based on an observed GPS elevation (NAVD 1988 DATUM).
- 3) NEAREST EXISTING WELL: SAUER 33-2, 687'
- 4) IMPROVEMENTS: See LOCATION DRAWING for all visible improvements within 400' of disturbed area.
- 5) SURFACE USE: CROPLAND
- 6) INSTRUMENT OPERATOR: WYATT HALL

## SURFACE LOCATION

LAT: 40.34913°N  
LONG: 104.67216°W  
PDOP: 1.6  
ELEV: 4671'  
1/4, 1/4: SE1/4SW1/4  
NEAREST PROPERTY LINE: 238' SOUTH

## BOTTOM HOLE

LAT: 40.36159°N  
LONG: 104.67312°W

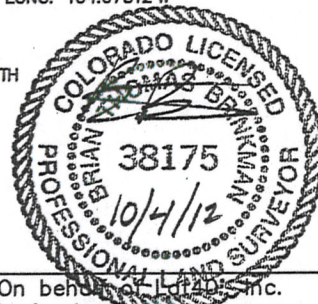
## NOTE

According to Colorado law, you must commence any legal action based upon any defect in this W.L.C. within three years after you discover such defect. In no event, may any action based upon any defect in this survey be commenced more than ten years after the date of the certificate shown hereon. (13-80-105 C.R.S.)

## LEGEND

- = ALIQUOT MONUMENT AS DESCRIBED  
○ = CALCULATED POSITION

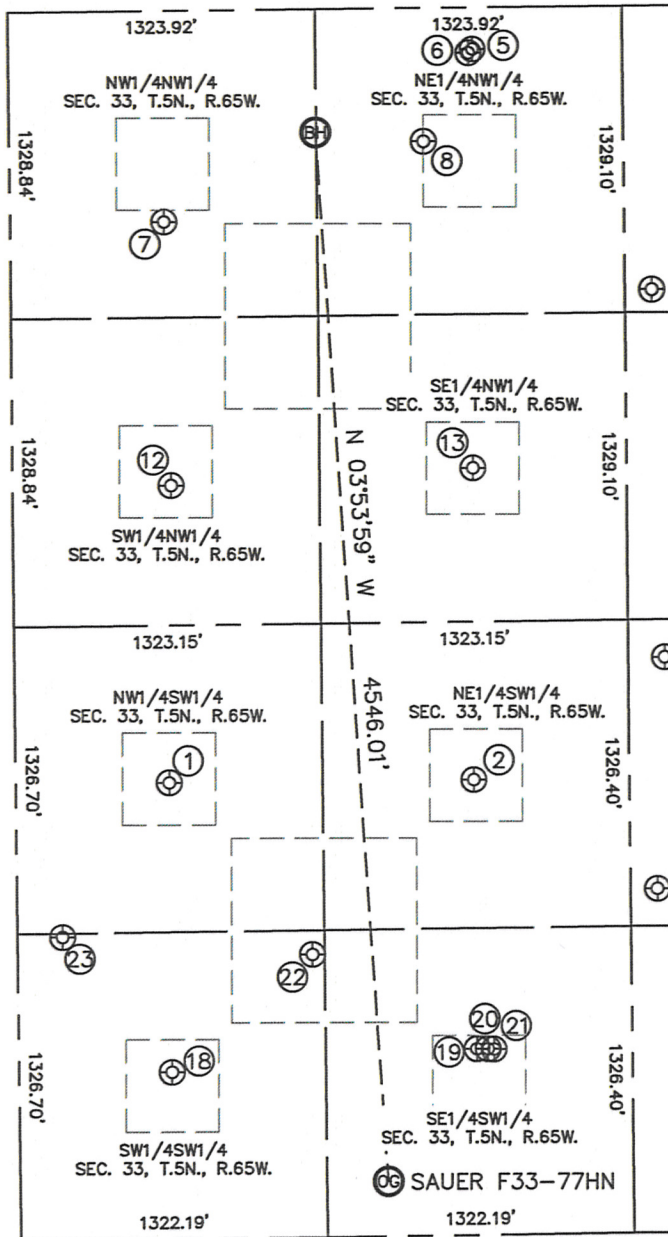
Brian T. Brinkman—On behalf of Lat40°, Inc.  
Colorado Licensed Professional Land Surveyor No. 38175  
DATE: 9/27/2012  
PROJECT#: 2011334



# SITE SKETCH

SAUER F33-77HN

SECTION: 33  
TOWNSHIP: 5N  
RANGE: 65W



①  
KEISER 2  
NW1/4SW1/4  
1974' FSL  
661' FWL  
LAT-40.35389°N  
LONG-104.67548°W  
PDOP: 1.1  
ELEV: 4664'

②  
KEISER 1  
NE1/4SW1/4  
1970' FSL  
1974' FWL  
LAT-40.35389°N  
LONG-104.67078°W  
PDOP: 1.5  
ELEV: 4662'

⑤  
ALLES F33-29D  
NE1/4NW1/4  
182' FNL  
2000' FWL  
LAT-40.36256°N  
LONG-104.67068°W  
PDOP: 1.5  
ELEV: 4664'

⑥  
ALLES F33-28D  
NE1/4NW1/4  
198' FNL  
1982' FWL  
LAT-40.36251°N  
LONG-104.67075°W  
PDOP: 1.3  
ELEV: 4664'

⑦  
J ALLES 1  
NW1/4NW1/4  
915' FNL  
663' FWL  
LAT-40.36054°N  
LONG-104.67548°W  
PDOP: 1.5  
ELEV: 4653'

⑧  
ALLES 33-3  
NE1/4NW1/4  
578' FNL  
1786' FWL  
LAT-40.36147°N  
LONG-104.67145°W  
PDOP: 1.6  
ELEV: 4664'

⑫  
ALLES 33-4  
SW1/4NW1/4  
2054' FNL  
682' FWL  
LAT-40.35741°N  
LONG-104.67541°W  
PDOP: 1.5  
ELEV: 4665'

⑬  
ALLES 3  
SE1/4NW1/4  
1993' FNL  
1984' FWL  
LAT-40.35759°N  
LONG-104.67074°W  
PDOP: 1.9  
ELEV: 4663'

⑮  
SAUER 1  
SW1/4SW1/4  
721' FSL  
659' FWL  
LAT-40.35045°N  
LONG-104.67549°W  
PDOP: 2.2  
ELEV: 4669'

⑰  
SAUER 33-2  
SE1/4SW1/4  
805' FSL  
1973' FWL  
LAT-40.35069°N  
LONG-104.67078°W  
PDOP: 2.9  
ELEV: 4662'

⑳  
SAUER G04-29D  
SE1/4SW1/4  
804' FSL  
2022' FWL  
LAT-40.35069°N  
LONG-104.67060°W  
PDOP: 2.7  
ELEV: 4662'

㉑  
SAUER G04-28D  
SE1/4SW1/4  
803' FSL  
2047' FWL  
LAT-40.35068°N  
LONG-104.67051°W  
PDOP: 1.9  
ELEV: 4662'

㉒  
SAUER F33-25  
SW1/4SW1/4  
1221' FSL  
1269' FWL  
LAT-40.35183°N  
LONG-104.67330°W  
PDOP: 1.2  
ELEV: 4662'

㉓  
SAUER F33-33  
SW1/4SW1/4  
1311' FSL  
194' FWL  
LAT-40.35207°N  
LONG-104.67716°W  
PDOP: 1.3  
ELEV: 4665'

