

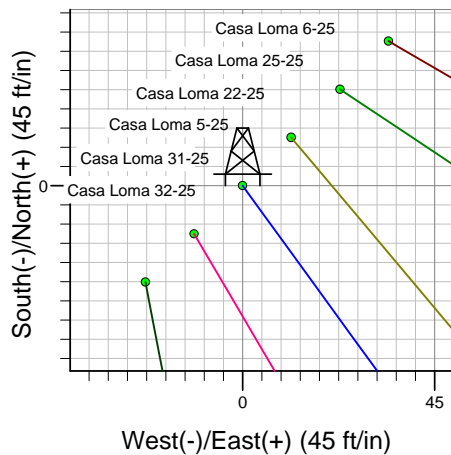
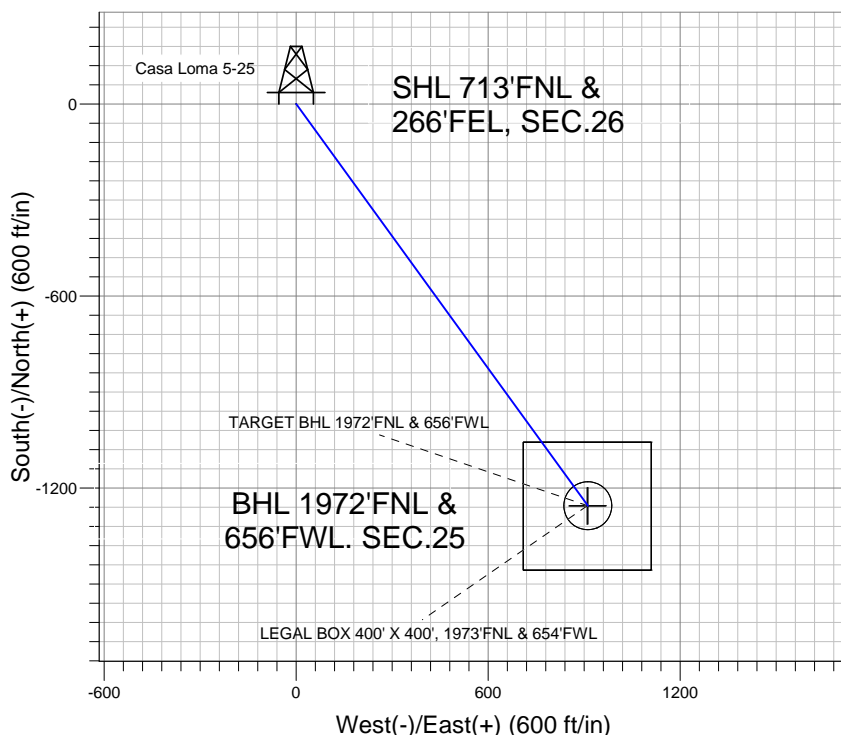
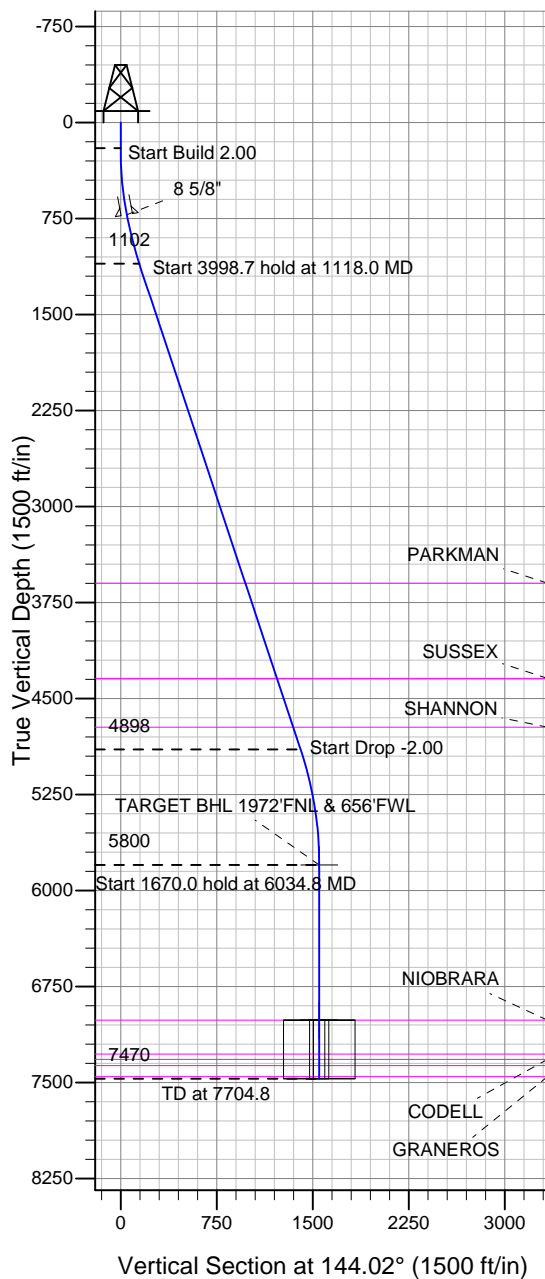
Well Name: Casa Loma 5-25

Surface Location: Casa Loma 8 Pad Sec.26-T7N-R67W
North American Datum 1983 , US State Plane 1983 , Colorado Northern Zone

Ground Elevation: 4952.0

+N/-S	+E/-W	Northing	Easting	Latitude	Longitude	Slot
0.0	0.0	1444013.86	3180114.09	40.550411	-104.851851	
Original Well Elev WELL @ 4968.0ft (Original Well Elev)						

BAYSWATER EXPLORATION & PRODUCTION



Casa Loma 8 Pad Sec.26-T7N-R67W
Casa Loma 5-25
Plan #1 (7-10-12)
11:40, July 23 2012



Azimuths to True North
Magnetic North: 8.78°
Magnetic Field
Strength: 53086.9snT
Dip Angle: 67.12°
Date: 7/10/2012
Model: IGRF2010

WELLBORE TARGET DETAILS (LAT/LONG)

Name	TVD	+N/-S	+E/-W	Latitude	Longitude	Shape
TARGET BHL 1972'FNL & 656'FWL	5800.0	-1255.4	911.3	40.546965	-104.848572	Point
LEGAL BOX 400' X 400', 1973'FNL & 654'FWL	7013.0	-1256.4	909.3	40.546962	-104.848579	Rectangle (Sides: L400.0 W400.0)
TARGET CIRCLE 1972'FNL & 656'FWL	7013.0	-1255.4	911.3	40.546965	-104.848572	Circle (Radius: 75.0)

SECTION DETAILS

Sec	MD	Inc	Azi	TVD	+N/-S	+E/-W	DLeg	TFace	VSec	Target
1	0.0	0.00	0.00	0.0	0.0	0.0	0.00	0.00	0.0	
2	200.0	0.00	0.00	200.0	0.0	0.0	0.00	0.00	0.0	
3	1118.0	18.36	144.02	1102.4	-118.0	85.7	2.00	144.02	145.8	
4	5116.8	18.36	144.02	4897.6	-1137.4	825.6	0.00	0.00	1405.5	
5	6034.8	0.00	0.00	5800.0	-1255.4	911.3	2.00	180.00	1551.3	TARGET BHL 1972'FNL & 656'FWL
6	7704.8	0.00	0.00	7470.0	-1255.4	911.3	0.00	0.00	1551.3	



BAYSWATER EXPLORATION & PRODUCTION

SEC.26-T7N-R67W

Casa Loma 8 Pad Sec.26-T7N-R67W

Casa Loma 5-25

Wellbore #1

Plan: Plan #1 (7-10-12)

Standard Planning Report

23 July, 2012

Database:	Landmark	Local Co-ordinate Reference:	Well Casa Loma 5-25
Company:	BAYSWATER EXPLORATION & PRODUCTION	TVD Reference:	WELL @ 4968.0ft (Original Well Elev)
Project:	SEC.26-T7N-R67W	MD Reference:	WELL @ 4968.0ft (Original Well Elev)
Site:	Casa Loma 8 Pad Sec.26-T7N-R67W	North Reference:	True
Well:	Casa Loma 5-25	Survey Calculation Method:	Minimum Curvature
Wellbore:	Wellbore #1		
Design:	Plan #1 (7-10-12)		

Project	SEC.26-T7N-R67W, Weld County, CO		
Map System:	US State Plane 1983	System Datum:	Mean Sea Level
Geo Datum:	North American Datum 1983		Using Well Reference Point
Map Zone:	Colorado Northern Zone		Using geodetic scale factor

Site		Casa Loma 8 Pad Sec.26-T7N-R67W			
Site Position:		Northing:	1,444,013.87 ft	Latitude:	40.550411
From:	Lat/Long	Easting:	3,180,114.09ft	Longitude:	-104.851851
Position Uncertainty:	0.0 ft	Slot Radius:	"	Grid Convergence:	0.42 °

Well	Casa Loma 5-25					
Well Position	+N-S	0.0 ft	Northing:	1,444,013.86 ft	Latitude:	40.550411
	+E-W	0.0 ft	Easting:	3,180,114.09 ft	Longitude:	-104.851851
Position Uncertainty		0.0 ft	Wellhead Elevation:	ft	Ground Level:	4,952.0 ft

Wellbore	Wellbore #1				
Magnetics	Model Name	Sample Date	Declination (°)	Dip Angle (°)	Field Strength (nT)
	IGRF2010	7/10/2012	8.78	67.12	53,087

Design	Plan #1 (7-10-12)			
Audit Notes:				
Version:	Phase:	PROTOTYPE	Tie On Depth:	0.0
Vertical Section:	Depth From (TVD) (ft)	+N/-S (ft)	+E/-W (ft)	Direction (°)
	0.0	0.0	0.0	144.02

Plan Sections										
Measured Depth (ft)	Inclination (°)	Azimuth (°)	Vertical Depth (ft)	+N/-S (ft)	+E/-W (ft)	Dogleg Rate (°/100ft)	Build Rate (°/100ft)	Turn Rate (°/100ft)	TFO (°)	Target
0.0	0.00	0.00	0.0	0.0	0.0	0.00	0.00	0.00	0.00	
200.0	0.00	0.00	200.0	0.0	0.0	0.00	0.00	0.00	0.00	
1,118.0	18.36	144.02	1,102.4	-118.0	85.7	2.00	2.00	0.00	144.02	
5,116.8	18.36	144.02	4,897.6	-1,137.4	825.6	0.00	0.00	0.00	0.00	
6,034.8	0.00	0.00	5,800.0	-1,255.4	911.3	2.00	-2.00	0.00	180.00	TARGET BHL 1972
7,704.8	0.00	0.00	7,470.0	-1,255.4	911.3	0.00	0.00	0.00	0.00	

Database:	Landmark	Local Co-ordinate Reference:	Well Casa Loma 5-25
Company:	BAYSWATER EXPLORATION & PRODUCTION	TVD Reference:	WELL @ 4968.0ft (Original Well Elev)
Project:	SEC.26-T7N-R67W	MD Reference:	WELL @ 4968.0ft (Original Well Elev)
Site:	Casa Loma 8 Pad Sec.26-T7N-R67W	North Reference:	True
Well:	Casa Loma 5-25	Survey Calculation Method:	Minimum Curvature
Wellbore:	Wellbore #1		
Design:	Plan #1 (7-10-12)		

Planned Survey									
Measured Depth (ft)	Inclination (°)	Azimuth (°)	Vertical Depth (ft)	+N/-S (ft)	+E/-W (ft)	Vertical Section (ft)	Dogleg Rate (°/100ft)	Build Rate (°/100ft)	Turn Rate (°/100ft)
0.0	0.00	0.00	0.0	0.0	0.0	0.0	0.00	0.00	0.00
40.0	0.00	0.00	40.0	0.0	0.0	0.0	0.00	0.00	0.00
80.0	0.00	0.00	80.0	0.0	0.0	0.0	0.00	0.00	0.00
120.0	0.00	0.00	120.0	0.0	0.0	0.0	0.00	0.00	0.00
160.0	0.00	0.00	160.0	0.0	0.0	0.0	0.00	0.00	0.00
200.0	0.00	0.00	200.0	0.0	0.0	0.0	0.00	0.00	0.00
240.0	0.80	144.02	240.0	-0.2	0.2	0.3	2.00	2.00	0.00
280.0	1.60	144.02	280.0	-0.9	0.7	1.1	2.00	2.00	0.00
320.0	2.40	144.02	320.0	-2.0	1.5	2.5	2.00	2.00	0.00
360.0	3.20	144.02	359.9	-3.6	2.6	4.5	2.00	2.00	0.00
400.0	4.00	144.02	399.8	-5.6	4.1	7.0	2.00	2.00	0.00
440.0	4.80	144.02	439.7	-8.1	5.9	10.0	2.00	2.00	0.00
480.0	5.60	144.02	479.6	-11.1	8.0	13.7	2.00	2.00	0.00
520.0	6.40	144.02	519.3	-14.4	10.5	17.9	2.00	2.00	0.00
560.0	7.20	144.02	559.1	-18.3	13.3	22.6	2.00	2.00	0.00
600.0	8.00	144.02	598.7	-22.6	16.4	27.9	2.00	2.00	0.00
640.0	8.80	144.02	638.3	-27.3	19.8	33.7	2.00	2.00	0.00
680.0	9.60	144.02	677.8	-32.5	23.6	40.1	2.00	2.00	0.00
720.0	10.40	144.02	717.1	-38.1	27.6	47.1	2.00	2.00	0.00
722.9	10.46	144.02	720.0	-38.5	28.0	47.6	2.00	2.00	0.00
8 5/8"									
760.0	11.20	144.02	756.4	-44.2	32.0	54.6	2.00	2.00	0.00
800.0	12.00	144.02	795.6	-50.7	36.8	62.6	2.00	2.00	0.00
840.0	12.80	144.02	834.7	-57.6	41.8	71.2	2.00	2.00	0.00
880.0	13.60	144.02	873.6	-65.0	47.2	80.3	2.00	2.00	0.00
920.0	14.40	144.02	912.4	-72.8	52.9	90.0	2.00	2.00	0.00
960.0	15.20	144.02	951.1	-81.1	58.9	100.2	2.00	2.00	0.00
1,000.0	16.00	144.02	989.6	-89.8	65.2	111.0	2.00	2.00	0.00
1,040.0	16.80	144.02	1,028.0	-99.0	71.8	122.3	2.00	2.00	0.00
1,080.0	17.60	144.02	1,066.2	-108.5	78.8	134.1	2.00	2.00	0.00
1,118.0	18.36	144.02	1,102.4	-118.0	85.7	145.8	2.00	2.00	0.00
1,120.0	18.36	144.02	1,104.3	-118.5	86.0	146.5	0.00	0.00	0.00
1,160.0	18.36	144.02	1,142.2	-128.7	93.4	159.1	0.00	0.00	0.00
1,200.0	18.36	144.02	1,180.2	-138.9	100.8	171.7	0.00	0.00	0.00
1,240.0	18.36	144.02	1,218.2	-149.1	108.2	184.3	0.00	0.00	0.00
1,280.0	18.36	144.02	1,256.1	-159.3	115.6	196.9	0.00	0.00	0.00
1,320.0	18.36	144.02	1,294.1	-169.5	123.0	209.5	0.00	0.00	0.00
1,360.0	18.36	144.02	1,332.1	-179.7	130.4	222.1	0.00	0.00	0.00
1,400.0	18.36	144.02	1,370.0	-189.9	137.8	234.7	0.00	0.00	0.00
1,440.0	18.36	144.02	1,408.0	-200.1	145.2	247.3	0.00	0.00	0.00
1,480.0	18.36	144.02	1,445.9	-210.3	152.6	259.9	0.00	0.00	0.00
1,520.0	18.36	144.02	1,483.9	-220.5	160.1	272.5	0.00	0.00	0.00
1,560.0	18.36	144.02	1,521.9	-230.7	167.5	285.1	0.00	0.00	0.00
1,600.0	18.36	144.02	1,559.8	-240.9	174.9	297.7	0.00	0.00	0.00
1,640.0	18.36	144.02	1,597.8	-251.1	182.3	310.3	0.00	0.00	0.00
1,680.0	18.36	144.02	1,635.8	-261.3	189.7	322.9	0.00	0.00	0.00
1,720.0	18.36	144.02	1,673.7	-271.5	197.1	335.5	0.00	0.00	0.00
1,760.0	18.36	144.02	1,711.7	-281.7	204.5	348.1	0.00	0.00	0.00
1,800.0	18.36	144.02	1,749.7	-291.9	211.9	360.7	0.00	0.00	0.00
1,840.0	18.36	144.02	1,787.6	-302.1	219.3	373.3	0.00	0.00	0.00
1,880.0	18.36	144.02	1,825.6	-312.3	226.7	385.9	0.00	0.00	0.00
1,920.0	18.36	144.02	1,863.5	-322.5	234.1	398.5	0.00	0.00	0.00
1,960.0	18.36	144.02	1,901.5	-332.7	241.5	411.1	0.00	0.00	0.00

Database:	Landmark	Local Co-ordinate Reference:	Well Casa Loma 5-25
Company:	BAYSWATER EXPLORATION & PRODUCTION	TVD Reference:	WELL @ 4968.0ft (Original Well Elev)
Project:	SEC.26-T7N-R67W	MD Reference:	WELL @ 4968.0ft (Original Well Elev)
Site:	Casa Loma 8 Pad Sec.26-T7N-R67W	North Reference:	True
Well:	Casa Loma 5-25	Survey Calculation Method:	Minimum Curvature
Wellbore:	Wellbore #1		
Design:	Plan #1 (7-10-12)		

Planned Survey									
Measured Depth (ft)	Inclination (°)	Azimuth (°)	Vertical Depth (ft)	+N/-S (ft)	+E/-W (ft)	Vertical Section (ft)	Dogleg Rate (°/100ft)	Build Rate (°/100ft)	Turn Rate (°/100ft)
2,000.0	18.36	144.02	1,939.5	-342.9	248.9	423.7	0.00	0.00	0.00
2,040.0	18.36	144.02	1,977.4	-353.1	256.3	436.3	0.00	0.00	0.00
2,080.0	18.36	144.02	2,015.4	-363.3	263.7	448.9	0.00	0.00	0.00
2,120.0	18.36	144.02	2,053.4	-373.4	271.1	461.5	0.00	0.00	0.00
2,160.0	18.36	144.02	2,091.3	-383.6	278.5	474.1	0.00	0.00	0.00
2,200.0	18.36	144.02	2,129.3	-393.8	285.9	486.7	0.00	0.00	0.00
2,240.0	18.36	144.02	2,167.3	-404.0	293.3	499.3	0.00	0.00	0.00
2,280.0	18.36	144.02	2,205.2	-414.2	300.7	511.9	0.00	0.00	0.00
2,320.0	18.36	144.02	2,243.2	-424.4	308.1	524.5	0.00	0.00	0.00
2,360.0	18.36	144.02	2,281.1	-434.6	315.5	537.1	0.00	0.00	0.00
2,400.0	18.36	144.02	2,319.1	-444.8	322.9	549.7	0.00	0.00	0.00
2,440.0	18.36	144.02	2,357.1	-455.0	330.3	562.3	0.00	0.00	0.00
2,480.0	18.36	144.02	2,395.0	-465.2	337.7	574.9	0.00	0.00	0.00
2,520.0	18.36	144.02	2,433.0	-475.4	345.1	587.5	0.00	0.00	0.00
2,560.0	18.36	144.02	2,471.0	-485.6	352.5	600.1	0.00	0.00	0.00
2,600.0	18.36	144.02	2,508.9	-495.8	359.9	612.7	0.00	0.00	0.00
2,640.0	18.36	144.02	2,546.9	-506.0	367.3	625.3	0.00	0.00	0.00
2,680.0	18.36	144.02	2,584.9	-516.2	374.7	637.9	0.00	0.00	0.00
2,720.0	18.36	144.02	2,622.8	-526.4	382.1	650.5	0.00	0.00	0.00
2,760.0	18.36	144.02	2,660.8	-536.6	389.5	663.1	0.00	0.00	0.00
2,800.0	18.36	144.02	2,698.7	-546.8	396.9	675.7	0.00	0.00	0.00
2,840.0	18.36	144.02	2,736.7	-557.0	404.3	688.3	0.00	0.00	0.00
2,880.0	18.36	144.02	2,774.7	-567.2	411.7	700.9	0.00	0.00	0.00
2,920.0	18.36	144.02	2,812.6	-577.4	419.1	713.5	0.00	0.00	0.00
2,960.0	18.36	144.02	2,850.6	-587.6	426.5	726.1	0.00	0.00	0.00
3,000.0	18.36	144.02	2,888.6	-597.8	433.9	738.7	0.00	0.00	0.00
3,040.0	18.36	144.02	2,926.5	-608.0	441.3	751.3	0.00	0.00	0.00
3,080.0	18.36	144.02	2,964.5	-618.2	448.7	763.9	0.00	0.00	0.00
3,120.0	18.36	144.02	3,002.5	-628.4	456.1	776.5	0.00	0.00	0.00
3,160.0	18.36	144.02	3,040.4	-638.6	463.5	789.1	0.00	0.00	0.00
3,200.0	18.36	144.02	3,078.4	-648.8	470.9	801.7	0.00	0.00	0.00
3,240.0	18.36	144.02	3,116.3	-659.0	478.3	814.3	0.00	0.00	0.00
3,280.0	18.36	144.02	3,154.3	-669.2	485.7	826.9	0.00	0.00	0.00
3,320.0	18.36	144.02	3,192.3	-679.4	493.1	839.5	0.00	0.00	0.00
3,360.0	18.36	144.02	3,230.2	-689.6	500.5	852.1	0.00	0.00	0.00
3,400.0	18.36	144.02	3,268.2	-699.7	507.9	864.7	0.00	0.00	0.00
3,440.0	18.36	144.02	3,306.2	-709.9	515.3	877.3	0.00	0.00	0.00
3,480.0	18.36	144.02	3,344.1	-720.1	522.7	889.9	0.00	0.00	0.00
3,520.0	18.36	144.02	3,382.1	-730.3	530.1	902.5	0.00	0.00	0.00
3,560.0	18.36	144.02	3,420.1	-740.5	537.5	915.1	0.00	0.00	0.00
3,600.0	18.36	144.02	3,458.0	-750.7	544.9	927.7	0.00	0.00	0.00
3,640.0	18.36	144.02	3,496.0	-760.9	552.3	940.3	0.00	0.00	0.00
3,680.0	18.36	144.02	3,533.9	-771.1	559.7	952.9	0.00	0.00	0.00
3,720.0	18.36	144.02	3,571.9	-781.3	567.1	965.5	0.00	0.00	0.00
3,747.5	18.36	144.02	3,598.0	-788.3	572.2	974.1	0.00	0.00	0.00
PARKMAN									
3,760.0	18.36	144.02	3,609.9	-791.5	574.5	978.1	0.00	0.00	0.00
3,800.0	18.36	144.02	3,647.8	-801.7	581.9	990.7	0.00	0.00	0.00
3,840.0	18.36	144.02	3,685.8	-811.9	589.4	1,003.3	0.00	0.00	0.00
3,880.0	18.36	144.02	3,723.8	-822.1	596.8	1,015.9	0.00	0.00	0.00
3,920.0	18.36	144.02	3,761.7	-832.3	604.2	1,028.5	0.00	0.00	0.00
3,960.0	18.36	144.02	3,799.7	-842.5	611.6	1,041.1	0.00	0.00	0.00
4,000.0	18.36	144.02	3,837.7	-852.7	619.0	1,053.7	0.00	0.00	0.00

Database:	Landmark	Local Co-ordinate Reference:	Well Casa Loma 5-25
Company:	BAYSWATER EXPLORATION & PRODUCTION	TVD Reference:	WELL @ 4968.0ft (Original Well Elev)
Project:	SEC.26-T7N-R67W	MD Reference:	WELL @ 4968.0ft (Original Well Elev)
Site:	Casa Loma 8 Pad Sec.26-T7N-R67W	North Reference:	True
Well:	Casa Loma 5-25	Survey Calculation Method:	Minimum Curvature
Wellbore:	Wellbore #1		
Design:	Plan #1 (7-10-12)		

Planned Survey									
Measured Depth (ft)	Inclination (°)	Azimuth (°)	Vertical Depth (ft)	+N/-S (ft)	+E/-W (ft)	Vertical Section (ft)	Dogleg Rate (°/100ft)	Build Rate (°/100ft)	Turn Rate (°/100ft)
4,040.0	18.36	144.02	3,875.6	-862.9	626.4	1,066.3	0.00	0.00	0.00
4,080.0	18.36	144.02	3,913.6	-873.1	633.8	1,078.9	0.00	0.00	0.00
4,120.0	18.36	144.02	3,951.5	-883.3	641.2	1,091.5	0.00	0.00	0.00
4,160.0	18.36	144.02	3,989.5	-893.5	648.6	1,104.1	0.00	0.00	0.00
4,200.0	18.36	144.02	4,027.5	-903.7	656.0	1,116.7	0.00	0.00	0.00
4,240.0	18.36	144.02	4,065.4	-913.9	663.4	1,129.3	0.00	0.00	0.00
4,280.0	18.36	144.02	4,103.4	-924.1	670.8	1,141.9	0.00	0.00	0.00
4,320.0	18.36	144.02	4,141.4	-934.3	678.2	1,154.5	0.00	0.00	0.00
4,360.0	18.36	144.02	4,179.3	-944.5	685.6	1,167.1	0.00	0.00	0.00
4,400.0	18.36	144.02	4,217.3	-954.7	693.0	1,179.7	0.00	0.00	0.00
4,440.0	18.36	144.02	4,255.3	-964.9	700.4	1,192.3	0.00	0.00	0.00
4,480.0	18.36	144.02	4,293.2	-975.1	707.8	1,204.9	0.00	0.00	0.00
4,520.0	18.36	144.02	4,331.2	-985.3	715.2	1,217.5	0.00	0.00	0.00
4,532.5	18.36	144.02	4,343.0	-988.4	717.5	1,221.4	0.00	0.00	0.00
SUSSEX									
4,560.0	18.36	144.02	4,369.1	-995.5	722.6	1,230.1	0.00	0.00	0.00
4,600.0	18.36	144.02	4,407.1	-1,005.7	730.0	1,242.7	0.00	0.00	0.00
4,640.0	18.36	144.02	4,445.1	-1,015.9	737.4	1,255.3	0.00	0.00	0.00
4,680.0	18.36	144.02	4,483.0	-1,026.0	744.8	1,267.9	0.00	0.00	0.00
4,720.0	18.36	144.02	4,521.0	-1,036.2	752.2	1,280.5	0.00	0.00	0.00
4,760.0	18.36	144.02	4,559.0	-1,046.4	759.6	1,293.1	0.00	0.00	0.00
4,800.0	18.36	144.02	4,596.9	-1,056.6	767.0	1,305.7	0.00	0.00	0.00
4,840.0	18.36	144.02	4,634.9	-1,066.8	774.4	1,318.3	0.00	0.00	0.00
4,880.0	18.36	144.02	4,672.9	-1,077.0	781.8	1,330.9	0.00	0.00	0.00
4,920.0	18.36	144.02	4,710.8	-1,087.2	789.2	1,343.5	0.00	0.00	0.00
4,932.8	18.36	144.02	4,723.0	-1,090.5	791.6	1,347.5	0.00	0.00	0.00
SHANNON									
4,960.0	18.36	144.02	4,748.8	-1,097.4	796.6	1,356.1	0.00	0.00	0.00
5,000.0	18.36	144.02	4,786.7	-1,107.6	804.0	1,368.7	0.00	0.00	0.00
5,040.0	18.36	144.02	4,824.7	-1,117.8	811.4	1,381.3	0.00	0.00	0.00
5,080.0	18.36	144.02	4,862.7	-1,128.0	818.8	1,393.9	0.00	0.00	0.00
5,116.8	18.36	144.02	4,897.6	-1,137.4	825.6	1,405.5	0.00	0.00	0.00
5,120.0	18.30	144.02	4,900.6	-1,138.2	826.2	1,406.5	2.00	-2.00	0.00
5,160.0	17.50	144.02	4,938.7	-1,148.2	833.4	1,418.8	2.00	-2.00	0.00
5,200.0	16.70	144.02	4,976.9	-1,157.7	840.3	1,430.5	2.00	-2.00	0.00
5,240.0	15.90	144.02	5,015.3	-1,166.8	846.9	1,441.7	2.00	-2.00	0.00
5,280.0	15.10	144.02	5,053.9	-1,175.4	853.2	1,452.4	2.00	-2.00	0.00
5,320.0	14.30	144.02	5,092.6	-1,183.6	859.2	1,462.6	2.00	-2.00	0.00
5,360.0	13.50	144.02	5,131.4	-1,191.4	864.8	1,472.2	2.00	-2.00	0.00
5,400.0	12.70	144.02	5,170.3	-1,198.7	870.1	1,481.2	2.00	-2.00	0.00
5,440.0	11.90	144.02	5,209.4	-1,205.6	875.1	1,489.8	2.00	-2.00	0.00
5,480.0	11.10	144.02	5,248.6	-1,212.1	879.8	1,497.7	2.00	-2.00	0.00
5,520.0	10.30	144.02	5,287.9	-1,218.1	884.2	1,505.2	2.00	-2.00	0.00
5,560.0	9.50	144.02	5,327.3	-1,223.6	888.2	1,512.0	2.00	-2.00	0.00
5,600.0	8.70	144.02	5,366.8	-1,228.8	891.9	1,518.4	2.00	-2.00	0.00
5,640.0	7.90	144.02	5,406.4	-1,233.4	895.3	1,524.1	2.00	-2.00	0.00
5,680.0	7.10	144.02	5,446.1	-1,237.7	898.4	1,529.4	2.00	-2.00	0.00
5,720.0	6.30	144.02	5,485.8	-1,241.4	901.1	1,534.0	2.00	-2.00	0.00
5,760.0	5.50	144.02	5,525.6	-1,244.8	903.5	1,538.1	2.00	-2.00	0.00
5,800.0	4.70	144.02	5,565.4	-1,247.6	905.6	1,541.7	2.00	-2.00	0.00
5,840.0	3.90	144.02	5,605.3	-1,250.1	907.4	1,544.7	2.00	-2.00	0.00
5,880.0	3.10	144.02	5,645.2	-1,252.0	908.8	1,547.1	2.00	-2.00	0.00
5,920.0	2.30	144.02	5,685.2	-1,253.6	909.9	1,549.0	2.00	-2.00	0.00

Database:	Landmark	Local Co-ordinate Reference:	Well Casa Loma 5-25
Company:	BAYSWATER EXPLORATION & PRODUCTION	TVD Reference:	WELL @ 4968.0ft (Original Well Elev)
Project:	SEC.26-T7N-R67W	MD Reference:	WELL @ 4968.0ft (Original Well Elev)
Site:	Casa Loma 8 Pad Sec.26-T7N-R67W	North Reference:	True
Well:	Casa Loma 5-25	Survey Calculation Method:	Minimum Curvature
Wellbore:	Wellbore #1		
Design:	Plan #1 (7-10-12)		

Planned Survey

Measured Depth (ft)	Inclination (°)	Azimuth (°)	Vertical Depth (ft)	+N/-S (ft)	+E/-W (ft)	Vertical Section (ft)	Dogleg Rate (°/100ft)	Build Rate (°/100ft)	Turn Rate (°/100ft)
5,960.0	1.50	144.02	5,725.2	-1,254.6	910.7	1,550.3	2.00	-2.00	0.00
6,000.0	0.70	144.02	5,765.2	-1,255.3	911.2	1,551.1	2.00	-2.00	0.00
6,034.8	0.00	0.00	5,800.0	-1,255.4	911.3	1,551.3	2.00	-2.00	0.00
TARGET BHL 1972'FNL & 656'FWL									
6,040.0	0.00	0.00	5,805.2	-1,255.4	911.3	1,551.3	0.00	0.00	0.00
6,080.0	0.00	0.00	5,845.2	-1,255.4	911.3	1,551.3	0.00	0.00	0.00
6,120.0	0.00	0.00	5,885.2	-1,255.4	911.3	1,551.3	0.00	0.00	0.00
6,160.0	0.00	0.00	5,925.2	-1,255.4	911.3	1,551.3	0.00	0.00	0.00
6,200.0	0.00	0.00	5,965.2	-1,255.4	911.3	1,551.3	0.00	0.00	0.00
6,240.0	0.00	0.00	6,005.2	-1,255.4	911.3	1,551.3	0.00	0.00	0.00
6,280.0	0.00	0.00	6,045.2	-1,255.4	911.3	1,551.3	0.00	0.00	0.00
6,320.0	0.00	0.00	6,085.2	-1,255.4	911.3	1,551.3	0.00	0.00	0.00
6,360.0	0.00	0.00	6,125.2	-1,255.4	911.3	1,551.3	0.00	0.00	0.00
6,400.0	0.00	0.00	6,165.2	-1,255.4	911.3	1,551.3	0.00	0.00	0.00
6,440.0	0.00	0.00	6,205.2	-1,255.4	911.3	1,551.3	0.00	0.00	0.00
6,480.0	0.00	0.00	6,245.2	-1,255.4	911.3	1,551.3	0.00	0.00	0.00
6,520.0	0.00	0.00	6,285.2	-1,255.4	911.3	1,551.3	0.00	0.00	0.00
6,560.0	0.00	0.00	6,325.2	-1,255.4	911.3	1,551.3	0.00	0.00	0.00
6,600.0	0.00	0.00	6,365.2	-1,255.4	911.3	1,551.3	0.00	0.00	0.00
6,640.0	0.00	0.00	6,405.2	-1,255.4	911.3	1,551.3	0.00	0.00	0.00
6,680.0	0.00	0.00	6,445.2	-1,255.4	911.3	1,551.3	0.00	0.00	0.00
6,720.0	0.00	0.00	6,485.2	-1,255.4	911.3	1,551.3	0.00	0.00	0.00
6,760.0	0.00	0.00	6,525.2	-1,255.4	911.3	1,551.3	0.00	0.00	0.00
6,800.0	0.00	0.00	6,565.2	-1,255.4	911.3	1,551.3	0.00	0.00	0.00
6,840.0	0.00	0.00	6,605.2	-1,255.4	911.3	1,551.3	0.00	0.00	0.00
6,880.0	0.00	0.00	6,645.2	-1,255.4	911.3	1,551.3	0.00	0.00	0.00
6,920.0	0.00	0.00	6,685.2	-1,255.4	911.3	1,551.3	0.00	0.00	0.00
6,960.0	0.00	0.00	6,725.2	-1,255.4	911.3	1,551.3	0.00	0.00	0.00
7,000.0	0.00	0.00	6,765.2	-1,255.4	911.3	1,551.3	0.00	0.00	0.00
7,040.0	0.00	0.00	6,805.2	-1,255.4	911.3	1,551.3	0.00	0.00	0.00
7,080.0	0.00	0.00	6,845.2	-1,255.4	911.3	1,551.3	0.00	0.00	0.00
7,120.0	0.00	0.00	6,885.2	-1,255.4	911.3	1,551.3	0.00	0.00	0.00
7,160.0	0.00	0.00	6,925.2	-1,255.4	911.3	1,551.3	0.00	0.00	0.00
7,200.0	0.00	0.00	6,965.2	-1,255.4	911.3	1,551.3	0.00	0.00	0.00
7,240.0	0.00	0.00	7,005.2	-1,255.4	911.3	1,551.3	0.00	0.00	0.00
7,247.8	0.00	0.00	7,013.0	-1,255.4	911.3	1,551.3	0.00	0.00	0.00
NIOBRARA - TARGET CIRCLE 1972'FNL & 656'FWL - LEGAL BOX 400' X 400', 1973'FNL & 654'FWL									
7,280.0	0.00	0.00	7,045.2	-1,255.4	911.3	1,551.3	0.00	0.00	0.00
7,320.0	0.00	0.00	7,085.2	-1,255.4	911.3	1,551.3	0.00	0.00	0.00
7,360.0	0.00	0.00	7,125.2	-1,255.4	911.3	1,551.3	0.00	0.00	0.00
7,400.0	0.00	0.00	7,165.2	-1,255.4	911.3	1,551.3	0.00	0.00	0.00
7,440.0	0.00	0.00	7,205.2	-1,255.4	911.3	1,551.3	0.00	0.00	0.00
7,480.0	0.00	0.00	7,245.2	-1,255.4	911.3	1,551.3	0.00	0.00	0.00
7,512.8	0.00	0.00	7,278.0	-1,255.4	911.3	1,551.3	0.00	0.00	0.00
FORT HAYS									
7,520.0	0.00	0.00	7,285.2	-1,255.4	911.3	1,551.3	0.00	0.00	0.00
7,552.8	0.00	0.00	7,318.0	-1,255.4	911.3	1,551.3	0.00	0.00	0.00
CODELL									
7,560.0	0.00	0.00	7,325.2	-1,255.4	911.3	1,551.3	0.00	0.00	0.00
7,600.0	0.00	0.00	7,365.2	-1,255.4	911.3	1,551.3	0.00	0.00	0.00
7,602.8	0.00	0.00	7,368.0	-1,255.4	911.3	1,551.3	0.00	0.00	0.00
GREENHORN									

Database:	Landmark	Local Co-ordinate Reference:	Well Casa Loma 5-25
Company:	BAYSWATER EXPLORATION & PRODUCTION	TVD Reference:	WELL @ 4968.0ft (Original Well Elev)
Project:	SEC.26-T7N-R67W	MD Reference:	WELL @ 4968.0ft (Original Well Elev)
Site:	Casa Loma 8 Pad Sec.26-T7N-R67W	North Reference:	True
Well:	Casa Loma 5-25	Survey Calculation Method:	Minimum Curvature
Wellbore:	Wellbore #1		
Design:	Plan #1 (7-10-12)		

Planned Survey

Measured Depth (ft)	Inclination (°)	Azimuth (°)	Vertical Depth (ft)	+N/-S (ft)	+E/-W (ft)	Vertical Section (ft)	Dogleg Rate (°/100ft)	Build Rate (°/100ft)	Turn Rate (°/100ft)
7,640.0	0.00	0.00	7,405.2	-1,255.4	911.3	1,551.3	0.00	0.00	0.00
7,680.0	0.00	0.00	7,445.2	-1,255.4	911.3	1,551.3	0.00	0.00	0.00
7,687.8	0.00	0.00	7,453.0	-1,255.4	911.3	1,551.3	0.00	0.00	0.00
GRANEROS									
7,704.8	0.00	0.00	7,470.0	-1,255.4	911.3	1,551.3	0.00	0.00	0.00

Targets

Target Name	Dip Angle (°)	Dip Dir. (°)	TVD (ft)	+N/-S (ft)	+E/-W (ft)	Northing (ft)	Easting (ft)	Latitude	Longitude
- hit/miss target									
- Shape									
TARGET CIRCLE 197	0.00	0.00	7,013.0	-1,255.4	911.3	1,442,765.17	3,181,034.50	40.546965	-104.848572
- plan hits target center									
- Circle (radius 75.0)									
TARGET BHL 1972'F	0.00	0.00	5,800.0	-1,255.4	911.3	1,442,765.17	3,181,034.50	40.546965	-104.848572
- plan hits target center									
- Point									
LEGAL BOX 400' X 400'	0.00	0.00	7,013.0	-1,256.4	909.3	1,442,764.18	3,181,032.52	40.546962	-104.848579
- plan misses target center by 2.2ft at 7247.8ft MD (7013.0 TVD, -1255.4 N, 911.3 E)									
- Rectangle (sides W400.0 H400.0 D457.0)									

Casing Points

Measured Depth (ft)	Vertical Depth (ft)	Name	Casing Diameter (")	Hole Diameter (")
722.9	720.0	8 5/8"	8-5/8	12-1/4

Formations

Measured Depth (ft)	Vertical Depth (ft)	Name	Lithology	Dip (°)	Dip Direction (°)
3,747.5	3,598.0	PARKMAN		0.00	
4,532.5	4,343.0	SUSSEX		0.00	
4,932.8	4,723.0	SHANNON		0.00	
7,247.8	7,013.0	NIOBRARA		0.00	
7,512.8	7,278.0	FORT HAYS		0.00	
7,552.8	7,318.0	CODELL		0.00	
7,602.8	7,368.0	GREENHORN		0.00	
7,687.8	7,453.0	GRANEROS		0.00	



BAYSWATER EXPLORATION & PRODUCTION

SEC.26-T7N-R67W

Casa Loma 8 Pad Sec.26-T7N-R67W

Casa Loma 5-25

Wellbore #1

Plan #1 (7-10-12)

Anticollision Report

23 July, 2012

Company:	BAYSWATER EXPLORATION & PRODUCTION	Local Co-ordinate Reference:	Well Casa Loma 5-25
Project:	SEC.26-T7N-R67W	TVD Reference:	WELL @ 4968.0ft (Original Well Elev)
Reference Site:	Casa Loma 8 Pad Sec.26-T7N-R67W	MD Reference:	WELL @ 4968.0ft (Original Well Elev)
Site Error:	0.0ft	North Reference:	True
Reference Well:	Casa Loma 5-25	Survey Calculation Method:	Minimum Curvature
Well Error:	0.0ft	Output errors are at	2.00 sigma
Reference Wellbore	Wellbore #1	Database:	Landmark
Reference Design:	Plan #1 (7-10-12)	Offset TVD Reference:	Offset Datum

Offset Design Casa Loma 8 Pad Sec.26-T7N-R67W - Casa Loma 22-25 - Wellbore #1 - Plan #1 (7-16-12)													Offset Site Error:	0.0 ft
Survey Program: 0-MWD													Offset Well Error:	0.0 ft
Measured Depth (ft)	Vertical Depth (ft)	Measured Depth (ft)	Vertical Depth (ft)	Reference	Offset	Semi Major Axis	Highside Toolface (°)	Offset Wellbore Centre +N/-S (ft)	Offset Wellbore Centre +E/-W (ft)	Between Centres (ft)	Between Ellipses (ft)	Minimum Separation (ft)	Separation Factor	Warning
2,000.0	1,939.5	1,991.6	1,893.9	9.4	11.2	-28.83	-381.2	341.8	110.4	96.9	13.43	8.220		
2,100.0	2,034.4	2,090.5	1,981.9	10.1	12.2	-26.83	-415.6	370.7	125.2	111.1	14.01	8.931		
2,200.0	2,129.3	2,189.3	2,069.9	10.7	13.1	-25.25	-450.0	399.7	140.1	125.4	14.63	9.572		
2,300.0	2,224.2	2,288.1	2,158.0	11.4	14.1	-23.98	-484.4	428.6	155.1	139.8	15.28	10.151		
2,400.0	2,319.1	2,386.9	2,246.0	12.1	15.0	-22.93	-518.8	457.5	170.1	154.2	15.94	10.675		
2,500.0	2,414.0	2,485.7	2,334.0	12.7	16.0	-22.05	-553.1	486.5	185.2	168.6	16.61	11.151		
2,600.0	2,508.9	2,584.5	2,422.0	13.4	16.9	-21.31	-587.5	515.4	200.4	183.1	17.30	11.585		
2,700.0	2,603.8	2,683.4	2,510.0	14.1	17.9	-20.67	-621.9	544.3	215.5	197.5	17.99	11.981		
2,800.0	2,698.7	2,782.2	2,598.0	14.7	18.8	-20.11	-656.3	573.3	230.7	212.0	18.69	12.345		
2,900.0	2,793.7	2,881.0	2,686.0	15.4	19.8	-19.62	-690.6	602.2	245.9	226.5	19.40	12.679		
3,000.0	2,888.6	2,979.8	2,774.0	16.1	20.7	-19.19	-725.0	631.1	261.2	241.1	20.11	12.988		
3,100.0	2,983.5	3,078.6	2,862.0	16.7	21.7	-18.81	-759.4	660.1	276.4	255.6	20.82	13.273		
3,200.0	3,078.4	3,177.4	2,950.0	17.4	22.6	-18.47	-793.8	689.0	291.7	270.1	21.54	13.538		
3,300.0	3,173.3	3,276.3	3,038.0	18.0	23.6	-18.16	-828.2	717.9	306.9	284.6	22.27	13.784		
3,400.0	3,268.2	3,375.1	3,126.0	18.7	24.5	-17.88	-862.5	746.9	322.2	299.2	22.99	14.013		
3,500.0	3,363.1	3,473.9	3,214.1	19.4	25.5	-17.62	-896.9	775.8	337.5	313.7	23.72	14.228		
3,600.0	3,458.0	3,572.7	3,302.1	20.0	26.4	-17.39	-931.3	804.7	352.7	328.3	24.45	14.429		
3,700.0	3,552.9	3,671.5	3,390.1	20.7	27.4	-17.18	-965.7	833.7	368.0	342.8	25.18	14.617		
3,800.0	3,647.8	3,770.3	3,478.1	21.4	28.4	-16.98	-1,000.0	862.6	383.3	357.4	25.91	14.794		
3,900.0	3,742.7	3,869.1	3,566.1	22.0	29.3	-16.80	-1,034.4	891.6	398.6	372.0	26.64	14.960		
4,000.0	3,837.7	3,968.0	3,654.1	22.7	30.3	-16.63	-1,068.8	920.5	413.9	386.5	27.38	15.117		
4,100.0	3,932.6	4,066.8	3,742.1	23.4	31.2	-16.48	-1,103.2	949.4	429.2	401.1	28.11	15.266		
4,200.0	4,027.5	4,165.6	3,830.1	24.0	32.2	-16.33	-1,137.6	978.4	444.5	415.7	28.85	15.406		
4,300.0	4,122.4	4,264.4	3,918.1	24.7	33.1	-16.20	-1,171.9	1,007.3	459.8	430.2	29.59	15.539		
4,400.0	4,217.3	4,363.2	4,006.1	25.4	34.1	-16.07	-1,206.3	1,036.2	475.1	444.8	30.33	15.666		
4,500.0	4,312.2	4,462.0	4,094.1	26.0	35.1	-15.95	-1,240.7	1,065.2	490.4	459.4	31.07	15.785		
4,600.0	4,407.1	4,560.9	4,182.1	26.7	36.0	-15.84	-1,275.1	1,094.1	505.7	473.9	31.81	15.900		
4,700.0	4,502.0	4,659.7	4,270.2	27.4	37.0	-15.73	-1,309.5	1,123.0	521.1	488.5	32.55	16.008		
4,800.0	4,596.9	4,758.5	4,358.2	28.0	37.9	-15.63	-1,343.8	1,152.0	536.4	503.1	33.29	16.112		
4,900.0	4,691.8	4,857.3	4,446.2	28.7	38.9	-15.54	-1,378.2	1,180.9	551.7	517.7	34.03	16.210		
5,000.0	4,786.7	4,956.1	4,534.2	29.4	39.8	-15.45	-1,412.6	1,209.8	567.0	532.2	34.78	16.305		
5,100.0	4,881.7	5,054.9	4,622.2	30.0	40.8	-15.37	-1,447.0	1,238.8	582.3	546.8	35.52	16.395		
5,116.8	4,897.6	5,071.5	4,637.0	30.1	41.0	-15.36	-1,452.7	1,243.6	584.9	549.3	35.64	16.410		
5,200.0	4,976.9	5,153.6	4,710.0	30.6	41.8	-15.33	-1,481.3	1,267.7	598.8	562.6	36.19	16.546		
5,300.0	5,073.2	5,251.6	4,797.3	31.0	42.7	-15.25	-1,515.4	1,296.4	618.5	581.8	36.74	16.837		
5,400.0	5,170.3	5,348.8	4,883.9	31.4	43.6	-15.11	-1,549.2	1,324.8	641.6	604.4	37.20	17.247		
5,500.0	5,268.3	5,445.2	4,969.8	31.8	44.6	-14.93	-1,582.8	1,353.1	667.9	630.3	37.58	17.772		
5,600.0	5,366.8	5,561.0	5,073.4	32.0	45.5	-14.65	-1,622.2	1,386.2	696.5	658.6	37.89	18.382		
5,700.0	5,465.9	5,687.9	5,189.3	32.3	46.4	-14.35	-1,661.8	1,419.6	724.5	686.4	38.13	19.000		
5,800.0	5,565.4	5,816.8	5,309.2	32.5	47.2	-14.06	-1,698.0	1,450.0	751.5	713.2	38.30	19.624		
5,900.0	5,665.2	5,947.8	5,433.1	32.6	47.9	-13.78	-1,730.4	1,477.4	777.5	739.1	38.38	20.256		
6,000.0	5,765.2	6,080.7	5,560.7	32.7	48.5	-13.50	-1,759.0	1,501.4	802.4	764.0	38.40	20.899		
6,034.8	5,800.0	6,127.5	5,606.0	32.8	48.7	-130.61	-1,767.9	1,508.9	810.8	772.4	38.39	21.124		
6,100.0	5,865.2	6,215.9	5,692.1	32.8	49.0	-130.85	-1,783.3	1,521.9	825.5	786.9	38.58	21.398		
6,200.0	5,965.2	6,353.9	5,827.5	32.9	49.4	-131.13	-1,803.2	1,538.6	844.1	805.2	38.87	21.717		
6,300.0	6,065.2	6,494.1	5,966.3	32.9	49.8	-131.33	-1,818.3	1,551.3	858.0	818.9	39.17	21.904		
6,400.0	6,165.2	6,635.9	6,107.5	33.0	50.0	-131.46	-1,828.3	1,559.7	867.1	827.6	39.47	21.969		
6,500.0	6,265.2	6,778.7	6,250.2	33.1	50.2	-131.52	-1,832.9	1,563.6	871.3	831.5	39.77	21.911		
6,600.0	6,365.2	6,893.6	6,365.2	33.2	50.3	-131.52	-1,833.2	1,563.9	871.6	831.6	40.04	21.771		
6,700.0	6,465.2	6,993.6	6,465.2	33.3	50.3	-131.52	-1,833.2	1,563.9	871.6	831.3	40.28	21.637		
6,800.0	6,565.2	7,093.6	6,565.2	33.3	50.4	-131.52	-1,833.2	1,563.9	871.6	831.1	40.53	21.503		

CC - Min centre to center distance or convergent point, SF - min separation factor, ES - min ellipse separation

Company:	BAYSWATER EXPLORATION & PRODUCTION	Local Co-ordinate Reference:	Well Casa Loma 5-25
Project:	SEC.26-T7N-R67W	TVD Reference:	WELL @ 4968.0ft (Original Well Elev)
Reference Site:	Casa Loma 8 Pad Sec.26-T7N-R67W	MD Reference:	WELL @ 4968.0ft (Original Well Elev)
Site Error:	0.0ft	North Reference:	True
Reference Well:	Casa Loma 5-25	Survey Calculation Method:	Minimum Curvature
Well Error:	0.0ft	Output errors are at	2.00 sigma
Reference Wellbore	Wellbore #1	Database:	Landmark
Reference Design:	Plan #1 (7-10-12)	Offset TVD Reference:	Offset Datum

Offset Design Casa Loma 8 Pad Sec.26-T7N-R67W - Casa Loma 22-25 - Wellbore #1 - Plan #1 (7-16-12)												Offset Site Error:	0.0 ft
Survey Program: 0-MWD												Offset Well Error:	0.0 ft
Measured Depth (ft)	Vertical Depth (ft)	Measured Depth (ft)	Vertical Depth (ft)	Semi Major Axis		Highside Toolface (°)	Offset Wellbore Centre		Distance		Minimum Separation (ft)	Separation Factor	Warning
Reference	Offset	Reference	Offset	(ft)	(ft)		+N/-S (ft)	+E/-W (ft)	Between Centres (ft)	Between Ellipses (ft)			
6,900.0	6,665.2	7,193.6	6,665.2	33.4	50.4	131.52	-1,833.2	1,563.9	871.6	830.8	40.79	21.369	
7,000.0	6,765.2	7,293.6	6,765.2	33.5	50.5	131.52	-1,833.2	1,563.9	871.6	830.6	41.04	21.236	
7,100.0	6,865.2	7,393.6	6,865.2	33.6	50.5	131.52	-1,833.2	1,563.9	871.6	830.3	41.30	21.102	
7,200.0	6,965.2	7,493.6	6,965.2	33.7	50.6	131.52	-1,833.2	1,563.9	871.6	830.0	41.57	20.968	
7,300.0	7,065.2	7,593.6	7,065.2	33.8	50.6	131.52	-1,833.2	1,563.9	871.6	829.8	41.83	20.834	
7,400.0	7,165.2	7,693.6	7,165.2	33.8	50.7	131.52	-1,833.2	1,563.9	871.6	829.5	42.10	20.701	
7,500.0	7,265.2	7,793.6	7,265.2	33.9	50.8	131.52	-1,833.2	1,563.9	871.6	829.2	42.38	20.568	
7,600.0	7,365.2	7,893.6	7,365.2	34.0	50.8	131.52	-1,833.2	1,563.9	871.6	829.0	42.65	20.435	
7,704.8	7,470.0	7,998.5	7,470.0	34.1	50.9	131.52	-1,833.2	1,563.9	871.6	828.7	42.95	20.296	

Company:	BAYSWATER EXPLORATION & PRODUCTION	Local Co-ordinate Reference:	Well Casa Loma 5-25
Project:	SEC.26-T7N-R67W	TVD Reference:	WELL @ 4968.0ft (Original Well Elev)
Reference Site:	Casa Loma 8 Pad Sec.26-T7N-R67W	MD Reference:	WELL @ 4968.0ft (Original Well Elev)
Site Error:	0.0ft	North Reference:	True
Reference Well:	Casa Loma 5-25	Survey Calculation Method:	Minimum Curvature
Well Error:	0.0ft	Output errors are at	2.00 sigma
Reference Wellbore	Wellbore #1	Database:	Landmark
Reference Design:	Plan #1 (7-10-12)	Offset TVD Reference:	Offset Datum

Offset Design Casa Loma 8 Pad Sec.26-T7N-R67W - Casa Loma 31-25 - Wellbore #1 - Plan #1 (7-16-12)													Offset Site Error:	0.0 ft
Survey Program: 0-MWD													Offset Well Error:	0.0 ft
Measured Depth (ft)	Vertical Depth (ft)	Measured Depth (ft)	Vertical Depth (ft)	Reference	Offset	Semi Major Axis	Highside Toolface (°)	Offset Wellbore Centre +N/-S (ft)	Offset Wellbore Centre +E/-W (ft)	Between Centres (ft)	Between Ellipses (ft)	Minimum Separation (ft)	Separation Factor	Warning
0.0	0.0	0.0	0.0	0.0	0.0	-134.74	-11.3	-11.4	16.0	16.0	0.00	N/A		
100.0	100.0	100.0	100.0	0.1	0.1	-134.74	-11.3	-11.4	16.0	15.8	0.22	71.364		
200.0	200.0	200.0	200.0	0.3	0.3	-134.74	-11.3	-11.4	16.0	15.4	0.67	23.788		
300.0	300.0	300.0	300.0	0.5	0.6	87.48	-11.3	-11.4	15.9	14.8	1.10	14.387		
318.3	318.3	318.3	318.3	0.6	0.6	90.00	-11.3	-11.4	15.9	14.7	1.18	13.403 CC, ES		
400.0	399.8	399.8	399.8	0.8	0.8	105.93	-11.3	-11.4	16.5	15.0	1.54	10.716		
500.0	499.5	499.5	499.5	1.0	1.0	129.73	-11.3	-11.4	20.7	18.7	2.00	10.313 SF		
600.0	598.7	598.7	598.7	1.3	1.2	147.82	-11.3	-11.4	30.0	27.5	2.47	12.129		
700.0	697.5	697.5	697.5	1.6	1.5	158.60	-11.3	-11.4	44.0	41.1	2.93	15.009		
800.0	795.6	795.6	795.6	2.0	1.7	164.92	-11.3	-11.4	62.2	58.8	3.40	18.324		
900.0	893.1	893.1	893.1	2.5	1.9	168.82	-11.3	-11.4	84.2	80.3	3.86	21.811		
1,000.0	989.6	989.6	989.6	3.0	2.1	171.36	-11.3	-11.4	109.7	105.4	4.32	25.362		
1,100.0	1,085.3	1,085.3	1,085.3	3.6	2.3	173.10	-11.3	-11.4	138.7	133.9	4.79	28.928		
1,118.0	1,102.4	1,102.4	1,102.4	3.7	2.4	173.36	-11.3	-11.4	144.3	139.4	4.88	29.572		
1,200.0	1,180.2	1,180.2	1,180.2	4.2	2.5	174.36	-11.3	-11.4	170.0	164.7	5.28	32.206		
1,300.0	1,275.1	1,275.1	1,275.1	4.8	2.8	175.24	-11.3	-11.4	201.3	195.6	5.77	34.900		
1,400.0	1,370.0	1,370.0	1,370.0	5.5	3.0	175.89	-11.3	-11.4	232.8	226.5	6.27	37.147		
1,500.0	1,464.9	1,464.9	1,464.9	6.1	3.2	176.38	-11.3	-11.4	264.2	257.4	6.77	39.046		
1,600.0	1,559.8	1,556.6	1,566.6	6.8	3.4	176.76	-12.0	-11.0	295.0	287.7	7.26	40.604		
1,700.0	1,654.7	1,674.2	1,674.1	7.4	3.6	176.99	-15.9	-8.7	322.4	314.7	7.74	41.637		
1,800.0	1,749.7	1,784.0	1,783.6	8.1	3.8	177.08	-23.4	-4.3	346.3	338.1	8.23	42.074		
1,900.0	1,844.6	1,895.7	1,894.5	8.8	4.0	177.06	-34.8	2.4	366.4	357.7	8.74	41.950		
2,000.0	1,939.5	2,009.1	2,006.4	9.4	4.3	176.94	-50.2	11.5	382.8	373.5	9.26	41.344		
2,100.0	2,034.4	2,113.1	2,108.6	10.1	4.6	176.77	-67.0	21.3	396.1	386.3	9.78	40.500		
2,200.0	2,129.3	2,212.2	2,205.9	10.7	4.9	176.62	-83.2	30.8	409.2	398.9	10.30	39.712		
2,300.0	2,224.2	2,311.3	2,303.2	11.4	5.2	176.48	-99.4	40.3	422.3	411.5	10.83	38.981		
2,400.0	2,319.1	2,410.5	2,400.6	12.1	5.5	176.34	-115.5	49.8	435.4	424.1	11.37	38.298		
2,500.0	2,414.0	2,509.6	2,497.9	12.7	5.8	176.22	-131.7	59.4	448.6	436.7	11.91	37.658		
2,600.0	2,508.9	2,608.7	2,595.2	13.4	6.2	176.10	-147.9	68.9	461.7	449.2	12.46	37.060		
2,700.0	2,603.8	2,707.8	2,692.6	14.1	6.6	175.98	-164.1	78.4	474.8	461.8	13.01	36.500		
2,800.0	2,698.7	2,807.0	2,789.9	14.7	6.9	175.88	-180.3	87.9	488.0	474.4	13.56	35.977		
2,900.0	2,793.7	2,906.1	2,887.2	15.4	7.3	175.77	-196.5	97.4	501.1	487.0	14.12	35.486		
3,000.0	2,888.6	3,005.2	2,984.6	16.1	7.7	175.68	-212.7	106.9	514.2	499.6	14.68	35.026		
3,100.0	2,983.5	3,104.4	3,081.9	16.7	8.1	175.59	-228.9	116.4	527.4	512.1	15.25	34.593		
3,200.0	3,078.4	3,203.5	3,179.2	17.4	8.5	175.50	-245.1	125.9	540.5	524.7	15.81	34.186		
3,300.0	3,173.3	3,302.6	3,276.6	18.0	8.9	175.42	-261.3	135.4	553.7	537.3	16.38	33.803		
3,400.0	3,268.2	3,401.8	3,373.9	18.7	9.2	175.34	-277.5	145.0	566.8	549.8	16.95	33.442		
3,500.0	3,363.1	3,500.9	3,471.2	19.4	9.6	175.26	-293.6	154.5	579.9	562.4	17.52	33.101		
3,600.0	3,458.0	3,600.0	3,568.6	20.0	10.1	175.19	-309.8	164.0	593.1	575.0	18.09	32.778		
3,700.0	3,552.9	3,699.1	3,665.9	20.7	10.5	175.12	-326.0	173.5	606.2	587.6	18.67	32.472		
3,800.0	3,647.8	3,798.3	3,763.2	21.4	10.9	175.05	-342.2	183.0	619.4	600.1	19.25	32.183		
3,900.0	3,742.7	3,897.4	3,860.6	22.0	11.3	174.99	-358.4	192.5	632.5	612.7	19.82	31.908		
4,000.0	3,837.7	3,996.5	3,957.9	22.7	11.7	174.93	-374.6	202.0	645.7	625.3	20.40	31.647		
4,100.0	3,932.6	4,095.7	4,055.3	23.4	12.1	174.87	-390.8	211.5	658.8	637.8	20.98	31.399		
4,200.0	4,027.5	4,194.8	4,152.6	24.0	12.5	174.82	-407.0	221.0	672.0	650.4	21.56	31.163		
4,300.0	4,122.4	4,293.9	4,249.9	24.7	12.9	174.76	-423.2	230.6	685.1	663.0	22.14	30.938		
4,400.0	4,217.3	4,393.1	4,347.3	25.4	13.3	174.71	-439.4	240.1	698.3	675.5	22.73	30.723		
4,500.0	4,312.2	4,492.2	4,444.6	26.0	13.7	174.66	-455.6	249.6	711.4	688.1	23.31	30.518		
4,600.0	4,407.1	4,591.3	4,541.9	26.7	14.2	174.61	-471.8	259.1	724.6	700.7	23.90	30.322		
4,700.0	4,502.0	4,690.4	4,639.3	27.4	14.6	174.56	-487.9	268.6	737.7	713.2	24.48	30.134		
4,800.0	4,596.9	4,789.6	4,736.6	28.0	15.0	174.52	-504.1	278.1	750.9	725.8	25.07	29.954		

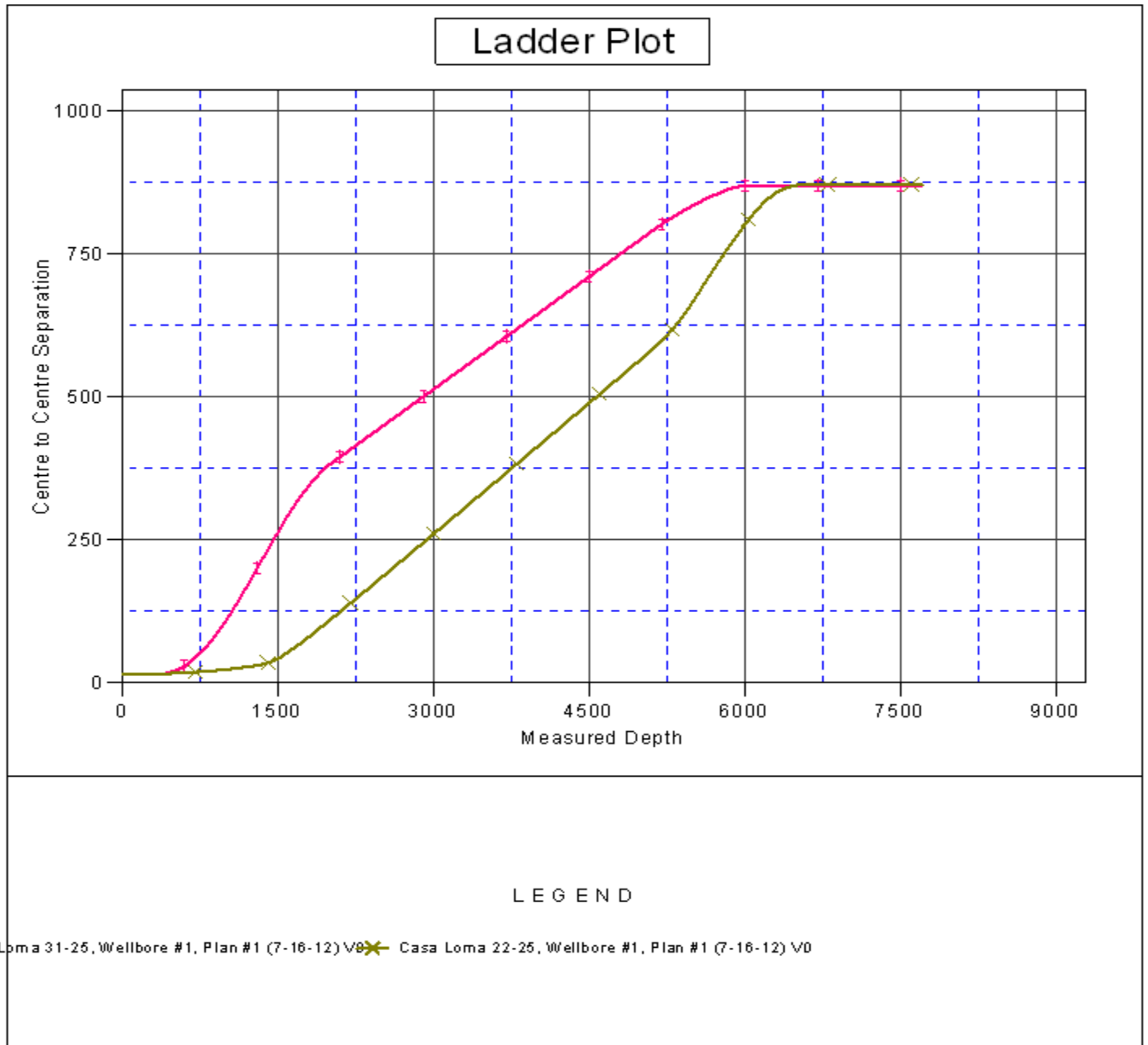
CC - Min centre to center distance or convergent point, SF - min separation factor, ES - min ellipse separation

Company:	BAYSWATER EXPLORATION & PRODUCTION	Local Co-ordinate Reference:	Well Casa Loma 5-25
Project:	SEC.26-T7N-R67W	TVD Reference:	WELL @ 4968.0ft (Original Well Elev)
Reference Site:	Casa Loma 8 Pad Sec.26-T7N-R67W	MD Reference:	WELL @ 4968.0ft (Original Well Elev)
Site Error:	0.0ft	North Reference:	True
Reference Well:	Casa Loma 5-25	Survey Calculation Method:	Minimum Curvature
Well Error:	0.0ft	Output errors are at	2.00 sigma
Reference Wellbore	Wellbore #1	Database:	Landmark
Reference Design:	Plan #1 (7-10-12)	Offset TVD Reference:	Offset Datum

Offset Design Casa Loma 8 Pad Sec.26-T7N-R67W - Casa Loma 31-25 - Wellbore #1 - Plan #1 (7-16-12)													Offset Site Error:	0.0 ft
Survey Program: 0-MWD													Offset Well Error:	0.0 ft
Measured Depth (ft)	Vertical Depth (ft)	Measured Depth (ft)	Vertical Depth (ft)	Reference	Offset	Semi Major Axis	Highside Toolface (°)	Offset Wellbore Centre +N/-S (ft)	Offset Wellbore Centre +E/-W (ft)	Between Centres (ft)	Between Ellipses (ft)	Minimum Separation (ft)	Separation Factor	Warning
4,900.0	4,691.8	4,888.7	4,833.9	28.7	15.4	174.48		-520.3	287.6	764.0	738.4	25.65	29.782	
5,000.0	4,786.7	4,987.8	4,931.3	29.4	15.8	174.43		-536.5	297.1	777.2	750.9	26.24	29.617	
5,100.0	4,881.7	5,087.0	5,028.6	30.0	16.3	174.39		-552.7	306.6	790.3	763.5	26.83	29.459	
5,116.8	4,897.6	5,103.6	5,044.9	30.1	16.3	174.39		-555.4	308.2	792.5	765.6	26.93	29.433	
5,200.0	4,976.9	5,171.1	5,111.3	30.6	16.6	174.38		-566.0	314.4	802.9	775.5	27.39	29.313	
5,300.0	5,073.2	5,248.9	5,188.1	31.0	16.8	174.38		-576.5	320.6	814.7	786.8	27.86	29.237	
5,400.0	5,170.3	5,326.5	5,265.1	31.4	17.0	174.40		-585.3	325.8	825.6	797.3	28.28	29.191	
5,500.0	5,268.3	5,400.0	5,338.2	31.8	17.2	174.41		-591.9	329.6	835.8	807.1	28.64	29.179	
5,600.0	5,366.8	5,481.2	5,419.2	32.0	17.4	174.44		-597.3	332.8	845.1	816.1	28.96	29.177	
5,700.0	5,465.9	5,558.4	5,496.3	32.3	17.5	174.48		-600.6	334.8	853.5	824.3	29.22	29.209	
5,800.0	5,565.4	5,635.5	5,573.3	32.5	17.6	174.52		-602.1	335.7	861.2	831.8	29.43	29.260	
5,900.0	5,665.2	5,727.4	5,665.2	32.6	17.7	174.56		-602.2	335.7	867.5	837.8	29.62	29.285	
6,000.0	5,765.2	5,827.3	5,765.2	32.7	17.9	174.59		-602.2	335.7	870.4	840.6	29.78	29.230	
6,034.8	5,800.0	5,862.2	5,800.0	32.8	17.9	-41.38		-602.2	335.7	870.6	840.8	29.83	29.188	
6,100.0	5,865.2	5,927.3	5,865.2	32.8	18.0	-41.38		-602.2	335.7	870.6	840.6	30.04	28.980	
6,200.0	5,965.2	6,027.3	5,965.2	32.9	18.1	-41.38		-602.2	335.7	870.6	840.3	30.36	28.675	
6,300.0	6,065.2	6,127.3	6,065.2	32.9	18.3	-41.38		-602.2	335.7	870.6	839.9	30.68	28.373	
6,400.0	6,165.2	6,227.3	6,165.2	33.0	18.4	-41.38		-602.2	335.7	870.6	839.6	31.01	28.075	
6,500.0	6,265.2	6,327.3	6,265.2	33.1	18.6	-41.38		-602.2	335.7	870.6	839.3	31.34	27.781	
6,600.0	6,365.2	6,427.3	6,365.2	33.2	18.7	-41.38		-602.2	335.7	870.6	838.9	31.67	27.490	
6,700.0	6,465.2	6,527.3	6,465.2	33.3	18.9	-41.38		-602.2	335.7	870.6	838.6	32.00	27.203	
6,800.0	6,565.2	6,627.3	6,565.2	33.3	19.0	-41.38		-602.2	335.7	870.6	838.3	32.34	26.920	
6,900.0	6,665.2	6,727.3	6,665.2	33.4	19.1	-41.38		-602.2	335.7	870.6	837.9	32.68	26.640	
7,000.0	6,765.2	6,827.3	6,765.2	33.5	19.3	-41.38		-602.2	335.7	870.6	837.6	33.02	26.365	
7,100.0	6,865.2	6,927.3	6,865.2	33.6	19.4	-41.38		-602.2	335.7	870.6	837.2	33.37	26.092	
7,200.0	6,965.2	7,027.3	6,965.2	33.7	19.6	-41.38		-602.2	335.7	870.6	836.9	33.71	25.824	
7,300.0	7,065.2	7,127.3	7,065.2	33.8	19.8	-41.38		-602.2	335.7	870.6	836.6	34.06	25.559	
7,400.0	7,165.2	7,227.3	7,165.2	33.8	19.9	-41.38		-602.2	335.7	870.6	836.2	34.41	25.299	
7,500.0	7,265.2	7,327.3	7,265.2	33.9	20.1	-41.38		-602.2	335.7	870.6	835.8	34.77	25.041	
7,600.0	7,365.2	7,427.3	7,365.2	34.0	20.2	-41.38		-602.2	335.7	870.6	835.5	35.12	24.788	
7,664.1	7,429.2	7,491.4	7,429.2	34.1	20.3	-41.38		-602.2	335.7	870.6	835.3	35.35	24.627	
7,704.8	7,470.0	7,517.2	7,455.0	34.1	20.4	-41.38		-602.2	335.7	870.7	835.3	35.47	24.550	

Company:	BAYSWATER EXPLORATION & PRODUCTION	Local Co-ordinate Reference:	Well Casa Loma 5-25
Project:	SEC.26-T7N-R67W	TVD Reference:	WELL @ 4968.0ft (Original Well Elev)
Reference Site:	Casa Loma 8 Pad Sec.26-T7N-R67W	MD Reference:	WELL @ 4968.0ft (Original Well Elev)
Site Error:	0.0ft	North Reference:	True
Reference Well:	Casa Loma 5-25	Survey Calculation Method:	Minimum Curvature
Well Error:	0.0ft	Output errors are at	2.00 sigma
Reference Wellbore	Wellbore #1	Database:	Landmark
Reference Design:	Plan #1 (7-10-12)	Offset TVD Reference:	Offset Datum

Reference Depths are relative to WELL @ 4968.0ft (Original Well Elev) Coordinates are relative to: Casa Loma 5-25
Offset Depths are relative to Offset Datum Coordinate System is US State Plane 1983, Colorado Northern Zone
Central Meridian is -105.500000 ° Grid Convergence at Surface is: 0.42°



Company:	BAYSWATER EXPLORATION & PRODUCTION	Local Co-ordinate Reference:	Well Casa Loma 5-25
Project:	SEC.26-T7N-R67W	TVD Reference:	WELL @ 4968.0ft (Original Well Elev)
Reference Site:	Casa Loma 8 Pad Sec.26-T7N-R67W	MD Reference:	WELL @ 4968.0ft (Original Well Elev)
Site Error:	0.0ft	North Reference:	True
Reference Well:	Casa Loma 5-25	Survey Calculation Method:	Minimum Curvature
Well Error:	0.0ft	Output errors are at	2.00 sigma
Reference Wellbore	Wellbore #1	Database:	Landmark
Reference Design:	Plan #1 (7-10-12)	Offset TVD Reference:	Offset Datum

Reference Depths are relative to WELL @ 4968.0ft (Original Well Elev) Coordinates are relative to: Casa Loma 5-25
Offset Depths are relative to Offset Datum Coordinate System is US State Plane 1983, Colorado Northern Zone
Central Meridian is -105.500000 ° Grid Convergence at Surface is: 0.42°

