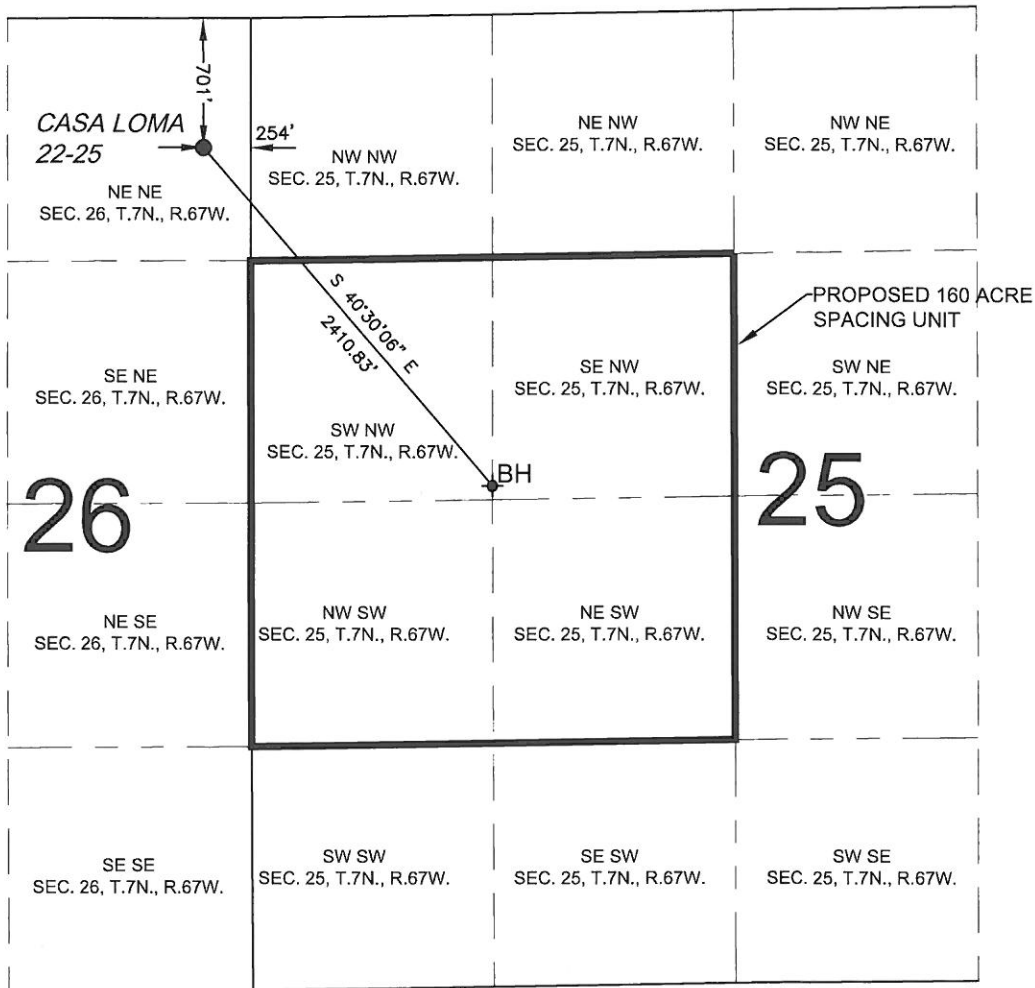


PROPOSED 318 Ae SPACING UNIT

SECTION 25, TOWNSHIP 7 NORTH, RANGE 67 WEST, 6TH P.M.



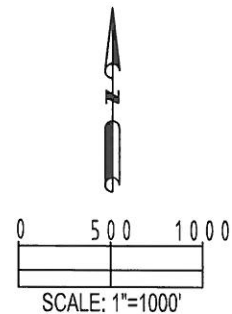
WELL CASA LOMA 22-25 TO BE LOCATED 701' FNL AND 254' FEL, T7N, R67W, SEC. 26

SURFACE LOCATION
 LATITUDE= 40.550442°
 LONGITUDE= 104.851810°

BOTTOM HOLE LOCATION
 LATITUDE= 40.545379°
 LONGITUDE= 104.846224°

LEGEND

- ◆ = BOTTOM HOLE
- = PROPOSED WELL
- BH = BOTTOM HOLE
- ◆ = EXISTING WELL



PREPARED BY PFS Petroleum Field Services, LLC 1801 W. 13th Ave. Denver, CO 80204	FIELD DATE: 05-21-12	SURFACE LOCATION: NE 1/4 NE 1/4, SEC. 26, T7N, R67W, 6TH P.M. WELD COUNTY, COLORADO
	DRAWING DATE: 08-21-12	
BY CLM	CHECKED BY JAH	