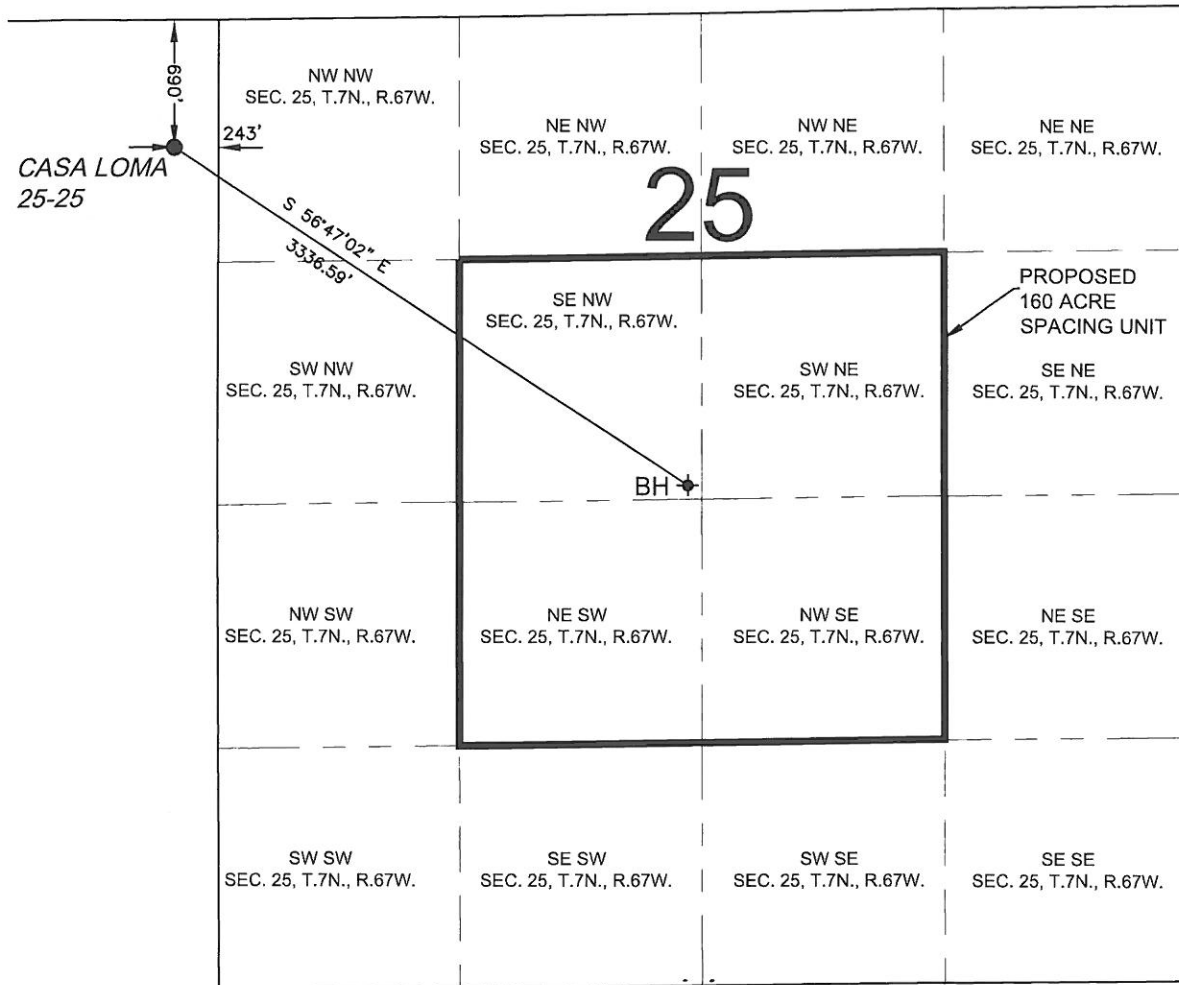


# PROPOSED 318 Ae SPACING UNIT

SECTION 25, TOWNSHIP 7 NORTH, RANGE 67 WEST, 6TH P.M.



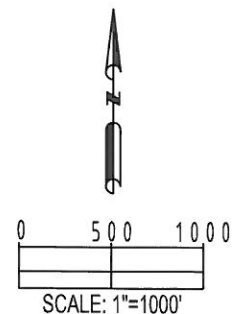
WELL CASA LOMA 25-25 TO BE LOCATED 690' FNL AND 243' FEL, T7N, R67W, SEC. 26

SURFACE LOCATION  
 LATITUDE= 40.550473°  
 LONGITUDE= 104.851769°

BOTTOM HOLE LOCATION  
 LATITUDE= 40.545399°  
 LONGITUDE= 104.841773°

## LEGEND

- ◆ = BOTTOM HOLE
- = PROPOSED WELL
- BH = BOTTOM HOLE
- ◆ = EXISTING WELL



PREPARED BY <b>PFS</b> Petroleum Field Services, LLC 1801 W. 13th Ave. Denver, CO 80204	FIELD DATE: 05-21-12	SURFACE LOCATION: NE 1/4 NE 1/4, SEC. 26, T7N, R67W, 6TH P.M. WELD COUNTY, COLORADO
	DRAWING DATE: 08-21-12	
BY: CLM	CHECKED BY: JAH	