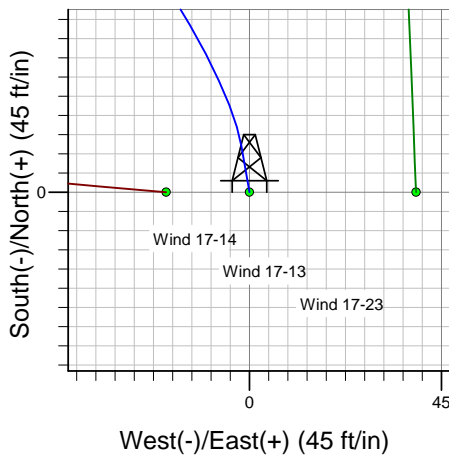
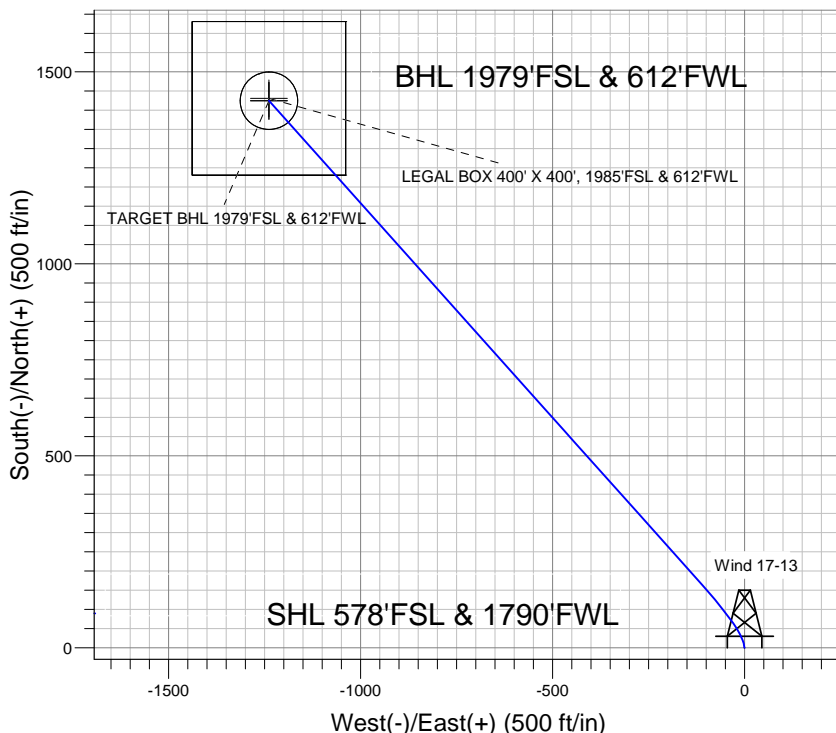
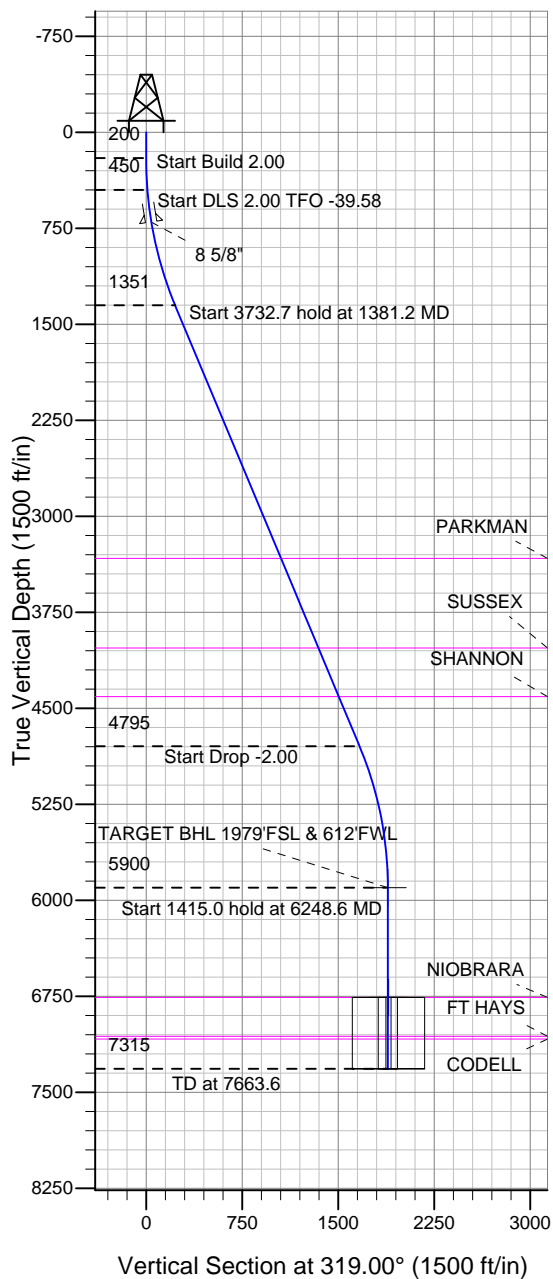


### Well Name: Wind 17-13

Surface Location: Wind 17-14 Pad Sec.17-T4N-R67W  
 North American Datum 1983 , US State Plane 1983 , Colorado Northern Zone  
 Ground Elevation: 4840.0

+N/-S	+E/-W	Northing	Easting	Latitude	Longitude	Slot
0.0	0.0	1355358.25	3162681.42	40.307390	-104.916680	
		RKB - 13'	WELL @ 4853.0ft (RKB - 13')			

### Trilogy Resources, LLC. Weld County, CO



Wind 17-14 Pad Sec.17-T4N-R67W  
 Wind 17-13  
 Plan #1 (11-19-12)  
 14:13, November 20 2012



Azimuths to True North  
 Magnetic North: 8.74°  
 Magnetic Field  
 Strength: 52915.6snT  
 Dip Angle: 66.90°  
 Date: 11/19/2012  
 Model: IGRF2010

#### WELLBORE TARGET DETAILS (LAT/LONG)

Name	TVD	+N/-S	+E/-W	Latitude	Longitude	Shape
TARGET BHL 1979'FSL & 612'FWL	5900.0	1424.5	-1238.3	40.311300	-104.921120	Point
LEGAL BOX 400' X 400', 1985'FSL & 612'FWL	6758.0	1430.5	-1238.3	40.311317	-104.921120	Rectangle (Sides: L400.0 W400.0)
TARGET CIRCLE 1979'FSL & 612'FWL	6758.0	1424.5	-1238.3	40.311300	-104.921120	Circle (Radius: 75.0)

#### SECTION DETAILS

Sec	MD	Inc	Azi	TVD	+N/-S	+E/-W	DLeg	TFace	VSec	Target
1	0.0	0.00	0.00	0.0	0.0	0.0	0.00	0.00	0.0	
2	200.0	0.00	0.00	200.0	0.0	0.0	0.00	0.00	0.0	
3	450.0	5.00	350.00	449.7	10.7	-1.9	2.00	350.00	9.3	
4	1381.2	22.69	318.17	1351.0	186.1	-129.9	2.00	-39.58	225.7	
5	5113.9	22.69	318.17	4794.7	1259.2	-1090.3	0.00	0.00	1665.7	
6	6248.6	0.00	0.00	5900.0	1424.5	-1238.3	2.00	180.00	1887.4	TARGET BHL 1979'FSL & 612'FWL
7	7663.6	0.00	0.00	7315.0	1424.5	-1238.3	0.00	0.00	1887.4	



# **Trilogy Resources, LLC. Weld County, CO**

**SEC.17-T4N-R67W**

**Wind 17-14 Pad Sec.17-T4N-R67W**

**Wind 17-13**

**Wellbore #1**

**Plan: Plan #1 (11-19-12)**

## **Standard Planning Report**

**20 November, 2012**

Plan Sections										
Measured Depth (ft)	Inclination (°)	Azimuth (°)	Vertical Depth (ft)	+N/-S (ft)	+E/-W (ft)	Dogleg Rate (°/100ft)	Build Rate (°/100ft)	Turn Rate (°/100ft)	TFO (°)	Target
0.0	0.00	0.00	0.0	0.0	0.0	0.00	0.00	0.00	0.00	
200.0	0.00	0.00	200.0	0.0	0.0	0.00	0.00	0.00	0.00	
450.0	5.00	350.00	449.7	10.7	-1.9	2.00	2.00	0.00	350.00	
1,381.2	22.69	318.17	1,351.0	186.1	-129.9	2.00	1.90	-3.42	-39.58	
5,113.9	22.69	318.17	4,794.7	1,259.2	-1,090.3	0.00	0.00	0.00	0.00	
6,248.6	0.00	0.00	5,900.0	1,424.5	-1,238.3	2.00	-2.00	0.00	180.00	TARGET BHL 1979
7,663.6	0.00	0.00	7,315.0	1,424.5	-1,238.3	0.00	0.00	0.00	0.00	

<b>Database:</b>	Landmark	<b>Local Co-ordinate Reference:</b>	Well Wind 17-13
<b>Company:</b>	Trilogy Resources, LLC. Weld County, CO	<b>TVD Reference:</b>	WELL @ 4853.0ft (RKB - 13')
<b>Project:</b>	SEC.17-T4N-R67W	<b>MD Reference:</b>	WELL @ 4853.0ft (RKB - 13')
<b>Site:</b>	Wind 17-14 Pad Sec.17-T4N-R67W	<b>North Reference:</b>	True
<b>Well:</b>	Wind 17-13	<b>Survey Calculation Method:</b>	Minimum Curvature
<b>Wellbore:</b>	Wellbore #1		
<b>Design:</b>	Plan #1 (11-19-12)		

Planned Survey									
Measured Depth (ft)	Inclination (°)	Azimuth (°)	Vertical Depth (ft)	+N/-S (ft)	+E/-W (ft)	Vertical Section (ft)	Dogleg Rate (°/100ft)	Build Rate (°/100ft)	Turn Rate (°/100ft)
0.0	0.00	0.00	0.0	0.0	0.0	0.0	0.00	0.00	0.00
40.0	0.00	0.00	40.0	0.0	0.0	0.0	0.00	0.00	0.00
80.0	0.00	0.00	80.0	0.0	0.0	0.0	0.00	0.00	0.00
120.0	0.00	0.00	120.0	0.0	0.0	0.0	0.00	0.00	0.00
160.0	0.00	0.00	160.0	0.0	0.0	0.0	0.00	0.00	0.00
200.0	0.00	0.00	200.0	0.0	0.0	0.0	0.00	0.00	0.00
240.0	0.80	350.00	240.0	0.3	0.0	0.2	2.00	2.00	0.00
280.0	1.60	350.00	280.0	1.1	-0.2	1.0	2.00	2.00	0.00
320.0	2.40	350.00	320.0	2.5	-0.4	2.2	2.00	2.00	0.00
360.0	3.20	350.00	359.9	4.4	-0.8	3.8	2.00	2.00	0.00
400.0	4.00	350.00	399.8	6.9	-1.2	6.0	2.00	2.00	0.00
440.0	4.80	350.00	439.7	9.9	-1.7	8.6	2.00	2.00	0.00
450.0	5.00	350.00	449.7	10.7	-1.9	9.3	2.00	2.00	0.00
480.0	5.48	345.99	479.6	13.4	-2.5	11.7	2.00	1.59	-13.36
520.0	6.14	341.64	519.4	17.3	-3.6	15.4	2.00	1.67	-10.88
560.0	6.84	338.15	559.1	21.5	-5.2	19.6	2.00	1.74	-8.72
600.0	7.56	335.31	598.8	26.1	-7.1	24.4	2.00	1.79	-7.09
640.0	8.29	332.97	638.4	31.1	-9.6	29.7	2.00	1.83	-5.86
680.0	9.03	331.01	677.9	36.4	-12.4	35.6	2.00	1.86	-4.91
702.3	9.45	330.04	700.0	39.5	-14.2	39.1	2.00	1.88	-4.31
8 5/8"									
720.0	9.79	329.34	717.4	42.1	-15.6	42.0	2.00	1.89	-3.98
760.0	10.54	327.91	756.8	48.1	-19.3	49.0	2.00	1.90	-3.57
800.0	11.31	326.67	796.0	54.5	-23.4	56.5	2.00	1.91	-3.09
840.0	12.08	325.59	835.2	61.2	-27.9	64.5	2.00	1.92	-2.71
880.0	12.85	324.64	874.3	68.3	-32.9	73.1	2.00	1.93	-2.39
920.0	13.63	323.79	913.2	75.7	-38.2	82.2	2.00	1.94	-2.12
960.0	14.41	323.03	952.0	83.5	-44.0	91.9	2.00	1.95	-1.89
1,000.0	15.19	322.35	990.7	91.6	-50.2	102.1	2.00	1.95	-1.70
1,040.0	15.97	321.73	1,029.2	100.1	-56.8	112.8	2.00	1.96	-1.54
1,080.0	16.75	321.17	1,067.6	108.9	-63.8	124.1	2.00	1.96	-1.40
1,120.0	17.54	320.66	1,105.8	118.1	-71.3	135.9	2.00	1.96	-1.28
1,160.0	18.33	320.19	1,143.9	127.6	-79.1	148.2	2.00	1.97	-1.17
1,200.0	19.11	319.76	1,181.8	137.4	-87.4	161.0	2.00	1.97	-1.08
1,240.0	19.90	319.36	1,219.5	147.6	-96.0	174.4	2.00	1.97	-1.00
1,280.0	20.69	318.99	1,257.0	158.1	-105.1	188.2	2.00	1.97	-0.92
1,320.0	21.48	318.65	1,294.3	168.9	-114.6	202.6	2.00	1.98	-0.86
1,360.0	22.27	318.33	1,331.4	180.0	-124.5	217.5	2.00	1.98	-0.80
1,381.2	22.69	318.17	1,351.0	186.1	-129.9	225.7	2.00	1.98	-0.76
1,400.0	22.69	318.17	1,368.4	191.5	-134.7	232.9	0.00	0.00	0.00
1,440.0	22.69	318.17	1,405.3	203.0	-145.0	248.3	0.00	0.00	0.00
1,480.0	22.69	318.17	1,442.2	214.5	-155.3	263.8	0.00	0.00	0.00
1,520.0	22.69	318.17	1,479.1	226.0	-165.6	279.2	0.00	0.00	0.00
1,560.0	22.69	318.17	1,516.0	237.5	-175.9	294.6	0.00	0.00	0.00
1,600.0	22.69	318.17	1,552.9	249.0	-186.2	310.1	0.00	0.00	0.00
1,640.0	22.69	318.17	1,589.8	260.5	-196.5	325.5	0.00	0.00	0.00
1,680.0	22.69	318.17	1,626.7	272.0	-206.8	340.9	0.00	0.00	0.00
1,720.0	22.69	318.17	1,663.6	283.5	-217.0	356.4	0.00	0.00	0.00
1,760.0	22.69	318.17	1,700.5	295.0	-227.3	371.8	0.00	0.00	0.00
1,800.0	22.69	318.17	1,737.4	306.5	-237.6	387.2	0.00	0.00	0.00
1,840.0	22.69	318.17	1,774.3	318.0	-247.9	402.6	0.00	0.00	0.00
1,880.0	22.69	318.17	1,811.2	329.5	-258.2	418.1	0.00	0.00	0.00
1,920.0	22.69	318.17	1,848.1	341.0	-268.5	433.5	0.00	0.00	0.00
1,960.0	22.69	318.17	1,885.0	352.5	-278.8	448.9	0.00	0.00	0.00

<b>Database:</b>	Landmark	<b>Local Co-ordinate Reference:</b>	Well Wind 17-13
<b>Company:</b>	Trilogy Resources, LLC. Weld County, CO	<b>TVD Reference:</b>	WELL @ 4853.0ft (RKB - 13')
<b>Project:</b>	SEC.17-T4N-R67W	<b>MD Reference:</b>	WELL @ 4853.0ft (RKB - 13')
<b>Site:</b>	Wind 17-14 Pad Sec.17-T4N-R67W	<b>North Reference:</b>	True
<b>Well:</b>	Wind 17-13	<b>Survey Calculation Method:</b>	Minimum Curvature
<b>Wellbore:</b>	Wellbore #1		
<b>Design:</b>	Plan #1 (11-19-12)		

Planned Survey									
Measured Depth (ft)	Inclination (°)	Azimuth (°)	Vertical Depth (ft)	+N/-S (ft)	+E/-W (ft)	Vertical Section (ft)	Dogleg Rate (°/100ft)	Build Rate (°/100ft)	Turn Rate (°/100ft)
2,000.0	22.69	318.17	1,921.9	364.0	-289.1	464.4	0.00	0.00	0.00
2,040.0	22.69	318.17	1,958.8	375.5	-299.4	479.8	0.00	0.00	0.00
2,080.0	22.69	318.17	1,995.7	387.0	-309.7	495.2	0.00	0.00	0.00
2,120.0	22.69	318.17	2,032.6	398.5	-320.0	510.7	0.00	0.00	0.00
2,160.0	22.69	318.17	2,069.5	410.0	-330.3	526.1	0.00	0.00	0.00
2,200.0	22.69	318.17	2,106.4	421.5	-340.6	541.5	0.00	0.00	0.00
2,240.0	22.69	318.17	2,143.3	433.0	-350.8	557.0	0.00	0.00	0.00
2,280.0	22.69	318.17	2,180.2	444.5	-361.1	572.4	0.00	0.00	0.00
2,320.0	22.69	318.17	2,217.1	456.0	-371.4	587.8	0.00	0.00	0.00
2,360.0	22.69	318.17	2,254.0	467.5	-381.7	603.3	0.00	0.00	0.00
2,400.0	22.69	318.17	2,290.9	479.0	-392.0	618.7	0.00	0.00	0.00
2,440.0	22.69	318.17	2,327.8	490.5	-402.3	634.1	0.00	0.00	0.00
2,480.0	22.69	318.17	2,364.7	502.0	-412.6	649.5	0.00	0.00	0.00
2,520.0	22.69	318.17	2,401.6	513.5	-422.9	665.0	0.00	0.00	0.00
2,560.0	22.69	318.17	2,438.5	525.0	-433.2	680.4	0.00	0.00	0.00
2,600.0	22.69	318.17	2,475.4	536.5	-443.5	695.8	0.00	0.00	0.00
2,640.0	22.69	318.17	2,512.3	548.0	-453.8	711.3	0.00	0.00	0.00
2,680.0	22.69	318.17	2,549.3	559.5	-464.1	726.7	0.00	0.00	0.00
2,720.0	22.69	318.17	2,586.2	571.0	-474.4	742.1	0.00	0.00	0.00
2,760.0	22.69	318.17	2,623.1	582.5	-484.6	757.6	0.00	0.00	0.00
2,800.0	22.69	318.17	2,660.0	594.0	-494.9	773.0	0.00	0.00	0.00
2,840.0	22.69	318.17	2,696.9	605.5	-505.2	788.4	0.00	0.00	0.00
2,880.0	22.69	318.17	2,733.8	617.0	-515.5	803.9	0.00	0.00	0.00
2,920.0	22.69	318.17	2,770.7	628.5	-525.8	819.3	0.00	0.00	0.00
2,960.0	22.69	318.17	2,807.6	640.0	-536.1	834.7	0.00	0.00	0.00
3,000.0	22.69	318.17	2,844.5	651.5	-546.4	850.2	0.00	0.00	0.00
3,040.0	22.69	318.17	2,881.4	663.0	-556.7	865.6	0.00	0.00	0.00
3,080.0	22.69	318.17	2,918.3	674.5	-567.0	881.0	0.00	0.00	0.00
3,120.0	22.69	318.17	2,955.2	686.0	-577.3	896.4	0.00	0.00	0.00
3,160.0	22.69	318.17	2,992.1	697.5	-587.6	911.9	0.00	0.00	0.00
3,200.0	22.69	318.17	3,029.0	709.0	-597.9	927.3	0.00	0.00	0.00
3,240.0	22.69	318.17	3,065.9	720.5	-608.2	942.7	0.00	0.00	0.00
3,280.0	22.69	318.17	3,102.8	732.0	-618.4	958.2	0.00	0.00	0.00
3,320.0	22.69	318.17	3,139.7	743.5	-628.7	973.6	0.00	0.00	0.00
3,360.0	22.69	318.17	3,176.6	755.0	-639.0	989.0	0.00	0.00	0.00
3,400.0	22.69	318.17	3,213.5	766.5	-649.3	1,004.5	0.00	0.00	0.00
3,440.0	22.69	318.17	3,250.4	778.0	-659.6	1,019.9	0.00	0.00	0.00
3,480.0	22.69	318.17	3,287.3	789.5	-669.9	1,035.3	0.00	0.00	0.00
3,520.0	22.69	318.17	3,324.2	801.0	-680.2	1,050.8	0.00	0.00	0.00
3,524.1	22.69	318.17	3,328.0	802.2	-681.3	1,052.3	0.00	0.00	0.00
<b>PARKMAN</b>									
3,560.0	22.69	318.17	3,361.1	812.5	-690.5	1,066.2	0.00	0.00	0.00
3,600.0	22.69	318.17	3,398.0	824.0	-700.8	1,081.6	0.00	0.00	0.00
3,640.0	22.69	318.17	3,434.9	835.5	-711.1	1,097.1	0.00	0.00	0.00
3,680.0	22.69	318.17	3,471.8	847.0	-721.4	1,112.5	0.00	0.00	0.00
3,720.0	22.69	318.17	3,508.7	858.5	-731.7	1,127.9	0.00	0.00	0.00
3,760.0	22.69	318.17	3,545.6	870.0	-742.0	1,143.3	0.00	0.00	0.00
3,800.0	22.69	318.17	3,582.5	881.5	-752.3	1,158.8	0.00	0.00	0.00
3,840.0	22.69	318.17	3,619.4	893.0	-762.5	1,174.2	0.00	0.00	0.00
3,880.0	22.69	318.17	3,656.3	904.5	-772.8	1,189.6	0.00	0.00	0.00
3,920.0	22.69	318.17	3,693.2	916.0	-783.1	1,205.1	0.00	0.00	0.00
3,960.0	22.69	318.17	3,730.1	927.5	-793.4	1,220.5	0.00	0.00	0.00
4,000.0	22.69	318.17	3,767.0	939.0	-803.7	1,235.9	0.00	0.00	0.00

<b>Database:</b>	Landmark	<b>Local Co-ordinate Reference:</b>	Well Wind 17-13
<b>Company:</b>	Trilogy Resources, LLC. Weld County, CO	<b>TVD Reference:</b>	WELL @ 4853.0ft (RKB - 13')
<b>Project:</b>	SEC.17-T4N-R67W	<b>MD Reference:</b>	WELL @ 4853.0ft (RKB - 13')
<b>Site:</b>	Wind 17-14 Pad Sec.17-T4N-R67W	<b>North Reference:</b>	True
<b>Well:</b>	Wind 17-13	<b>Survey Calculation Method:</b>	Minimum Curvature
<b>Wellbore:</b>	Wellbore #1		
<b>Design:</b>	Plan #1 (11-19-12)		

Planned Survey									
Measured Depth (ft)	Inclination (°)	Azimuth (°)	Vertical Depth (ft)	+N/-S (ft)	+E/-W (ft)	Vertical Section (ft)	Dogleg Rate (°/100ft)	Build Rate (°/100ft)	Turn Rate (°/100ft)
4,040.0	22.69	318.17	3,804.0	950.5	-814.0	1,251.4	0.00	0.00	0.00
4,080.0	22.69	318.17	3,840.9	962.0	-824.3	1,266.8	0.00	0.00	0.00
4,120.0	22.69	318.17	3,877.8	973.5	-834.6	1,282.2	0.00	0.00	0.00
4,160.0	22.69	318.17	3,914.7	985.0	-844.9	1,297.7	0.00	0.00	0.00
4,200.0	22.69	318.17	3,951.6	996.5	-855.2	1,313.1	0.00	0.00	0.00
4,240.0	22.69	318.17	3,988.5	1,008.0	-865.5	1,328.5	0.00	0.00	0.00
4,280.0	22.69	318.17	4,025.4	1,019.5	-875.8	1,344.0	0.00	0.00	0.00
4,282.9	22.69	318.17	4,028.0	1,020.3	-876.5	1,345.1	0.00	0.00	0.00
<b>SUSSEX</b>									
4,320.0	22.69	318.17	4,062.3	1,031.0	-886.1	1,359.4	0.00	0.00	0.00
4,360.0	22.69	318.17	4,099.2	1,042.5	-896.3	1,374.8	0.00	0.00	0.00
4,400.0	22.69	318.17	4,136.1	1,054.0	-906.6	1,390.2	0.00	0.00	0.00
4,440.0	22.69	318.17	4,173.0	1,065.5	-916.9	1,405.7	0.00	0.00	0.00
4,480.0	22.69	318.17	4,209.9	1,077.0	-927.2	1,421.1	0.00	0.00	0.00
4,520.0	22.69	318.17	4,246.8	1,088.5	-937.5	1,436.5	0.00	0.00	0.00
4,560.0	22.69	318.17	4,283.7	1,100.0	-947.8	1,452.0	0.00	0.00	0.00
4,600.0	22.69	318.17	4,320.6	1,111.5	-958.1	1,467.4	0.00	0.00	0.00
4,640.0	22.69	318.17	4,357.5	1,123.0	-968.4	1,482.8	0.00	0.00	0.00
4,680.0	22.69	318.17	4,394.4	1,134.5	-978.7	1,498.3	0.00	0.00	0.00
4,694.7	22.69	318.17	4,408.0	1,138.7	-982.5	1,504.0	0.00	0.00	0.00
<b>SHANNON</b>									
4,720.0	22.69	318.17	4,431.3	1,146.0	-989.0	1,513.7	0.00	0.00	0.00
4,760.0	22.69	318.17	4,468.2	1,157.5	-999.3	1,529.1	0.00	0.00	0.00
4,800.0	22.69	318.17	4,505.1	1,169.0	-1,009.6	1,544.6	0.00	0.00	0.00
4,840.0	22.69	318.17	4,542.0	1,180.5	-1,019.9	1,560.0	0.00	0.00	0.00
4,880.0	22.69	318.17	4,578.9	1,192.0	-1,030.1	1,575.4	0.00	0.00	0.00
4,920.0	22.69	318.17	4,615.8	1,203.5	-1,040.4	1,590.9	0.00	0.00	0.00
4,960.0	22.69	318.17	4,652.7	1,215.0	-1,050.7	1,606.3	0.00	0.00	0.00
5,000.0	22.69	318.17	4,689.6	1,226.5	-1,061.0	1,621.7	0.00	0.00	0.00
5,040.0	22.69	318.17	4,726.5	1,238.0	-1,071.3	1,637.1	0.00	0.00	0.00
5,080.0	22.69	318.17	4,763.4	1,249.5	-1,081.6	1,652.6	0.00	0.00	0.00
5,113.9	22.69	318.17	4,794.7	1,259.2	-1,090.3	1,665.7	0.00	0.00	0.00
5,120.0	22.57	318.17	4,800.3	1,261.0	-1,091.9	1,668.0	2.00	-2.00	0.00
5,160.0	21.77	318.17	4,837.4	1,272.2	-1,102.0	1,683.1	2.00	-2.00	0.00
5,200.0	20.97	318.17	4,874.6	1,283.1	-1,111.7	1,697.7	2.00	-2.00	0.00
5,240.0	20.17	318.17	4,912.1	1,293.5	-1,121.1	1,711.7	2.00	-2.00	0.00
5,280.0	19.37	318.17	4,949.7	1,303.6	-1,130.1	1,725.3	2.00	-2.00	0.00
5,320.0	18.57	318.17	4,987.5	1,313.3	-1,138.8	1,738.3	2.00	-2.00	0.00
5,360.0	17.77	318.17	5,025.5	1,322.6	-1,147.1	1,750.7	2.00	-2.00	0.00
5,400.0	16.97	318.17	5,063.7	1,331.5	-1,155.0	1,762.7	2.00	-2.00	0.00
5,440.0	16.17	318.17	5,102.1	1,340.0	-1,162.7	1,774.1	2.00	-2.00	0.00
5,480.0	15.37	318.17	5,140.6	1,348.1	-1,169.9	1,785.0	2.00	-2.00	0.00
5,520.0	14.57	318.17	5,179.2	1,355.8	-1,176.8	1,795.3	2.00	-2.00	0.00
5,560.0	13.77	318.17	5,218.0	1,363.1	-1,183.3	1,805.1	2.00	-2.00	0.00
5,600.0	12.97	318.17	5,256.9	1,370.0	-1,189.5	1,814.3	2.00	-2.00	0.00
5,640.0	12.17	318.17	5,295.9	1,376.5	-1,195.3	1,823.0	2.00	-2.00	0.00
5,680.0	11.37	318.17	5,335.1	1,382.6	-1,200.7	1,831.2	2.00	-2.00	0.00
5,720.0	10.57	318.17	5,374.4	1,388.2	-1,205.8	1,838.8	2.00	-2.00	0.00
5,760.0	9.77	318.17	5,413.7	1,393.5	-1,210.5	1,845.9	2.00	-2.00	0.00
5,800.0	8.97	318.17	5,453.2	1,398.4	-1,214.9	1,852.4	2.00	-2.00	0.00
5,840.0	8.17	318.17	5,492.7	1,402.8	-1,218.9	1,858.3	2.00	-2.00	0.00
5,880.0	7.37	318.17	5,532.4	1,406.8	-1,222.5	1,863.8	2.00	-2.00	0.00
5,920.0	6.57	318.17	5,572.1	1,410.5	-1,225.7	1,868.6	2.00	-2.00	0.00
5,960.0	5.77	318.17	5,611.9	1,413.7	-1,228.6	1,872.9	2.00	-2.00	0.00

<b>Database:</b>	Landmark	<b>Local Co-ordinate Reference:</b>	Well Wind 17-13
<b>Company:</b>	Trilogy Resources, LLC. Weld County, CO	<b>TVD Reference:</b>	WELL @ 4853.0ft (RKB - 13')
<b>Project:</b>	SEC.17-T4N-R67W	<b>MD Reference:</b>	WELL @ 4853.0ft (RKB - 13')
<b>Site:</b>	Wind 17-14 Pad Sec.17-T4N-R67W	<b>North Reference:</b>	True
<b>Well:</b>	Wind 17-13	<b>Survey Calculation Method:</b>	Minimum Curvature
<b>Wellbore:</b>	Wellbore #1		
<b>Design:</b>	Plan #1 (11-19-12)		

Planned Survey									
Measured Depth (ft)	Inclination (°)	Azimuth (°)	Vertical Depth (ft)	+N/-S (ft)	+E/-W (ft)	Vertical Section (ft)	Dogleg Rate (°/100ft)	Build Rate (°/100ft)	Turn Rate (°/100ft)
6,000.0	4.97	318.17	5,651.7	1,416.4	-1,231.1	1,876.7	2.00	-2.00	0.00
6,040.0	4.17	318.17	5,691.5	1,418.8	-1,233.2	1,879.8	2.00	-2.00	0.00
6,080.0	3.37	318.17	5,731.5	1,420.8	-1,234.9	1,882.5	2.00	-2.00	0.00
6,120.0	2.57	318.17	5,771.4	1,422.3	-1,236.3	1,884.6	2.00	-2.00	0.00
6,160.0	1.77	318.17	5,811.4	1,423.5	-1,237.3	1,886.1	2.00	-2.00	0.00
6,200.0	0.97	318.17	5,851.4	1,424.2	-1,238.0	1,887.0	2.00	-2.00	0.00
6,240.0	0.17	318.17	5,891.4	1,424.5	-1,238.3	1,887.4	2.00	-2.00	0.00
6,248.6	0.00	0.00	5,900.0	1,424.5	-1,238.3	1,887.4	2.00	-2.00	0.00
TARGET BHL 1979'FSL & 612'FWL									
6,280.0	0.00	0.00	5,931.4	1,424.5	-1,238.3	1,887.4	0.00	0.00	0.00
6,320.0	0.00	0.00	5,971.4	1,424.5	-1,238.3	1,887.4	0.00	0.00	0.00
6,360.0	0.00	0.00	6,011.4	1,424.5	-1,238.3	1,887.4	0.00	0.00	0.00
6,400.0	0.00	0.00	6,051.4	1,424.5	-1,238.3	1,887.4	0.00	0.00	0.00
6,440.0	0.00	0.00	6,091.4	1,424.5	-1,238.3	1,887.4	0.00	0.00	0.00
6,480.0	0.00	0.00	6,131.4	1,424.5	-1,238.3	1,887.4	0.00	0.00	0.00
6,520.0	0.00	0.00	6,171.4	1,424.5	-1,238.3	1,887.4	0.00	0.00	0.00
6,560.0	0.00	0.00	6,211.4	1,424.5	-1,238.3	1,887.4	0.00	0.00	0.00
6,600.0	0.00	0.00	6,251.4	1,424.5	-1,238.3	1,887.4	0.00	0.00	0.00
6,640.0	0.00	0.00	6,291.4	1,424.5	-1,238.3	1,887.4	0.00	0.00	0.00
6,680.0	0.00	0.00	6,331.4	1,424.5	-1,238.3	1,887.4	0.00	0.00	0.00
6,720.0	0.00	0.00	6,371.4	1,424.5	-1,238.3	1,887.4	0.00	0.00	0.00
6,760.0	0.00	0.00	6,411.4	1,424.5	-1,238.3	1,887.4	0.00	0.00	0.00
6,800.0	0.00	0.00	6,451.4	1,424.5	-1,238.3	1,887.4	0.00	0.00	0.00
6,840.0	0.00	0.00	6,491.4	1,424.5	-1,238.3	1,887.4	0.00	0.00	0.00
6,880.0	0.00	0.00	6,531.4	1,424.5	-1,238.3	1,887.4	0.00	0.00	0.00
6,920.0	0.00	0.00	6,571.4	1,424.5	-1,238.3	1,887.4	0.00	0.00	0.00
6,960.0	0.00	0.00	6,611.4	1,424.5	-1,238.3	1,887.4	0.00	0.00	0.00
7,000.0	0.00	0.00	6,651.4	1,424.5	-1,238.3	1,887.4	0.00	0.00	0.00
7,040.0	0.00	0.00	6,691.4	1,424.5	-1,238.3	1,887.4	0.00	0.00	0.00
7,080.0	0.00	0.00	6,731.4	1,424.5	-1,238.3	1,887.4	0.00	0.00	0.00
7,106.6	0.00	0.00	6,758.0	1,424.5	-1,238.3	1,887.4	0.00	0.00	0.00
NIOBRARA - TARGET CIRCLE 1979'FSL & 612'FWL - LEGAL BOX 400' X 400', 1985'FSL & 612'FWL									
7,120.0	0.00	0.00	6,771.4	1,424.5	-1,238.3	1,887.4	0.00	0.00	0.00
7,160.0	0.00	0.00	6,811.4	1,424.5	-1,238.3	1,887.4	0.00	0.00	0.00
7,200.0	0.00	0.00	6,851.4	1,424.5	-1,238.3	1,887.4	0.00	0.00	0.00
7,240.0	0.00	0.00	6,891.4	1,424.5	-1,238.3	1,887.4	0.00	0.00	0.00
7,280.0	0.00	0.00	6,931.4	1,424.5	-1,238.3	1,887.4	0.00	0.00	0.00
7,320.0	0.00	0.00	6,971.4	1,424.5	-1,238.3	1,887.4	0.00	0.00	0.00
7,360.0	0.00	0.00	7,011.4	1,424.5	-1,238.3	1,887.4	0.00	0.00	0.00
7,400.0	0.00	0.00	7,051.4	1,424.5	-1,238.3	1,887.4	0.00	0.00	0.00
7,409.6	0.00	0.00	7,061.0	1,424.5	-1,238.3	1,887.4	0.00	0.00	0.00
FT HAYS									
7,431.6	0.00	0.00	7,083.0	1,424.5	-1,238.3	1,887.4	0.00	0.00	0.00
CODELL									
7,440.0	0.00	0.00	7,091.4	1,424.5	-1,238.3	1,887.4	0.00	0.00	0.00
7,480.0	0.00	0.00	7,131.4	1,424.5	-1,238.3	1,887.4	0.00	0.00	0.00
7,520.0	0.00	0.00	7,171.4	1,424.5	-1,238.3	1,887.4	0.00	0.00	0.00
7,560.0	0.00	0.00	7,211.4	1,424.5	-1,238.3	1,887.4	0.00	0.00	0.00
7,600.0	0.00	0.00	7,251.4	1,424.5	-1,238.3	1,887.4	0.00	0.00	0.00
7,640.0	0.00	0.00	7,291.4	1,424.5	-1,238.3	1,887.4	0.00	0.00	0.00
7,663.6	0.00	0.00	7,315.0	1,424.5	-1,238.3	1,887.4	0.00	0.00	0.00

<b>Database:</b>	Landmark	<b>Local Co-ordinate Reference:</b>	Well Wind 17-13
<b>Company:</b>	Trilogy Resources, LLC. Weld County, CO	<b>TVD Reference:</b>	WELL @ 4853.0ft (RKB - 13')
<b>Project:</b>	SEC.17-T4N-R67W	<b>MD Reference:</b>	WELL @ 4853.0ft (RKB - 13')
<b>Site:</b>	Wind 17-14 Pad Sec.17-T4N-R67W	<b>North Reference:</b>	True
<b>Well:</b>	Wind 17-13	<b>Survey Calculation Method:</b>	Minimum Curvature
<b>Wellbore:</b>	Wellbore #1		
<b>Design:</b>	Plan #1 (11-19-12)		

Targets									
Target Name	- hit/miss target	Dip Angle (°)	Dip Dir. (°)	TVD (ft)	+N/-S (ft)	+E/-W (ft)	Northing (ft)	Easting (ft)	
- Shape									Latitude Longitude
TARGET CIRCLE 197'	- plan hits target center	0.00	0.00	6,758.0	1,424.5	-1,238.3	1,356,774.49	3,161,433.87	40.311300 -104.921120
- Circle (radius 75.0)									
TARGET BHL 1979'F	- plan hits target center	0.00	0.00	5,900.0	1,424.5	-1,238.3	1,356,774.49	3,161,433.87	40.311300 -104.921120
- Point									
LEGAL BOX 400' X 400'	- plan misses target center by 6.0ft at 7106.6ft MD (6758.0 TVD, 1424.5 N, -1238.3 E)	0.00	0.00	6,758.0	1,430.5	-1,238.3	1,356,780.51	3,161,433.79	40.311317 -104.921120
- Rectangle (sides W400.0 H400.0 D557.0)									

Casing Points					
Measured Depth (ft)	Vertical Depth (ft)	Name	Casing Diameter (")	Hole Diameter (")	
702.3	700.0	8 5/8"	8-5/8	12-1/4	

Formations						
Measured Depth (ft)	Vertical Depth (ft)	Name	Lithology	Dip (°)	Dip Direction (°)	
3,524.1	3,328.0	PARKMAN		0.00		
4,282.9	4,028.0	SUSSEX		0.00		
4,694.7	4,408.0	SHANNON		0.00		
7,106.6	6,758.0	NIOBRARA		0.00		
7,409.6	7,061.0	FT HAYS		0.00		
7,431.6	7,083.0	CODELL		0.00		



# **Trilogy Resources, LLC. Weld County, CO**

**SEC.17-T4N-R67W**

**Wind 17-14 Pad Sec.17-T4N-R67W**

**Wind 17-13**

**Wellbore #1**

**Plan #1 (11-19-12)**

## **Anticollision Report**

**20 November, 2012**

<b>Company:</b>	Trilogy Resources, LLC. Weld County, CO	<b>Local Co-ordinate Reference:</b>	Well Wind 17-13
<b>Project:</b>	SEC.17-T4N-R67W	<b>TVD Reference:</b>	WELL @ 4853.0ft (RKB - 13')
<b>Reference Site:</b>	Wind 17-14 Pad Sec.17-T4N-R67W	<b>MD Reference:</b>	WELL @ 4853.0ft (RKB - 13')
<b>Site Error:</b>	0.0ft	<b>North Reference:</b>	True
<b>Reference Well:</b>	Wind 17-13	<b>Survey Calculation Method:</b>	Minimum Curvature
<b>Well Error:</b>	0.0ft	<b>Output errors are at</b>	2.00 sigma
<b>Reference Wellbore</b>	Wellbore #1	<b>Database:</b>	Landmark
<b>Reference Design:</b>	Plan #1 (11-19-12)	<b>Offset TVD Reference:</b>	Offset Datum

<b>Reference</b>	Plan #1 (11-19-12)		
<b>Filter type:</b>	NO GLOBAL FILTER: Using user defined selection & filtering criteria		
<b>Interpolation Method:</b>	Stations	<b>Error Model:</b>	ISCWSA
<b>Depth Range:</b>	Unlimited	<b>Scan Method:</b>	Closest Approach 3D
<b>Results Limited by:</b>	Maximum center-center distance of 10,000.0ft	<b>Error Surface:</b>	Elliptical Conic
<b>Warning Levels Evaluated at:</b>	2.00 Sigma		

<b>Survey Tool Program</b>	<b>Date</b> 11/20/2012			
<b>From (ft)</b>	<b>To (ft)</b>	<b>Survey (Wellbore)</b>	<b>Tool Name</b>	<b>Description</b>
0.0	7,663.6	Plan #1 (11-19-12) (Wellbore #1)	MWD	MWD - Standard

<b>Summary</b>						
<b>Site Name</b>	<b>Reference Measured Depth (ft)</b>	<b>Offset Measured Depth (ft)</b>	<b>Distance Between Centres (ft)</b>	<b>Distance Between Ellipses (ft)</b>	<b>Separation Factor</b>	<b>Warning</b>
<b>Offset Well - Wellbore - Design</b>						
Wind 17-14 Pad Sec.17-T4N-R67W						
Wind 17-14 - Wellbore #1 - Plan #1 (11-19-12)	339.4	338.3	19.2	17.9	14.783	CC, ES
Wind 17-14 - Wellbore #1 - Plan #1 (11-19-12)	500.0	498.5	22.5	20.5	10.997	SF
Wind 17-23 - Wellbore #1 - Plan #1 (11-19-12)	200.0	201.0	39.0	38.4	57.714	CC
Wind 17-23 - Wellbore #1 - Plan #1 (11-19-12)	300.0	301.0	39.4	38.3	34.981	ES
Wind 17-23 - Wellbore #1 - Plan #1 (11-19-12)	7,664.6	7,537.5	1,221.9	1,159.8	19.674	SF

<b>Offset Design</b> Wind 17-14 Pad Sec.17-T4N-R67W - Wind 17-14 - Wellbore #1 - Plan #1 (11-19-12)													<b>Offset Site Error:</b>	0.0ft
Survey Program: 0-MWD													<b>Offset Well Error:</b>	0.0ft
<b>Reference Measured Depth (ft)</b>	<b>Vertical Depth (ft)</b>	<b>Offset Measured Depth (ft)</b>	<b>Vertical Depth (ft)</b>	<b>Semi Major Axis Reference (ft)</b>	<b>Offset (ft)</b>	<b>Highside Toolface (°)</b>	<b>Offset Wellbore Centre +N/-S (ft)</b>	<b>+E/-W (ft)</b>	<b>Distance Between Centres (ft)</b>	<b>Distance Between Ellipses (ft)</b>	<b>Minimum Separation (ft)</b>	<b>Separation Factor</b>	<b>Warning</b>	
0.0	0.0	0.0	0.0	0.0	0.0	-90.00	0.0	-19.5	19.5	19.5	0.00	N/A		
100.0	100.0	99.0	99.0	0.1	0.1	-90.00	0.0	-19.5	19.5	19.3	0.22	87.296		
200.0	200.0	199.0	199.0	0.3	0.3	-90.00	0.0	-19.5	19.5	18.9	0.67	29.050		
300.0	300.0	299.0	299.0	0.6	0.6	-85.11	0.0	-19.5	19.3	18.2	1.12	17.211		
339.4	339.3	338.3	338.3	0.7	0.6	-90.00	0.0	-19.5	19.2	17.9	1.30	14.783	CC, ES	
400.0	399.8	398.8	398.8	0.8	0.8	-100.55	0.0	-19.5	19.6	18.0	1.58	12.398		
450.0	449.7	448.7	448.7	0.9	0.9	-111.27	0.0	-19.5	20.6	18.8	1.81	11.384		
500.0	499.5	498.5	498.5	1.0	1.0	-116.35	0.0	-19.5	22.5	20.5	2.05	10.997	SF	
600.0	598.8	597.8	597.8	1.3	1.2	-129.73	0.0	-19.5	28.9	26.4	2.52	11.464		
700.0	697.7	696.7	696.7	1.6	1.5	-141.70	0.0	-19.5	39.6	36.6	2.99	13.237		
800.0	796.0	795.0	795.0	2.0	1.7	-150.29	0.0	-19.5	54.6	51.2	3.45	15.811		
900.0	893.8	892.8	892.8	2.4	1.9	-156.16	0.0	-19.5	73.7	69.8	3.92	18.817		
1,000.0	990.7	989.7	989.7	2.9	2.1	-160.23	0.0	-19.5	96.6	92.2	4.38	22.050		
1,100.0	1,086.7	1,085.7	1,085.7	3.4	2.3	-163.13	0.0	-19.5	123.2	118.3	4.85	25.402		
1,200.0	1,181.8	1,183.0	1,183.0	4.0	2.5	-164.94	0.1	-20.7	152.6	147.3	5.31	28.723		
1,300.0	1,275.7	1,281.0	1,280.9	4.6	2.7	-165.50	0.5	-25.2	183.7	177.9	5.78	31.762		
1,381.2	1,351.0	1,360.8	1,360.5	5.2	2.9	-165.39	1.0	-31.3	209.9	203.7	6.18	33.949		
1,400.0	1,368.4	1,379.3	1,378.9	5.4	3.0	-165.49	1.2	-33.1	216.1	209.8	6.28	34.386		
1,500.0	1,460.6	1,478.6	1,477.5	6.1	3.2	-165.51	2.2	-44.4	247.7	240.8	6.84	36.185		
1,600.0	1,552.9	1,579.0	1,576.8	6.9	3.5	-164.89	3.5	-59.3	277.5	270.0	7.46	37.204		
1,700.0	1,645.1	1,680.4	1,676.4	7.7	3.8	-163.81	5.1	-77.9	305.5	297.4	8.14	37.541		
1,800.0	1,737.4	1,782.4	1,776.0	8.4	4.1	-162.36	7.0	-100.1	331.9	323.0	8.90	37.286		

CC - Min centre to center distance or convergent point, SF - min separation factor, ES - min ellipse separation

<b>Company:</b>	Trilogy Resources, LLC. Weld County, CO	<b>Local Co-ordinate Reference:</b>	Well Wind 17-13
<b>Project:</b>	SEC.17-T4N-R67W	<b>TVD Reference:</b>	WELL @ 4853.0ft (RKB - 13')
<b>Reference Site:</b>	Wind 17-14 Pad Sec.17-T4N-R67W	<b>MD Reference:</b>	WELL @ 4853.0ft (RKB - 13')
<b>Site Error:</b>	0.0ft	<b>North Reference:</b>	True
<b>Reference Well:</b>	Wind 17-13	<b>Survey Calculation Method:</b>	Minimum Curvature
<b>Well Error:</b>	0.0ft	<b>Output errors are at</b>	2.00 sigma
<b>Reference Wellbore</b>	Wellbore #1	<b>Database:</b>	Landmark
<b>Reference Design:</b>	Plan #1 (11-19-12)	<b>Offset TVD Reference:</b>	Offset Datum

Offset Design Wind 17-14 Pad Sec.17-T4N-R67W - Wind 17-14 - Wellbore #1 - Plan #1 (11-19-12)												Offset Site Error:	0.0ft
Survey Program: 0-MWD												Offset Well Error:	0.0ft
Reference		Offset		Semi Major Axis			Distance						Warning
Measured Depth (ft)	Vertical Depth (ft)	Measured Depth (ft)	Vertical Depth (ft)	Reference (ft)	Offset (ft)	Highside Toolface (°)	Offset Wellbore Centre +N/-S (ft)	+E/-W (ft)	Between Centres (ft)	Between Ellipses (ft)	Minimum Separation (ft)	Separation Factor	
1,900.0	1,829.6	1,884.9	1,875.1	9.2	4.5	-160.60	9.3	-126.0	356.8	347.0	9.77	36.531	
2,000.0	1,921.9	1,985.1	1,971.2	10.0	5.0	-158.66	11.8	-154.4	380.4	369.7	10.73	35.459	
2,100.0	2,014.2	2,081.6	2,063.4	10.8	5.5	-156.92	14.2	-182.5	404.1	392.4	11.74	34.423	
2,200.0	2,106.4	2,178.0	2,155.7	11.6	6.0	-155.38	16.7	-210.5	428.2	415.4	12.79	33.463	
2,300.0	2,198.7	2,274.5	2,247.9	12.4	6.5	-154.00	19.1	-238.5	452.4	438.6	13.88	32.596	
2,400.0	2,290.9	2,370.9	2,340.2	13.2	7.1	-152.76	21.6	-266.6	477.0	462.0	14.99	31.815	
2,500.0	2,383.2	2,467.4	2,432.4	14.0	7.6	-151.64	24.0	-294.6	501.7	485.5	16.12	31.114	
2,600.0	2,475.4	2,563.8	2,524.7	14.8	8.2	-150.63	26.5	-322.6	526.5	509.3	17.27	30.485	
2,700.0	2,567.7	2,660.3	2,617.0	15.6	8.7	-149.70	28.9	-350.7	551.6	533.1	18.43	29.921	
2,800.0	2,660.0	2,756.7	2,709.2	16.3	9.3	-148.86	31.4	-378.7	576.7	557.1	19.61	29.413	
2,900.0	2,752.2	2,853.2	2,801.5	17.1	9.9	-148.09	33.8	-406.7	601.9	581.2	20.79	28.956	
3,000.0	2,844.5	2,949.6	2,893.7	17.9	10.4	-147.37	36.3	-434.8	627.3	605.3	21.98	28.542	
3,100.0	2,936.7	3,046.1	2,986.0	18.7	11.0	-146.72	38.7	-462.8	652.7	629.5	23.17	28.167	
3,200.0	3,029.0	3,142.5	3,078.2	19.5	11.6	-146.11	41.2	-490.8	678.2	653.8	24.37	27.825	
3,300.0	3,121.2	3,239.0	3,170.5	20.3	12.2	-145.55	43.6	-518.9	703.8	678.2	25.58	27.514	
3,400.0	3,213.5	3,335.4	3,262.7	21.1	12.8	-145.02	46.1	-546.9	729.4	702.6	26.79	27.229	
3,500.0	3,305.8	3,431.9	3,355.0	21.9	13.4	-144.53	48.5	-575.0	755.1	727.1	28.00	26.967	
3,600.0	3,398.0	3,528.3	3,447.3	22.7	13.9	-144.08	50.9	-603.0	780.8	751.6	29.22	26.726	
3,700.0	3,490.3	3,624.8	3,539.5	23.5	14.5	-143.65	53.4	-631.0	806.6	776.1	30.43	26.504	
3,800.0	3,582.5	3,721.2	3,631.8	24.3	15.1	-143.25	55.8	-659.1	832.4	800.7	31.65	26.298	
3,900.0	3,674.8	3,817.7	3,724.0	25.1	15.7	-142.87	58.3	-687.1	858.2	825.4	32.87	26.107	
4,000.0	3,767.0	3,914.2	3,816.3	25.9	16.3	-142.51	60.7	-715.1	884.1	850.0	34.10	25.930	
4,100.0	3,859.3	4,010.6	3,908.5	26.7	16.9	-142.18	63.2	-743.2	910.0	874.7	35.32	25.765	
4,200.0	3,951.6	4,107.1	4,000.8	27.5	17.5	-141.86	65.6	-771.2	936.0	899.4	36.55	25.611	
4,300.0	4,043.8	4,203.5	4,093.0	28.3	18.1	-141.56	68.1	-799.2	961.9	924.1	37.77	25.467	
4,400.0	4,136.1	4,300.0	4,185.3	29.1	18.7	-141.28	70.5	-827.3	987.9	948.9	39.00	25.331	
4,500.0	4,228.3	4,396.4	4,277.5	29.9	19.3	-141.01	73.0	-855.3	1,013.9	973.7	40.23	25.204	
4,600.0	4,320.6	4,492.9	4,369.8	30.7	19.9	-140.75	75.4	-883.3	1,039.9	998.5	41.46	25.085	
4,700.0	4,412.9	4,589.3	4,462.1	31.5	20.5	-140.51	77.9	-911.4	1,066.0	1,023.3	42.69	24.972	
4,800.0	4,505.1	4,685.8	4,554.3	32.3	21.1	-140.28	80.3	-939.4	1,092.0	1,048.1	43.92	24.866	
4,900.0	4,597.4	4,782.2	4,646.6	33.1	21.7	-140.06	82.8	-967.4	1,118.1	1,073.0	45.15	24.766	
5,000.0	4,689.6	4,878.7	4,738.8	33.9	22.3	-139.85	85.2	-995.5	1,144.2	1,097.8	46.38	24.671	
5,100.0	4,781.9	4,975.1	4,831.1	34.7	22.9	-139.64	87.7	-1,023.5	1,170.3	1,122.7	47.61	24.581	
5,113.9	4,794.7	4,988.5	4,843.9	34.8	23.0	-139.62	88.0	-1,027.4	1,174.0	1,126.2	47.78	24.569	
5,200.0	4,874.6	5,071.8	4,923.5	35.4	23.5	-139.70	90.1	-1,051.6	1,195.5	1,146.7	48.82	24.486	
5,300.0	4,968.6	5,165.9	5,013.7	36.0	24.0	-139.70	92.5	-1,078.5	1,218.2	1,168.3	49.90	24.414	
5,400.0	5,063.7	5,258.3	5,102.9	36.5	24.4	-139.71	94.6	-1,102.3	1,238.7	1,187.9	50.80	24.383	
5,500.0	5,159.9	5,351.1	5,193.3	37.0	24.8	-139.74	96.4	-1,123.4	1,257.1	1,205.5	51.59	24.367	
5,600.0	5,256.9	5,444.5	5,284.8	37.4	25.1	-139.79	98.0	-1,141.6	1,273.2	1,221.0	52.28	24.356	
5,700.0	5,354.7	5,538.2	5,377.3	37.7	25.4	-139.85	99.3	-1,156.9	1,287.2	1,234.3	52.86	24.350	
5,800.0	5,453.2	5,632.2	5,470.5	38.0	25.6	-139.92	100.4	-1,169.2	1,298.9	1,245.6	53.35	24.348	
5,900.0	5,552.2	5,726.5	5,564.4	38.3	25.8	-140.01	101.2	-1,178.5	1,308.4	1,254.6	53.73	24.350	
6,000.0	5,651.7	5,821.0	5,658.6	38.5	26.0	-140.11	101.7	-1,184.6	1,315.5	1,261.5	54.01	24.356	
6,100.0	5,751.4	5,915.5	5,753.1	38.6	26.1	-140.22	102.0	-1,187.7	1,320.5	1,266.3	54.20	24.365	
6,200.0	5,851.4	6,012.8	5,850.4	38.8	26.2	-140.33	102.0	-1,188.1	1,323.1	1,268.8	54.30	24.367	
6,248.6	5,900.0	6,061.4	5,899.0	38.8	26.3	177.83	102.0	-1,188.1	1,323.4	1,269.0	54.35	24.351	
6,300.0	5,951.4	6,112.8	5,950.4	38.8	26.3	177.83	102.0	-1,188.1	1,323.4	1,268.9	54.45	24.306	
6,400.0	6,051.4	6,212.8	6,050.4	38.9	26.4	177.83	102.0	-1,188.1	1,323.4	1,268.7	54.65	24.214	
6,500.0	6,151.4	6,312.8	6,150.4	39.0	26.5	177.83	102.0	-1,188.1	1,323.4	1,268.5	54.86	24.121	
6,600.0	6,251.4	6,412.8	6,250.4	39.0	26.6	177.83	102.0	-1,188.1	1,323.4	1,268.3	55.08	24.027	
6,700.0	6,351.4	6,512.8	6,350.4	39.1	26.7	177.83	102.0	-1,188.1	1,323.4	1,268.1	55.29	23.933	
6,800.0	6,451.4	6,612.8	6,450.4	39.2	26.9	177.83	102.0	-1,188.1	1,323.4	1,267.9	55.51	23.839	

CC - Min centre to center distance or convergent point, SF - min separation factor, ES - min ellipse separation

<b>Company:</b>	Trilogy Resources, LLC. Weld County, CO	<b>Local Co-ordinate Reference:</b>	Well Wind 17-13
<b>Project:</b>	SEC.17-T4N-R67W	<b>TVD Reference:</b>	WELL @ 4853.0ft (RKB - 13')
<b>Reference Site:</b>	Wind 17-14 Pad Sec.17-T4N-R67W	<b>MD Reference:</b>	WELL @ 4853.0ft (RKB - 13')
<b>Site Error:</b>	0.0ft	<b>North Reference:</b>	True
<b>Reference Well:</b>	Wind 17-13	<b>Survey Calculation Method:</b>	Minimum Curvature
<b>Well Error:</b>	0.0ft	<b>Output errors are at</b>	2.00 sigma
<b>Reference Wellbore</b>	Wellbore #1	<b>Database:</b>	Landmark
<b>Reference Design:</b>	Plan #1 (11-19-12)	<b>Offset TVD Reference:</b>	Offset Datum

<b>Offset Design</b> Wind 17-14 Pad Sec.17-T4N-R67W - Wind 17-14 - Wellbore #1 - Plan #1 (11-19-12)												<b>Offset Site Error:</b>	0.0 ft
Survey Program: 0-MWD												<b>Offset Well Error:</b>	0.0 ft
Reference		Offset		Semi Major Axis			Distance						Warning
Measured Depth (ft)	Vertical Depth (ft)	Measured Depth (ft)	Vertical Depth (ft)	Reference (ft)	Offset (ft)	Highside Toolface (°)	Offset Wellbore Centre +N/-S (ft)	+E/-W (ft)	Between Centres (ft)	Between Ellipses (ft)	Minimum Separation (ft)	Separation Factor	
6,900.0	6,551.4	6,712.8	6,550.4	39.3	27.0	177.83	102.0	-1,188.1	1,323.4	1,267.7	55.74	23.744	
7,000.0	6,651.4	6,812.8	6,650.4	39.4	27.1	177.83	102.0	-1,188.1	1,323.4	1,267.4	55.96	23.649	
7,100.0	6,751.4	6,912.8	6,750.4	39.4	27.2	177.83	102.0	-1,188.1	1,323.4	1,267.2	56.19	23.553	
7,200.0	6,851.4	7,012.8	6,850.4	39.5	27.3	177.83	102.0	-1,188.1	1,323.4	1,267.0	56.42	23.457	
7,300.0	6,951.4	7,112.8	6,950.4	39.6	27.5	177.83	102.0	-1,188.1	1,323.4	1,266.7	56.65	23.361	
7,400.0	7,051.4	7,212.8	7,050.4	39.7	27.6	177.83	102.0	-1,188.1	1,323.4	1,266.5	56.88	23.264	
7,500.0	7,151.4	7,312.8	7,150.4	39.8	27.7	177.83	102.0	-1,188.1	1,323.4	1,266.3	57.12	23.167	
7,600.0	7,251.4	7,412.8	7,250.4	39.9	27.8	177.83	102.0	-1,188.1	1,323.4	1,266.0	57.36	23.070	
7,663.6	7,315.0	7,476.4	7,314.0	39.9	27.9	177.83	102.0	-1,188.1	1,323.4	1,265.9	57.52	23.009	
7,664.6	7,316.0	7,477.4	7,315.0	39.9	27.9	177.83	102.0	-1,188.1	1,323.4	1,265.9	57.52	23.008	

<b>Company:</b>	Trilogy Resources, LLC. Weld County, CO	<b>Local Co-ordinate Reference:</b>	Well Wind 17-13
<b>Project:</b>	SEC.17-T4N-R67W	<b>TVD Reference:</b>	WELL @ 4853.0ft (RKB - 13')
<b>Reference Site:</b>	Wind 17-14 Pad Sec.17-T4N-R67W	<b>MD Reference:</b>	WELL @ 4853.0ft (RKB - 13')
<b>Site Error:</b>	0.0ft	<b>North Reference:</b>	True
<b>Reference Well:</b>	Wind 17-13	<b>Survey Calculation Method:</b>	Minimum Curvature
<b>Well Error:</b>	0.0ft	<b>Output errors are at</b>	2.00 sigma
<b>Reference Wellbore</b>	Wellbore #1	<b>Database:</b>	Landmark
<b>Reference Design:</b>	Plan #1 (11-19-12)	<b>Offset TVD Reference:</b>	Offset Datum

Offset Design													Offset Site Error:	0.0ft
Survey Program: 0-MWD													Offset Well Error:	0.0ft
Reference		Offset		Semi Major Axis			Distance							Warning
Measured Depth (ft)	Vertical Depth (ft)	Measured Depth (ft)	Vertical Depth (ft)	Reference (ft)	Offset (ft)	Highside Toolface (°)	Offset Wellbore Centre +N/-S (ft)	+E/-W (ft)	Between Centres (ft)	Between Ellipses (ft)	Minimum Separation (ft)	Separation Factor		
0.0	0.0	1.0	1.0	0.0	0.0	89.99	0.0	39.0	39.0	39.0	0.00	N/A		
100.0	100.0	101.0	101.0	0.1	0.1	89.99	0.0	39.0	39.0	38.8	0.23	172.000		
200.0	200.0	201.0	201.0	0.3	0.3	89.99	0.0	39.0	39.0	38.4	0.68	57.714 CC		
300.0	300.0	301.0	301.0	0.6	0.6	102.49	0.0	39.0	39.4	38.3	1.13	34.981 ES		
400.0	399.8	400.8	400.8	0.8	0.8	109.64	0.0	39.0	40.8	39.3	1.58	25.813		
450.0	449.7	450.7	450.7	0.9	0.9	114.61	0.0	39.0	42.3	40.5	1.82	23.306		
500.0	499.5	500.5	500.5	1.0	1.0	126.18	0.0	39.0	44.7	42.7	2.05	21.786		
600.0	598.8	599.8	599.8	1.3	1.2	143.95	0.0	39.0	53.1	50.5	2.53	20.998		
700.0	697.7	698.7	698.7	1.6	1.5	156.05	0.0	39.0	65.9	62.9	3.00	21.993		
800.0	796.0	797.0	797.0	2.0	1.7	164.13	0.0	39.0	82.9	79.4	3.46	23.944		
900.0	893.8	894.8	894.8	2.4	1.9	169.51	0.0	39.0	103.6	99.7	3.92	26.417		
1,000.0	990.7	994.8	994.8	2.9	2.1	172.72	1.6	39.0	126.8	122.4	4.38	28.916		
1,100.0	1,086.7	1,095.5	1,095.3	3.4	2.4	174.05	6.7	38.8	150.9	146.0	4.85	31.096		
1,200.0	1,181.8	1,196.5	1,196.0	4.0	2.6	174.20	15.3	38.4	175.8	170.5	5.33	32.952		
1,300.0	1,275.7	1,297.7	1,296.5	4.6	2.8	173.58	27.5	37.9	201.7	195.9	5.84	34.511		
1,381.2	1,351.0	1,380.1	1,377.8	5.2	3.1	172.70	40.1	37.4	223.6	217.3	6.29	35.555		
1,400.0	1,368.4	1,399.1	1,396.6	5.4	3.1	172.33	43.3	37.3	228.7	222.3	6.40	35.727		
1,500.0	1,460.6	1,501.2	1,496.8	6.1	3.4	170.25	62.8	36.5	254.6	247.6	7.05	36.132		
1,600.0	1,552.9	1,604.0	1,596.9	6.9	3.8	167.96	86.0	35.6	278.6	270.8	7.77	35.851		
1,700.0	1,645.1	1,707.3	1,696.7	7.7	4.2	165.47	112.9	34.5	300.8	292.2	8.59	35.012		
1,800.0	1,737.4	1,810.8	1,795.6	8.4	4.7	162.79	143.5	33.3	321.3	311.8	9.52	33.737		
1,900.0	1,829.6	1,912.4	1,891.5	9.2	5.2	160.00	176.7	32.0	340.7	330.1	10.57	32.226		
2,000.0	1,921.9	2,009.2	1,982.7	10.0	5.8	157.50	209.3	30.7	360.2	348.5	11.68	30.852		
2,100.0	2,014.2	2,106.1	2,073.9	10.8	6.3	155.25	241.9	29.4	380.4	367.5	12.83	29.647		
2,200.0	2,106.4	2,203.0	2,165.2	11.6	6.9	153.23	274.5	28.1	401.0	387.0	14.02	28.596		
2,300.0	2,198.7	2,299.9	2,256.4	12.4	7.5	151.41	307.1	26.8	422.1	406.9	15.25	27.682		
2,400.0	2,290.9	2,396.8	2,347.6	13.2	8.1	149.75	339.7	25.5	443.6	427.1	16.50	26.886		
2,500.0	2,383.2	2,493.7	2,438.9	14.0	8.7	148.25	372.3	24.2	465.4	447.7	17.77	26.193		
2,600.0	2,475.4	2,590.6	2,530.1	14.8	9.3	146.89	404.8	22.9	487.5	468.5	19.05	25.587		
2,700.0	2,567.7	2,687.5	2,621.4	15.6	10.0	145.64	437.4	21.6	509.9	489.5	20.35	25.055		
2,800.0	2,660.0	2,784.4	2,712.6	16.3	10.6	144.49	470.0	20.3	532.4	510.8	21.66	24.586		
2,900.0	2,752.2	2,881.2	2,803.8	17.1	11.2	143.44	502.6	19.0	555.2	532.2	22.97	24.171		
3,000.0	2,844.5	2,978.1	2,895.1	17.9	11.8	142.47	535.2	17.7	578.1	553.8	24.29	23.801		
3,100.0	2,936.7	3,075.0	2,986.3	18.7	12.4	141.57	567.8	16.4	601.1	575.5	25.61	23.471		
3,200.0	3,029.0	3,171.9	3,077.5	19.5	13.1	140.74	600.3	15.0	624.3	597.3	26.94	23.175		
3,300.0	3,121.2	3,268.8	3,168.8	20.3	13.7	139.97	632.9	13.7	647.6	619.3	28.27	22.909		
3,400.0	3,213.5	3,365.7	3,260.0	21.1	14.3	139.25	665.5	12.4	671.0	641.4	29.60	22.668		
3,500.0	3,305.8	3,462.6	3,351.2	21.9	15.0	138.58	698.1	11.1	694.5	663.5	30.93	22.450		
3,600.0	3,398.0	3,559.5	3,442.5	22.7	15.6	137.95	730.7	9.8	718.0	685.8	32.27	22.251		
3,700.0	3,490.3	3,656.4	3,533.7	23.5	16.2	137.37	763.3	8.5	741.7	708.1	33.61	22.069		
3,800.0	3,582.5	3,753.3	3,625.0	24.3	16.9	136.82	795.9	7.2	765.4	730.5	34.95	21.903		
3,900.0	3,674.8	3,850.1	3,716.2	25.1	17.5	136.30	828.4	5.9	789.2	752.9	36.28	21.750		
4,000.0	3,767.0	3,947.0	3,807.4	25.9	18.1	135.81	861.0	4.6	813.0	775.4	37.62	21.609		
4,100.0	3,859.3	4,043.9	3,898.7	26.7	18.8	135.35	893.6	3.3	836.9	798.0	38.96	21.479		
4,200.0	3,951.6	4,140.8	3,989.9	27.5	19.4	134.92	926.2	2.0	860.9	820.6	40.31	21.359		
4,300.0	4,043.8	4,237.7	4,081.1	28.3	20.1	134.51	958.8	0.7	884.9	843.2	41.65	21.247		
4,400.0	4,136.1	4,334.6	4,172.4	29.1	20.7	134.12	991.4	-0.6	908.9	865.9	42.99	21.144		
4,500.0	4,228.3	4,431.5	4,263.6	29.9	21.3	133.75	1,023.9	-1.9	933.0	888.6	44.33	21.047		
4,600.0	4,320.6	4,528.4	4,354.8	30.7	22.0	133.40	1,056.5	-3.2	957.1	911.4	45.67	20.956		
4,700.0	4,412.9	4,625.3	4,446.1	31.5	22.6	133.06	1,089.1	-4.5	981.2	934.2	47.01	20.872		
4,800.0	4,505.1	4,722.1	4,537.3	32.3	23.3	132.74	1,121.7	-5.8	1,005.4	957.0	48.35	20.793		
4,900.0	4,597.4	4,819.0	4,628.6	33.1	23.9	132.44	1,154.3	-7.1	1,029.6	979.9	49.69	20.718		

CC - Min centre to center distance or convergent point, SF - min separation factor, ES - min ellipse separation

Offset Design													Wind 17-14 Pad Sec.17-T4N-R67W - Wind 17-23 - Wellbore #1 - Plan #1 (11-19-12)		Offset Site Error:		0.0 ft
Survey Program: 0-MWD													Offset Well Error:		0.0 ft		
Reference		Offset		Semi Major Axis			Distance							Warning			
Measured Depth	Vertical Depth	Measured Depth	Vertical Depth	Reference	Offset	Highside Toolface	Offset Wellbore Centre		Between Centres	Between Ellipses	Minimum Separation	Separation Factor					
Depth (ft)	Depth (ft)	Depth (ft)	Depth (ft)	(ft)	(ft)	(°)	+N/-S (ft)	+E/-W (ft)	(ft)	(ft)	(ft)						
5,000.0	4,689.6	4,915.9	4,719.8	33.9	24.5	132.15	1,186.9	-8.4	1,053.8	1,002.7	51.03	20.648					
5,100.0	4,781.9	5,012.8	4,811.0	34.7	25.2	131.88	1,219.5	-9.7	1,078.0	1,025.6	52.38	20.582					
5,113.9	4,794.7	5,026.3	4,823.7	34.8	25.3	131.84	1,224.0	-9.9	1,081.4	1,028.8	52.56	20.573					
5,200.0	4,874.6	5,107.9	4,900.9	35.4	25.7	131.92	1,250.7	-10.9	1,101.5	1,047.9	53.60	20.550					
5,300.0	4,968.6	5,202.9	4,991.5	36.0	26.2	132.02	1,278.9	-12.1	1,123.0	1,068.4	54.60	20.566					
5,400.0	5,063.7	5,298.3	5,083.5	36.5	26.6	132.13	1,304.3	-13.1	1,142.4	1,086.9	55.51	20.579					
5,500.0	5,159.9	5,394.3	5,176.8	37.0	27.0	132.24	1,326.8	-14.0	1,159.8	1,103.5	56.33	20.588					
5,600.0	5,256.9	5,490.7	5,271.2	37.4	27.3	132.36	1,346.1	-14.8	1,175.0	1,118.0	57.05	20.595					
5,700.0	5,354.7	5,587.4	5,366.5	37.7	27.6	132.49	1,362.3	-15.4	1,188.2	1,130.5	57.68	20.601					
5,800.0	5,453.2	5,684.3	5,462.6	38.0	27.9	132.62	1,375.4	-15.9	1,199.2	1,141.0	58.20	20.606					
5,900.0	5,552.2	5,781.5	5,559.3	38.3	28.1	132.76	1,385.2	-16.3	1,208.0	1,149.4	58.62	20.609					
6,000.0	5,651.7	5,878.8	5,656.4	38.5	28.2	132.90	1,391.7	-16.6	1,214.7	1,155.8	58.93	20.613					
6,100.0	5,751.4	5,976.2	5,753.6	38.6	28.4	133.05	1,394.9	-16.7	1,219.3	1,160.1	59.14	20.616					
6,200.0	5,851.4	6,074.9	5,852.4	38.8	28.5	133.18	1,395.3	-16.7	1,221.6	1,162.3	59.27	20.610					
6,248.6	5,900.0	6,123.5	5,901.0	38.8	28.5	91.37	1,395.3	-16.7	1,221.9	1,162.5	59.33	20.595					
6,300.0	5,951.4	6,174.9	5,952.4	38.8	28.5	91.37	1,395.3	-16.7	1,221.9	1,162.5	59.42	20.564					
6,400.0	6,051.4	6,274.9	6,052.4	38.9	28.6	91.37	1,395.3	-16.7	1,221.9	1,162.3	59.60	20.502					
6,500.0	6,151.4	6,374.9	6,152.4	39.0	28.7	91.37	1,395.3	-16.7	1,221.9	1,162.1	59.78	20.439					
6,600.0	6,251.4	6,474.9	6,252.4	39.0	28.8	91.37	1,395.3	-16.7	1,221.9	1,161.9	59.97	20.376					
6,700.0	6,351.4	6,574.9	6,352.4	39.1	28.9	91.37	1,395.3	-16.7	1,221.9	1,161.7	60.15	20.312					
6,800.0	6,451.4	6,674.9	6,452.4	39.2	29.0	91.37	1,395.3	-16.7	1,221.9	1,161.5	60.35	20.248					
6,900.0	6,551.4	6,774.9	6,552.4	39.3	29.1	91.37	1,395.3	-16.7	1,221.9	1,161.3	60.54	20.183					
7,000.0	6,651.4	6,874.9	6,652.4	39.4	29.2	91.37	1,395.3	-16.7	1,221.9	1,161.1	60.74	20.118					
7,100.0	6,751.4	6,974.9	6,752.4	39.4	29.3	91.37	1,395.3	-16.7	1,221.9	1,160.9	60.93	20.052					
7,200.0	6,851.4	7,074.9	6,852.4	39.5	29.5	91.37	1,395.3	-16.7	1,221.9	1,160.7	61.14	19.986					
7,300.0	6,951.4	7,174.9	6,952.4	39.6	29.6	91.37	1,395.3	-16.7	1,221.9	1,160.5	61.34	19.919					
7,400.0	7,051.4	7,274.9	7,052.4	39.7	29.7	91.37	1,395.3	-16.7	1,221.9	1,160.3	61.55	19.853					
7,500.0	7,151.4	7,374.9	7,152.4	39.8	29.8	91.37	1,395.3	-16.7	1,221.9	1,160.1	61.76	19.785					
7,600.0	7,251.4	7,474.9	7,252.4	39.9	29.9	91.37	1,395.3	-16.7	1,221.9	1,159.9	61.97	19.717					
7,642.1	7,293.4	7,517.0	7,294.4	39.9	29.9	91.37	1,395.3	-16.7	1,221.9	1,159.8	62.06	19.689					
7,663.6	7,315.0	7,537.5	7,315.0	39.9	30.0	91.37	1,395.3	-16.7	1,221.9	1,159.8	62.10	19.675					
7,664.6	7,316.0	7,537.5	7,315.0	39.9	30.0	91.37	1,395.3	-16.7	1,221.9	1,159.8	62.10	19.674 SF					

**Company:** Trilogy Resources, LLC. Weld County, CO  
**Project:** SEC.17-T4N-R67W  
**Reference Site:** Wind 17-14 Pad Sec.17-T4N-R67W  
**Site Error:** 0.0ft  
**Reference Well:** Wind 17-13  
**Well Error:** 0.0ft  
**Reference Wellbore:** Wellbore #1  
**Reference Design:** Plan #1 (11-19-12)

**Local Co-ordinate Reference:** Well Wind 17-13  
**TVD Reference:** WELL @ 4853.0ft (RKB - 13')  
**MD Reference:** WELL @ 4853.0ft (RKB - 13')  
**North Reference:** True  
**Survey Calculation Method:** Minimum Curvature  
**Output errors are at** 2.00 sigma  
**Database:** Landmark  
**Offset TVD Reference:** Offset Datum

Reference Depths are relative to WELL @ 4853.0ft (RKB - 13')

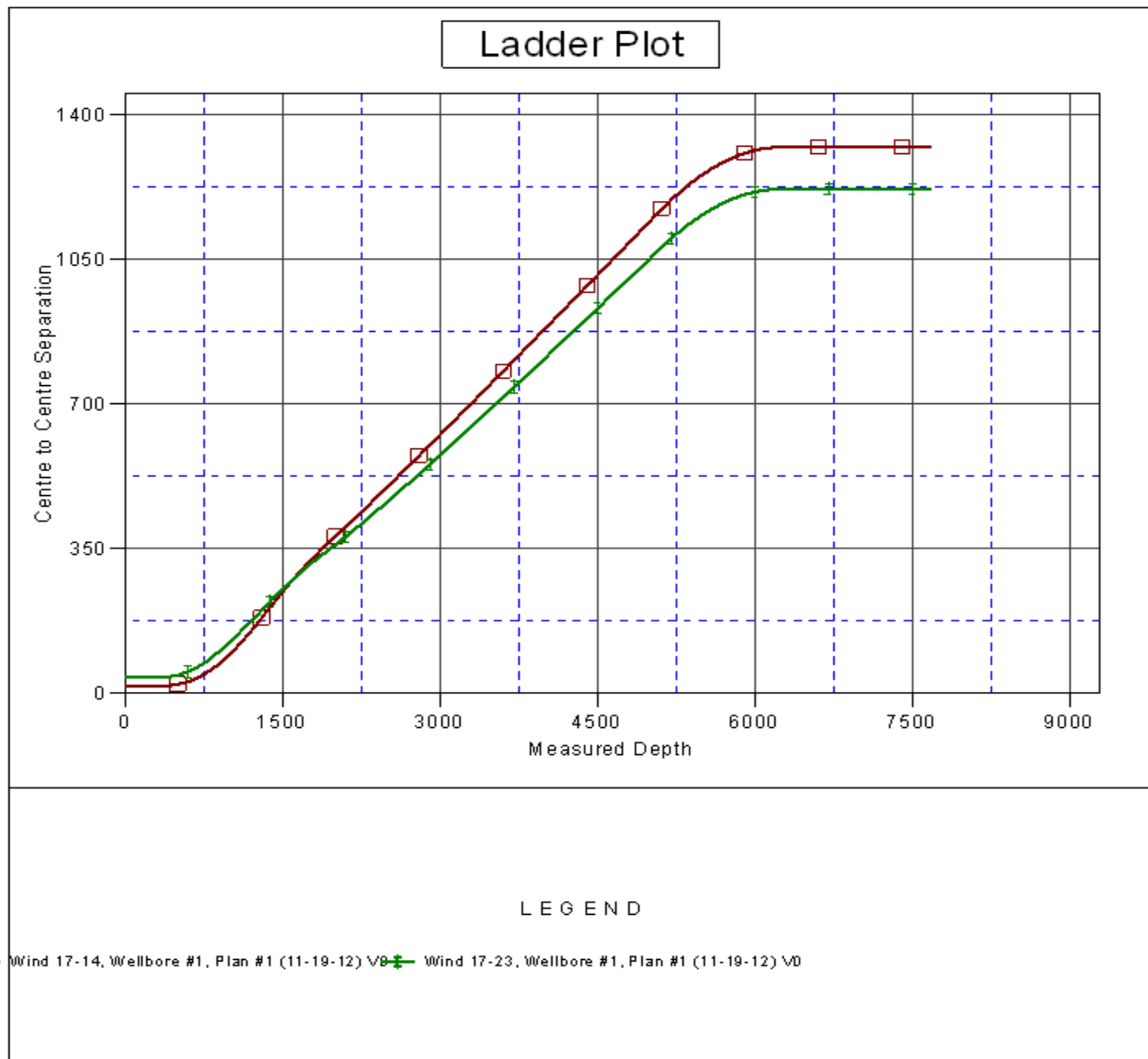
Offset Depths are relative to Offset Datum

Central Meridian is -105.500000 °

Coordinates are relative to: Wind 17-13

Coordinate System is US State Plane 1983, Colorado Northern Zone

Grid Convergence at Surface is: 0.38°



<b>Company:</b>	Trilogy Resources, LLC. Weld County, CO	<b>Local Co-ordinate Reference:</b>	Well Wind 17-13
<b>Project:</b>	SEC.17-T4N-R67W	<b>TVD Reference:</b>	WELL @ 4853.0ft (RKB - 13')
<b>Reference Site:</b>	Wind 17-14 Pad Sec.17-T4N-R67W	<b>MD Reference:</b>	WELL @ 4853.0ft (RKB - 13')
<b>Site Error:</b>	0.0ft	<b>North Reference:</b>	True
<b>Reference Well:</b>	Wind 17-13	<b>Survey Calculation Method:</b>	Minimum Curvature
<b>Well Error:</b>	0.0ft	<b>Output errors are at</b>	2.00 sigma
<b>Reference Wellbore</b>	Wellbore #1	<b>Database:</b>	Landmark
<b>Reference Design:</b>	Plan #1 (11-19-12)	<b>Offset TVD Reference:</b>	Offset Datum

Reference Depths are relative to WELL @ 4853.0ft (RKB - 13')  
Offset Depths are relative to Offset Datum  
Central Meridian is -105.500000 °

Coordinates are relative to: Wind 17-13  
Coordinate System is US State Plane 1983, Colorado Northern Zone  
Grid Convergence at Surface is: 0.38°

