

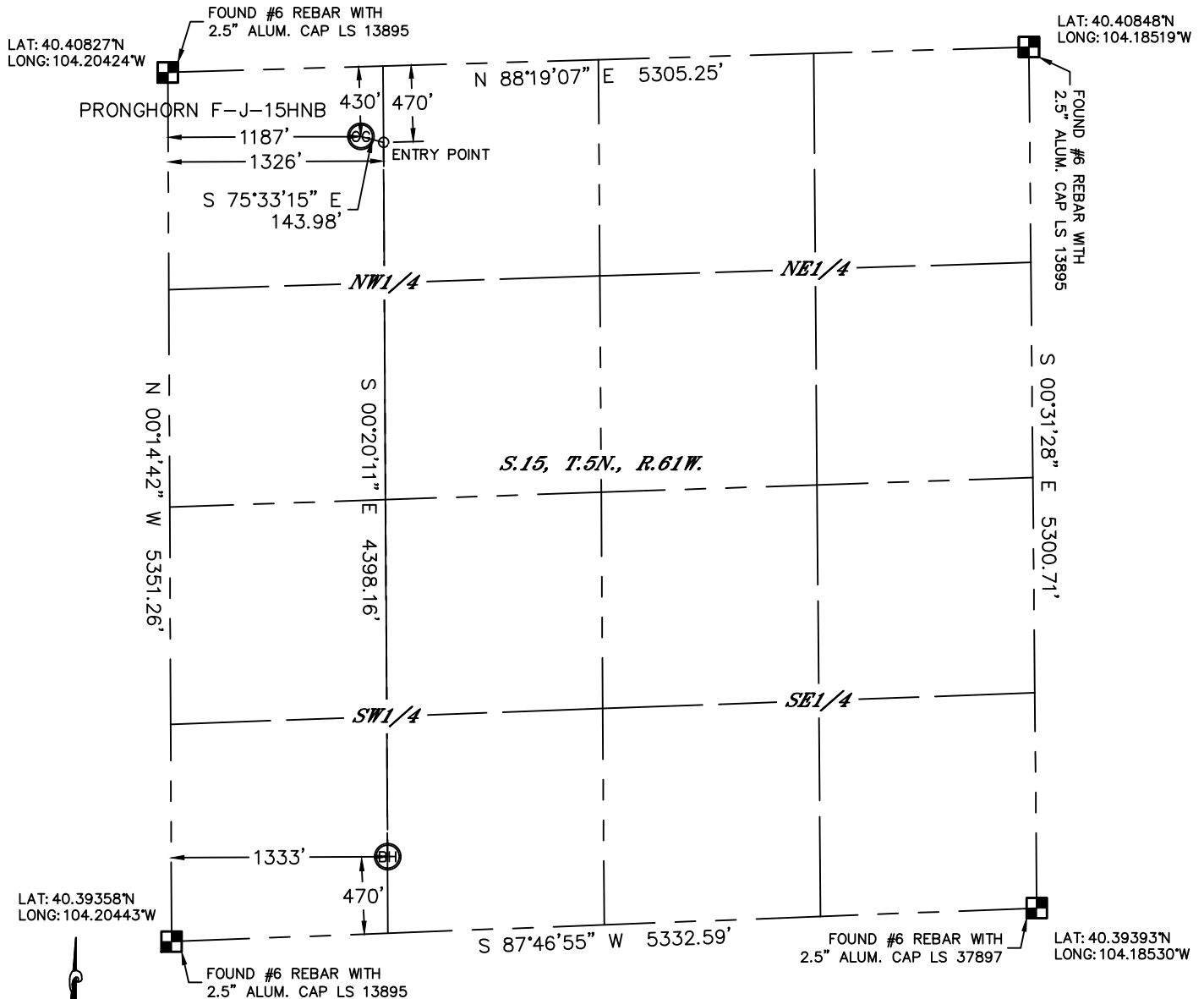


Lat40°, Inc. 1635 Foxtrail Drive, Suite 325 Loveland, CO 970-776-3321

# WELL LOCATION CERTIFICATE

THIS MAP DOES NOT REPRESENT A BOUNDARY SURVEY

SECTION: 15  
TOWNSHIP: 5N  
RANGE: 61W



In accordance with a request from Michael Meagher with BONANZA CREEK ENERGY, INC. Lat40°, Inc. has determined the surface location of the PRONGHORN F-J-15HNB to be 430' from the NORTH line and 1187' from the WEST line and the bottom hole to be 470' from the SOUTH line and 1333' from the WEST line as measured at right angles from the section lines of Section 15, Township 5 North, Range 61 West of the Sixth Principal Meridian, County of Weld, State of Colorado.

I hereby state that this Well Location Certificate was prepared by me, or under my direct supervision, that the fieldwork was completed on 7/9/12, for and on behalf of BONANZA CREEK ENERGY, INC. That this is not a Land Survey Plat or an Improvement Survey Plat, and that it is not to be relied upon for establishment of fence, building, or other future improvement lines.

## NOTE:

- 1) Bearings shown are Grid Bearings of the Colorado State Plane Coordinate System, North Zone, North American Datum 1983/2007. The lineal dimensions as contained herein are based upon the "U.S. Survey Foot."
- 2) Ground elevations are based on an observed GPS elevation (NAVD 1988 DATUM).
- 3) IMPROVEMENTS: See LOCATION DRAWING for all visible improvements within 400' of disturbed area.
- 4) SURFACE USE: RANGELAND/CROP LAND
- 5) INSTRUMENT OPERATOR: WYATT HALL

## SURFACE LOCATION

LAT: 40.40714°N  
LONG: 104.19999°W  
PDOP: 1.0  
ELEV: 4648'  
1/4,1/4: NW1/4NW1/4  
NEAREST PROPERTY LINE: 430' N

## ENTRY POINT

LAT: 40.40703°N  
LONG: 104.19949°W  
1/4,1/4: NW1/4NW1/4

## BOTTOM HOLE

LAT: 40.39496°N  
LONG: 104.19963°W  
1/4,1/4: SE1/4SW1/4

## NOTE

According to Colorado law, you must commence any legal action based upon any defect in this W.L.C. within three years after you discover such defect. In no event, may any action based upon any defect in this survey be commenced more than ten years after the date of the certificate shown hereon. (13-80-105 C.R.S.)

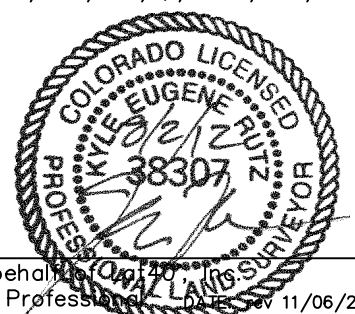
## LEGEND



= ALIQUOT MONUMENT AS DESCRIBED



= CALCULATED POSITION



Kyle E. Rutz—On behalf of Lat40°, Inc.  
Colorado Licensed Professional Land Surveyor No. 38307  
DATE: July 11/06/2012  
PROJECT#: 2012073