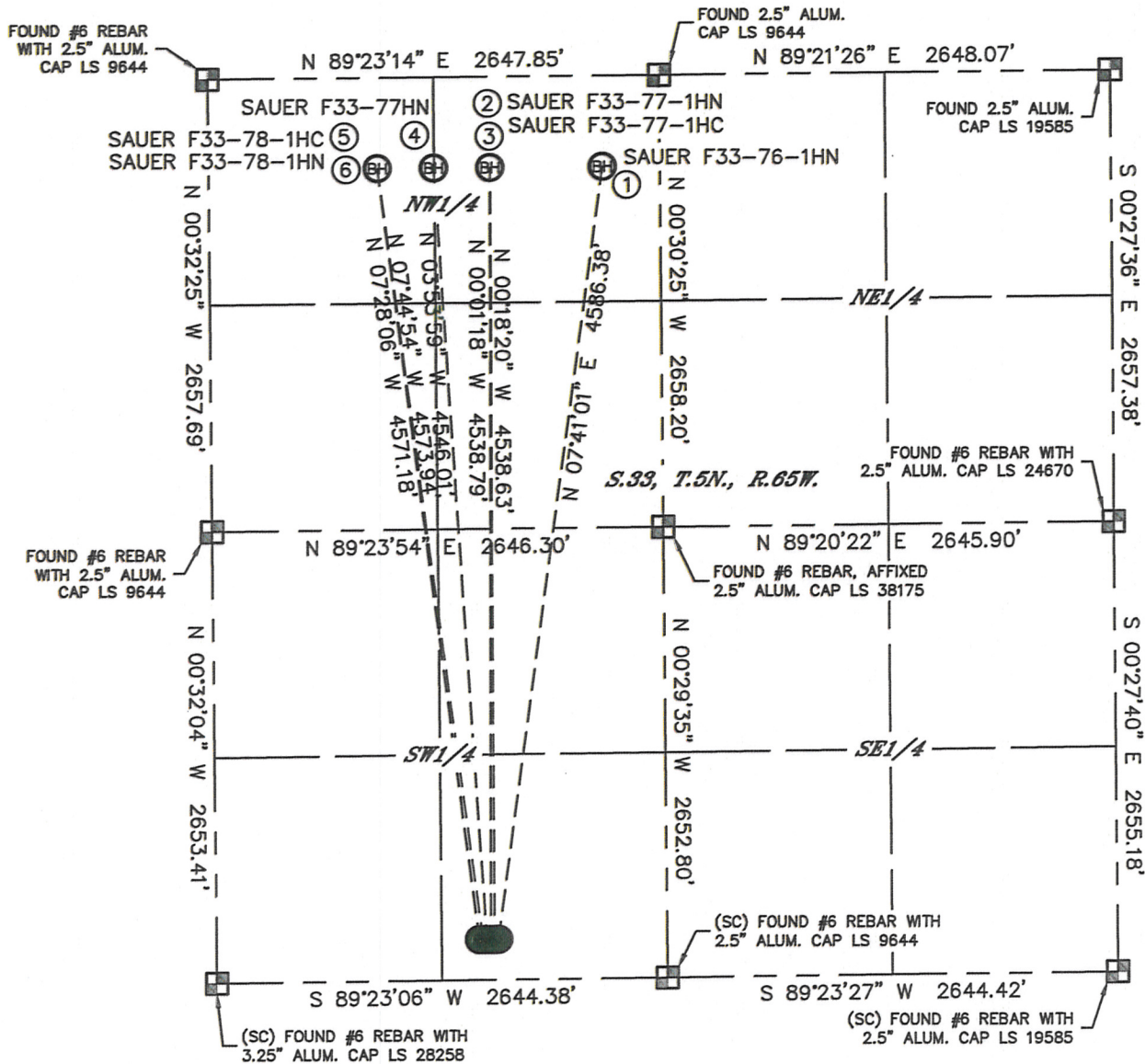


MULTI-WELL PLAN

SAUER F33 PAD

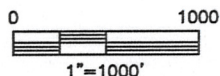
THIS MAP DOES NOT REPRESENT A BOUNDARY SURVEY

SECTION: 33
TOWNSHIP: 5N
RANGE: 65W



- | | | | | | |
|--|--|--|--|---|---|
| ① | ② | ③ | ④ | ⑤ | ⑥ |
| -BOTTOM HOLE-
SAUER F33-76-1HN
535' FNL
2310' FWL
LAT-40.36159°N
LONG-104.66957°W | -BOTTOM HOLE-
SAUER F33-77-1HN
535' FNL
1650' FWL
LAT-40.36159°N
LONG-104.67194°W | -BOTTOM HOLE-
SAUER F33-77-1HC
535' FNL
1650' FWL
LAT-40.36159°N
LONG-104.67194°W | -BOTTOM HOLE-
SAUER F33-77-1HN
535' FNL
1320' FWL
LAT-40.36159°N
LONG-104.67312°W | -BOTTOM HOLE-
SAUER F33-78-1HC
535' FNL
990' FWL
LAT-40.36158°N
LONG-104.67431°W | -BOTTOM HOLE-
SAUER F33-78-1HN
535' FNL
990' FWL
LAT-40.36158°N
LONG-104.67431°W |

- LEGEND
- = ALIQUOT MONUMENT AS DESCRIBED
 - = CALCULATED POSITION



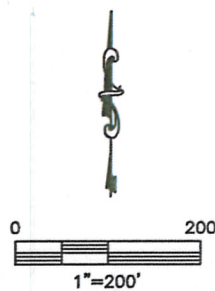
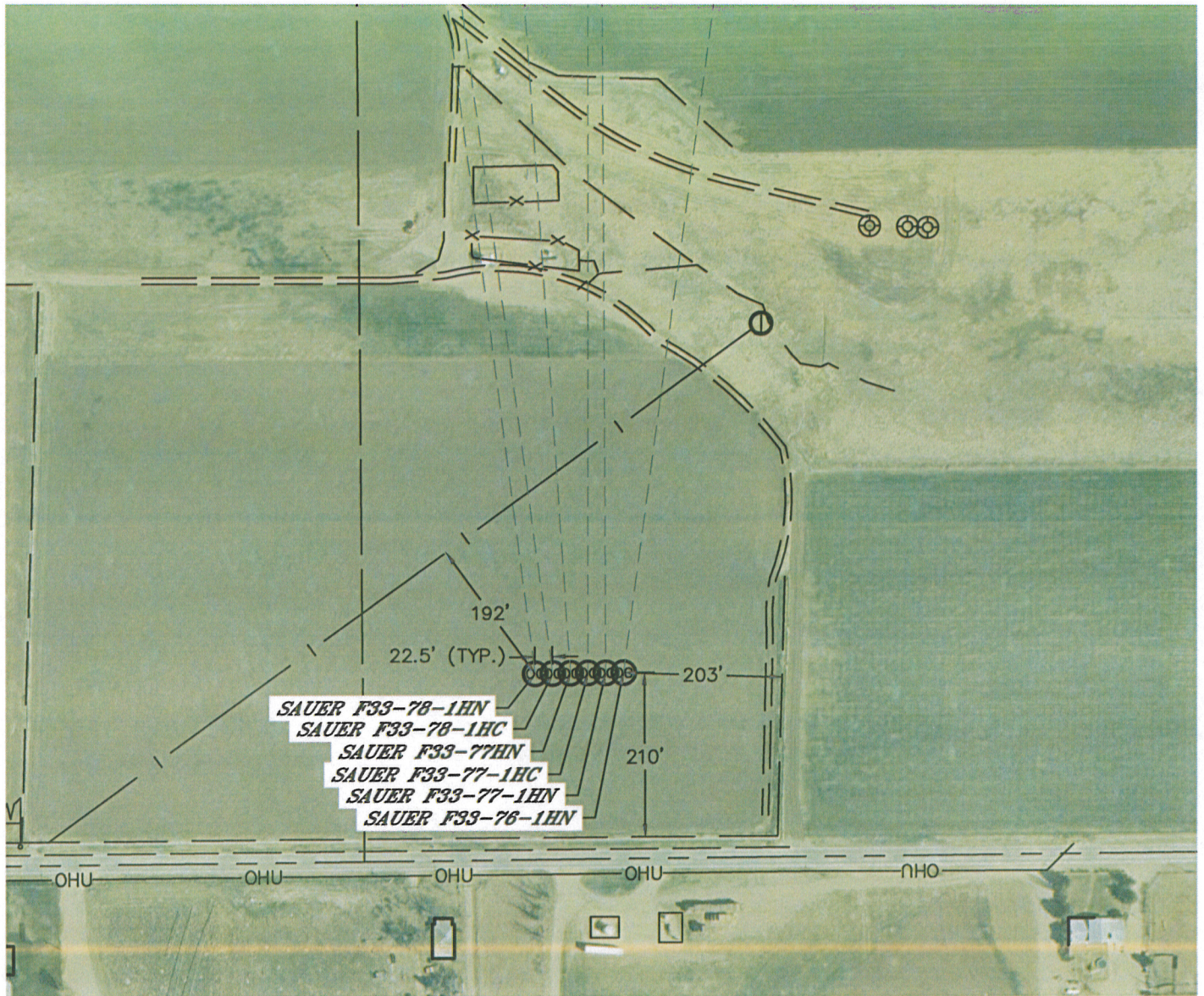
DATE: 9/27/2012
PROJECT#: 2011334

Lat40°, Inc. 1635 Foxtrail Drive, Suite 325 Loveland, CO 970-776-3321

MULTI-WELL PLAN

SAUER F33 PAD

SECTION: 33
TOWNSHIP: 5N
RANGE: 65W



DATE: 9/27/2012
PROJECT#: 2011334