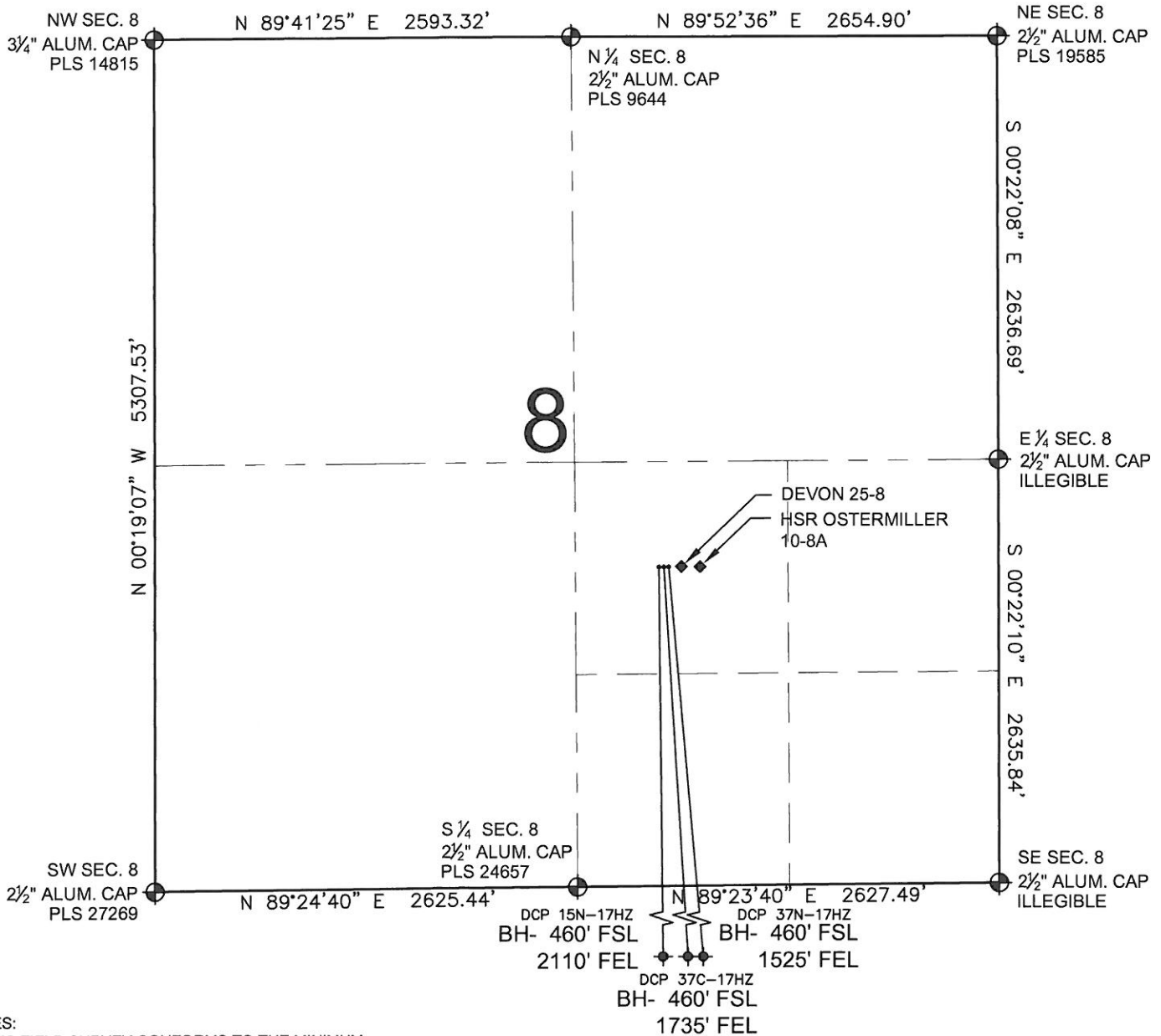


# MULTI-WELL PLAN DCP 37N-17HZ

SECTION 8, TOWNSHIP 3 NORTH, RANGE 66 WEST, 6TH P.M.



## NOTES:

1. THIS FIELD SURVEY CONFORMS TO THE MINIMUM STANDARDS SET BY THE C.O.G.C.C., RULE NO. 215
2. HORIZONTAL POSITIONS AND ORTHOMETRIC ELEVATIONS SHOWN AT THE WELL HEAD, ARE BASED ON GPS-RTK POSITIONS DERIVED FROM MINIMUM 2-HOUR STATIC OBSERVATIONS CORRECTED BY THE NATIONAL GEODETIC SURVEY ONLINE POSITIONING USER SERVICE, O.P.U.S. DATUM: HORIZONTAL = NAD83/2007, VERTICAL = NAVD88
3. THE BASIS OF BEARINGS ARE STATE PLANE COORDINATE SYSTEM GRID BEARINGS SHOWN HEREON BETWEEN THE DESCRIBED THE MONUMENTS SHOWN HEREON.
4. GRID DISTANCES ARE SHOWN, AS MEASURED IN THE FIELD, WITH TIES TO WELLS MEASURED PERPENDICULAR TO SECTION LINES.

## LEGEND

- ⊕ = EXISTING MONUMENT
- = PROPOSED WELL
- ⬮ = BOTTOM HOLE
- ◆ = EXISTING WELL
- BH = BOTTOM HOLE

## NOTES:

DCP 15N-17HZ TO BE AT 1988' FSL, 2117' FEL.  
 BOTTOM HOLE AT 460' FSL & 2110' FEL.  
 DCP 37C-17HZ TO BE AT 1988' FSL, 2087' FEL.  
 BOTTOM HOLE AT 460' FSL & 1735' FEL.  
 DCP 37N-17HZ TO BE AT 1988' FSL, 2057' FEL.  
 BOTTOM HOLE AT 460' FSL & 1525' FEL.  
 EXISTING WELL DEVON 25-8 1988' FSL & 2027' FEL  
 EXISTING WELL HSR OSTERMILLER 10-8A 1987' FSL & 1978' FEL

PREPARED BY:

**PFS**



Petroleum Field Services, LLC  
 1801 W. 13th Ave.  
 Denver, CO 80204

KERR-MCGEE OIL & GAS ONSHORE LP

FIELD DATE:  
02-24-12

PAD NAME:  
DCP 3 PAD NWSE

DRAWING DATE:  
02-29-12

SURFACE LOCATION:

BY:  
KAG

WELD COUNTY, COLORADO  
 NW 1/4 SE 1/4, SEC. 8, T3N, R66W, 6TH P.M.

