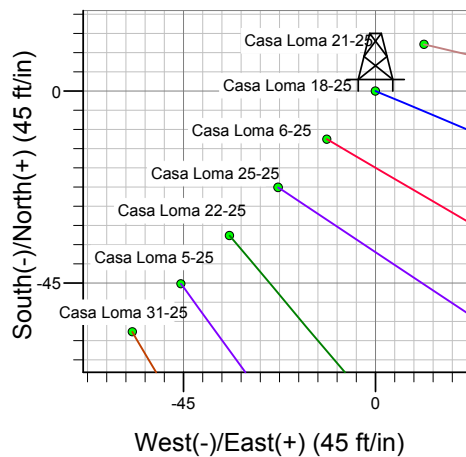
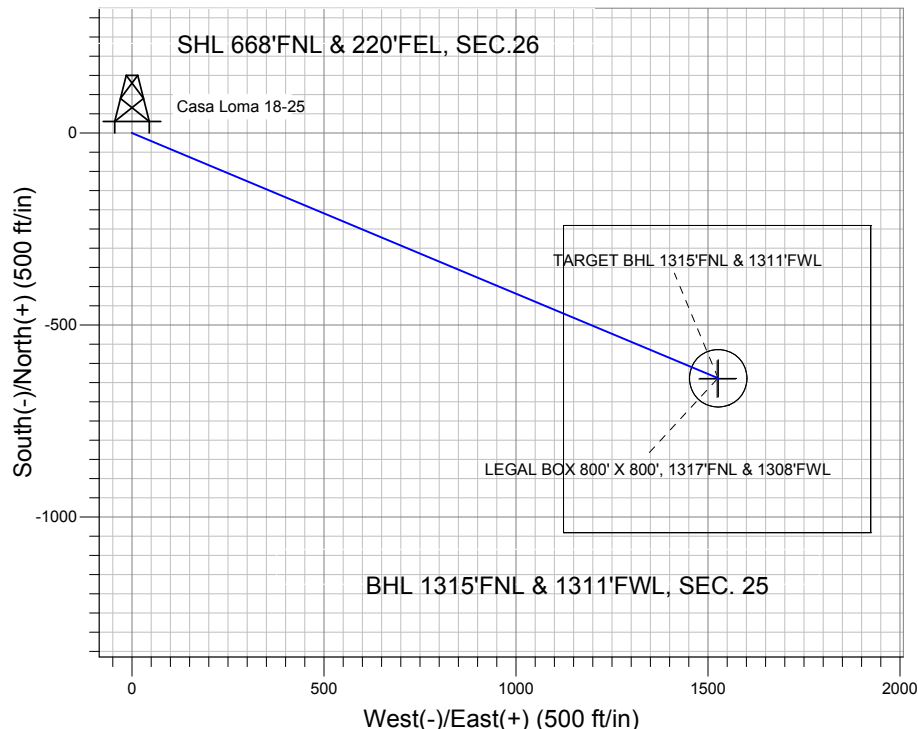
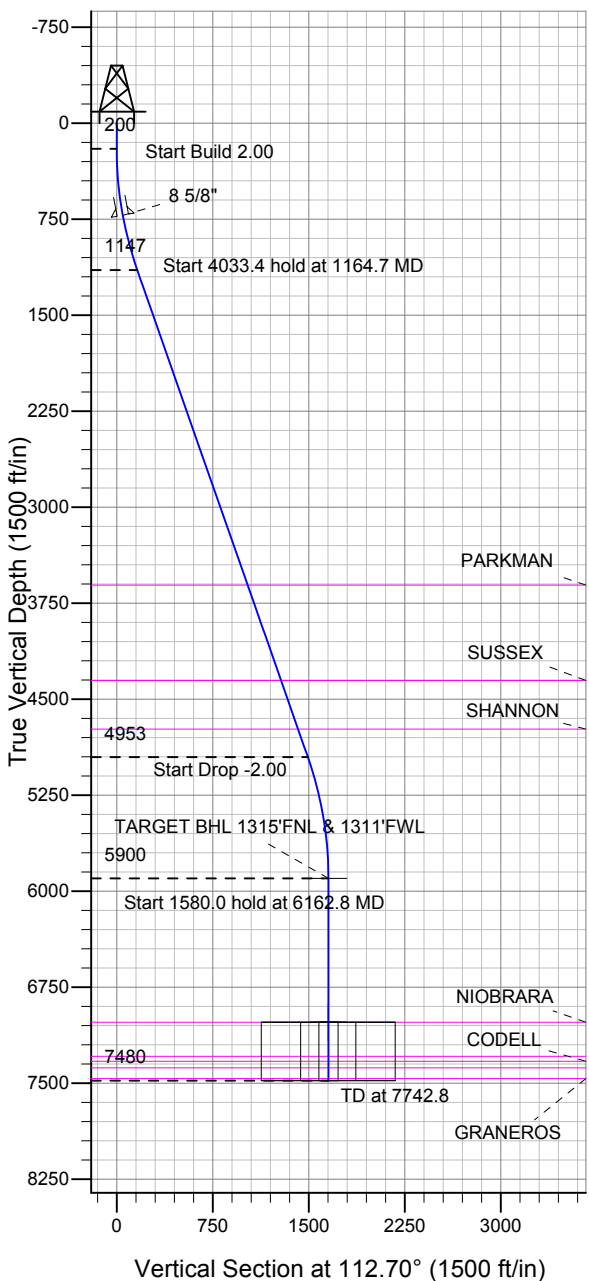


Well Name: Casa Loma 18-25

Surface Location: Casa Loma 8 Pad Sec.26-T7N-R67W
 North American Datum 1983 US State Plane 1983 Colorado Northern Zone
 Ground Elevation: 4953.0
 +N/-S +E/-W Northing Easting Latitude Longitude Slot
 0.0 0.0 1444059.37 3180159.33 40.550535 -104.851687
 Original Well Elev WELL @ 4969.0ft (Original Well Elev)

BAYSWATER EXPLORATION & PRODUCTION



Casa Loma 8 Pad Sec.26-T7N-R67W
 Casa Loma 18-25
 Plan #1 (7-16-12)
 11:54, July 20 2012



Azimuths to True North
 Magnetic North: 8.78°

Magnetic Field
 Strength: 53084.1snT
 Dip Angle: 67.12°
 Date: 7/20/2012
 Model: IGRF2010

WELLBORE TARGET DETAILS (LAT/LONG)

Name	TVD	+N/-S	+E/-W	Latitude	Longitude	Shape
TARGET BHL 1315'FNL & 1311'FWL	5900.0	-638.6	1526.3	40.548782	-104.846195	Point
LEGAL BOX 800' X 800', 1317'FNL & 1308'FWL	7024.0	-640.6	1523.3	40.548777	-104.846206	Rectangle (Sides: L800.0 W800.0)
TARGET CIRCLE 1315'FNL & 1311'FWL	7024.0	-638.6	1526.3	40.548782	-104.846195	Circle (Radius: 75.0)

SECTION DETAILS

Sec	MD	Inc	Azi	TVD	+N/-S	+E/-W	DLeg	TFace	VSec	Target
1	0.0	0.00	0.00	0.0	0.0	0.0	0.00	0.00	0.0	
2	200.0	0.00	0.00	200.0	0.0	0.0	0.00	0.00	0.0	
3	1164.7	19.29	112.70	1146.6	-62.1	148.4	2.00	112.70	160.9	
4	5198.1	19.29	112.70	4953.4	-576.5	1377.8	0.00	0.00	1493.6	
5	6162.8	0.00	0.00	5900.0	-638.6	1526.3	2.00	180.00	1654.5	TARGET BHL 1315'FNL & 1311'FWL
6	7742.8	0.00	0.00	7480.0	-638.6	1526.3	0.00	0.00	1654.5	



Directional

BAYSWATER EXPLORATION & PRODUCTION

SEC.26-T7N-R67W

Casa Loma 8 Pad Sec.26-T7N-R67W

Casa Loma 18-25

Wellbore #1

Plan: Plan #1 (7-16-12)

Standard Planning Report

20 July, 2012

Database:	Landmark	Local Co-ordinate Reference:	Well Casa Loma 18-25
Company:	BAYSWATER EXPLORATION & PRODUCTION	TVD Reference:	WELL @ 4969.0ft (Original Well Elev)
Project:	SEC.26-T7N-R67W	MD Reference:	WELL @ 4969.0ft (Original Well Elev)
Site:	Casa Loma 8 Pad Sec.26-T7N-R67W	North Reference:	True
Well:	Casa Loma 18-25	Survey Calculation Method:	Minimum Curvature
Wellbore:	Wellbore #1		
Design:	Plan #1 (7-16-12)		

Project	SEC.26-T7N-R67W, Weld County, CO		
Map System:	US State Plane 1983	System Datum:	Mean Sea Level
Geo Datum:	North American Datum 1983		Using Well Reference Point
Map Zone:	Colorado Northern Zone		Using geodetic scale factor

Site Casa Loma 8 Pad Sec.26-T7N-R67W					
Site Position:		Northing:	1,444,013.87 ft	Latitude:	40.550411
From:	Lat/Long	Easting:	3,180,114.09 ft	Longitude:	-104.851851
Position Uncertainty:	0.0 ft	Slot Radius:	"	Grid Convergence:	0.42 °

Well	Casa Loma 18-25					
Well Position	+N/-S	45.2 ft	Northing:	1,444,059.37 ft	Latitude:	40.550535
	+E/-W	45.6 ft	Easting:	3,180,159.33 ft	Longitude:	-104.851687
Position Uncertainty		0.0 ft	Wellhead Elevation:	ft	Ground Level:	4,953.0 ft

Wellbore	Wellbore #1				
Magnetics	Model Name	Sample Date	Declination (°)	Dip Angle (°)	Field Strength (nT)
	IGRF2010	7/20/2012	8.78	67.12	53,084

Design	Plan #1 (7-16-12)			
Audit Notes:				
Version:	Phase:	PROTOTYPE	Tie On Depth:	0.0
Vertical Section:	Depth From (TVD) (ft)	+N/-S (ft)	+E/-W (ft)	Direction (°)
	0.0	0.0	0.0	112.70

Plan Sections										
Measured Depth (ft)	Inclination (°)	Azimuth (°)	Vertical Depth (ft)	+N/-S (ft)	+E/-W (ft)	Dogleg Rate (°/100ft)	Build Rate (°/100ft)	Turn Rate (°/100ft)	TFO (°)	Target
0.0	0.00	0.00	0.0	0.0	0.0	0.00	0.00	0.00	0.00	
200.0	0.00	0.00	200.0	0.0	0.0	0.00	0.00	0.00	0.00	
1,164.7	19.29	112.70	1,146.6	-62.1	148.4	2.00	2.00	0.00	112.70	
5,198.1	19.29	112.70	4,953.4	-576.5	1,377.8	0.00	0.00	0.00	0.00	
6,162.8	0.00	0.00	5,900.0	-638.6	1,526.3	2.00	-2.00	0.00	180.00	TARGET BHL 1315
7,742.8	0.00	0.00	7,480.0	-638.6	1,526.3	0.00	0.00	0.00	0.00	

Database:	Landmark	Local Co-ordinate Reference:	Well Casa Loma 18-25
Company:	BAYSWATER EXPLORATION & PRODUCTION	TVD Reference:	WELL @ 4969.0ft (Original Well Elev)
Project:	SEC.26-T7N-R67W	MD Reference:	WELL @ 4969.0ft (Original Well Elev)
Site:	Casa Loma 8 Pad Sec.26-T7N-R67W	North Reference:	True
Well:	Casa Loma 18-25	Survey Calculation Method:	Minimum Curvature
Wellbore:	Wellbore #1		
Design:	Plan #1 (7-16-12)		

Planned Survey

Measured Depth (ft)	Inclination (°)	Azimuth (°)	Vertical Depth (ft)	+N/-S (ft)	+E/-W (ft)	Vertical Section (ft)	Dogleg Rate (°/100ft)	Build Rate (°/100ft)	Turn Rate (°/100ft)
0.0	0.00	0.00	0.0	0.0	0.0	0.0	0.00	0.00	0.00
40.0	0.00	0.00	40.0	0.0	0.0	0.0	0.00	0.00	0.00
80.0	0.00	0.00	80.0	0.0	0.0	0.0	0.00	0.00	0.00
120.0	0.00	0.00	120.0	0.0	0.0	0.0	0.00	0.00	0.00
160.0	0.00	0.00	160.0	0.0	0.0	0.0	0.00	0.00	0.00
200.0	0.00	0.00	200.0	0.0	0.0	0.0	0.00	0.00	0.00
240.0	0.80	112.70	240.0	-0.1	0.3	0.3	2.00	2.00	0.00
280.0	1.60	112.70	280.0	-0.4	1.0	1.1	2.00	2.00	0.00
320.0	2.40	112.70	320.0	-1.0	2.3	2.5	2.00	2.00	0.00
360.0	3.20	112.70	359.9	-1.7	4.1	4.5	2.00	2.00	0.00
400.0	4.00	112.70	399.8	-2.7	6.4	7.0	2.00	2.00	0.00
440.0	4.80	112.70	439.7	-3.9	9.3	10.0	2.00	2.00	0.00
480.0	5.60	112.70	479.6	-5.3	12.6	13.7	2.00	2.00	0.00
520.0	6.40	112.70	519.3	-6.9	16.5	17.9	2.00	2.00	0.00
560.0	7.20	112.70	559.1	-8.7	20.8	22.6	2.00	2.00	0.00
600.0	8.00	112.70	598.7	-10.8	25.7	27.9	2.00	2.00	0.00
640.0	8.80	112.70	638.3	-13.0	31.1	33.7	2.00	2.00	0.00
680.0	9.60	112.70	677.8	-15.5	37.0	40.1	2.00	2.00	0.00
720.0	10.40	112.70	717.1	-18.2	43.4	47.1	2.00	2.00	0.00
722.9	10.46	112.70	720.0	-18.4	43.9	47.6	2.00	2.00	0.00
8 5/8"									
760.0	11.20	112.70	756.4	-21.1	50.3	54.6	2.00	2.00	0.00
800.0	12.00	112.70	795.6	-24.2	57.8	62.6	2.00	2.00	0.00
840.0	12.80	112.70	834.7	-27.5	65.7	71.2	2.00	2.00	0.00
880.0	13.60	112.70	873.6	-31.0	74.1	80.3	2.00	2.00	0.00
920.0	14.40	112.70	912.4	-34.7	83.0	90.0	2.00	2.00	0.00
960.0	15.20	112.70	951.1	-38.7	92.5	100.2	2.00	2.00	0.00
1,000.0	16.00	112.70	989.6	-42.8	102.4	111.0	2.00	2.00	0.00
1,040.0	16.80	112.70	1,028.0	-47.2	112.8	122.3	2.00	2.00	0.00
1,080.0	17.60	112.70	1,066.2	-51.8	123.7	134.1	2.00	2.00	0.00
1,120.0	18.40	112.70	1,104.3	-56.5	135.1	146.5	2.00	2.00	0.00
1,160.0	19.20	112.70	1,142.1	-61.5	147.0	159.3	2.00	2.00	0.00
1,164.7	19.29	112.70	1,146.6	-62.1	148.4	160.9	2.00	2.00	0.00
1,200.0	19.29	112.70	1,179.9	-66.6	159.2	172.6	0.00	0.00	0.00
1,240.0	19.29	112.70	1,217.6	-71.7	171.4	185.8	0.00	0.00	0.00
1,280.0	19.29	112.70	1,255.4	-76.8	183.6	199.0	0.00	0.00	0.00
1,320.0	19.29	112.70	1,293.1	-81.9	195.8	212.2	0.00	0.00	0.00
1,360.0	19.29	112.70	1,330.9	-87.0	208.0	225.4	0.00	0.00	0.00
1,400.0	19.29	112.70	1,368.7	-92.1	220.2	238.6	0.00	0.00	0.00
1,440.0	19.29	112.70	1,406.4	-97.2	232.3	251.9	0.00	0.00	0.00
1,480.0	19.29	112.70	1,444.2	-102.3	244.5	265.1	0.00	0.00	0.00
1,520.0	19.29	112.70	1,481.9	-107.4	256.7	278.3	0.00	0.00	0.00
1,560.0	19.29	112.70	1,519.7	-112.5	268.9	291.5	0.00	0.00	0.00
1,600.0	19.29	112.70	1,557.4	-117.6	281.1	304.7	0.00	0.00	0.00
1,640.0	19.29	112.70	1,595.2	-122.7	293.3	317.9	0.00	0.00	0.00
1,680.0	19.29	112.70	1,632.9	-127.8	305.5	331.2	0.00	0.00	0.00
1,720.0	19.29	112.70	1,670.7	-132.9	317.7	344.4	0.00	0.00	0.00
1,760.0	19.29	112.70	1,708.4	-138.0	329.9	357.6	0.00	0.00	0.00
1,800.0	19.29	112.70	1,746.2	-143.1	342.1	370.8	0.00	0.00	0.00
1,840.0	19.29	112.70	1,783.9	-148.2	354.3	384.0	0.00	0.00	0.00
1,880.0	19.29	112.70	1,821.7	-153.3	366.5	397.2	0.00	0.00	0.00
1,920.0	19.29	112.70	1,859.5	-158.4	378.7	410.5	0.00	0.00	0.00
1,960.0	19.29	112.70	1,897.2	-163.5	390.8	423.7	0.00	0.00	0.00

Database:	Landmark	Local Co-ordinate Reference:	Well Casa Loma 18-25
Company:	BAYSWATER EXPLORATION & PRODUCTION	TVD Reference:	WELL @ 4969.0ft (Original Well Elev)
Project:	SEC.26-T7N-R67W	MD Reference:	WELL @ 4969.0ft (Original Well Elev)
Site:	Casa Loma 8 Pad Sec.26-T7N-R67W	North Reference:	True
Well:	Casa Loma 18-25	Survey Calculation Method:	Minimum Curvature
Wellbore:	Wellbore #1		
Design:	Plan #1 (7-16-12)		

Planned Survey									
Measured Depth (ft)	Inclination (°)	Azimuth (°)	Vertical Depth (ft)	+N/-S (ft)	+E/-W (ft)	Vertical Section (ft)	Dogleg Rate (°/100ft)	Build Rate (°/100ft)	Turn Rate (°/100ft)
2,000.0	19.29	112.70	1,935.0	-168.6	403.0	436.9	0.00	0.00	0.00
2,040.0	19.29	112.70	1,972.7	-173.7	415.2	450.1	0.00	0.00	0.00
2,080.0	19.29	112.70	2,010.5	-178.8	427.4	463.3	0.00	0.00	0.00
2,120.0	19.29	112.70	2,048.2	-183.9	439.6	476.5	0.00	0.00	0.00
2,160.0	19.29	112.70	2,086.0	-189.0	451.8	489.8	0.00	0.00	0.00
2,200.0	19.29	112.70	2,123.7	-194.1	464.0	503.0	0.00	0.00	0.00
2,240.0	19.29	112.70	2,161.5	-199.2	476.2	516.2	0.00	0.00	0.00
2,280.0	19.29	112.70	2,199.2	-204.3	488.4	529.4	0.00	0.00	0.00
2,320.0	19.29	112.70	2,237.0	-209.4	500.6	542.6	0.00	0.00	0.00
2,360.0	19.29	112.70	2,274.7	-214.5	512.8	555.8	0.00	0.00	0.00
2,400.0	19.29	112.70	2,312.5	-219.6	525.0	569.1	0.00	0.00	0.00
2,440.0	19.29	112.70	2,350.2	-224.7	537.2	582.3	0.00	0.00	0.00
2,480.0	19.29	112.70	2,388.0	-229.8	549.3	595.5	0.00	0.00	0.00
2,520.0	19.29	112.70	2,425.8	-235.0	561.5	608.7	0.00	0.00	0.00
2,560.0	19.29	112.70	2,463.5	-240.1	573.7	621.9	0.00	0.00	0.00
2,600.0	19.29	112.70	2,501.3	-245.2	585.9	635.1	0.00	0.00	0.00
2,640.0	19.29	112.70	2,539.0	-250.3	598.1	648.4	0.00	0.00	0.00
2,680.0	19.29	112.70	2,576.8	-255.4	610.3	661.6	0.00	0.00	0.00
2,720.0	19.29	112.70	2,614.5	-260.5	622.5	674.8	0.00	0.00	0.00
2,760.0	19.29	112.70	2,652.3	-265.6	634.7	688.0	0.00	0.00	0.00
2,800.0	19.29	112.70	2,690.0	-270.7	646.9	701.2	0.00	0.00	0.00
2,840.0	19.29	112.70	2,727.8	-275.8	659.1	714.4	0.00	0.00	0.00
2,880.0	19.29	112.70	2,765.5	-280.9	671.3	727.7	0.00	0.00	0.00
2,920.0	19.29	112.70	2,803.3	-286.0	683.5	740.9	0.00	0.00	0.00
2,960.0	19.29	112.70	2,841.0	-291.1	695.7	754.1	0.00	0.00	0.00
3,000.0	19.29	112.70	2,878.8	-296.2	707.8	767.3	0.00	0.00	0.00
3,040.0	19.29	112.70	2,916.5	-301.3	720.0	780.5	0.00	0.00	0.00
3,080.0	19.29	112.70	2,954.3	-306.4	732.2	793.7	0.00	0.00	0.00
3,120.0	19.29	112.70	2,992.1	-311.5	744.4	807.0	0.00	0.00	0.00
3,160.0	19.29	112.70	3,029.8	-316.6	756.6	820.2	0.00	0.00	0.00
3,200.0	19.29	112.70	3,067.6	-321.7	768.8	833.4	0.00	0.00	0.00
3,240.0	19.29	112.70	3,105.3	-326.8	781.0	846.6	0.00	0.00	0.00
3,280.0	19.29	112.70	3,143.1	-331.9	793.2	859.8	0.00	0.00	0.00
3,320.0	19.29	112.70	3,180.8	-337.0	805.4	873.0	0.00	0.00	0.00
3,360.0	19.29	112.70	3,218.6	-342.1	817.6	886.3	0.00	0.00	0.00
3,400.0	19.29	112.70	3,256.3	-347.2	829.8	899.5	0.00	0.00	0.00
3,440.0	19.29	112.70	3,294.1	-352.3	842.0	912.7	0.00	0.00	0.00
3,480.0	19.29	112.70	3,331.8	-357.4	854.2	925.9	0.00	0.00	0.00
3,520.0	19.29	112.70	3,369.6	-362.5	866.3	939.1	0.00	0.00	0.00
3,560.0	19.29	112.70	3,407.3	-367.6	878.5	952.3	0.00	0.00	0.00
3,600.0	19.29	112.70	3,445.1	-372.7	890.7	965.6	0.00	0.00	0.00
3,640.0	19.29	112.70	3,482.8	-377.8	902.9	978.8	0.00	0.00	0.00
3,680.0	19.29	112.70	3,520.6	-382.9	915.1	992.0	0.00	0.00	0.00
3,720.0	19.29	112.70	3,558.4	-388.0	927.3	1,005.2	0.00	0.00	0.00
3,760.0	19.29	112.70	3,596.1	-393.1	939.5	1,018.4	0.00	0.00	0.00
3,773.7	19.29	112.70	3,609.0	-394.8	943.7	1,022.9	0.00	0.00	0.00
PARKMAN									
3,800.0	19.29	112.70	3,633.9	-398.2	951.7	1,031.6	0.00	0.00	0.00
3,840.0	19.29	112.70	3,671.6	-403.3	963.9	1,044.9	0.00	0.00	0.00
3,880.0	19.29	112.70	3,709.4	-408.4	976.1	1,058.1	0.00	0.00	0.00
3,920.0	19.29	112.70	3,747.1	-413.5	988.3	1,071.3	0.00	0.00	0.00
3,960.0	19.29	112.70	3,784.9	-418.6	1,000.5	1,084.5	0.00	0.00	0.00
4,000.0	19.29	112.70	3,822.6	-423.7	1,012.7	1,097.7	0.00	0.00	0.00

Database:	Landmark	Local Co-ordinate Reference:	Well Casa Loma 18-25
Company:	BAYSWATER EXPLORATION & PRODUCTION	TVD Reference:	WELL @ 4969.0ft (Original Well Elev)
Project:	SEC.26-T7N-R67W	MD Reference:	WELL @ 4969.0ft (Original Well Elev)
Site:	Casa Loma 8 Pad Sec.26-T7N-R67W	North Reference:	True
Well:	Casa Loma 18-25	Survey Calculation Method:	Minimum Curvature
Wellbore:	Wellbore #1		
Design:	Plan #1 (7-16-12)		

Planned Survey									
Measured Depth (ft)	Inclination (°)	Azimuth (°)	Vertical Depth (ft)	+N/-S (ft)	+E/-W (ft)	Vertical Section (ft)	Dogleg Rate (°/100ft)	Build Rate (°/100ft)	Turn Rate (°/100ft)
4,040.0	19.29	112.70	3,860.4	-428.8	1,024.8	1,110.9	0.00	0.00	0.00
4,080.0	19.29	112.70	3,898.1	-433.9	1,037.0	1,124.2	0.00	0.00	0.00
4,120.0	19.29	112.70	3,935.9	-439.0	1,049.2	1,137.4	0.00	0.00	0.00
4,160.0	19.29	112.70	3,973.6	-444.1	1,061.4	1,150.6	0.00	0.00	0.00
4,200.0	19.29	112.70	4,011.4	-449.2	1,073.6	1,163.8	0.00	0.00	0.00
4,240.0	19.29	112.70	4,049.2	-454.3	1,085.8	1,177.0	0.00	0.00	0.00
4,280.0	19.29	112.70	4,086.9	-459.4	1,098.0	1,190.2	0.00	0.00	0.00
4,320.0	19.29	112.70	4,124.7	-464.5	1,110.2	1,203.5	0.00	0.00	0.00
4,360.0	19.29	112.70	4,162.4	-469.6	1,122.4	1,216.7	0.00	0.00	0.00
4,400.0	19.29	112.70	4,200.2	-474.7	1,134.6	1,229.9	0.00	0.00	0.00
4,440.0	19.29	112.70	4,237.9	-479.8	1,146.8	1,243.1	0.00	0.00	0.00
4,480.0	19.29	112.70	4,275.7	-484.9	1,159.0	1,256.3	0.00	0.00	0.00
4,520.0	19.29	112.70	4,313.4	-490.0	1,171.2	1,269.5	0.00	0.00	0.00
4,560.0	19.29	112.70	4,351.2	-495.1	1,183.3	1,282.8	0.00	0.00	0.00
4,563.0	19.29	112.70	4,354.0	-495.5	1,184.3	1,283.7	0.00	0.00	0.00
SUSSEX									
4,600.0	19.29	112.70	4,388.9	-500.2	1,195.5	1,296.0	0.00	0.00	0.00
4,640.0	19.29	112.70	4,426.7	-505.3	1,207.7	1,309.2	0.00	0.00	0.00
4,680.0	19.29	112.70	4,464.4	-510.4	1,219.9	1,322.4	0.00	0.00	0.00
4,720.0	19.29	112.70	4,502.2	-515.5	1,232.1	1,335.6	0.00	0.00	0.00
4,760.0	19.29	112.70	4,539.9	-520.6	1,244.3	1,348.8	0.00	0.00	0.00
4,800.0	19.29	112.70	4,577.7	-525.7	1,256.5	1,362.0	0.00	0.00	0.00
4,840.0	19.29	112.70	4,615.5	-530.8	1,268.7	1,375.3	0.00	0.00	0.00
4,880.0	19.29	112.70	4,653.2	-535.9	1,280.9	1,388.5	0.00	0.00	0.00
4,920.0	19.29	112.70	4,691.0	-541.0	1,293.1	1,401.7	0.00	0.00	0.00
4,960.0	19.29	112.70	4,728.7	-546.1	1,305.3	1,414.9	0.00	0.00	0.00
4,965.6	19.29	112.70	4,734.0	-546.8	1,307.0	1,416.8	0.00	0.00	0.00
SHANNON									
5,000.0	19.29	112.70	4,766.5	-551.2	1,317.5	1,428.1	0.00	0.00	0.00
5,040.0	19.29	112.70	4,804.2	-556.3	1,329.7	1,441.3	0.00	0.00	0.00
5,080.0	19.29	112.70	4,842.0	-561.4	1,341.8	1,454.6	0.00	0.00	0.00
5,120.0	19.29	112.70	4,879.7	-566.5	1,354.0	1,467.8	0.00	0.00	0.00
5,160.0	19.29	112.70	4,917.5	-571.6	1,366.2	1,481.0	0.00	0.00	0.00
5,198.1	19.29	112.70	4,953.4	-576.5	1,377.8	1,493.6	0.00	0.00	0.00
5,200.0	19.26	112.70	4,955.2	-576.7	1,378.4	1,494.2	2.00	-2.00	0.00
5,240.0	18.46	112.70	4,993.1	-581.7	1,390.3	1,507.1	2.00	-2.00	0.00
5,280.0	17.66	112.70	5,031.1	-586.5	1,401.8	1,519.5	2.00	-2.00	0.00
5,320.0	16.86	112.70	5,069.3	-591.1	1,412.7	1,531.4	2.00	-2.00	0.00
5,360.0	16.06	112.70	5,107.7	-595.5	1,423.2	1,542.7	2.00	-2.00	0.00
5,400.0	15.26	112.70	5,146.2	-599.6	1,433.1	1,553.5	2.00	-2.00	0.00
5,440.0	14.46	112.70	5,184.9	-603.6	1,442.6	1,563.8	2.00	-2.00	0.00
5,480.0	13.66	112.70	5,223.7	-607.3	1,451.6	1,573.5	2.00	-2.00	0.00
5,520.0	12.86	112.70	5,262.6	-610.9	1,460.0	1,582.7	2.00	-2.00	0.00
5,560.0	12.06	112.70	5,301.7	-614.2	1,468.0	1,591.3	2.00	-2.00	0.00
5,600.0	11.26	112.70	5,340.8	-617.3	1,475.4	1,599.4	2.00	-2.00	0.00
5,640.0	10.46	112.70	5,380.1	-620.2	1,482.4	1,606.9	2.00	-2.00	0.00
5,680.0	9.66	112.70	5,419.5	-622.9	1,488.8	1,613.9	2.00	-2.00	0.00
5,720.0	8.86	112.70	5,459.0	-625.4	1,494.8	1,620.3	2.00	-2.00	0.00
5,760.0	8.06	112.70	5,498.5	-627.7	1,500.2	1,626.2	2.00	-2.00	0.00
5,800.0	7.26	112.70	5,538.2	-629.7	1,505.1	1,631.5	2.00	-2.00	0.00
5,840.0	6.46	112.70	5,577.9	-631.6	1,509.5	1,636.3	2.00	-2.00	0.00
5,880.0	5.66	112.70	5,617.7	-633.2	1,513.4	1,640.5	2.00	-2.00	0.00
5,920.0	4.86	112.70	5,657.5	-634.6	1,516.8	1,644.2	2.00	-2.00	0.00

Database:	Landmark	Local Co-ordinate Reference:	Well Casa Loma 18-25
Company:	BAYSWATER EXPLORATION & PRODUCTION	TVD Reference:	WELL @ 4969.0ft (Original Well Elev)
Project:	SEC.26-T7N-R67W	MD Reference:	WELL @ 4969.0ft (Original Well Elev)
Site:	Casa Loma 8 Pad Sec.26-T7N-R67W	North Reference:	True
Well:	Casa Loma 18-25	Survey Calculation Method:	Minimum Curvature
Wellbore:	Wellbore #1		
Design:	Plan #1 (7-16-12)		

Planned Survey									
Measured Depth (ft)	Inclination (°)	Azimuth (°)	Vertical Depth (ft)	+N/-S (ft)	+E/-W (ft)	Vertical Section (ft)	Dogleg Rate (°/100ft)	Build Rate (°/100ft)	Turn Rate (°/100ft)
5,960.0	4.06	112.70	5,697.4	-635.8	1,519.7	1,647.3	2.00	-2.00	0.00
6,000.0	3.26	112.70	5,737.3	-636.8	1,522.0	1,649.9	2.00	-2.00	0.00
6,040.0	2.46	112.70	5,777.2	-637.6	1,523.8	1,651.9	2.00	-2.00	0.00
6,080.0	1.66	112.70	5,817.2	-638.1	1,525.2	1,653.3	2.00	-2.00	0.00
6,120.0	0.86	112.70	5,857.2	-638.5	1,526.0	1,654.2	2.00	-2.00	0.00
6,160.0	0.06	112.70	5,897.2	-638.6	1,526.3	1,654.5	2.00	-2.00	0.00
6,162.8	0.00	0.00	5,900.0	-638.6	1,526.3	1,654.5	2.00	-2.00	0.00
6,200.0	0.00	0.00	5,937.2	-638.6	1,526.3	1,654.5	0.00	0.00	0.00
6,240.0	0.00	0.00	5,977.2	-638.6	1,526.3	1,654.5	0.00	0.00	0.00
6,280.0	0.00	0.00	6,017.2	-638.6	1,526.3	1,654.5	0.00	0.00	0.00
6,320.0	0.00	0.00	6,057.2	-638.6	1,526.3	1,654.5	0.00	0.00	0.00
6,360.0	0.00	0.00	6,097.2	-638.6	1,526.3	1,654.5	0.00	0.00	0.00
6,400.0	0.00	0.00	6,137.2	-638.6	1,526.3	1,654.5	0.00	0.00	0.00
6,440.0	0.00	0.00	6,177.2	-638.6	1,526.3	1,654.5	0.00	0.00	0.00
6,480.0	0.00	0.00	6,217.2	-638.6	1,526.3	1,654.5	0.00	0.00	0.00
6,520.0	0.00	0.00	6,257.2	-638.6	1,526.3	1,654.5	0.00	0.00	0.00
6,560.0	0.00	0.00	6,297.2	-638.6	1,526.3	1,654.5	0.00	0.00	0.00
6,600.0	0.00	0.00	6,337.2	-638.6	1,526.3	1,654.5	0.00	0.00	0.00
6,640.0	0.00	0.00	6,377.2	-638.6	1,526.3	1,654.5	0.00	0.00	0.00
6,680.0	0.00	0.00	6,417.2	-638.6	1,526.3	1,654.5	0.00	0.00	0.00
6,720.0	0.00	0.00	6,457.2	-638.6	1,526.3	1,654.5	0.00	0.00	0.00
6,760.0	0.00	0.00	6,497.2	-638.6	1,526.3	1,654.5	0.00	0.00	0.00
6,800.0	0.00	0.00	6,537.2	-638.6	1,526.3	1,654.5	0.00	0.00	0.00
6,840.0	0.00	0.00	6,577.2	-638.6	1,526.3	1,654.5	0.00	0.00	0.00
6,880.0	0.00	0.00	6,617.2	-638.6	1,526.3	1,654.5	0.00	0.00	0.00
6,920.0	0.00	0.00	6,657.2	-638.6	1,526.3	1,654.5	0.00	0.00	0.00
6,960.0	0.00	0.00	6,697.2	-638.6	1,526.3	1,654.5	0.00	0.00	0.00
7,000.0	0.00	0.00	6,737.2	-638.6	1,526.3	1,654.5	0.00	0.00	0.00
7,040.0	0.00	0.00	6,777.2	-638.6	1,526.3	1,654.5	0.00	0.00	0.00
7,080.0	0.00	0.00	6,817.2	-638.6	1,526.3	1,654.5	0.00	0.00	0.00
7,120.0	0.00	0.00	6,857.2	-638.6	1,526.3	1,654.5	0.00	0.00	0.00
7,160.0	0.00	0.00	6,897.2	-638.6	1,526.3	1,654.5	0.00	0.00	0.00
7,200.0	0.00	0.00	6,937.2	-638.6	1,526.3	1,654.5	0.00	0.00	0.00
7,240.0	0.00	0.00	6,977.2	-638.6	1,526.3	1,654.5	0.00	0.00	0.00
7,280.0	0.00	0.00	7,017.2	-638.6	1,526.3	1,654.5	0.00	0.00	0.00
7,286.8	0.00	0.00	7,024.0	-638.6	1,526.3	1,654.5	0.00	0.00	0.00
NIOBRARA									
7,320.0	0.00	0.00	7,057.2	-638.6	1,526.3	1,654.5	0.00	0.00	0.00
7,360.0	0.00	0.00	7,097.2	-638.6	1,526.3	1,654.5	0.00	0.00	0.00
7,400.0	0.00	0.00	7,137.2	-638.6	1,526.3	1,654.5	0.00	0.00	0.00
7,440.0	0.00	0.00	7,177.2	-638.6	1,526.3	1,654.5	0.00	0.00	0.00
7,480.0	0.00	0.00	7,217.2	-638.6	1,526.3	1,654.5	0.00	0.00	0.00
7,520.0	0.00	0.00	7,257.2	-638.6	1,526.3	1,654.5	0.00	0.00	0.00
7,551.8	0.00	0.00	7,289.0	-638.6	1,526.3	1,654.5	0.00	0.00	0.00
FORT HAYS									
7,560.0	0.00	0.00	7,297.2	-638.6	1,526.3	1,654.5	0.00	0.00	0.00
7,591.8	0.00	0.00	7,329.0	-638.6	1,526.3	1,654.5	0.00	0.00	0.00
CODELL									
7,600.0	0.00	0.00	7,337.2	-638.6	1,526.3	1,654.5	0.00	0.00	0.00
7,640.0	0.00	0.00	7,377.2	-638.6	1,526.3	1,654.5	0.00	0.00	0.00
7,641.8	0.00	0.00	7,379.0	-638.6	1,526.3	1,654.5	0.00	0.00	0.00
GREENHORN									

Database:	Landmark	Local Co-ordinate Reference:	Well Casa Loma 18-25
Company:	BAYSWATER EXPLORATION & PRODUCTION	TVD Reference:	WELL @ 4969.0ft (Original Well Elev)
Project:	SEC.26-T7N-R67W	MD Reference:	WELL @ 4969.0ft (Original Well Elev)
Site:	Casa Loma 8 Pad Sec.26-T7N-R67W	North Reference:	True
Well:	Casa Loma 18-25	Survey Calculation Method:	Minimum Curvature
Wellbore:	Wellbore #1		
Design:	Plan #1 (7-16-12)		

Planned Survey

Measured Depth (ft)	Inclination (°)	Azimuth (°)	Vertical Depth (ft)	+N/-S (ft)	+E/-W (ft)	Vertical Section (ft)	Dogleg Rate (°/100ft)	Build Rate (°/100ft)	Turn Rate (°/100ft)
7,680.0	0.00	0.00	7,417.2	-638.6	1,526.3	1,654.5	0.00	0.00	0.00
7,720.0	0.00	0.00	7,457.2	-638.6	1,526.3	1,654.5	0.00	0.00	0.00
7,726.8	0.00	0.00	7,464.0	-638.6	1,526.3	1,654.5	0.00	0.00	0.00
GRANEROS									
7,742.8	0.00	0.00	7,480.0	-638.6	1,526.3	1,654.5	0.00	0.00	0.00

Casing Points

Measured Depth (ft)	Vertical Depth (ft)	Name	Casing Diameter (")	Hole Diameter (")
722.9	720.0	8 5/8"	8-5/8	12-1/4

Formations

Measured Depth (ft)	Vertical Depth (ft)	Name	Lithology	Dip (°)	Dip Direction (°)
3,773.7	3,609.0	PARKMAN		0.00	
4,563.0	4,354.0	SUSSEX		0.00	
4,965.6	4,734.0	SHANNON		0.00	
7,286.8	7,024.0	NIOBRARA		0.00	
7,551.8	7,289.0	FORT HAYS		0.00	
7,591.8	7,329.0	CODELL		0.00	
7,641.8	7,379.0	GREENHORN		0.00	
7,726.8	7,464.0	GRANEROS		0.00	



Directional

BAYSWATER EXPLORATION & PRODUCTION

SEC.26-T7N-R67W

Casa Loma 8 Pad Sec.26-T7N-R67W

Casa Loma 18-25

Wellbore #1

Plan #1 (7-16-12)

Anticollision Report

20 July, 2012

Company:	BAYSWATER EXPLORATION & PRODUCTION	Local Co-ordinate Reference:	Well Casa Loma 18-25
Project:	SEC.26-T7N-R67W	TVD Reference:	WELL @ 4969.0ft (Original Well Elev)
Reference Site:	Casa Loma 8 Pad Sec.26-T7N-R67W	MD Reference:	WELL @ 4969.0ft (Original Well Elev)
Site Error:	0.0ft	North Reference:	True
Reference Well:	Casa Loma 18-25	Survey Calculation Method:	Minimum Curvature
Well Error:	0.0ft	Output errors are at	2.00 sigma
Reference Wellbore	Wellbore #1	Database:	Landmark
Reference Design:	Plan #1 (7-16-12)	Offset TVD Reference:	Offset Datum

Offset Design Casa Loma 8 Pad Sec.26-T7N-R67W - Casa Loma 21-25 - Wellbore #1 - Plan #1 (7-13-12)													Offset Site Error:	0.0 ft
Survey Program: 0-MWD													Offset Well Error:	0.0 ft
Measured Depth (ft)	Vertical Depth (ft)	Measured Depth (ft)	Vertical Depth (ft)	Reference	Offset	Highside Toolface (°)	Offset Wellbore Centre +N/-S (ft)	+E/-W (ft)	Between Centres (ft)	Between Ellipses (ft)	Minimum Separation (ft)	Separation Factor	Warning	
2,000.0	1,935.0	1,983.5	1,881.0	9.8	11.6	-46.66	-107.1	517.9	141.1	124.6	16.49	8.555		
2,100.0	2,029.3	2,081.9	1,967.2	10.5	12.7	-44.46	-117.8	564.2	158.0	140.7	17.32	9.123		
2,200.0	2,123.7	2,180.3	2,053.4	11.2	13.7	-42.68	-128.6	610.4	175.1	157.0	18.17	9.641		
2,300.0	2,218.1	2,278.7	2,139.6	11.9	14.8	-41.22	-139.4	656.6	192.4	173.4	19.02	10.115		
2,400.0	2,312.5	2,377.1	2,225.7	12.6	15.8	-40.00	-150.2	702.9	209.8	189.9	19.89	10.547		
2,500.0	2,406.9	2,475.5	2,311.9	13.3	16.9	-38.96	-160.9	749.1	227.2	206.5	20.77	10.942		
2,600.0	2,501.3	2,573.9	2,398.1	14.0	17.9	-38.08	-171.7	795.3	244.7	223.1	21.65	11.304		
2,700.0	2,595.6	2,672.3	2,484.3	14.7	19.0	-37.31	-182.5	841.6	262.3	239.7	22.54	11.637		
2,800.0	2,690.0	2,770.6	2,570.5	15.4	20.0	-36.64	-193.2	887.8	279.9	256.4	23.43	11.944		
2,900.0	2,784.4	2,869.0	2,656.6	16.1	21.1	-36.05	-204.0	934.0	297.5	273.2	24.33	12.227		
3,000.0	2,878.8	2,967.4	2,742.8	16.9	22.1	-35.52	-214.8	980.3	315.2	289.9	25.24	12.489		
3,100.0	2,973.2	3,065.8	2,829.0	17.6	23.2	-35.05	-225.5	1,026.5	332.8	306.7	26.14	12.732		
3,200.0	3,067.6	3,164.2	2,915.2	18.3	24.2	-34.63	-236.3	1,072.7	350.5	323.5	27.05	12.958		
3,300.0	3,161.9	3,262.6	3,001.4	19.0	25.3	-34.25	-247.1	1,119.0	368.3	340.3	27.96	13.169		
3,400.0	3,256.3	3,361.0	3,087.5	19.7	26.4	-33.90	-257.9	1,165.2	386.0	357.1	28.88	13.366		
3,500.0	3,350.7	3,459.4	3,173.7	20.4	27.4	-33.58	-268.6	1,211.4	403.7	373.9	29.80	13.550		
3,600.0	3,445.1	3,557.8	3,259.9	21.1	28.5	-33.29	-279.4	1,257.7	421.5	390.8	30.71	13.723		
3,700.0	3,539.5	3,656.2	3,346.1	21.8	29.5	-33.03	-290.2	1,303.9	439.2	407.6	31.63	13.885		
3,800.0	3,633.9	3,754.5	3,432.3	22.5	30.6	-32.78	-300.9	1,350.1	457.0	424.5	32.55	14.038		
3,900.0	3,728.2	3,852.9	3,518.4	23.2	31.7	-32.55	-311.7	1,396.4	474.8	441.3	33.48	14.182		
4,000.0	3,822.6	3,951.3	3,604.6	24.0	32.7	-32.34	-322.5	1,442.6	492.6	458.2	34.40	14.319		
4,100.0	3,917.0	4,049.7	3,690.8	24.7	33.8	-32.15	-333.3	1,488.8	510.4	475.0	35.33	14.447		
4,200.0	4,011.4	4,148.1	3,777.0	25.4	34.8	-31.96	-344.0	1,535.1	528.2	491.9	36.25	14.569		
4,300.0	4,105.8	4,246.5	3,863.2	26.1	35.9	-31.79	-354.8	1,581.3	546.0	508.8	37.18	14.685		
4,400.0	4,200.2	4,344.9	3,949.3	26.8	37.0	-31.63	-365.6	1,627.5	563.8	525.7	38.11	14.795		
4,500.0	4,294.5	4,443.3	4,035.5	27.5	38.0	-31.48	-376.3	1,673.8	581.6	542.5	39.04	14.899		
4,600.0	4,388.9	4,541.7	4,121.7	28.2	39.1	-31.34	-387.1	1,720.0	599.4	559.4	39.96	14.998		
4,700.0	4,483.3	4,640.1	4,207.9	28.9	40.2	-31.21	-397.9	1,766.2	617.2	576.3	40.89	15.093		
4,800.0	4,577.7	4,738.4	4,294.1	29.6	41.2	-31.08	-408.7	1,812.5	635.0	593.2	41.82	15.183		
4,900.0	4,672.1	4,836.8	4,380.2	30.3	42.3	-30.96	-419.4	1,858.7	652.9	610.1	42.76	15.270		
5,000.0	4,766.5	4,935.2	4,466.4	31.1	43.3	-30.85	-430.2	1,904.9	670.7	627.0	43.69	15.352		
5,100.0	4,860.9	5,033.6	4,552.6	31.8	44.4	-30.74	-441.0	1,951.2	688.5	643.9	44.62	15.431		
5,198.1	4,953.4	5,130.1	4,637.1	32.5	45.4	-30.64	-451.5	1,996.5	706.0	660.5	45.53	15.505		
5,200.0	4,955.2	5,132.0	4,638.8	32.5	45.5	-30.65	-451.7	1,997.4	706.3	660.8	45.55	15.507		
5,300.0	5,050.2	5,230.1	4,724.7	33.0	46.5	-30.68	-462.5	2,043.5	725.7	679.3	46.36	15.654		
5,400.0	5,146.2	5,327.5	4,810.0	33.5	47.6	-30.61	-473.1	2,089.3	748.0	701.0	47.04	15.901		
5,500.0	5,243.1	5,424.1	4,894.6	33.9	48.6	-30.46	-483.7	2,134.7	773.3	725.7	47.60	16.246		
5,600.0	5,340.8	5,519.8	4,978.4	34.2	49.6	-30.24	-494.2	2,179.6	801.5	753.4	48.04	16.685		
5,700.0	5,439.2	5,614.4	5,061.3	34.6	50.7	-29.96	-504.5	2,224.1	832.6	784.3	48.37	17.215		
5,800.0	5,538.2	5,707.9	5,143.2	34.8	51.7	-29.64	-514.8	2,268.0	866.8	818.2	48.59	17.837		
5,900.0	5,637.6	5,800.2	5,224.0	35.0	52.7	-29.29	-524.9	2,311.4	903.8	855.1	48.73	18.548		
6,000.0	5,737.3	5,891.1	5,303.6	35.2	53.7	-28.92	-534.8	2,354.1	943.8	895.1	48.78	19.349		
6,100.0	5,837.2	5,980.5	5,381.9	35.3	54.6	-28.54	-544.6	2,396.1	986.8	938.0	48.76	20.238		
6,162.8	5,900.0	6,043.2	5,436.9	35.4	55.3	84.47	-551.5	2,425.5	1,015.2	966.5	48.68	20.853		
6,200.0	5,937.2	6,093.2	5,481.1	35.4	55.8	84.93	-556.8	2,448.3	1,031.9	983.4	48.55	21.257		
6,300.0	6,037.2	6,232.2	5,606.0	35.5	56.9	86.04	-570.6	2,507.7	1,074.1	1,025.9	48.24	22.269		
6,400.0	6,137.2	6,377.7	5,739.8	35.5	57.9	86.96	-583.6	2,563.5	1,112.1	1,064.0	48.07	23.136		
6,500.0	6,237.2	6,529.3	5,882.0	35.6	58.8	87.73	-595.5	2,614.5	1,145.5	1,097.5	48.02	23.856		
6,600.0	6,337.2	6,686.5	6,032.3	35.7	59.6	88.35	-606.0	2,659.5	1,174.0	1,125.9	48.06	24.426		
6,700.0	6,437.2	6,848.7	6,189.6	35.8	60.3	88.84	-614.8	2,697.5	1,197.4	1,149.2	48.18	24.850		
6,800.0	6,537.2	7,015.0	6,353.0	35.9	60.8	89.20	-621.8	2,727.4	1,215.3	1,166.9	48.36	25.129		

CC - Min centre to center distance or convergent point, SF - min separation factor, ES - min ellipse separation

Company:	BAYSWATER EXPLORATION & PRODUCTION	Local Co-ordinate Reference:	Well Casa Loma 18-25
Project:	SEC.26-T7N-R67W	TVD Reference:	WELL @ 4969.0ft (Original Well Elev)
Reference Site:	Casa Loma 8 Pad Sec.26-T7N-R67W	MD Reference:	WELL @ 4969.0ft (Original Well Elev)
Site Error:	0.0ft	North Reference:	True
Reference Well:	Casa Loma 18-25	Survey Calculation Method:	Minimum Curvature
Well Error:	0.0ft	Output errors are at	2.00 sigma
Reference Wellbore	Wellbore #1	Database:	Landmark
Reference Design:	Plan #1 (7-16-12)	Offset TVD Reference:	Offset Datum

Offset Design Casa Loma 8 Pad Sec.26-T7N-R67W - Casa Loma 21-25 - Wellbore #1 - Plan #1 (7-13-12)													Offset Site Error:	0.0 ft
Survey Program: 0-MWD													Offset Well Error:	0.0 ft
Measured Depth (ft)	Vertical Depth (ft)	Measured Depth (ft)	Vertical Depth (ft)	Semi Major Axis		Highside Toolface (°)	Offset Wellbore Centre		Distance		Minimum Separation (ft)	Separation Factor	Warning	
Reference	Offset	Reference	Offset	Reference	Offset		+N/-S (ft)	+E/-W (ft)	Between Centres (ft)	Between Ellipses (ft)				
6,900.0	6,637.2	7,184.3	6,521.0	35.9	61.2	89.44	-626.7	2,748.3	1,227.6	1,179.0	48.58	25.268		
7,000.0	6,737.2	7,355.7	6,692.0	36.0	61.4	89.57	-629.3	2,759.6	1,234.2	1,185.3	48.84	25.272		
7,100.0	6,837.2	7,501.0	6,837.2	36.1	61.5	89.59	-629.8	2,761.6	1,235.3	1,186.2	49.10	25.159		
7,200.0	6,937.2	7,601.0	6,937.2	36.2	61.6	89.59	-629.8	2,761.6	1,235.3	1,186.0	49.33	25.043		
7,300.0	7,037.2	7,701.0	7,037.2	36.3	61.6	89.59	-629.8	2,761.6	1,235.3	1,185.8	49.56	24.925		
7,400.0	7,137.2	7,801.0	7,137.2	36.4	61.7	89.59	-629.8	2,761.6	1,235.3	1,185.5	49.80	24.808		
7,500.0	7,237.2	7,901.0	7,237.2	36.5	61.7	89.59	-629.8	2,761.6	1,235.3	1,185.3	50.03	24.690		
7,600.0	7,337.2	8,001.0	7,337.2	36.6	61.8	89.59	-629.8	2,761.6	1,235.3	1,185.1	50.28	24.571		
7,700.0	7,437.2	8,101.0	7,437.2	36.6	61.9	89.59	-629.8	2,761.6	1,235.3	1,184.8	50.52	24.453		
7,742.8	7,480.0	8,143.8	7,480.0	36.7	61.9	89.59	-629.8	2,761.6	1,235.3	1,184.7	50.62	24.402		

Company:	BAYSWATER EXPLORATION & PRODUCTION	Local Co-ordinate Reference:	Well Casa Loma 18-25
Project:	SEC.26-T7N-R67W	TVD Reference:	WELL @ 4969.0ft (Original Well Elev)
Reference Site:	Casa Loma 8 Pad Sec.26-T7N-R67W	MD Reference:	WELL @ 4969.0ft (Original Well Elev)
Site Error:	0.0ft	North Reference:	True
Reference Well:	Casa Loma 18-25	Survey Calculation Method:	Minimum Curvature
Well Error:	0.0ft	Output errors are at	2.00 sigma
Reference Wellbore	Wellbore #1	Database:	Landmark
Reference Design:	Plan #1 (7-16-12)	Offset TVD Reference:	Offset Datum

Offset Design Casa Loma 8 Pad Sec.26-T7N-R67W - Casa Loma 6-25 - Wellbore #1 - Plan #1 (7-16-12)													Offset Site Error:	0.0 ft
Survey Program: 0-MWD													Offset Well Error:	0.0 ft
Measured Depth (ft)	Vertical Depth (ft)	Measured Depth (ft)	Vertical Depth (ft)	Reference	Offset	Highside Toolface (°)	Offset Wellbore Centre +N/-S (ft)	+E/-W (ft)	Between Centres (ft)	Between Ellipses (ft)	Minimum Separation (ft)	Separation Factor	Warning	
0.0	0.0	0.0	0.0	0.0	0.0	-134.75	-11.3	-11.4	16.0	16.0	0.00	N/A		
100.0	100.0	100.0	100.0	0.1	0.1	-134.75	-11.3	-11.4	16.0	15.8	0.22	71.376		
200.0	200.0	200.0	200.0	0.3	0.3	-134.75	-11.3	-11.4	16.0	15.4	0.67	23.792 CC		
300.0	300.0	300.1	300.1	0.5	0.5	112.27	-12.2	-9.9	16.3	15.2	1.09	14.877 ES		
400.0	399.8	400.3	400.1	0.8	0.8	111.49	-14.8	-5.4	16.9	15.4	1.53	11.088		
500.0	499.5	500.4	499.9	1.0	1.0	110.31	-19.2	2.2	18.0	16.0	2.02	8.916		
600.0	598.7	600.5	599.2	1.3	1.3	108.88	-25.4	12.7	19.6	17.0	2.59	7.546		
700.0	697.5	700.7	698.1	1.6	1.6	107.35	-33.3	26.3	21.6	18.3	3.26	6.618		
800.0	795.6	800.7	796.4	2.0	2.0	105.83	-43.0	42.8	24.1	20.0	4.04	5.954		
900.0	893.1	900.8	893.8	2.5	2.5	104.38	-54.4	62.2	27.0	22.0	4.94	5.462		
1,000.0	989.6	1,000.9	990.5	3.0	3.0	103.06	-67.4	84.6	30.4	24.4	5.97	5.087		
1,100.0	1,085.3	1,100.9	1,086.1	3.6	3.6	101.87	-82.2	109.9	34.2	27.1	7.14	4.792		
1,164.7	1,146.6	1,165.6	1,147.4	4.0	4.0	101.17	-92.7	127.7	36.9	29.0	7.97	4.630		
1,200.0	1,179.9	1,200.9	1,180.7	4.2	4.2	100.53	-98.7	138.0	38.4	30.0	8.45	4.553		
1,300.0	1,274.3	1,300.8	1,273.9	4.9	5.0	95.80	-116.8	168.9	42.8	32.9	9.87	4.334		
1,400.0	1,368.7	1,400.3	1,365.5	5.6	5.8	87.82	-136.4	202.5	47.8	36.5	11.30	4.230 SF		
1,500.0	1,463.0	1,499.2	1,455.2	6.3	6.6	78.02	-157.5	238.6	54.6	42.0	12.54	4.352		
1,600.0	1,557.4	1,597.7	1,543.0	7.0	7.6	67.98	-180.0	277.0	64.1	50.7	13.47	4.762		
1,700.0	1,651.8	1,696.6	1,630.8	7.7	8.5	60.17	-202.9	316.2	75.6	61.4	14.21	5.323		
1,800.0	1,746.2	1,795.5	1,718.7	8.4	9.5	54.48	-225.8	355.4	88.2	73.3	14.90	5.915		
1,900.0	1,840.6	1,894.4	1,806.5	9.1	10.5	50.22	-248.8	394.6	101.3	85.7	15.60	6.497		
2,000.0	1,935.0	1,993.2	1,894.4	9.8	11.5	46.96	-271.7	433.8	114.9	98.6	16.31	7.049		
2,100.0	2,029.3	2,092.1	1,982.2	10.5	12.5	44.39	-294.6	472.9	128.8	111.8	17.03	7.562		
2,200.0	2,123.7	2,191.0	2,070.0	11.2	13.4	42.32	-317.5	512.1	142.9	125.1	17.78	8.038		
2,300.0	2,218.1	2,289.9	2,157.9	11.9	14.4	40.62	-340.4	551.3	157.1	138.6	18.54	8.475		
2,400.0	2,312.5	2,388.8	2,245.7	12.6	15.4	39.21	-363.4	590.5	171.5	152.2	19.32	8.877		
2,500.0	2,406.9	2,487.7	2,333.6	13.3	16.4	38.01	-386.3	629.7	185.9	165.8	20.11	9.247		
2,600.0	2,501.3	2,586.5	2,421.4	14.0	17.4	36.99	-409.2	668.9	200.4	179.5	20.91	9.588		
2,700.0	2,595.6	2,685.4	2,509.3	14.7	18.4	36.11	-432.1	708.1	215.0	193.3	21.71	9.902		
2,800.0	2,690.0	2,784.3	2,597.1	15.4	19.4	35.33	-455.1	747.3	229.6	207.1	22.53	10.193		
2,900.0	2,784.4	2,883.2	2,685.0	16.1	20.4	34.65	-478.0	786.5	244.2	220.9	23.35	10.462		
3,000.0	2,878.8	2,982.1	2,772.8	16.9	21.4	34.05	-500.9	825.7	258.9	234.7	24.17	10.712		
3,100.0	2,973.2	3,081.0	2,860.6	17.6	22.4	33.51	-523.8	864.9	273.6	248.6	25.00	10.944		
3,200.0	3,067.6	3,179.8	2,948.5	18.3	23.4	33.03	-546.8	904.0	288.3	262.5	25.84	11.160		
3,300.0	3,161.9	3,278.7	3,036.3	19.0	24.4	32.59	-569.7	943.2	303.1	276.4	26.67	11.362		
3,400.0	3,256.3	3,377.6	3,124.2	19.7	25.4	32.20	-592.6	982.4	317.8	290.3	27.51	11.551		
3,500.0	3,350.7	3,476.5	3,212.0	20.4	26.4	31.84	-615.5	1,021.6	332.6	304.2	28.36	11.728		
3,600.0	3,445.1	3,575.4	3,299.9	21.1	27.3	31.51	-638.5	1,060.8	347.3	318.1	29.20	11.895		
3,700.0	3,539.5	3,674.3	3,387.7	21.8	28.3	31.20	-661.4	1,100.0	362.1	332.1	30.05	12.051		
3,800.0	3,633.9	3,773.1	3,475.6	22.5	29.3	30.92	-684.3	1,139.2	376.9	346.0	30.90	12.199		
3,900.0	3,728.2	3,872.0	3,563.4	23.2	30.3	30.66	-707.2	1,178.4	391.7	360.0	31.75	12.338		
4,000.0	3,822.6	3,970.9	3,651.2	24.0	31.3	30.43	-730.1	1,217.6	406.5	373.9	32.60	12.470		
4,100.0	3,917.0	4,069.8	3,739.1	24.7	32.3	30.20	-753.1	1,256.8	421.4	387.9	33.46	12.594		
4,200.0	4,011.4	4,168.7	3,826.9	25.4	33.3	29.99	-776.0	1,296.0	436.2	401.9	34.31	12.712		
4,300.0	4,105.8	4,267.6	3,914.8	26.1	34.3	29.80	-798.9	1,335.1	451.0	415.8	35.17	12.824		
4,400.0	4,200.2	4,366.4	4,002.6	26.8	35.3	29.62	-821.8	1,374.3	465.8	429.8	36.03	12.930		
4,500.0	4,294.5	4,465.3	4,090.5	27.5	36.3	29.45	-844.8	1,413.5	480.7	443.8	36.89	13.032		
4,600.0	4,388.9	4,564.2	4,178.3	28.2	37.3	29.29	-867.7	1,452.7	495.5	457.8	37.74	13.128		
4,700.0	4,483.3	4,663.1	4,266.1	28.9	38.3	29.14	-890.6	1,491.9	510.4	471.8	38.61	13.220		
4,800.0	4,577.7	4,762.0	4,354.0	29.6	39.3	29.00	-913.5	1,531.1	525.2	485.7	39.47	13.308		
4,900.0	4,672.1	4,860.9	4,441.8	30.3	40.3	28.86	-936.5	1,570.3	540.1	499.7	40.33	13.392		

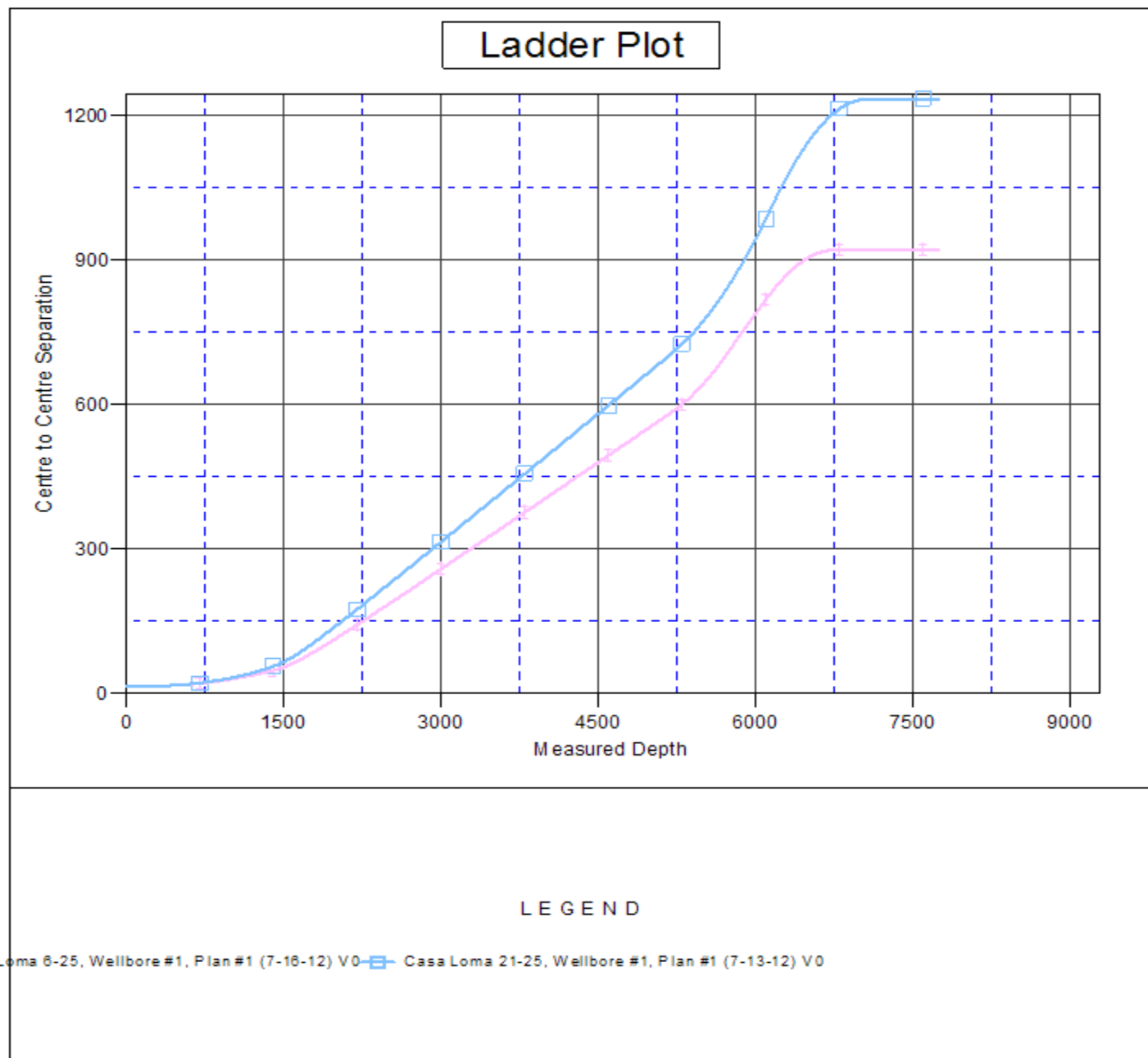
CC - Min centre to center distance or convergent point, SF - min separation factor, ES - min ellipse separation

Company:	BAYSWATER EXPLORATION & PRODUCTION	Local Co-ordinate Reference:	Well Casa Loma 18-25
Project:	SEC.26-T7N-R67W	TVD Reference:	WELL @ 4969.0ft (Original Well Elev)
Reference Site:	Casa Loma 8 Pad Sec.26-T7N-R67W	MD Reference:	WELL @ 4969.0ft (Original Well Elev)
Site Error:	0.0ft	North Reference:	True
Reference Well:	Casa Loma 18-25	Survey Calculation Method:	Minimum Curvature
Well Error:	0.0ft	Output errors are at	2.00 sigma
Reference Wellbore	Wellbore #1	Database:	Landmark
Reference Design:	Plan #1 (7-16-12)	Offset TVD Reference:	Offset Datum

Offset Design Casa Loma 8 Pad Sec.26-T7N-R67W - Casa Loma 6-25 - Wellbore #1 - Plan #1 (7-16-12)													Offset Site Error:	0.0 ft
Survey Program: 0-MWD													Offset Well Error:	0.0 ft
Measured Depth (ft)	Vertical Depth (ft)	Measured Depth (ft)	Vertical Depth (ft)	Reference	Offset	Highside Toolface (°)	Offset Wellbore Centre +N/-S (ft)	Offset Wellbore Centre +E/-W (ft)	Between Centres (ft)	Between Ellipses (ft)	Minimum Separation (ft)	Separation Factor	Warning	
5,000.0	4,766.5	4,959.7	4,529.7	31.1	41.3	28.73	-959.4	1,609.5	554.9	513.7	41.19	13.472		
5,100.0	4,860.9	5,058.6	4,617.5	31.8	42.3	28.61	-982.3	1,648.7	569.8	527.7	42.05	13.549		
5,198.1	4,953.4	5,155.6	4,703.7	32.5	43.3	28.50	-1,004.8	1,687.1	584.3	541.4	42.90	13.621		
5,200.0	4,955.2	5,157.5	4,705.4	32.5	43.3	28.50	-1,005.2	1,687.9	584.6	541.7	42.92	13.622		
5,300.0	5,050.2	5,256.1	4,793.0	33.0	44.3	28.47	-1,028.1	1,726.9	601.1	557.4	43.68	13.762		
5,400.0	5,146.2	5,354.1	4,880.0	33.5	45.3	28.32	-1,050.8	1,765.8	620.5	576.2	44.30	14.008		
5,500.0	5,243.1	5,451.4	4,966.5	33.9	46.3	28.07	-1,073.4	1,804.4	643.0	598.2	44.79	14.357		
5,600.0	5,340.8	5,547.9	5,052.2	34.2	47.3	27.74	-1,095.7	1,842.6	668.6	623.4	45.16	14.806		
5,700.0	5,439.2	5,643.4	5,137.0	34.6	48.2	27.35	-1,117.9	1,880.4	697.2	651.7	45.41	15.353		
5,800.0	5,538.2	5,750.9	5,232.7	34.8	49.2	26.82	-1,142.6	1,922.6	728.4	682.9	45.52	16.003		
5,900.0	5,637.6	5,876.5	5,346.6	35.0	50.1	26.18	-1,169.4	1,968.5	759.5	714.0	45.51	16.689		
6,000.0	5,737.3	6,004.5	5,464.8	35.2	51.0	25.57	-1,194.0	2,010.7	789.6	744.2	45.43	17.382		
6,100.0	5,837.2	6,134.7	5,587.3	35.3	51.7	24.98	-1,216.4	2,048.9	818.8	773.5	45.27	18.085		
6,162.8	5,900.0	6,217.7	5,666.4	35.4	52.2	137.33	-1,229.2	2,070.7	836.5	791.4	45.14	18.530		
6,200.0	5,937.2	6,267.5	5,714.1	35.4	52.4	137.04	-1,236.3	2,082.9	846.7	801.5	45.11	18.767		
6,300.0	6,037.2	6,403.5	5,845.7	35.5	53.0	136.38	-1,253.5	2,112.4	870.8	825.7	45.10	19.308		
6,400.0	6,137.2	6,542.6	5,981.8	35.5	53.5	135.86	-1,267.9	2,137.0	890.6	845.4	45.17	19.716		
6,500.0	6,237.2	6,684.2	6,121.7	35.6	53.9	135.48	-1,279.1	2,156.1	905.7	860.4	45.31	19.990		
6,600.0	6,337.2	6,827.7	6,264.4	35.7	54.2	135.23	-1,286.9	2,169.4	916.0	870.6	45.50	20.135		
6,700.0	6,437.2	6,972.5	6,408.9	35.8	54.3	135.10	-1,291.0	2,176.5	921.6	875.8	45.73	20.153		
6,800.0	6,537.2	7,100.8	6,537.2	35.9	54.4	135.07	-1,291.8	2,177.7	922.5	876.5	45.99	20.061		
6,900.0	6,637.2	7,200.8	6,637.2	35.9	54.5	135.07	-1,291.8	2,177.7	922.5	876.3	46.22	19.958		
7,000.0	6,737.2	7,300.8	6,737.2	36.0	54.5	135.07	-1,291.8	2,177.7	922.5	876.1	46.47	19.854		
7,100.0	6,837.2	7,400.8	6,837.2	36.1	54.6	135.07	-1,291.8	2,177.7	922.5	875.8	46.71	19.750		
7,200.0	6,937.2	7,500.8	6,937.2	36.2	54.6	135.07	-1,291.8	2,177.7	922.5	875.6	46.96	19.646		
7,300.0	7,037.2	7,600.8	7,037.2	36.3	54.7	135.07	-1,291.8	2,177.7	922.5	875.3	47.21	19.542		
7,400.0	7,137.2	7,700.8	7,137.2	36.4	54.8	135.07	-1,291.8	2,177.7	922.5	875.1	47.46	19.438		
7,500.0	7,237.2	7,800.8	7,237.2	36.5	54.8	135.07	-1,291.8	2,177.7	922.5	874.8	47.72	19.334		
7,600.0	7,337.2	7,900.8	7,337.2	36.6	54.9	135.07	-1,291.8	2,177.7	922.5	874.6	47.97	19.230		
7,700.0	7,437.2	8,000.8	7,437.2	36.6	54.9	135.07	-1,291.8	2,177.7	922.5	874.3	48.24	19.125		
7,742.8	7,480.0	8,043.6	7,480.0	36.7	55.0	135.07	-1,291.8	2,177.7	922.5	874.2	48.35	19.081		

Company:	BAYSWATER EXPLORATION & PRODUCTION	Local Co-ordinate Reference:	Well Casa Loma 18-25
Project:	SEC.26-T7N-R67W	TVD Reference:	WELL @ 4969.0ft (Original Well Elev)
Reference Site:	Casa Loma 8 Pad Sec.26-T7N-R67W	MD Reference:	WELL @ 4969.0ft (Original Well Elev)
Site Error:	0.0ft	North Reference:	True
Reference Well:	Casa Loma 18-25	Survey Calculation Method:	Minimum Curvature
Well Error:	0.0ft	Output errors are at	2.00 sigma
Reference Wellbore	Wellbore #1	Database:	Landmark
Reference Design:	Plan #1 (7-16-12)	Offset TVD Reference:	Offset Datum

Reference Depths are relative to WELL @ 4969.0ft (Original Well Elev) Coordinates are relative to: Casa Loma 18-25
Offset Depths are relative to Offset Datum
Central Meridian is -105.500000 °
Coordinate System is US State Plane 1983, Colorado Northern Zone
Grid Convergence at Surface is: 0.42°



Company:	BAYSWATER EXPLORATION & PRODUCTION	Local Co-ordinate Reference:	Well Casa Loma 18-25
Project:	SEC.26-T7N-R67W	TVD Reference:	WELL @ 4969.0ft (Original Well Elev)
Reference Site:	Casa Loma 8 Pad Sec.26-T7N-R67W	MD Reference:	WELL @ 4969.0ft (Original Well Elev)
Site Error:	0.0ft	North Reference:	True
Reference Well:	Casa Loma 18-25	Survey Calculation Method:	Minimum Curvature
Well Error:	0.0ft	Output errors are at	2.00 sigma
Reference Wellbore	Wellbore #1	Database:	Landmark
Reference Design:	Plan #1 (7-16-12)	Offset TVD Reference:	Offset Datum

Reference Depths are relative to WELL @ 4969.0ft (Original Well Elev) Coordinates are relative to: Casa Loma 18-25
 Offset Depths are relative to Offset Datum Coordinate System is US State Plane 1983, Colorado Northern Zone
 Central Meridian is -105.500000 ° Grid Convergence at Surface is: 0.42°

