

GREAT WESTERN OIL & GAS COMPANY

ADDENDUM TO LEGAL PLAT FOR

TAOKA KF #1-13D, #1-14D, #1-15D, #1-16D,
#1-20D, #1-21D, #1-22D, #1-23D, #1-36D,
#1-37D, #1-38D, #1-39D & #1-40D

SECTION 1, T1N, R65W, 6th. P.M.

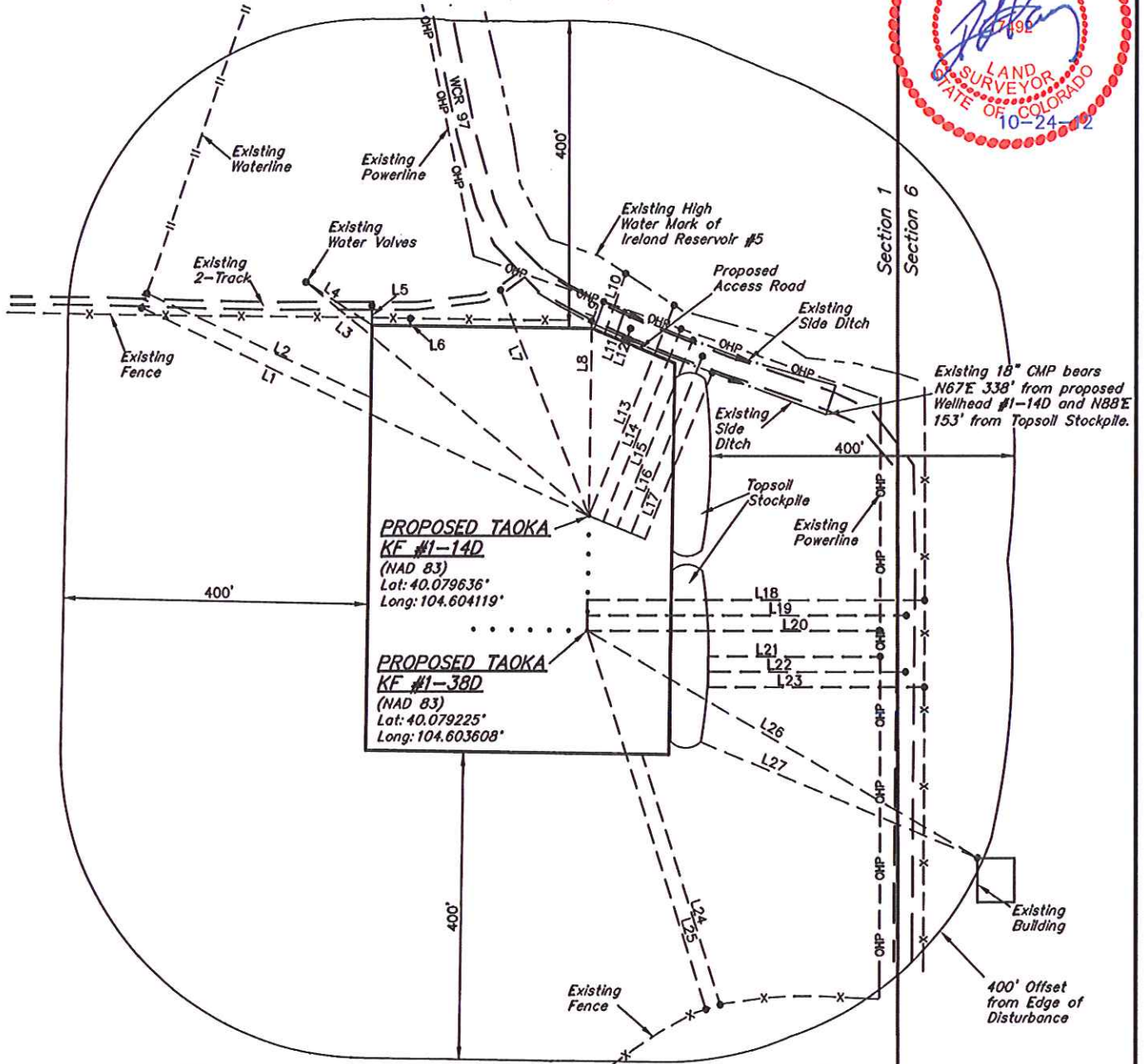
NE 1/4 SE 1/4

SCALE: 1" = 200'

DATE: 10-17-12

DRAWN BY: H.K.W.

REV: 10-24-12



LINE TABLE			LINE TABLE			LINE TABLE			LINE TABLE		
LINE	DIRECTION	LENGTH	LINE	DIRECTION	LENGTH	LINE	DIRECTION	LENGTH	LINE	DIRECTION	LENGTH
L1	N65°W	650'	L8	N01°E	255'	L15	N22°E	264'	L22	EAST	259'
L2	N65°W	325'	L9	N19°E	37'	L16	N22°E	250'	L23	EAST	285'
L3	N51°W	482'	L10	N19°E	83'	L17	N22°E	235'	L24	S18°E	341'
L4	N57°W	103'	L11	N19°E	36'	L18	EAST	445'	L25	S18°E	519'
L5	NORTH	26'	L12	N19°E	19'	L19	EAST	420'	L26	S60°E	594'
L6	NORTH	8'	L13	N22°E	297'	L20	EAST	386'	L27	S67°E	395'
L7	N22°W	317'	L14	N22°E	272'	L21	EAST	226'			

UINTAH ENGINEERING & LAND SURVEYING

85 So. 200 East * Vernal, Utah 84078 * (435) 789-1017