

Company				EnCANA OIL & GAS (USA) INC.			
Well				MCU 22-13B			
Field				MAMM CREEK			
County				GARFIELD			
State				COLORADO			
Location:				API # : 05-045-21269			
Permanent Datum				GROUND LEVEL			
Log Measured From				K.B.			
Drilling Measured From				K.B. OR 22FT AGL			
SEC 22 TWP 7S RGE 93W				Elevation			
SHL: 1950' FSL & 730' FWL				GR/JB			
BHL: 1950' FSL & 730' FWL				3.750"			
ONE							
10370 FT							
7149 FT							
7149 FT							
3900 FT							
8.75"							
WATER							
8.3# GAL							
N/A							
SEE LOG							
18:00							
21:30							
14098							
GRAND JUNCTION							
R. HALL							
V. KOCHETOV							
Borehole Record				Tubing Record			
Run Number				Bit			
From				To			
Size				Weight			
From				To			
Size				Weight			
From				To			
Wgt/Ft				Top			
Bottom							
4.5"				11.6#			
SURFACE				10370 FT			

<<< Fold Here >>>


All interpretations of log data are opinions based on inferences from electrical or other measurements. We do not guarantee the accuracy or correctness of any interpretation or recommendation and shall not be liable or responsible for any loss, costs, damages, or expenses incurred or sustained by anyone resulting from any interpretation made by any of our employees or agents. These interpretations are also subject to our general terms and conditions set out in our current Price Sheet.

Remarks: Rig:NABORS M15 Prints: 2 Service Order #190735

LOG CORRELATED TO WEATHERFORD BOND LOG DATED 10-SEPT-2012

YOUR CREW OF T. HONE, P. BATES, D. GONZALEZ THANKS YOU

BHT		EQUIPMENT DATA			
Bit Size		Run No.	Tool Type	Tool No.	Other
Surface Pressure					
Shut In					



Weatherford®

MAIN PASS

Database File: 190735.db

Dataset Pathname: pass7

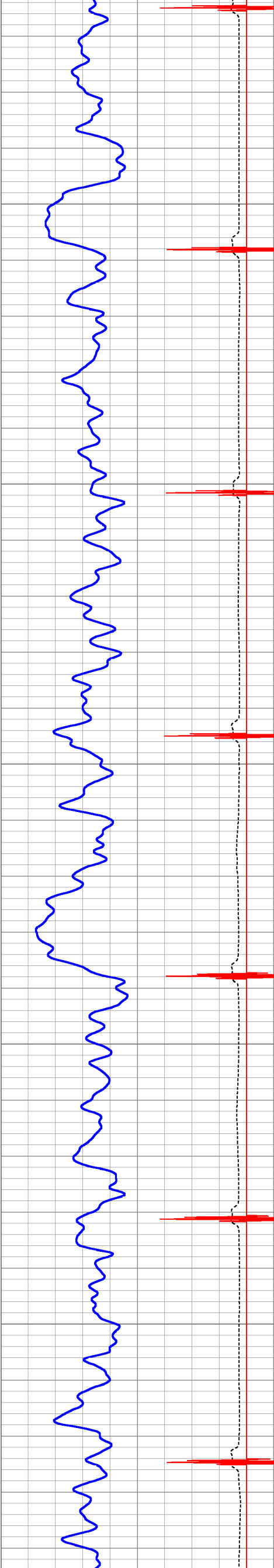
Presentation Format: 3x5cbl

Dataset Creation: Thu Sep 13 21:37:58 2012 by Log Weatherford Casedho

Charted by: Depth in Feet scaled 1:240

500	TT (usec)	300	LTEN	0	Amplified Amplitude (mV)	50	200	VDL	1200
9	Collars	-1	(lb)	0	Amplitude (mV)	100			
0	Gamma Ray	150	5000	0					





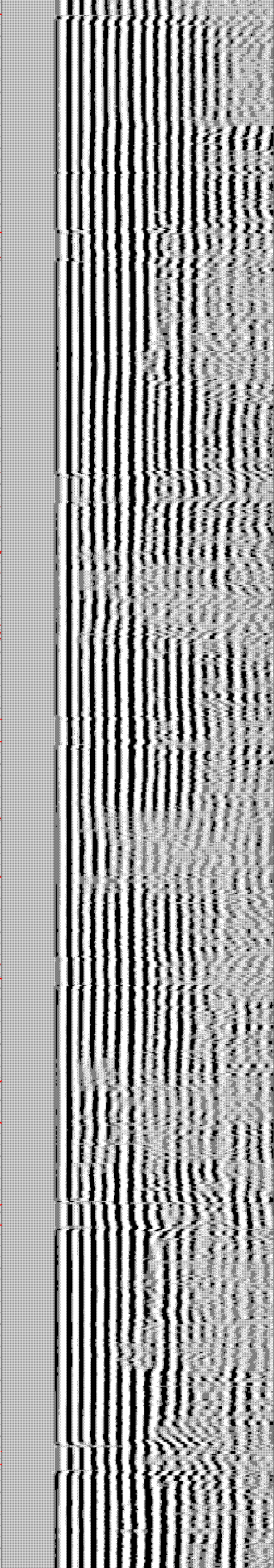
3950

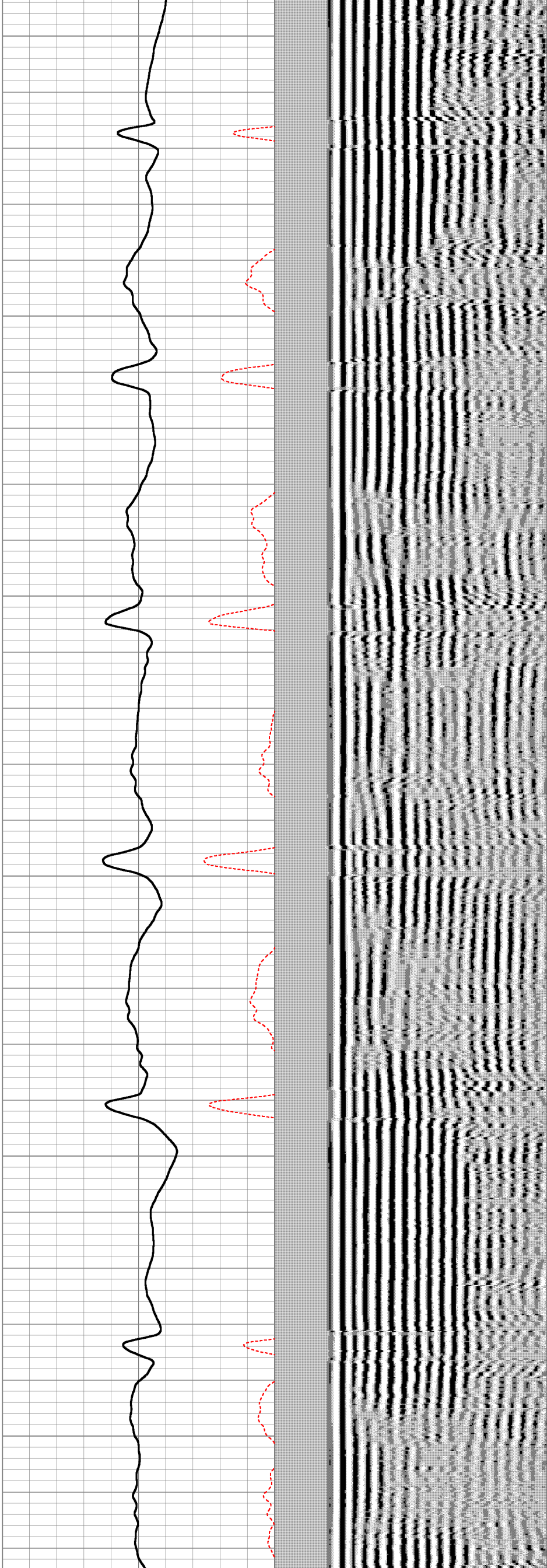
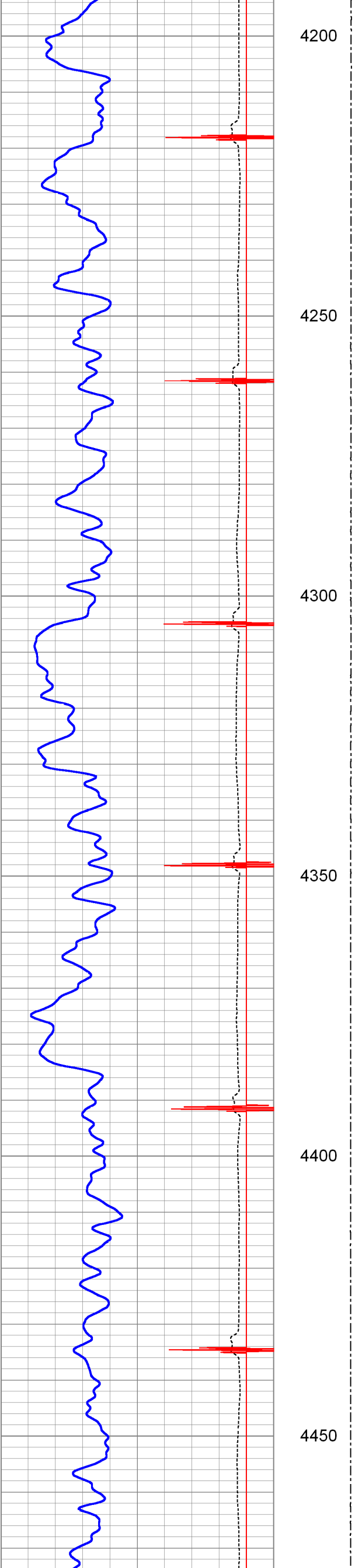
4000

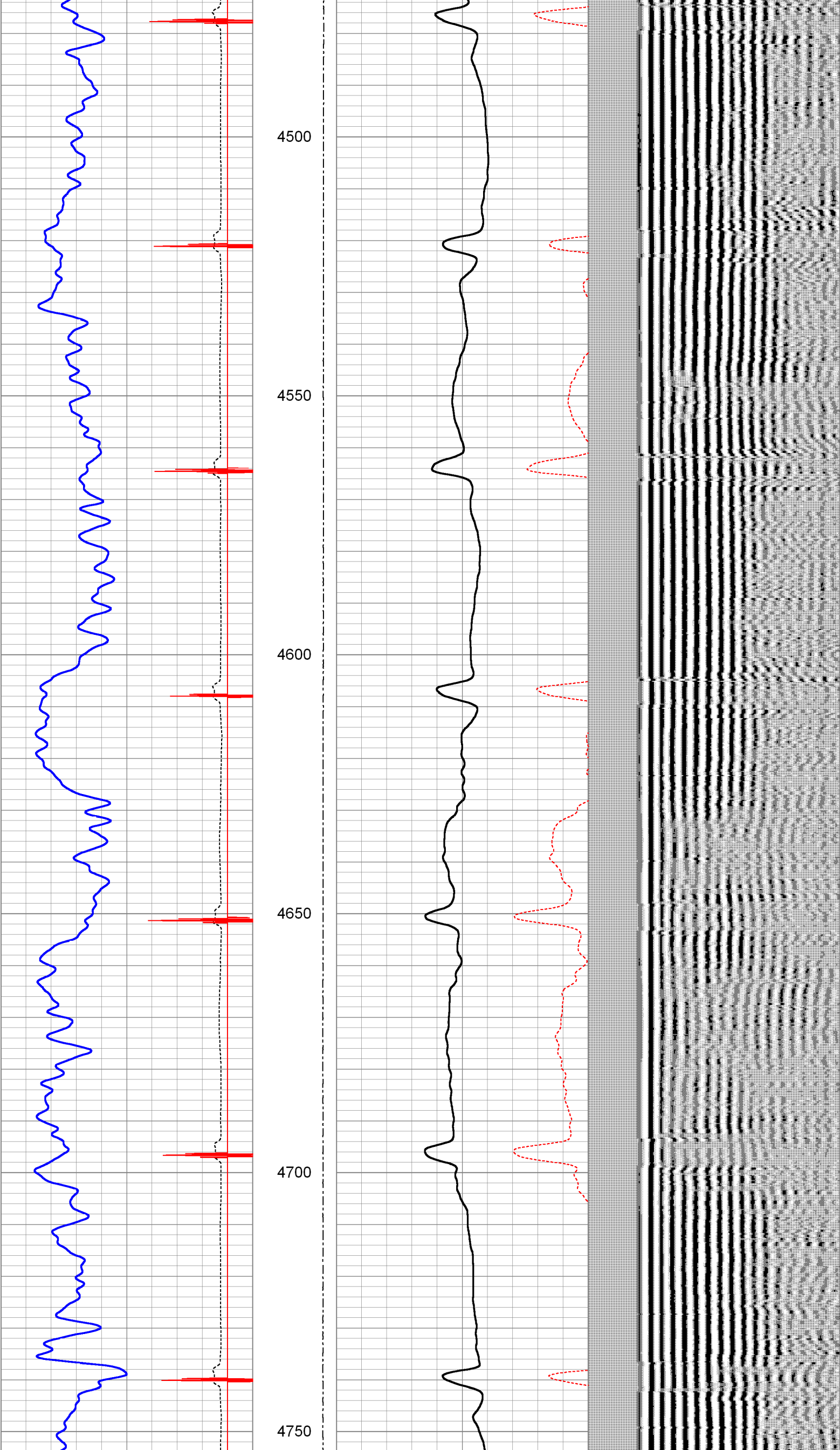
4050

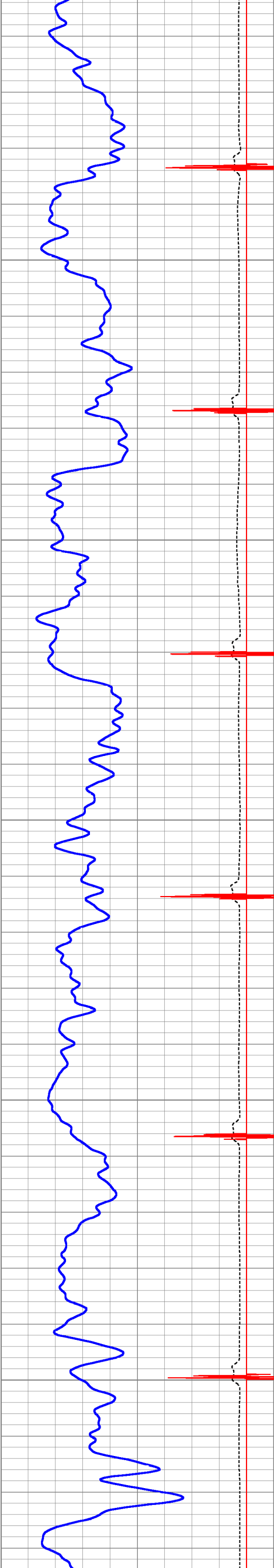
4100

4150









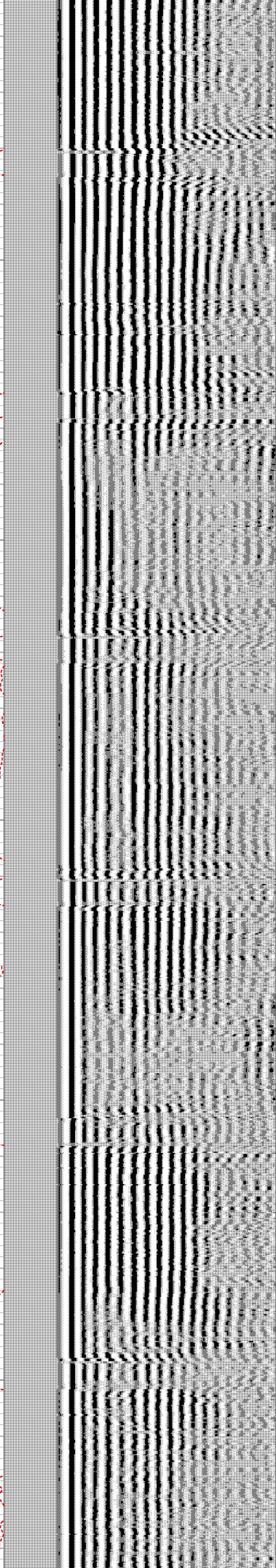
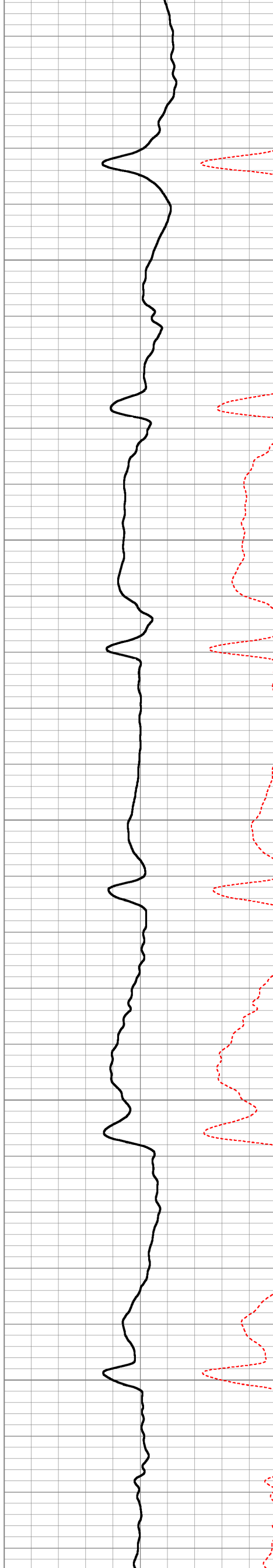
4800

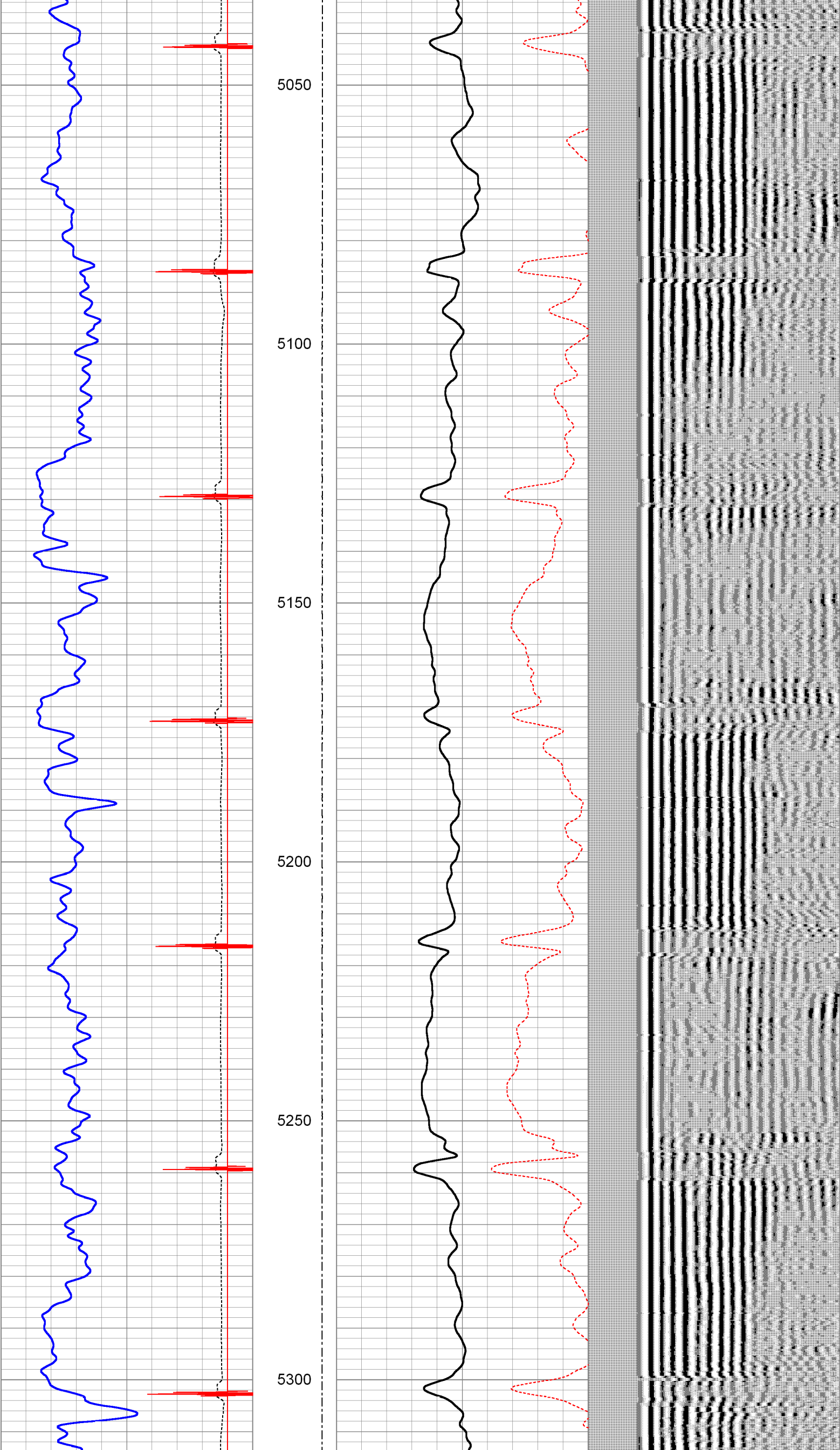
4850

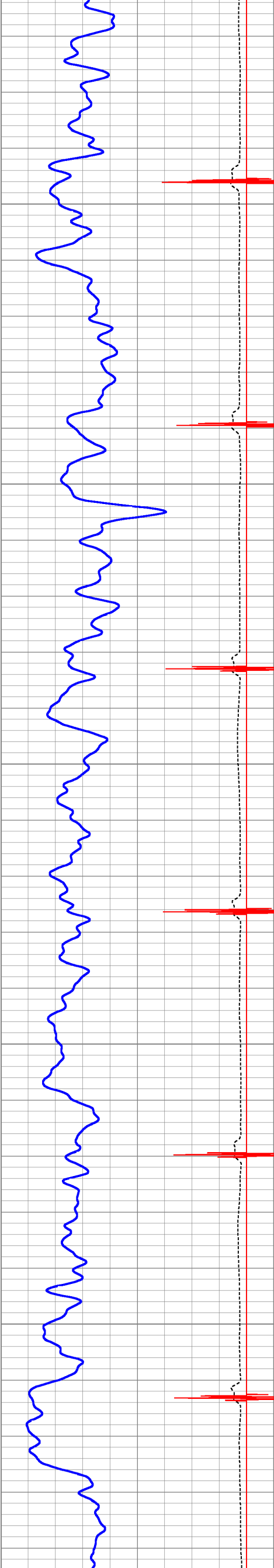
4900

4950

5000







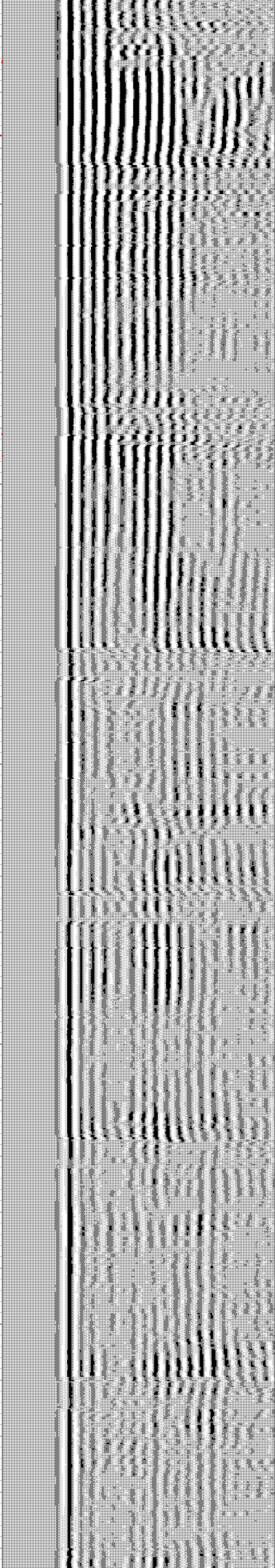
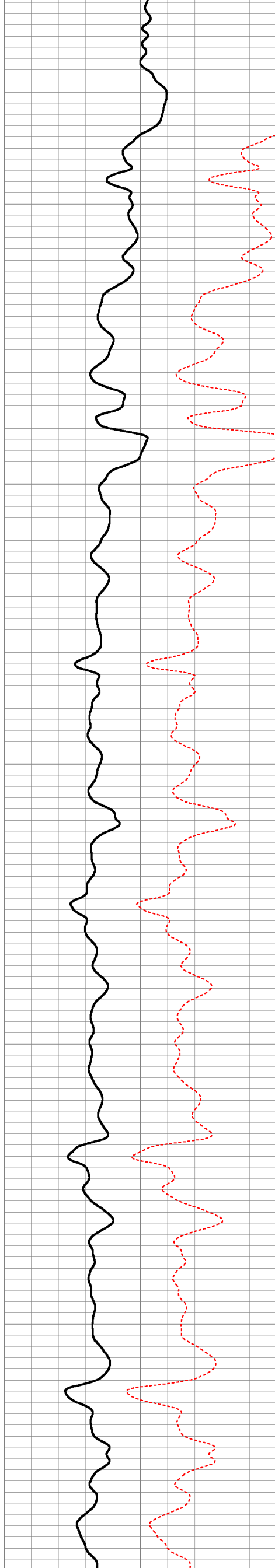
5350

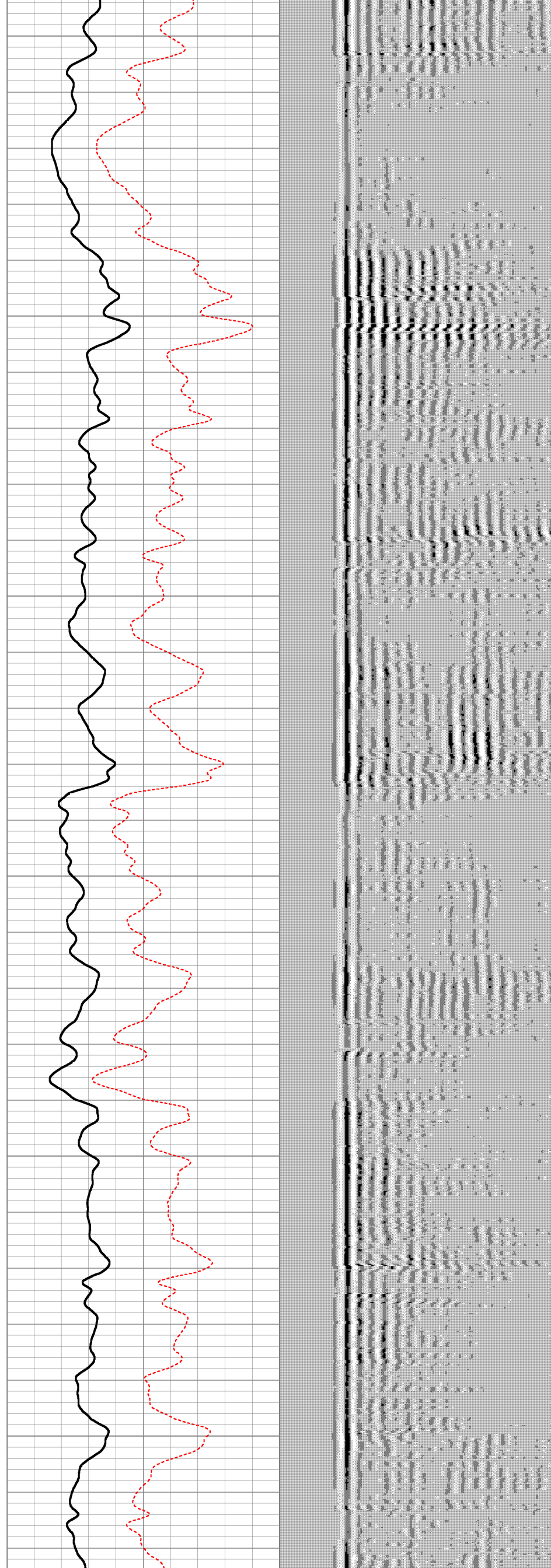
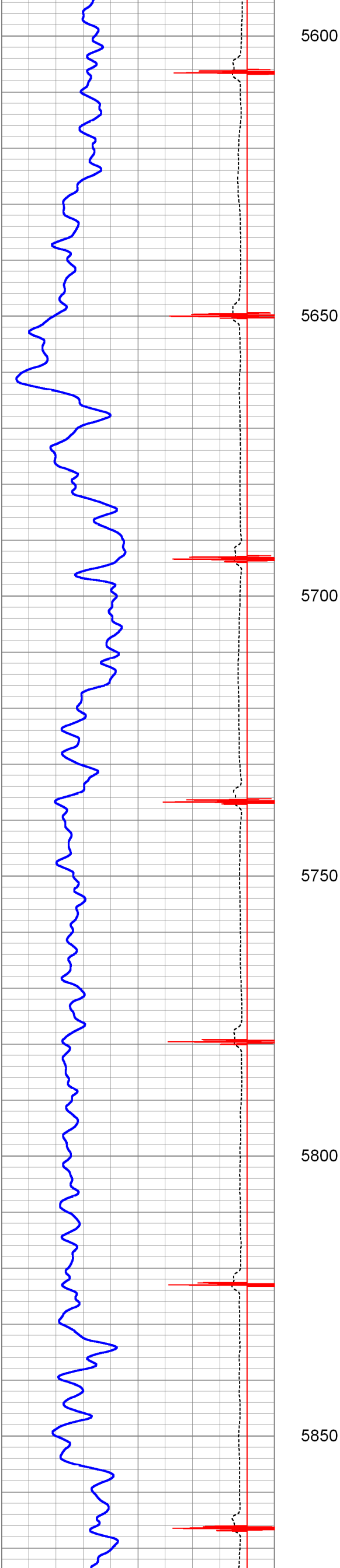
5400

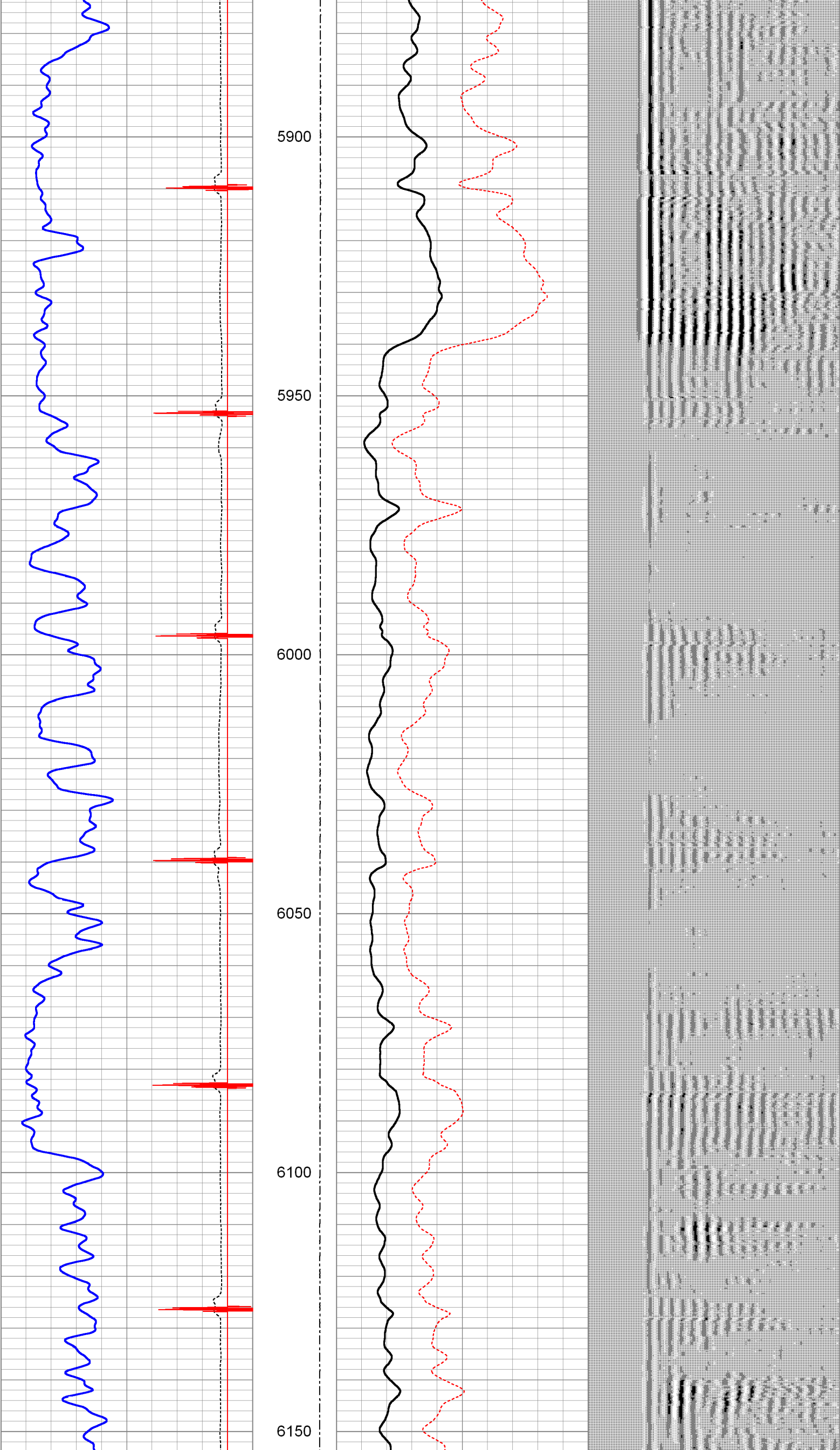
5450

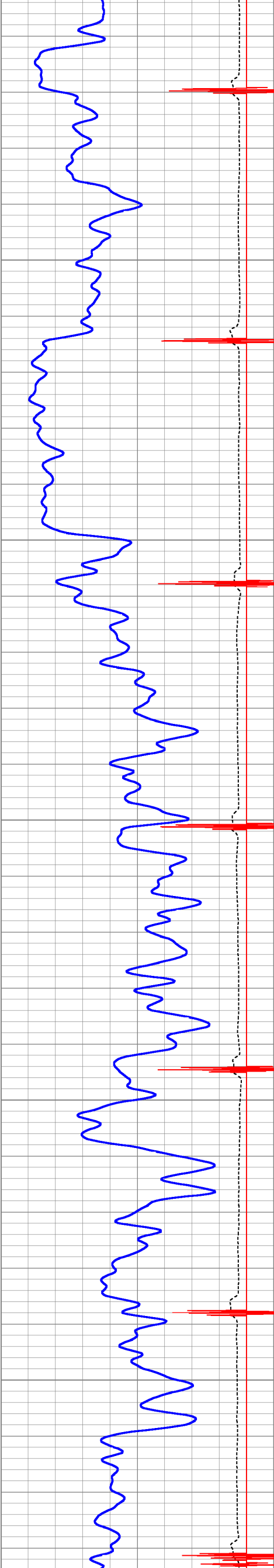
5500

5550









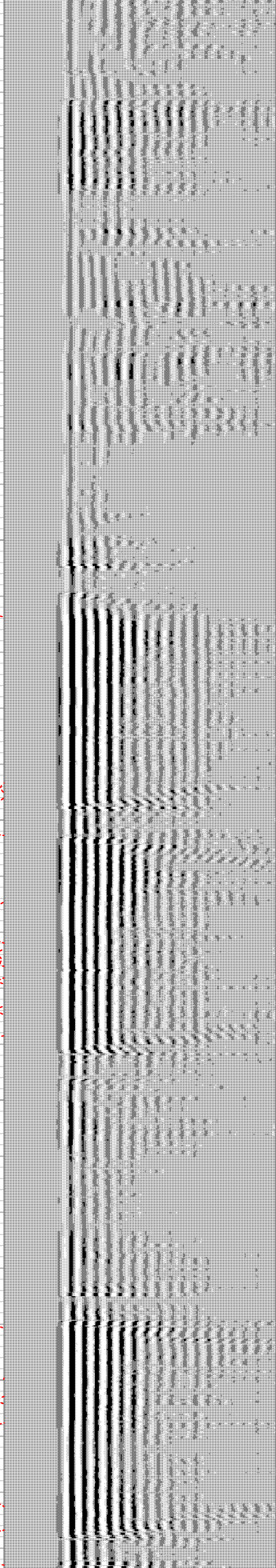
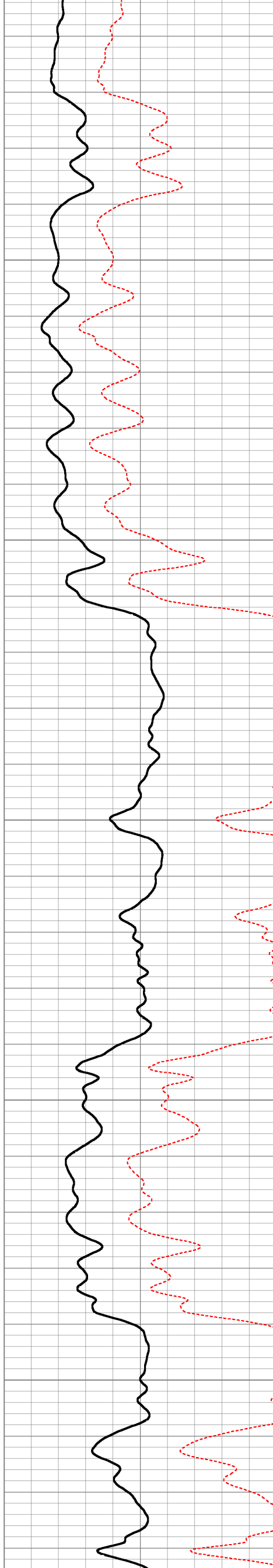
6200

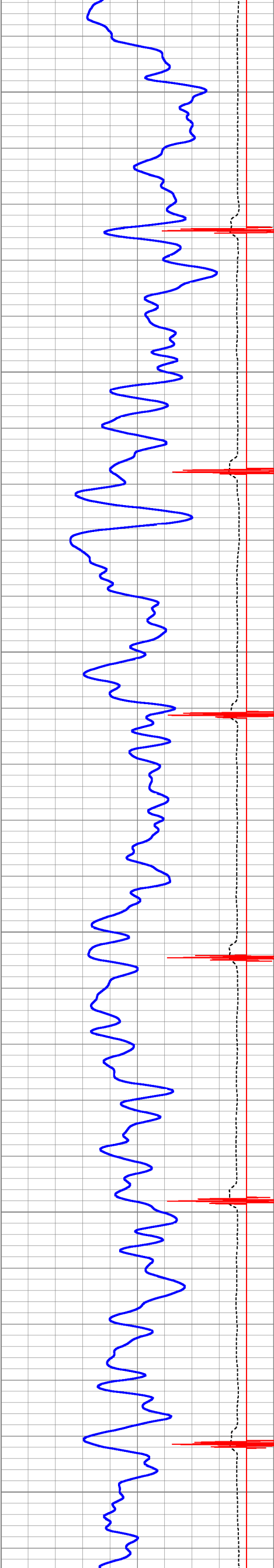
6250

6300

6350

6400





6450

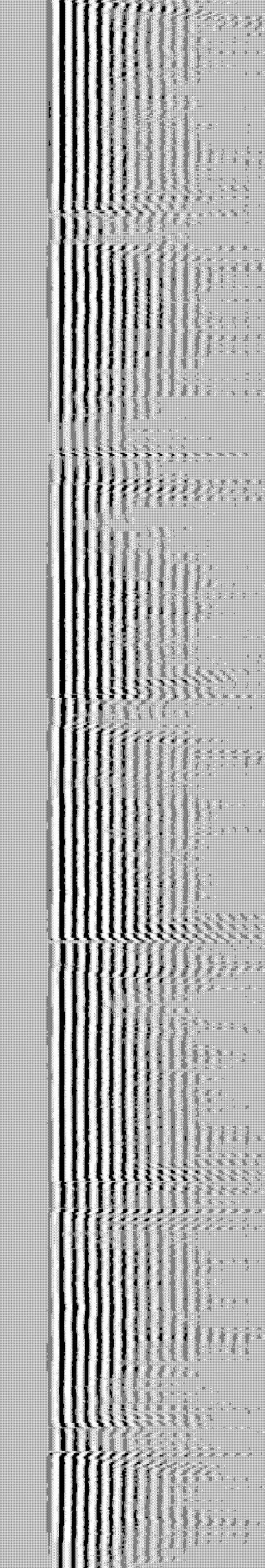
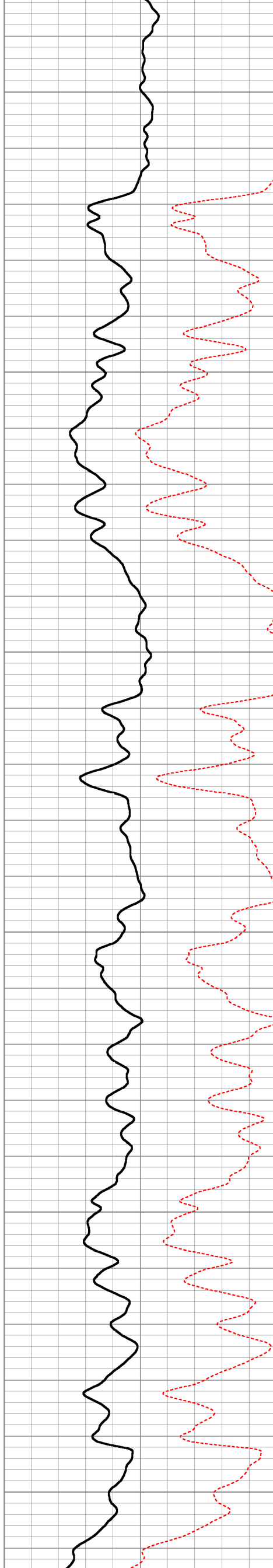
6500

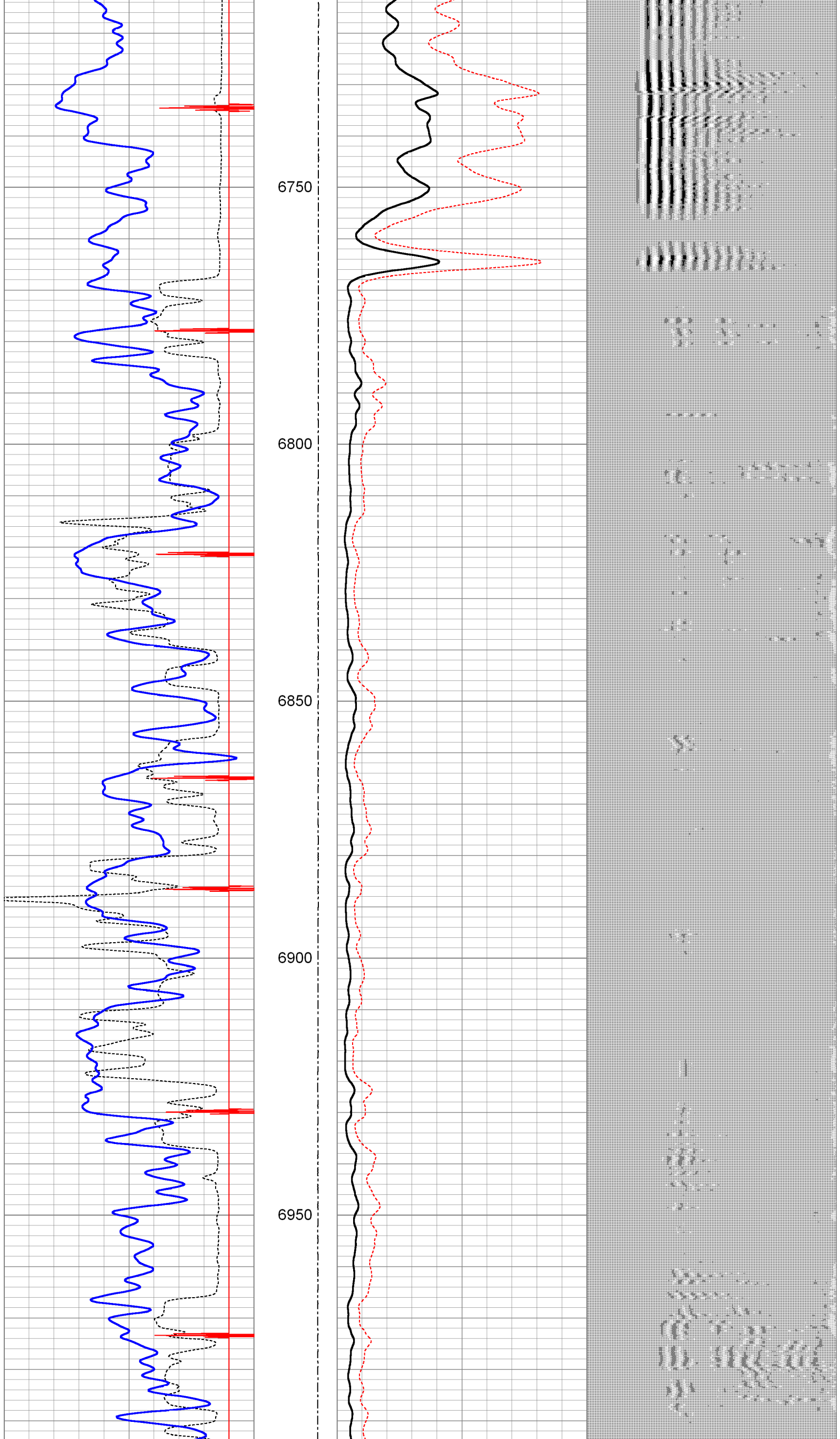
6550

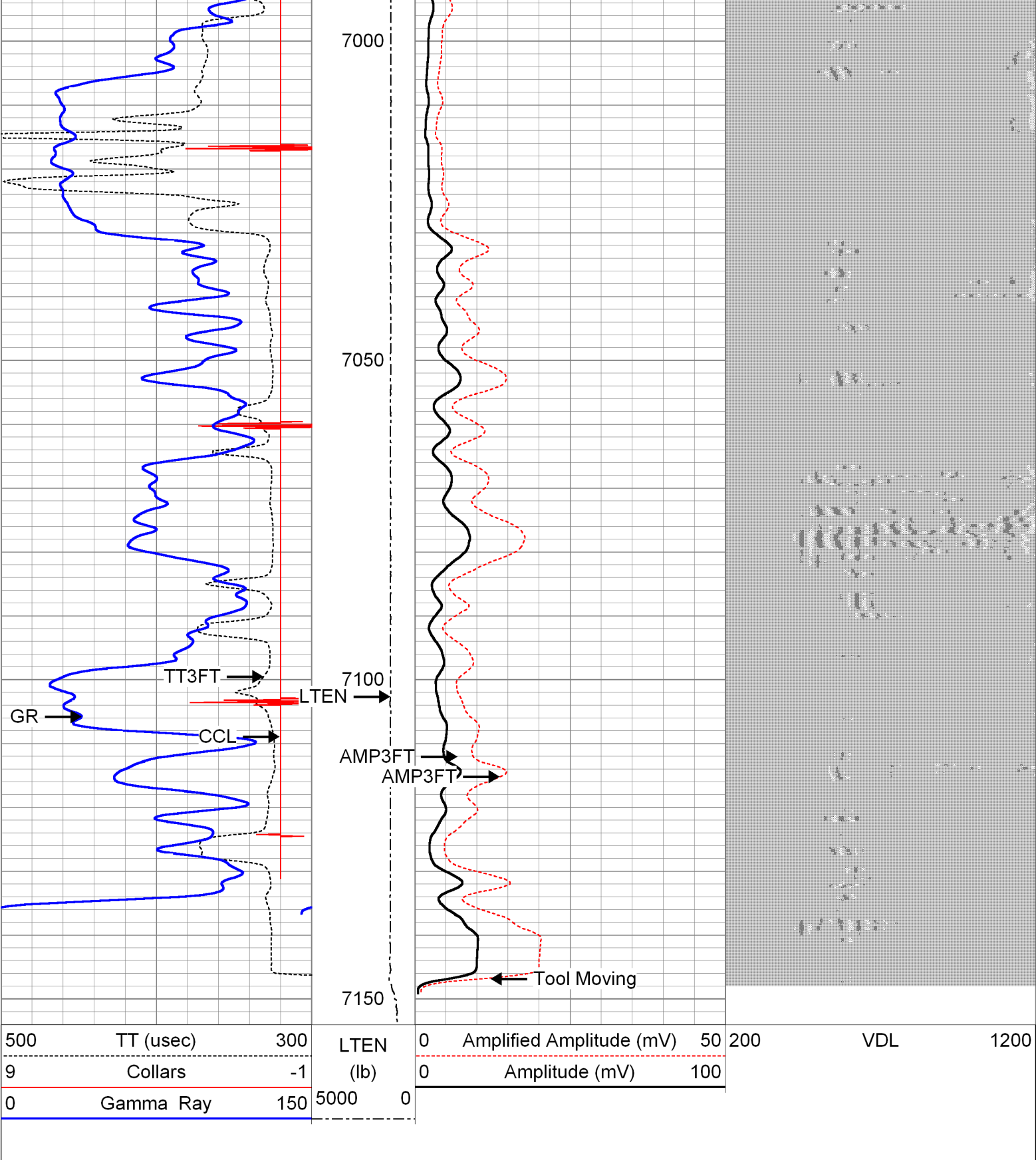
6600

6650

6700



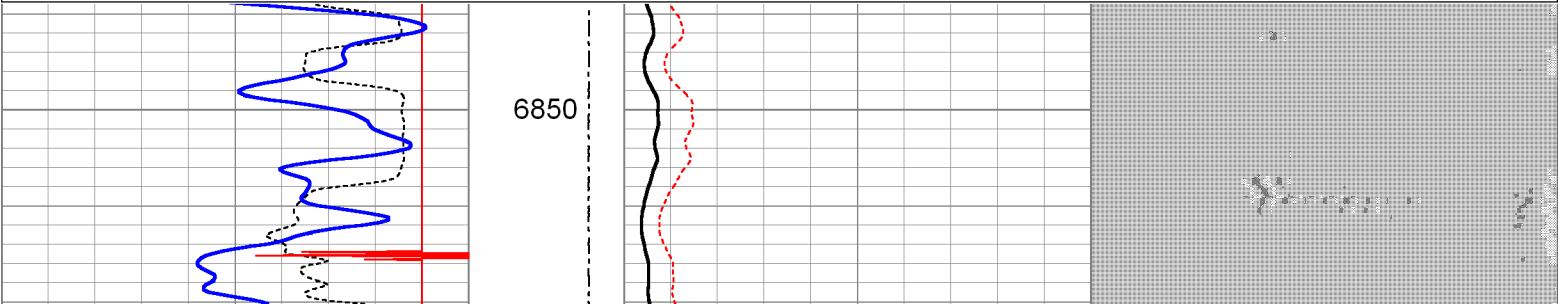
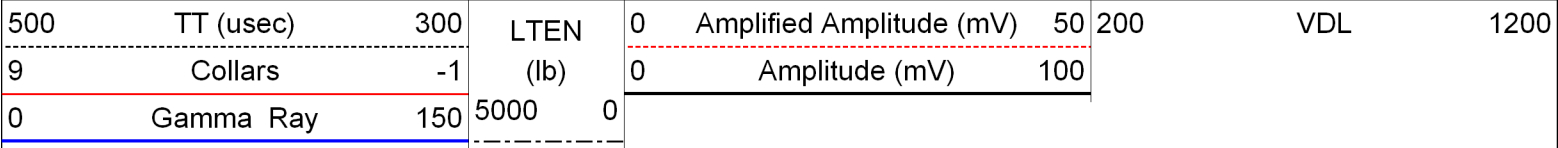


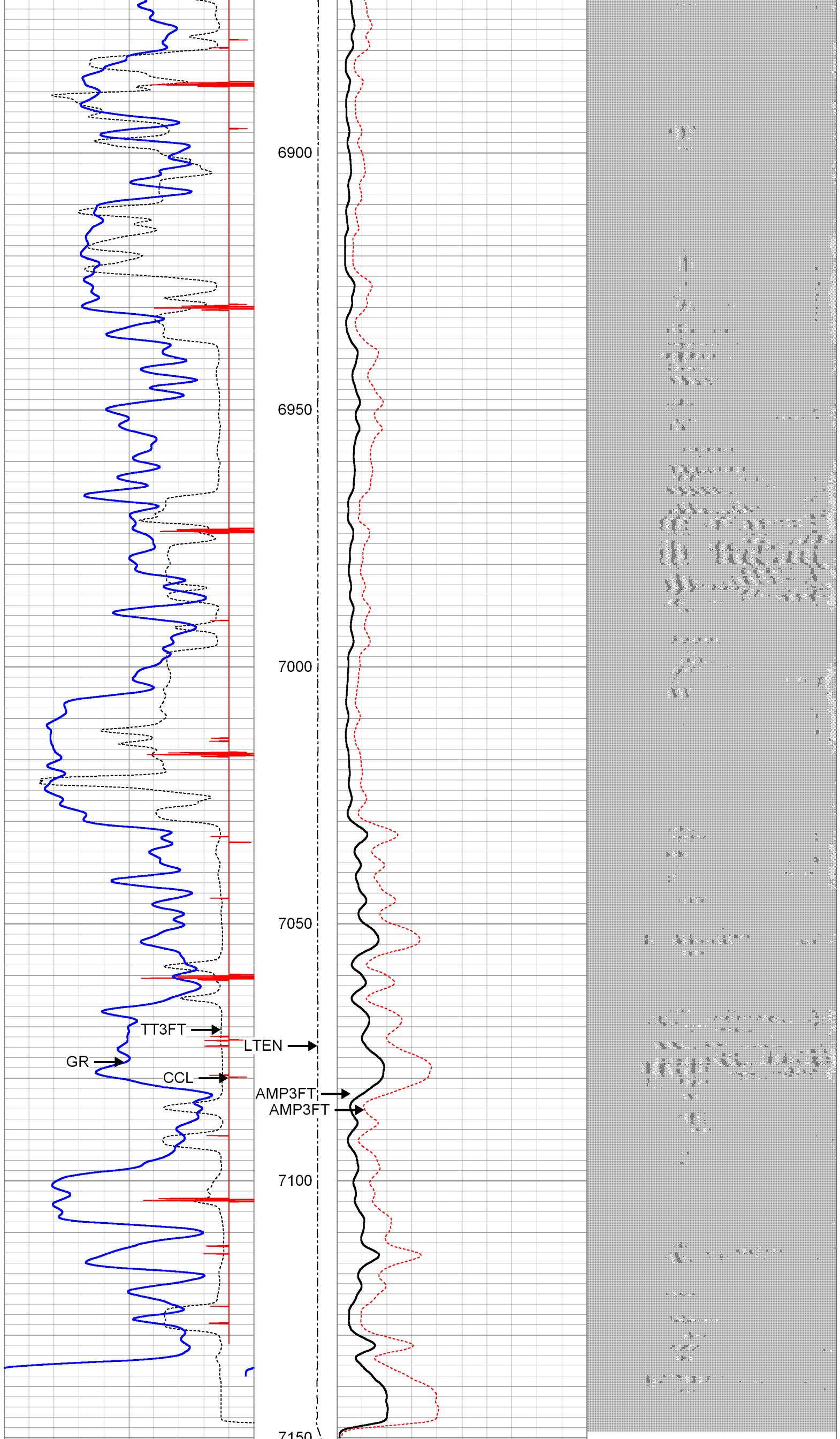


REPEAT PASS

Weatherford®



Database File: 190735.db
Dataset Pathname: pass6
Presentation Format: 3x5cbl
Dataset Creation: Thu Sep 13 21:30:10 2012 by Log Weatherford Casedho
Charted by: Depth in Feet scaled 1:240





500	TT (usec)	300	LTEN	0	Amplified Amplitude (mV)	50	200	VDL	1200
9	Collars	-1	(lb)	0	Amplitude (mV)	100			
0	Gamma Ray	150	5000	0					

Calibration Report						
Database File:		190735.db				
Dataset Pathname:		pass7				
Dataset Creation:		Thu Sep 13 21:37:58 2012 by Log Weatherford Casedho				
Segmented Cement Bond Log Calibration Report						
Serial Number:		scbt400				
Tool Model:		SCBT2.7H				
Performed:		Thu Sep 13 21:00:16 2012				
Depth:		405.038		ft		
Casing Diameter:		4.500		in		
	References (mv)		Readings (v)		Results	
	Zero	Reference	Zero	Reference	m	b
3'	1.000	81.196	0.000	0.982	81.694	1.000
5'	1.000	81.196	0.000	2.276	35.234	1.000
S1	0.000	100.000	0.000	1.768	56.574	0.000
S2	0.000	100.000	0.000	1.591	62.855	0.000
S3	0.000	100.000	0.000	1.620	61.743	0.000
S4	0.000	100.000	0.000	1.650	60.603	0.000
S5	0.000	100.000	0.000	1.681	59.501	0.000
S6	0.000	100.000	0.000	1.846	54.176	0.000
S7	0.000	100.000	0.000	1.810	55.253	0.000
S8	0.000	100.000	0.000	1.623	61.621	0.000
Gamma Ray Calibration Report						
Type / Serial:		GRBA2.7H / grba382				
SHOP CALIBRATION						
		Mon Aug 06 07:48:11 2012				
		Counts/Sec.	Gain	Offset	Jig	Units
Background		266.0				cps
Calibrator		761.2				cps
			0.3500			/cps
PRIMARY VERIFICATION						
		Tue Jul 24 10:05:09 2012				
Background		49.5				cps
Calibrator		147.7				cps
Difference					98.2	
BEFORE SURVEY VERIFICATION						
Background		0.0				cps
Calibrator		0.0				cps
Difference					0.0	
AFTER SURVEY VERIFICATION						
Background		0.0				cps
Calibrator		0.0				cps
Difference					0.0	

Sensor	Offset (ft)	Schematic	Description	Len (ft)	OD (in)	Wt (lb)
			Weatherford	1.03	1.44	
			2.75C Cent 2 3/4" computalog cent	2.49	2.75	11.90

[illegible]