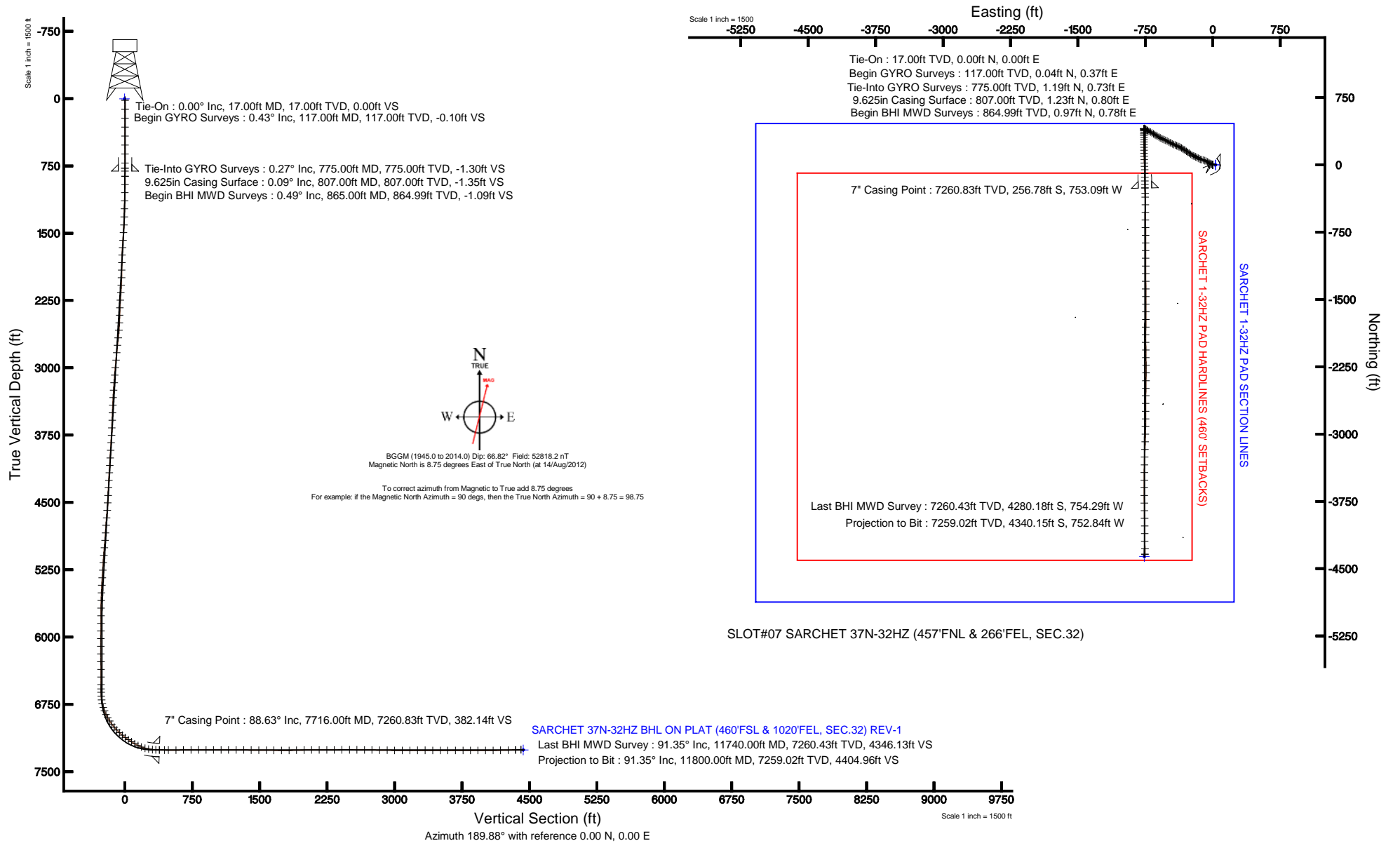


KERR-MCGEE OIL & GAS ONSHORE LP

Location: COLORADO Slot: SLOT#07 SARCHET 37N-32HZ (457'FNL & 266'FEL, SEC.32)
 Field: WELD COUNTY (KERR MCGEE) Well: SARCHET 37N-32HZ
 Facility: SEC.32-T3N-R66W Wellbore: SARCHET 37N-32HZ PWB

Plot reference wellpath is SARCHET 37N-32HZ (REV-A.0) PWP

True vertical depths are referenced to XTREME 8 (RKB)	Grid System: NAD83 / Lambert Colorado SP, Northern Zone (501), US feet
Measured depths are referenced to XTREME 8 (RKB)	North Reference: True north
XTREME 8 (RKB) to Mean Sea Level: 4941 feet	Scale: True distance
Mean Sea Level to Mud line (At Slot: SLOT#07 SARCHET 37N-32HZ (457'FNL & 266'FEL, SEC.32)): 0 feet	Depths are in feet
Coordinates are in feet referenced to Slot	Created by: augunora on 14/Sep/2012





Actual Wellpath Report

SARCHET 37N-32HZ AWP

Page 1 of 7



REFERENCE WELLPATH IDENTIFICATION

Operator	KERR-MCGEE OIL & GAS ONSHORE LP	Slot	SLOT#07 SARCHET 37N-32HZ (457'FNL & 266'FEL, SEC.32)
Area	COLORADO	Well	SARCHET 37N-32HZ
Field	WELD COUNTY (KERR MCGEE)	Wellbore	SARCHET 37N-32HZ AWB
Facility	SEC.32-T3N-R66W		

REPORT SETUP INFORMATION

Projection System	NAD83 / Lambert Colorado SP, Northern Zone (501), US feet	Software System	WellArchitect@ 3.0.0
North Reference	True	User	Augunora
Scale	0.999957	Report Generated	14/Sep/2012 at 09:10
Convergence at slot	0.46° East	Database/Source file	WA_ANADARKO/SARCHET_37N-32HZ_AWB.xml

WELLPATH LOCATION

	Local coordinates		Grid coordinates		Geographic coordinates	
	North[ft]	East[ft]	Easting[US ft]	Northing[US ft]	Latitude	Longitude
Slot Location	4636.93	1120.22	3197645.13	1311902.32	40°11'14.654"N	104°47'33.216"W
Facility Reference Pt			3196561.77	1307256.85	40°10'28.832"N	104°47'47.650"W
Field Reference Pt			3197771.84	1268891.29	40°04'09.600"N	104°47'36.000"W

WELLPATH DATUM

Calculation method	Minimum curvature	XTREME 8 (RKB) to Facility Vertical Datum	4941.00ft
Horizontal Reference Pt	Slot	XTREME 8 (RKB) to Mean Sea Level	4941.00ft
Vertical Reference Pt	XTREME 8 (RKB)	XTREME 8 (RKB) to Mud Line at Slot (SLOT#07 SARCHET 37N-32HZ (457'FNL & 266'FEL, SEC.32))	4941.00ft
MD Reference Pt	XTREME 8 (RKB)	Section Origin	N 0.00, E 0.00 ft
Field Vertical Reference	Mean Sea Level	Section Azimuth	189.84°



Actual Wellpath Report

SARCHET 37N-32HZ AWP

Page 2 of 7



REFERENCE WELLPATH IDENTIFICATION

Operator	KERR-MCGEE OIL & GAS ONSHORE LP	Slot	SLOT#07 SARCHET 37N-32HZ (457'FNL & 266'FEL, SEC.32)
Area	COLORADO	Well	SARCHET 37N-32HZ
Field	WELD COUNTY (KERR MCGEE)	Wellbore	SARCHET 37N-32HZ AWB
Facility	SEC.32-T3N-R66W		

WELLPATH DATA (153 stations) † = interpolated/extrapolated station

MD [ft]	Inclination [°]	Azimuth [°]	TVD [ft]	Vert Sect [ft]	North [ft]	East [ft]	Latitude	Longitude	DLS [°/100ft]	Comments
0.00†	0.000	84.190	0.00	0.00	0.00	0.00	40°11'14.654"N	104°47'33.216"W	0.00	
17.00	0.000	84.190	17.00	0.00	0.00	0.00	40°11'14.654"N	104°47'33.216"W	0.00	Tie-On
117.00	0.430	84.190	117.00	-0.10	0.04	0.37	40°11'14.654"N	104°47'33.211"W	0.43	Begin GYRO Surveys
217.00	0.300	338.950	217.00	-0.43	0.32	0.65	40°11'14.657"N	104°47'33.208"W	0.59	
317.00	0.250	76.530	317.00	-0.74	0.62	0.77	40°11'14.660"N	104°47'33.206"W	0.42	
417.00	0.180	346.650	417.00	-0.97	0.82	0.95	40°11'14.662"N	104°47'33.204"W	0.31	
517.00	0.130	194.490	517.00	-1.00	0.86	0.88	40°11'14.663"N	104°47'33.205"W	0.30	
617.00	0.160	41.840	617.00	-1.01	0.86	0.95	40°11'14.662"N	104°47'33.204"W	0.28	
717.00	0.310	287.830	717.00	-1.16	1.04	0.78	40°11'14.664"N	104°47'33.206"W	0.40	
775.00	0.270	42.910	775.00	-1.30	1.19	0.73	40°11'14.666"N	104°47'33.207"W	0.84	Tie-Into GYRO Surveys
865.00	0.490	193.350	864.99	-1.09	0.97	0.78	40°11'14.664"N	104°47'33.206"W	0.82	Begin BHI MWD Surveys
956.00	0.770	321.840	955.99	-1.11	1.07	0.31	40°11'14.665"N	104°47'33.212"W	1.25	
1047.00	2.640	309.010	1046.95	-2.54	2.87	-1.69	40°11'14.682"N	104°47'33.238"W	2.08	
1138.00	4.370	301.000	1137.77	-4.82	5.98	-6.29	40°11'14.713"N	104°47'33.297"W	1.97	
1229.00	5.840	291.370	1228.41	-6.99	9.45	-13.58	40°11'14.747"N	104°47'33.391"W	1.86	
1319.00	6.520	296.760	1317.89	-9.40	13.42	-22.40	40°11'14.787"N	104°47'33.505"W	0.99	
1410.00	8.080	301.400	1408.15	-13.25	19.08	-32.48	40°11'14.843"N	104°47'33.634"W	1.83	
1495.00	9.890	298.980	1492.10	-17.84	25.73	-43.96	40°11'14.908"N	104°47'33.782"W	2.17	
1581.00	11.370	300.300	1576.63	-23.22	33.59	-57.74	40°11'14.986"N	104°47'33.940"W	1.74	
1666.00	11.540	296.800	1659.93	-28.63	41.65	-72.57	40°11'15.066"N	104°47'34.151"W	0.84	
1751.00	10.950	292.880	1743.30	-32.93	48.62	-87.59	40°11'15.134"N	104°47'34.345"W	1.14	
1837.00	10.850	287.700	1827.75	-35.88	54.26	-102.83	40°11'15.190"N	104°47'34.541"W	1.14	
1922.00	11.010	284.600	1911.21	-37.65	58.73	-118.31	40°11'15.234"N	104°47'34.740"W	0.72	
2007.00	10.710	285.420	1994.69	-39.09	62.88	-133.77	40°11'15.275"N	104°47'34.940"W	0.40	
2093.00	10.330	297.250	2079.25	-42.18	68.54	-148.33	40°11'15.331"N	104°47'35.127"W	2.55	
2178.00	11.470	300.790	2162.72	-47.48	76.35	-162.37	40°11'15.409"N	104°47'35.308"W	1.55	
2263.00	10.950	299.570	2246.10	-53.23	84.66	-176.65	40°11'15.491"N	104°47'35.492"W	0.67	
2348.00	9.550	291.070	2329.74	-57.32	91.18	-190.25	40°11'15.555"N	104°47'35.667"W	2.42	
2434.00	10.110	292.210	2414.48	-60.33	96.60	-203.90	40°11'15.609"N	104°47'35.843"W	0.69	
2519.00	10.240	295.750	2498.15	-64.00	102.70	-217.61	40°11'15.669"N	104°47'36.020"W	0.75	
2604.00	11.490	300.840	2581.62	-69.10	110.32	-231.69	40°11'15.744"N	104°47'36.201"W	1.85	
2690.00	12.800	306.960	2665.70	-76.52	120.44	-246.65	40°11'15.844"N	104°47'36.394"W	2.13	
2775.00	12.570	305.420	2748.62	-84.80	131.47	-261.72	40°11'15.953"N	104°47'36.588"W	0.48	
2860.00	12.610	306.170	2831.58	-92.91	142.30	-276.74	40°11'16.060"N	104°47'36.782"W	0.20	
2945.00	11.970	307.150	2914.63	-101.07	153.10	-291.26	40°11'16.167"N	104°47'36.969"W	0.79	
3031.00	11.430	306.060	2998.85	-108.93	163.50	-305.26	40°11'16.270"N	104°47'37.149"W	0.68	
3116.00	11.460	303.540	3082.16	-116.04	173.13	-319.10	40°11'16.365"N	104°47'37.328"W	0.59	
3201.00	10.220	297.610	3165.64	-121.74	181.29	-332.82	40°11'16.445"N	104°47'37.504"W	1.96	
3286.00	10.670	302.660	3249.23	-127.09	189.03	-346.13	40°11'16.522"N	104°47'37.676"W	1.20	
3371.00	10.710	297.130	3332.76	-132.49	196.88	-359.79	40°11'16.600"N	104°47'37.852"W	1.21	
3457.00	10.210	292.130	3417.33	-136.49	203.39	-373.96	40°11'16.664"N	104°47'38.034"W	1.20	
3542.00	10.110	292.020	3501.00	-139.67	209.03	-387.85	40°11'16.720"N	104°47'38.213"W	0.12	
3628.00	10.620	294.540	3585.60	-143.27	215.15	-402.06	40°11'16.780"N	104°47'38.397"W	0.79	
3713.00	10.590	294.170	3669.14	-147.19	221.60	-416.31	40°11'16.844"N	104°47'38.580"W	0.09	
3798.00	11.120	294.260	3752.62	-151.16	228.17	-430.91	40°11'16.909"N	104°47'38.768"W	0.62	



Actual Wellpath Report

SARCHET 37N-32HZ AWP

Page 3 of 7



REFERENCE WELLPATH IDENTIFICATION

Operator	KERR-MCGEE OIL & GAS ONSHORE LP	Slot	SLOT#07 SARCHET 37N-32HZ (457'FNL & 266'FEL, SEC.32)
Area	COLORADO	Well	SARCHET 37N-32HZ
Field	WELD COUNTY (KERR MCGEE)	Wellbore	SARCHET 37N-32HZ AWB
Facility	SEC.32-T3N-R66W		

WELLPATH DATA (153 stations)

MD [ft]	Inclination [°]	Azimuth [°]	TVD [ft]	Vert Sect [ft]	North [ft]	East [ft]	Latitude	Longitude	DLS [°/100ft]	Comments
3883.00	12.150	297.410	3835.88	-155.91	235.65	-446.32	40°11'16.983"N	104°47'38.967"W	1.42	
3969.00	9.850	296.260	3920.29	-160.72	243.07	-460.96	40°11'17.056"N	104°47'39.155"W	2.69	
4054.00	10.760	300.250	4003.92	-165.54	250.29	-474.33	40°11'17.127"N	104°47'39.328"W	1.36	
4139.00	12.380	296.890	4087.19	-170.98	258.41	-489.31	40°11'17.208"N	104°47'39.521"W	2.06	
4224.00	13.030	295.010	4170.11	-176.16	266.58	-506.12	40°11'17.288"N	104°47'39.737"W	0.91	
4310.00	11.410	294.310	4254.16	-180.82	274.18	-522.66	40°11'17.363"N	104°47'39.951"W	1.89	
4395.00	10.920	295.290	4337.55	-185.07	281.08	-537.60	40°11'17.432"N	104°47'40.143"W	0.62	
4481.00	11.400	294.800	4421.92	-189.43	288.13	-552.69	40°11'17.501"N	104°47'40.337"W	0.57	
4567.00	12.330	295.320	4506.08	-194.07	295.62	-568.70	40°11'17.575"N	104°47'40.544"W	1.09	
4652.00	11.970	299.440	4589.18	-199.45	303.83	-584.58	40°11'17.656"N	104°47'40.748"W	1.10	
4737.00	12.270	300.970	4672.29	-205.67	312.81	-600.00	40°11'17.745"N	104°47'40.947"W	0.52	
4822.00	12.280	298.860	4755.34	-211.87	321.82	-615.66	40°11'17.834"N	104°47'41.149"W	0.53	
4908.00	10.750	300.600	4839.61	-217.69	330.32	-630.58	40°11'17.918"N	104°47'41.341"W	1.82	
4993.00	11.410	302.620	4923.03	-223.76	338.89	-644.48	40°11'18.003"N	104°47'41.520"W	0.90	
5078.00	12.180	302.440	5006.23	-230.46	348.23	-659.13	40°11'18.095"N	104°47'41.709"W	0.91	
5164.00	12.670	299.630	5090.22	-237.14	357.76	-674.99	40°11'18.189"N	104°47'41.913"W	0.90	
5249.00	13.190	297.240	5173.06	-243.19	366.81	-691.71	40°11'18.279"N	104°47'42.129"W	0.88	
5335.00	11.220	299.010	5257.12	-248.88	375.36	-707.75	40°11'18.363"N	104°47'42.336"W	2.33	
5420.00	9.350	302.130	5340.75	-254.21	383.04	-720.84	40°11'18.439"N	104°47'42.504"W	2.29	
5505.00	8.050	302.740	5424.77	-259.14	389.93	-731.69	40°11'18.507"N	104°47'42.644"W	1.53	
5590.00	5.850	302.740	5509.14	-263.15	395.50	-740.34	40°11'18.562"N	104°47'42.755"W	2.59	
5675.00	4.950	301.750	5593.76	-266.20	399.77	-747.10	40°11'18.604"N	104°47'42.843"W	1.06	
5761.00	3.990	288.390	5679.50	-268.03	402.66	-753.10	40°11'18.633"N	104°47'42.920"W	1.64	
5846.00	1.970	290.020	5764.38	-268.73	404.10	-757.28	40°11'18.647"N	104°47'42.974"W	2.38	
5931.00	0.520	298.770	5849.36	-269.11	404.78	-758.99	40°11'18.654"N	104°47'42.996"W	1.72	
6017.00	0.540	298.140	5935.35	-269.37	405.16	-759.69	40°11'18.658"N	104°47'43.005"W	0.02	
6101.00	0.610	309.410	6019.35	-269.71	405.63	-760.38	40°11'18.662"N	104°47'43.014"W	0.16	
6187.00	0.380	299.760	6105.35	-270.03	406.07	-760.98	40°11'18.667"N	104°47'43.021"W	0.28	
6272.00	0.530	251.770	6190.34	-269.94	406.08	-761.60	40°11'18.667"N	104°47'43.029"W	0.46	
6358.00	0.580	231.190	6276.34	-269.43	405.69	-762.32	40°11'18.663"N	104°47'43.039"W	0.24	
6443.00	0.620	227.330	6361.33	-268.74	405.10	-762.99	40°11'18.657"N	104°47'43.047"W	0.07	
6528.00	0.800	250.860	6446.33	-268.09	404.60	-763.89	40°11'18.652"N	104°47'43.059"W	0.40	
6614.00	0.680	246.510	6532.32	-267.52	404.20	-764.92	40°11'18.648"N	104°47'43.072"W	0.15	
6662.00	0.570	263.230	6580.32	-267.29	404.06	-765.42	40°11'18.647"N	104°47'43.079"W	0.44	
6699.00	0.640	245.580	6617.32	-267.13	403.95	-765.79	40°11'18.646"N	104°47'43.083"W	0.54	
6741.00	3.380	179.370	6659.29	-265.78	402.61	-765.99	40°11'18.633"N	104°47'43.086"W	7.56	
6784.00	7.960	175.970	6702.07	-261.64	398.37	-765.77	40°11'18.591"N	104°47'43.083"W	10.68	
6827.00	12.660	176.360	6744.36	-254.16	390.70	-765.26	40°11'18.515"N	104°47'43.076"W	10.93	
6869.00	17.180	177.940	6784.94	-243.61	379.90	-764.75	40°11'18.408"N	104°47'43.070"W	10.80	
6912.00	21.310	179.810	6825.52	-229.69	365.73	-764.49	40°11'18.268"N	104°47'43.067"W	9.71	
6955.00	25.440	180.710	6864.99	-212.87	348.68	-764.58	40°11'18.100"N	104°47'43.068"W	9.64	
6997.00	29.410	179.950	6902.26	-193.80	329.34	-764.68	40°11'17.908"N	104°47'43.069"W	9.49	
7040.00	32.800	178.830	6939.07	-171.96	307.13	-764.44	40°11'17.689"N	104°47'43.066"W	8.00	
7083.00	36.880	180.260	6974.36	-147.80	282.57	-764.26	40°11'17.446"N	104°47'43.064"W	9.68	
7125.00	41.110	180.140	7006.99	-121.75	256.15	-764.35	40°11'17.185"N	104°47'43.065"W	10.07	



Actual Wellpath Report

SARCHET 37N-32HZ AWP

Page 4 of 7



REFERENCE WELLPATH IDENTIFICATION

Operator	KERR-MCGEE OIL & GAS ONSHORE LP	Slot	SLOT#07 SARCHET 37N-32HZ (457'FNL & 266'FEL, SEC.32)
Area	COLORADO	Well	SARCHET 37N-32HZ
Field	WELD COUNTY (KERR MCGEE)	Wellbore	SARCHET 37N-32HZ AWB
Facility	SEC.32-T3N-R66W		

WELLPATH DATA (153 stations) † = interpolated/extrapolated station

MD [ft]	Inclination [°]	Azimuth [°]	TVD [ft]	Vert Sect [ft]	North [ft]	East [ft]	Latitude	Longitude	DLS [°/100ft]	Comments
7168.00	44.460	180.910	7038.55	-92.93	226.95	-764.62	40°11'16.897"N	104°47'43.068"W	7.88	
7211.00	47.300	178.700	7068.48	-62.54	196.08	-764.50	40°11'16.592"N	104°47'43.067"W	7.56	
7253.00	50.700	178.150	7096.03	-31.47	164.40	-763.63	40°11'16.279"N	104°47'43.055"W	8.16	
7296.00	53.540	179.470	7122.43	1.83	130.48	-762.93	40°11'15.943"N	104°47'43.046"W	7.03	
7338.00	57.240	178.220	7146.28	35.76	95.92	-762.23	40°11'15.602"N	104°47'43.037"W	9.14	
7381.00	59.160	178.260	7168.94	71.56	59.40	-761.10	40°11'15.241"N	104°47'43.023"W	4.47	
7424.00	59.170	177.970	7190.98	107.71	22.49	-759.89	40°11'14.876"N	104°47'43.007"W	0.58	
7466.00	63.580	177.650	7211.10	143.76	-14.34	-758.48	40°11'14.512"N	104°47'42.989"W	10.52	
7509.00	68.640	177.630	7228.51	182.17	-53.61	-756.86	40°11'14.124"N	104°47'42.968"W	11.77	
7552.00	74.770	178.320	7242.00	222.11	-94.39	-755.42	40°11'13.721"N	104°47'42.950"W	14.34	
7594.00	79.710	180.310	7251.27	262.37	-135.33	-754.94	40°11'13.317"N	104°47'42.943"W	12.64	
7637.00	84.450	179.650	7257.20	304.31	-177.91	-754.92	40°11'12.896"N	104°47'42.943"W	11.13	
7676.00	88.150	178.320	7259.71	342.53	-216.81	-754.23	40°11'12.511"N	104°47'42.934"W	10.08	
7716.00†	88.635	178.405	7260.83	381.71	-256.78	-753.09	40°11'12.116"N	104°47'42.919"W	1.23	7" Casing Point
7775.00	89.350	178.530	7261.87	439.55	-315.75	-751.51	40°11'11.534"N	104°47'42.899"W	1.23	
7817.00	89.480	178.370	7262.30	480.72	-357.73	-750.38	40°11'11.119"N	104°47'42.884"W	0.49	
7903.00	90.430	180.120	7262.37	565.25	-443.72	-749.24	40°11'10.269"N	104°47'42.870"W	2.32	
7988.00	90.770	180.160	7261.48	649.03	-528.72	-749.45	40°11'09.429"N	104°47'42.872"W	0.40	
8073.00	91.110	179.050	7260.08	732.66	-613.70	-748.86	40°11'08.589"N	104°47'42.865"W	1.37	
8159.00	89.480	178.940	7259.64	817.12	-699.69	-747.36	40°11'07.740"N	104°47'42.845"W	1.90	
8244.00	89.780	179.860	7260.19	900.71	-784.68	-746.47	40°11'06.900"N	104°47'42.834"W	1.14	
8329.00	89.930	179.590	7260.40	984.39	-869.68	-746.06	40°11'06.060"N	104°47'42.829"W	0.36	
8414.00	90.060	179.790	7260.41	1068.06	-954.68	-745.60	40°11'05.220"N	104°47'42.823"W	0.28	
8499.00	90.120	179.750	7260.28	1151.75	-1039.67	-745.26	40°11'04.380"N	104°47'42.818"W	0.08	
8585.00	89.560	180.200	7260.52	1236.48	-1125.67	-745.22	40°11'03.530"N	104°47'42.818"W	0.84	
8670.00	89.320	179.820	7261.35	1320.22	-1210.67	-745.23	40°11'02.690"N	104°47'42.818"W	0.53	
8755.00	89.380	179.780	7262.31	1403.92	-1295.66	-744.94	40°11'01.850"N	104°47'42.814"W	0.08	
8841.00	89.470	179.780	7263.18	1488.59	-1381.66	-744.61	40°11'01.000"N	104°47'42.810"W	0.10	
8926.00	89.660	179.810	7263.82	1572.28	-1466.66	-744.30	40°11'00.160"N	104°47'42.806"W	0.23	
9011.00	89.440	179.450	7264.49	1655.93	-1551.65	-743.75	40°10'59.320"N	104°47'42.799"W	0.50	
9096.00	89.470	180.060	7265.30	1739.62	-1636.65	-743.39	40°10'58.481"N	104°47'42.794"W	0.72	
9182.00	90.980	180.570	7264.96	1824.43	-1722.64	-743.86	40°10'57.631"N	104°47'42.800"W	1.85	
9267.00	91.040	180.700	7263.46	1908.32	-1807.62	-744.81	40°10'56.791"N	104°47'42.812"W	0.17	
9352.00	90.980	180.470	7261.96	1992.20	-1892.60	-745.67	40°10'55.951"N	104°47'42.823"W	0.28	
9437.00	90.060	179.120	7261.19	2075.89	-1977.60	-745.37	40°10'55.111"N	104°47'42.819"W	1.92	
9522.00	90.240	178.870	7260.97	2159.37	-2062.58	-743.88	40°10'54.271"N	104°47'42.800"W	0.36	
9608.00	90.490	179.640	7260.42	2243.91	-2148.57	-742.76	40°10'53.422"N	104°47'42.786"W	0.94	
9693.00	90.270	179.150	7259.86	2327.50	-2233.57	-741.86	40°10'52.582"N	104°47'42.774"W	0.63	
9778.00	90.240	180.440	7259.48	2411.19	-2318.56	-741.56	40°10'51.742"N	104°47'42.770"W	1.52	
9864.00	90.000	181.020	7259.30	2496.10	-2404.56	-742.65	40°10'50.892"N	104°47'42.784"W	0.73	
9949.00	89.600	180.840	7259.60	2580.08	-2489.54	-744.03	40°10'50.052"N	104°47'42.802"W	0.52	
10034.00	89.600	180.750	7260.19	2664.02	-2574.53	-745.21	40°10'49.212"N	104°47'42.817"W	0.11	
10119.00	89.230	180.010	7261.06	2747.86	-2659.53	-745.78	40°10'48.372"N	104°47'42.824"W	0.97	
10205.00	88.710	180.100	7262.60	2832.59	-2745.51	-745.86	40°10'47.523"N	104°47'42.825"W	0.61	
10290.00	89.450	180.560	7263.97	2916.41	-2830.50	-746.35	40°10'46.683"N	104°47'42.832"W	1.03	



Actual Wellpath Report

SARCHET 37N-32HZ AWP

Page 5 of 7



REFERENCE WELLPATH IDENTIFICATION

Operator	KERR-MCGEE OIL & GAS ONSHORE LP	Slot	SLOT#07 SARCHET 37N-32HZ (457'FNL & 266'FEL, SEC.32)
Area	COLORADO	Well	SARCHET 37N-32HZ
Field	WELD COUNTY (KERR MCGEE)	Wellbore	SARCHET 37N-32HZ AWB
Facility	SEC.32-T3N-R66W		

WELLPATH DATA (153 stations)

MD [ft]	Inclination [°]	Azimuth [°]	TVD [ft]	Vert Sect [ft]	North [ft]	East [ft]	Latitude	Longitude	DLS [°/100ft]	Comments
10375.00	89.140	180.820	7265.01	3000.32	-2915.49	-747.37	40°10'45.843"N	104°47'42.845"W	0.48	
10461.00	90.120	181.060	7265.57	3085.29	-3001.47	-748.78	40°10'44.993"N	104°47'42.863"W	1.17	
10546.00	90.430	181.520	7265.16	3169.34	-3086.45	-750.70	40°10'44.154"N	104°47'42.887"W	0.65	
10632.00	90.120	183.180	7264.75	3254.60	-3172.37	-754.22	40°10'43.304"N	104°47'42.933"W	1.96	
10717.00	89.850	180.940	7264.77	3338.81	-3257.31	-757.28	40°10'42.465"N	104°47'42.972"W	2.65	
10803.00	89.660	181.390	7265.14	3423.83	-3343.29	-759.03	40°10'41.615"N	104°47'42.995"W	0.57	
10888.00	89.970	180.030	7265.41	3507.75	-3428.29	-760.08	40°10'40.776"N	104°47'43.008"W	1.64	
10973.00	89.970	180.130	7265.46	3591.52	-3513.29	-760.20	40°10'39.936"N	104°47'43.010"W	0.12	
11059.00	90.000	180.310	7265.48	3676.31	-3599.28	-760.53	40°10'39.086"N	104°47'43.014"W	0.21	
11144.00	89.750	179.730	7265.67	3760.06	-3684.28	-760.56	40°10'38.246"N	104°47'43.014"W	0.74	
11229.00	89.720	179.190	7266.06	3843.67	-3769.28	-759.76	40°10'37.406"N	104°47'43.004"W	0.64	
11314.00	89.960	179.240	7266.30	3927.21	-3854.27	-758.59	40°10'36.566"N	104°47'42.989"W	0.29	
11400.00	90.030	179.180	7266.30	4011.74	-3940.26	-757.41	40°10'35.716"N	104°47'42.974"W	0.11	
11485.00	90.640	179.720	7265.81	4095.34	-4025.26	-756.59	40°10'34.876"N	104°47'42.963"W	0.96	
11570.00	91.380	179.770	7264.31	4179.01	-4110.24	-756.21	40°10'34.036"N	104°47'42.958"W	0.87	
11656.00	91.250	179.500	7262.33	4263.63	-4196.22	-755.67	40°10'33.187"N	104°47'42.951"W	0.35	
11740.00	91.350	178.620	7260.43	4346.12	-4280.18	-754.29	40°10'32.357"N	104°47'42.933"W	1.05	Last BHI MWD Survey
11800.00	91.350	178.620	7259.02	4404.96	-4340.15	-752.84	40°10'31.764"N	104°47'42.915"W	0.00	Projection to Bit

HOLE & CASING SECTIONS - Ref Wellbore: SARCHET 37N-32HZ AWB Ref Wellpath: SARCHET 37N-32HZ AWP

String/Diameter	Start MD [ft]	End MD [ft]	Interval [ft]	Start TVD [ft]	End TVD [ft]	Start N/S [ft]	Start E/W [ft]	End N/S [ft]	End E/W [ft]
13.5in Open Hole	17.00	807.00	790.00	17.00	807.00	0.00	0.00	1.23	0.80
9.625in Casing Surface	17.00	807.00	790.00	17.00	807.00	0.00	0.00	1.23	0.80
8.75in Open Hole	807.00	7724.00	6917.00	807.00	7261.02	1.23	0.80	-264.78	-752.87
7in Casing Intermediate	17.00	7716.00	7699.00	17.00	7260.83	0.00	0.00	-256.78	-753.09
6.125in Open Hole	7716.00	11800.00	4084.00	7260.83	7259.02	-256.78	-753.09	-4340.15	-752.84



Actual Wellpath Report

SARCHET 37N-32HZ AWP

Page 6 of 7



REFERENCE WELLPATH IDENTIFICATION

Operator	KERR-MCGEE OIL & GAS ONSHORE LP	Slot	SLOT#07 SARCHET 37N-32HZ (457'FNL & 266'FEL, SEC.32)
Area	COLORADO	Well	SARCHET 37N-32HZ
Field	WELD COUNTY (KERR MCGEE)	Wellbore	SARCHET 37N-32HZ AWB
Facility	SEC.32-T3N-R66W		

TARGETS

Name	MD [ft]	TVD [ft]	North [ft]	East [ft]	Grid East [US ft]	Grid North [US ft]	Latitude	Longitude	Shape
SARCHET 1-32HZ PAD SECTION LINES		0.00	0.81	29.88	3197675.00	1311903.36	40°11'14.662"N	104°47'32.831"W	polygon
SARCHET 37N-32HZ BHL ON PLAT (460'FSL & 1020'FEL, SEC.32) REV-1		7261.00	-4366.10	-760.09	3196919.93	1307530.48	40°10'31.508"N	104°47'43.008"W	point
SARCHET 1-32HZ PAD HARDLINES (460' SETBACKS)		7450.00	0.81	29.88	3197675.00	1311903.36	40°11'14.662"N	104°47'32.831"W	polygon

WELLPATH COMPOSITION - Ref Wellbore: SARCHET 37N-32HZ AWB Ref Wellpath: SARCHET 37N-32HZ AWP

Start MD [ft]	End MD [ft]	Positional Uncertainty Model	Log Name/Comment	Wellbore
17.00	775.00	Generic gyro - continuous (Standard)	GYRODATA SURVEYS <117-775>	SARCHET 37N-32HZ AWB
775.00	7676.00	NaviTrak (Standard)	BHI MWD SURVEYS 8 3/4" HOLE <865-7676>	SARCHET 37N-32HZ AWB
7676.00	11740.00	OnTrak (Standard)	BHI MWD SURVEYS 6 1/8" HOLE <7775-11740>	SARCHET 37N-32HZ AWB
11740.00	11800.00	Blind Drilling (std)	Projection to bit	SARCHET 37N-32HZ AWB



Actual Wellpath Report

SARCHET 37N-32HZ AWP

Page 7 of 7



REFERENCE WELLPATH IDENTIFICATION

Operator	KERR-MCGEE OIL & GAS ONSHORE LP	Slot	SLOT#07 SARCHET 37N-32HZ (457'FNL & 266'FEL, SEC.32)
Area	COLORADO	Well	SARCHET 37N-32HZ
Field	WELD COUNTY (KERR MCGEE)	Wellbore	SARCHET 37N-32HZ AWB
Facility	SEC.32-T3N-R66W		

WELLPATH COMMENTS

MD [ft]	Inclination [°]	Azimuth [°]	TVD [ft]	Comment
17.00	0.000	84.190	17.00	Tie-On
117.00	0.430	84.190	117.00	Begin GYRO Surveys
775.00	0.270	42.910	775.00	Tie-Into GYRO Surveys
865.00	0.490	193.350	864.99	Begin BHI MWD Surveys
7716.00	88.635	178.405	7260.83	7" Casing Point
11740.00	91.350	178.620	7260.43	Last BHI MWD Survey
11800.00	91.350	178.620	7259.02	Projection to Bit