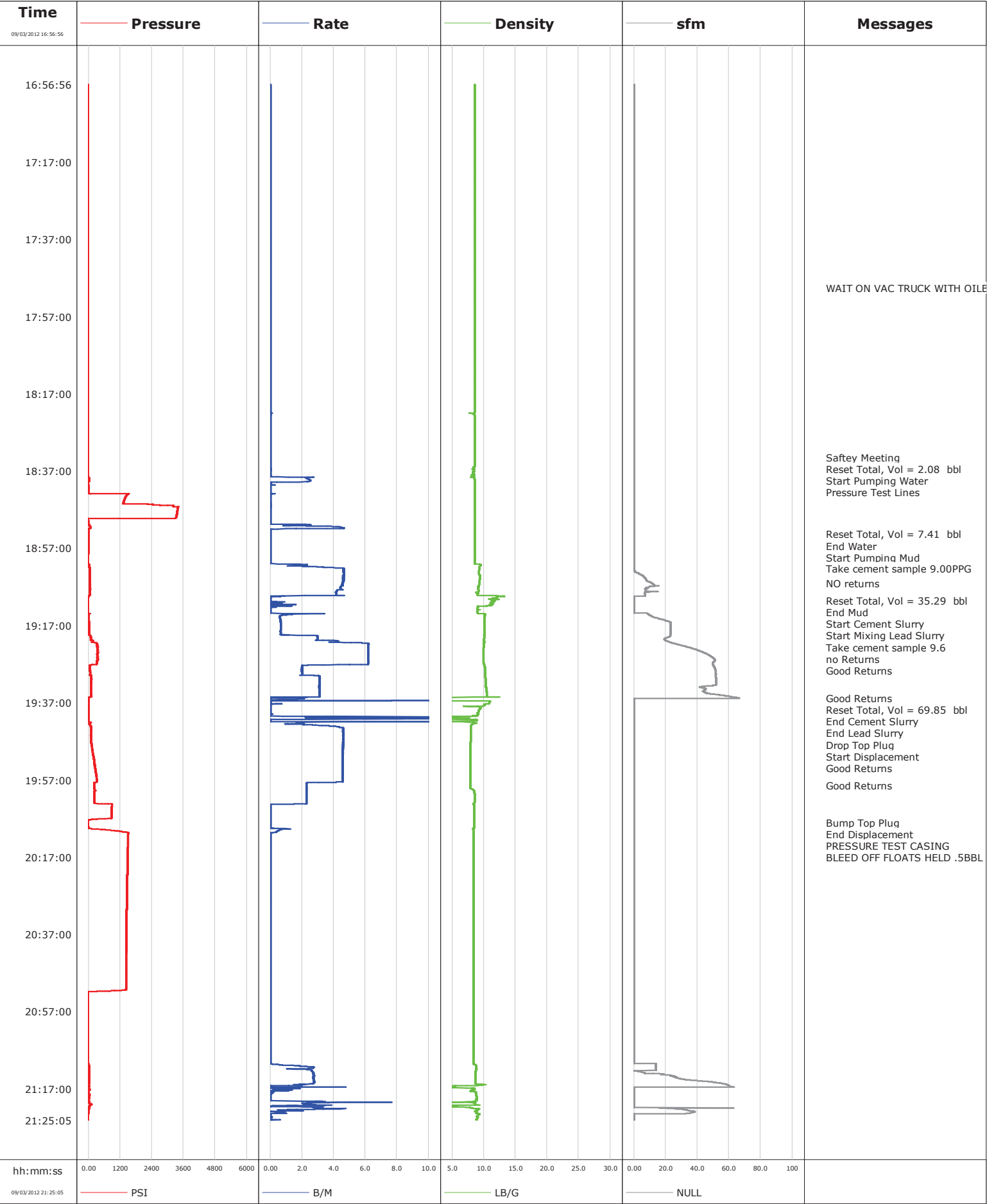


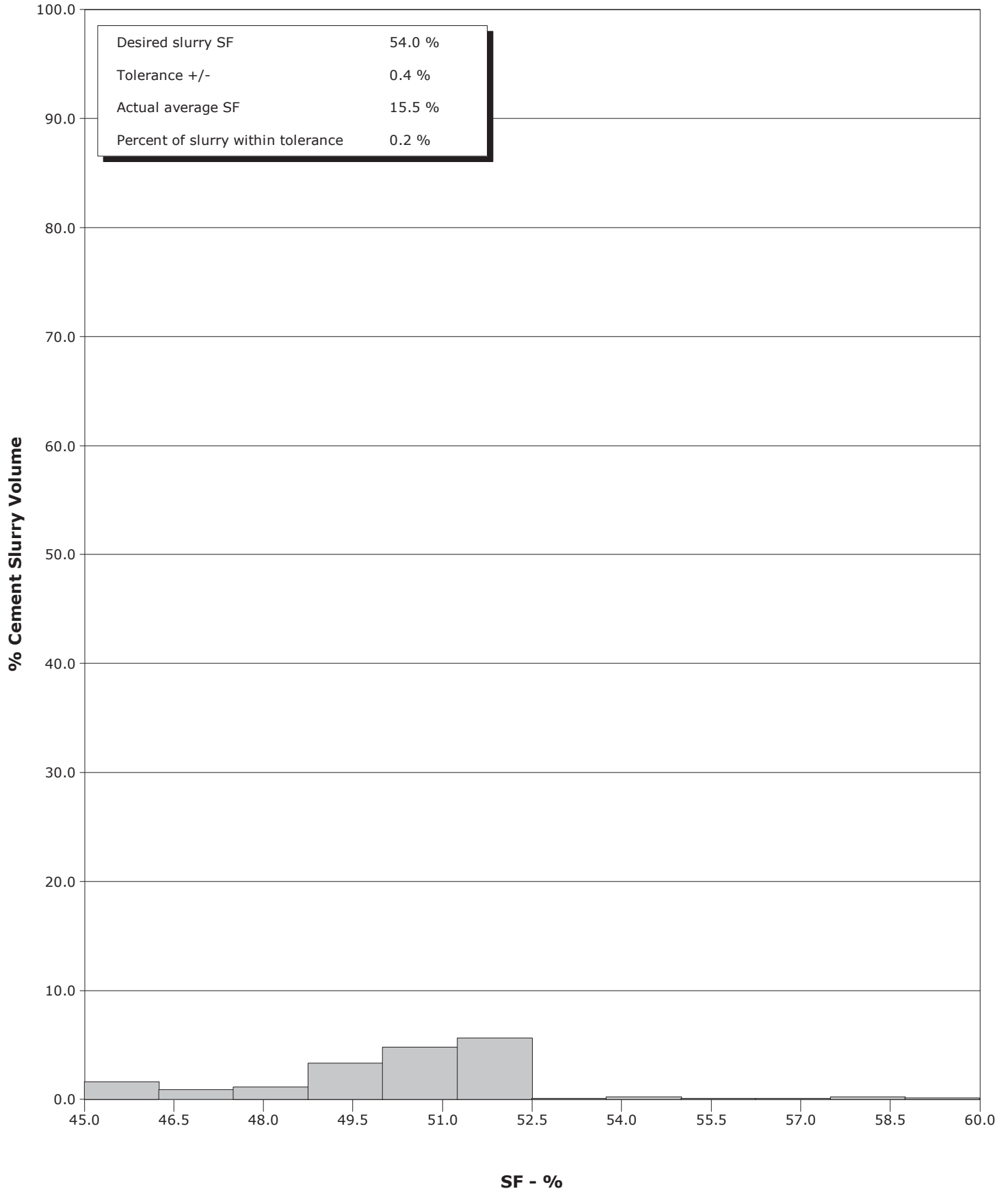
Well	Wood Gulch I-36	Client	SHELL ROCKIES
Field	Wildcat	SIR No.	C459-00396
Engineer	William Adkison	Job Type	INTERMEDIATE
Country	United States	Job Date	09-03-2012



Well Wood Gulch I-36
Field Wildcat
Engineer William Adkison
Country United States

Client SHELL ROCKIES
SIR No. C459-00396
Job Type INTERMEDIATE
Job Date 09-03-2012

Cement Slurry - 09/03/2012 16:56:56 to 09/03/2012 20:06:53



				Customer SHELL ROCKIES			Job Number C459-00396				
Well Wood Gulch 1-36			Location (legal) Rock Springs, wy			Schlumberger Location			Job Start Sep/03/2012		
Field Wildcat		Formation Name/Type		Deviation deg		Bit Size 9.0 in		Well MD 3858.0 ft		Well TVD 3858.0 ft	
County Moffat		State/Province Colorado		BHP psi		BHST 96 degF		BHCT 87 degF		Pore Press. Gradient lb/gal	
Well Master 061389313		API/UWI 05081077310000									
Rig Name N 94		Drilled For Gas		Service Via Land		Casing/Liner					
						Depth, ft		Size, in		Weight, lb/ft	
Offshore Zone		Well Class New		Well Type Development		1736.0		7.6		29.7	
						0.0		0.0		0.0	
Drilling Fluid Type		Max. Density lb/gal		Plastic Viscosity cP		Tubing/Drill Pipe					
						T/D		Depth, ft		Size, in	
Service Line Cementing		Job Type INTERMEDIATE									
Max. Allowed Tub. Press 3500 psi		Max. Allowed Ann. Press psi		WH Connection Single Cement head		Perforations/Open Hole					
						Top, ft		Bottom, ft		shot/ft	
										No. of Shots	
										Total Interval ft	
Service Instructions provide services for a 7 5/8 inter						ft		ft			
						ft		ft		Diameter in	
						ft		ft			
		Treat Down Casing		Displacement 79.6 bbl		Packer Type		Packer Depth ft			
		Tubing Vol. bbl		Casing Vol. 79.6 bbl		Annular Vol. 58.2 bbl		Openhole Vol. 58.2 bbl			
Casing/Tubing Secured <input checked="" type="checkbox"/>		1 Hole Vol. Circulated prior to Cement <input checked="" type="checkbox"/>				Casing Tools		Squeeze Job			
Lift Pressure psi						Shoe Type Float		Squeeze Type			
Pipe Rotated <input type="checkbox"/>		Pipe Reciprocated <input type="checkbox"/>				Shoe Depth 1736.0 ft		Tool Type			
No. Centralizers 13		Top Plugs 1		Bottom Plugs		Stage Tool Type		Tool Depth ft			
Cement Head Type Single						Stage Tool Depth ft		Tail Pipe Size in			
Job Scheduled For Sep/03/2012 14:00		Arrived on Location Sep/03/2012 14:00		Leave Location Sep/03/2012 21:00		Collar Type Float		Tail Pipe Depth ft			
						Collar Depth 1689.0 ft		Sqz. Total Vol. bbl			
Date	Time 24-hr clock	Treating Pressure PSI	Flow Rate B/M	Density LB/G	Volume BBL	Message					
09/03/2012	16:56:56	-13	0.0	8.53	0.0	Started Acquisition					
09/03/2012	16:57:56	-14	0.0	8.53	0.0						
09/03/2012	16:58:56	-14	0.0	8.53	0.0						
09/03/2012	16:59:56	-14	0.0	8.53	0.1						
09/03/2012	17:00:56	-14	0.0	8.53	0.1						
09/03/2012	17:01:56	-14	0.0	8.53	0.1						
09/03/2012	17:02:56	-14	0.0	8.53	0.1						
09/03/2012	17:03:56	-14	0.0	8.53	0.2						
09/03/2012	17:04:56	-14	0.0	8.53	0.2						
09/03/2012	17:05:56	-14	0.0	8.53	0.2						
09/03/2012	17:06:56	-13	0.0	8.53	0.2						
09/03/2012	17:07:56	-14	0.0	8.53	0.2						
09/03/2012	17:08:56	-13	0.0	8.53	0.3						
09/03/2012	17:09:56	-13	0.0	8.53	0.3						
09/03/2012	17:10:56	-14	0.0	8.53	0.3						
09/03/2012	17:11:56	-13	0.0	8.53	0.3						
09/03/2012	17:12:56	-14	0.0	8.53	0.4						
09/03/2012	17:13:56	-13	0.0	8.53	0.4						
09/03/2012	17:14:56	-13	0.0	8.53	0.4						
09/03/2012	17:15:56	-13	0.0	8.53	0.4						
09/03/2012	17:16:56	-13	0.0	8.53	0.4						

Well			Field		Job Start	Customer	Job Number
Wood Gulch 1-36			Wildcat		Sep/03/2012	SHELL ROCKIES	C459-00396
Date	Time 24-hr clock	Treating Pressure PSI	Flow Rate B/M	Density LB/G	Volume BBL	Message	
09/03/2012	17:18:56	-13	0.0	8.53	0.5		
09/03/2012	17:19:56	-13	0.0	8.53	0.5		
09/03/2012	17:20:56	-13	0.0	8.53	0.5		
09/03/2012	17:21:56	-12	0.0	8.53	0.6		
09/03/2012	17:22:56	-13	0.0	8.53	0.6		
09/03/2012	17:23:56	-13	0.0	8.53	0.6		
09/03/2012	17:24:56	-13	0.0	8.53	0.6		
09/03/2012	17:25:56	-13	0.0	8.53	0.6		
09/03/2012	17:26:56	-13	0.0	8.53	0.7		
09/03/2012	17:27:56	-13	0.0	8.53	0.7		
09/03/2012	17:28:56	-12	0.0	8.53	0.7		
09/03/2012	17:29:56	-13	0.0	8.53	0.7		
09/03/2012	17:30:56	-13	0.0	8.53	0.8		
09/03/2012	17:31:56	-12	0.0	8.53	0.8		
09/03/2012	17:32:56	-12	0.0	8.53	0.8		
09/03/2012	17:33:56	-12	0.0	8.53	0.8		
09/03/2012	17:34:56	-12	0.0	8.53	0.8		
09/03/2012	17:35:56	-12	0.0	8.53	0.9		
09/03/2012	17:36:56	-11	0.0	8.53	0.9		
09/03/2012	17:37:56	-12	0.0	8.53	0.9		
09/03/2012	17:38:56	-11	0.0	8.53	0.9		
09/03/2012	17:39:56	-12	0.0	8.53	1.0		
09/03/2012	17:40:56	-11	0.0	8.53	1.0		
09/03/2012	17:41:56	-11	0.0	8.53	1.0		
09/03/2012	17:42:56	-11	0.0	8.53	1.0		
09/03/2012	17:43:56	-11	0.0	8.53	1.0		
09/03/2012	17:44:56	-11	0.0	8.53	1.1		
09/03/2012	17:45:56	-11	0.0	8.53	1.1		
09/03/2012	17:46:56	-11	0.0	8.53	1.1		
09/03/2012	17:47:56	-11	0.0	8.53	1.1		
09/03/2012	17:48:56	-11	0.0	8.53	1.1		
09/03/2012	17:49:42	-11	0.0	8.53	1.2	WAIT ON VAC TRUCK WITH OILBASED MUD	
09/03/2012	17:49:56	-11	0.0	8.53	1.2		
09/03/2012	17:50:56	-11	0.0	8.53	1.2		
09/03/2012	17:51:56	-11	0.0	8.53	1.2		
09/03/2012	17:52:56	-11	0.0	8.53	1.2		
09/03/2012	17:53:56	-10	0.0	8.53	1.2		
09/03/2012	17:54:56	-10	0.0	8.53	1.3		
09/03/2012	17:55:56	-10	0.0	8.53	1.3		
09/03/2012	17:56:56	-11	0.0	8.53	1.3		
09/03/2012	17:57:56	-11	0.0	8.53	1.3		
09/03/2012	17:58:56	-11	0.0	8.53	1.4		
09/03/2012	17:59:56	-11	0.0	8.53	1.4		
09/03/2012	18:00:56	-11	0.0	8.53	1.4		
09/03/2012	18:01:56	-11	0.0	8.53	1.4		
09/03/2012	18:02:56	-11	0.0	8.53	1.4		
09/03/2012	18:03:56	-11	0.0	8.53	1.5		
09/03/2012	18:04:56	-11	0.0	8.53	1.5		
09/03/2012	18:05:56	-11	0.0	8.53	1.5		
09/03/2012	18:06:56	-11	0.0	8.53	1.5		
09/03/2012	18:07:56	-11	0.0	8.53	1.6		
09/03/2012	18:08:56	-11	0.0	8.53	1.6		
09/03/2012	18:09:56	-11	0.0	8.53	1.6		
09/03/2012	18:10:56	-10	0.0	8.53	1.6		

Well			Field		Job Start	Customer	Job Number
Wood Gulch 1-36			Wildcat		Sep/03/2012	SHELL ROCKIES	C459-00396
Date	Time 24-hr clock	Treating Pressure PSI	Flow Rate B/M	Density LB/G	Volume BBL	Message	
09/03/2012	18:12:56	-11	0.0	8.53	1.7		
09/03/2012	18:13:56	-10	0.0	8.53	1.7		
09/03/2012	18:14:56	-11	0.0	8.53	1.7		
09/03/2012	18:15:56	-10	0.0	8.53	1.7		
09/03/2012	18:16:56	-10	0.0	8.53	1.7		
09/03/2012	18:17:56	-10	0.0	8.53	1.8		
09/03/2012	18:18:56	-10	0.0	8.53	1.8		
09/03/2012	18:19:56	-11	0.0	8.53	1.8		
09/03/2012	18:20:56	-10	0.0	8.53	1.8		
09/03/2012	18:21:56	-10	0.0	8.53	1.8		
09/03/2012	18:22:56	-10	0.0	8.52	1.9		
09/03/2012	18:23:56	-10	0.0	8.52	1.9		
09/03/2012	18:24:56	-10	0.0	8.52	1.9		
09/03/2012	18:25:56	-10	0.0	8.52	1.9		
09/03/2012	18:26:56	-9	0.0	8.52	1.9		
09/03/2012	18:27:56	-10	0.0	8.52	2.0		
09/03/2012	18:28:56	-10	0.0	8.52	2.0		
09/03/2012	18:29:56	-9	0.0	8.52	2.0		
09/03/2012	18:30:56	-9	0.0	8.52	2.0		
09/03/2012	18:31:56	-9	0.0	8.52	2.0		
09/03/2012	18:32:56	-9	0.0	8.52	2.1		
09/03/2012	18:33:29	-12	0.0	8.52	2.1	Saftey Meeting	
09/03/2012	18:33:56	-12	0.0	8.52	2.1		
09/03/2012	18:34:12	-12	0.0	8.52	2.1	Reset Total, Vol = 2.08 bbl	
09/03/2012	18:34:27	-12	0.0	8.52	0.0	Start Pumping Water	
09/03/2012	18:34:30	-12	0.0	8.52	0.0	Pressure Test Lines	
09/03/2012	18:34:56	-12	0.0	8.52	0.0		
09/03/2012	18:35:56	-12	0.0	8.52	0.0		
09/03/2012	18:36:56	-12	0.0	8.45	0.1		
09/03/2012	18:37:56	-13	0.0	8.48	0.1		
09/03/2012	18:38:56	19	2.3	8.51	0.9		
09/03/2012	18:39:56	-5	0.2	8.53	3.2		
09/03/2012	18:40:56	12	0.0	8.53	3.2		
09/03/2012	18:41:56	4	0.0	8.53	3.2		
09/03/2012	18:42:56	83	0.1	8.53	3.3		
09/03/2012	18:43:56	1392	0.0	8.53	3.3		
09/03/2012	18:44:56	1338	0.0	8.53	3.3		
09/03/2012	18:45:56	2759	0.0	8.53	3.3		
09/03/2012	18:46:56	3371	0.0	8.53	3.3		
09/03/2012	18:47:56	3348	0.0	8.53	3.4		
09/03/2012	18:48:56	3328	0.0	8.53	3.4		
09/03/2012	18:49:56	-5	0.0	8.53	3.4		
09/03/2012	18:50:56	27	2.4	8.53	3.6		
09/03/2012	18:51:56	41	4.6	8.53	7.1		
09/03/2012	18:52:56	2	0.0	8.53	7.4		
09/03/2012	18:53:18	1	0.0	8.53	7.4	Reset Total, Vol = 7.41 bbl	
09/03/2012	18:53:21	1	0.0	8.53	0.0	End Water	
09/03/2012	18:53:27	1	0.0	8.53	0.0	Start Pumping Mud	
09/03/2012	18:53:56	1	0.0	8.53	0.0		
09/03/2012	18:54:56	1	0.0	8.53	0.0		
09/03/2012	18:55:56	1	0.0	8.53	0.0		
09/03/2012	18:56:56	1	0.0	8.53	0.1		
09/03/2012	18:57:56	0	0.0	8.53	0.1		
09/03/2012	18:58:56	-0	0.0	8.53	0.1		

Well			Field		Job Start	Customer	Job Number
Wood Gulch 1-36			Wildcat		Sep/03/2012	SHELL ROCKIES	C459-00396
Date	Time 24-hr clock	Treating Pressure PSI	Flow Rate B/M	Density LB/G	Volume BBL	Message	
09/03/2012	19:00:56	-0	0.0	8.53	0.1		
09/03/2012	19:01:56	34	3.3	9.31	1.9		
09/03/2012	19:02:17	54	4.6	9.30	3.3	Take cement sample 9.00PPG	
09/03/2012	19:02:56	54	4.7	9.27	6.4		
09/03/2012	19:03:56	52	4.6	9.32	11.0		
09/03/2012	19:04:56	52	4.6	9.37	15.6		
09/03/2012	19:05:56	53	4.6	9.33	20.2		
09/03/2012	19:06:07	55	4.6	9.32	21.1	NO returns	
09/03/2012	19:06:56	51	4.5	9.08	24.8		
09/03/2012	19:07:56	54	4.2	9.13	29.2		
09/03/2012	19:08:56	50	4.2	9.03	33.4		
09/03/2012	19:09:56	-1	0.0	11.78	35.3		
09/03/2012	19:10:34	-1	0.0	11.40	35.3	Reset Total, Vol = 35.29 bbl	
09/03/2012	19:10:36	-2	0.0	11.72	0.0	End Mud	
09/03/2012	19:10:38	-2	0.0	11.84	0.0	Start Cement Slurry	
09/03/2012	19:10:39	-2	0.0	11.76	0.0	Start Mixing Lead Slurry	
09/03/2012	19:10:56	-3	0.6	11.30	0.0		
09/03/2012	19:11:56	-1	0.8	10.66	0.4		
09/03/2012	19:12:56	-2	0.0	9.40	0.6		
09/03/2012	19:13:56	44	2.2	9.37	0.6		
09/03/2012	19:14:56	16	0.6	10.10	1.7		
09/03/2012	19:15:56	18	0.6	10.09	2.3		
09/03/2012	19:16:56	22	0.7	10.08	2.9		
09/03/2012	19:17:56	22	0.7	10.09	3.6		
09/03/2012	19:18:56	22	0.7	10.09	4.2		
09/03/2012	19:19:56	89	3.0	10.07	5.7		
09/03/2012	19:20:56	156	4.1	10.02	8.8		
09/03/2012	19:21:33	305	5.8	10.01	11.5	Take cement sample 9.6	
09/03/2012	19:21:53	328	6.2	9.99	13.5	no Returns	
09/03/2012	19:21:56	325	6.2	9.99	13.8		
09/03/2012	19:22:56	352	6.2	9.97	20.0		
09/03/2012	19:23:56	340	6.2	9.95	26.1		
09/03/2012	19:24:48	347	6.2	9.94	31.5	Good Returns	
09/03/2012	19:24:56	356	6.2	9.95	32.3		
09/03/2012	19:25:56	349	6.2	9.97	38.5		
09/03/2012	19:26:56	321	6.2	10.00	44.6		
09/03/2012	19:27:56	49	2.0	10.15	47.9		
09/03/2012	19:28:56	58	2.0	10.22	49.9		
09/03/2012	19:29:56	94	2.5	10.27	51.9		
09/03/2012	19:30:56	108	3.1	10.28	55.0		
09/03/2012	19:31:56	98	3.1	10.29	58.1		
09/03/2012	19:32:56	108	3.1	10.34	61.2		
09/03/2012	19:33:56	99	3.1	10.42	64.3		
09/03/2012	19:34:56	109	3.1	10.48	67.4		
09/03/2012	19:35:48	17	0.0	3.43	69.5	Good Returns	
09/03/2012	19:35:56	10	2.1	1.90	69.7		
09/03/2012	19:36:01	9	2.1	0.36	69.8	Reset Total, Vol = 69.85 bbl	
09/03/2012	19:36:02	8	2.1	0.32	0.0	End Cement Slurry	
09/03/2012	19:36:04	7	2.1	0.30	0.1	End Lead Slurry	
09/03/2012	19:36:05	8	2.1	0.28	0.1	Drop Top Plug	
09/03/2012	19:36:34	7	0.2	10.54	1.1	Good Returns	
09/03/2012	19:36:56	7	0.0	10.89	1.1		
09/03/2012	19:37:56	9	0.0	9.86	1.1		
09/03/2012	19:38:56	7	0.0	9.28	1.1		

Well			Field		Job Start	Customer	Job Number
Wood Gulch 1-36			Wildcat		Sep/03/2012	SHELL ROCKIES	C459-00396
Date	Time 24-hr clock	Treating Pressure PSI	Flow Rate B/M	Density LB/G	Volume BBL	Message	
09/03/2012	19:40:56	8	2.3	6.30	2.9		
09/03/2012	19:41:56	7	0.0	0.20	5.0		
09/03/2012	19:42:56	74	3.1	7.98	8.3		
09/03/2012	19:43:56	96	4.6	7.94	12.6		
09/03/2012	19:44:56	95	4.6	7.94	17.2		
09/03/2012	19:45:56	97	4.6	7.91	21.8		
09/03/2012	19:46:56	102	4.6	7.91	26.4		
09/03/2012	19:47:56	122	4.6	7.89	31.0		
09/03/2012	19:48:56	147	4.6	7.89	35.6		
09/03/2012	19:49:56	162	4.6	7.89	40.2		
09/03/2012	19:50:56	184	4.6	7.89	44.8		
09/03/2012	19:51:56	212	4.6	7.89	49.4		
09/03/2012	19:52:56	229	4.6	7.89	53.9		
09/03/2012	19:53:56	252	4.6	7.89	58.5		
09/03/2012	19:54:56	279	4.6	7.89	63.1		
09/03/2012	19:55:56	299	4.6	7.89	67.6		
09/03/2012	19:56:56	312	4.6	7.89	72.2		
09/03/2012	19:57:56	211	2.3	7.88	76.2		
09/03/2012	19:58:29	218	2.3	7.89	77.4	Good Returns	
09/03/2012	19:58:56	219	2.3	7.89	78.5		
09/03/2012	19:59:56	238	2.3	8.47	80.7		
09/03/2012	20:00:56	226	2.3	8.53	83.0		
09/03/2012	20:01:56	234	2.3	8.53	85.3		
09/03/2012	20:02:56	234	2.3	8.52	87.6		
09/03/2012	20:03:56	882	0.0	8.50	88.4		
09/03/2012	20:04:56	876	0.0	8.50	88.4		
09/03/2012	20:05:56	872	0.0	8.50	88.4		
09/03/2012	20:06:56	869	0.0	8.51	88.4		
09/03/2012	20:07:56	-4	0.0	8.51	88.5		
09/03/2012	20:07:57	-5	0.0	8.51	88.5	Bump Top Plug	
09/03/2012	20:08:10	-4	0.0	8.51	88.5	PRESSURE TEST CASING	
09/03/2012	20:08:38	-3	0.0	8.51	88.5	BLEED OFF FLOATS HELD .5BBL	
09/03/2012	20:08:56	-2	0.0	8.51	88.5		
09/03/2012	20:09:56	638	0.6	8.36	88.7		
09/03/2012	20:10:56	1505	0.0	8.43	89.1		
09/03/2012	20:11:56	1497	0.0	8.43	89.1		
09/03/2012	20:12:56	1492	0.0	8.43	89.1		
09/03/2012	20:13:56	1489	0.0	8.43	89.1		
09/03/2012	20:14:56	1485	0.0	8.43	89.1		
09/03/2012	20:15:56	1482	0.0	8.43	89.1		
09/03/2012	20:16:56	1480	0.0	8.43	89.1		
09/03/2012	20:17:56	1477	0.0	8.43	89.1		
09/03/2012	20:18:56	1474	0.0	8.43	89.1		
09/03/2012	20:19:56	1472	0.0	8.43	89.1		
09/03/2012	20:20:56	1470	0.0	8.43	89.1		
09/03/2012	20:21:56	1467	0.0	8.43	89.1		
09/03/2012	20:22:56	1465	0.0	8.43	89.1		
09/03/2012	20:23:56	1463	0.0	8.43	89.1		
09/03/2012	20:24:56	1461	0.0	8.43	89.1		
09/03/2012	20:25:56	1459	0.0	8.43	89.1		
09/03/2012	20:26:56	1457	0.0	8.43	89.1		
09/03/2012	20:27:56	1455	0.0	8.43	89.1		
09/03/2012	20:28:56	1453	0.0	8.43	89.1		
09/03/2012	20:29:56	1451	0.0	8.43	89.1		

Well			Field		Job Start	Customer	Job Number
Wood Gulch 1-36			Wildcat		Sep/03/2012	SHELL ROCKIES	C459-00396
Date	Time 24-hr clock	Treating Pressure PSI	Flow Rate B/M	Density LB/G	Volume BBL	Message	
09/03/2012	20:31:56	1448	0.0	8.43	89.1		
09/03/2012	20:32:56	1446	0.0	8.43	89.1		
09/03/2012	20:33:56	1443	0.0	8.43	89.1		
09/03/2012	20:34:56	1442	0.0	8.43	89.1		
09/03/2012	20:35:56	1440	0.0	8.43	89.1		
09/03/2012	20:36:56	1439	0.0	8.43	89.1		
09/03/2012	20:37:56	1437	0.0	8.43	89.1		
09/03/2012	20:38:56	1436	0.0	8.43	89.1		
09/03/2012	20:39:56	1434	0.0	8.43	89.1		
09/03/2012	20:40:56	1433	0.0	8.43	89.1		
09/03/2012	20:41:56	1431	0.0	8.43	89.1		
09/03/2012	20:42:56	1430	0.0	8.42	89.1		
09/03/2012	20:43:56	1427	0.0	8.43	89.1		
09/03/2012	20:44:56	1426	0.0	8.42	89.1		
09/03/2012	20:45:56	1424	0.0	8.42	89.1		
09/03/2012	20:46:56	1422	0.0	8.42	89.1		
09/03/2012	20:47:56	1422	0.0	8.42	89.1		
09/03/2012	20:48:56	1419	0.0	8.42	89.1		
09/03/2012	20:49:56	1417	0.0	8.42	89.1		
09/03/2012	20:50:56	1415	0.0	8.42	89.1		
09/03/2012	20:51:56	-4	0.0	8.42	89.1		
09/03/2012	20:52:56	-2	0.0	8.42	89.1		
09/03/2012	20:53:56	-2	0.0	8.42	89.1		
09/03/2012	20:54:56	-3	0.0	8.42	89.1		
09/03/2012	20:55:56	-3	0.0	8.42	89.1		
09/03/2012	20:56:56	-3	0.0	8.42	89.1		
09/03/2012	20:57:56	-3	0.0	8.42	89.1		
09/03/2012	20:58:56	-4	0.0	8.42	89.1		
09/03/2012	20:59:56	-3	0.0	8.42	89.1		
09/03/2012	21:00:56	-4	0.0	8.42	89.1		
09/03/2012	21:01:56	-4	0.0	8.42	89.1		
09/03/2012	21:02:56	-3	0.0	8.42	89.1		
09/03/2012	21:03:56	-4	0.0	8.42	89.1		
09/03/2012	21:04:56	-4	0.0	8.42	89.1		
09/03/2012	21:05:56	-3	0.0	8.42	89.1		
09/03/2012	21:06:56	-4	0.0	8.42	89.1		
09/03/2012	21:07:56	-4	0.0	8.42	89.1		
09/03/2012	21:08:56	-4	0.0	8.42	89.1		
09/03/2012	21:09:56	-4	0.0	8.42	89.1		
09/03/2012	21:10:56	25	1.2	8.78	89.3		
09/03/2012	21:11:56	25	1.7	8.81	91.5		
09/03/2012	21:12:56	30	2.7	8.73	94.1		
09/03/2012	21:13:56	27	2.7	8.68	96.8		
09/03/2012	21:14:56	27	2.8	8.65	99.5		
09/03/2012	21:15:56	4	2.2	9.98	102.2		
09/03/2012	21:16:56	4	1.9	8.19	102.9		
09/03/2012	21:17:56	6	0.1	8.69	103.4		
09/03/2012	21:18:56	33	0.0	8.83	103.5		
09/03/2012	21:19:56	3	0.0	8.84	103.5		
09/03/2012	21:20:56	72	2.2	8.53	105.8		
09/03/2012	21:21:56	36	2.9	7.91	107.9		
09/03/2012	21:22:56	4	0.0	8.80	110.0		
09/03/2012	21:23:56	-6	0.0	9.07	110.3		

Well Wood Gulch !-36	Field Wildcat	Job Start Sep/03/2012	Customer SHELL ROCKIES	Job Number C459-00396
--------------------------------	-------------------------	---------------------------------	----------------------------------	---------------------------------

Post Job Summary

Average Pump Rates, bbl/min					Volume of Fluid Injected, bbl			
Slurry 1.1	N2	Mud 2.2	Maximum Rate 25.0		Total Slurry 110.3	Mud 0.0	Spacer 0.0	N2
Treating Pressure Summary, psi					Breakdown Fluid			
Maximum 3398	Final -7	Average 654	Bump Plug to 873	Breakdown	Type	Volume bbl		Density lb/gal
Avg. N2 Percent %		Designed Slurry Volume 72.0 bbl	Displacement 88.3 bbl	Mix Water Temp 87 degF	Cement Circulated to Surface? <input type="checkbox"/>		Volume bbl	
					Washed Thru Perfs <input type="checkbox"/>		To ft	
Customer or Authorized Representative Steve Whitson			Schlumberger Supervisor William Adkison			Circulation Lost <input checked="" type="checkbox"/>		Job Completed <input checked="" type="checkbox"/>
						-		-