

WELL LOCATION PLAT T9N, R59W, 6th P.M.

Private Alum. Cap
LS #17492

N89°42'59"E - 2634.03' (Meas.)

N89°47'52"E - 2627.23' (Meas.)

UELS Alum. Cap

2012 UELS 2 1/2"
Alum. Cap on 3/4"
Rebar, 0.4' Below
Ground,
PLS 28285

NOTE:
SEE LOCATION DRAWING FOR
EXISTING IMPROVEMENTS WITHIN 400'
OF THE PROPOSED DISTURBANCE.

2010 UELS Alum. Cap,
0.4' Above Ground

23

UELS Alum. Cap

CASTOR FEDERAL LC23-62HN
Elev. Ungraded Ground = 4847'

Target Bottom Hole

PROPERTY
LINE

2010 UELS Alum.
Cap, 0.7' Above
Ground

N89°40'12"W
2625.99' (Meas.)

2012 UELS 2 1/2"
Alum. Cap on 3/4"
Rebar, 1.0' High,
Mound of Stones

N89°40'12"W
2625.99' (Meas.)

Set Marked Stone

LEGEND:

└─┘ = 90° SYMBOL

● = PROPOSED WELL HEAD.

▲ = SECTION CORNERS LOCATED.

FEATURE TABLE

EXISTING FEATURE	DIRECTION	LENGTH
PROPERTY LINE	SOUTH	400'

PDOP = 1.7

NAD 83 (TARGET BOTTOM HOLE)

LATITUDE = 40°43'50.88" (40.730800)
LONGITUDE = 103°56'16.90" (103.938028)

NAD 83 (SURFACE LOCATION)

LATITUDE = 40°43'48.50" (40.730139)
LONGITUDE = 103°57'10.55" (103.952931)

NOBLE ENERGY, INC.

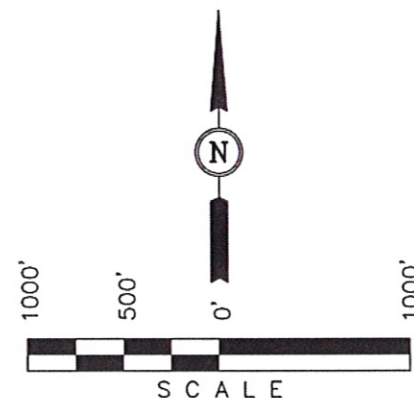
Well location, CASTOR FEDERAL LC23-62HN,
located as shown in the SW 1/4 SW 1/4 of
Section 23, T9N, R59W, 6th P.M., Weld County,
Colorado.

BASIS OF ELEVATION

SPOT ELEVATION LOCATED AT THE NORTHEAST CORNER OF
SECTION 15, T9N, R58W, 6th P.M. TAKEN FROM THE
GATEHOOK SPRING, QUADRANGLE, COLORADO, WELD COUNTY,
7.5 MINUTE QUAD (TOPOGRAPHIC MAP) PUBLISHED BY THE
UNITED STATES DEPARTMENT OF THE INTERIOR, GEOLOGICAL
SURVEY. SAID ELEVATION IS MARKED AS BEING 4679 FEET.

BASIS OF BEARINGS

BASIS OF BEARINGS IS A G.P.S. OBSERVATION.



CERTIFICATE

THIS IS TO CERTIFY THAT THE ABOVE PLAT WAS PREPARED FROM
FIELD NOTES OF ACTUAL SURVEYS MADE BY ME OR UNDER MY
SUPERVISION AND THAT THE SAME ARE TRUE AND CORRECT TO THE
BEST OF MY KNOWLEDGE AND BELIEF.

REGISTERED LAND SURVEYOR
REGISTRATION NO. 17492
STATE OF COLORADO

REVISED: 08-28-12 J.M.H.

UINTAH ENGINEERING & LAND SURVEYING

85 SOUTH 200 EAST - VERNAL, UTAH 84078

(435) 789-1017

SCALE 1" = 1000'	DATE SURVEYED: 3-21-12	DATE DRAWN: 04-09-12
PARTY DARREN SHANKS K.H. B.D.H.	REFERENCES G.L.O. PLAT	
WEATHER COOL	FILE NOBLE ENERGY, INC.	

SITE SKETCH

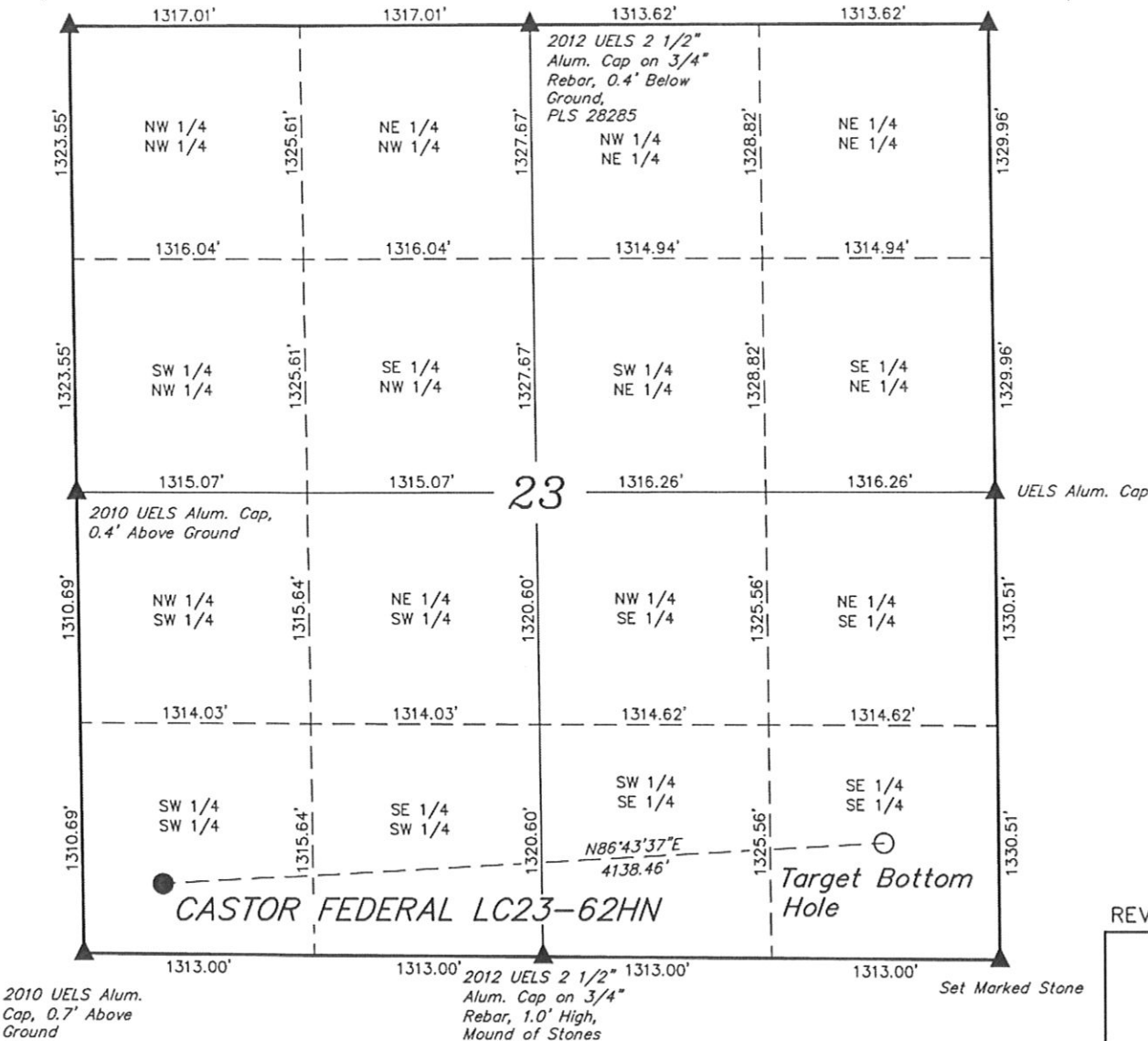
T9N, R59W, 6th P.M.

NOBLE ENERGY, INC.

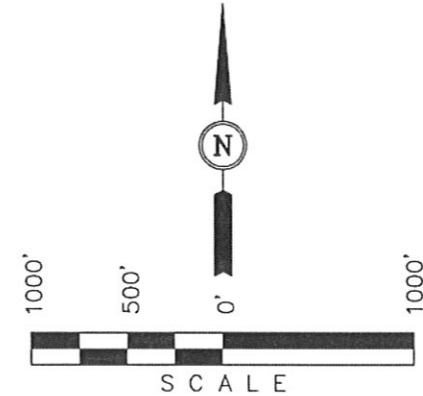
Well location, CASTOR FEDERAL LC23-62HN, located as shown in the SW 1/4 SW 1/4 of Section 23, T9N, R59W, 6th P.M., Weld County, Colorado.

Private Alum. Cap
LS #17492

UELS Alum. Cap



NO WELLS WITHIN SECTION



LEGEND:

- ▲ = SECTION CORNERS LOCATED.
- = PROPOSED WELL HEAD.
- = TARGET BOTTOM HOLE.

REVISED: 08-28-12 J.M.H.

UINTAH ENGINEERING & LAND SURVEYING
85 SOUTH 200 EAST - VERNAL, UTAH 84078
(435) 789-1017

SCALE 1" = 1000'	DATE SURVEYED: 3-21-12	DATE DRAWN: 04-09-12
PARTY DARREN SHANKS K.H. B.D.H.	REFERENCES G.L.O. PLAT	
WEATHER COOL	FILE NOBLE ENERGY, INC.	