

The Road to Excellence Starts with Safety

Sold To #: 300721	Ship To #: 2894857	Quote #:	Sales Order #: 9628686
Customer: WPX ENERGY ROCKY MOUNTAIN LLC-EBUS		Customer Rep: Moore, Frank	
Well Name: RWF	Well #: 312-32	API/UWI #:	
Field: RULISON	City (SAP): RIFLE	County/Parish: Garfield	State: Colorado
Lat: N 39.486 deg. OR N 39 deg. 29 min. 8.506 secs.		Long: W 107.916 deg. OR W -108 deg. 5 min. 2.663 secs.	
Contractor: CYCLONE 17	Rig/Platform Name/Num: CYCLONE 17		
Job Purpose: Cement Surface Casing			
Well Type: Development Well		Job Type: Cement Surface Casing	
Sales Person: MAYO, MARK		Srvc Supervisor: ARNOLD, EDWARD	MBU ID Emp #: 439784

Job Personnel

HES Emp Name	Exp Hrs	Emp #	HES Emp Name	Exp Hrs	Emp #	HES Emp Name	Exp Hrs	Emp #
ARNOLD, EDWARD John	6.5	439784	SINCLAIR, DAN J	6.5	338784	VANALSTYNE, TROY L	6.5	420256
WALPOLE, DARREN Livingston	6.5	485294						

Equipment

HES Unit #	Distance-1 way	HES Unit #	Distance-1 way	HES Unit #	Distance-1 way	HES Unit #	Distance-1 way
10867531	60 mile	10872429	60 mile	10989685	60 mile	11259882	60 mile
11808847	60 mile						

Job Hours

Date	On Location Hours	Operating Hours	Date	On Location Hours	Operating Hours	Date	On Location Hours	Operating Hours
7-14-2012	6.5	3						

TOTAL Total is the sum of each column separately

Job

Job Times

Formation Name	Date	Time	Time Zone
Formation Depth (MD) Top Bottom	Called Out	14 - Jul - 2012	07:30 MST
Form Type	On Location	14 - Jul - 2012	11:00 MST
Job depth MD 1176. ft Job Depth TVD 1176. ft	Job Started	14 - Jul - 2012	15:12 MST
Water Depth Wk Ht Above Floor 8. ft	Job Completed	14 - Jul - 2012	16:05 MST
Perforation Depth (MD) From To	Departed Loc	14 - Jul - 2012	17:20 MST

Well Data

Description	New / Used	Max pressure psig	Size in	ID in	Weight lbm/ft	Thread	Grade	Top MD ft	Bottom MD ft	Top TVD ft	Bottom TVD ft

Tools and Accessories

Type	Size	Qty	Make	Depth	Type	Size	Qty	Make	Depth	Type	Size	Qty	Make
Guide Shoe					Packer					Top Plug	9 5/8	1	HES
Float Shoe					Bridge Plug					Bottom Plug			
Float Collar					Retainer					SSR plug set			
Insert Float										Plug Container	9 5/8	1	HES
Stage Tool										Centralizers			

Miscellaneous Materials

Gelling Agt	Conc	Surfactant	Conc	Acid Type	Qty	Conc	%
Treatment Fld	Conc	Inhibitor	Conc	Sand Type	Size	Qty	

Fluid Data

Stage/Plug #: 1

Fluid #	Stage Type	Fluid Name	Qty	Qty uom	Mixing Density lbm/gal	Yield ft3/sk	Mix Fluid Gal/sk	Rate bbl/min	Total Mix Fluid Gal/sk

Stage/Plug #: 1

Fluid #	Stage Type	Fluid Name	Qty	Qty uom	Mixing Density lbm/gal	Yield ft3/sk	Mix Fluid Gal/sk	Rate bbl/min	Total Mix Fluid Gal/sk

Stage/Plug #: 1									
1	Fresh Water		20.00	bbl	8.33	.0	.0	4	
2	VersaCem Lead	VERSACEM (TM) SYSTEM (452010)	160.0	sacks	12.3	2.38	13.75	7	13.75
	13.75 Gal	FRESH WATER							
3	VersaCem Tail	VERSACEM (TM) SYSTEM (452010)	160.0	sacks	12.8	2.11	11.75	7	11.75
	11.75 Gal	FRESH WATER							
4	Displacement Fluid		87.00	bbl	8.34	.0	.0	8.5	
Calculated Values		Pressures			Volumes				
Displacement	87.7	Shut In: Instant		Lost Returns		Cement Slurry	127.9	Pad	
Top Of Cement	SURFACE	5 Min		Cement Returns	30	Actual Displacement	87.7	Treatment	
Frac Gradient		15 Min		Spacers	20	Load and Breakdown		Total Job	204.7
Rates									
Circulating	RIG	Mixing	7	Displacement	8.7	Avg. Job	7.5		
Cement Left In Pipe	Amount	44.65 ft	Reason	Shoe Joint					
Frac Ring # 1 @	ID	Frac ring # 2 @	ID	Frac Ring # 3 @	ID	Frac Ring # 4 @	ID		
The Information Stated Herein Is Correct				Customer Representative Signature					

The Road to Excellence Starts with Safety

Sold To #: 300721	Ship To #: 2894857	Quote #:	Sales Order #: 9628686
Customer: WPX ENERGY ROCKY MOUNTAIN LLC-EBUS		Customer Rep: Moore, Frank	
Well Name: RWF	Well #: 312-32	API/UWI #:	
Field: RULISON	City (SAP): RIFLE	County/Parish: Garfield	State: Colorado
Legal Description:			
Lat: N 39.486 deg. OR N 39 deg. 29 min. 8.506 secs.		Long: W 107.916 deg. OR W -108 deg. 5 min. 2.663 secs.	
Contractor: CYCLONE 17		Rig/Platform Name/Num: CYCLONE 17	
Job Purpose: Cement Surface Casing			Ticket Amount:
Well Type: Development Well		Job Type: Cement Surface Casing	
Sales Person: MAYO, MARK		Srvc Supervisor: ARNOLD, EDWARD	MBU ID Emp #: 439784

Activity Description	Date/Time	Cht #	Rate bbl/min	Volume bbl		Pressure psig		Comments
				Stage	Total	Tubing	Casing	
Call Out	07/14/2012 07:30							
Pre-Convoy Safety Meeting	07/14/2012 09:15							Including entire cement crew.
Crew Leave Yard	07/14/2012 09:30							
Arrive At Loc	07/14/2012 11:00							Rig pulling Drill Pipe
Assessment Of Location Safety Meeting	07/14/2012 11:05							Water; PH 7; KCL 0; So4 <200; Fe 0; Calcuim 120; Chlorides 500; Temp 80; TDS 190.
Pre-Rig Up Safety Meeting	07/14/2012 14:10							Including entire cement crew.
Rig-Up Equipment	07/14/2012 14:15							1 Elite # 7; 1 660 bulk truck; 1 hard line to floor; 1 line to upright; 1 line to rig tank. 9.625" compact head.
Rig-Up Completed	07/14/2012 14:45							
Pre-Job Safety Meeting	07/14/2012 14:50							Including everyone on location.
Start Job	07/14/2012 15:12							TD 1176; TP 1160; SJ 44.65; OH 13.5; Casing 9.625" 32.3# H-40; Mud 10.5 ppg.
Pump Water	07/14/2012 15:13		2	2			30.0	Fill lines with fresh water.
Test Lines	07/14/2012 15:16						3210.0	Good pressure test, no leaks.
Pump Spacer 1	07/14/2012 15:24		4	20			94.0	20 BBL fresh water spacer.
Pump Lead Cement	07/14/2012 15:27		7	67.8			250.0	160 sks Lead Cement, 12.3 ppg, 2.38 cf3, 13.75 gal/sk.

Sold To #: 300721

Ship To #: 2894857

Quote #:

Sales Order #:

9628686

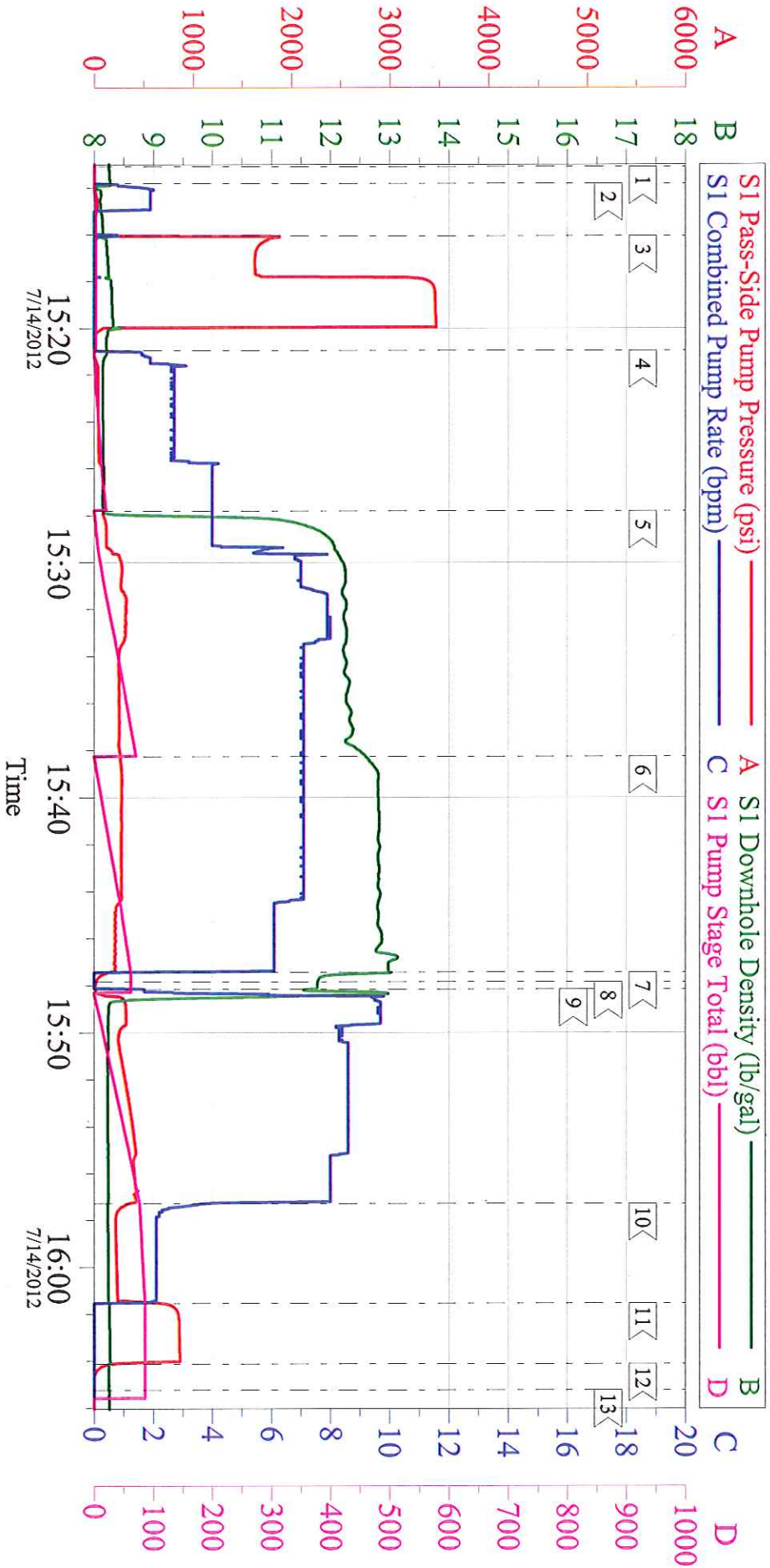
SUMMIT Version: 7.3.0030

Sunday, July 29, 2012 11:11:00

Activity Description	Date/Time	Cht #	Rate bbl/min	Volume bbl		Pressure psig		Comments
				Stage	Total	Tubing	Casing	
Pump Tail Cement	07/14/2012 15:38		7	60.1			276.0	160 sks Tail Cement, 12.8 ppg, 2.11 cf3, 11.75 gal/sk.
Shutdown	07/14/2012 15:47							
Drop Plug	07/14/2012 15:47							Plug left container.
Pump Displacement	07/14/2012 15:48		8.5	77.7			420.0	Fresh water displacement.
Slow Rate	07/14/2012 15:57		2	10			230.0	Slow rate 10 BBL's prior to bumping the plug.
Bump Plug	07/14/2012 16:01						850.0	Bumped plug, took 500 PSI over.
Check Floats	07/14/2012 16:04							Floats held, .5 BBL back. 30 BBL's of good cement to surface.
End Job	07/14/2012 16:05							
Pre-Rig Down Safety Meeting	07/14/2012 16:10							Including entire cement crew.
Rig-Down Equipment	07/14/2012 16:15							
Rig-Down Completed	07/14/2012 17:00							
Pre-Convoy Safety Meeting	07/14/2012 17:15							Including entire cement crew.
Crew Leave Location	07/14/2012 17:20							Crew leave location for Service Center or another location.
Other	07/14/2012 17:20							Thank You for using Halliburton. Ed Arnold and Crew.

WPX - RWF 312-32

9 5/8" SURFACE



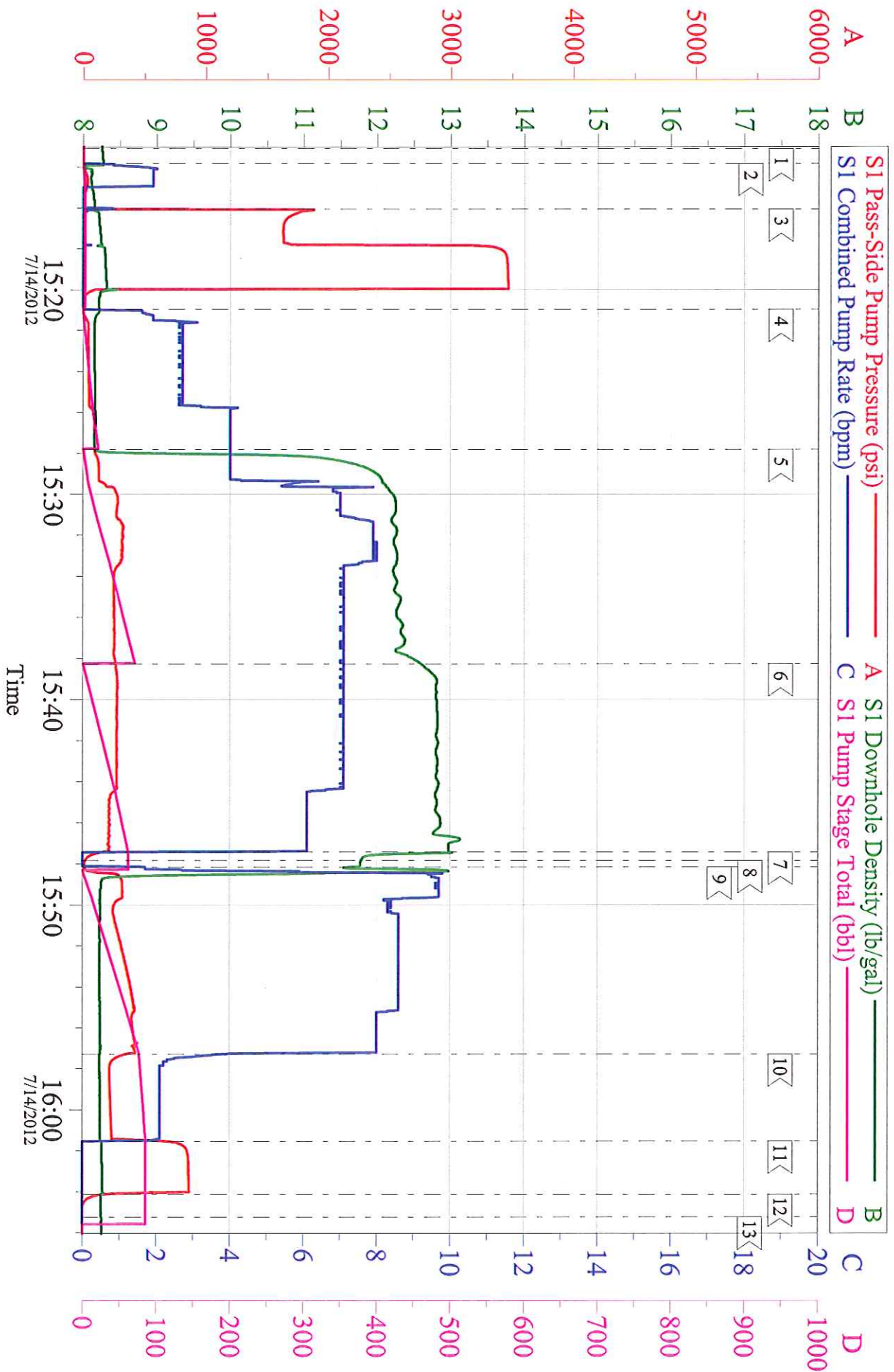
Local Event Log

1	START JOB	15:13:06	2	FILL LINES	15:13:49	3	TEST LINES	15:16:03
4	H2O SPACER	15:20:57	5	LEAD CEMENT	15:27:48	6	TAIL CEMENT	15:38:15
7	SHUT DOWN	15:47:26	8	DROP PLUG	15:47:50	9	H2O DISPLACEMENT	15:48:09
10	SLOW RATE	15:57:17	11	BUMP PLUG	16:01:32	12	CHECK FLOATS	16:04:08
13	END JOB	16:05:15						

Customer:	WPX	Job Date:	14-Jul-2012	Sales Order #:	9628686
Well Description:	RWF 312-32	Job Type:	SURFACE	ADC Used:	YES
Company Rep:	FRANK MORRE	Cement Supervisor:	ED ARNOLD	Elite #7:	DAN SINCLAIR

WPX - RWF 312-32

9 5/8" SURFACE



Customer: WPX
 Well Description: RWF 312-32
 Company Rep: FRANK MORRE

Job Date: 14-Jul-2012
 Job Type: SURFACE
 Cement Supervisor: ED ARNOLD

Sales Order #: 9628686
 ADC Used: YES
 Elite #7: DAN SINCLAIR