

T12S, R94W, 6th P.M.

1908 Brass Cap
0.4' High, E/W Fence
Lat: 39.002581°
Long: 107.854367°

S89°52'W - 2633.40' (G.L.O.)

S89°47'01"W - 2635.17' (Meas.)

Well location, SPU COCKROFT 1294 #23-41DH1R (AS-DRILLED SURFACE LOCATION), located as shown in Tract 45 of Section 23, T12S, R94W, 6th P.M., Delta County, Colorado.

BASIS OF ELEVATION

SPOT ELEVATION (CEDAR) LOCATED IN THE NE 1/4 OF SECTION 34, T13S, R94W, 6th P.M. TAKEN FROM NATIONAL GEODETIC SURVEY DATA. SAID ELEVATION IS REPORTED AS BEING 6466 FEET.

BASIS OF BEARINGS

BASIS OF BEARINGS IS A G.P.S. OBSERVATION.

N00°09'E - 5280.00' (G.L.O.)

Tract 44

Tract 45

Tract 46

Tract 47

Tract 48

Tract 49

Tract 50

Tract 51

Tract 52

Tract 53

Tract 54

Tract 55

Tract 56

Tract 57

Tract 58

Tract 59

Tract 60

Tract 61

Tract 62

Tract 63

Tract 64

Tract 65

Tract 66

Tract 67

Tract 68

Tract 69

Tract 70

Tract 71

Tract 72

Tract 73

Tract 74

Tract 75

Tract 76

Tract 77

Tract 78

Tract 79

Tract 80

Tract 81

Tract 82

Tract 83

Tract 84

Tract 85

Tract 86

Tract 87

Tract 88

Tract 89

Tract 90

Tract 91

Tract 92

Tract 93

Tract 94

Tract 95

Tract 96

Tract 97

Tract 98

Tract 99

Tract 100

Tract 101

Tract 102

Tract 103

Tract 104

Tract 105

Tract 106

Tract 107

Tract 108

Tract 109

Tract 110

Tract 111

Tract 112

Tract 113

Tract 114

Tract 115

Tract 116

Tract 117

Tract 118

Tract 119

Tract 120

Tract 121

Tract 122

Tract 123

Tract 124

Tract 125

Tract 126

Tract 127

Tract 128

Tract 129

Tract 130

Tract 131

Tract 132

Tract 133

Tract 134

Tract 135

Tract 136

Tract 137

Tract 138

Tract 139

Tract 140

Tract 141

Tract 142

Tract 143

Tract 144

Tract 145

Tract 146

Tract 147

Tract 148

Tract 149

Tract 150

Tract 151

Tract 152

Tract 153

Tract 154

Tract 155

Tract 156

Tract 157

Tract 158

Tract 159

Tract 160

Tract 161

Tract 162

Tract 163

Tract 164

Tract 165

Tract 166

Tract 167

Tract 168

Tract 169

Tract 170

Tract 171

Tract 172

Tract 173

Tract 174

Tract 175

Tract 176

Tract 177

Tract 178

Tract 179

Tract 180

Tract 181

Tract 182

Tract 183

Tract 184

Tract 185

Tract 186

Tract 187

Tract 188

Tract 189

Tract 190

Tract 191

Tract 192

Tract 193

Tract 194

Tract 195

Tract 196

Tract 197

Tract 198

Tract 199

Tract 200

Tract 201

Tract 202

Tract 203

Tract 204

Tract 205

Tract 206

Tract 207

Tract 208

Tract 209

Tract 210

Tract 211

Tract 212

Tract 213

Tract 214

Tract 215

Tract 216

Tract 217

Tract 218

Tract 219

Tract 220

Tract 221

Tract 222

Tract 223

Tract 224

Tract 225

Tract 226

Tract 227

Tract 228

Tract 229

Tract 230

Tract 231

Tract 232

Tract 233

Tract 234

Tract 235

Tract 236

Tract 237

Tract 238

Tract 239

Tract 240

Tract 241

Tract 242

Tract 243

Tract 244

Tract 245

Tract 246

Tract 247

Tract 248

Tract 249

Tract 250

Tract 251

Tract 252

Tract 253

Tract 254

Tract 255

Tract 256

Tract 257

Tract 258

Tract 259

Tract 260

Tract 261

Tract 262

Tract 263

Tract 264

Tract 265

Tract 266

Tract 267

Tract 268

Tract 269

Tract 270

Tract 271

Tract 272

Tract 273

Tract 274

Tract 275

Tract 276

Tract 277

Tract 278

Tract 279

Tract 280

Tract 281

Tract 282

Tract 283

Tract 284

Tract 285

Tract 286

Tract 287

Tract 288

Tract 289

Tract 290

Tract 291

Tract 292

Tract 293

Tract 294

Tract 295

Tract 296

Tract 297

Tract 298

Tract 299

Tract 300

Tract 301

Tract 302

Tract 303

Tract 304

Tract 305

Tract 306

Tract 307

Tract 308

Tract 309

Tract 310

Tract 311

Tract 312

Tract 313

Tract 314

Tract 315

Tract 316

Tract 317

Tract 318

Tract 319

Tract 320

Tract 321

Tract 322

Tract 323

Tract 324

Tract 325

Tract 326

Tract 327

Tract 328

Tract 329

Tract 330

Tract 331

Tract 332

Tract 333

Tract 334

Tract 335

Tract 336

Tract 337

Tract 338

Tract 339

Tract 340

Tract 341

Tract 342

Tract 343

Tract 344

Tract 345

T12S, R94W, 6th P.M.

NE Cor. Sec. 13
1908 Brass Cap
Lat: 39.017061°
Long: 107.835725°

1908 Brass Cap
0.4' High, E/W Fence
Lat: 39.002581°
Long: 107.854367°

N89°54'54"W - 2638.77' (Meas.)

N89°58'56"W - 2642.76' (Meas.)

N00°10'00"E - 5283.64' (Meas.)

1908 Brass Cap
Lat: 39.002567°
Long: 107.845086°

Section Corner
Re-Established
Using Single
Proportion Method
(Not Set on Ground)

Tract 47

NOTE:
THE PROPOSED TARGET BOTTOM HOLE FOR
THIS WELL BEARS S53°42'14"E 5506.13' FROM
THE (AS-DRILLED) WELL HEAD WHICH IS
LOCATED IN TRACT 45 OF SECTION 23, T12S,
R94W, 6th P.M. AT 1184' FNL 1275' FEL.

Tract 49

N00°10'00"E - 2641.82' (Meas.)

1908 Brass Cap
0.2' High, YPC Rebar
Lat: 38.995311°
Long: 107.835822°

N00°09'00"E - 2639.73' (Meas.)

1908 Brass Cap
0.4' High, T-Post
Lat: 38.995336°
Long: 107.854394°

Tract 48

S53°42'14"E
5506.13'

N00°07'30"E - 2640.19' (Meas.)

Tract 51

Tract 50

1908 Brass Cap
Flush w/ Ground,
Rebar YPC
Lat: 38.988089°
Long: 107.854419°

1908 Brass Cap
Flush w/ Ground,
Rebar (2)
Lat: 38.988086°
Long: 107.843142°

SPU COCKROFT
1294 #23-41DH1R
TARGET BOTTOM HOLE

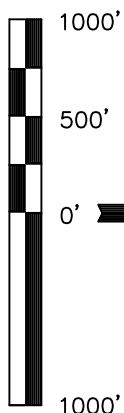
N89°58'50"W - 2641.60' (Meas.)

1908 Brass Cap
Lat: 38.988081°
Long: 107.835853°

REVISED: 10-17-12 T.B.
REVISED: 09-13-12 S.L.

THIS IS TO CERTIFY THAT THE ABOVE PLAT WAS PREPARED FROM
FIELD NOTES OF ACTUAL SURVEYS MADE BY ME OR UNDER MY
SUPERVISION AND THAT THE SAME ARE TRUE AND CORRECT TO THE
BEST OF MY KNOWLEDGE AND BELIEF.

REGISTERED LAND SURVEYOR
REGISTRATION NO. 12492
STATE OF COLORADO
10-17-12



S C A L E



BASIS OF BEARINGS

BASIS OF BEARINGS IS A G.P.S. OBSERVATION.

BASIS OF ELEVATION

SPOT ELEVATION (CEDAR) LOCATED IN THE NE 1/4 OF
SECTION 34, T13S, R94W, 6th P.M. TAKEN FROM
NATIONAL GEODETIC SURVEY DATA. SAID ELEVATION IS
REPORTED AS BEING 6466 FEET.

GUNNISON ENERGY CORPORATION

Well location, SPU COCKROFT 1294 #23-41DH1R
(TARGET BOTTOM HOLE), located as shown in Lot
21 of Section 24, T12S, R94W, 6th P.M., Delta
County, Colorado.

LEGEND:

- 90° SYMBOL
- PROPOSED WELL HEAD.
- SECTION CORNERS LOCATED.

NAD 83 (TARGET BOTTOM HOLE)	
LATITUDE = 38°59'25.33" (38.990369)	
LONGITUDE = 107°50'35.74" (107.843261)	
NAD 27 (TARGET BOTTOM HOLE)	
LATITUDE = 38°59'25.40" (38.990389)	
LONGITUDE = 107°50'33.51" (107.842642)	
UTM NAD 27 ZONE 13-U.S. SURVEY FEET	
N: 14171056.51 E: 832641.79	

SCALE		DATE SURVEYED:	DATE DRAWN:
1" = 1000'		11-17-09	04-16-12
PARTY	REFERENCES		
B.H. G.O. S.L.	G.L.O. PLAT		
WEATHER	FILE		
COLD	GUNNISON ENERGY CORPORATION		

UTIAH ENGINEERING & LAND SURVEYING
85 SOUTH 200 EAST - VERNAL, UTAH 84078
(435) 789-1017

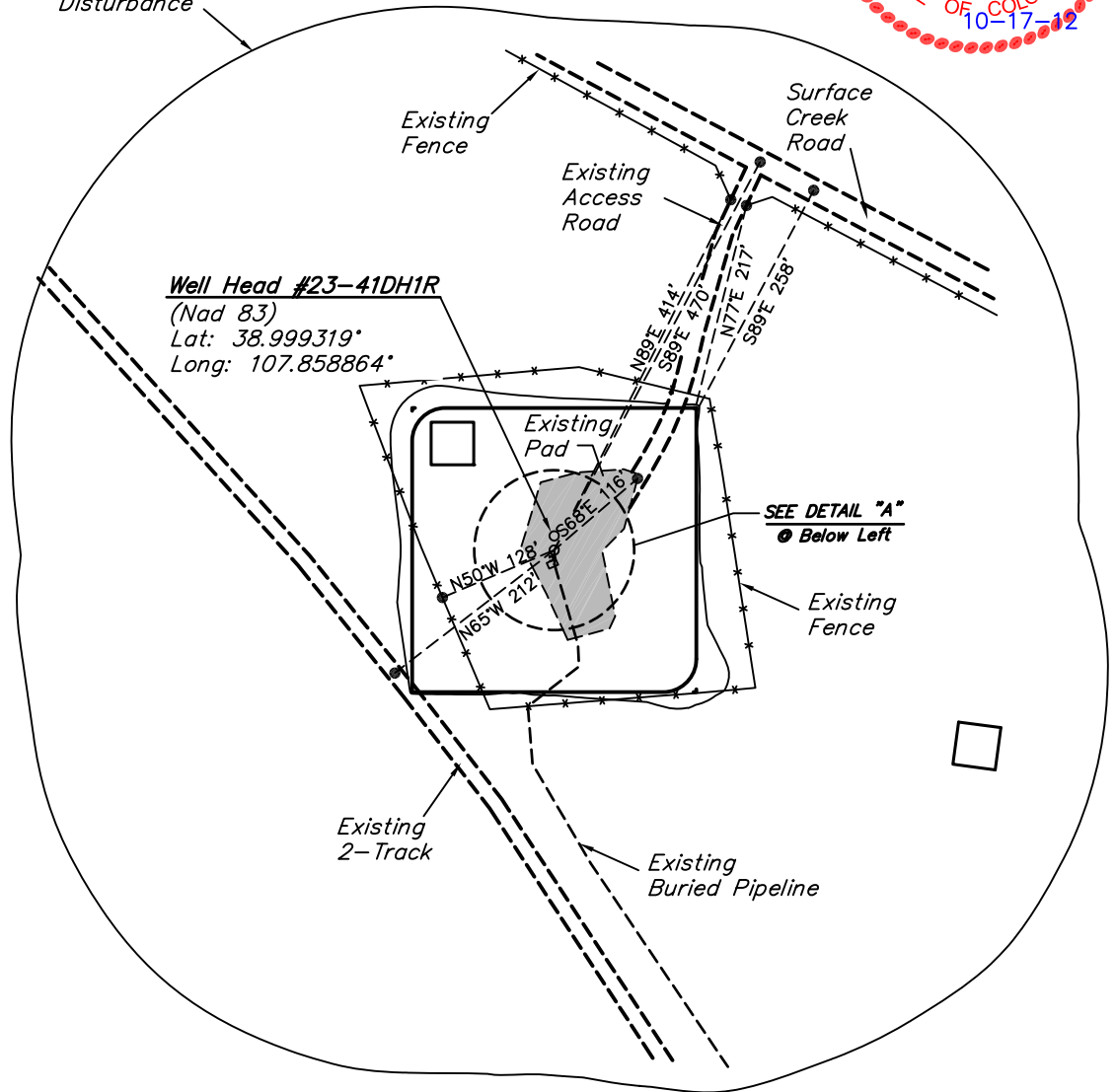
GUNNISON ENERGY CORPORATION

ADDENDUM TO LEGAL PLAT FOR
SPU COCKROFT 1294 #23-41DH1R
SECTION 23, T12S, R94W, 6th P.M.
1184' FNL 1275' FEL

SCALE: 1" = 200'
DATE: 12-03-09
DRAWN BY: C.H.
REV: 04-16-12 S.L.
REV: 10-17-12 T.B.

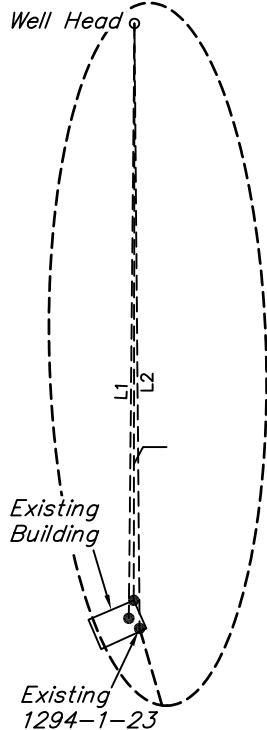


400' Offset
from Edge of
Disturbance



DETAIL "A"

No Scale



LINE TABLE		
LINE	DIRECTION	LENGTH
L1	S53°W	10'
L2	S62°W	15'
L3	S59°W	17'

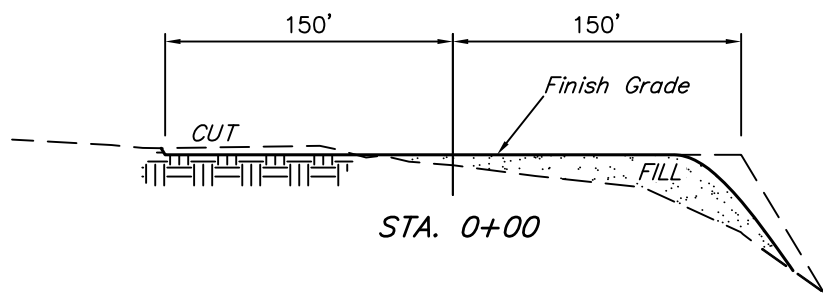
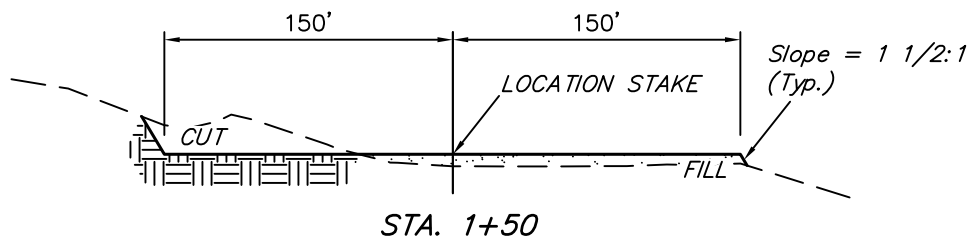
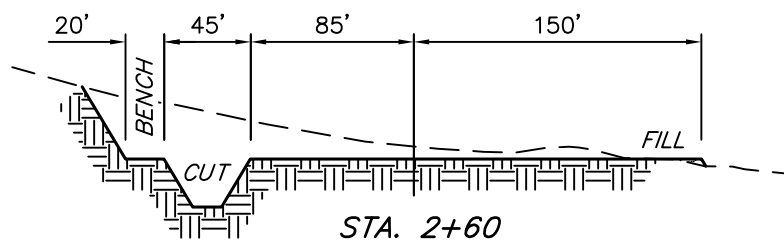
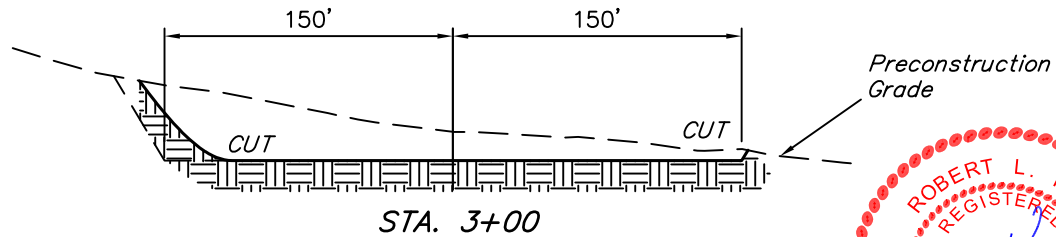
REV: 10-17-12 T.B.



GUNNISON ENERGY CORPORATION
CONSTRUCTION LAYOUT TYPICAL CROSS SECTION FOR
SPU COCKROFT 1294 #23-41DH1R
SECTION 23, T12S, R94W, 6th P.M.
1184' FNL 1275' FEL

X-Section
Scale
1" = 100'

DATE: 12-03-09
 DRAWN BY: C.H.
 REV: 04-16-12 S.L.
 REV: 10-17-12 T.B.



APPROXIMATE ACREAGES
 NEW DISTURBANCE = ± 2.042 ACRES
 EXISTING DISTURBANCE = ± 0.324 ACRES
 TOTAL = ± 2.366 ACRES

* NOTE:
 FILL QUANTITY INCLUDES
 5% FOR COMPACTION

APPROXIMATE YARDAGES

(6") Topsoil Stripping = 1,400 Cu. Yds.
 (New Construction Only)
 Remaining Location = 9,350 Cu. Yds.
TOTAL CUT = 10,750 CU.YDS.
FILL = 6,220 CU.YDS.

EXCESS MATERIAL = 4,350 Cu. Yds.
 Topsoil = 1,400 Cu. Yds.

EXCESS UNBALANCE = 3,130 Cu. Yds.
 (After Interim Rehabilitation)

UINTAH ENGINEERING & LAND SURVEYING
 85 So. 200 East * Vernal, Utah 84078 * (435) 789-1017

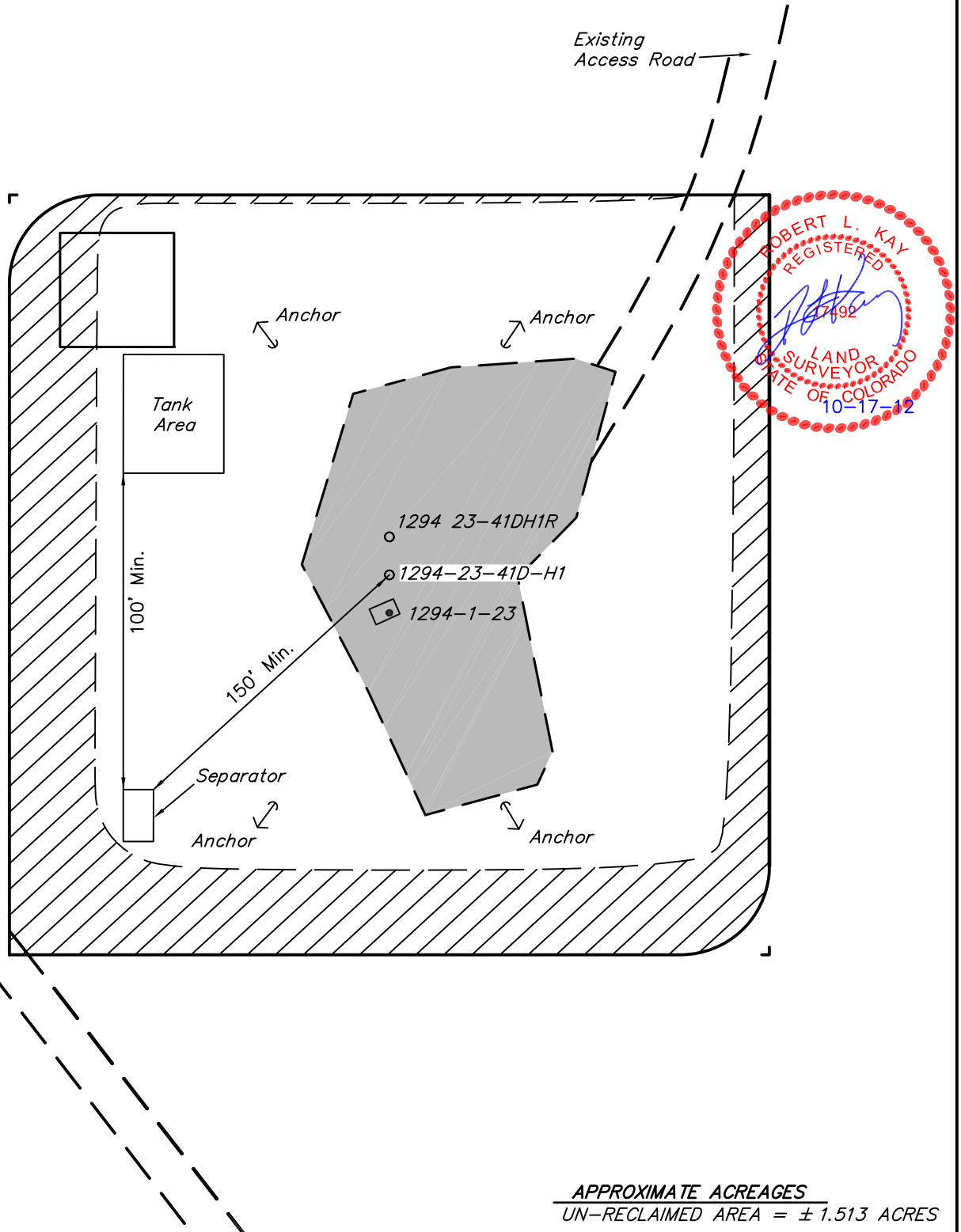
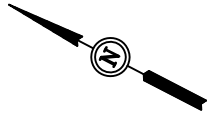
GUNNISON ENERGY CORPORATION

RECLAMATION DIAGRAM FOR

SPU COCKROFT 1294 #23-41DH1R
SECTION 23, T12S, R94W, 6th P.M.
1184' FNL 1275' FEL

FIGURE #4

SCALE: 1" = 60'
DATE: 12-03-09
DRAWN BY: C.H.
REV: 04-16-12 S.L.
REV: 10-17-12 T.B.



APPROXIMATE ACREAGES
UN-RECLAIMED AREA = ± 1.513 ACRES

RE-HABBED AREA

UINTAH ENGINEERING & LAND SURVEYING
85 So. 200 East * Vernal, Utah 84078 * (435) 789-1017

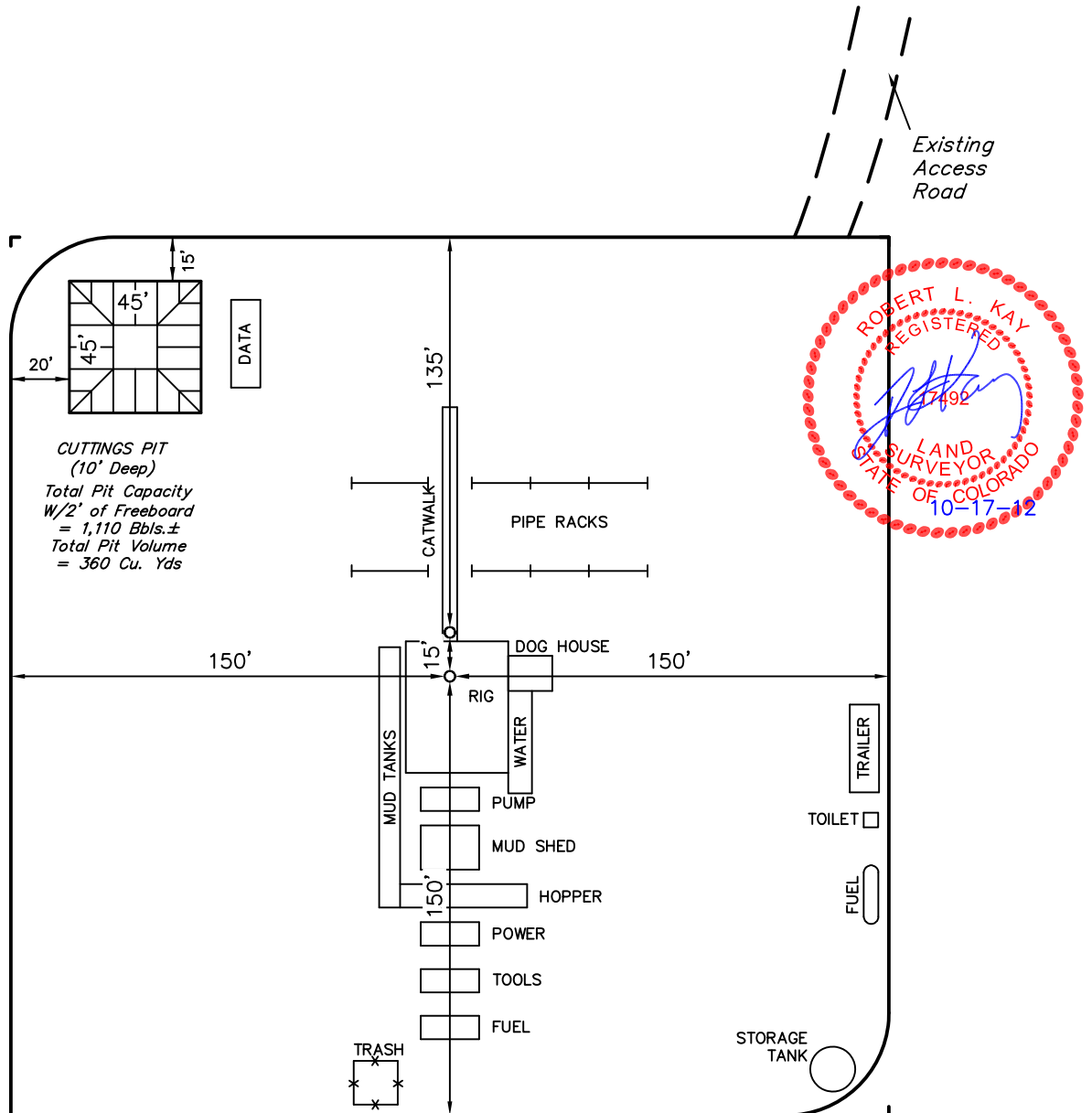
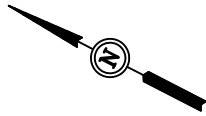
GUNNISON ENERGY CORPORATION

TYPICAL RIG LAYOUT FOR

SPU COCKROFT 1294 #23-41DH1R
SECTION 23, T12S, R94W, 6th P.M.
1184' FNL 1275' FEL

FIGURE #3

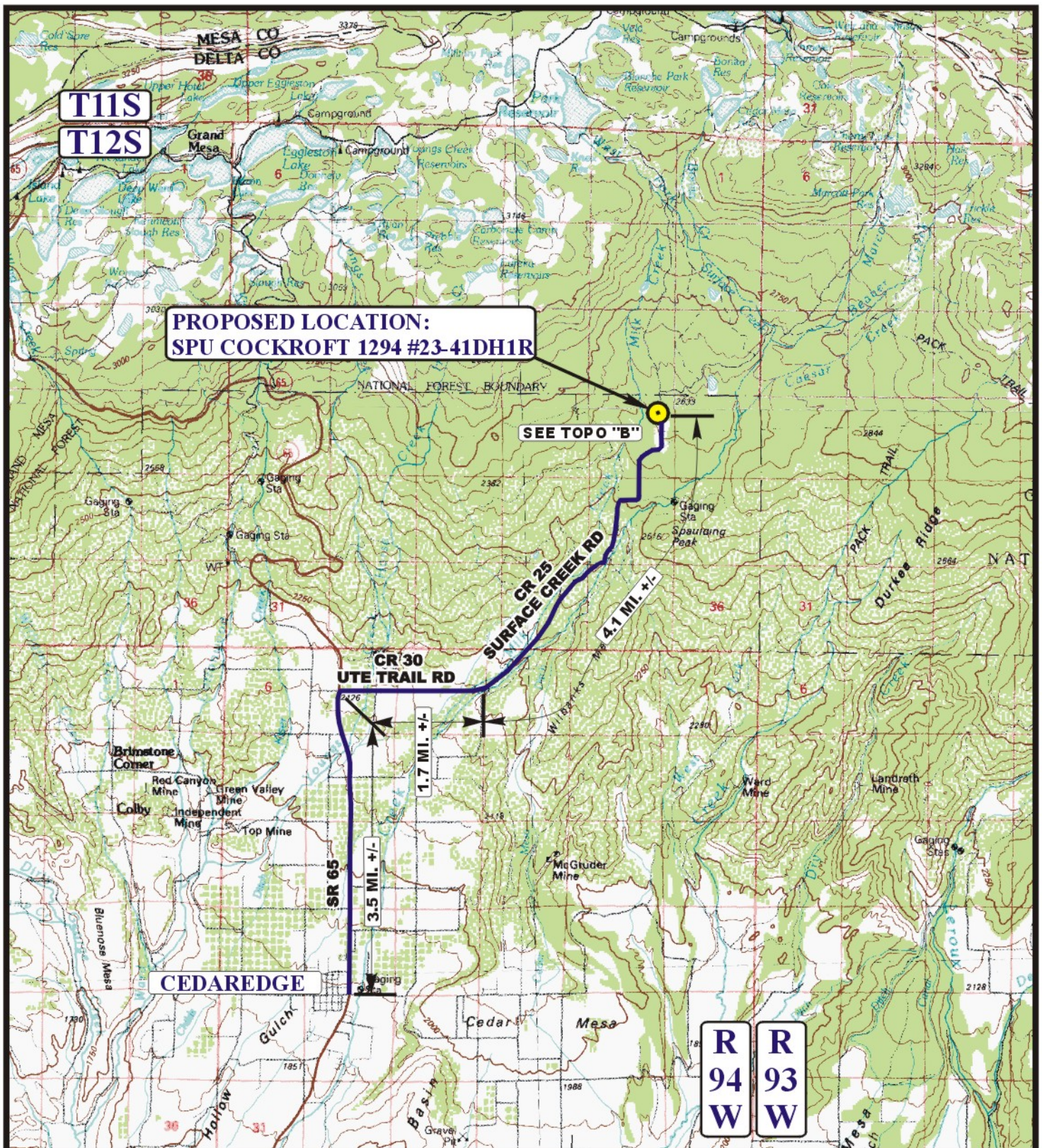
SCALE: 1" = 60'
DATE: 12-03-09
DRAWN BY: C.H.
REV: 04-16-12 S.L.
REV: 10-17-12 T.B.



GUNNISON ENERGY CORPORATION
SPU COCKROFT 1294 #23-41DH1R
SECTION 18, T12S, R89W, 6th P.M.

PROCEED IN A NORTHERLY DIRECTION FROM CEDAREGE, COLORADO ALONG SR 65 APPROXIMATELY 3.5 MILES TO THE JUNCTION OF THIS ROAD AND CR 30 TO THE EAST; TURN RIGHT AND PROCEED IN AN EASTERLY DIRECTION APPROXIMATELY 1.7 MILES TO THE JUNCTION OF THIS ROAD AND CR 25 TO THE NORTHEAST; TURN LEFT AND PROCEED IN A NORTHEASTERLY DIRECTION APPROXIMATELY 4.1 MILES TO THE JUNCTION OF THIS ROAD AND AN EXISTING ROAD TO THE WEST; TURN LEFT AND PROCEED IN A WESTERLY DIRECTION APPROXIMATELY 250' TO THE PROPOSED LOCATION.

TOTAL DISTANCE FROM CEDAREGE, COLORADO TO THE PROPOSED LOCATION IS APPROXIMATELY 9.3 MILES.



LEGEND:

PROPOSED LOCATION



GUNNISON ENERGY CORPORATION

SPU COCKROFT 1294 #23-41DH1R
SECTION 23, T12S, R94W, 6th P.M.
1184' FNL 1275' FEL



Utah Engineering & Land Surveying
85 South 200 East Vernal, Utah 84078
(435) 789-1017 * FAX (435) 789-1813

ACCESS ROAD
MAP

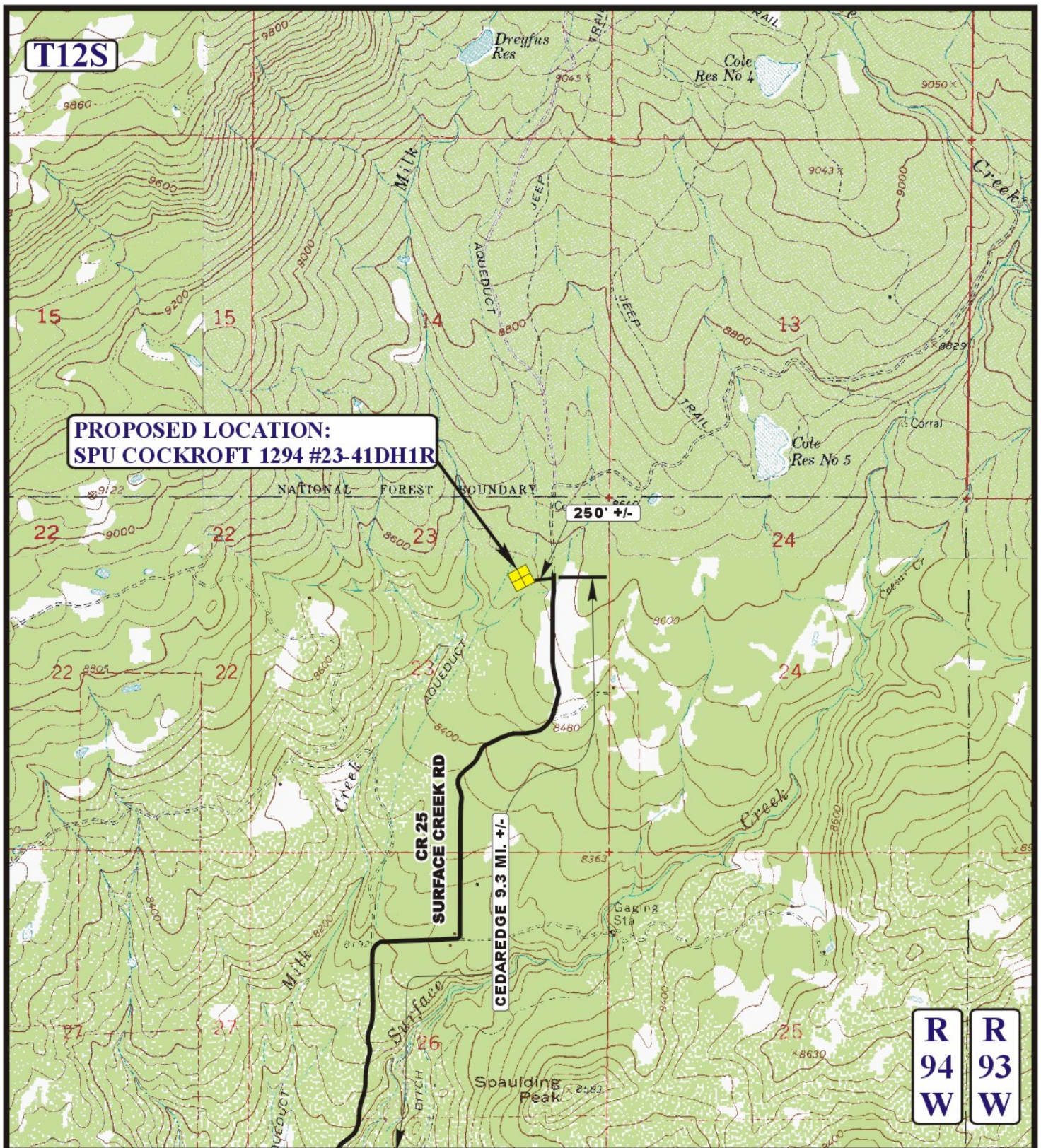
12 03 09
MONTH DAY YEAR

SCALE: 1:100,000

DRAWN BY: J.H.

REV: 10-17-12 M.B.





LEGEND:

EXISTING ROAD



GUNNISON ENERGY CORPORATION

SPU COCKROFT 1294 #23-41DH1R
SECTION 23, T12S, R94W, 6th P.M.
1184' FNL 1275' FEL



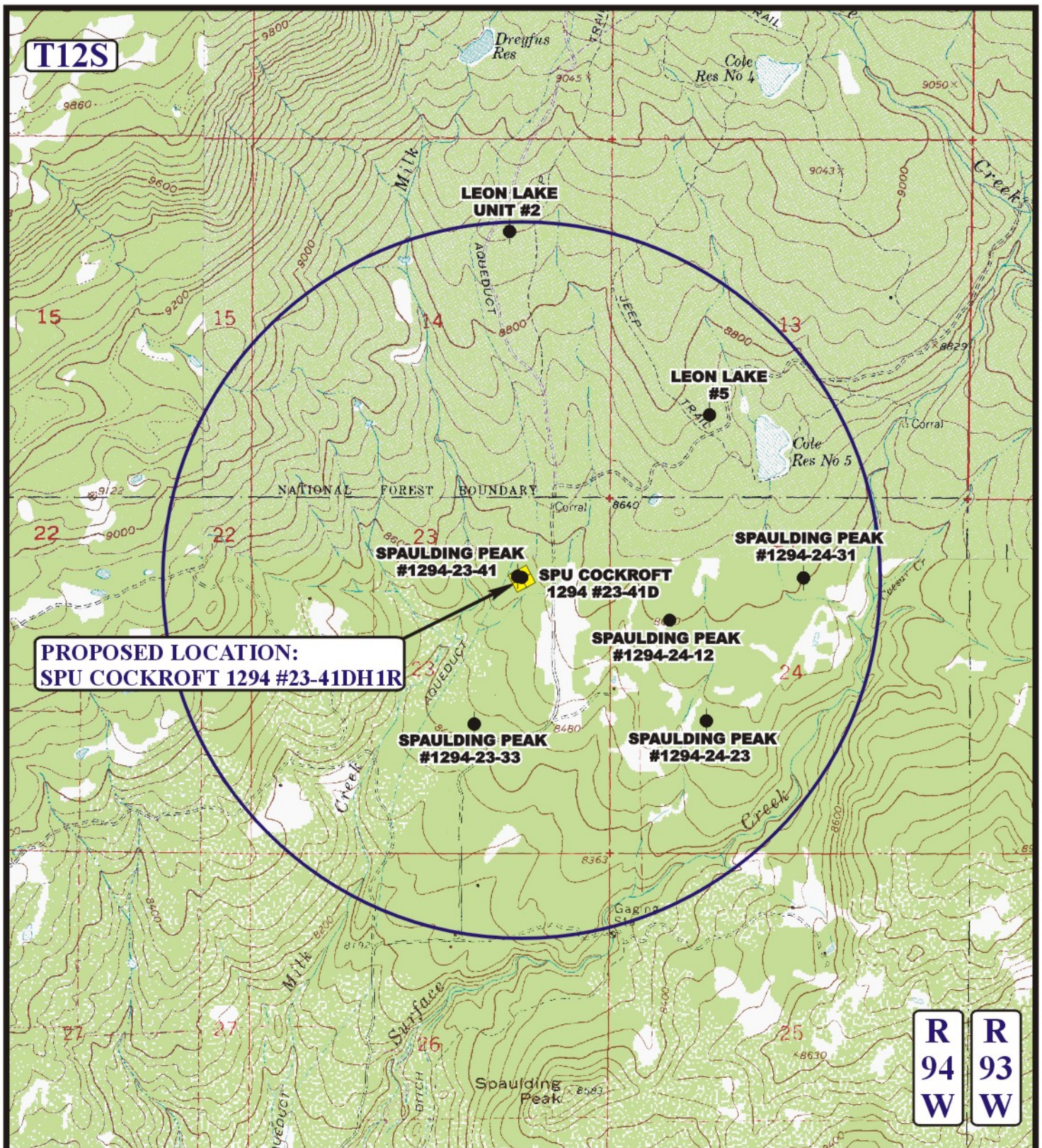
Uintah Engineering & Land Surveying
85 South 200 East Vernal, Utah 84078
(435) 789-1017 * FAX (435) 789-1813

**ACCESS ROAD
MAP**

12 03 09
 MONTH DAY YEAR

**B
TOPO**

SCALE: 1" = 2000' DRAWN BY: J.H. REV: 10-17-12 M.B.



LEGEND:

- DISPOSAL WELLS
- PRODUCING WELLS
- SHUT IN WELLS
- ABANDONED WELLS
- TEMPORARILY ABANDONED



Utah Engineering & Land Surveying
85 South 200 East Vernal, Utah 84078
(435) 789-1017 * FAX (435) 789-1813



GUNNISON ENERGY CORPORATION

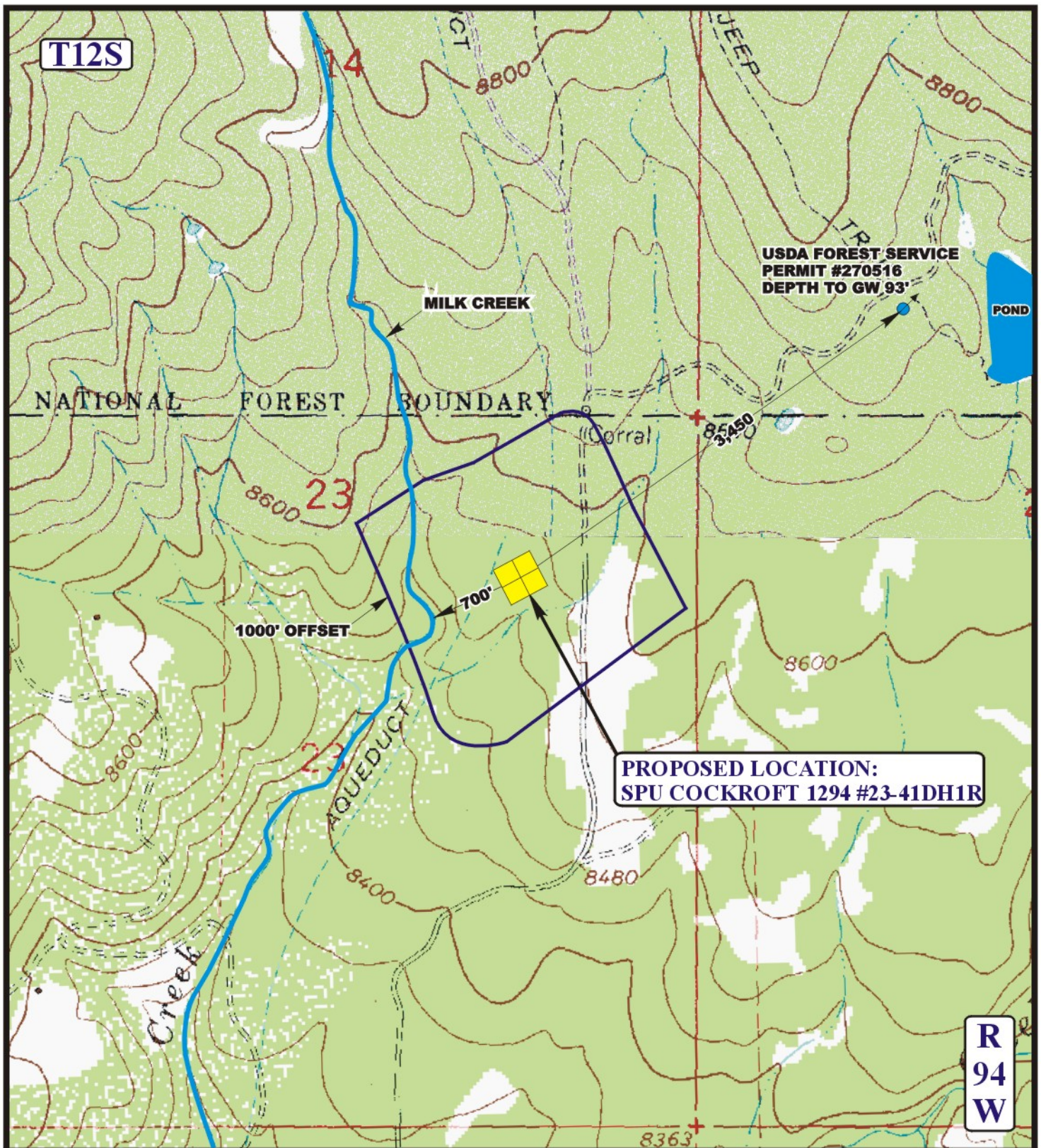
SPU COCKROFT 1294 #23-41DH1R
SECTION 23, T12S, R94W, 6th P.M.
1184' FNL 1275' FEL

TOPOGRAPHIC
MAP

12 03 09
MONTH DAY YEAR

SCALE: 1" = 2000' DRAWN BY: J.H. REV: 10-17-12 M.B.





LEGEND:

- EXISTING DRAINAGE
- 1000' OFFSET BOUNDARY
- WATER WELL



Utah Engineering & Land Surveying
85 South 200 East Vernal, Utah 84078
(435) 789-1017 * FAX (435) 789-1813



GUNNISON ENERGY CORPORATION

SPU COCKROFT 1294 #23-41DH1R
SECTION 23, T12S, R94W, 6th P.M.
1184' FNL 1275' FEL

**HYDROLOGY
MAP**

01 07 10
MONTH DAY YEAR

SCALE: 1" = 1000' DRAWN BY: J.H. REV: 10-17-12 M.B.

**W
TOPO**