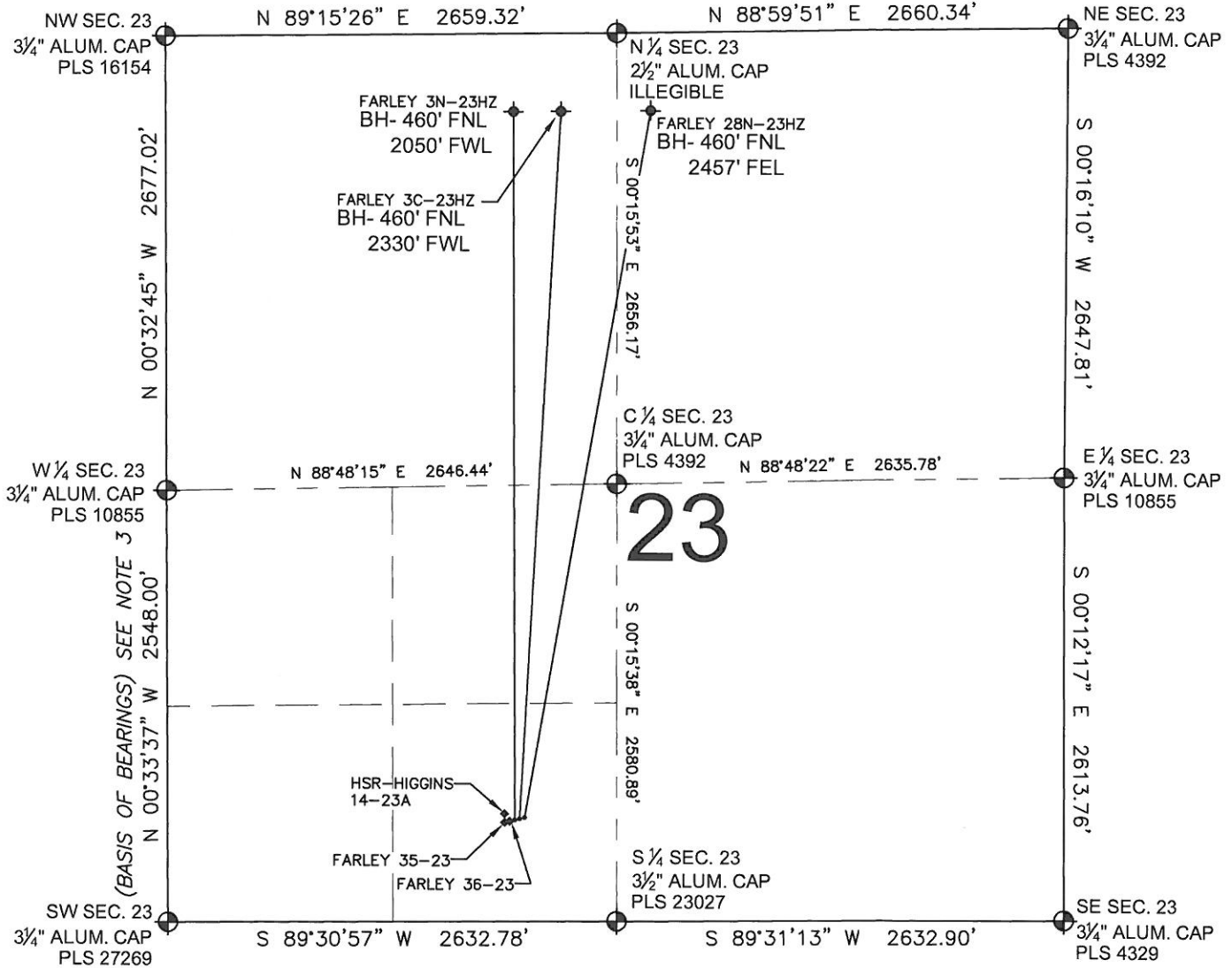


FARLEY 3N-23HZ MULTI-WELL PLAN

SECTION 23, TOWNSHIP 3 NORTH, RANGE 66 WEST, 6TH P.M.



LEGEND

- ⊕ = EXISTING MONUMENT ◆ = BOTTOM HOLE
- = PROPOSED WELL ♦ = EXISTING WELL
- BH= BOTTOM HOLE

NOTES:

- FARLEY 3N-23HZ TO BE AT 598' FSL, 2037' FWL.
- BOTTOM HOLE AT 460' FNL & 2050' FWL.
- FARLEY 3C-23HZ TO BE AT 605' FSL, 2066' FWL.
- BOTTOM HOLE AT 460' FNL & 2330' FWL.
- FARLEY 28N-23HZ TO BE AT 613' FSL, 2095' FWL.
- BOTTOM HOLE AT 460' FNL & 2457' FEL.
- HSR-HIGGINS 14-23A IS 634' FSL, 1978' FWL.
- FARLEY 35-23 IS 583' FSL, 1979' FWL.
- FARLEY 36-23 IS 590' FSL, 2008' FWL.

NOTES:

1. THIS FIELD SURVEY CONFORMS TO THE MINIMUM STANDARDS SET BY THE C.O.G.C.C., RULE NO. 215
2. HORIZONTAL POSITIONS AND ORTHOMETRIC ELEVATIONS SHOWN AT THE WELL HEAD, ARE BASED ON GPS-RTK POSITIONS DERIVED FROM MINIMUM 2-HOUR STATIC OBSERVATIONS CORRECTED BY THE NATIONAL GEODETIC SURVEY ONLINE POSITIONING USER SERVICE, O.P.U.S. DATUM: HORIZONTAL = NAD83/2007, VERTICAL = NAVD88
3. THE BASIS OF BEARINGS ARE STATE PLANE COORDINATE SYSTEM GRID BEARINGS SHOWN HEREON BETWEEN THE DESCRIBED THE MONUMENTS SHOWN HEREON.
4. GRID DISTANCES ARE SHOWN, AS MEASURED IN THE FIELD, WITH TIES TO WELLS MEASURED PERPENDICULAR TO SECTION LINES.

PREPARED BY:



PFS
Petroleum Field Services, LLC
1801 W. 13th Ave.
Denver, CO 80204

KERR-MCGEE OIL & GAS ONSHORE LP

FIELD DATE: 05-17-12	PAD NAME: FARLEY 3 PAD SESW
DRAWING DATE: 05-29-12	SURFACE LOCATION: WELD COUNTY, COLORADO
BY: SMF	CHECK: DA
SE 1/4 SW 1/4, SEC. 23, T3N, R66W, 6TH P.M.	

