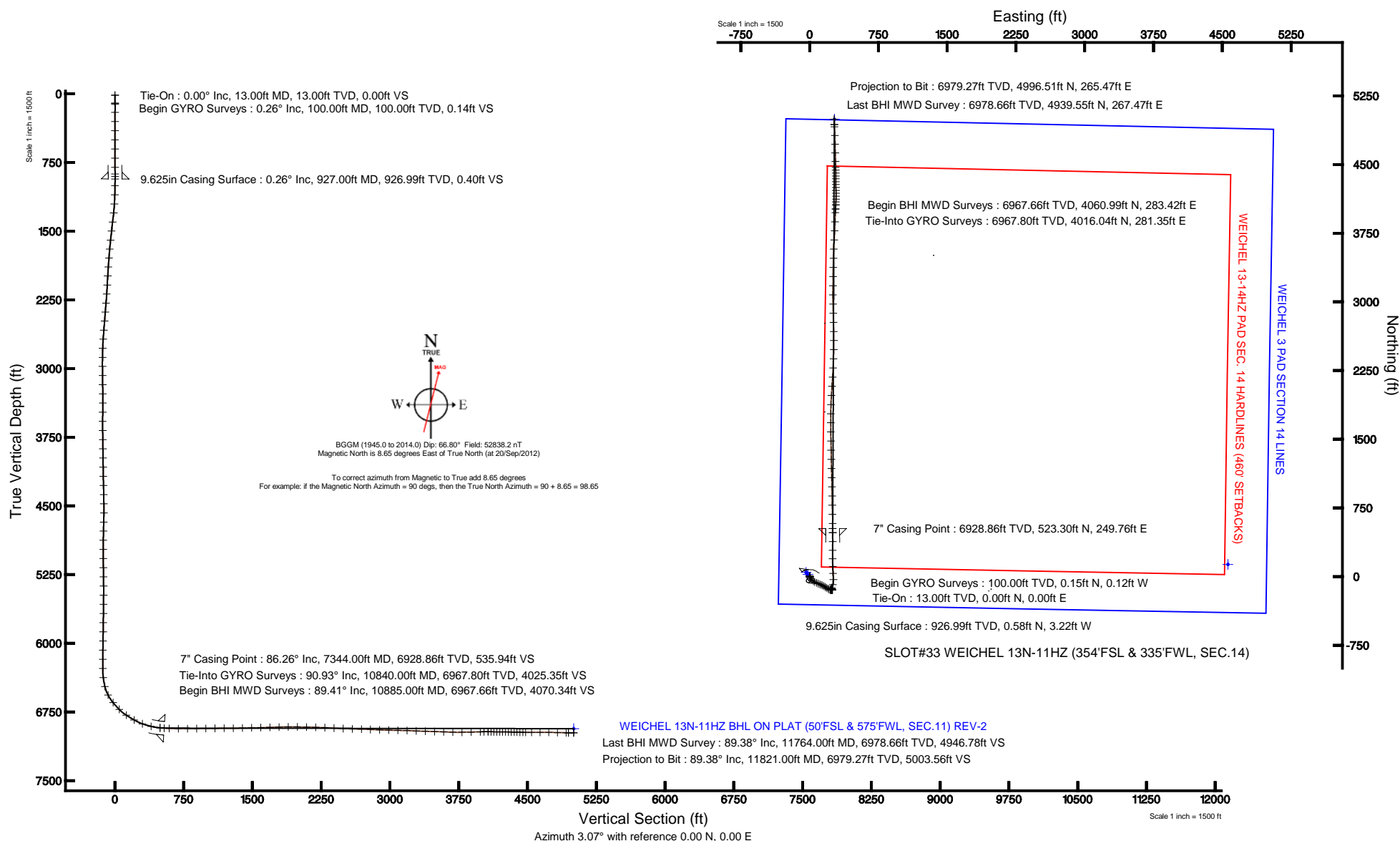


# KERR-MCGEE OIL & GAS ONSHORE LP

Location: COLORADO Slot: SLOT#33 WEICHEL 13N-11HZ (354'FSL & 335'FWL, SEC.14)  
 Field: WELD COUNTY (KERR MCGEE) Well: WEICHEL 13N-11HZ  
 Facility: SEC.14-T2N-R65W Wellbore: WEICHEL 13N-11HZ PWB

Plot reference wellpath is WEICHEL 13N-11HZ (REV-C.0) PWP

True vertical depths are referenced to ENSIGN 145 (RKB)	Grid System: NAD83 / Lambert Colorado SP, Northern Zone (501), US feet
Measured depths are referenced to ENSIGN 145 (RKB)	North Reference: True north
ENSIGN 145 (RKB) to Mean Sea Level: 4906 feet	Scale: True distance
Mean Sea Level to Mud line (At Slot: SLOT#33 WEICHEL 13N-11HZ (354'FSL & 335'FWL, SEC.14)): 0 feet	Depths are in feet
Coordinates are in feet referenced to Slot	Created by: augunora on 04/Oct/2012





# Actual Wellpath Report

WEICHEL 13N-11HZ AWP

Page 1 of 6



## REFERENCE WELLPATH IDENTIFICATION

Operator	KERR-MCGEE OIL & GAS ONSHORE LP	Slot	SLOT#33 WEICHEL 13N-11HZ (354'FSL & 335'FWL, SEC.14)
Area	COLORADO	Well	WEICHEL 13N-11HZ
Field	WELD COUNTY (KERR MCGEE)	Wellbore	WEICHEL 13N-11HZ AWB
Facility	SEC.14-T2N-R65W		

## REPORT SETUP INFORMATION

Projection System	NAD83 / Lambert Colorado SP, Northern Zone (501), US feet	Software System	WellArchitect® 3.0.0
North Reference	True	User	Augunora
Scale	0.999959	Report Generated	04/Oct/2012 at 14:24
Convergence at slot	0.56° East	Database/Source file	WA_ANADARKO/WEICHEL_13N-11HZ_AWB.xml

## WELLPATH LOCATION

	Local coordinates		Grid coordinates		Geographic coordinates	
	North[ft]	East[ft]	Easting[US ft]	Northing[US ft]	Latitude	Longitude
Slot Location	-4276.77	-1695.05	3240619.60	1292222.77	40°07'56.424"N	104°38'21.955"W
Facility Reference Pt			3242272.71	1296515.72	40°08'38.688"N	104°38'00.132"W
Field Reference Pt			3197771.84	1268891.29	40°04'09.600"N	104°47'36.000"W

## WELLPATH DATUM

Calculation method	Minimum curvature	ENSIGN 145 (RKB) to Facility Vertical Datum	4906.00ft
Horizontal Reference Pt	Slot	ENSIGN 145 (RKB) to Mean Sea Level	4906.00ft
Vertical Reference Pt	ENSIGN 145 (RKB)	ENSIGN 145 (RKB) to Mud Line at Slot (SLOT#33 WEICHEL 13N-11HZ (354'FSL & 335'FWL, SEC.14))	4906.00ft
MD Reference Pt	ENSIGN 145 (RKB)	Section Origin	N 0.00, E 0.00 ft
Field Vertical Reference	Mean Sea Level	Section Azimuth	3.07°



# Actual Wellpath Report

WEICHEL 13N-11HZ AWP

Page 2 of 6



## REFERENCE WELLPATH IDENTIFICATION

Operator	KERR-MCGEE OIL & GAS ONSHORE LP	Slot	SLOT#33 WEICHEL 13N-11HZ (354'FSL & 335'FWL, SEC.14)
Area	COLORADO	Well	WEICHEL 13N-11HZ
Field	WELD COUNTY (KERR MCGEE)	Wellbore	WEICHEL 13N-11HZ AWB
Facility	SEC.14-T2N-R65W		

## WELLPATH DATA (133 stations) † = interpolated/extrapolated station

MD [ft]	Inclination [°]	Azimuth [°]	TVD [ft]	Vert Sect [ft]	North [ft]	East [ft]	Latitude	Longitude	DLS [°/100ft]	Comments
0.00†	0.000	320.053	0.00	0.00	0.00	0.00	40°07'56.424"N	104°38'21.955"W	0.00	
13.00	0.000	320.053	13.00	0.00	0.00	0.00	40°07'56.424"N	104°38'21.955"W	0.00	Tie-On
100.00	0.256	320.053	100.00	0.14	0.15	-0.12	40°07'56.425"N	104°38'21.957"W	0.29	Begin GYRO Surveys
200.00	0.274	216.380	200.00	0.11	0.13	-0.41	40°07'56.425"N	104°38'21.960"W	0.42	
300.00	0.098	224.766	300.00	-0.16	-0.13	-0.61	40°07'56.423"N	104°38'21.963"W	0.18	
400.00	0.352	290.386	400.00	-0.13	-0.08	-0.96	40°07'56.423"N	104°38'21.967"W	0.32	
500.00	0.257	240.027	500.00	-0.16	-0.08	-1.44	40°07'56.423"N	104°38'21.974"W	0.27	
600.00	0.224	324.840	600.00	-0.13	-0.04	-1.75	40°07'56.424"N	104°38'21.978"W	0.33	
700.00	0.328	244.291	700.00	-0.11	0.00	-2.12	40°07'56.424"N	104°38'21.982"W	0.37	
800.00	0.357	317.137	799.99	-0.04	0.10	-2.59	40°07'56.425"N	104°38'21.988"W	0.41	
900.00	0.398	305.658	899.99	0.37	0.53	-3.08	40°07'56.429"N	104°38'21.995"W	0.09	
1000.00	0.822	183.787	999.99	-0.16	0.02	-3.41	40°07'56.424"N	104°38'21.999"W	1.09	
1100.00	2.316	146.390	1099.95	-2.50	-2.38	-2.34	40°07'56.401"N	104°38'21.985"W	1.74	
1200.00	4.089	152.233	1199.79	-7.18	-7.22	0.44	40°07'56.353"N	104°38'21.949"W	1.80	
1300.00	6.452	149.708	1299.36	-14.94	-15.22	4.93	40°07'56.274"N	104°38'21.891"W	2.37	
1400.00	9.086	144.886	1398.43	-25.84	-26.54	12.31	40°07'56.162"N	104°38'21.797"W	2.71	
1500.00	10.496	133.886	1496.98	-38.00	-39.31	23.42	40°07'56.036"N	104°38'21.654"W	2.34	
1600.00	11.108	124.210	1595.22	-48.93	-51.04	37.95	40°07'55.920"N	104°38'21.466"W	1.91	
1700.00	11.602	117.005	1693.27	-57.99	-61.02	54.88	40°07'55.821"N	104°38'21.248"W	1.50	
1800.00	12.038	115.372	1791.15	-66.03	-70.06	73.26	40°07'55.732"N	104°38'21.012"W	0.55	
1900.00	10.631	113.619	1889.19	-73.22	-78.22	91.13	40°07'55.651"N	104°38'20.782"W	1.45	
2000.00	11.072	111.375	1987.41	-79.47	-85.42	108.53	40°07'55.580"N	104°38'20.558"W	0.61	
2100.00	9.084	112.118	2085.86	-85.07	-91.89	124.78	40°07'55.516"N	104°38'20.348"W	1.99	
2200.00	9.086	116.760	2184.61	-90.81	-98.42	139.15	40°07'55.451"N	104°38'20.164"W	0.73	
2300.00	10.083	121.829	2283.21	-98.20	-106.59	153.63	40°07'55.371"N	104°38'19.977"W	1.31	
2400.00	9.465	121.433	2381.76	-106.31	-115.49	168.09	40°07'55.283"N	104°38'19.791"W	0.62	
2500.00	9.614	121.389	2480.38	-114.18	-124.13	182.23	40°07'55.197"N	104°38'19.609"W	0.15	
2600.00	9.361	121.222	2579.01	-121.98	-132.70	196.31	40°07'55.113"N	104°38'19.428"W	0.25	
2700.00	8.575	120.451	2677.78	-129.24	-140.69	209.70	40°07'55.034"N	104°38'19.255"W	0.80	
2800.00	6.074	112.318	2776.96	-134.41	-146.48	221.02	40°07'54.976"N	104°38'19.109"W	2.70	
2900.00	4.830	101.928	2876.51	-136.81	-149.36	230.03	40°07'54.948"N	104°38'18.993"W	1.58	
3000.00	3.827	87.991	2976.23	-137.16	-150.11	237.49	40°07'54.941"N	104°38'18.897"W	1.45	
3100.00	2.367	70.960	3076.08	-136.08	-149.32	242.78	40°07'54.948"N	104°38'18.829"W	1.71	
3200.00	0.547	37.492	3176.05	-134.91	-148.27	245.02	40°07'54.959"N	104°38'18.801"W	1.93	
3300.00	0.221	14.877	3276.04	-134.33	-147.70	245.36	40°07'54.964"N	104°38'18.796"W	0.35	
3400.00	0.279	99.589	3376.04	-134.17	-147.56	245.65	40°07'54.966"N	104°38'18.792"W	0.34	
3500.00	0.512	121.713	3476.04	-134.41	-147.83	246.27	40°07'54.963"N	104°38'18.784"W	0.27	
3600.00	0.649	146.797	3576.03	-135.08	-148.54	246.96	40°07'54.956"N	104°38'18.776"W	0.29	
3700.00	0.811	336.720	3676.03	-134.90	-148.37	246.99	40°07'54.958"N	104°38'18.775"W	1.45	
3800.00	0.789	339.841	3776.02	-133.64	-147.07	246.47	40°07'54.971"N	104°38'18.782"W	0.05	
3900.00	0.974	323.931	3876.01	-132.35	-145.74	245.73	40°07'54.984"N	104°38'18.791"W	0.31	
4000.00	0.897	332.055	3976.00	-131.02	-144.36	244.87	40°07'54.997"N	104°38'18.802"W	0.15	
4100.00	1.110	330.868	4075.98	-129.53	-142.82	244.03	40°07'55.013"N	104°38'18.813"W	0.21	
4200.00	1.103	341.339	4175.96	-127.81	-141.06	243.25	40°07'55.030"N	104°38'18.823"W	0.20	
4300.00	1.334	359.442	4275.94	-125.76	-138.99	242.93	40°07'55.051"N	104°38'18.827"W	0.45	



# Actual Wellpath Report

WEICHEL 13N-11HZ AWP

Page 3 of 6



## REFERENCE WELLPATH IDENTIFICATION

Operator	KERR-MCGEE OIL & GAS ONSHORE LP	Slot	SLOT#33 WEICHEL 13N-11HZ (354'FSL & 335'FWL, SEC.14)
Area	COLORADO	Well	WEICHEL 13N-11HZ
Field	WELD COUNTY (KERR MCGEE)	Wellbore	WEICHEL 13N-11HZ AWB
Facility	SEC.14-T2N-R65W		

## WELLPATH DATA (133 stations) † = interpolated/extrapolated station

MD [ft]	Inclination [°]	Azimuth [°]	TVD [ft]	Vert Sect [ft]	North [ft]	East [ft]	Latitude	Longitude	DLS [°/100ft]	Comments
4400.00	1.292	332.576	4375.92	-123.62	-136.82	242.40	40°07'55.072"N	104°38'18.834"W	0.61	
4500.00	2.091	295.371	4475.87	-121.96	-135.04	240.23	40°07'55.090"N	104°38'18.862"W	1.32	
4600.00	1.547	258.281	4575.83	-121.61	-134.53	237.26	40°07'55.095"N	104°38'18.900"W	1.27	
4700.00	1.612	171.803	4675.80	-123.34	-136.20	236.14	40°07'55.078"N	104°38'18.915"W	2.16	
4800.00	1.562	214.655	4775.77	-125.88	-138.71	235.57	40°07'55.053"N	104°38'18.922"W	1.16	
4900.00	0.829	192.764	4875.74	-127.75	-140.54	234.63	40°07'55.035"N	104°38'18.934"W	0.85	
5000.00	1.582	98.696	4975.73	-128.60	-141.45	235.84	40°07'55.026"N	104°38'18.919"W	1.84	
5100.00	1.138	67.029	5075.70	-128.30	-141.27	238.11	40°07'55.028"N	104°38'18.889"W	0.86	
5200.00	1.227	52.861	5175.68	-127.17	-140.24	239.88	40°07'55.038"N	104°38'18.867"W	0.30	
5300.00	0.674	356.561	5275.67	-125.90	-139.01	240.70	40°07'55.050"N	104°38'18.856"W	1.02	
5400.00	1.149	309.241	5375.66	-124.72	-137.78	239.89	40°07'55.062"N	104°38'18.867"W	0.85	
5500.00	1.412	245.356	5475.64	-124.70	-137.66	237.99	40°07'55.064"N	104°38'18.891"W	1.37	
5600.00	1.486	249.296	5575.60	-125.80	-138.64	235.66	40°07'55.054"N	104°38'18.921"W	0.12	
5700.00	1.499	253.562	5675.57	-126.76	-139.46	233.19	40°07'55.046"N	104°38'18.953"W	0.11	
5800.00	0.870	205.324	5775.55	-127.90	-140.52	231.61	40°07'55.035"N	104°38'18.973"W	1.13	
5900.00	1.063	210.341	5875.54	-129.42	-142.01	230.82	40°07'55.021"N	104°38'18.983"W	0.21	
6000.00	1.051	215.829	5975.52	-131.02	-143.55	229.81	40°07'55.005"N	104°38'18.996"W	0.10	
6100.00	1.180	220.678	6075.50	-132.61	-145.08	228.61	40°07'54.990"N	104°38'19.012"W	0.16	
6200.00	1.336	237.068	6175.48	-134.11	-146.49	226.96	40°07'54.976"N	104°38'19.033"W	0.39	
6300.00	0.564	2.635	6275.47	-134.30	-146.63	226.00	40°07'54.975"N	104°38'19.045"W	1.73	
6400.00	7.173	28.850	6375.19	-128.18	-140.67	229.04	40°07'55.034"N	104°38'19.006"W	6.67	
6500.00	15.459	29.428	6473.16	-110.58	-123.56	238.62	40°07'55.203"N	104°38'18.883"W	8.29	
6600.00	27.614	17.271	6566.04	-76.03	-89.68	252.10	40°07'55.538"N	104°38'18.709"W	12.89	
6700.00	39.746	357.275	6649.36	-21.39	-35.25	257.50	40°07'56.076"N	104°38'18.640"W	16.30	
6800.00	45.115	357.333	6723.14	45.72	32.12	254.33	40°07'56.741"N	104°38'18.681"W	5.37	
6900.00	56.484	357.732	6786.24	122.72	109.42	251.02	40°07'57.505"N	104°38'18.723"W	11.37	
7000.00	60.120	358.791	6838.78	207.49	194.45	248.45	40°07'58.346"N	104°38'18.756"W	3.75	
7100.00	70.267	1.715	6880.68	298.03	285.09	248.95	40°07'59.241"N	104°38'18.750"W	10.49	
7200.00	76.453	359.939	6909.31	393.72	380.84	250.31	40°08'00.187"N	104°38'18.732"W	6.42	
7300.00	84.918	359.738	6925.48	492.15	479.43	250.03	40°08'01.162"N	104°38'18.736"W	8.47	
7344.00†	86.259	359.573	6928.86	535.94	523.30	249.76	40°08'01.595"N	104°38'18.739"W	3.07	7" Casing Point
7400.00	87.965	359.363	6931.68	591.76	579.22	249.24	40°08'02.148"N	104°38'18.746"W	3.07	
7500.00	89.075	358.552	6934.27	691.46	679.17	247.43	40°08'03.136"N	104°38'18.769"W	1.37	
7600.00	90.728	358.956	6934.44	791.17	779.14	245.25	40°08'04.124"N	104°38'18.797"W	1.70	
7700.00	90.763	358.812	6933.14	890.90	879.11	243.30	40°08'05.111"N	104°38'18.822"W	0.15	
7800.00	90.671	358.968	6931.89	990.62	979.09	241.37	40°08'06.099"N	104°38'18.847"W	0.18	
7900.00	90.574	358.711	6930.80	1090.35	1079.06	239.34	40°08'07.087"N	104°38'18.873"W	0.27	
8000.00	90.409	358.831	6929.94	1190.06	1179.03	237.20	40°08'08.075"N	104°38'18.901"W	0.20	
8100.00	90.741	358.863	6928.94	1289.78	1279.01	235.18	40°08'09.063"N	104°38'18.927"W	0.33	
8200.00	91.262	358.574	6927.19	1389.48	1378.97	232.95	40°08'10.051"N	104°38'18.956"W	0.60	
8300.00	91.272	358.829	6924.98	1489.16	1478.92	230.68	40°08'11.039"N	104°38'18.985"W	0.26	
8400.00	91.659	359.002	6922.42	1588.87	1578.87	228.79	40°08'12.027"N	104°38'19.009"W	0.42	
8500.00	91.955	0.565	6919.27	1688.65	1678.81	228.41	40°08'13.014"N	104°38'19.014"W	1.59	
8600.00	91.755	0.449	6916.03	1788.50	1778.76	229.30	40°08'14.002"N	104°38'19.003"W	0.23	
8700.00	90.002	1.817	6914.50	1888.42	1878.72	231.27	40°08'14.990"N	104°38'18.977"W	2.22	



# Actual Wellpath Report

WEICHEL 13N-11HZ AWP

Page 4 of 6



## REFERENCE WELLPATH IDENTIFICATION

Operator	KERR-MCGEE OIL & GAS ONSHORE LP	Slot	SLOT#33 WEICHEL 13N-11HZ (354'FSL & 335'FWL, SEC.14)
Area	COLORADO	Well	WEICHEL 13N-11HZ
Field	WELD COUNTY (KERR MCGEE)	Wellbore	WEICHEL 13N-11HZ AWB
Facility	SEC.14-T2N-R65W		

## WELLPATH DATA (133 stations)

MD [ft]	Inclination [°]	Azimuth [°]	TVD [ft]	Vert Sect [ft]	North [ft]	East [ft]	Latitude	Longitude	DLS [°/100ft]	Comments
8800.00	89.151	3.640	6915.24	1988.41	1978.60	236.03	40°08'15.977"N	104°38'18.916"W	2.01	
8900.00	89.412	3.977	6916.49	2088.39	2078.37	242.68	40°08'16.963"N	104°38'18.830"W	0.43	
9000.00	87.916	3.432	6918.82	2188.36	2178.13	249.14	40°08'17.948"N	104°38'18.747"W	1.59	
9100.00	87.378	2.408	6922.93	2288.27	2277.91	254.23	40°08'18.935"N	104°38'18.682"W	1.16	
9200.00	86.531	2.634	6928.24	2388.12	2377.68	258.62	40°08'19.920"N	104°38'18.625"W	0.88	
9300.00	87.661	1.199	6933.31	2487.97	2477.49	261.96	40°08'20.907"N	104°38'18.582"W	1.83	
9400.00	88.466	359.565	6936.69	2587.80	2577.42	262.62	40°08'21.894"N	104°38'18.574"W	1.82	
9500.00	88.277	358.934	6939.53	2687.54	2677.37	261.31	40°08'22.882"N	104°38'18.590"W	0.66	
9600.00	87.656	358.009	6943.08	2787.15	2777.27	258.65	40°08'23.869"N	104°38'18.625"W	1.11	
9700.00	87.702	358.533	6947.13	2886.72	2877.15	255.63	40°08'24.856"N	104°38'18.663"W	0.53	
9800.00	88.931	358.704	6950.07	2986.37	2977.07	253.22	40°08'25.844"N	104°38'18.694"W	1.24	
9900.00	88.172	0.102	6952.59	3086.13	3077.03	252.18	40°08'26.831"N	104°38'18.708"W	1.59	
10000.00	88.811	0.604	6955.23	3185.98	3176.99	252.80	40°08'27.819"N	104°38'18.700"W	0.81	
10100.00	87.306	0.825	6958.61	3285.83	3276.93	254.04	40°08'28.807"N	104°38'18.684"W	1.52	
10200.00	88.325	1.160	6962.43	3385.69	3376.84	255.78	40°08'29.794"N	104°38'18.662"W	1.07	
10300.00	88.134	1.662	6965.51	3485.60	3476.76	258.24	40°08'30.782"N	104°38'18.630"W	0.54	
10400.00	87.897	1.904	6968.98	3585.52	3576.65	261.35	40°08'31.769"N	104°38'18.590"W	0.34	
10500.00	88.149	4.072	6972.43	3685.45	3676.45	266.56	40°08'32.755"N	104°38'18.523"W	2.18	
10600.00	91.149	2.072	6973.04	3785.43	3776.29	271.91	40°08'33.742"N	104°38'18.454"W	3.61	
10700.00	90.931	1.885	6971.23	3885.40	3876.21	275.36	40°08'34.729"N	104°38'18.409"W	0.29	
10800.00	91.878	2.739	6968.77	3985.36	3976.10	279.40	40°08'35.716"N	104°38'18.357"W	1.28	
10840.00	90.928	2.859	6967.80	4025.35	4016.04	281.35	40°08'36.111"N	104°38'18.332"W	2.39	Tie-Into GYRO Surveys
10885.00	89.410	2.410	6967.66	4070.34	4060.99	283.42	40°08'36.555"N	104°38'18.306"W	3.52	Begin BHI MWD Surveys
10916.00	89.600	2.420	6967.93	4101.34	4091.96	284.72	40°08'36.861"N	104°38'18.289"W	0.61	
10948.00	89.190	1.780	6968.27	4133.33	4123.93	285.90	40°08'37.177"N	104°38'18.274"W	2.38	
10979.00	89.260	359.520	6968.69	4164.30	4154.93	286.25	40°08'37.483"N	104°38'18.269"W	7.29	
11011.00	89.320	358.720	6969.08	4196.22	4186.92	285.76	40°08'37.800"N	104°38'18.275"W	2.51	
11042.00	89.250	359.920	6969.47	4227.15	4217.92	285.39	40°08'38.106"N	104°38'18.280"W	3.88	
11074.00	89.290	358.890	6969.88	4259.08	4249.91	285.06	40°08'38.422"N	104°38'18.284"W	3.22	
11106.00	89.010	359.570	6970.35	4291.01	4281.90	284.63	40°08'38.738"N	104°38'18.290"W	2.30	
11137.00	88.760	359.580	6970.96	4321.94	4312.90	284.40	40°08'39.044"N	104°38'18.293"W	0.81	
11169.00	88.650	359.520	6971.68	4353.88	4344.89	284.15	40°08'39.361"N	104°38'18.296"W	0.39	
11200.00	88.520	359.680	6972.45	4384.81	4375.88	283.93	40°08'39.667"N	104°38'18.299"W	0.66	
11232.00	89.010	358.750	6973.13	4416.73	4407.87	283.49	40°08'39.983"N	104°38'18.305"W	3.28	
11264.00	89.690	358.920	6973.50	4448.64	4439.86	282.84	40°08'40.299"N	104°38'18.313"W	2.19	
11295.00	89.470	358.380	6973.73	4479.55	4470.85	282.11	40°08'40.605"N	104°38'18.322"W	1.88	
11359.00	88.980	358.580	6974.59	4543.33	4534.82	280.41	40°08'41.237"N	104°38'18.344"W	0.83	
11453.00	90.520	358.560	6975.00	4637.04	4628.79	278.07	40°08'42.166"N	104°38'18.374"W	1.64	
11548.00	89.630	358.900	6974.88	4731.77	4723.76	275.96	40°08'43.105"N	104°38'18.401"W	1.00	
11643.00	88.270	357.660	6976.62	4826.41	4818.70	273.11	40°08'44.043"N	104°38'18.438"W	1.94	
11738.00	89.560	356.920	6978.42	4920.91	4913.57	268.62	40°08'44.980"N	104°38'18.496"W	1.57	
11764.00	89.380	357.990	6978.66	4946.78	4939.55	267.47	40°08'45.237"N	104°38'18.511"W	4.17	Last BHI MWD Survey
11821.00	89.380	357.990	6979.27	5003.56	4996.51	265.47	40°08'45.800"N	104°38'18.537"W	0.00	Projection to Bit



# Actual Wellpath Report

WEICHEL 13N-11HZ AWP

Page 5 of 6



## REFERENCE WELLPATH IDENTIFICATION

Operator	KERR-MCGEE OIL & GAS ONSHORE LP	Slot	SLOT#33 WEICHEL 13N-11HZ (354'FSL & 335'FWL, SEC.14)
Area	COLORADO	Well	WEICHEL 13N-11HZ
Field	WELD COUNTY (KERR MCGEE)	Wellbore	WEICHEL 13N-11HZ AWB
Facility	SEC.14-T2N-R65W		

## HOLE & CASING SECTIONS - Ref Wellbore: WEICHEL 13N-11HZ AWB Ref Wellpath: WEICHEL 13N-11HZ AWP

String/Diameter	Start MD [ft]	End MD [ft]	Interval [ft]	Start TVD [ft]	End TVD [ft]	Start N/S [ft]	Start E/W [ft]	End N/S [ft]	End E/W [ft]
13.5in Open Hole	13.00	927.00	914.00	13.00	926.99	0.00	0.00	0.58	-3.22
9.625in Casing Surface	13.00	927.00	914.00	13.00	926.99	0.00	0.00	0.58	-3.22
8.75in Open Hole	927.00	7354.00	6427.00	926.99	6929.49	0.58	-3.22	533.28	249.69
7in Casing Intermediate	13.00	7344.00	7331.00	13.00	6928.86	0.00	0.00	523.30	249.76
6.125in Open Hole	7354.00	11821.00	4467.00	6929.49	6979.27	533.28	249.69	4996.51	265.47

## TARGETS

Name	MD [ft]	TVD [ft]	North [ft]	East [ft]	Grid East [US ft]	Grid North [US ft]	Latitude	Longitude	Shape
WEICHEL 3 PAD SECTION 11 LINES		11.00	131.93	4563.11	3245181.02	1292398.97	40°07'57.724"N	104°37'23.207"W	polygon
WEICHEL 3 PAD SECTION 14 LINES		11.00	131.93	4563.11	3245181.02	1292398.97	40°07'57.724"N	104°37'23.207"W	polygon
WEICHEL 13N-11HZ BHL ON PLAT (460'FSL & 575'FWL, SEC.11) REV-1		6934.00	5406.55	268.38	3240835.49	1297631.44	40°08'49.852"N	104°38'18.499"W	point
WEICHEL 13N-11HZ BHL ON PLAT (50'FSL & 575'FWL, SEC.11) REV-2		6934.00	4996.55	268.38	3240839.47	1297221.48	40°08'45.800"N	104°38'18.499"W	point
WEICHEL 13-14HZ PAD SEC. 11 HARDLINES (460' SETBACKS)		7500.00	22.26	-20.12	3240599.27	1292244.84	40°07'56.644"N	104°38'22.214"W	polygon
WEICHEL 13-14HZ PAD SEC. 14 HARDLINES (460' SETBACKS)		7501.00	44.83	-40.00	3240579.17	1292267.21	40°07'56.867"N	104°38'22.470"W	polygon

## WELLPATH COMPOSITION - Ref Wellbore: WEICHEL 13N-11HZ AWB Ref Wellpath: WEICHEL 13N-11HZ AWP

Start MD [ft]	End MD [ft]	Positional Uncertainty Model	Log Name/Comment	Wellbore
13.00	10840.00	Generic gyro - continuous (Standard)	Ves Gryo Surveys <100-10840>	WEICHEL 13N-11HZ AWB
10840.00	11764.00	OnTrak (Standard)	BHI OnTrak Surveys <10885-11764>	WEICHEL 13N-11HZ AWB
11764.00	11821.00	Blind Drilling (std)	Projection to bit	WEICHEL 13N-11HZ AWB



# Actual Wellpath Report

WEICHEL 13N-11HZ AWP

Page 6 of 6



## REFERENCE WELLPATH IDENTIFICATION

Operator	KERR-MCGEE OIL & GAS ONSHORE LP	Slot	SLOT#33 WEICHEL 13N-11HZ (354'FSL & 335'FWL, SEC.14)
Area	COLORADO	Well	WEICHEL 13N-11HZ
Field	WELD COUNTY (KERR MCGEE)	Wellbore	WEICHEL 13N-11HZ AWB
Facility	SEC.14-T2N-R65W		

## WELLPATH COMMENTS

MD [ft]	Inclination [°]	Azimuth [°]	TVD [ft]	Comment
13.00	0.000	320.053	13.00	Tie-On
100.00	0.256	320.053	100.00	Begin GYRO Surveys
7344.00	86.259	359.573	6928.86	7" Casing Point
10840.00	90.928	2.859	6967.80	Tie-Into GYRO Surveys
10885.00	89.410	2.410	6967.66	Begin BHI MWD Surveys
11764.00	89.380	357.990	6978.66	Last BHI MWD Survey
11821.00	89.380	357.990	6979.27	Projection to Bit