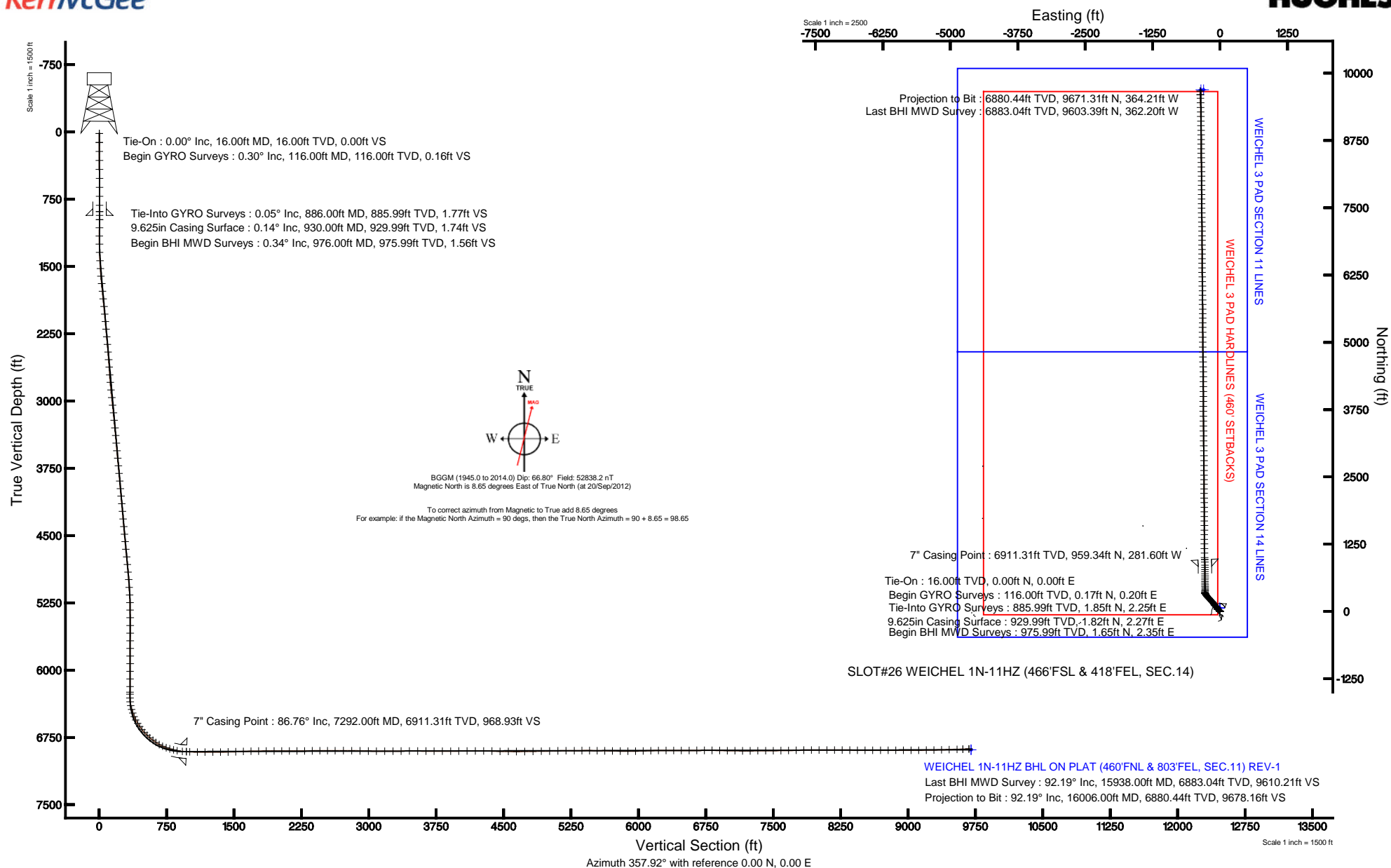


# KERR-MCGEE OIL & GAS ONSHORE LP

Location: COLORADO Slot: SLOT#26 WEICHEL 1N-11HZ (466'FSL & 418'FEL, SEC.14)  
 Field: WELD COUNTY (KERR MCGEE) Well: WEICHEL 1N-11HZ  
 Facility: SEC.14-T2N-R65W Wellbore: WEICHEL 1N-11HZ PWB

Plot reference wellpath is WEICHEL 1N-11HZ (REV-A.0) PWP

True vertical depths are referenced to XTREME 20 (RKB)	Grid System: NAD83 / Lambert Colorado SP, Northern Zone (501), US feet
Measured depths are referenced to XTREME 20 (RKB)	North Reference: True north
XTREME 20 (RKB) to Mean Sea Level: 4895 feet	Scale: True distance
Mean Sea Level to Mud line (At Slot: SLOT#26 WEICHEL 1N-11HZ (466'FSL & 418'FEL, SEC.14)): 0 feet	Depths are in feet
Coordinates are in feet referenced to Slot	Created by: augunora on 27/Sep/2012





# Actual Wellpath Report

WEICHEL 1N-11HZ AWP

Page 1 of 8



## REFERENCE WELLPATH IDENTIFICATION

Operator	KERR-MCGEE OIL & GAS ONSHORE LP	Slot	SLOT#26 WEICHEL 1N-11HZ (466'FSL & 418'FEL, SEC.14)
Area	COLORADO	Well	WEICHEL 1N-11HZ
Field	WELD COUNTY (KERR MCGEE)	Wellbore	WEICHEL 1N-11HZ AWB
Facility	SEC.14-T2N-R65W		

## REPORT SETUP INFORMATION

Projection System	NAD83 / Lambert Colorado SP, Northern Zone (501), US feet	Software System	WellArchitect® 3.0.0
North Reference	True	User	Augunora
Scale	0.999959	Report Generated	27/Sep/2012 at 14:09
Convergence at slot	0.57° East	Database/Source file	WA_ANADARKO/WEICHEL_1N-11HZ_AWB.xml

## WELLPATH LOCATION

	Local coordinates		Grid coordinates		Geographic coordinates	
	North[ft]	East[ft]	Easting[US ft]	Northing[US ft]	Latitude	Longitude
Slot Location	-4205.26	2871.99	3245185.53	1292338.91	40°07'57.130"N	104°37'23.156"W
Facility Reference Pt			3242272.71	1296515.72	40°08'38.688"N	104°38'00.132"W
Field Reference Pt			3197771.84	1268891.29	40°04'09.600"N	104°47'36.000"W

## WELLPATH DATUM

Calculation method	Minimum curvature	XTREME 20 (RKB) to Facility Vertical Datum	4895.00ft
Horizontal Reference Pt	Slot	XTREME 20 (RKB) to Mean Sea Level	4895.00ft
Vertical Reference Pt	XTREME 20 (RKB)	XTREME 20 (RKB) to Mud Line at Slot (SLOT#26 WEICHEL 1N-11HZ (466'FSL & 418'FEL, SEC.14))	4895.00ft
MD Reference Pt	XTREME 20 (RKB)	Section Origin	N 0.00, E 0.00 ft
Field Vertical Reference	Mean Sea Level	Section Azimuth	357.84°



# Actual Wellpath Report

WEICHEL 1N-11HZ AWP

Page 2 of 8



## REFERENCE WELLPATH IDENTIFICATION

Operator	KERR-MCGEE OIL & GAS ONSHORE LP	Slot	SLOT#26 WEICHEL 1N-11HZ (466'FSL & 418'FEL, SEC.14)
Area	COLORADO	Well	WEICHEL 1N-11HZ
Field	WELD COUNTY (KERR MCGEE)	Wellbore	WEICHEL 1N-11HZ AWB
Facility	SEC.14-T2N-R65W		

## WELLPATH DATA (199 stations) † = interpolated/extrapolated station

MD [ft]	Inclination [°]	Azimuth [°]	TVD [ft]	Vert Sect [ft]	North [ft]	East [ft]	Latitude	Longitude	DLS [°/100ft]	Comments
0.00†	0.000	48.960	0.00	0.00	0.00	0.00	40°07'57.130"N	104°37'23.156"W	0.00	
16.00	0.000	48.960	16.00	0.00	0.00	0.00	40°07'57.130"N	104°37'23.156"W	0.00	Tie-On
116.00	0.300	48.960	116.00	0.16	0.17	0.20	40°07'57.131"N	104°37'23.154"W	0.30	Begin GYRO Surveys
216.00	0.160	345.120	216.00	0.46	0.48	0.36	40°07'57.134"N	104°37'23.152"W	0.27	
316.00	0.120	32.480	316.00	0.69	0.70	0.38	40°07'57.137"N	104°37'23.152"W	0.12	
416.00	0.170	336.640	416.00	0.91	0.93	0.38	40°07'57.139"N	104°37'23.152"W	0.14	
516.00	0.490	34.210	516.00	1.39	1.42	0.56	40°07'57.144"N	104°37'23.149"W	0.42	
616.00	0.400	83.910	615.99	1.76	1.81	1.15	40°07'57.147"N	104°37'23.142"W	0.38	
716.00	0.280	103.170	715.99	1.72	1.79	1.73	40°07'57.147"N	104°37'23.134"W	0.16	
816.00	0.210	72.340	815.99	1.71	1.79	2.14	40°07'57.147"N	104°37'23.129"W	0.15	
886.00	0.050	334.170	885.99	1.77	1.85	2.25	40°07'57.148"N	104°37'23.127"W	0.32	Tie-Into GYRO Surveys
976.00	0.340	153.860	975.99	1.56	1.65	2.35	40°07'57.146"N	104°37'23.126"W	0.43	Begin BHI MWD Surveys
1067.00	0.370	163.670	1066.99	1.03	1.13	2.55	40°07'57.141"N	104°37'23.124"W	0.07	
1159.00	0.270	196.170	1158.99	0.54	0.63	2.58	40°07'57.136"N	104°37'23.123"W	0.22	
1251.00	1.360	300.250	1250.98	0.91	0.97	1.57	40°07'57.139"N	104°37'23.136"W	1.58	
1343.00	2.580	312.080	1342.92	2.94	2.91	-0.91	40°07'57.158"N	104°37'23.168"W	1.39	
1435.00	3.770	311.980	1434.78	6.50	6.32	-4.69	40°07'57.192"N	104°37'23.217"W	1.29	
1522.00	5.370	312.040	1521.50	11.33	10.96	-9.84	40°07'57.238"N	104°37'23.283"W	1.84	
1608.00	6.900	316.000	1607.01	17.98	17.37	-16.42	40°07'57.301"N	104°37'23.368"W	1.84	
1693.00	7.420	316.400	1691.34	25.90	25.02	-23.75	40°07'57.377"N	104°37'23.462"W	0.61	
1778.00	7.350	320.150	1775.64	34.31	33.17	-31.02	40°07'57.457"N	104°37'23.556"W	0.57	
1863.00	7.430	321.230	1859.93	43.03	41.63	-37.95	40°07'57.541"N	104°37'23.645"W	0.19	
1949.00	6.260	324.500	1945.32	51.41	49.78	-44.15	40°07'57.622"N	104°37'23.725"W	1.43	
2034.00	6.280	324.040	2029.81	59.14	57.32	-49.57	40°07'57.696"N	104°37'23.795"W	0.06	
2119.00	6.310	327.130	2114.30	67.02	65.00	-54.84	40°07'57.772"N	104°37'23.862"W	0.40	
2204.00	6.910	319.520	2198.73	75.05	72.82	-60.69	40°07'57.849"N	104°37'23.938"W	1.25	
2289.00	6.480	318.990	2283.15	82.80	80.33	-67.16	40°07'57.923"N	104°37'24.021"W	0.51	
2375.00	6.290	318.350	2368.62	90.21	87.51	-73.47	40°07'57.994"N	104°37'24.102"W	0.24	
2460.00	5.900	318.490	2453.14	97.18	94.26	-79.46	40°07'58.061"N	104°37'24.179"W	0.46	
2545.00	5.920	311.890	2537.69	103.61	100.46	-85.62	40°07'58.122"N	104°37'24.259"W	0.80	
2630.00	5.010	318.400	2622.30	109.52	106.16	-91.35	40°07'58.179"N	104°37'24.332"W	1.29	
2716.00	5.210	318.740	2707.96	115.45	111.90	-96.42	40°07'58.235"N	104°37'24.398"W	0.24	
2801.00	5.760	320.960	2792.57	121.86	118.12	-101.65	40°07'58.297"N	104°37'24.465"W	0.69	
2886.00	6.990	330.180	2877.05	129.85	125.92	-106.91	40°07'58.374"N	104°37'24.533"W	1.88	
2971.00	6.430	326.290	2961.46	138.49	134.36	-112.12	40°07'58.457"N	104°37'24.600"W	0.85	
3057.00	7.130	329.000	3046.86	147.27	142.95	-117.54	40°07'58.542"N	104°37'24.670"W	0.89	
3142.00	6.740	328.990	3131.24	156.26	151.74	-122.83	40°07'58.629"N	104°37'24.738"W	0.46	
3227.00	7.100	324.350	3215.62	165.01	160.29	-128.46	40°07'58.714"N	104°37'24.810"W	0.78	
3312.00	6.760	320.120	3300.00	173.34	168.39	-134.73	40°07'58.794"N	104°37'24.891"W	0.72	
3397.00	7.240	315.310	3384.37	181.25	176.04	-141.71	40°07'58.869"N	104°37'24.981"W	0.89	
3482.00	6.260	316.210	3468.78	188.66	183.19	-148.68	40°07'58.940"N	104°37'25.071"W	1.16	
3568.00	7.420	312.980	3554.16	196.10	190.36	-155.99	40°07'59.011"N	104°37'25.165"W	1.42	
3653.00	7.110	316.900	3638.48	203.96	197.95	-163.60	40°07'59.086"N	104°37'25.263"W	0.69	
3738.00	7.610	315.880	3722.78	212.12	205.83	-171.11	40°07'59.164"N	104°37'25.359"W	0.61	
3823.00	6.650	313.890	3807.12	219.85	213.28	-178.57	40°07'59.237"N	104°37'25.455"W	1.17	



# Actual Wellpath Report

WEICHEL 1N-11HZ AWP  
Page 3 of 8



## REFERENCE WELLPATH IDENTIFICATION

Operator	KERR-MCGEE OIL & GAS ONSHORE LP	Slot	SLOT#26 WEICHEL 1N-11HZ (466'FSL & 418'FEL, SEC.14)
Area	COLORADO	Well	WEICHEL 1N-11HZ
Field	WELD COUNTY (KERR MCGEE)	Wellbore	WEICHEL 1N-11HZ AWB
Facility	SEC.14-T2N-R65W		

## WELLPATH DATA (199 stations)

MD [ft]	Inclination [°]	Azimuth [°]	TVD [ft]	Vert Sect [ft]	North [ft]	East [ft]	Latitude	Longitude	DLS [°/100ft]	Comments
3909.00	6.980	317.250	3892.52	227.40	220.57	-185.71	40°07'59.309"N	104°37'25.547"W	0.60	
3994.00	5.950	316.100	3976.98	234.61	227.54	-192.27	40°07'59.378"N	104°37'25.632"W	1.22	
4079.00	7.220	316.440	4061.41	241.91	234.58	-199.01	40°07'59.448"N	104°37'25.719"W	1.49	
4164.00	7.000	316.040	4145.76	249.77	242.18	-206.28	40°07'59.523"N	104°37'25.812"W	0.27	
4249.00	6.460	315.490	4230.17	257.17	249.32	-213.23	40°07'59.593"N	104°37'25.902"W	0.64	
4334.00	6.740	318.260	4314.61	264.55	256.45	-219.90	40°07'59.664"N	104°37'25.988"W	0.50	
4420.00	6.490	317.020	4400.04	272.11	263.77	-226.58	40°07'59.736"N	104°37'26.074"W	0.33	
4505.00	6.260	321.830	4484.51	279.50	270.93	-232.72	40°07'59.807"N	104°37'26.153"W	0.68	
4590.00	6.250	327.680	4569.01	287.25	278.49	-238.05	40°07'59.882"N	104°37'26.221"W	0.75	
4675.00	7.030	322.550	4653.44	295.49	286.52	-243.69	40°07'59.961"N	104°37'26.294"W	1.15	
4761.00	7.040	321.370	4738.79	304.03	294.82	-250.18	40°08'00.043"N	104°37'26.377"W	0.17	
4846.00	6.450	323.450	4823.20	312.15	302.72	-256.28	40°08'00.121"N	104°37'26.456"W	0.75	
4931.00	5.680	327.860	4907.73	319.74	310.12	-261.36	40°08'00.194"N	104°37'26.521"W	1.06	
5016.00	4.900	335.290	4992.36	326.73	316.98	-265.11	40°08'00.262"N	104°37'26.570"W	1.22	
5102.00	3.760	337.110	5078.12	332.76	322.92	-267.74	40°08'00.321"N	104°37'26.604"W	1.34	
5187.00	3.510	328.690	5162.95	337.64	327.71	-270.18	40°08'00.368"N	104°37'26.635"W	0.69	
5272.00	2.630	301.770	5247.83	341.00	330.96	-273.19	40°08'00.400"N	104°37'26.674"W	1.96	
5357.00	1.320	317.580	5332.78	342.84	332.71	-275.51	40°08'00.417"N	104°37'26.704"W	1.65	
5442.00	0.570	275.230	5417.76	343.64	333.47	-276.59	40°08'00.425"N	104°37'26.717"W	1.15	
5528.00	0.190	223.430	5503.76	343.60	333.40	-277.11	40°08'00.424"N	104°37'26.724"W	0.55	
5613.00	0.430	267.580	5588.76	343.49	333.29	-277.53	40°08'00.423"N	104°37'26.730"W	0.38	
5698.00	0.650	253.230	5673.76	343.37	333.13	-278.31	40°08'00.422"N	104°37'26.740"W	0.30	
5783.00	0.040	47.130	5758.76	343.27	333.02	-278.75	40°08'00.420"N	104°37'26.745"W	0.81	
5868.00	0.090	149.070	5843.76	343.23	332.98	-278.69	40°08'00.420"N	104°37'26.745"W	0.12	
5954.00	0.260	229.960	5929.76	343.05	332.80	-278.81	40°08'00.418"N	104°37'26.746"W	0.30	
6039.00	0.520	219.580	6014.75	342.65	332.37	-279.20	40°08'00.414"N	104°37'26.751"W	0.32	
6124.00	0.560	215.250	6099.75	342.03	331.74	-279.69	40°08'00.408"N	104°37'26.757"W	0.07	
6209.00	0.320	195.070	6184.75	341.47	331.17	-279.99	40°08'00.402"N	104°37'26.761"W	0.33	
6271.00	0.470	169.610	6246.75	341.05	330.75	-279.99	40°08'00.398"N	104°37'26.761"W	0.37	
6295.00	0.520	199.970	6270.74	340.86	330.55	-280.01	40°08'00.396"N	104°37'26.761"W	1.10	
6337.00	1.120	15.190	6312.74	341.07	330.77	-279.97	40°08'00.398"N	104°37'26.761"W	3.90	
6380.00	5.850	11.110	6355.65	343.61	333.33	-279.43	40°08'00.424"N	104°37'26.754"W	11.01	
6422.00	11.080	6.870	6397.18	349.68	339.44	-278.54	40°08'00.484"N	104°37'26.742"W	12.53	
6465.00	15.340	6.030	6439.03	359.39	349.20	-277.44	40°08'00.580"N	104°37'26.728"W	9.92	
6507.00	18.910	6.150	6479.16	371.63	361.50	-276.13	40°08'00.702"N	104°37'26.712"W	8.50	
6551.00	23.320	2.550	6520.20	387.37	377.29	-274.98	40°08'00.858"N	104°37'26.697"W	10.44	
6593.00	27.010	0.170	6558.21	405.20	395.14	-274.58	40°08'01.034"N	104°37'26.692"W	9.11	
6636.00	31.670	0.160	6595.68	426.24	416.21	-274.52	40°08'01.243"N	104°37'26.691"W	10.84	
6678.00	34.630	359.810	6630.84	449.19	439.17	-274.53	40°08'01.470"N	104°37'26.691"W	7.06	
6721.00	38.780	359.140	6665.31	474.88	464.86	-274.77	40°08'01.723"N	104°37'26.694"W	9.70	
6763.00	42.210	358.070	6697.25	502.14	492.13	-275.44	40°08'01.993"N	104°37'26.703"W	8.33	
6806.00	46.150	358.860	6728.08	532.10	522.08	-276.24	40°08'02.289"N	104°37'26.713"W	9.25	
6848.00	48.580	0.100	6756.52	562.98	552.97	-276.51	40°08'02.594"N	104°37'26.716"W	6.18	
6891.00	52.040	1.340	6783.98	596.02	586.05	-276.09	40°08'02.921"N	104°37'26.711"W	8.35	
6933.00	55.700	0.000	6808.74	629.90	619.96	-275.70	40°08'03.256"N	104°37'26.706"W	9.09	



# Actual Wellpath Report

WEICHEL 1N-11HZ AWP

Page 4 of 8



## REFERENCE WELLPATH IDENTIFICATION

Operator	KERR-MCGEE OIL & GAS ONSHORE LP	Slot	SLOT#26 WEICHEL 1N-11HZ (466'FSL & 418'FEL, SEC.14)
Area	COLORADO	Well	WEICHEL 1N-11HZ
Field	WELD COUNTY (KERR MCGEE)	Wellbore	WEICHEL 1N-11HZ AWB
Facility	SEC.14-T2N-R65W		

## WELLPATH DATA (199 stations) † = interpolated/extrapolated station

MD [ft]	Inclination [°]	Azimuth [°]	TVD [ft]	Vert Sect [ft]	North [ft]	East [ft]	Latitude	Longitude	DLS [°/100ft]	Comments
6977.00	60.300	0.060	6832.05	667.18	657.27	-275.68	40°08'03.625"N	104°37'26.706"W	10.46	
7019.00	65.630	359.640	6851.14	704.55	694.66	-275.78	40°08'03.994"N	104°37'26.707"W	12.72	
7062.00	70.880	359.400	6867.06	744.46	734.59	-276.12	40°08'04.389"N	104°37'26.711"W	12.22	
7104.00	74.240	359.270	6879.65	784.51	774.65	-276.58	40°08'04.785"N	104°37'26.717"W	8.01	
7147.00	75.980	359.740	6890.70	826.05	816.20	-276.94	40°08'05.195"N	104°37'26.722"W	4.18	
7189.00	78.370	358.630	6900.02	866.98	857.15	-277.53	40°08'05.600"N	104°37'26.730"W	6.25	
7246.00	85.280	357.490	6908.12	923.37	913.50	-279.44	40°08'06.157"N	104°37'26.754"W	12.28	
7292.00†	86.764	357.106	6911.31	969.25	959.34	-281.60	40°08'06.610"N	104°37'26.782"W	3.33	7" Casing Point
7330.00	87.990	356.790	6913.05	1007.21	997.24	-283.63	40°08'06.984"N	104°37'26.808"W	3.33	
7415.00	89.350	358.530	6915.02	1092.18	1082.14	-287.09	40°08'07.823"N	104°37'26.853"W	2.60	
7500.00	89.320	0.230	6916.01	1177.14	1167.13	-288.01	40°08'08.663"N	104°37'26.865"W	2.00	
7586.00	90.560	359.710	6916.10	1263.08	1253.13	-288.06	40°08'09.513"N	104°37'26.865"W	1.56	
7671.00	90.370	359.980	6915.41	1348.03	1338.12	-288.29	40°08'10.353"N	104°37'26.868"W	0.39	
7756.00	91.260	0.050	6914.20	1432.95	1423.11	-288.27	40°08'11.193"N	104°37'26.868"W	1.05	
7842.00	91.910	0.560	6911.82	1518.84	1509.08	-287.81	40°08'12.042"N	104°37'26.862"W	0.96	
7927.00	92.280	359.600	6908.71	1603.72	1594.02	-287.69	40°08'12.882"N	104°37'26.861"W	1.21	
8012.00	91.170	359.420	6906.15	1688.64	1678.98	-288.42	40°08'13.721"N	104°37'26.870"W	1.32	
8097.00	90.800	359.630	6904.69	1773.59	1763.96	-289.12	40°08'14.561"N	104°37'26.879"W	0.50	
8182.00	91.140	359.660	6903.25	1858.54	1848.95	-289.65	40°08'15.401"N	104°37'26.886"W	0.40	
8268.00	89.510	359.480	6902.77	1944.50	1934.94	-290.29	40°08'16.251"N	104°37'26.894"W	1.91	
8353.00	90.120	359.200	6903.04	2029.47	2019.94	-291.27	40°08'17.091"N	104°37'26.907"W	0.79	
8438.00	89.910	359.580	6903.02	2114.44	2104.93	-292.18	40°08'17.931"N	104°37'26.918"W	0.51	
8523.00	90.460	359.700	6902.74	2199.39	2189.93	-292.71	40°08'18.771"N	104°37'26.925"W	0.66	
8609.00	90.060	359.760	6902.35	2285.34	2275.93	-293.12	40°08'19.620"N	104°37'26.930"W	0.47	
8694.00	90.920	359.730	6901.63	2370.29	2360.92	-293.50	40°08'20.460"N	104°37'26.935"W	1.01	
8779.00	89.780	359.580	6901.11	2455.25	2445.92	-294.01	40°08'21.300"N	104°37'26.942"W	1.35	
8864.00	90.180	0.000	6901.14	2540.20	2530.92	-294.32	40°08'22.140"N	104°37'26.946"W	0.68	
8949.00	90.860	359.910	6900.37	2625.14	2615.91	-294.39	40°08'22.980"N	104°37'26.947"W	0.81	
9041.00	90.060	0.030	6899.63	2717.07	2707.91	-294.43	40°08'23.889"N	104°37'26.948"W	0.88	
9133.00	89.040	0.050	6900.35	2809.00	2799.90	-294.37	40°08'24.798"N	104°37'26.947"W	1.11	
9225.00	88.670	357.870	6902.19	2900.96	2891.87	-296.04	40°08'25.707"N	104°37'26.968"W	2.40	
9317.00	89.040	358.740	6904.03	2992.93	2983.81	-298.76	40°08'26.616"N	104°37'27.003"W	1.03	
9409.00	89.070	358.870	6905.54	3084.91	3075.77	-300.68	40°08'27.525"N	104°37'27.028"W	0.14	
9500.00	89.900	359.650	6906.36	3175.88	3166.76	-301.85	40°08'28.424"N	104°37'27.043"W	1.25	
9592.00	90.700	359.120	6905.88	3267.84	3258.75	-302.84	40°08'29.333"N	104°37'27.056"W	1.04	
9684.00	91.200	359.180	6904.36	3359.80	3350.73	-304.20	40°08'30.242"N	104°37'27.073"W	0.55	
9775.00	89.820	359.600	6903.55	3450.76	3441.72	-305.17	40°08'31.141"N	104°37'27.086"W	1.59	
9867.00	89.540	359.340	6904.06	3542.73	3533.71	-306.02	40°08'32.050"N	104°37'27.097"W	0.42	
9959.00	89.820	359.260	6904.57	3634.69	3625.70	-307.15	40°08'32.959"N	104°37'27.111"W	0.32	
10051.00	89.850	359.720	6904.84	3726.66	3717.70	-307.97	40°08'33.868"N	104°37'27.122"W	0.50	
10142.00	89.880	359.950	6905.05	3817.60	3808.70	-308.23	40°08'34.767"N	104°37'27.125"W	0.25	
10234.00	90.220	0.360	6904.97	3909.53	3900.70	-307.98	40°08'35.677"N	104°37'27.122"W	0.58	
10326.00	90.580	0.450	6904.33	4001.43	3992.69	-307.33	40°08'36.586"N	104°37'27.114"W	0.40	
10418.00	90.680	0.690	6903.32	4093.32	4084.68	-306.42	40°08'37.495"N	104°37'27.102"W	0.28	
10510.00	89.600	359.840	6903.09	4185.24	4176.68	-305.99	40°08'38.404"N	104°37'27.097"W	1.49	



# Actual Wellpath Report

WEICHEL 1N-11HZ AWP

Page 5 of 8



## REFERENCE WELLPATH IDENTIFICATION

Operator	KERR-MCGEE OIL & GAS ONSHORE LP	Slot	SLOT#26 WEICHEL 1N-11HZ (466'FSL & 418'FEL, SEC.14)
Area	COLORADO	Well	WEICHEL 1N-11HZ
Field	WELD COUNTY (KERR MCGEE)	Wellbore	WEICHEL 1N-11HZ AWB
Facility	SEC.14-T2N-R65W		

## WELLPATH DATA (199 stations)

MD [ft]	Inclination [°]	Azimuth [°]	TVD [ft]	Vert Sect [ft]	North [ft]	East [ft]	Latitude	Longitude	DLS [°/100ft]	Comments
10602.00	90.490	0.730	6903.02	4277.15	4268.68	-305.53	40°08'39.313"N	104°37'27.091"W	1.37	
10694.00	87.660	359.370	6904.51	4369.06	4360.65	-305.45	40°08'40.222"N	104°37'27.090"W	3.41	
10786.00	88.950	358.640	6907.23	4461.00	4452.60	-307.05	40°08'41.131"N	104°37'27.110"W	1.61	
10877.00	88.890	357.850	6908.94	4551.98	4543.54	-309.83	40°08'42.029"N	104°37'27.146"W	0.87	
10968.00	90.180	358.940	6909.68	4642.97	4634.50	-312.38	40°08'42.928"N	104°37'27.179"W	1.86	
11060.00	90.580	358.530	6909.07	4734.95	4726.47	-314.41	40°08'43.837"N	104°37'27.205"W	0.62	
11152.00	91.170	358.730	6907.67	4826.93	4818.43	-316.61	40°08'44.746"N	104°37'27.233"W	0.68	
11244.00	90.760	359.540	6906.12	4918.90	4910.41	-318.00	40°08'45.655"N	104°37'27.251"W	0.99	
11336.00	91.570	358.580	6904.25	5010.86	5002.38	-319.51	40°08'46.563"N	104°37'27.271"W	1.37	
11428.00	91.130	0.070	6902.08	5102.80	5094.34	-320.59	40°08'47.472"N	104°37'27.285"W	1.69	
11519.00	90.180	0.100	6901.04	5193.72	5185.33	-320.46	40°08'48.371"N	104°37'27.283"W	1.04	
11611.00	90.580	359.820	6900.43	5285.66	5277.33	-320.52	40°08'49.281"N	104°37'27.284"W	0.53	
11696.00	90.730	0.510	6899.46	5370.58	5362.32	-320.28	40°08'50.121"N	104°37'27.281"W	0.83	
11782.00	89.630	0.930	6899.19	5456.47	5448.32	-319.20	40°08'50.970"N	104°37'27.267"W	1.37	
11867.00	88.920	359.280	6900.26	5541.39	5533.31	-319.04	40°08'51.810"N	104°37'27.265"W	2.11	
11952.00	89.130	359.490	6901.71	5626.35	5618.29	-319.95	40°08'52.650"N	104°37'27.277"W	0.35	
12037.00	89.100	359.400	6903.02	5711.31	5703.27	-320.78	40°08'53.490"N	104°37'27.287"W	0.11	
12123.00	88.740	359.870	6904.64	5797.25	5789.26	-321.33	40°08'54.340"N	104°37'27.294"W	0.69	
12208.00	89.590	358.900	6905.88	5882.21	5874.24	-322.24	40°08'55.179"N	104°37'27.306"W	1.52	
12293.00	91.380	358.990	6905.16	5967.18	5959.22	-323.80	40°08'56.019"N	104°37'27.326"W	2.11	
12378.00	91.780	359.420	6902.82	6052.13	6044.18	-324.98	40°08'56.859"N	104°37'27.341"W	0.69	
12463.00	92.020	359.220	6900.00	6137.05	6129.13	-325.99	40°08'57.698"N	104°37'27.354"W	0.37	
12549.00	90.560	358.040	6898.06	6223.02	6215.08	-328.05	40°08'58.547"N	104°37'27.381"W	2.18	
12634.00	89.750	359.430	6897.83	6308.01	6300.05	-329.92	40°08'59.387"N	104°37'27.405"W	1.89	
12719.00	89.930	358.860	6898.07	6392.98	6385.04	-331.19	40°09'00.227"N	104°37'27.421"W	0.70	
12804.00	90.090	359.950	6898.06	6477.95	6470.04	-332.07	40°09'01.067"N	104°37'27.433"W	1.30	
12890.00	90.430	0.560	6897.67	6563.87	6556.03	-331.69	40°09'01.917"N	104°37'27.428"W	0.81	
12975.00	90.300	359.650	6897.12	6648.80	6641.03	-331.53	40°09'02.757"N	104°37'27.426"W	1.08	
13060.00	90.270	0.870	6896.70	6733.73	6726.03	-331.15	40°09'03.597"N	104°37'27.421"W	1.44	
13145.00	89.840	0.790	6896.62	6818.61	6811.02	-329.92	40°09'04.437"N	104°37'27.405"W	0.51	
13230.00	88.670	359.240	6897.72	6903.54	6896.01	-329.90	40°09'05.276"N	104°37'27.405"W	2.28	
13315.00	88.610	0.230	6899.74	6988.47	6980.98	-330.29	40°09'06.116"N	104°37'27.410"W	1.17	
13400.00	89.160	359.330	6901.40	7073.40	7065.96	-330.61	40°09'06.956"N	104°37'27.414"W	1.24	
13486.00	89.910	358.460	6902.09	7159.38	7151.94	-332.27	40°09'07.806"N	104°37'27.436"W	1.34	
13571.00	90.250	358.690	6901.98	7244.37	7236.92	-334.39	40°09'08.645"N	104°37'27.463"W	0.48	
13656.00	90.400	358.660	6901.49	7329.36	7321.89	-336.35	40°09'09.485"N	104°37'27.488"W	0.18	
13742.00	90.490	359.020	6900.83	7415.35	7407.87	-338.09	40°09'10.335"N	104°37'27.511"W	0.43	
13827.00	90.640	359.520	6899.99	7500.32	7492.86	-339.18	40°09'11.175"N	104°37'27.524"W	0.61	
13912.00	90.670	0.080	6899.02	7585.26	7577.85	-339.47	40°09'12.015"N	104°37'27.528"W	0.66	
13997.00	91.100	359.590	6897.70	7670.20	7662.84	-339.72	40°09'12.854"N	104°37'27.531"W	0.77	
14083.00	91.720	0.220	6895.59	7756.12	7748.82	-339.86	40°09'13.704"N	104°37'27.533"W	1.03	
14168.00	90.210	359.970	6894.16	7841.04	7833.80	-339.72	40°09'14.544"N	104°37'27.532"W	1.80	
14253.00	91.040	0.060	6893.23	7925.97	7918.80	-339.70	40°09'15.384"N	104°37'27.531"W	0.98	
14338.00	90.060	359.320	6892.41	8010.92	8003.79	-340.16	40°09'16.224"N	104°37'27.537"W	1.44	
14424.00	90.210	359.660	6892.21	8096.88	8089.79	-340.92	40°09'17.073"N	104°37'27.547"W	0.43	



# Actual Wellpath Report

WEICHEL 1N-11HZ AWP

Page 6 of 8



## REFERENCE WELLPATH IDENTIFICATION

Operator	KERR-MCGEE OIL & GAS ONSHORE LP	Slot	SLOT#26 WEICHEL 1N-11HZ (466'FSL & 418'FEL, SEC.14)
Area	COLORADO	Well	WEICHEL 1N-11HZ
Field	WELD COUNTY (KERR MCGEE)	Wellbore	WEICHEL 1N-11HZ AWB
Facility	SEC.14-T2N-R65W		

## WELLPATH DATA (199 stations)

MD [ft]	Inclination [°]	Azimuth [°]	TVD [ft]	Vert Sect [ft]	North [ft]	East [ft]	Latitude	Longitude	DLS [°/100ft]	Comments
14509.00	89.440	359.020	6892.47	8181.85	8174.78	-341.90	40°09'17.913"N	104°37'27.560"W	1.18	
14594.00	89.450	359.020	6893.29	8266.83	8259.76	-343.36	40°09'18.753"N	104°37'27.578"W	0.01	
14679.00	89.480	358.900	6894.09	8351.81	8344.74	-344.90	40°09'19.593"N	104°37'27.598"W	0.15	
14765.00	89.660	359.030	6894.73	8437.79	8430.73	-346.45	40°09'20.443"N	104°37'27.618"W	0.26	
14850.00	89.720	359.300	6895.19	8522.77	8515.72	-347.69	40°09'21.283"N	104°37'27.634"W	0.33	
14935.00	90.000	359.630	6895.40	8607.74	8600.71	-348.48	40°09'22.123"N	104°37'27.645"W	0.51	
15021.00	89.930	0.300	6895.45	8693.68	8686.71	-348.54	40°09'22.972"N	104°37'27.645"W	0.78	
15106.00	90.060	0.320	6895.46	8778.60	8771.71	-348.08	40°09'23.812"N	104°37'27.639"W	0.15	
15191.00	90.370	359.960	6895.14	8863.53	8856.71	-347.87	40°09'24.652"N	104°37'27.637"W	0.56	
15276.00	89.780	358.720	6895.03	8948.50	8941.70	-348.85	40°09'25.492"N	104°37'27.649"W	1.62	
15361.00	90.000	358.660	6895.19	9033.49	9026.68	-350.79	40°09'26.332"N	104°37'27.674"W	0.27	
15447.00	90.330	358.800	6894.94	9119.48	9112.66	-352.70	40°09'27.182"N	104°37'27.699"W	0.42	
15532.00	90.800	358.490	6894.11	9204.46	9197.63	-354.71	40°09'28.021"N	104°37'27.725"W	0.66	
15617.00	91.320	358.900	6892.53	9289.44	9282.59	-356.64	40°09'28.861"N	104°37'27.750"W	0.78	
15702.00	91.290	359.370	6890.60	9374.40	9367.56	-357.93	40°09'29.701"N	104°37'27.766"W	0.55	
15787.00	91.720	359.350	6888.37	9459.34	9452.53	-358.87	40°09'30.540"N	104°37'27.779"W	0.51	
15873.00	92.120	358.570	6885.48	9545.27	9538.46	-360.43	40°09'31.389"N	104°37'27.799"W	1.02	
15938.00	92.190	358.310	6883.04	9610.22	9603.39	-362.20	40°09'32.031"N	104°37'27.821"W	0.41	Last BHI MWD Survey
16006.00	92.190	358.310	6880.44	9678.17	9671.31	-364.21	40°09'32.702"N	104°37'27.847"W	0.00	Projection to Bit

## HOLE & CASING SECTIONS - Ref Wellbore: WEICHEL 1N-11HZ AWB Ref Wellpath: WEICHEL 1N-11HZ AWP

String/Diameter	Start MD [ft]	End MD [ft]	Interval [ft]	Start TVD [ft]	End TVD [ft]	Start N/S [ft]	Start E/W [ft]	End N/S [ft]	End E/W [ft]
12.25in Open Hole	16.00	930.00	914.00	16.00	929.99	0.00	0.00	1.82	2.27
9.625in Casing Surface	16.00	930.00	914.00	16.00	929.99	0.00	0.00	1.82	2.27
8.75in Open Hole	930.00	7302.00	6372.00	929.99	6911.85	1.82	2.27	969.31	-282.12
7in Casing Intermediate	16.00	7292.00	7276.00	16.00	6911.31	0.00	0.00	959.34	-281.60
6.125in Open Hole	7292.00	16006.00	8714.00	6911.31	6880.44	959.34	-281.60	9671.31	-364.21





# Actual Wellpath Report

WEICHEL 1N-11HZ AWP

Page 7 of 8



## REFERENCE WELLPATH IDENTIFICATION

Operator	KERR-MCGEE OIL & GAS ONSHORE LP	Slot	SLOT#26 WEICHEL 1N-11HZ (466'FSL & 418'FEL, SEC.14)
Area	COLORADO	Well	WEICHEL 1N-11HZ
Field	WELD COUNTY (KERR MCGEE)	Wellbore	WEICHEL 1N-11HZ AWB
Facility	SEC.14-T2N-R65W		

## TARGETS

Name	MD [ft]	TVD [ft]	North [ft]	East [ft]	Grid East [US ft]	Grid North [US ft]	Latitude	Longitude	Shape
WEICHEL 3 PAD SECTION 11 LINES		0.00	60.11	-3.91	3245181.02	1292398.97	40°07'57.724"N	104°37'23.207"W	polygon
WEICHEL 3 PAD SECTION 14 LINES		0.00	60.11	-3.91	3245181.02	1292398.97	40°07'57.724"N	104°37'23.207"W	polygon
WEICHEL 3 PAD SECTION 23 LINES		0.00	60.11	-3.91	3245181.02	1292398.97	40°07'57.724"N	104°37'23.207"W	polygon
WEICHEL 1N-11HZ BHL (460'FNL & 853'FEL, SEC.11) REV-2		6890.00	9696.79	-352.46	3244737.22	1302031.32	40°09'32.954"N	104°37'27.696"W	point
WEICHEL 1N-11HZ BHL ON PLAT (460'FNL & 803'FEL, SEC.11) REV-1		6890.00	9696.79	-302.46	3244787.21	1302031.82	<b>40°09'32.954"N</b>	<b>104°37'27.052"W</b>	point
WEICHEL 3 PAD HARDLINES (460' SETBACKS)		7200.00	60.11	-3.91	3245181.02	1292398.97	40°07'57.724"N	104°37'23.207"W	polygon
WEICHEL 3 PAD SEC.23 HARDLINES (460' SETBACKS)		7200.00	60.11	-3.91	3245181.02	1292398.97	40°07'57.724"N	104°37'23.207"W	polygon

## WELLPATH COMPOSITION - Ref Wellbore: WEICHEL 1N-11HZ AWB Ref Wellpath: WEICHEL 1N-11HZ AWP

Start MD [ft]	End MD [ft]	Positional Uncertainty Model	Log Name/Comment	Wellbore
16.00	886.00	Generic gyro - continuous (Standard)	GYRODATA SURVEYS <116-886>	WEICHEL 1N-11HZ AWB
886.00	7246.00	NaviTrak (MAGCORR,IFR)	BHI MWD SURVEYS 8 3/4" HOLE <976-7246>	WEICHEL 1N-11HZ AWB
7246.00	15938.00	OnTrak (IFR)_1	BHI MWD SURVEYS 6 1/8" HOLE <7330-15938>	WEICHEL 1N-11HZ AWB
15938.00	16006.00	Blind Drilling (std)	Projection to bit	WEICHEL 1N-11HZ AWB





# Actual Wellpath Report

WEICHEL 1N-11HZ AWP

Page 8 of 8



## REFERENCE WELLPATH IDENTIFICATION

Operator	KERR-MCGEE OIL & GAS ONSHORE LP	Slot	SLOT#26 WEICHEL 1N-11HZ (466'FSL & 418'FEL, SEC.14)
Area	COLORADO	Well	WEICHEL 1N-11HZ
Field	WELD COUNTY (KERR MCGEE)	Wellbore	WEICHEL 1N-11HZ AWB
Facility	SEC.14-T2N-R65W		

## WELLPATH COMMENTS

MD [ft]	Inclination [°]	Azimuth [°]	TVD [ft]	Comment
16.00	0.000	48.960	16.00	Tie-On
116.00	0.300	48.960	116.00	Begin GYRO Surveys
886.00	0.050	334.170	885.99	Tie-Into GYRO Surveys
976.00	0.340	153.860	975.99	Begin BHI MWD Surveys
7292.00	86.764	357.106	6911.31	7" Casing Point
15938.00	92.190	358.310	6883.04	Last BHI MWD Survey
16006.00	92.190	358.310	6880.44	Projection to Bit