
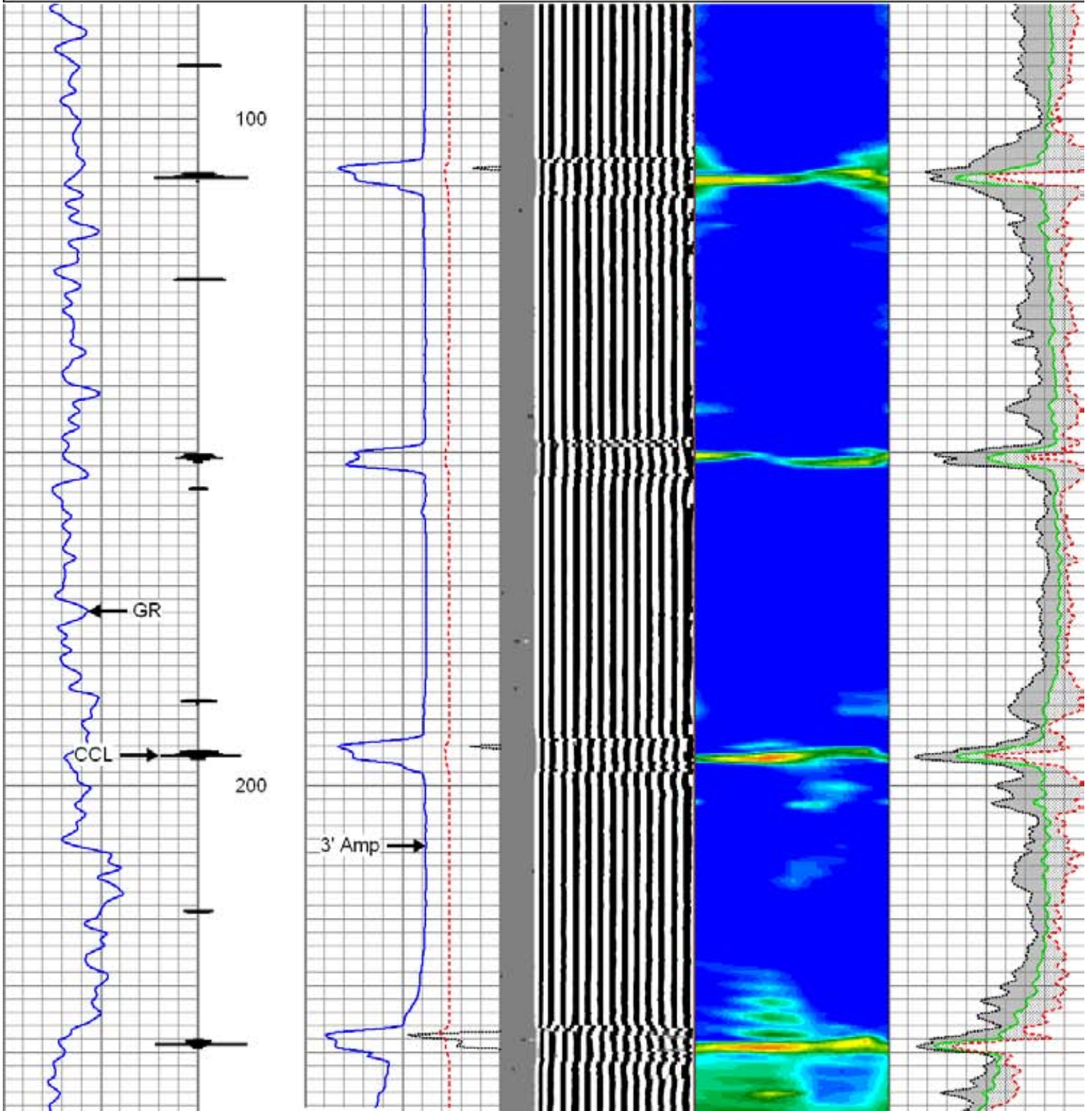
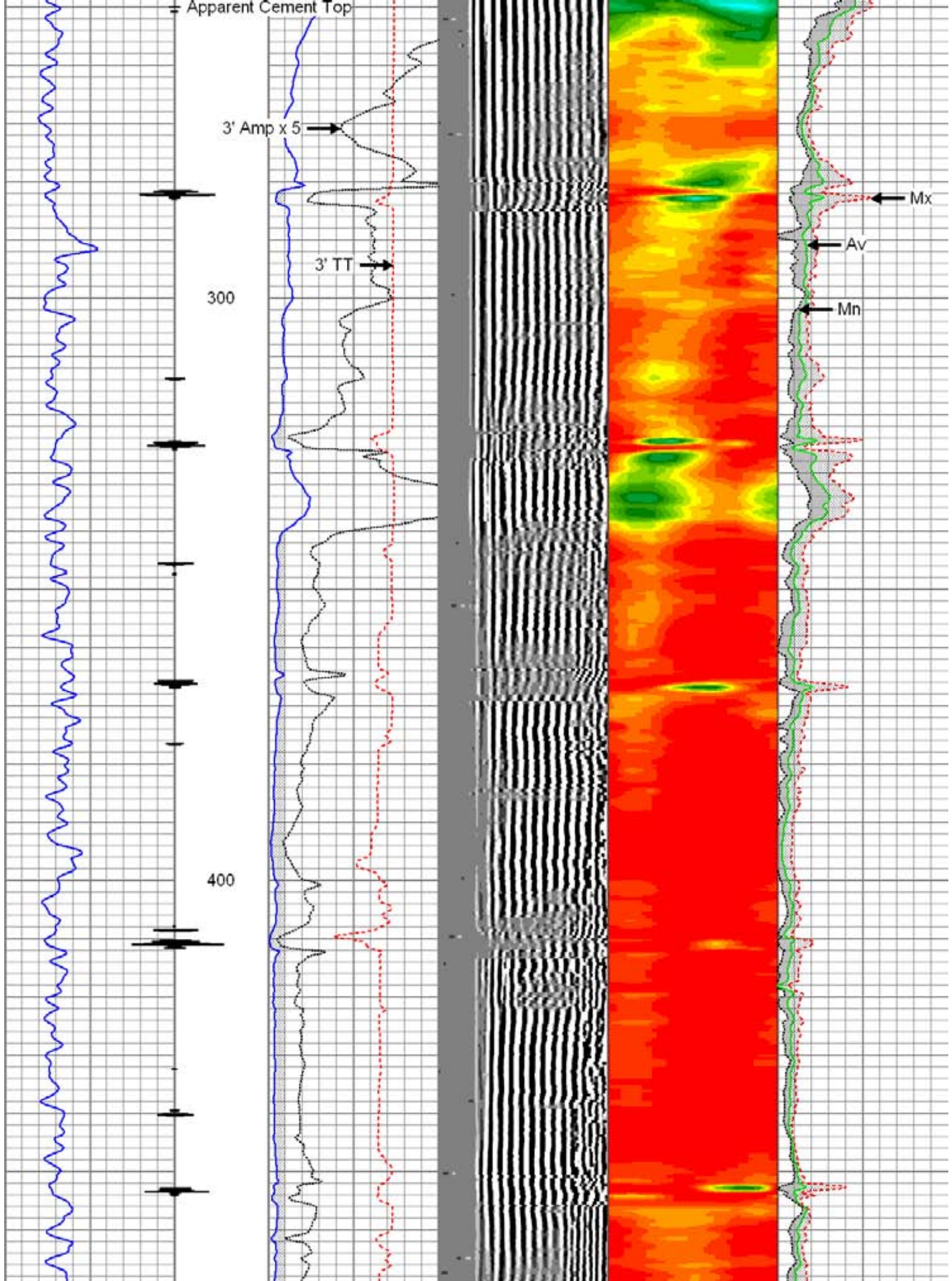


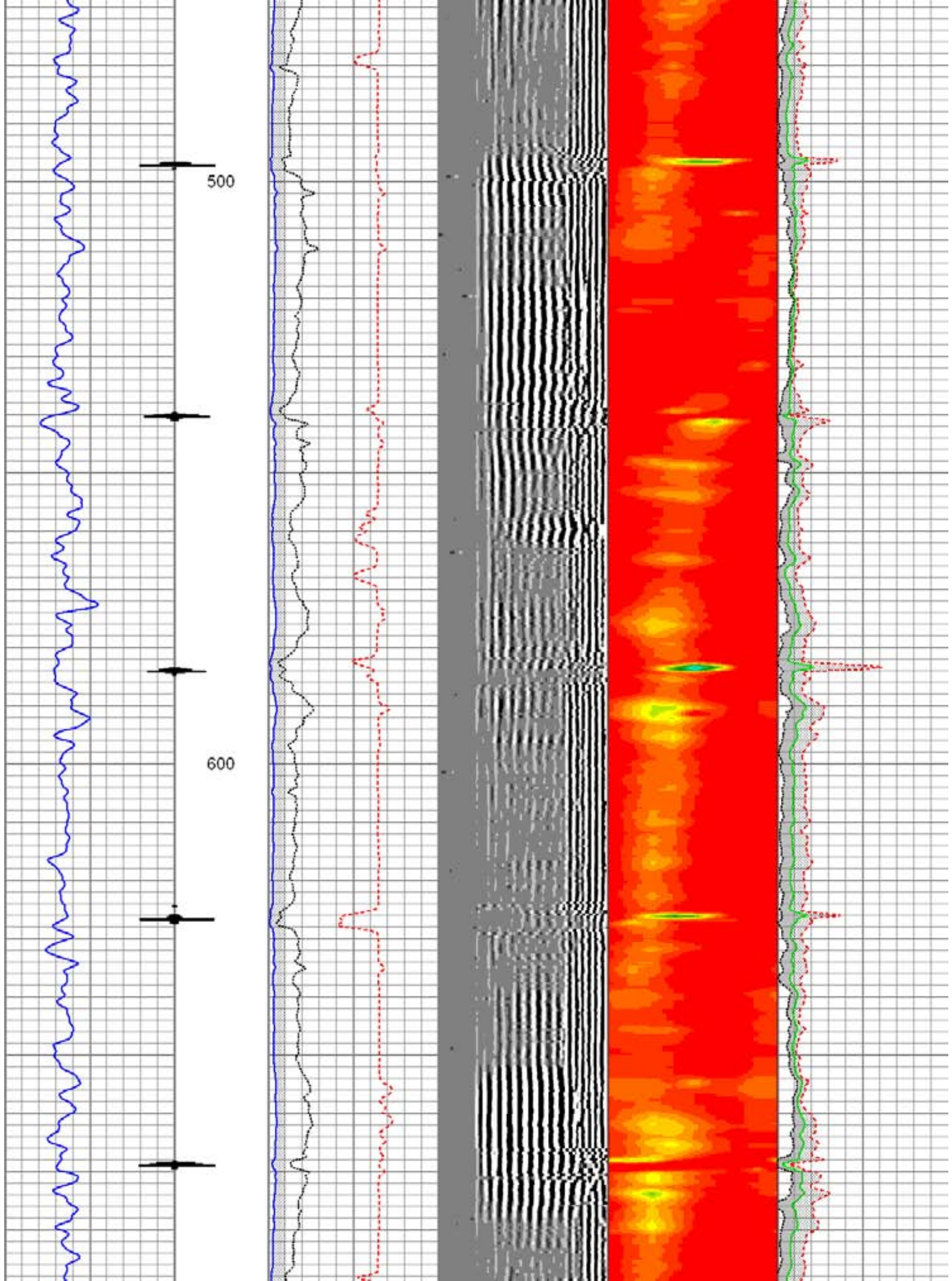


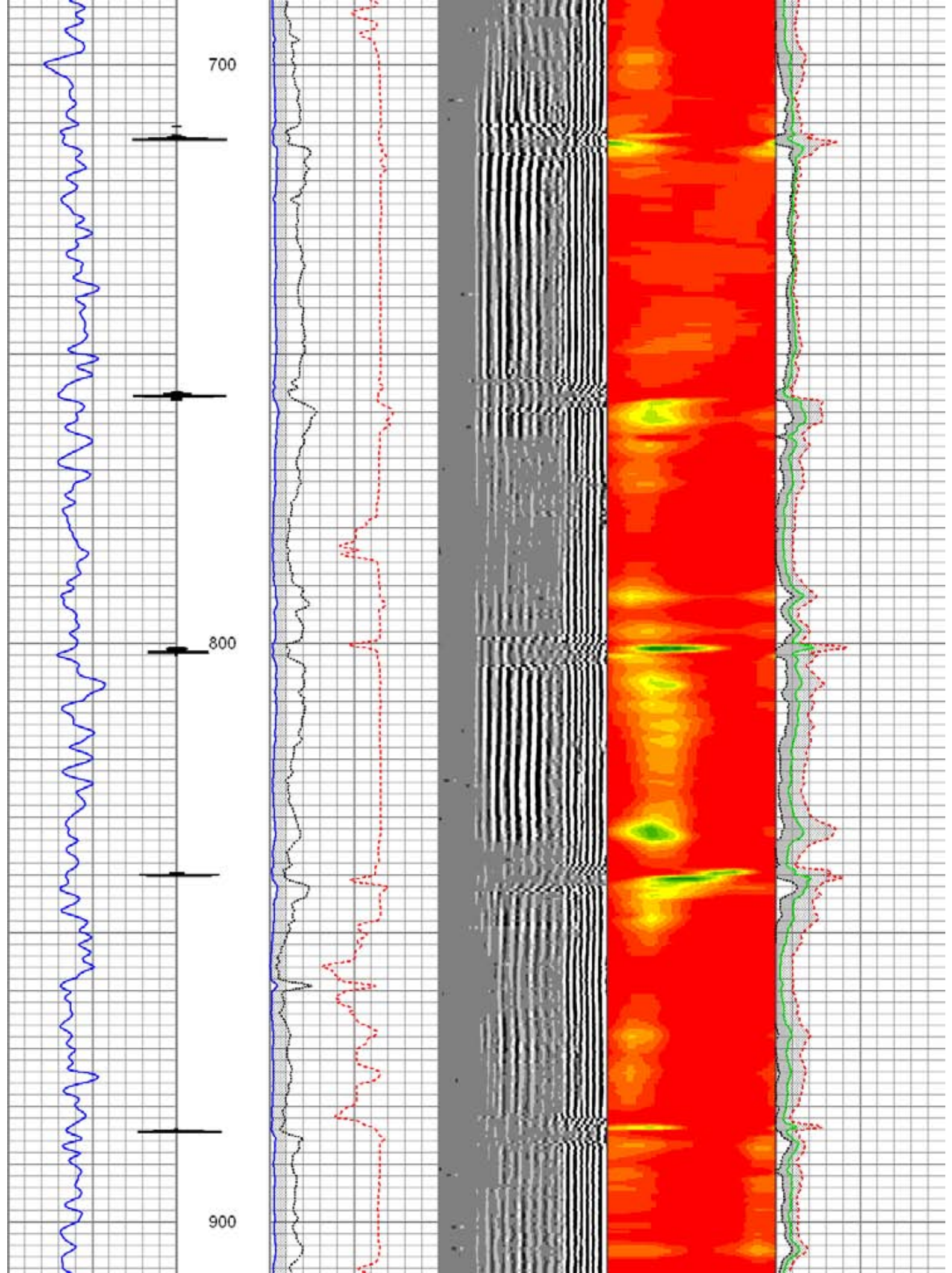
Database File: c:\07-19-12\_whiting\_wolf\_35-2613h.db  
 Dataset Pathname: 19jul12/wolf\_35-2/cbl/pass5  
 Presentation Format: rib usa  
 Dataset Creation: Thu Jul 19 11:45:30 2012 by Log SCH 111116  
 Charted by: Depth in Feet scaled 1:240

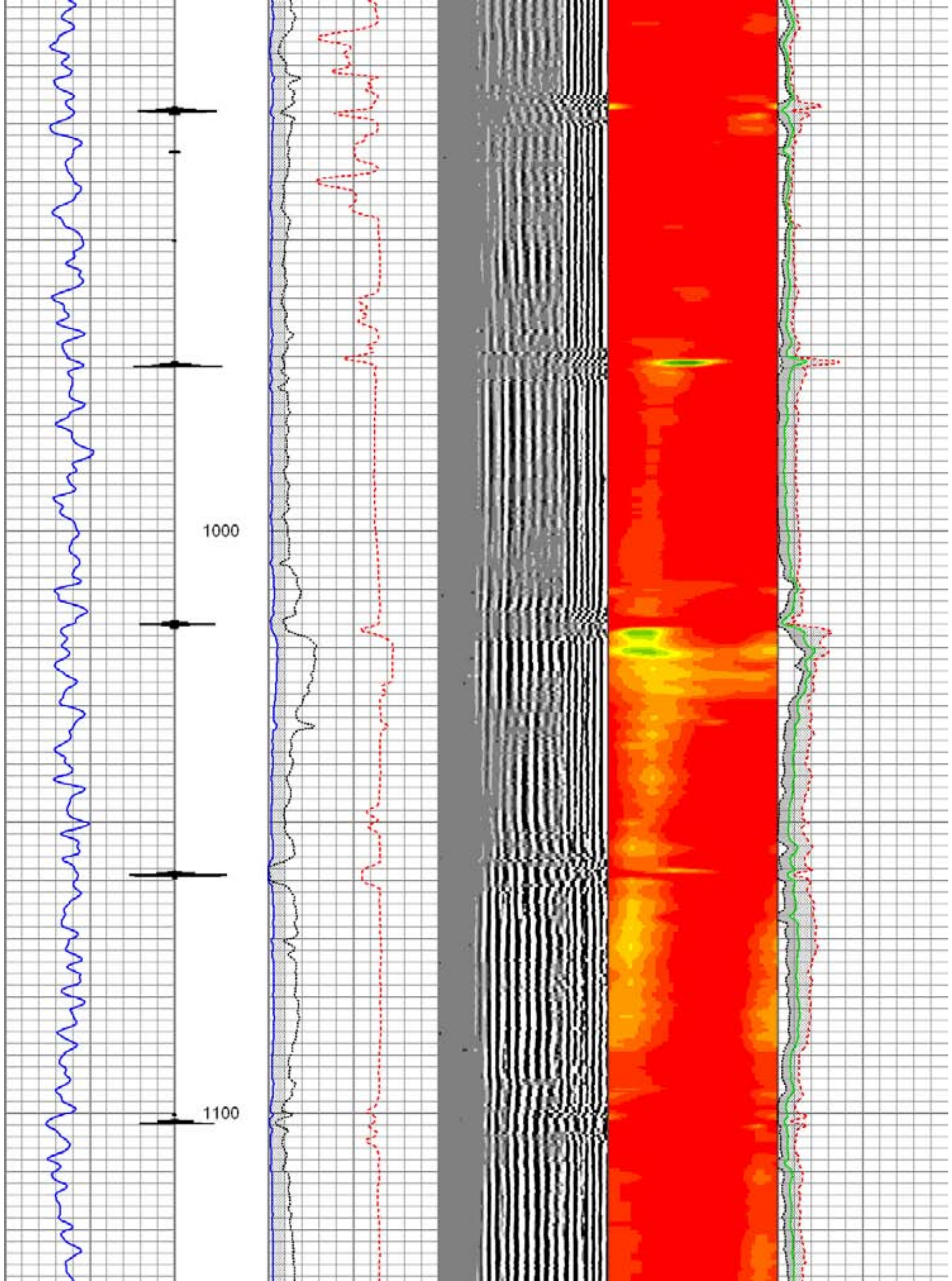
0	Gamma Ray 150	3' Amplitude	5' Variable Density Log	Sector Map	Average Amplitude
	Collar Locator	0 (mV) 100	200 1200	10 70	0 100
		3' Amplitude x 5			Minimum Amplitude
		0 (mV) 20			0 100
		3' Travel Time			Maximum Amplitude
		650 (usec) 150			0 100

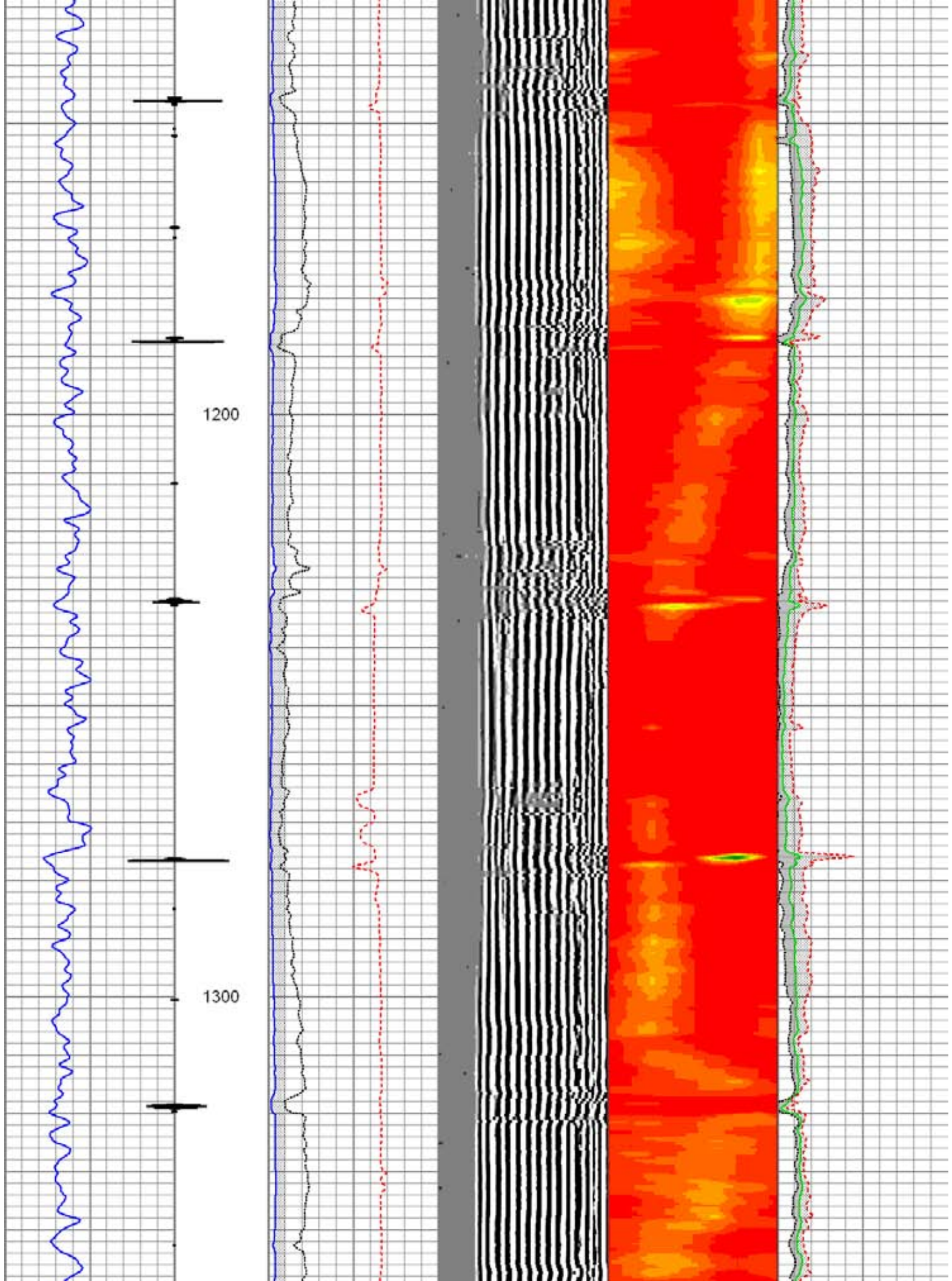


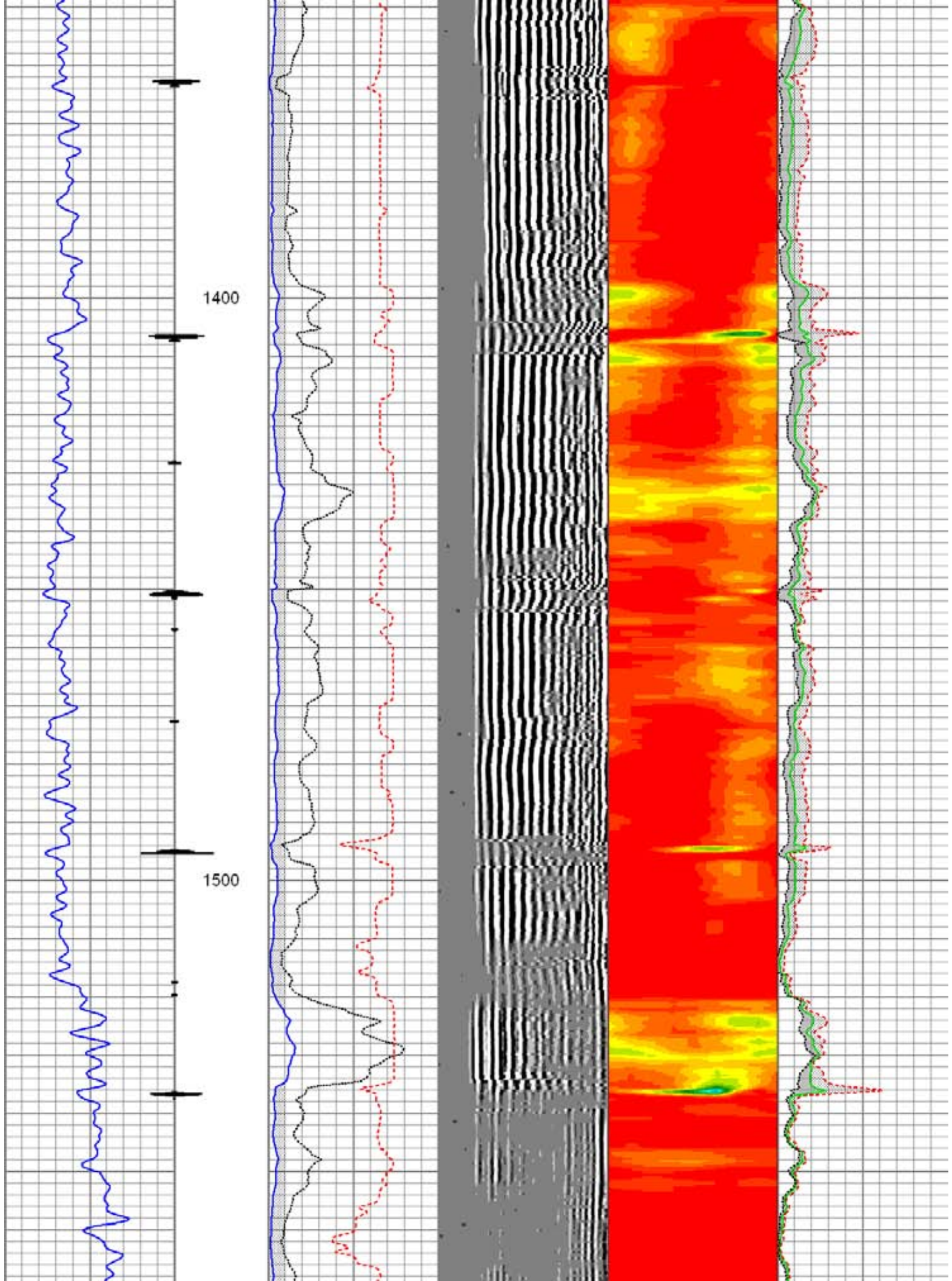


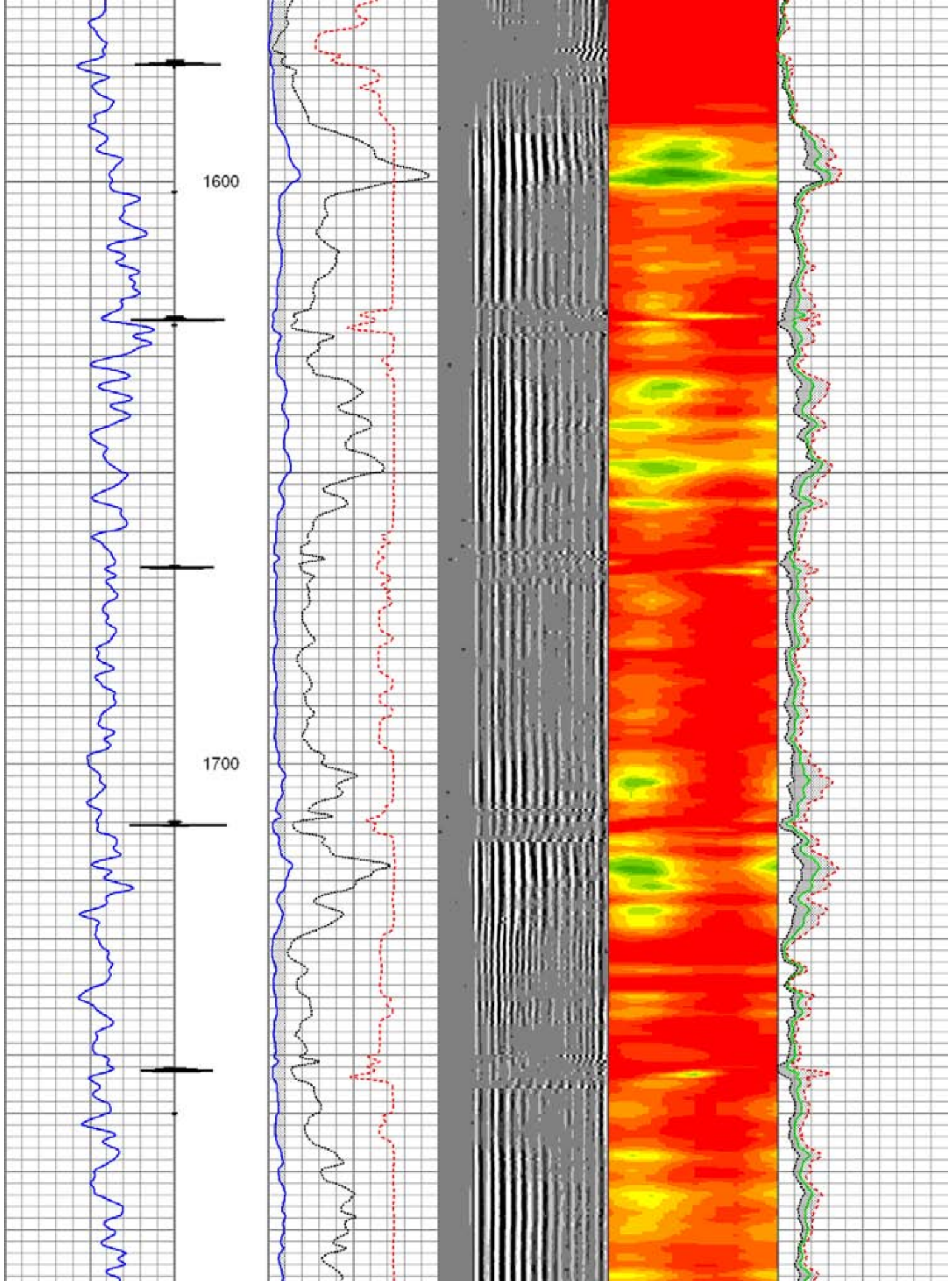


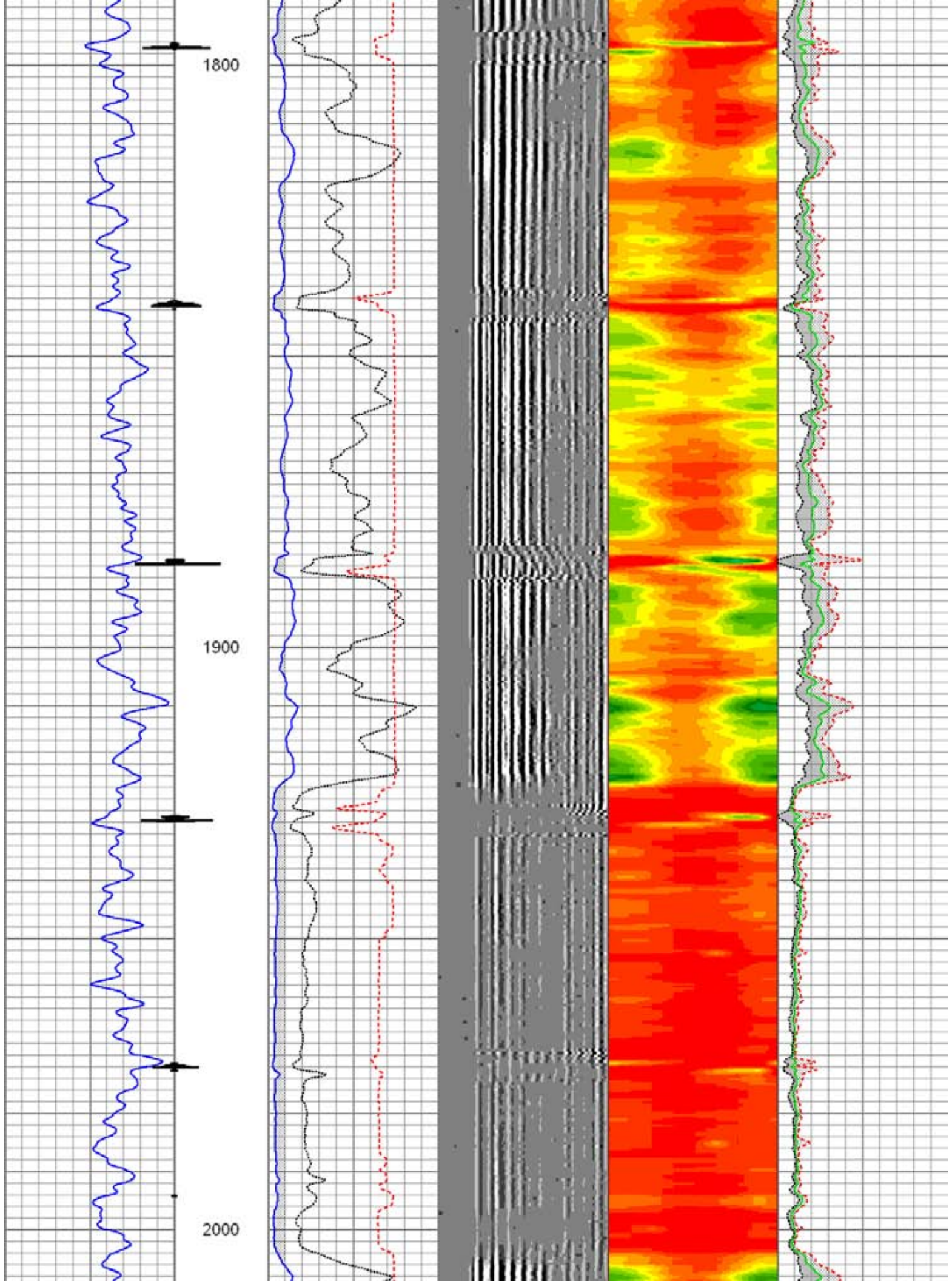


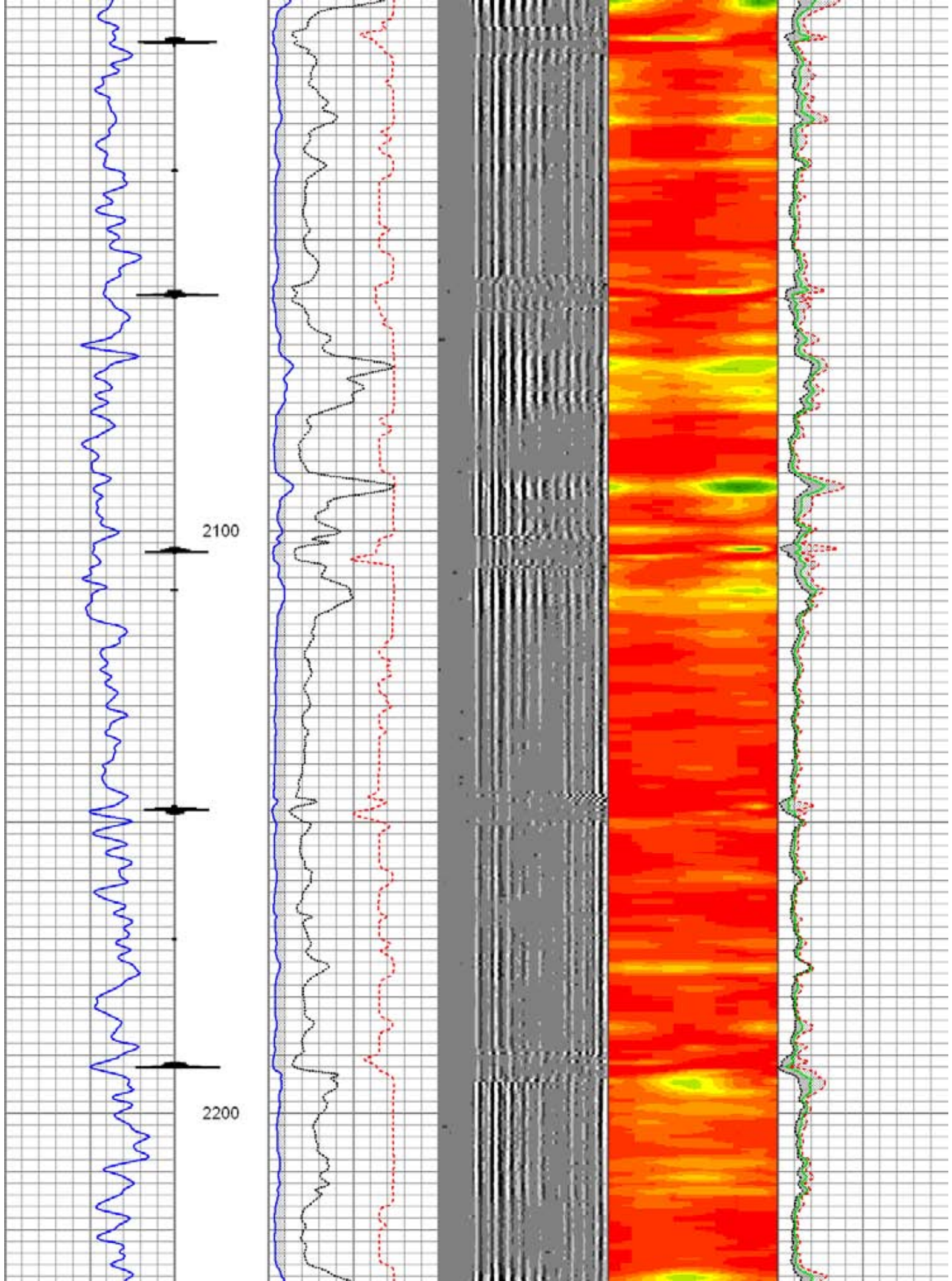


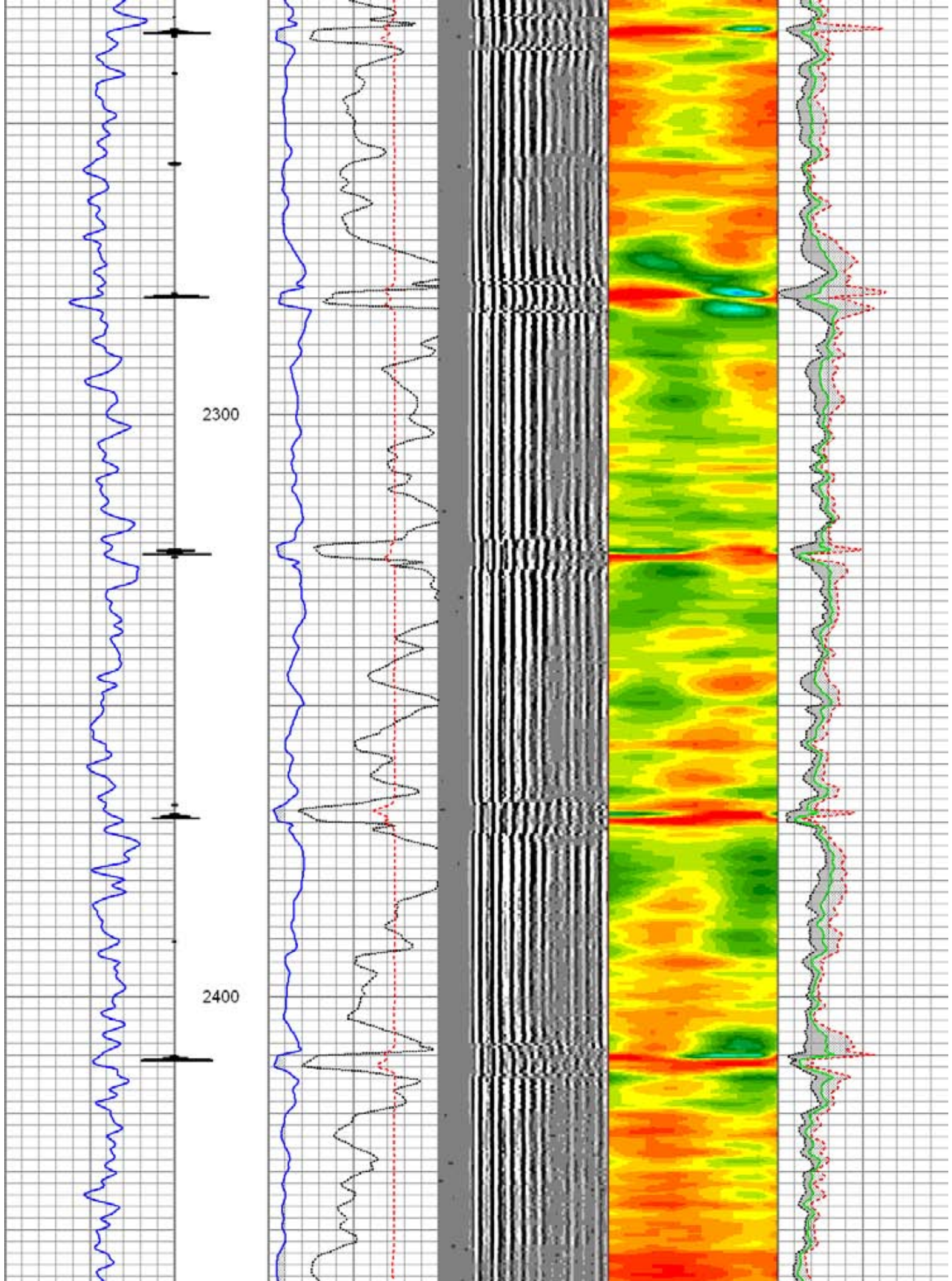


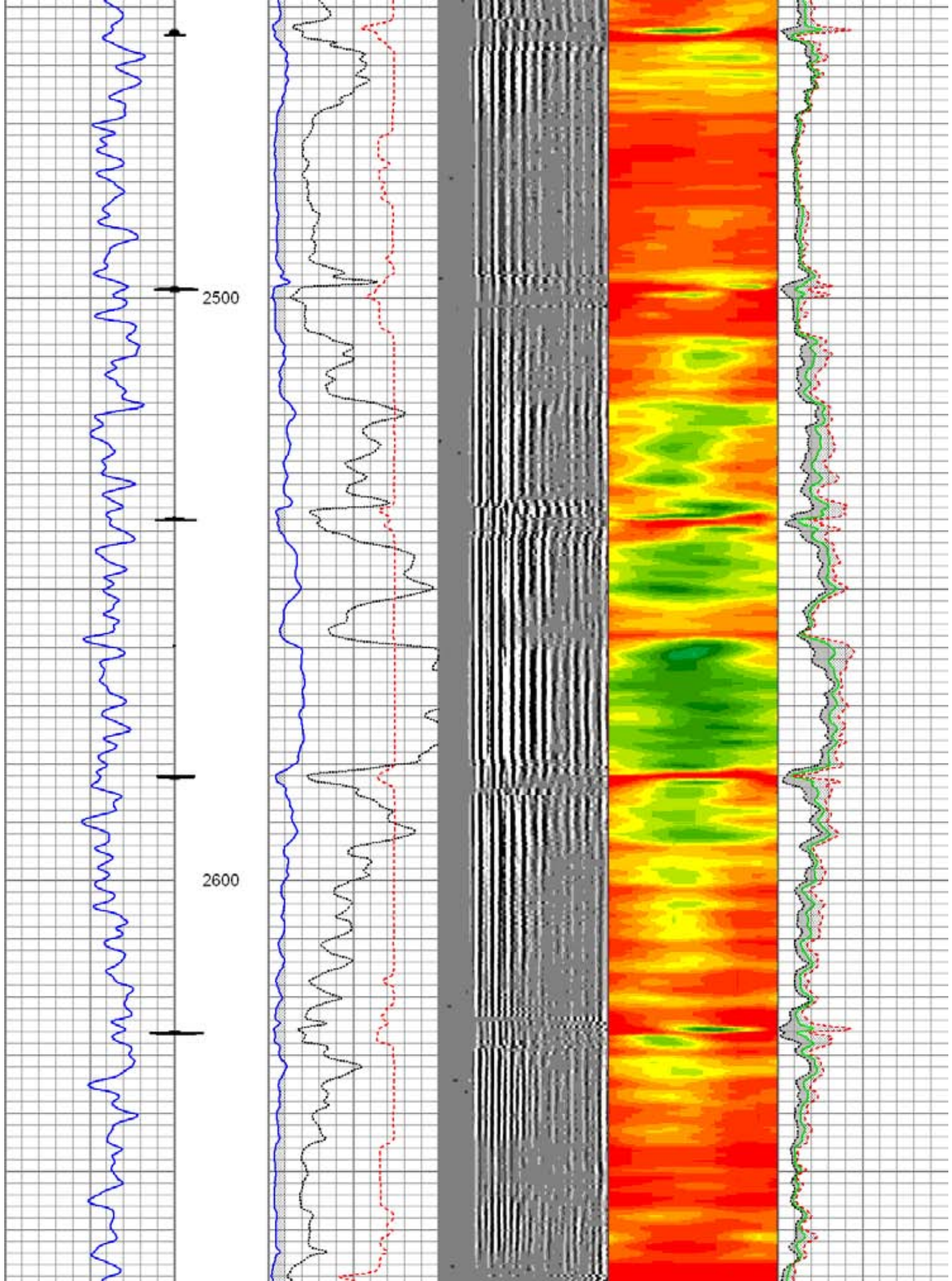










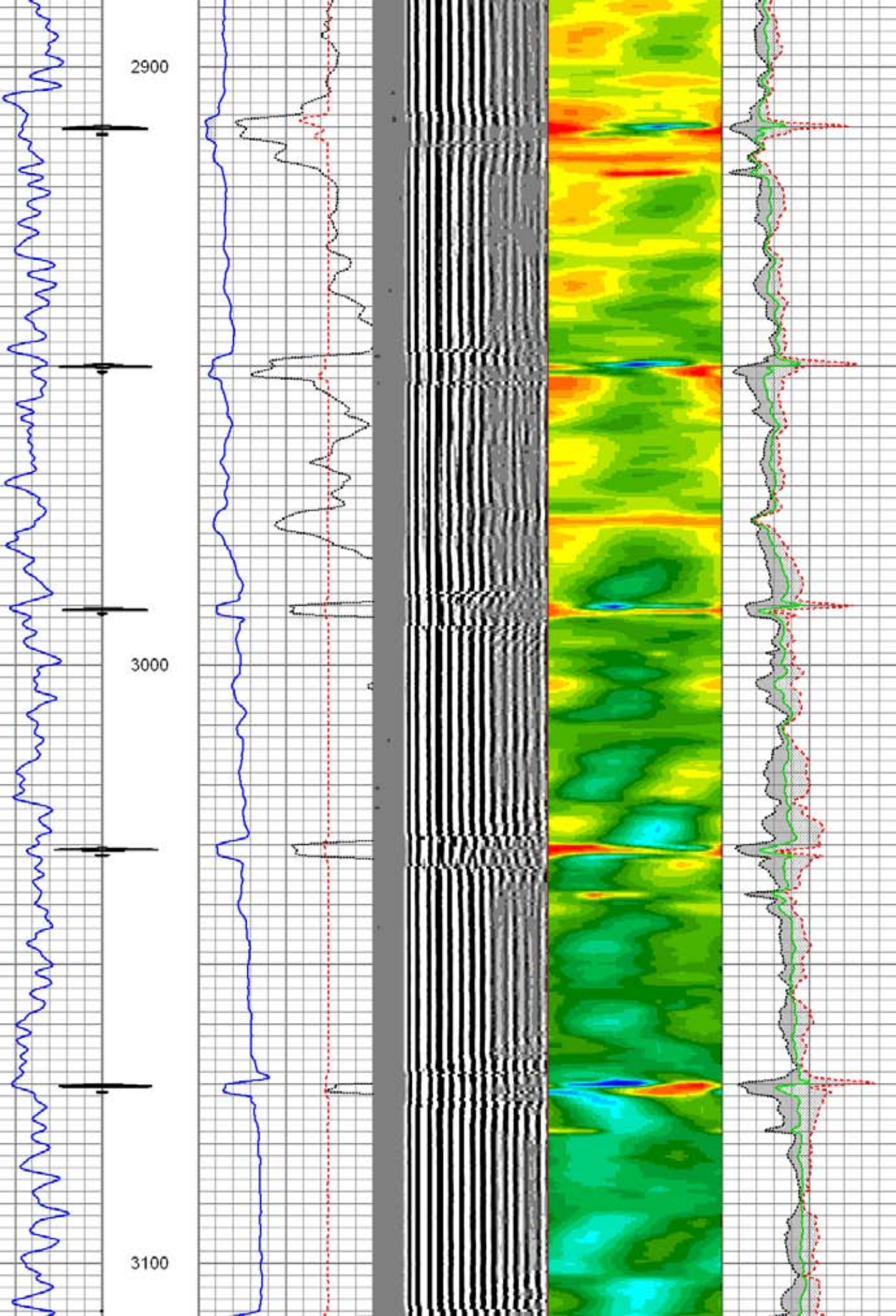


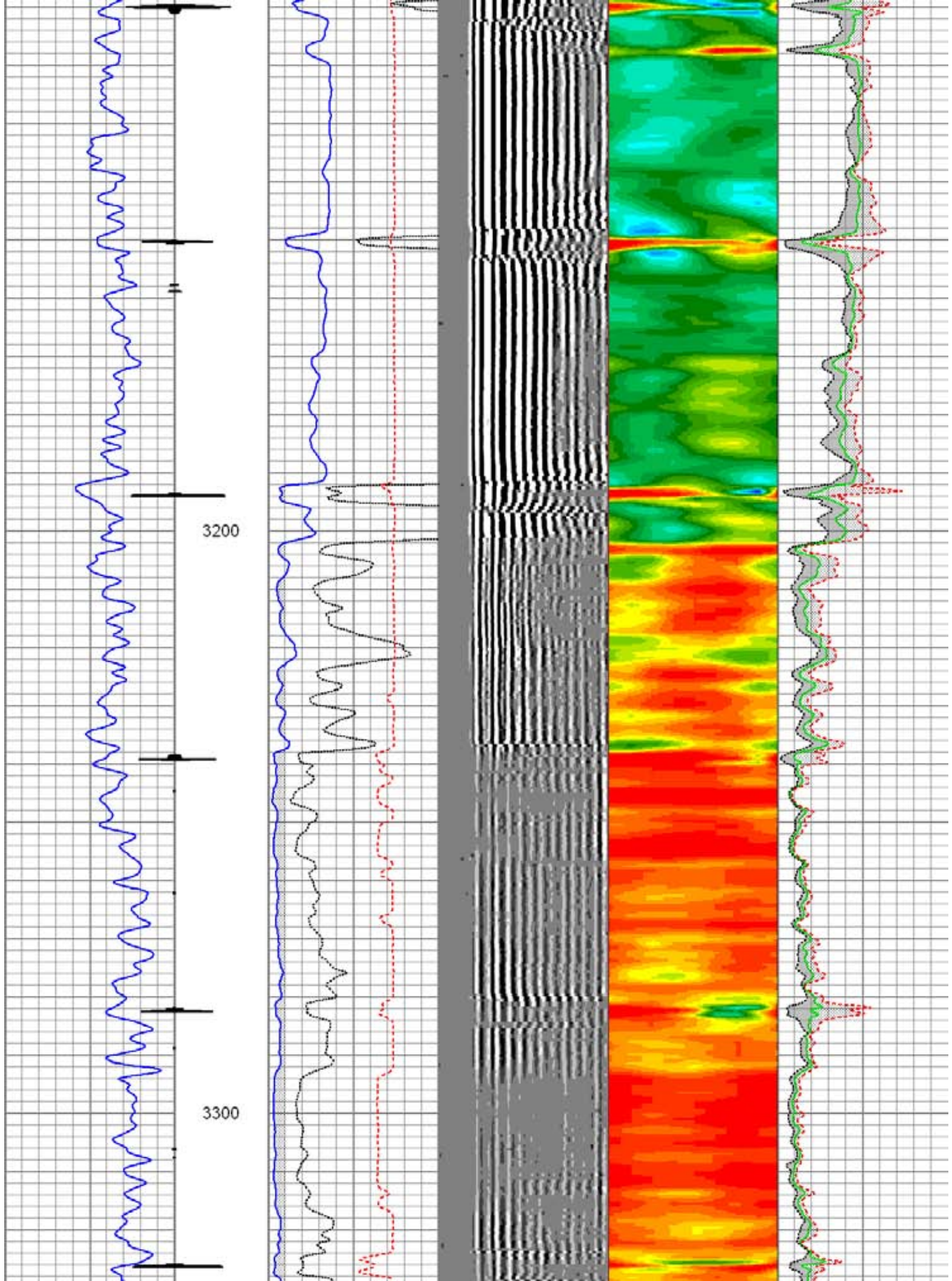


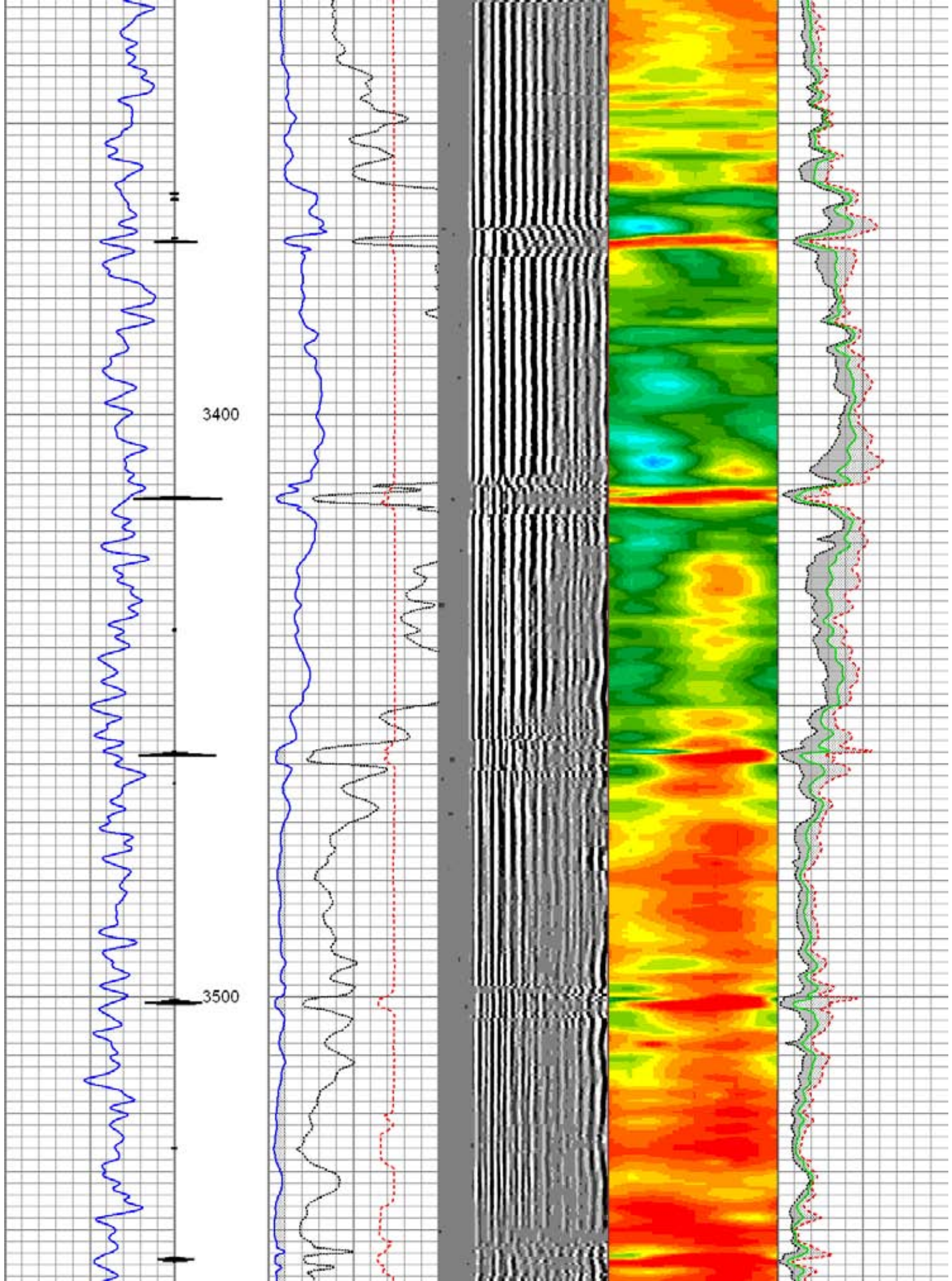
2900

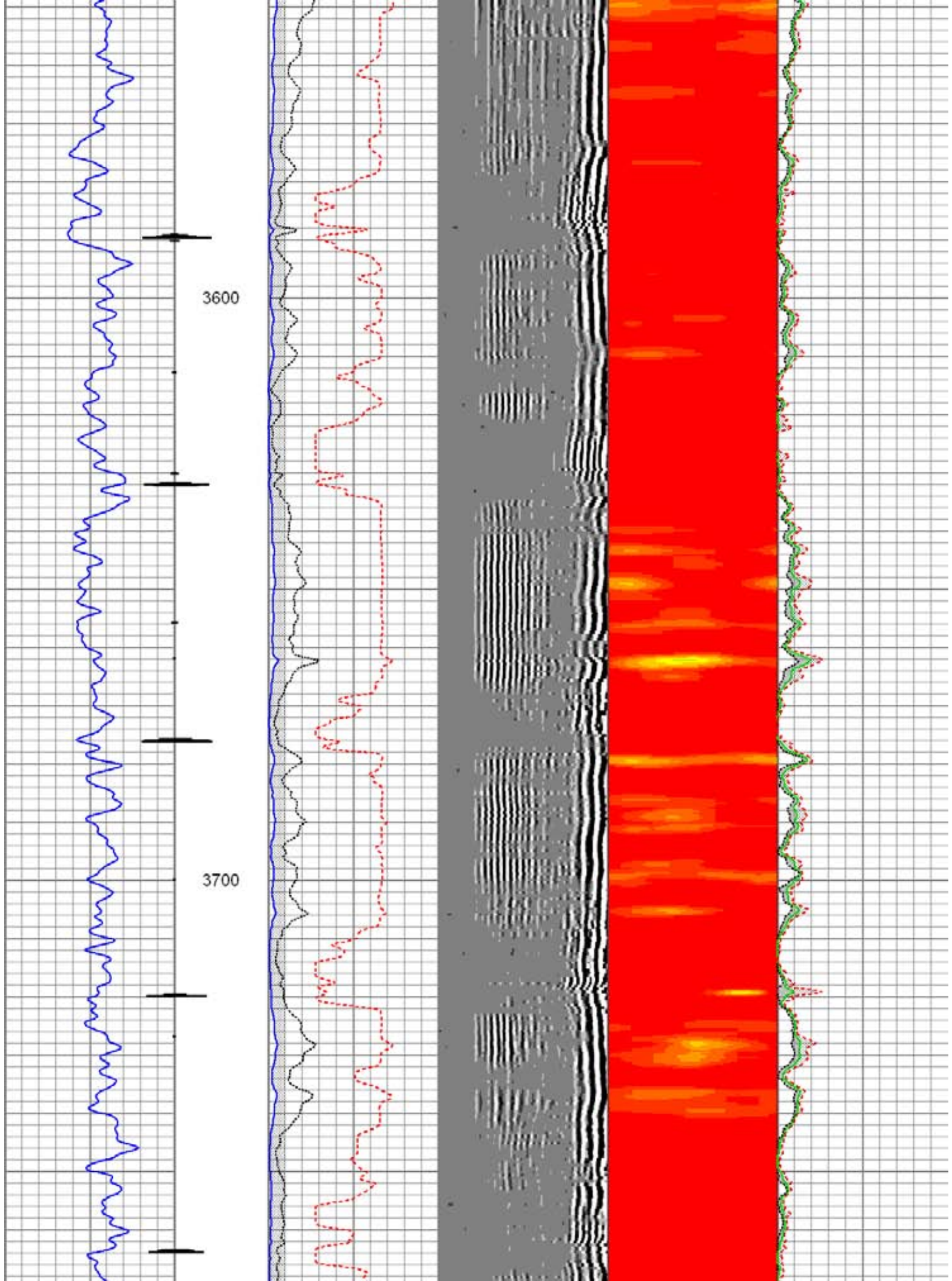
3000

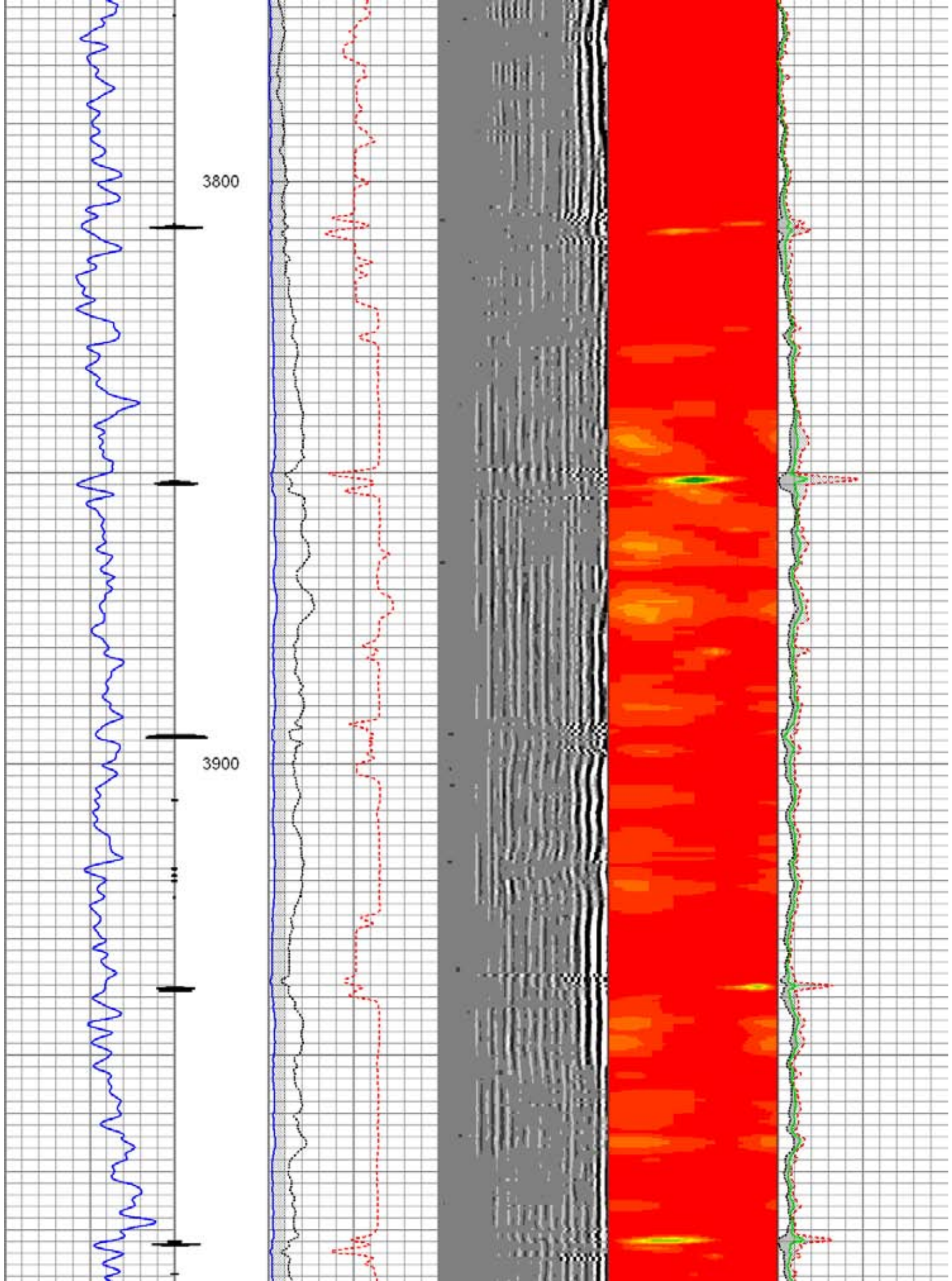
3100

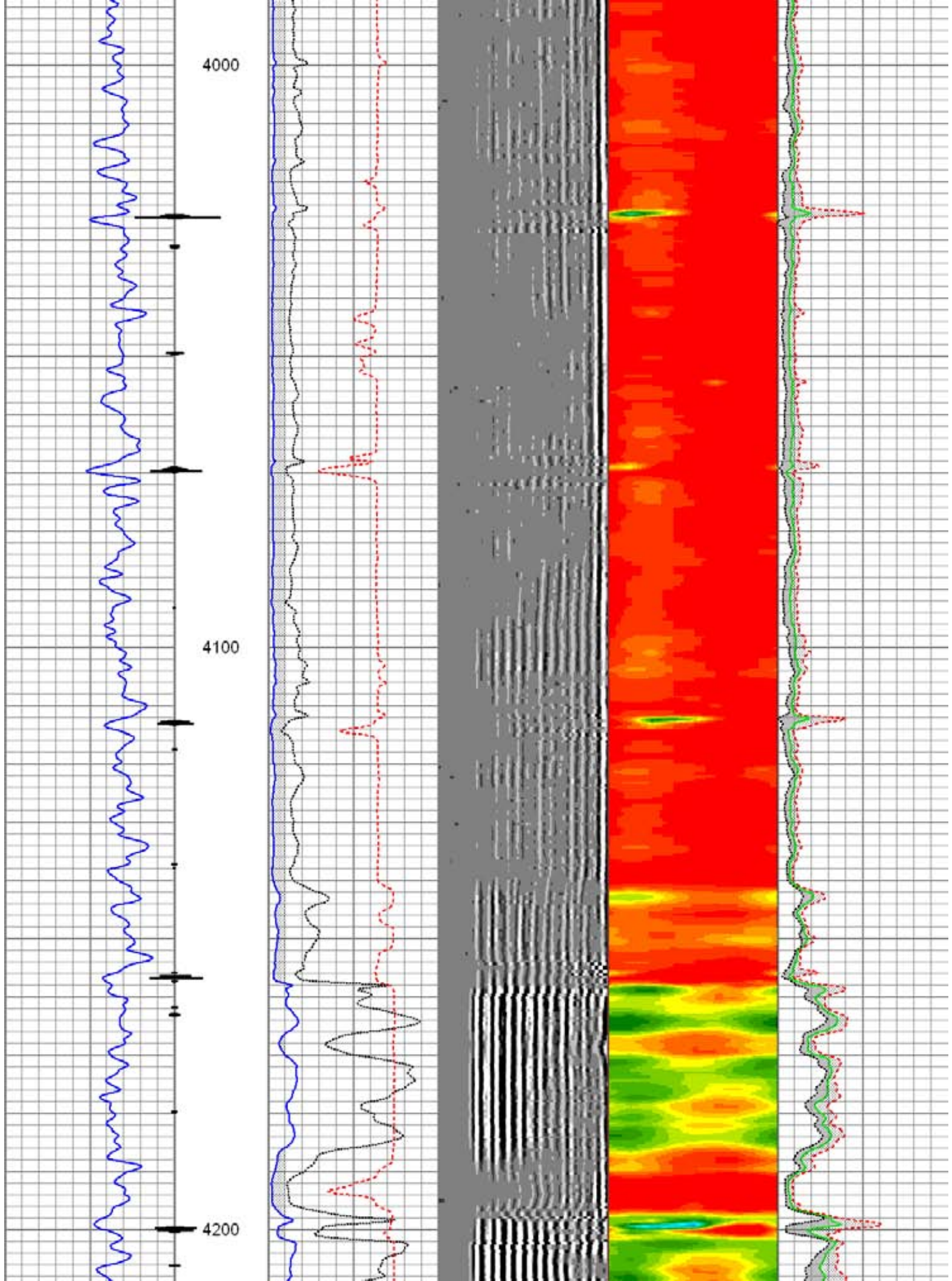


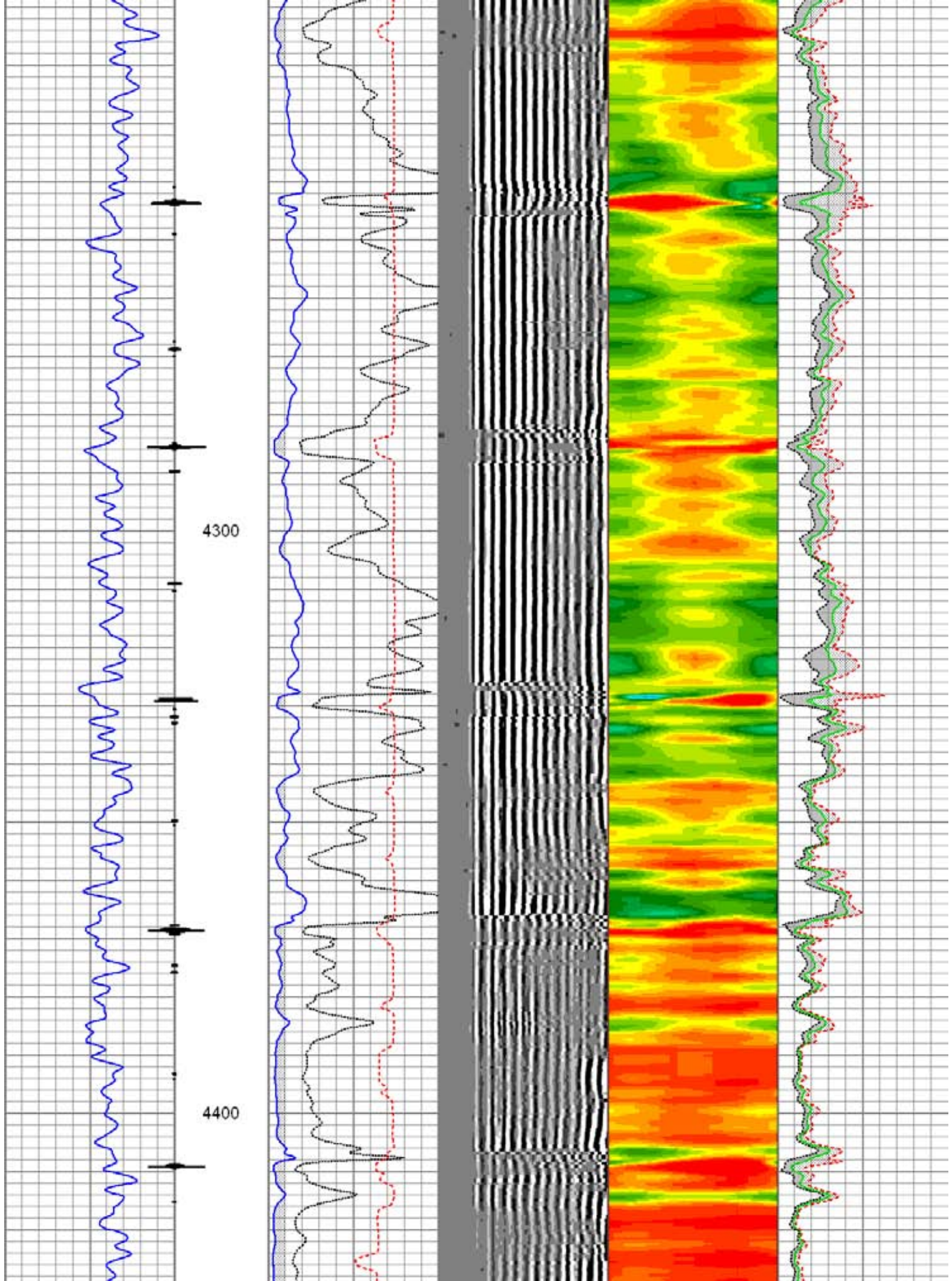


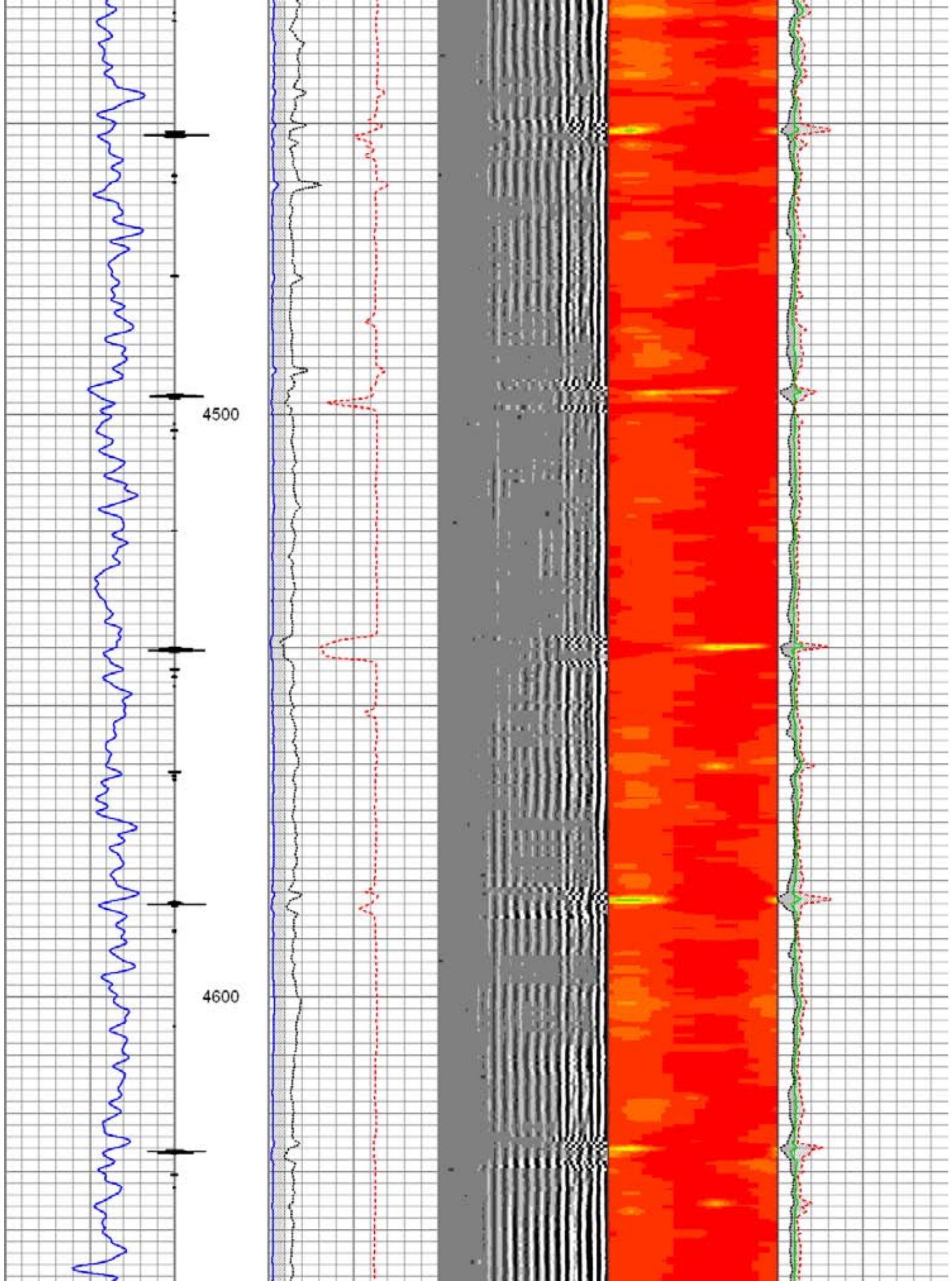


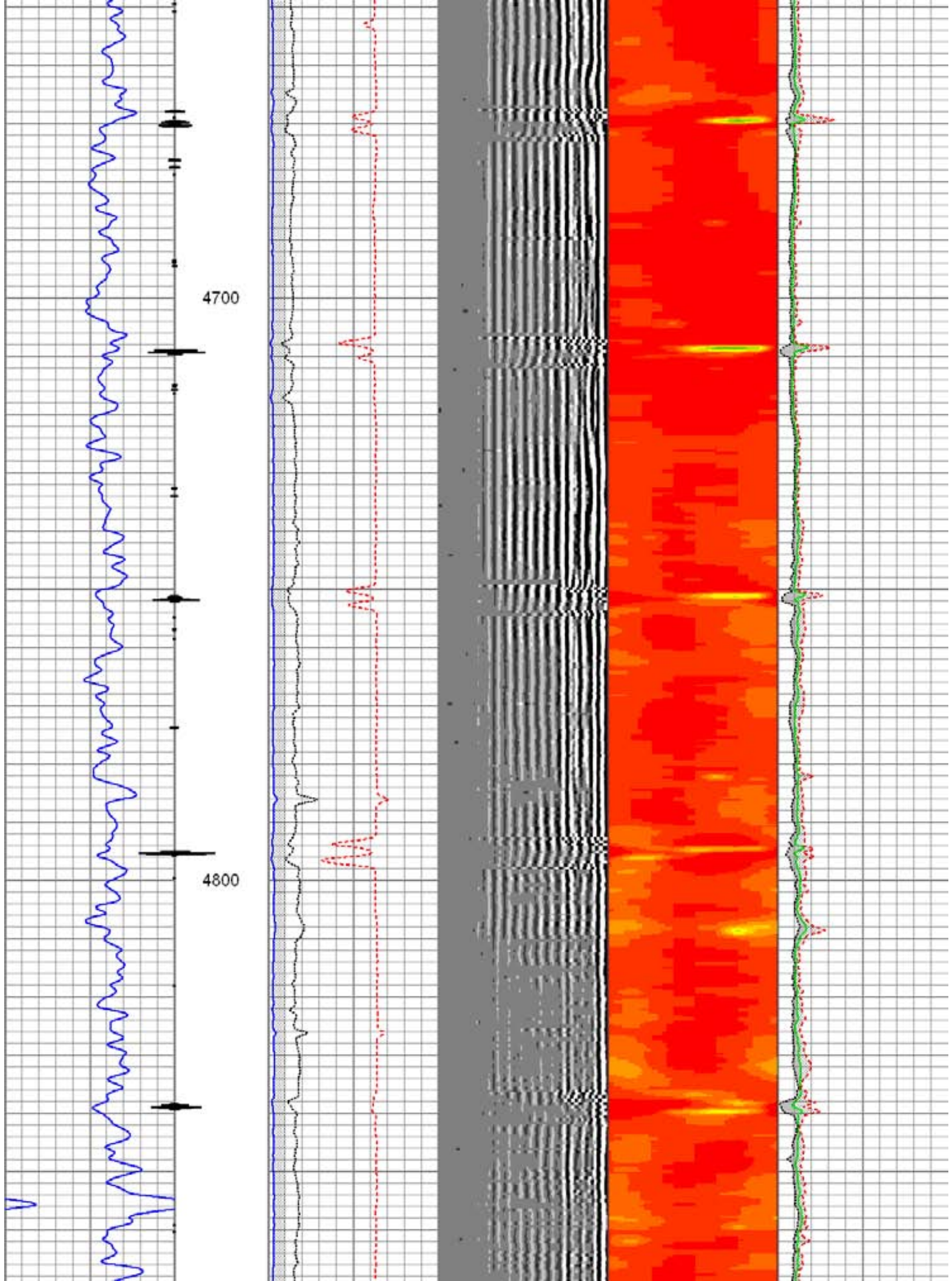


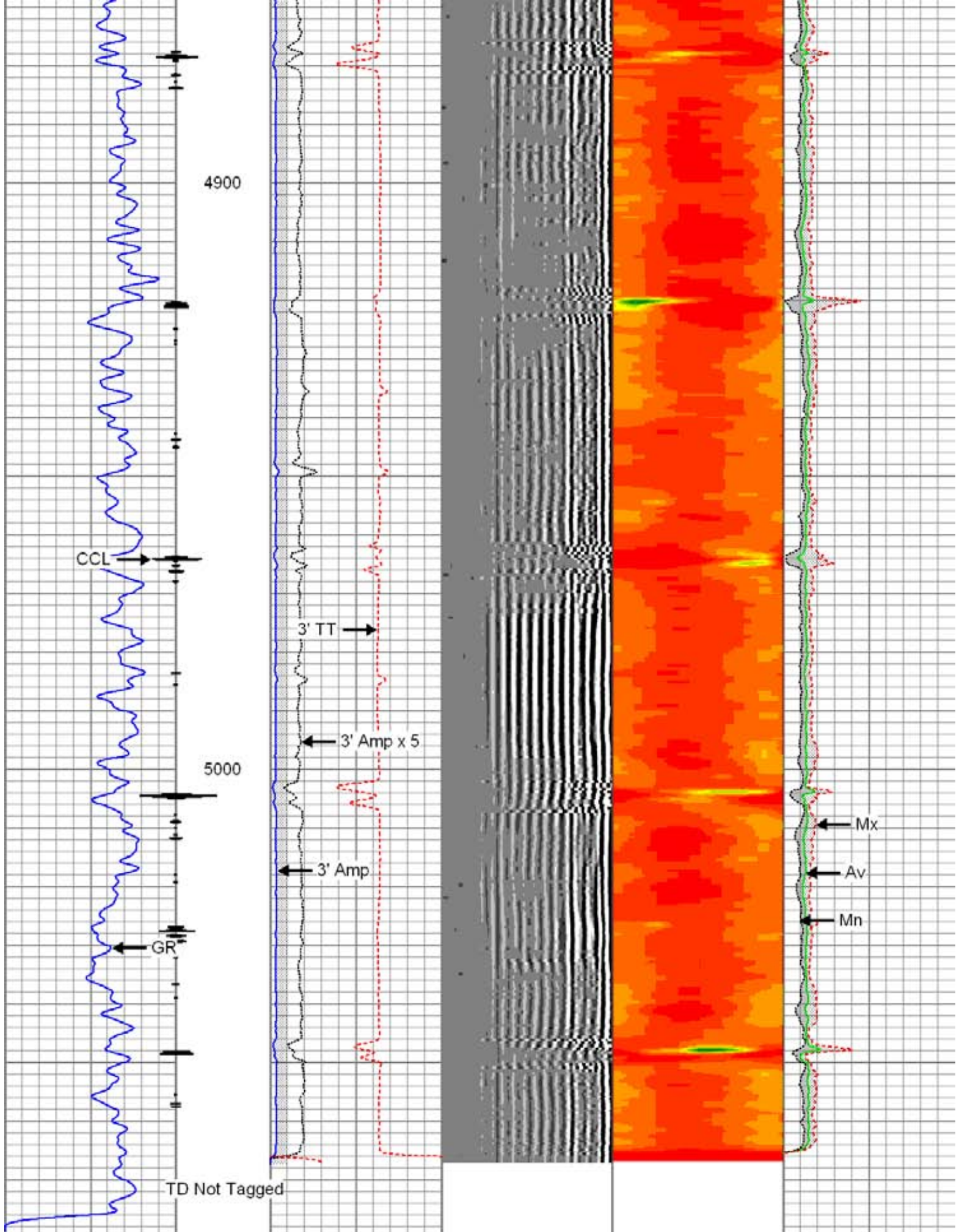












0	Gamma Ray 150	3' Amplitude	5' Variable Density Log	Sector Map	Average Amplitude
0	Collar Locator	(mV)	100 200	10 70	0 100

3' Amplitude x 5		
0	(mV)	20
3' Travel Time		
650	(usec)	150



Minimum Amplitude	
0	100
Maximum Amplitude	
0	100

Sensor	Offset (ft)	Schematic	Description	Len (ft)	OD (in)	Wt (lb)
CCL	22.21		STNDRD Standard Cable Head	1.00	1.44	10.00
			CCL-275tekco (2.75TEKCO) 2 3/4 TEK CCL Earth Mag	1.92	2.75	20.00
			SDSCENT Centralizer for testing	2.73	2.75	20.00
TEMP	16.38					
WVFS1	15.00		275CTEKSECWTWSLCANS-275RIB (1234) 9.31 2 3/4" (R.I.B.) TOOL 3FT, 5FT and 8EA RIB SIGNALS 400 DEG "F" @20K PSI With Sliding Cans For Pressure Balance	2.75	102.00	
WVFS2	15.00					
WVFS3	15.00					
WVFS4	15.00					
WVFS5	15.00					
WVFS6	15.00					
WVFS7	15.00					
WVFS8	15.00					
WVF3FT	14.25					
WVF5FT	13.25					
WVFCAL	9.46	SDSCENT Centralizer for testing	2.73	2.75	20.00	
WVFTEMP	9.46					
WVFSYNC	9.46					
GR	3.77		GR-Tek-Co (Tek-Co2) 2 3/4 400deg Scint gamma	4.00	2.75	40.00
			SDSCENT	2.73	2.75	20.00



Centralizer for testing

Dataset:	07-19-12_whiting_wolf_35-2613h.db: 19jul12/wolf_35-2/cbl/pass5
Total Length:	24.42 ft
Total Weight:	232.00 lb
O.D.	2.75 in



Company	WHITING OIL & GAS
Well	WOLF 35-2613H
Field	WILDCAT
County	WELD
State	COLORADO