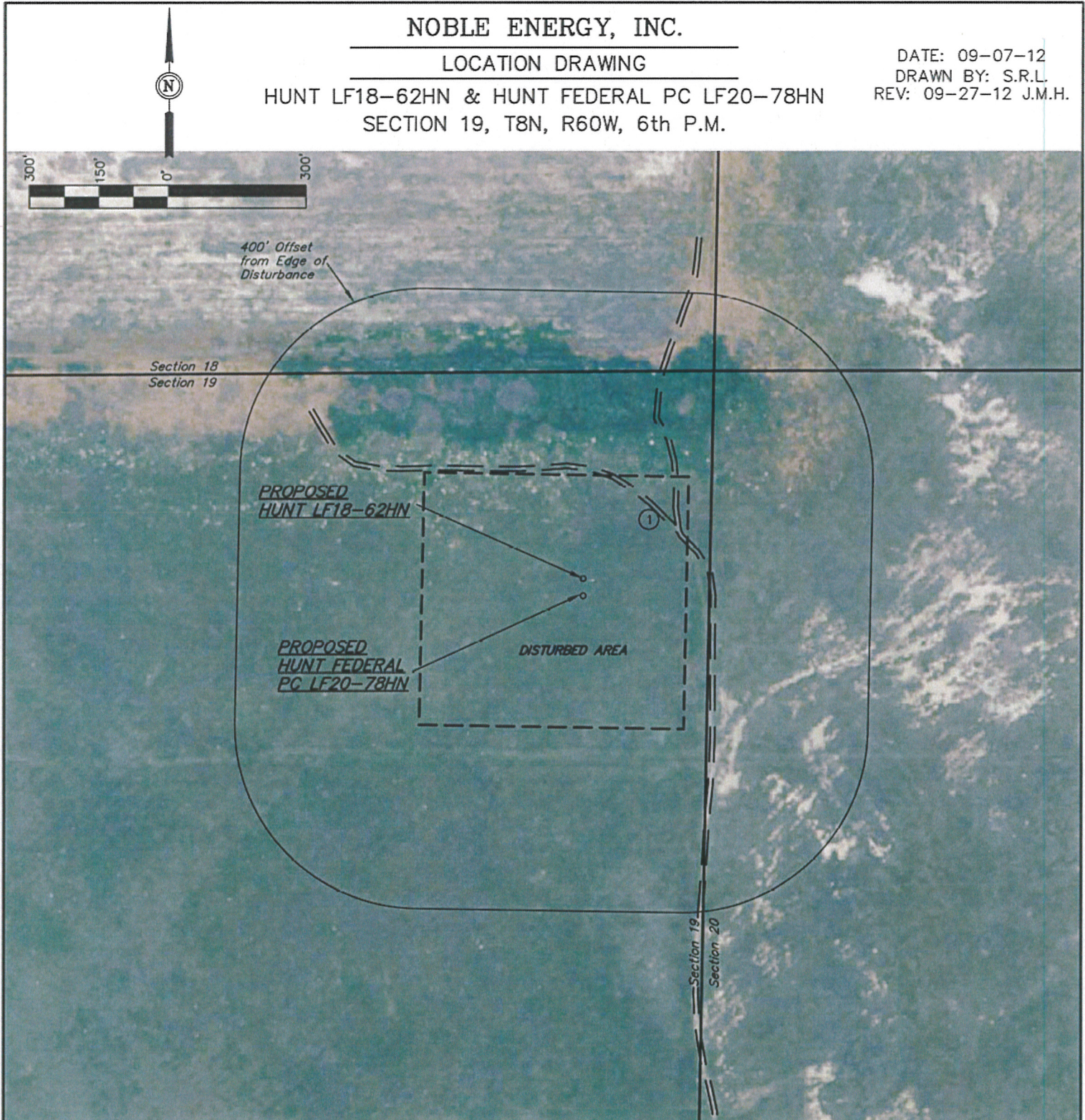


# NOBLE ENERGY, INC.

## LOCATION DRAWING

HUNT LF18-62HN & HUNT FEDERAL PC LF20-78HN  
SECTION 19, T8N, R60W, 6th P.M.

DATE: 09-07-12  
DRAWN BY: S.R.L.  
REV: 09-27-12 J.M.H.



### NOTE:

DIRECTION AND DISTANCE TO IMPROVEMENTS AND NEAREST FEATURES ARE FROM PROPOSED HUNT LF18-62HN.

### IMPROVEMENTS:

- ① 2-TRACK 219' NE

### PAD DETAILS:

WELL HEAD SPACING = 37.5'

NEAREST FEATURE: BUILDING 5280' +, PUBLIC ROAD  
4845 S (STATE HWY 14), ABOVE GROUND UTILITY  
5280' +, RAILROAD 5280' +, PROPERTY LINE 275' E

UINTAH ENGINEERING & LAND SURVEYING  
85 So. 200 East \* Vernal, Utah 84078 \* (435) 789-1017