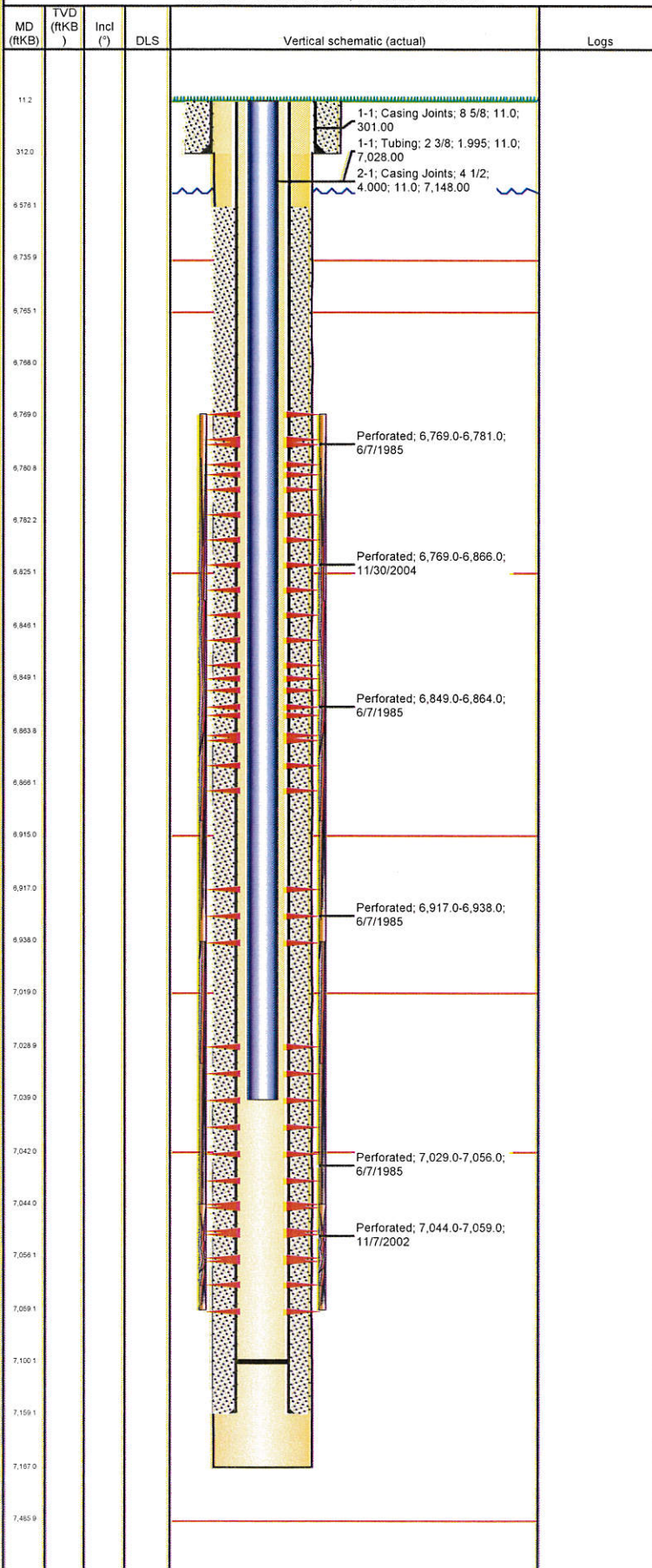


Well Name: CPC OSTER 19-01

VERTICAL - ORIGINAL HOLE, 11/15/2012 1:14:30 PM



Well Header

API	Business Unit	District	Well Config
05-123-12442	WATTENBERG	15	VERTICAL
Original KB Elevation (ft)	KB - GL / MSL (ftKB)	Spud Date	P & A Date
4,807.00	11.00	5/24/1985	
Comment			
Directions To Well			

Congressional Location

Quarter 1	Quarter 2	Quarter 3	Quarter 4	Section	Township	Twship N...	Range	Rng E/W Dir
		NE	NE	19	4	N	64	W

Bottom Hole Location

North-South Distance (ft)	From N or S Line	East-West Distance (ft)	From E or W Line

Plug Back Total Depths

Date	Depth (ftKB)	Method	Com
6/7/1985	7,107.0		
11/13/2002	7,090.0	CASING TALLY	
1/21/2005	7,100.0	TAG	

Wellbore Sections

Section Des	Size (in)	Act Top (ftKB)	Act Btm (ftKB)
SURFACE	12 1/4	11.0	312.0
PRODUCTION	7 7/8	312.0	7,167.0

Zone Statuses

Zone Name	Status Date	Status	Job
CODELL	6/18/1985	PR	DRILLING/COMPLETION - ORIGINAL, 5/24/1985 00:00
CODELL	11/17/2002	PR	RE-FRAC, 11/6/2002 00:00
CODELL	11/20/2004	SI	RE-FRAC, 11/19/2004 00:00
CODELL	1/22/2005	PR	COMMINGLED ZONES, 1/21/2005 00:00
NBRR	6/18/1985	PR	DRILLING/COMPLETION - ORIGINAL, 5/24/1985 00:00
NBRR	12/3/2004	PR	RE-FRAC, 11/19/2004 00:00
NBRR	1/22/2005	PR	COMMINGLED ZONES, 1/21/2005 00:00

Casing Strings

Surface, 312.0ftKB

Casing Description	Run Date	OD (in)	Wt/Len (lb/ft)	Grade	Top (ftKB)	Set Depth...
Surface	5/24/1985	8 5/8	24.00		11.0	312.0

Production, 7,159.0ftKB

Casing Description	Run Date	OD (in)	Wt/Len (lb/ft)	Grade	Top (ftKB)	Set Depth...
Production	5/31/1985	4 1/2	11.60	N-80	11.0	7,159.0

Cement

Description	Top Depth (ftKB)	Bottom Depth (ftKB)
SURFACE CASING CEMENT	11.0	312.0
Description	Top Depth (ftKB)	Bottom Depth (ftKB)
PRODUCTION CASING CEMENT	6,576.0	7,159.0

Tubing Components

Item Des	OD (in)	Wt (lb/ft)	Grade	Jts	Len (ft)	Btm (ftKB)	Btm (TVD) (ftKB)
Tubing	2 3/8	4.70	J-55	222	7,028.00	7,039.0	

Perforation Data

Zone	Bnch/St g	Entered Shot Total	Top (ftKB)	Btm (ftKB)	Date
NBRR, ORIGINAL HOLE		204	6,769.00	6,866.00	11/30/2004
NBRR, ORIGINAL HOLE	A	3	6,769.00	6,781.00	6/7/1985
NBRR, ORIGINAL HOLE	B	4	6,849.00	6,864.00	6/7/1985
NBRR, ORIGINAL HOLE	C	3	6,917.00	6,938.00	6/7/1985
CODELL, ORIGINAL HOLE		7	7,029.00	7,056.00	6/7/1985
CODELL, ORIGINAL HOLE		60	7,044.00	7,059.00	11/7/2002

Stimulations & Treatments

Date	Zone	Primary Job Type
6/11/1985	NIOBRARA-CODELL, ORIGINAL HOLE	DRILLING/COMPLETION - ORIGINAL
Technical Result		Tech Result Note

Comment
FRAC'D VIA LIMITED ENTRY

Well Name: CPC OSTER 19-01

VERTICAL - ORIGINAL HOLE, 11/15/2012 1:14:30 PM

Stimulations & Treatments

Date 11/11/2002	Zone CODELL, ORIGINAL HOLE	Primary Job Type RE-FRAC
Technical Result	Tech Result Details	Tech Result Note
Comment		

Date 12/1/2004	Zone NBRR, ORIGINAL HOLE	Primary Job Type RE-FRAC
Technical Result Failure	Tech Result Details Screen-out	Tech Result Note
Comment		

Other In Hole

Run Date	Des	OD (in)	Top (ftKB)	Btm (ftKB)

Logs

Date	Type	Top (ftKB)	Btm (ftKB)
11/7/2002	GAMMA RAY/CCL	6,350.0	7,107.0

