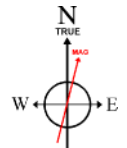
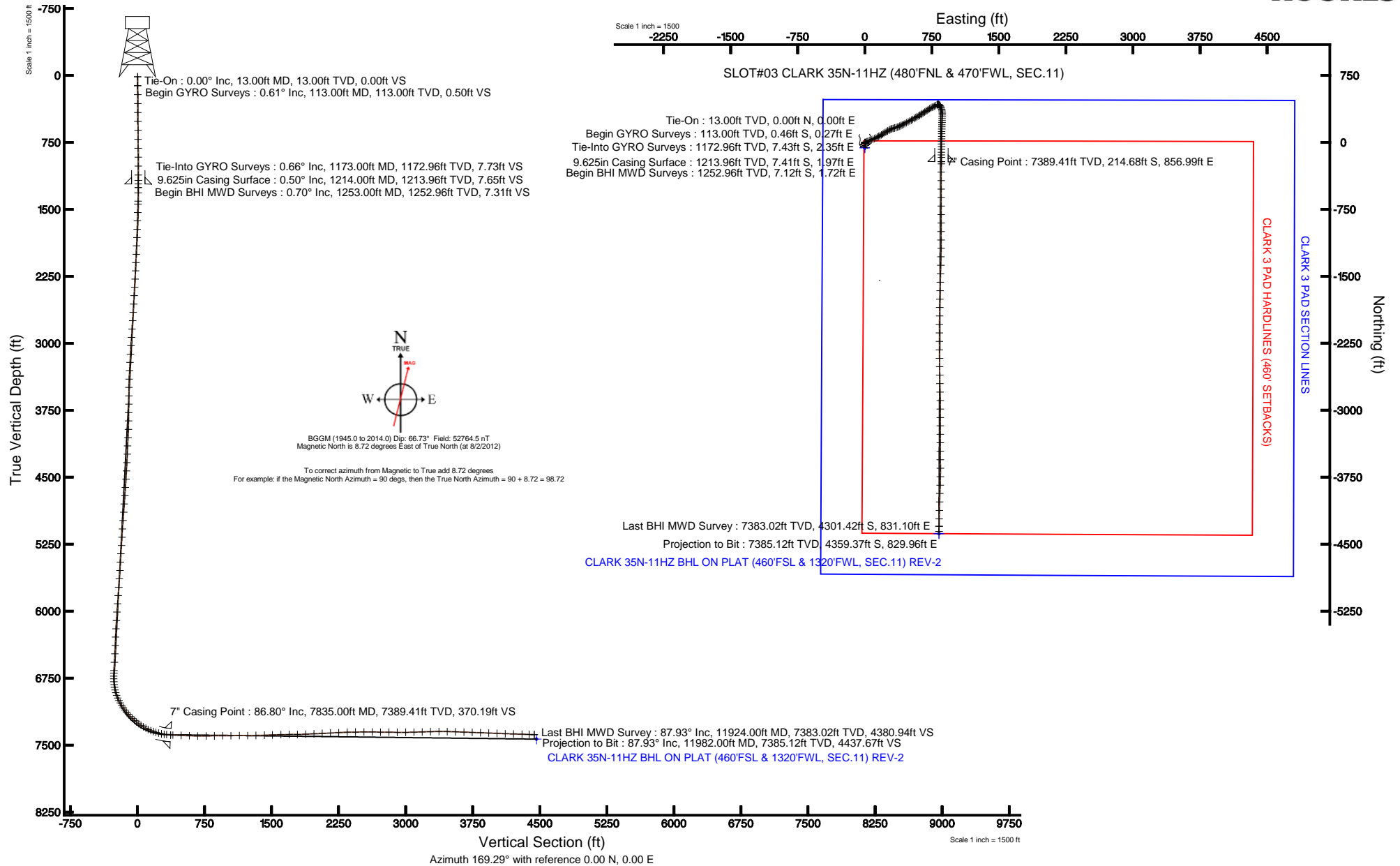


KERR-MCGEE OIL & GAS ONSHORE LP

Location: COLORADO Slot: SLOT#03 CLARK 35N-11HZ (480'FNL & 470'FWL, SEC.11)
 Field: WELD COUNTY (KERR MCGEE) Well: CLARK 35N-11HZ
 Facility: SEC.11-T1N-R66W Wellbore: CLARK 35N-11HZ PWB

Plot reference wellpath is CLARK 35N-11HZ (REV-D.0) PWP

True vertical depths are referenced to ENSIGN 145 (RKB)	Grid System: NAD83 / Lambert Colorado SP, Northern Zone (501), US feet
Measured depths are referenced to ENSIGN 145 (RKB)	North Reference: True north
ENSGIN 145 (RKB) to Mean Sea Level: 5118 feet	Scale: True distance
Mean Sea Level to Mud line (At Slot: SLOT#03 CLARK 35N-11HZ (480'FNL & 470'FWL, SEC.11)): 0 feet	Depths are in feet
Coordinates are in feet referenced to Slot	Created by: wilsje02 on 8/14/2012



BGGM (1945.0 to 2014.0) Dip: 66.73° Field: 52764.5 nT
 Magnetic North is 8.72 degrees East of True North (at 8/2/2012)
 To correct azimuth from Magnetic to True add 8.72 degrees
 For example: if the Magnetic North Azimuth = 90 degs, then the True North Azimuth = 90 + 8.72 = 98.72

Azimuth 169.29° with reference 0.00 N, 0.00 E



Actual Wellpath Report

CLARK 35N-11HZ AWP

Page 1 of 7



REFERENCE WELLPATH IDENTIFICATION

Operator	KERR-MCGEE OIL & GAS ONSHORE LP	Slot	SLOT#03 CLARK 35N-11HZ (480'FNL & 470'FWL, SEC.11)
Area	COLORADO	Well	CLARK 35N-11HZ
Field	WELD COUNTY (KERR MCGEE)	Wellbore	CLARK 35N-11HZ AWB
Facility	SEC.11-T1N-R66W		

REPORT SETUP INFORMATION

Projection System	NAD83 / Lambert Colorado SP, Northern Zone (501), US feet	Software System	WellArchitect® 3.0.2
North Reference	True	User	Wilsjef02
Scale	0.999962	Report Generated	8/14/2012 at 07:35:07
Convergence at slot	0.48° East	Database/Source file	WellArchitectDB/CLARK_35N-11HZ_AWB.xml

WELLPATH LOCATION

	Local coordinates		Grid coordinates		Geographic coordinates	
	North[ft]	East[ft]	Easting[US ft]	Northing[US ft]	Latitude	Longitude
Slot Location	60.11	0.00	3209320.10	1269905.33	40°04'18.685"N	104°45'07.348"W
Facility Reference Pt			3209320.61	1269845.23	40°04'18.091"N	104°45'07.348"W
Field Reference Pt			3197771.84	1268891.29	40°04'09.600"N	104°47'36.000"W

WELLPATH DATUM

Calculation method	Minimum curvature	ENSIGN 145 (RKB) to Facility Vertical Datum	5118.00ft
Horizontal Reference Pt	Slot	ENSIGN 145 (RKB) to Mean Sea Level	5118.00ft
Vertical Reference Pt	ENSIGN 145 (RKB)	ENSIGN 145 (RKB) to Mud Line at Slot (SLOT#03 CLARK 35N-11HZ (480'FNL & 470'FWL, SEC.11))	5118.00ft
MD Reference Pt	ENSIGN 145 (RKB)	Section Origin	N 0.00, E 0.00 ft
Field Vertical Reference	Mean Sea Level	Section Azimuth	169.22°



Actual Wellpath Report

CLARK 35N-11HZ AWP

Page 2 of 7



REFERENCE WELLPATH IDENTIFICATION

Operator	KERR-MCGEE OIL & GAS ONSHORE LP	Slot	SLOT#03 CLARK 35N-11HZ (480'FNL & 470'FWL, SEC.11)
Area	COLORADO	Well	CLARK 35N-11HZ
Field	WELD COUNTY (KERR MCGEE)	Wellbore	CLARK 35N-11HZ AWB
Facility	SEC.11-T1N-R66W		

WELLPATH DATA (153 stations) † = interpolated/extrapolated station

MD [ft]	Inclination [°]	Azimuth [°]	TVD [ft]	Vert Sect [ft]	North [ft]	East [ft]	Latitude	Longitude	DLS [°/100ft]	Comments
0.00†	0.000	149.410	0.00	0.00	0.00	0.00	40°04'18.685°N	104°45'07.348°W	0.00	
13.00	0.000	149.410	13.00	0.00	0.00	0.00	40°04'18.685°N	104°45'07.348°W	0.00	Tie-On
113.00	0.610	149.410	113.00	0.50	-0.46	0.27	40°04'18.680°N	104°45'07.345°W	0.61	Begin GYRO Surveys
213.00	0.490	148.810	212.99	1.40	-1.28	0.76	40°04'18.672°N	104°45'07.338°W	0.12	
313.00	0.470	135.260	312.99	2.14	-1.94	1.27	40°04'18.666°N	104°45'07.332°W	0.11	
413.00	0.360	148.870	412.99	2.78	-2.50	1.72	40°04'18.660°N	104°45'07.326°W	0.15	
513.00	0.440	147.350	512.98	3.43	-3.09	2.09	40°04'18.654°N	104°45'07.321°W	0.08	
613.00	0.540	147.310	612.98	4.22	-3.81	2.56	40°04'18.647°N	104°45'07.315°W	0.10	
713.00	0.440	159.420	712.98	5.04	-4.57	2.95	40°04'18.640°N	104°45'07.310°W	0.14	
813.00	0.660	150.200	812.97	5.96	-5.43	3.37	40°04'18.631°N	104°45'07.305°W	0.24	
913.00	0.400	195.330	912.97	6.82	-6.26	3.56	40°04'18.623°N	104°45'07.302°W	0.47	
1013.00	0.450	216.190	1012.97	7.40	-6.92	3.24	40°04'18.617°N	104°45'07.306°W	0.16	
1113.00	0.240	255.210	1112.96	7.68	-7.29	2.80	40°04'18.613°N	104°45'07.312°W	0.30	
1173.00	0.660	252.150	1172.96	7.73	-7.43	2.35	40°04'18.612°N	104°45'07.318°W	0.70	Tie-Into GYRO Surveys
1253.00	0.700	337.200	1252.96	7.31	-7.12	1.72	40°04'18.615°N	104°45'07.326°W	1.15	Begin BHI MWD Surveys
1314.00	1.150	10.540	1313.95	6.38	-6.17	1.69	40°04'18.624°N	104°45'07.326°W	1.12	
1406.00	2.850	53.290	1405.90	4.52	-3.90	3.69	40°04'18.647°N	104°45'07.300°W	2.34	
1438.00	2.770	43.230	1437.86	3.72	-2.86	4.86	40°04'18.657°N	104°45'07.285°W	1.56	
1533.00	4.140	53.930	1532.68	0.90	0.83	9.21	40°04'18.693°N	104°45'07.230°W	1.59	
1628.00	5.980	62.470	1627.31	-1.99	5.14	16.37	40°04'18.736°N	104°45'07.137°W	2.09	
1722.00	7.410	63.510	1720.67	-5.04	10.11	26.13	40°04'18.785°N	104°45'07.012°W	1.53	
1817.00	9.860	67.080	1814.58	-8.41	16.01	39.11	40°04'18.843°N	104°45'06.845°W	2.64	
1912.00	11.370	68.840	1907.96	-11.81	22.56	55.34	40°04'18.908°N	104°45'06.636°W	1.63	
2007.00	11.420	68.300	2001.08	-15.28	29.42	72.81	40°04'18.976°N	104°45'06.411°W	0.12	
2102.00	11.640	68.140	2094.17	-18.90	36.46	90.44	40°04'19.045°N	104°45'06.185°W	0.23	
2197.00	11.300	65.620	2187.27	-22.93	43.87	107.81	40°04'19.119°N	104°45'05.961°W	0.64	
2291.00	11.050	63.490	2279.49	-27.54	51.69	124.26	40°04'19.196°N	104°45'05.750°W	0.51	
2386.00	11.070	61.790	2372.72	-32.74	60.07	140.45	40°04'19.279°N	104°45'05.541°W	0.34	
2481.00	10.770	60.930	2466.00	-38.26	68.69	156.24	40°04'19.364°N	104°45'05.338°W	0.36	
2576.00	9.750	60.190	2559.48	-43.67	77.01	170.98	40°04'19.446°N	104°45'05.149°W	1.08	
2671.00	10.690	58.010	2652.97	-49.48	85.67	185.43	40°04'19.532°N	104°45'04.963°W	1.07	
2765.00	10.240	58.500	2745.41	-55.59	94.66	199.95	40°04'19.620°N	104°45'04.776°W	0.49	
2860.00	9.790	57.420	2838.96	-61.58	103.42	213.96	40°04'19.707°N	104°45'04.596°W	0.51	
2955.00	10.130	52.020	2932.53	-68.40	112.91	227.35	40°04'19.801°N	104°45'04.424°W	1.05	
3050.00	10.560	61.520	3026.00	-74.86	122.20	241.59	40°04'19.893°N	104°45'04.240°W	1.85	
3145.00	9.510	61.930	3119.54	-79.84	130.05	256.16	40°04'19.970°N	104°45'04.053°W	1.11	
3239.00	9.380	61.040	3212.27	-84.54	137.41	269.72	40°04'20.043°N	104°45'03.879°W	0.21	
3334.00	8.960	59.410	3306.05	-89.46	144.92	282.86	40°04'20.117°N	104°45'03.710°W	0.52	
3429.00	7.290	57.770	3400.10	-94.18	151.90	294.33	40°04'20.186°N	104°45'03.562°W	1.77	
3524.00	7.480	74.140	3494.32	-96.93	156.81	305.38	40°04'20.235°N	104°45'03.420°W	2.22	
3619.00	8.250	80.820	3588.43	-97.28	159.58	318.05	40°04'20.262°N	104°45'03.257°W	1.26	
3713.00	9.120	73.750	3681.35	-97.81	162.75	331.86	40°04'20.293°N	104°45'03.079°W	1.46	
3808.00	10.050	73.910	3775.02	-99.29	167.15	347.06	40°04'20.337°N	104°45'02.884°W	0.98	
3903.00	8.490	75.830	3868.78	-100.47	171.16	361.82	40°04'20.376°N	104°45'02.694°W	1.67	
3998.00	8.970	66.920	3962.68	-102.47	175.78	375.43	40°04'20.422°N	104°45'02.519°W	1.51	



Actual Wellpath Report

CLARK 35N-11HZ AWP

Page 3 of 7



REFERENCE WELLPATH IDENTIFICATION

Operator	KERR-MCGEE OIL & GAS ONSHORE LP	Slot	SLOT#03 CLARK 35N-11HZ (480'FNL & 470'FWL, SEC.11)
Area	COLORADO	Well	CLARK 35N-11HZ
Field	WELD COUNTY (KERR MCGEE)	Wellbore	CLARK 35N-11HZ AWB
Facility	SEC.11-T1N-R66W		

WELLPATH DATA (153 stations)

MD [ft]	Inclination [°]	Azimuth [°]	TVD [ft]	Vert Sect [ft]	North [ft]	East [ft]	Latitude	Longitude	DLS [°/100ft]	Comments
4093.00	10.810	62.640	4056.27	-106.59	182.78	390.16	40°04'20.491"N	104°45'02.329"W	2.08	
4188.00	9.160	63.500	4149.83	-111.18	190.25	404.84	40°04'20.565"N	104°45'02.140"W	1.74	
4282.00	9.380	65.110	4242.60	-115.07	196.81	418.49	40°04'20.630"N	104°45'01.965"W	0.36	
4377.00	9.280	61.530	4336.34	-119.29	203.72	432.24	40°04'20.698"N	104°45'01.788"W	0.62	
4472.00	11.810	64.060	4429.73	-124.16	211.63	447.72	40°04'20.776"N	104°45'01.589"W	2.71	
4567.00	13.460	62.070	4522.43	-129.96	221.06	466.23	40°04'20.870"N	104°45'01.351"W	1.80	
4662.00	12.430	61.660	4615.01	-136.31	231.09	485.00	40°04'20.969"N	104°45'01.109"W	1.09	
4757.00	11.870	60.200	4707.88	-142.58	240.80	502.48	40°04'21.065"N	104°45'00.885"W	0.67	
4851.00	11.600	61.170	4799.92	-148.66	250.16	519.15	40°04'21.157"N	104°45'00.670"W	0.36	
4946.00	11.870	58.410	4892.93	-155.09	259.89	535.84	40°04'21.253"N	104°45'00.455"W	0.66	
5041.00	12.130	58.690	4985.86	-162.06	270.19	552.69	40°04'21.355"N	104°45'00.239"W	0.28	
5136.00	11.790	61.940	5078.80	-168.44	279.95	569.78	40°04'21.451"N	104°45'00.019"W	0.79	
5231.00	10.950	60.550	5171.93	-174.21	288.95	586.20	40°04'21.540"N	104°44'59.808"W	0.93	
5326.00	10.360	59.200	5265.29	-180.03	297.76	601.39	40°04'21.627"N	104°44'59.612"W	0.67	
5420.00	9.010	57.160	5357.95	-185.69	306.08	614.84	40°04'21.710"N	104°44'59.439"W	1.48	
5515.00	8.890	55.780	5451.80	-191.40	314.24	627.16	40°04'21.790"N	104°44'59.281"W	0.26	
5610.00	9.650	58.020	5545.55	-197.20	322.58	639.98	40°04'21.873"N	104°44'59.116"W	0.89	
5705.00	11.020	57.430	5639.01	-203.45	331.69	654.39	40°04'21.963"N	104°44'58.930"W	1.45	
5800.00	10.370	55.780	5732.36	-210.22	341.39	669.11	40°04'22.059"N	104°44'58.741"W	0.76	
5894.00	10.760	56.970	5824.77	-216.91	350.93	683.46	40°04'22.153"N	104°44'58.556"W	0.48	
5989.00	9.650	55.820	5918.26	-223.43	360.23	697.49	40°04'22.245"N	104°44'58.376"W	1.19	
6084.00	10.580	55.530	6011.78	-230.10	369.64	711.26	40°04'22.338"N	104°44'58.199"W	0.98	
6179.00	10.220	60.000	6105.23	-236.38	378.79	725.75	40°04'22.428"N	104°44'58.012"W	0.93	
6274.00	8.700	59.070	6198.93	-241.63	386.70	739.22	40°04'22.506"N	104°44'57.839"W	1.61	
6368.00	9.070	65.450	6291.80	-245.84	393.43	752.05	40°04'22.573"N	104°44'57.674"W	1.12	
6463.00	8.850	62.670	6385.65	-249.70	399.90	765.36	40°04'22.637"N	104°44'57.503"W	0.51	
6558.00	9.270	61.830	6479.46	-254.07	406.87	778.59	40°04'22.706"N	104°44'57.333"W	0.46	
6653.00	10.280	62.630	6573.08	-258.78	414.38	792.87	40°04'22.780"N	104°44'57.149"W	1.07	
6748.00	8.590	61.290	6666.79	-263.38	421.68	806.62	40°04'22.852"N	104°44'56.972"W	1.79	
6779.00	8.480	58.200	6697.45	-264.92	424.00	810.59	40°04'22.875"N	104°44'56.921"W	1.52	
6811.00	8.440	67.120	6729.10	-266.26	426.16	814.76	40°04'22.896"N	104°44'56.867"W	4.10	
6842.00	8.230	88.610	6759.78	-266.37	427.09	819.08	40°04'22.905"N	104°44'56.812"W	10.01	
6874.00	8.800	106.820	6791.43	-264.86	426.44	823.71	40°04'22.899"N	104°44'56.752"W	8.57	
6906.00	10.650	118.500	6822.98	-261.86	424.32	828.65	40°04'22.878"N	104°44'56.689"W	8.42	
6937.00	12.770	129.190	6853.33	-257.42	420.79	833.83	40°04'22.843"N	104°44'56.622"W	9.76	
6969.00	15.110	140.000	6884.39	-251.07	415.36	839.25	40°04'22.790"N	104°44'56.552"W	10.91	
7000.00	17.910	147.590	6914.12	-243.11	408.24	844.40	40°04'22.719"N	104°44'56.486"W	11.38	
7032.00	20.790	155.250	6944.31	-233.02	398.92	849.42	40°04'22.627"N	104°44'56.422"W	11.98	
7064.00	24.430	156.320	6973.85	-221.05	387.70	854.46	40°04'22.516"N	104°44'56.357"W	11.45	
7095.00	27.320	161.410	7001.74	-207.75	375.08	859.30	40°04'22.391"N	104°44'56.295"W	11.75	
7127.00	29.150	168.710	7029.94	-192.68	360.47	863.17	40°04'22.247"N	104°44'56.245"W	12.20	
7159.00	31.380	174.300	7057.58	-176.58	344.54	865.52	40°04'22.090"N	104°44'56.214"W	11.22	
7190.00	33.770	179.310	7083.71	-160.05	327.88	866.43	40°04'21.925"N	104°44'56.203"W	11.62	
7222.00	37.240	181.000	7109.75	-141.81	309.30	866.37	40°04'21.741"N	104°44'56.204"W	11.27	
7253.00	40.390	181.010	7133.91	-122.79	289.88	866.03	40°04'21.549"N	104°44'56.208"W	10.16	



Actual Wellpath Report

CLARK 35N-11HZ AWP

Page 4 of 7



REFERENCE WELLPATH IDENTIFICATION

Operator	KERR-MCGEE OIL & GAS ONSHORE LP	Slot	SLOT#03 CLARK 35N-11HZ (480'FNL & 470'FWL, SEC.11)
Area	COLORADO	Well	CLARK 35N-11HZ
Field	WELD COUNTY (KERR MCGEE)	Wellbore	CLARK 35N-11HZ AWB
Facility	SEC.11-T1N-R66W		

WELLPATH DATA (153 stations) † = interpolated/extrapolated station

MD [ft]	Inclination [°]	Azimuth [°]	TVD [ft]	Vert Sect [ft]	North [ft]	East [ft]	Latitude	Longitude	DLS [°/100ft]	Comments
7285.00	42.070	181.090	7157.97	-102.15	268.79	865.64	40°04'21.341"N	104°44'56.213"W	5.25	
7317.00	45.430	183.020	7181.08	-80.58	246.68	864.84	40°04'21.123"N	104°44'56.223"W	11.30	
7348.00	48.050	182.630	7202.33	-58.64	224.14	863.73	40°04'20.900"N	104°44'56.238"W	8.50	
7380.00	49.550	182.240	7223.40	-35.20	200.08	862.70	40°04'20.662"N	104°44'56.251"W	4.78	
7411.00	52.760	181.980	7242.85	-11.67	175.96	861.82	40°04'20.424"N	104°44'56.262"W	10.38	
7443.00	54.930	180.910	7261.72	13.58	150.13	861.17	40°04'20.168"N	104°44'56.271"W	7.30	
7475.00	56.270	181.200	7279.80	39.42	123.73	860.68	40°04'19.908"N	104°44'56.277"W	4.25	
7506.00	58.780	181.700	7296.45	64.98	97.59	860.02	40°04'19.649"N	104°44'56.285"W	8.21	
7538.00	61.760	180.970	7312.31	92.14	69.81	859.37	40°04'19.375"N	104°44'56.294"W	9.52	
7569.00	64.990	180.010	7326.20	119.32	42.11	859.14	40°04'19.101"N	104°44'56.297"W	10.78	
7601.00	68.160	182.550	7338.93	148.02	12.76	858.48	40°04'18.811"N	104°44'56.305"W	12.29	
7633.00	71.620	179.190	7349.93	177.45	-17.28	858.03	40°04'18.514"N	104°44'56.311"W	14.63	
7664.00	73.700	179.800	7359.17	206.56	-46.87	858.29	40°04'18.222"N	104°44'56.308"W	6.97	
7696.00	74.830	180.590	7367.85	236.80	-77.67	858.18	40°04'17.917"N	104°44'56.309"W	4.26	
7728.00	77.370	179.680	7375.53	267.30	-108.73	858.11	40°04'17.610"N	104°44'56.310"W	8.40	
7759.00	80.420	180.170	7381.50	297.18	-139.14	858.15	40°04'17.310"N	104°44'56.310"W	9.96	
7787.00	83.610	181.160	7385.39	324.36	-166.87	857.83	40°04'17.036"N	104°44'56.314"W	11.92	
7835.00†	86.797	180.846	7389.41	371.17	-214.68	856.99	40°04'16.563"N	104°44'56.325"W	6.67	7" Casing Point
7859.00	88.390	180.690	7390.41	394.67	-238.66	856.67	40°04'16.326"N	104°44'56.329"W	6.67	
7953.00	87.780	180.530	7393.56	486.76	-332.60	855.67	40°04'15.398"N	104°44'56.342"W	0.67	
8048.00	87.900	180.110	7397.14	579.92	-427.53	855.14	40°04'14.460"N	104°44'56.348"W	0.46	
8143.00	89.690	179.950	7399.13	673.21	-522.51	855.09	40°04'13.521"N	104°44'56.349"W	1.89	
8238.00	90.550	180.330	7398.93	766.49	-617.51	854.86	40°04'12.583"N	104°44'56.352"W	0.99	
8333.00	90.400	180.150	7398.15	859.74	-712.50	854.46	40°04'11.644"N	104°44'56.357"W	0.25	
8427.00	90.270	179.830	7397.60	952.08	-806.50	854.48	40°04'10.715"N	104°44'56.357"W	0.37	
8522.00	91.230	180.410	7396.35	1045.35	-901.49	854.28	40°04'09.776"N	104°44'56.360"W	1.18	
8617.00	90.990	180.330	7394.51	1138.54	-996.47	853.66	40°04'08.838"N	104°44'56.368"W	0.27	
8712.00	89.780	179.710	7393.88	1231.86	-1091.47	853.63	40°04'07.899"N	104°44'56.368"W	1.43	
8807.00	90.960	179.960	7393.26	1325.23	-1186.46	853.90	40°04'06.960"N	104°44'56.365"W	1.27	
8902.00	91.790	181.020	7390.98	1418.37	-1281.43	853.09	40°04'06.022"N	104°44'56.375"W	1.42	
8996.00	91.820	181.740	7388.02	1510.21	-1375.35	850.83	40°04'05.093"N	104°44'56.404"W	0.77	
9091.00	91.570	181.960	7385.21	1602.87	-1470.26	847.76	40°04'04.155"N	104°44'56.444"W	0.35	
9186.00	90.890	180.930	7383.17	1695.70	-1565.21	845.37	40°04'03.217"N	104°44'56.475"W	1.30	
9281.00	90.340	182.280	7382.15	1788.48	-1660.16	842.71	40°04'02.279"N	104°44'56.509"W	1.53	
9376.00	92.520	180.960	7379.78	1881.23	-1755.09	840.02	40°04'01.341"N	104°44'56.543"W	2.68	
9470.00	92.710	181.010	7375.49	1973.16	-1848.98	838.41	40°04'00.413"N	104°44'56.564"W	0.21	
9565.00	92.850	180.960	7370.89	2066.05	-1943.85	836.78	40°03'59.475"N	104°44'56.585"W	0.16	
9660.00	93.230	181.240	7365.85	2158.88	-2038.70	834.96	40°03'58.538"N	104°44'56.609"W	0.50	
9755.00	92.420	180.050	7361.16	2251.89	-2133.58	833.89	40°03'57.600"N	104°44'56.622"W	1.51	
9850.00	91.530	179.670	7357.89	2345.20	-2228.52	834.12	40°03'56.662"N	104°44'56.620"W	1.02	
9945.00	90.640	179.290	7356.09	2438.66	-2323.50	834.98	40°03'55.724"N	104°44'56.609"W	1.02	
10040.00	90.830	179.410	7354.87	2532.17	-2418.48	836.06	40°03'54.785"N	104°44'56.595"W	0.24	
10134.00	89.190	179.100	7354.86	2624.73	-2512.47	837.28	40°03'53.856"N	104°44'56.579"W	1.78	
10229.00	88.950	178.970	7356.40	2718.33	-2607.44	838.88	40°03'52.918"N	104°44'56.558"W	0.29	
10324.00	89.660	178.840	7357.55	2811.97	-2702.42	840.70	40°03'51.979"N	104°44'56.535"W	0.76	



Actual Wellpath Report

CLARK 35N-11HZ AWP

Page 5 of 7



REFERENCE WELLPATH IDENTIFICATION

Operator	KERR-MCGEE OIL & GAS ONSHORE LP	Slot	SLOT#03 CLARK 35N-11HZ (480'FNL & 470'FWL, SEC.11)
Area	COLORADO	Well	CLARK 35N-11HZ
Field	WELD COUNTY (KERR MCGEE)	Wellbore	CLARK 35N-11HZ AWB
Facility	SEC.11-T1N-R66W		

WELLPATH DATA (153 stations)

MD [ft]	Inclination [°]	Azimuth [°]	TVD [ft]	Vert Sect [ft]	North [ft]	East [ft]	Latitude	Longitude	DLS [°/100ft]	Comments
10419.00	89.230	178.250	7358.47	2905.71	-2797.38	843.11	40°03'51.041"N	104°44'56.504"W	0.77	
10514.00	90.670	179.090	7358.55	2999.41	-2892.35	845.32	40°03'50.102"N	104°44'56.476"W	1.75	
10609.00	91.620	180.490	7356.66	3092.78	-2987.33	845.66	40°03'49.163"N	104°44'56.471"W	1.78	
10703.00	91.940	179.960	7353.74	3185.01	-3081.28	845.29	40°03'48.235"N	104°44'56.476"W	0.66	
10798.00	91.230	180.780	7351.11	3278.18	-3176.24	844.68	40°03'47.297"N	104°44'56.484"W	1.14	
10893.00	90.150	179.240	7349.96	3371.49	-3271.23	844.66	40°03'46.358"N	104°44'56.484"W	1.98	
10987.00	89.080	180.900	7350.60	3463.80	-3365.23	844.55	40°03'45.429"N	104°44'56.486"W	2.10	
11082.00	87.930	179.220	7353.07	3557.07	-3460.19	844.45	40°03'44.491"N	104°44'56.487"W	2.14	
11177.00	88.240	179.320	7356.25	3650.56	-3555.13	845.66	40°03'43.552"N	104°44'56.472"W	0.34	
11272.00	87.690	180.100	7359.62	3743.91	-3650.07	846.14	40°03'42.614"N	104°44'56.466"W	1.00	
11367.00	87.930	180.060	7363.25	3837.14	-3745.00	846.01	40°03'41.676"N	104°44'56.467"W	0.26	
11462.00	87.580	182.550	7366.97	3929.96	-3839.89	843.85	40°03'40.738"N	104°44'56.495"W	2.64	
11556.00	87.830	181.750	7370.74	4021.50	-3933.75	840.32	40°03'39.811"N	104°44'56.541"W	0.89	
11651.00	88.090	181.640	7374.12	4114.20	-4028.65	837.51	40°03'38.873"N	104°44'56.577"W	0.30	
11746.00	88.250	181.630	7377.15	4206.93	-4123.56	834.81	40°03'37.935"N	104°44'56.612"W	0.17	
11841.00	88.120	180.990	7380.16	4299.78	-4218.49	832.63	40°03'36.997"N	104°44'56.640"W	0.69	
11924.00	87.930	181.130	7383.02	4380.96	-4301.42	831.10	40°03'36.177"N	104°44'56.659"W	0.28	Last BHI MWD Survey
11982.00	87.930	181.130	7385.12	4437.68	-4359.37	829.96	40°03'35.605"N	104°44'56.674"W	0.00	Projection to Bit

HOLE & CASING SECTIONS - Ref Wellbore: CLARK 35N-11HZ AWB Ref Wellpath: CLARK 35N-11HZ AWP

String/Diameter	Start MD [ft]	End MD [ft]	Interval [ft]	Start TVD [ft]	End TVD [ft]	Start N/S [ft]	Start E/W [ft]	End N/S [ft]	End E/W [ft]
13.5in Open Hole	13.00	1214.00	1201.00	13.00	1213.96	0.00	0.00	-7.41	1.97
9.625in Casing Surface	13.00	1214.00	1201.00	13.00	1213.96	0.00	0.00	-7.41	1.97
8.75in Open Hole	1214.00	7847.00	6633.00	1213.96	7389.99	-7.41	1.97	-226.67	856.82
7in Casing Intermediate	13.00	7835.00	7822.00	13.00	7389.41	0.00	0.00	-214.68	856.99
6.125in Open Hole	7835.00	11982.00	4147.00	7389.41	7385.12	-214.68	856.99	-4359.37	829.96



Actual Wellpath Report

CLARK 35N-11HZ AWP

Page 6 of 7



REFERENCE WELLPATH IDENTIFICATION			
Operator	KERR-MCGEE OIL & GAS ONSHORE LP	Slot	SLOT#03 CLARK 35N-11HZ (480'FNL & 470'FWL, SEC.11)
Area	COLORADO	Well	CLARK 35N-11HZ
Field	WELD COUNTY (KERR MCGEE)	Wellbore	CLARK 35N-11HZ AWB
Facility	SEC.11-T1N-R66W		

TARGETS									
Name	MD [ft]	TVD [ft]	North [ft]	East [ft]	Grid East [US ft]	Grid North [US ft]	Latitude	Longitude	Shape
CLARK 3 PAD SECTION LINES		-2.00	-60.11	0.00	3209320.61	1269845.23	40°04'18.091"N	104°45'07.348"W	polygon
CLARK 35N-11HZ BHL ON PLAT (460'FSL & 1320'FWL, SEC.11) REV-1		7280.00	-4384.57	829.15	3210186.17	1265528.09	40°03'35.356"N	104°44'56.684"W	point
CLARK 35N-11HZ BHL ON PLAT (460'FSL & 1320'FWL, SEC.11) REV-2		7435.00	-4384.57	829.15	3210186.17	1265528.09	40°03'35.356"N	104°44'56.684"W	point
CLARK 3 PAD HARDLINES (460' SETBACKS)		7498.00	-60.11	0.00	3209320.61	1269845.23	40°04'18.091"N	104°45'07.348"W	polygon

WELLPATH COMPOSITION - Ref Wellbore: CLARK 35N-11HZ AWB Ref Wellpath: CLARK 35N-11HZ AWP				
Start MD [ft]	End MD [ft]	Positional Uncertainty Model	Log Name/Comment	Wellbore
13.00	1173.00	Generic gyro - continuous (Standard)	GYRODATA SURVEYS <113-1173>	CLARK 35N-11HZ AWB
1173.00	7787.00	NaviTrak (Standard)	BHI MWD SURVEYS 8 3/4" HOLE <1253-7787>	CLARK 35N-11HZ AWB
7787.00	11924.00	OnTrak (Standard)	BHI MWD SURVEYS 6 1/8" HOLE <7859-11924>	CLARK 35N-11HZ AWB
11924.00	11982.00	Blind Drilling (std)	Projection to bit	CLARK 35N-11HZ AWB



Actual Wellpath Report

CLARK 35N-11HZ AWP

Page 7 of 7



REFERENCE WELLPATH IDENTIFICATION

Operator	KERR-MCGEE OIL & GAS ONSHORE LP	Slot	SLOT#03 CLARK 35N-11HZ (480'FNL & 470'FWL, SEC.11)
Area	COLORADO	Well	CLARK 35N-11HZ
Field	WELD COUNTY (KERR MCGEE)	Wellbore	CLARK 35N-11HZ AWP
Facility	SEC.11-T1N-R66W		

WELLPATH COMMENTS

MD [ft]	Inclination [°]	Azimuth [°]	TVD [ft]	Comment
13.00	0.000	149.410	13.00	Tie-On
113.00	0.610	149.410	113.00	Begin GYRO Surveys
1173.00	0.660	252.150	1172.96	Tie-Into GYRO Surveys
1253.00	0.700	337.200	1252.96	Begin BHI MWD Surveys
7835.00	86.797	180.846	7389.41	7" Casing Point
11924.00	87.930	181.130	7383.02	Last BHI MWD Survey
11982.00	87.930	181.130	7385.12	Projection to Bit