

Casing, Liner and Cement Summary

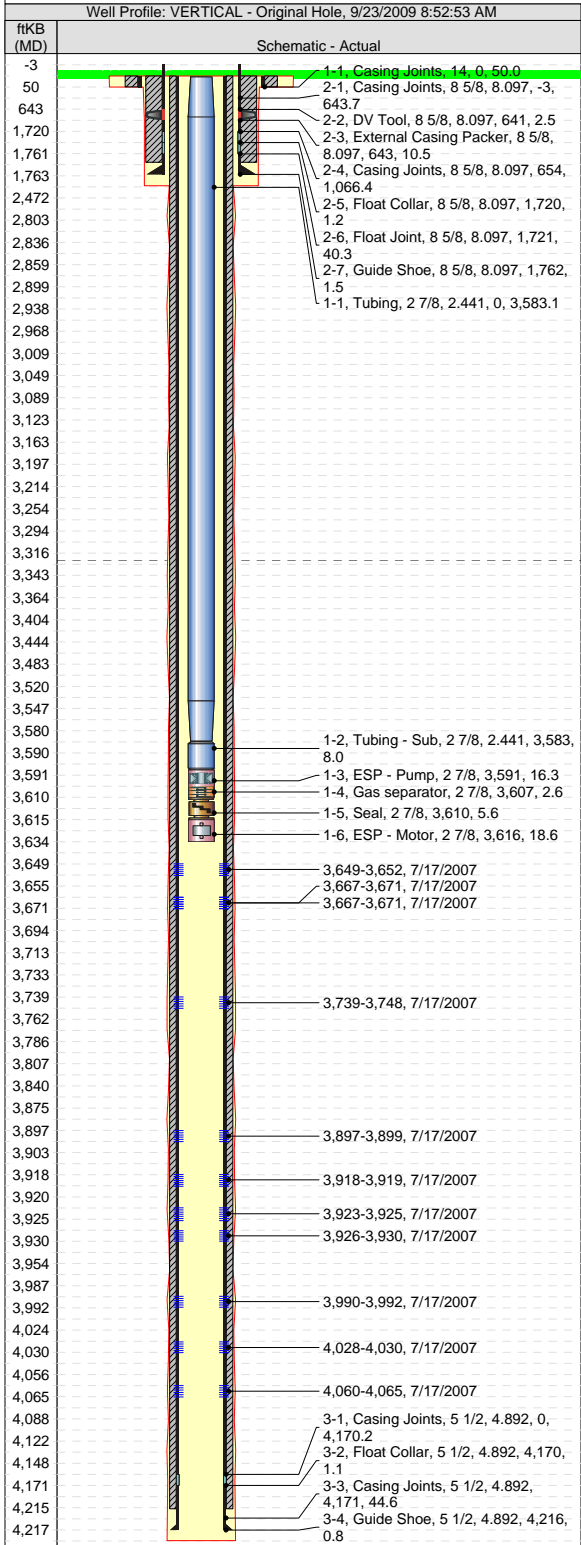
Conductor

Well Name: Adairsville 13-1

Western Division

API/UWI 05-081-07362-0000	Field Name LAY CREEK	QTR/QTR NWSW	Section 1	Township 7N	Range 93W
Spud Date 2/15/2007	Original KB Elevation (ft) 6,606.00	Ground Elevation (ft) 6,595.00	KB-Ground Distance (ft) 11.00	Total Depth (ftKB) 4,220.0	

PBTDs		Wellbore Name	Date	Depth (ftKB)
Original Hole				4,175.0



Wellbore Sections

Section	Size (in)	Act Top (ftKB)	Act Btm (ftKB)
Conductor	20	0.0	50.0
Surface	12 1/4	50.0	1,764.0
Production	7	1,764.0	4,220.0

Casing

Casing Description Conductor	Run Date 12/28/2006 15:00	Set Depth (ftKB) 50.0	Wellbore Original Hole					
Centralizers		Scratchers						
Jts	Item Description	OD (in)	ID (in)	Wt (lbs/ft)	Grade	Len (ft)	Top (ftKB)	Btm (ftKB)
1	Casing Joints	14		40.00	Sch-...	50.00	0.0	50.0

Cement: Conductor Cement

Cementing Start Date 12/28/2006	Cementing End Date 12/28/2006	Wellbore Original Hole
Evaluation Method	Cement Evaluation Results	

Comment
Cement cond. casing

Cement Stages: Conductor Cement

Top (ftKB) 0.0	Bottom (ftKB) 50.0	Full Return? Yes	Cmnt Rtn... 1.0	Top Plug? No	Bottom Plug? No
Q (start) (bbl/min)	Q (end) (bbl/min)	Q (avg) (bbl/min)		P (final) (psi)	Plug Bump Pressure (psi)
Pipe Reciprocated? No	Stroke (ft)	Reciprocation Rate (spm)	Pipe Rotated? No	Pipe RPM (rpm)	
Depth tagged (ftKB)	Tag Method	Plug Depth (ftKB)	Drill Out Diameter (in)	Drill Out Date	

Cement Fluids: Conductor Cement

Fluid Type Cement/Redi-mix	Fluid Description Redi-mix.	Amount (s... 25	Class Redi-mix	Volume Pumped (bb)
Estimated Top (ftKB) 0.0	Estimated Bottom (ftKB) 50.0	Yield (ft³/sack)		Free Water (%)
Density (lb/gal)	Plastic Viscosity (cp)	Thickening Time (hrs)	1st Compressive Strength (psi)	

Cement Fluid Additives

Add	Type	Conc



Casing, Liner and Cement Summary

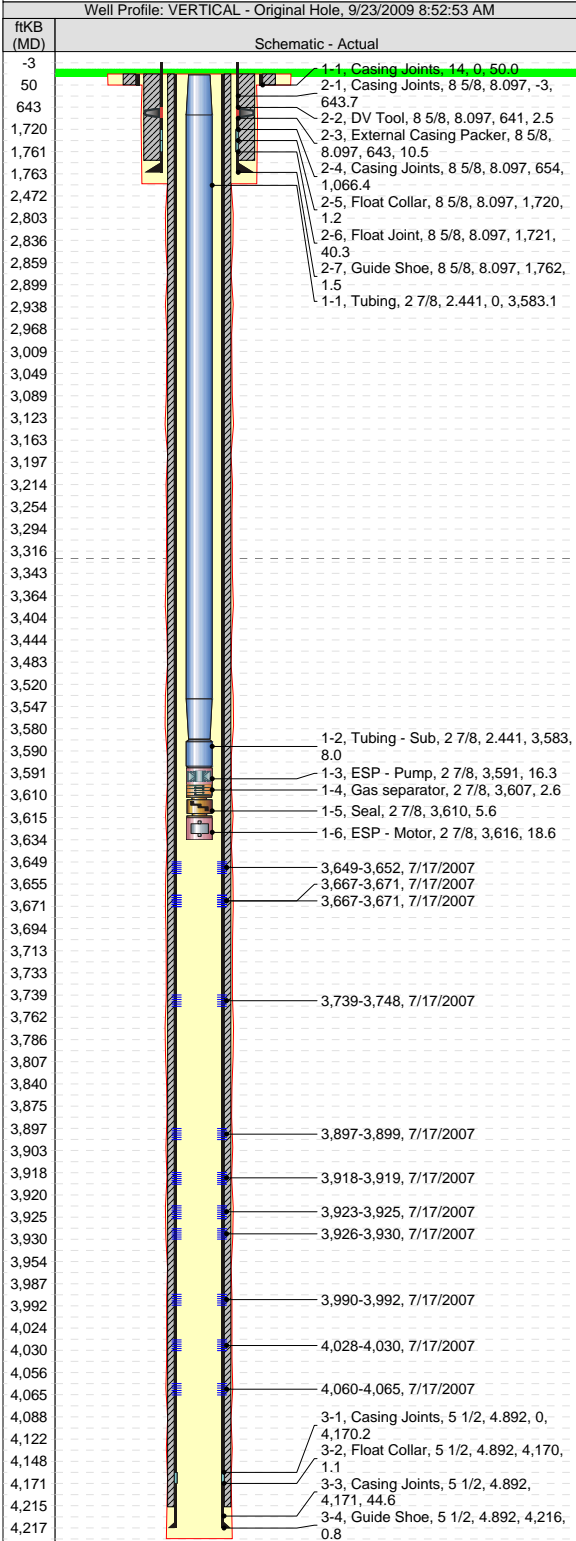
Surface

Well Name: Adairsville 13-1

Western Division

API/UWI 05-081-07362-0000	Field Name LAY CREEK	QTR/QTR NWSW	Section 1	Township 7N	Range 93W
Spud Date 2/15/2007	Original KB Elevation (ft) 6,606.00	Ground Elevation (ft) 6,595.00	KB-Ground Distance (ft) 11.00	Total Depth (ftKB) 4,220.0	

PBTDs	Wellbore Name	Date	Depth (ftKB)
Original Hole			4,175.0



Wellbore Sections

Section	Size (in)	Act Top (ftKB)	Act Btm (ftKB)
Conductor	20	0.0	50.0
Surface	12 1/4	50.0	1,764.0
Production	7	1,764.0	4,220.0

Casing

Casing Description Surface	Run Date 2/18/2007 00:00	Set Depth (ftKB) 1,763.0	Wellbore Original Hole
Centralizers 4	Scratchers		

Jts	Item Description	OD (in)	ID (in)	Wt (lbs/ft)	Grade	Len (ft)	Top (ftKB)	Btm (ftKB)
15	Casing Joints	8 5/8	8.097	24.00	J-55	643.65	-3.0	640.7
1	DV Tool	8 5/8	8.097	24.00	J-55	2.50	640.7	643.2
1	External Casing Packer	8 5/8	8.097	24.00	J-55	10.50	643.2	653.7
26	Casing Joints	8 5/8	8.097	24.00	J-55	1,066.39	653.7	1,720.1
1	Float Collar	8 5/8	8.097			1.16	1,720.1	1,721.2
1	Float Joint	8 5/8	8.097	24.00	J-55	40.29	1,721.2	1,761.5
1	Guide Shoe	8 5/8	8.097			1.50	1,761.5	1,763.0

Cement: Surface Casing Cement

Cementing Start Date 2/19/2007	Cementing End Date 2/19/2007	Wellbore Original Hole
Evaluation Method	Cement Evaluation Results	

Comment

CEMENTED FIRST AND SECOND STAGE, CEMENT FELL BACK 210', RAN 1". CEMENT TO SURFACE.

Cement Stages: Surface Casing Cement

Top (ftKB)	Bottom (ftKB)	Full Return?	Cmnt Rtn...	Top Plug?	Bottom Plug?
0.0	1,762.0	No		Yes	No
Q (start) (bbl/min)	Q (end) (bbl/min)	Q (avg) (bbl/min)		P (final) (psi)	Plug Bump Pressure (psi)
Pipe Reciprocated? No	Stroke (ft)	Reciprocation Rate (spm)		Pipe Rotated? No	Pipe RPM (rpm)
Depth tagged (ftKB)	Tag Method	Plug Depth (ftKB)		Drill Out Diameter (in)	Drill Out Date

Cement Fluids: Surface Casing Cement

Fluid Type	Fluid Description	Amount (s...)	Class	Volume Pumped (bbl)
Estimated Top (ftKB)	Estimated Bottom (ftKB)	Yield (ft³/sack)		Mix H2O Ratio (gal/sack)
Density (lb/gal)	Plastic Viscosity (cp)	Thickening Time (hrs)		1st Compressive Strength (psi)

Cement Fluid Additives

Add	Type	Conc

Casing, Liner and Cement Summary

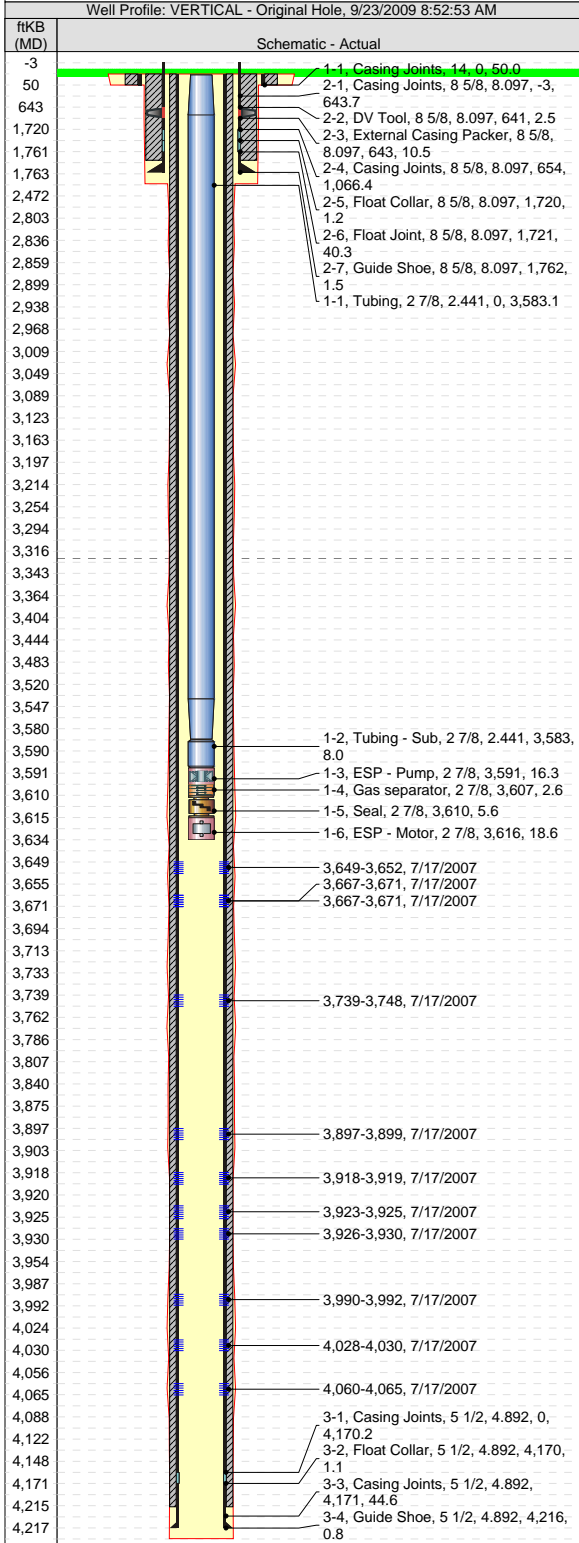
Production

Well Name: Adairsville 13-1

Western Division

API/UWI 05-081-07362-0000	Field Name LAY CREEK	QTR/QTR NWSW	Section 1	Township 7N	Range 93W
Spud Date 2/15/2007	Original KB Elevation (ft) 6,606.00	Ground Elevation (ft) 6,595.00	KB-Ground Distance (ft) 11.00	Total Depth (ftKB) 4,220.0	

PBTDs		
Wellbore Name	Date	Depth (ftKB)
Original Hole		4,175.0



Wellbore Sections			
Section	Size (in)	Act Top (ftKB)	Act Btm (ftKB)
Conductor	20	0.0	50.0
Surface	12 1/4	50.0	1,764.0
Production	7	1,764.0	4,220.0

Casing								
Casing Description		Run Date	Set Depth (ftKB)		Wellbore			
Production		3/6/2007 09:30	4,216.6		Original Hole			
Centralizers				Scratchers				
18								
Jts	Item Description	OD (in)	ID (in)	Wt (lbs/ft)	Grade	Len (ft)	Top (ftKB)	Btm (ftKB)
94	Casing Joints	5 1/2	4.892	17.00	J-55	4,170.17	0.0	4,170.2
1	Float Collar	5 1/2	4.892	17.00	J-55	1.08	4,170.2	4,171.3
1	Casing Joints	5 1/2	4.892	17.00	J-55	44.56	4,171.3	4,215.8
1	Guide Shoe	5 1/2	4.892	17.00	J55	0.75	4,215.8	4,216.6

Cement: Production Casing Cement		
Cementing Start Date 3/6/2007	Cementing End Date 3/6/2007	Wellbore Original Hole
Evaluation Method	Cement Evaluation Results	
Comment		

Cement Stages: Production Casing Cement					
Top (ftKB) 0.0	Bottom (ftKB) 4,215.0	Full Return?	Cmnt Rtn...	Top Plug?	Bottom Plug?
Q (start) (bbl/min)	Q (end) (bbl/min)	Q (avg) (bbl/min)		P (final) (psi)	Plug Bump Pressure (psi)
Pipe Reciprocated?	Stroke (ft)	Reciprocation Rate (spm)	Pipe Rotated?	Pipe RPM (rpm)	
Depth tagged (ftKB)	Tag Method	Plug Depth (ftKB)	Drill Out Diameter (in)	Drill Out Date	

Cement Fluids: Production Casing Cement				
Fluid Type	Fluid Description	Amount (s...	Class	Volume Pumped (bbl)
Estimated Top (ftKB)	Estimated Bottom (ftKB)	Yield (ft³/sack)	Mix H2O Ratio (gal/sack)	Free Water (%)
Density (lb/gal)	Plastic Viscosity (cp)	Thickening Time (hrs)	1st Compressive Strength (psi)	

Cement Fluid Additives		
Add	Type	Conc