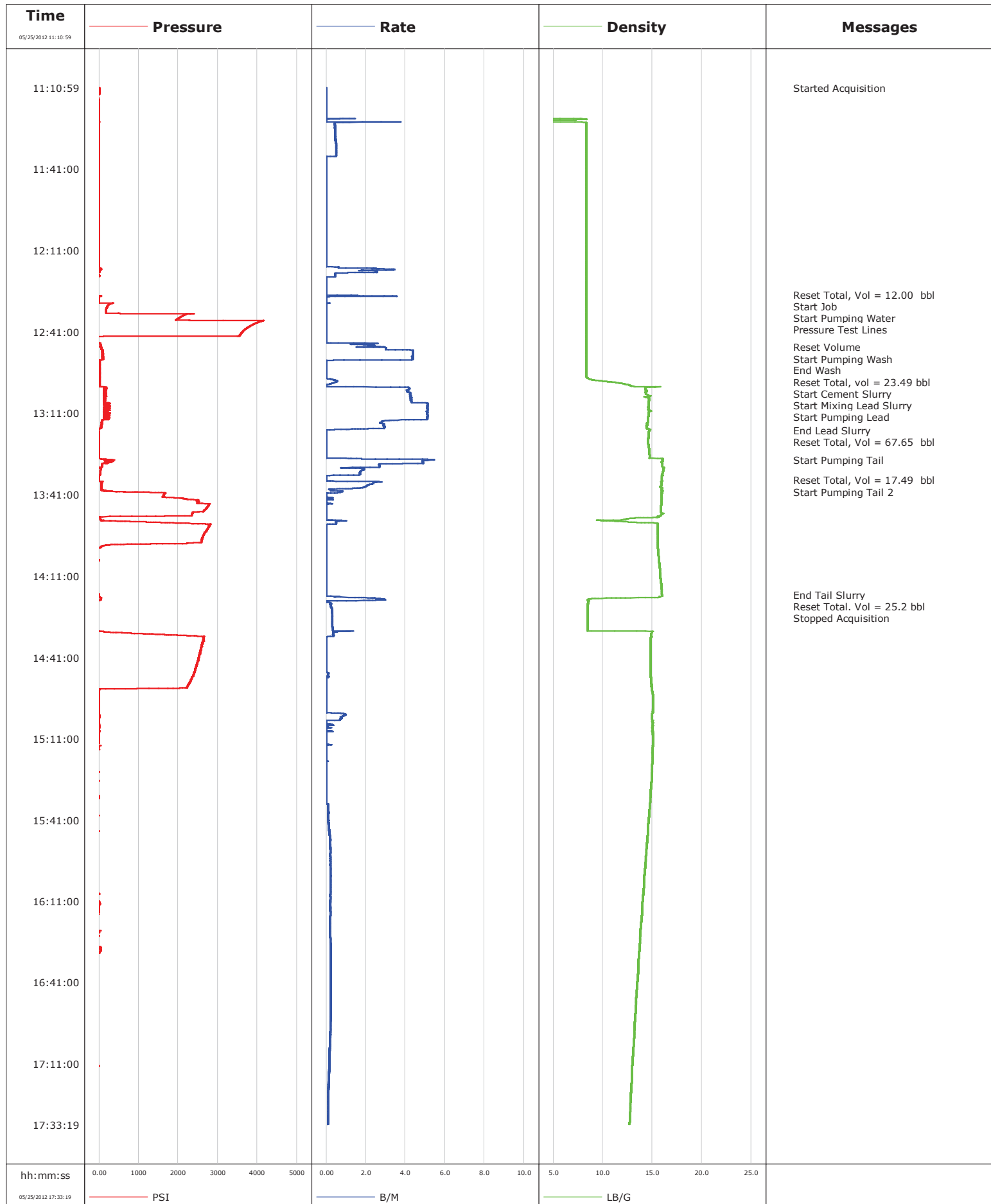


Well	Searchy Gulch 1-27	Client	Shell
Field	WFU/Swan	SIR No.	C62J-00072
Engineer	Dhierda Utiya	Job Type	10.75 Surface
Country	United States	Job Date	05-25-2012





Cementing Service Report

				Customer Shell Rockies			Job Number C62J-00072								
Well Searchy Gulch 1-27 1-27			Location (legal) Sec.27 T5N-R90W			Schlumberger Location Denver			Job Start May/25/2012						
Field WFU/Swan		Formation Name/Type			Deviation		Bit Size		Well MD 800.0 ft		Well TVD 800.0 ft				
County Moffatt		State/Province Colorado			BHP 563 psi		BHST 80 degF		BHCT 80 degF		Pore Press. Gradient				
Well Master		API/UWI 05081077190000													
Rig Name Nabors #94		Drilled For Oil		Service Via Land		Casing/Liner									
Offshore Zone		Well Class New		Well Type Development		Depth, ft		Size, in		Weight, lb/ft		Grade		Thread	
						800.0		10.750		40.5		N/A		8RD	
Drilling Fluid Type		Max. Density		Plastic Viscosity		0.0		0.000		0.0					
						Tubing/Drill Pipe									
Service Line Cementing		Job Type Cem Surface Casing				Depth,		Size,		Weight,		Grade		Thread	
Max. Allowed Tub. Press 3130 psi		Max. Allowed Ann. Press 1580 psi		WH Connection 10 3/4" 40.5#		Perforations/Open Hole									
Service Instructions						Top,		Bottom,				No. of Shots		Total Interval	
Treat Down Casing				Displacement 0.0 bbl				Packer Type				Packer Depth			
Tubing Vol.				Casing Vol. 78.4 bbl				Annular Vol. 90.9 bbl				Openhole Vol. 80.7 bbl			
Casing/Tubing Secured <input checked="" type="checkbox"/>		1 Hole Vol. Circulated prior to Cement <input type="checkbox"/>		Casing Tools				Squeeze Job							
Lift Pressure				Shoe Type				Squeeze Type							
Pipe Rotated <input type="checkbox"/>		Pipe Reciprocated <input type="checkbox"/>		Shoe Depth 802.0 ft				Tool Type							
No. Centralizers		Top Plugs 1		Bottom Plugs		Stage Tool Type				Tool Depth					
Cement Head Type Single				Stage Tool Depth				Tail Pipe Size							
Job Scheduled For May/25/2012 03:00		Arrived on Location May/25/2012 03:00		Leave Location May/25/2012 19:00		Collar Type				Tail Pipe Depth					
						Collar Depth 758.6 ft				Sqz. Total Vol.					
Date	Time 24-hr clock	Treating Pressure PSI		Flow Rate B/M		Density LB/G		Volume BBL		Message					
05/25/2012	11:10:59									Started Acquisition					
05/25/2012	11:10:59	0		0.0		0.00		0.0							
05/25/2012	11:13:59	-13		0.0		0.01		0.0							
05/25/2012	11:15:29	-12		0.0		0.01		0.0							
05/25/2012	11:16:59	-12		0.0		0.01		0.0							
05/25/2012	11:18:29	-12		0.0		0.01		0.0							
05/25/2012	11:19:59	-12		0.0		0.01		0.0							
05/25/2012	11:21:29	-12		0.0		0.01		0.0							
05/25/2012	11:22:59	-12		0.0		0.11		0.2							
05/25/2012	11:24:29	-6		0.4		8.34		0.9							
05/25/2012	11:25:59	-6		0.4		8.34		1.6							
05/25/2012	11:27:29	-6		0.5		8.35		2.2							
05/25/2012	11:28:59	-6		0.5		8.35		2.9							
05/25/2012	11:30:29	-7		0.5		8.34		3.6							
05/25/2012	11:31:59	-6		0.5		8.35		4.4							
05/25/2012	11:33:29	-6		0.5		8.35		5.1							
05/25/2012	11:34:59	-6		0.5		8.35		5.9							
05/25/2012	11:36:29	-9		0.0		8.35		6.5							
05/25/2012	11:37:59	-10		0.0		8.35		6.5							
05/25/2012	11:39:29	-9		0.0		8.35		6.5							
05/25/2012	11:40:59	-9		0.0		8.35		6.5							

Well			Field		Job Start	Customer		Job Number
Searchy Gulch 1-27 1-27			WFU/Swan		May/25/2012	Shell Rockies		C62J-00072
Date	Time 24-hr clock	Treating Pressure PSI	Flow Rate B/M	Density LB/G	Volume BBL	Message		
05/25/2012	11:43:59	-9	0.0	8.35	6.5			
05/25/2012	11:45:29	-9	0.0	8.35	6.5			
05/25/2012	11:46:59	-9	0.0	8.35	6.5			
05/25/2012	11:48:29	-9	0.0	8.35	6.5			
05/25/2012	11:49:59	-9	0.0	8.35	6.5			
05/25/2012	11:51:29	-9	0.0	8.35	6.5			
05/25/2012	11:52:59	-9	0.0	8.35	6.5			
05/25/2012	11:54:29	-9	0.0	8.35	6.5			
05/25/2012	11:55:59	-9	0.0	8.35	6.5			
05/25/2012	11:57:29	-9	0.0	8.35	6.5			
05/25/2012	11:58:59	-10	0.0	8.35	6.5			
05/25/2012	12:00:29	-9	0.0	8.35	6.5			
05/25/2012	12:01:59	-9	0.0	8.35	6.5			
05/25/2012	12:04:59	-9	0.0	8.35	6.5			
05/25/2012	12:06:29	-10	0.0	8.35	6.5			
05/25/2012	12:07:59	-9	0.0	8.35	6.5			
05/25/2012	12:09:29	-9	0.0	8.35	6.5			
05/25/2012	12:10:59	-9	0.0	8.35	6.5			
05/25/2012	12:12:29	-9	0.0	8.35	6.5			
05/25/2012	12:15:29	-9	0.0	8.35	6.5			
05/25/2012	12:16:59	-9	0.0	8.35	6.5			
05/25/2012	12:18:29	24	2.4	8.35	9.4			
05/25/2012	12:19:59	-11	0.5	8.34	11.6			
05/25/2012	12:21:29	-15	0.0	8.34	12.0			
05/25/2012	12:22:59	-15	0.0	8.34	12.0			
05/25/2012	12:24:29	-15	0.0	8.34	12.0			
05/25/2012	12:25:59	-23	0.0	8.34	12.0			
05/25/2012	12:27:12					Reset Total, Vol = 12.00 bbl		
05/25/2012	12:27:12	-23	0.0	8.34	12.0			
05/25/2012	12:27:19					Start Job		
05/25/2012	12:27:19	-23	0.0	8.34	0.0			
05/25/2012	12:27:22					Start Pumping Water		
05/25/2012	12:27:22	-23	0.0	8.34	0.0			
05/25/2012	12:27:29	-23	0.0	8.34	0.0			
05/25/2012	12:28:21					Pressure Test Lines		
05/25/2012	12:28:21	-7	0.0	8.34	0.9			
05/25/2012	12:28:59	-9	0.0	8.34	0.9			
05/25/2012	12:30:29	355	0.2	8.34	0.9			
05/25/2012	12:31:59	197	0.0	8.34	0.9			
05/25/2012	12:33:29	177	0.0	8.34	0.9			
05/25/2012	12:34:59	2125	0.0	8.34	0.9			
05/25/2012	12:36:29	1957	0.0	8.34	0.9			
05/25/2012	12:37:59	3937	0.0	8.35	0.9			
05/25/2012	12:39:29	3749	0.0	8.35	0.9			
05/25/2012	12:40:59	3622	0.0	8.34	0.9			
05/25/2012	12:42:29	3543	0.0	8.34	0.9			
05/25/2012	12:43:59	-15	0.0	8.35	0.9			
05/25/2012	12:45:29	30	1.5	8.34	1.6			
05/25/2012	12:46:35					Reset Volume		
05/25/2012	12:46:35	10	2.5	8.35	4.0			
05/25/2012	12:46:40					Start Pumping Wash		
05/25/2012	12:46:40	42	1.5	8.35	4.1			
05/25/2012	12:46:59	52	3.0	8.35	5.0			
05/25/2012	12:48:29	81	4.4	8.35	10.7			

Well			Field		Job Start	Customer	Job Number
Searchy Gulch 1-27 1-27			WFU/Swan		May/25/2012	Shell Rockies	C62J-00072
Date	Time 24-hr clock	Treating Pressure PSI	Flow Rate B/M	Density LB/G	Volume BBL	Message	
05/25/2012	12:51:29	-8	0.4	8.35	23.5		
05/25/2012	12:52:18					End Wash	
05/25/2012	12:52:18	21	0.0	8.35	23.5		
05/25/2012	12:52:19					Reset Total, vol = 23.49 bbl	
05/25/2012	12:52:19	21	0.0	8.35	23.5		
05/25/2012	12:52:22					Start Cement Slurry	
05/25/2012	12:52:22	21	0.0	8.35	23.5		
05/25/2012	12:52:24					Start Mixing Lead Slurry	
05/25/2012	12:52:24	20	0.0	8.35	23.5		
05/25/2012	12:52:59	20	0.0	8.35	0.0		
05/25/2012	12:54:29	23	0.0	8.35	0.0		
05/25/2012	12:55:59	21	0.0	8.35	0.0		
05/25/2012	12:57:29	17	0.0	8.33	0.0		
05/25/2012	12:58:59	18	0.5	9.48	0.2		
05/25/2012	13:00:29	16	0.1	12.47	0.8		
05/25/2012	13:01:21					Start Pumping Lead	
05/25/2012	13:01:21	149	2.5	15.26	1.0		
05/25/2012	13:01:59	111	4.2	14.28	3.6		
05/25/2012	13:03:29	125	4.2	14.34	9.8		
05/25/2012	13:04:59	146	4.3	14.20	16.1		
05/25/2012	13:06:29	152	4.3	14.65	22.5		
05/25/2012	13:07:59	140	5.1	14.63	29.6		
05/25/2012	13:09:29	212	5.1	14.62	37.3		
05/25/2012	13:10:59	166	5.1	14.62	45.0		
05/25/2012	13:12:29	125	5.1	14.58	52.6		
05/25/2012	13:13:59	65	2.8	14.59	59.2		
05/25/2012	13:15:29	50	2.9	14.46	63.5		
05/25/2012	13:16:59	-9	1.1	14.74	67.5		
05/25/2012	13:17:27					End Lead Slurry	
05/25/2012	13:17:27	-17	0.0	14.69	67.7		
05/25/2012	13:17:44					Reset Total, Vol = 67.65 bbl	
05/25/2012	13:17:44	-6	0.0	14.66	67.7		
05/25/2012	13:18:29	-6	0.0	14.63	0.0		
05/25/2012	13:19:59	-3	0.0	14.61	0.0		
05/25/2012	13:21:29	-4	0.0	14.56	0.0		
05/25/2012	13:22:59	-4	0.0	14.62	0.0		
05/25/2012	13:24:29	-5	0.0	14.67	0.0		
05/25/2012	13:25:59	-4	0.0	14.70	0.0		
05/25/2012	13:27:29	-19	0.0	14.71	0.0		
05/25/2012	13:28:10					Start Pumping Tail	
05/25/2012	13:28:10	319	5.4	16.00	1.6		
05/25/2012	13:28:59	209	4.9	15.93	5.7		
05/25/2012	13:30:29	72	2.7	15.99	11.3		
05/25/2012	13:31:59	37	1.8	16.09	14.2		
05/25/2012	13:33:29	34	1.7	16.00	16.8		
05/25/2012	13:34:59	-3	0.0	15.95	17.5		
05/25/2012	13:35:38					Reset Total, Vol = 17.49 bbl	
05/25/2012	13:35:38	-3	0.0	15.95	17.5		
05/25/2012	13:36:29	68	2.5	15.91	0.8		
05/25/2012	13:36:48					Start Pumping Tail 2	
05/25/2012	13:36:48	61	2.4	15.90	1.6		
05/25/2012	13:37:59	52	2.0	15.85	4.2		
05/25/2012	13:39:29	63	0.4	15.92	6.0		
05/25/2012	13:40:59	1638	0.0	15.93	6.6		

Well			Field		Job Start	Customer		Job Number
Searchy Gulch 1-27 1-27			WFU/Swan		May/25/2012	Shell Rockies		C62J-00072
Date	Time 24-hr clock	Treating Pressure PSI	Flow Rate B/M	Density LB/G	Volume BBL	Message		
05/25/2012	13:43:59	2495	0.0	15.93	6.8			
05/25/2012	13:45:29	2743	0.0	15.85	6.8			
05/25/2012	13:46:59	2646	0.0	15.88	6.8			
05/25/2012	13:48:29	2341	0.0	15.97	6.8			
05/25/2012	13:49:59	28	0.0	12.49	6.8			
05/25/2012	13:51:29	1870	0.5	15.11	7.4			
05/25/2012	13:52:59	2766	0.0	15.51	7.7			
05/25/2012	13:54:29	2707	0.0	15.52	7.7			
05/25/2012	13:55:59	2636	0.0	15.54	7.7			
05/25/2012	13:57:29	2598	0.0	15.55	7.7			
05/25/2012	13:58:59	2222	0.0	15.56	7.7			
05/25/2012	14:00:29	49	0.0	15.58	7.7			
05/25/2012	14:01:59	-22	0.0	15.60	7.7			
05/25/2012	14:03:29	-23	0.0	15.63	7.7			
05/25/2012	14:04:59	-23	0.0	15.64	7.7			
05/25/2012	14:06:29	-23	0.0	15.69	7.7			
05/25/2012	14:07:59	-22	0.0	15.73	7.7			
05/25/2012	14:09:29	-23	0.0	15.77	7.7			
05/25/2012	14:10:59	-23	0.0	15.81	7.7			
05/25/2012	14:12:29	-23	0.0	15.84	7.7			
05/25/2012	14:13:59	-22	0.0	15.89	7.7			
05/25/2012	14:15:29	-23	0.0	15.92	7.7			
05/25/2012	14:16:59	-23	0.0	15.96	7.7			
05/25/2012	14:18:00					End Tail Slurry		
05/25/2012	14:18:00					Reset Total. Vol = 25.2 bbl		
05/25/2012	14:18:00	-18	0.0	15.97	7.7			
05/25/2012	14:18:29	-22	0.0	16.02	7.7			
05/25/2012	14:19:59	11	2.7	8.46	10.6			
05/25/2012	14:21:29	-18	0.2	8.48	11.2			
05/25/2012	14:22:59	-18	0.3	8.46	11.6			
05/25/2012	14:24:29	-18	0.3	8.46	12.0			
05/25/2012	14:25:59	-18	0.3	8.46	12.5			
05/25/2012	14:27:29	-17	0.3	8.45	12.9			
05/25/2012	14:28:59	-18	0.3	8.45	13.4			
05/25/2012	14:30:29	-20	0.3	8.45	13.9			
05/25/2012	14:31:59	567	0.4	14.91	14.6			
05/25/2012	14:33:29	2641	0.0	14.93	15.1			
05/25/2012	14:34:59	2628	0.0	14.84	15.1			
05/25/2012	14:36:29	2596	0.0	14.84	15.1			
05/25/2012	14:37:59	2565	0.0	14.84	15.1			
05/25/2012	14:39:29	2542	0.0	14.85	15.1			
05/25/2012	14:40:59	2517	0.0	14.85	15.1			
05/25/2012	14:42:29	2492	0.0	14.84	15.1			
05/25/2012	14:43:59	2460	0.0	14.85	15.1			
05/25/2012	14:45:29	2430	0.0	14.84	15.1			
05/25/2012	14:46:59	2397	0.1	14.83	15.1			
05/25/2012	14:48:29	2340	0.1	14.87	15.3			
05/25/2012	14:49:59	2302	0.0	14.89	15.3			
05/25/2012	14:51:29	2241	0.0	14.93	15.3			
05/25/2012	14:52:59	3	0.0	14.93	15.3			
05/25/2012	14:54:29	-5	0.0	15.03	15.3			
05/25/2012	14:55:59	-8	0.0	15.08	15.3			
05/25/2012	14:57:29	-9	0.0	15.08	15.3			
05/25/2012	14:58:59	-10	0.0	15.07	15.3			

Well			Field		Job Start	Customer		Job Number
Searchy Gulch 1-27 1-27			WFU/Swan		May/25/2012	Shell Rockies		C62J-00072
Date	Time 24-hr clock	Treating Pressure PSI	Flow Rate B/M	Density LB/G	Volume BBL	Message		
05/25/2012	15:01:59	-9	0.9	14.99	15.6			
05/25/2012	15:03:29	-0	0.8	14.98	16.9			
05/25/2012	15:04:59	-3	0.0	15.01	17.5			
05/25/2012	15:06:29	-1	0.0	15.03	17.6			
05/25/2012	15:07:59	-1	0.0	15.05	17.7			
05/25/2012	15:09:29	-3	0.0	15.07	17.8			
05/25/2012	15:10:59	-3	0.0	15.06	17.8			
05/25/2012	15:12:29	-4	0.0	15.07	17.8			
05/25/2012	15:13:59	-12	0.0	15.05	17.8			
05/25/2012	15:15:29	-20	0.0	15.02	17.8			
05/25/2012	15:16:59	-15	0.0	15.02	17.8			
05/25/2012	15:18:29	-21	0.0	15.02	17.8			
05/25/2012	15:19:59	-19	0.0	15.01	17.8			
05/25/2012	15:21:29	-20	0.0	14.98	17.8			
05/25/2012	15:22:59	-20	0.0	14.96	17.8			
05/25/2012	15:24:29	-24	0.0	14.94	17.8			
05/25/2012	15:25:59	-21	0.0	14.91	17.8			
05/25/2012	15:27:29	-19	0.0	14.90	17.8			
05/25/2012	15:28:59	-18	0.0	14.87	17.8			
05/25/2012	15:30:29	-16	0.0	14.84	17.8			
05/25/2012	15:31:59	-15	0.0	14.81	17.8			
05/25/2012	15:33:29	-16	0.0	14.79	17.8			
05/25/2012	15:34:59	-17	0.0	14.75	17.8			
05/25/2012	15:36:29	-17	0.1	14.72	18.0			
05/25/2012	15:37:59	-18	0.1	14.69	18.2			
05/25/2012	15:39:29	-16	0.1	14.67	18.3			
05/25/2012	15:40:59	-19	0.1	14.64	18.5			
05/25/2012	15:42:29	-20	0.1	14.60	18.7			
05/25/2012	15:43:59	-21	0.1	14.57	18.9			
05/25/2012	15:45:29	-21	0.1	14.54	19.1			
05/25/2012	15:46:59	-21	0.2	14.51	19.3			
05/25/2012	15:48:29	-18	0.2	14.48	19.6			
05/25/2012	15:49:59	-19	0.2	14.45	19.9			
05/25/2012	15:51:29	-19	0.2	14.42	20.2			
05/25/2012	15:52:59	-19	0.2	14.38	20.5			
05/25/2012	15:54:29	-19	0.2	14.36	20.8			
05/25/2012	15:55:59	-19	0.2	14.33	21.1			
05/25/2012	15:57:29	-19	0.2	14.29	21.4			
05/25/2012	15:58:59	-19	0.2	14.26	21.7			
05/25/2012	16:00:29	-19	0.2	14.23	22.0			
05/25/2012	16:01:59	-19	0.2	14.20	22.4			
05/25/2012	16:03:29	-19	0.2	14.17	22.7			
05/25/2012	16:04:59	-19	0.2	14.14	23.0			
05/25/2012	16:06:29	-20	0.2	14.11	23.3			
05/25/2012	16:07:59	-20	0.2	14.08	23.6			
05/25/2012	16:09:29	-20	0.2	14.05	23.9			
05/25/2012	16:10:59	-13	0.2	14.02	24.2			
05/25/2012	16:12:29	-0	0.2	13.99	24.5			
05/25/2012	16:13:59	-7	0.2	13.96	24.8			
05/25/2012	16:15:29	-17	0.2	13.94	25.1			
05/25/2012	16:16:59	-19	0.2	13.91	25.4			
05/25/2012	16:18:29	-21	0.2	13.88	25.7			
05/25/2012	16:19:59	-21	0.2	13.85	26.0			
05/25/2012	16:21:29	-22	0.2	13.82	26.2			

Well			Field		Job Start	Customer		Job Number
Searchy Gulch 1-27 1-27			WFU/Swan		May/25/2012	Shell Rockies		C62J-00072
Date	Time 24-hr clock	Treating Pressure PSI	Flow Rate B/M	Density LB/G	Volume BBL	Message		
05/25/2012	16:24:29	-21	0.2	13.76	26.8			
05/25/2012	16:25:59	-23	0.2	13.74	27.1			
05/25/2012	16:27:29	-25	0.2	13.71	27.4			
05/25/2012	16:28:59	41	0.2	13.69	27.8			
05/25/2012	16:30:29	-23	0.2	13.66	28.1			
05/25/2012	16:31:59	-25	0.2	13.63	28.5			
05/25/2012	16:33:29	-25	0.2	13.61	28.8			
05/25/2012	16:34:59	-25	0.2	13.58	29.2			
05/25/2012	16:36:29	-26	0.2	13.55	29.5			
05/25/2012	16:37:59	-26	0.2	13.53	29.9			
05/25/2012	16:39:29	-26	0.2	13.50	30.2			
05/25/2012	16:40:59	-26	0.2	13.48	30.6			
05/25/2012	16:42:29	-26	0.2	13.45	30.9			
05/25/2012	16:43:59	-27	0.2	13.43	31.3			
05/25/2012	16:45:29	-26	0.2	13.40	31.6			
05/25/2012	16:46:59	-27	0.2	13.37	32.0			
05/25/2012	16:48:29	-27	0.2	13.35	32.4			
05/25/2012	16:49:59	-27	0.2	13.32	32.7			
05/25/2012	16:51:29	-27	0.2	13.30	33.1			
05/25/2012	16:52:59	-28	0.2	13.28	33.4			
05/25/2012	16:54:29	-29	0.2	13.25	33.7			
05/25/2012	16:55:59	-29	0.2	13.23	34.1			
05/25/2012	16:57:29	-29	0.2	13.20	34.4			
05/25/2012	16:58:59	-29	0.2	13.18	34.7			
05/25/2012	17:00:29	-29	0.2	13.16	35.0			
05/25/2012	17:01:59	-29	0.2	13.13	35.3			
05/25/2012	17:03:29	-29	0.2	13.11	35.6			
05/25/2012	17:04:59	-29	0.2	13.09	35.8			
05/25/2012	17:06:29	-29	0.2	13.06	36.1			
05/25/2012	17:07:59	-29	0.2	13.04	36.3			
05/25/2012	17:09:29	-29	0.2	13.02	36.6			
05/25/2012	17:10:59	-29	0.2	13.00	36.8			
05/25/2012	17:12:29	-29	0.2	12.98	37.0			
05/25/2012	17:13:59	-29	0.1	12.95	37.3			
05/25/2012	17:15:29	-29	0.1	12.93	37.5			
05/25/2012	17:16:59	-29	0.1	12.91	37.7			
05/25/2012	17:18:29	-29	0.1	12.89	37.9			
05/25/2012	17:19:59	-30	0.1	12.87	38.1			
05/25/2012	17:21:29	-29	0.1	12.85	38.2			
05/25/2012	17:22:59	-30	0.1	12.82	38.4			
05/25/2012	17:24:29	-29	0.1	12.80	38.6			
05/25/2012	17:25:59	-30	0.1	12.78	38.8			
05/25/2012	17:27:29	-30	0.1	12.76	38.9			
05/25/2012	17:28:59	-30	0.1	12.74	39.1			
05/25/2012	17:30:29	-30	0.1	12.72	39.2			
05/25/2012	17:31:59	-30	0.1	12.70	39.4			

Well Searchy Gulch 1-27 1-27	Field WFU/Swan	Job Start May/25/2012	Customer Shell Rockies	Job Number C62J-00072
--	--------------------------	---------------------------------	----------------------------------	---------------------------------

Post Job Summary

Average Pump Rates, bbl/min					Volume of Fluid Injected, bbl			
Slurry 0.8	N2	Mud 0.0	Maximum Rate 5.5		Total Slurry 111.0	Mud 0.0	Spacer 20.0	N2
Treating Pressure Summary, psi					Breakdown Fluid			
Maximum 3130	Final -30	Average 1174	Bump Plug to	Breakdown	Type	Volume		Density
Avg. N2 Percent		Designed Slurry Volume 111.0 bbl	Displacement 0.0 bbl	Mix Water Temp 70 degF	Cement Circulated to Surface? <input type="checkbox"/>	Volume		
					Washed Thru Perfs <input type="checkbox"/>	To		
Customer or Authorized Representative			Schlumberger Supervisor Dhierda Utiya			Circulation Lost <input type="checkbox"/>	Job Completed <input type="checkbox"/>	
						-		-



Service Order #:	C62J-00072
Date:	May/25/2012
Operating Time:	0.0
Client Rep:	Shell Rockies
Schlumberger Engineer:	Dhierda Utiya
Schlumberger FSM:	

To be completed by Company Rep. Please answer Y (Yes) or N (No) and add any comments below.

2	Design / Preparation					
2a	Program incl. job simulation (CemCADE) & pump schedule / tool hydraulic calcs	3	yes <input type="checkbox"/>	no <input checked="" type="checkbox"/>		0
2b	Equipment maintenance schedule completed / Green tagged	2	yes <input type="checkbox"/>	no <input checked="" type="checkbox"/>		0
2c	All materials and equipment required for job/contingency checked & on location	2	yes <input type="checkbox"/>	no <input checked="" type="checkbox"/>		0
2d	Safety / pre-job meeting conducted with all involved present	2	yes <input type="checkbox"/>	no <input checked="" type="checkbox"/>		0
Sub-total						0%

4	Evaluation					
4a	Main job objective achieved with no consequential non-productive time	10	yes <input type="checkbox"/>	no <input checked="" type="checkbox"/>		0
					Sub-total	0%

Comments: (Please include a brief explanation for a "NO" response and summarize any innovations attempted on this well.)

Client:	Schlumberger:
Client Signature:	Schlumberger Signature: