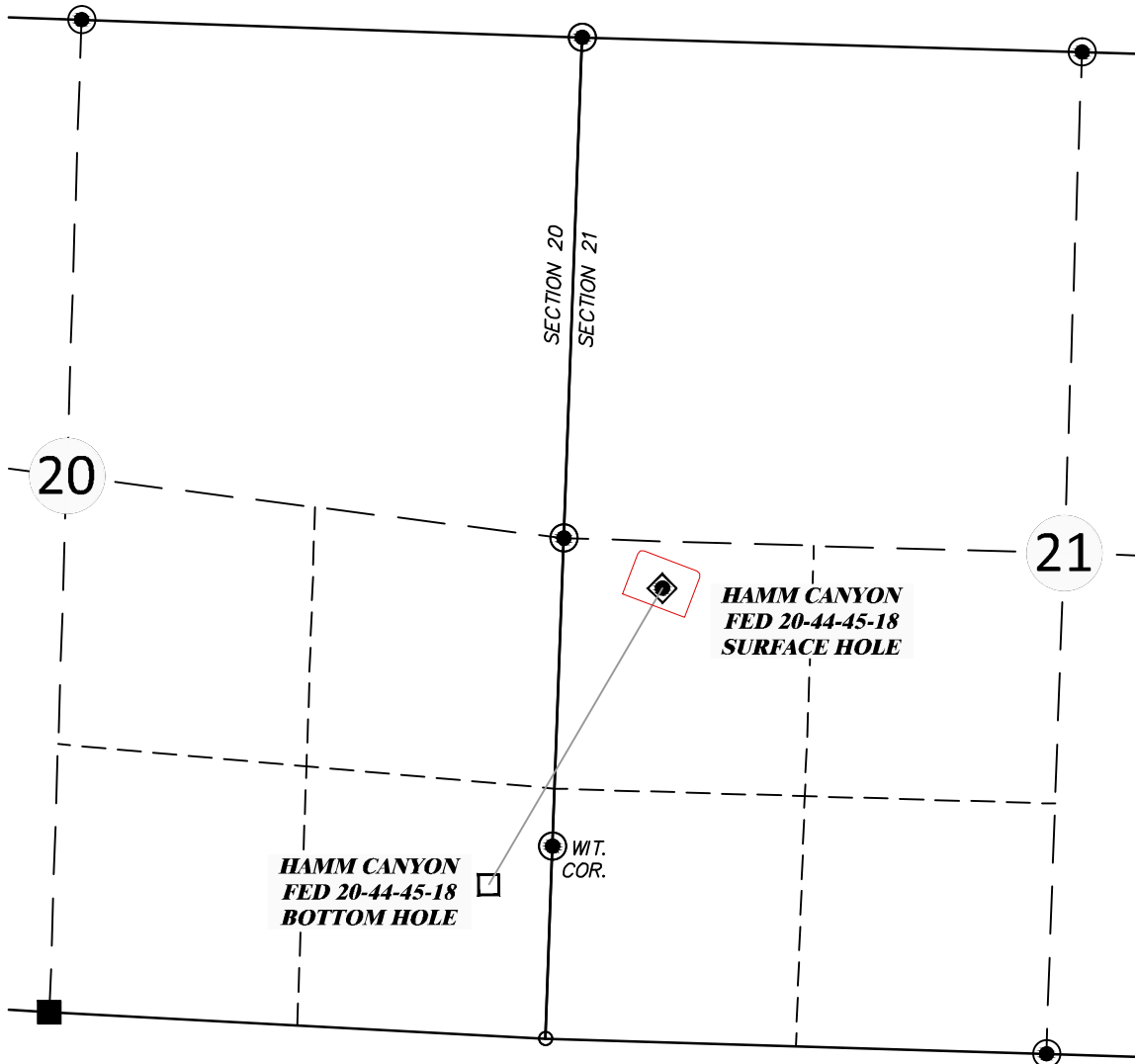


R. 18 W.



SCALE: 1"=1000'
0' 250' 500' 1000'

T. 45 N.



LEGEND

- ◆ SURFACE HOLE LOCATION
- BOTTOM HOLE LOCATION
- CALCULATED CORNER
- FOUND 2-1/2" Al. Cap on no. 6 rebar, "PLS 37065 - 2011"

Notice: In accordance with Colorado State Law, any legal action based upon any defect in this survey plat must commence within three (3) years after first discovery of such defect. In no event may any action based upon any defect in this survey plat be commenced more than ten (10) years from the date of certification shown hereon.

**HAMM CANYON FED
20-44-45-18 PAD**



WILLIAM H. SMITH & ASSOCIATES P.C.
SURVEYING CONSULTANTS
550 EAST SECOND NORTH PHONE: 307-875-3638
GREEN RIVER, WY 307-875-3639
www.whsmithhpc.com

JOB NO: 2011900.014

DATE DRAWN - BY: 10/24/12 - rcr

REVISIONS:

SCALE: 1" = 1000'

EXHIBIT 10

PAGE 1 OF 1

MULTI-WELL PLAN

**PATARA OIL & GAS, LLC
SINGLE WELL**

**NW4SW4, SECTION 21
T. 45 N., R. 18 W., N.M.P.M.
SAN MIGUEL COUNTY, COLORADO**