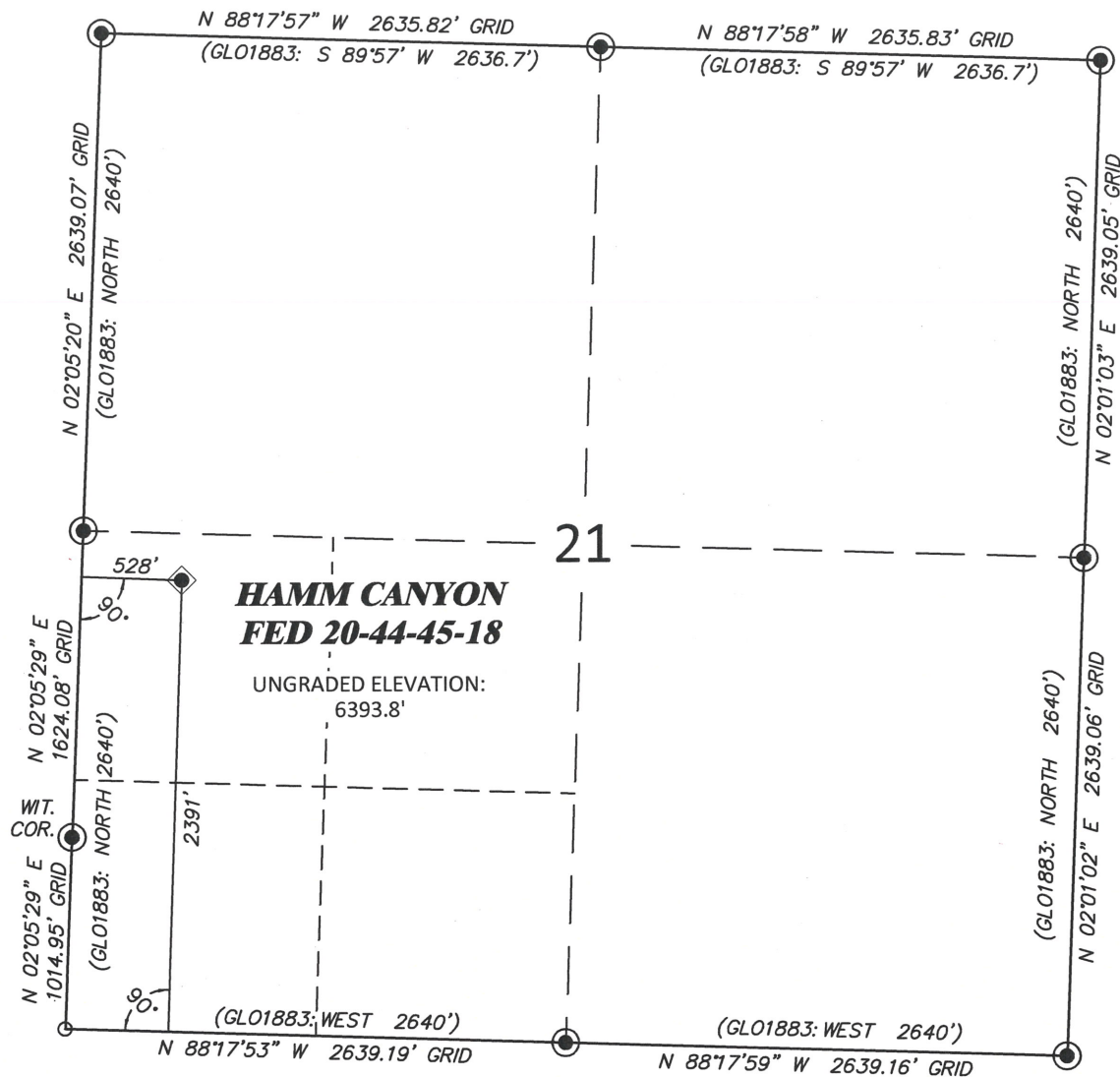


# R. 18 W.



SCALE: 1"=1000'

0' 250' 500' 1000'

## T. 45 N.

### SURFACE HOLE LOCATION

SHL LATITUDE (NAD83)

NORTH 38.138148 DEG.

SHL LONGITUDE (NAD83)

WEST 108.868538 DEG.

SHL COLORADO SOUTH ZONE (NAD83)

NORTHING

1553268.97 FT.

EASTING

2031383.45 FT.

SHL LATITUDE (NAD27)

NORTH 38.138156 DEG.

SHL LONGITUDE (NAD27)

WEST 108.867877 DEG.

SHL COLORADO SOUTH ZONE (NAD27)

NORTHING

553253.26 FT.

EASTING

1031548.64 FT.

### LEGEND

- ◆ SURFACE HOLE LOCATION
- BOTTOM HOLE LOCATION
- CALCULATED CORNER
- FOUND 2-1/2" Al. Cap on no. 6 rebar, "PLS 37065 - 2011"

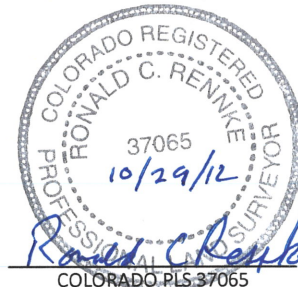
### SURVEYOR'S STATEMENT

I, Ronald C. Rennke, an employee and agent for William H. Smith & Associates P.C., Inc. state the plat hereon is a representation of a field survey made under my authority of the shown HAMM CANYON FED 20-44-45-18 surface hole location, being staked on the ground as shown hereon on October 23, 2012.

### NOTES

- (1.) Basis of Datum is the Colorado State Plane Coordinate System, South Zone, NAD83/CORS96 (horizontal) & NAVD88 (vertical) derived from OPUS solution.
- (2.) The Basis of Bearings for this survey is derived from OPUS solution & referenced to the west line of the shown NW4 of SECTION 21 monumented as shown and bearing N 2°05'20" E.
- (3.) Current land use is native, non-crop & rangeland.
- (4.) Improvements exist within 400' radius, see exhibit 2 for details.
- (5.) All GPS observations for the shown well location are in compliance with COGCC rule no. 215.
- (6.) GPS OPERATOR: RON RENNKE, OBSERVED PDOP OF 2.2

Notice: In accordance with Colorado State Law, any legal action based upon any defect in this survey plat must commence within three (3) years after first discovery of such defect. In no event may any action based upon any defect in this survey plat be commenced more than ten (10) years from the date of certification shown hereon.



**WILLIAM H. SMITH & ASSOCIATES P.C.**  
SURVEYING CONSULTANTS

550 EAST SECOND NORTH PHONE: 307-875-3638  
GREEN RIVER, WY 307-875-3639

www.whsmithpc.com

JOB NO: 2011900.014

REVISIONS:

DATE DRAWN - BY: 10/24/12 - rcr

SCALE: 1" = 1000'

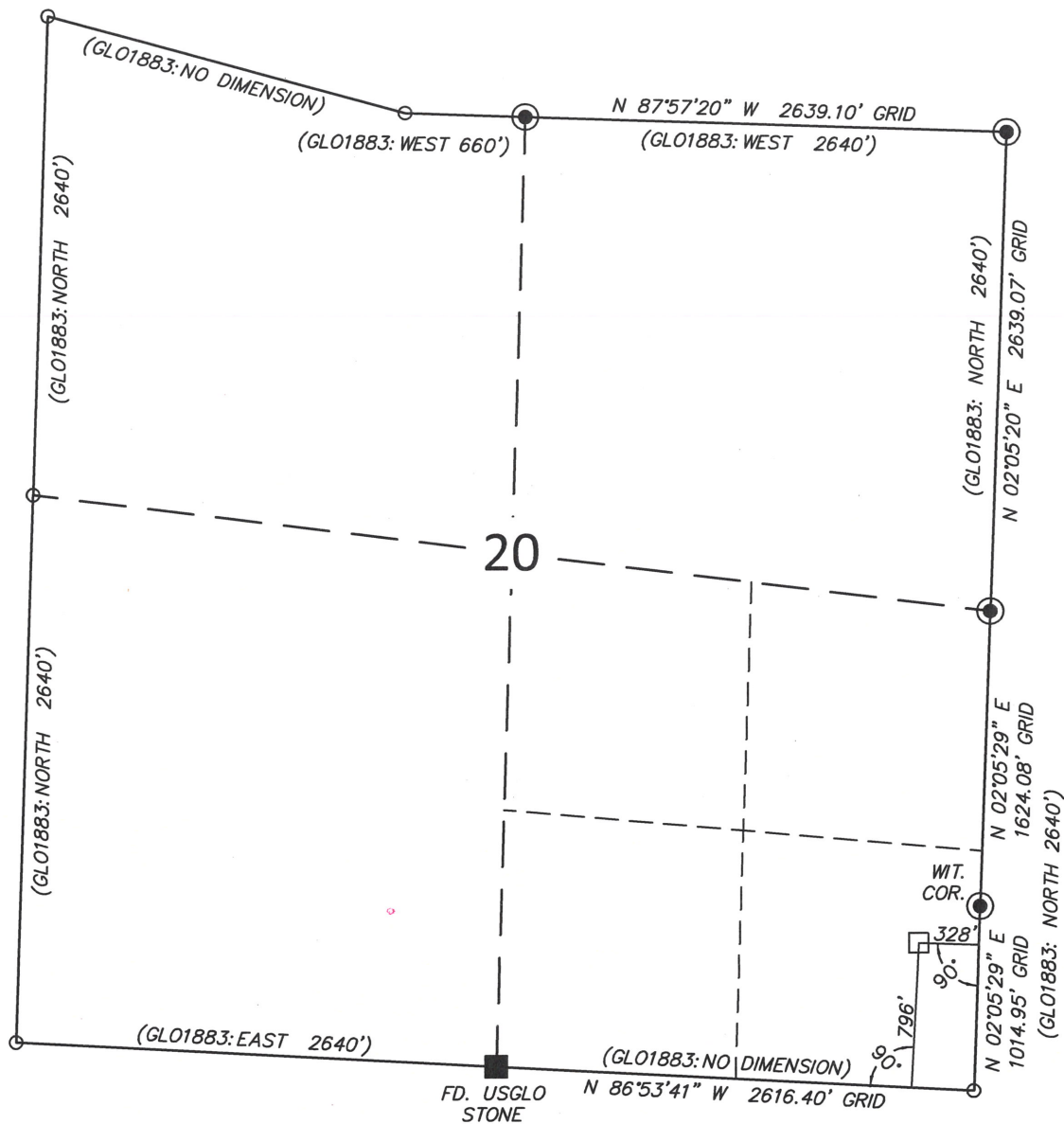
EXHIBIT 1

PAGE 1 OF 2

**PLAT OF DRILLING LOCATION**  
**FOR PATARA OIL & GAS, LLC**  
**HAMM CANYON FED 20-44-45-18 - NW4SW4 SECTION 21**

2391' F/SL & 528' F/WL, SECTION 21  
T. 45 N., R. 18 W., NEW MEXICO P.M.  
SAN MIGUEL COUNTY, COLORADO

R. 18 W.



GRID NORTH

**SCALE:** 1"=1000'

T. 45 N.

BOTTOM HOLE  
LOCATION

BHL LATITUDE  
(NAD83)

NORTH 38.133774 DEG.

BHL LONGITUDE  
(NAD83)

WEST 108.871513 DEG.

BHL COLORADO SOUTH

ZONE (NAD83)

NORTHING

1551708 FT.

EASTING  
3333173.55

BHL LATITUDE (NAD27)  
NORTH 38.133783 DEG.

BHL LONGITUDE (NAD27)

WEST 108.870855 DEG

BHL COLORADO





SOUTH ZONE (NAD27)

NORTHING  
551600 FT

551693 Fl.  
FASTING

EASTING  
103063E FT

## LEGEND

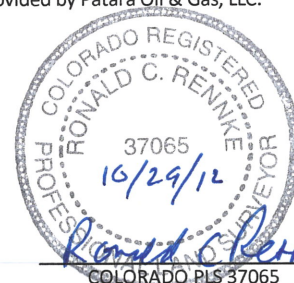
-  SURFACE HOLE LOCATION  
 BOTTOM HOLE LOCATION  
 CALCULATED CORNER  
 FOUND 2-1/2" Al. Cap  
 on no. 6 rebar,  
 "PLS 37065 - 2011"

### SURVEYOR'S STATEMENT

I, Ronald C. Rennke, an employee and agent for William H. Smith & Associates P.C., Inc. state the plat hereon is a representation of a field survey made under my authority on October 23, 2012 of the HAMM CANYON FED 20-44-45-18 approximate bottom hole location as provided by Patara Oil & Gas, LLC.

## NOTES

- (1.) Basis of Datum is the Colorado State Plane Coordinate System, South Zone, NAD83/CORS96 (horizontal) & NAVD88 (vertical) derived from OPUS solution.
- (2.) The Basis of Bearings for this survey is derived from OPUS solution & referenced to the east line of the shown NE4 of SECTION 20 monumented as shown and bearing N 2°05'20" E.
- (3.) Current land use is native, non-crop & rangeland.
- (4.) Improvements exist within 400' radius, see exhibit 2 for details.
- (5.) All GPS observations for the shown well location are in compliance with COGCC rule no. 215.



Notice: In accordance with Colorado State Law, any legal action based upon any defect in this survey plat must commence within three (3) years after first discovery of such defect. In no event may any action based upon any defect in this survey plat be commenced more than ten (10) years from the date of certification shown hereon.



WILLIAM H. SMITH & ASSOCIATES P.C.  
SURVEYING CONSULTANTS

550 EAST SECOND NORTH      PHONE: 307-875-3638  
GREEN RIVER, WY      307-875-3639

[www.whsmithpc.com](http://www.whsmithpc.com)

JOB NO: 2011900.014

DATE DRAWN - BY: 10/24/12 - rcr

REVISIONS:

SCALE: 1" = 1000'

EXHIBIT 1

PAGE 2 OF 2

PLAT OF ABOTTOM HOLE LOCATION  
FOR PATARA OIL & GAS, LLC  
HAMM CANYON FED 20-44-45-18 - SE4E4 SECTION 20

---

796' F/SL & 328' FEL, SECTION 20  
T. 45 N., R. 18 W., NEW MEXICO P.M.  
SAN MIGUEL COUNTY, COLORADO