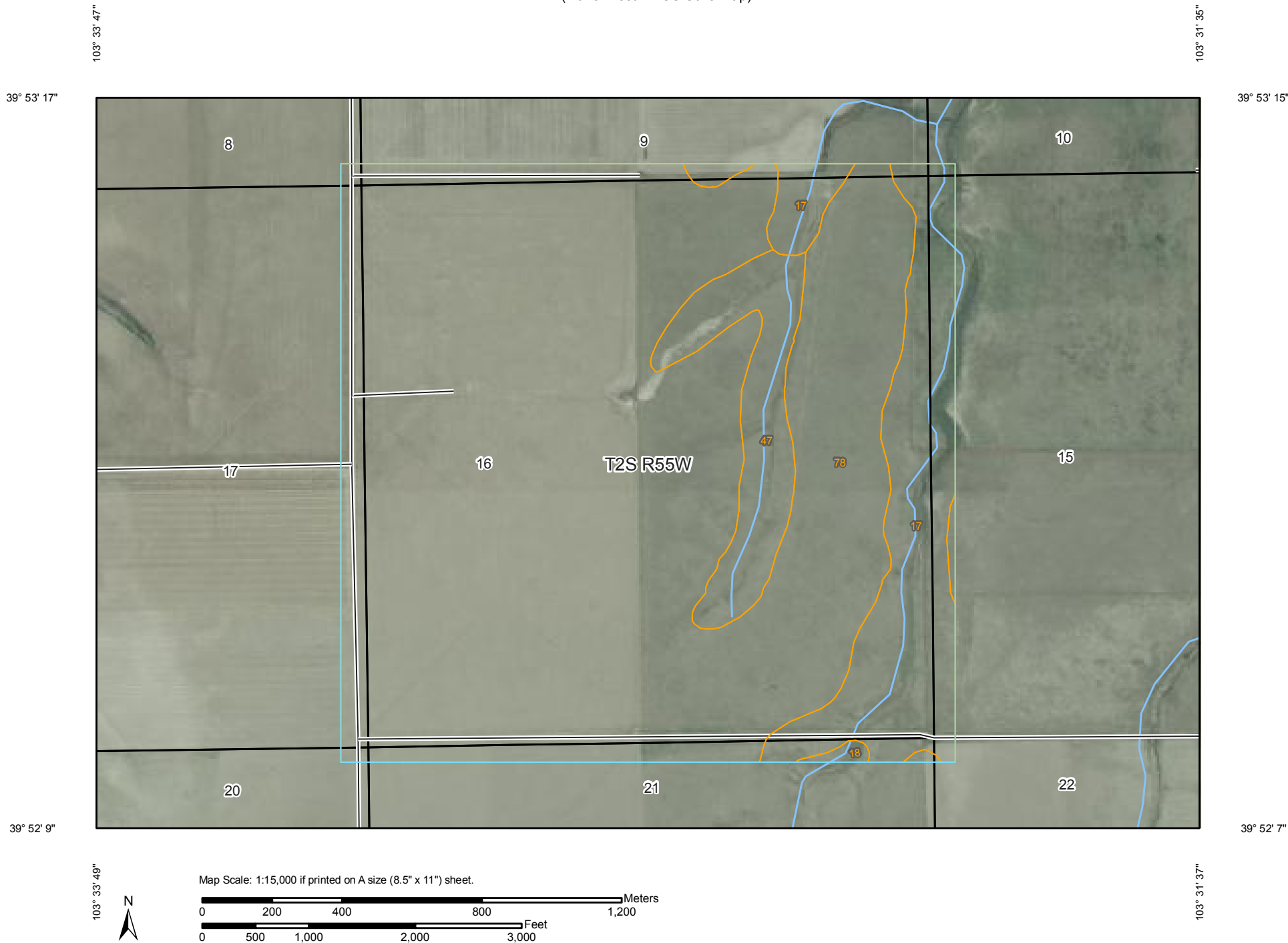


Soil Map—Washington County, Colorado
(Hone West NRCS Soils Map)



Soil Map—Washington County, Colorado
(Hone West NRCS Soils Map)

MAP LEGEND

Area of Interest (AOI)

 Area of Interest (AOI)

Soils

 Soil Map Units

Special Point Features

-  Blowout
-  Borrow Pit
-  Clay Spot
-  Closed Depression
-  Gravel Pit
-  Gravelly Spot
-  Landfill
-  Lava Flow
-  Marsh or swamp
-  Mine or Quarry
-  Miscellaneous Water
-  Perennial Water
-  Rock Outcrop
-  Saline Spot
-  Sandy Spot
-  Severely Eroded Spot
-  Sinkhole
-  Slide or Slip
-  Sodic Spot
-  Spoil Area
-  Stony Spot



Very Stony Spot



Wet Spot



Other

Special Line Features



Gully



Short Steep Slope



Other

Political Features



Cities



PLSS Township and Range



PLSS Section

Water Features



Streams and Canals

Transportation



Rails



Interstate Highways



US Routes



Major Roads



Local Roads

MAP INFORMATION

Map Scale: 1:15,000 if printed on A size (8.5" × 11") sheet.

The soil surveys that comprise your AOI were mapped at 1:24,000.

Please rely on the bar scale on each map sheet for accurate map measurements.

Source of Map: Natural Resources Conservation Service

Web Soil Survey URL: <http://websoilsurvey.nrcs.usda.gov>

Coordinate System: UTM Zone 13N NAD83

This product is generated from the USDA-NRCS certified data as of the version date(s) listed below.

Soil Survey Area: Washington County, Colorado

Survey Area Data: Version 13, Feb 23, 2010

Date(s) aerial images were photographed: 7/6/2005; 7/7/2005

The orthophoto or other base map on which the soil lines were compiled and digitized probably differs from the background imagery displayed on these maps. As a result, some minor shifting of map unit boundaries may be evident.



Map Unit Legend

Washington County, Colorado (CO121)			
Map Unit Symbol	Map Unit Name	Acres in AOI	Percent of AOI
17	Colby-Norka loams, 5 to 9 percent slopes	103.2	13.9%
18	Colby-Ustic Torriorthents complex, 9 to 30 percent slopes	1.8	0.2%
47	Norka-Colby loams, 3 to 5 percent slopes	47.1	6.3%
78	Weld silt loam	592.6	79.6%
Totals for Area of Interest		744.6	100.0%