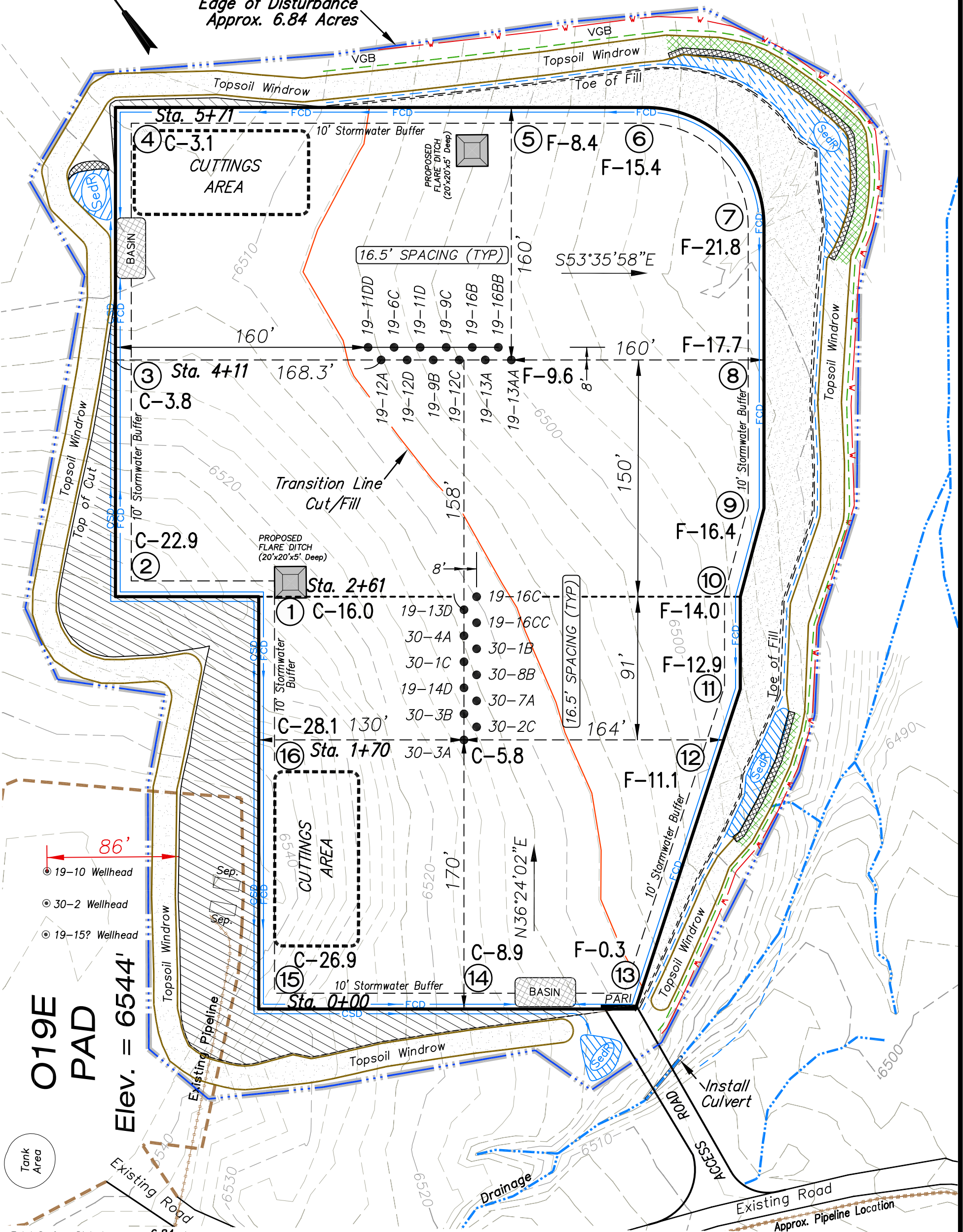


Encana Oil & Gas (USA) Inc.
O19EB Well Pad

SW1/4 SE1/4, SECTION 19, T7S, R92W, 6th P.M.
WELL PAD LAYOUT

Edge of Disturbance
Approx. 6.84 Acres

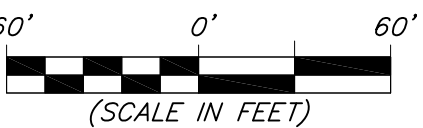


Total Surface Disturbance = 6.84 Acres
(See Sheet 4 for Details)

- NOTES:
- (1) Slope Track and/or Terrace all Slopes and Piles
 - (2) Erosion Control & Seed Topsoil
 - (3) Erosion Control & Seed Outside
 - (4) Slope away from Substructure Areas 1% to 3% to Flow Control

- ST = SEDIMENT TRAP
- SedR = SEDIMENT RESERVOIR
- R.O.D. = RUN-ON DIVERSION
- W- = PERIMETER CONTROL (WATTLES)
- CSD = CUT SLOPE DIVERSION (BERM TOE OF CUT SLOPE)
- D = FILL DIVERSION TO SEDIMENT TRAP
- VGB = VEGETATION BUFFER (UNDISTURBED LAND INSIDE PC)
- FCD = FLOW CONTROL DITCH
- PARI = PAD/ACCESS ROAD INTERFACE
- = LEVEL SPREADER
- = TOE BERM (PLACED AT TOE OF ALL FILL SLOPES/STOCKPILES)
- = TOPSOIL BERM
- = SEED, ECB & FLEX

Elev. Ungraded Ground At 30-3A Well Loc. Stake = 6515.1'
FINISHED GRADE ELEV. AT 30-3A WELL LOC. STAKE = 6509.3'



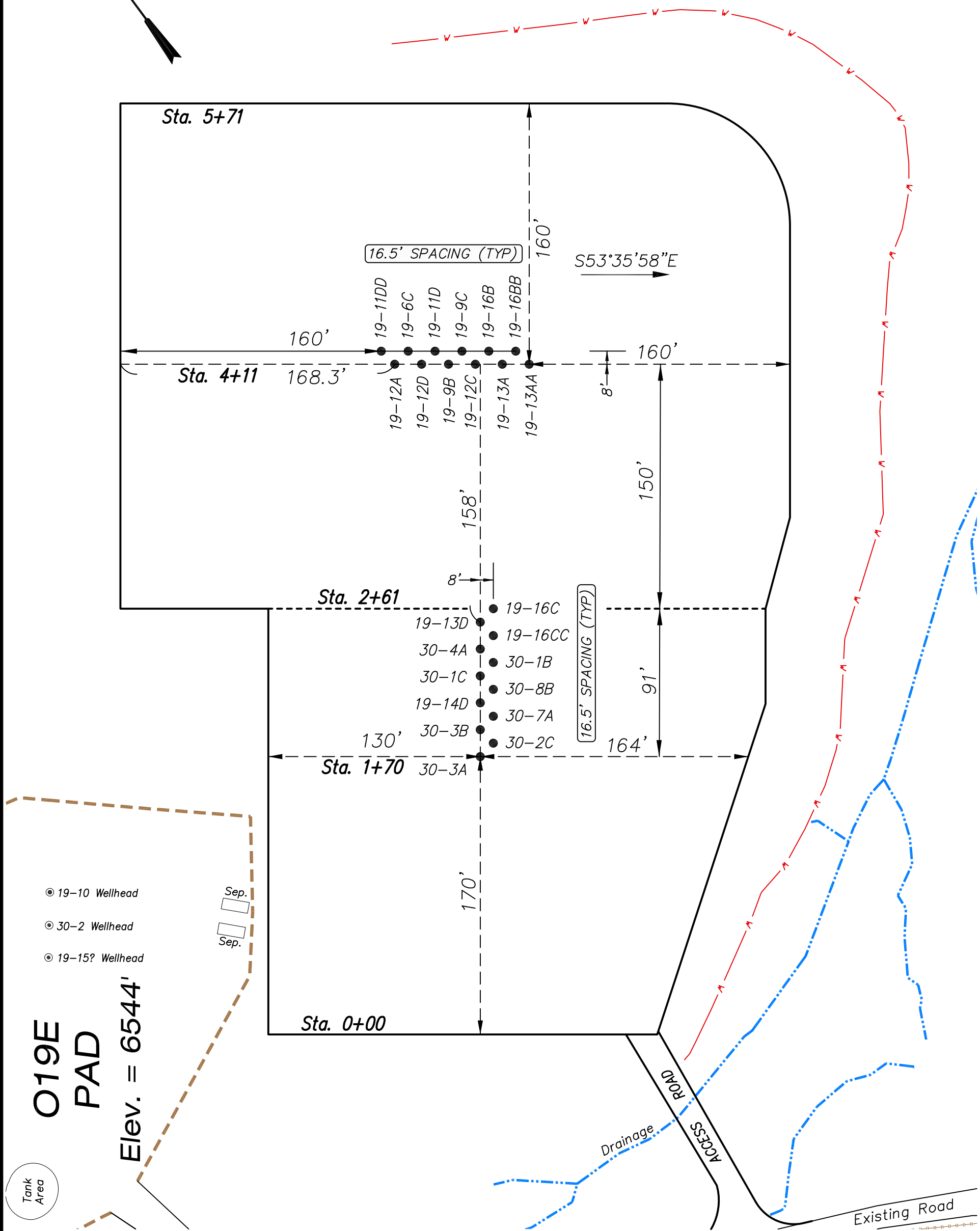
Well Pad Layout		Scale: 1" = 60'	SHEET 3 OF 10
Project No.	10-04-49	Date Surveyed: 6/08/10	
Date Drawn:	6/09/10	Latest Revision Date: 11/09/12	



906 Main Street
Evanston, Wyoming 82930
Phone No. (307) 789-4545

Encana Oil & Gas (USA) Inc.
O19EB Well Pad

SW1/4 SE1/4, SECTION 19, T7S, R92W, 6th P.M.
PRE-CONSTRUCTION PLAT



- 19-10 Wellhead
- 30-2 Wellhead
- 19-15? Wellhead

Elev. = 6544'

Total Surface Disturbance = 6.84 Acres
(See Sheet 4 for Details)

- NOTES:
- (1) Slope Track and/or Terrace all Slopes and Piles
 - (2) Erosion Control & Seed Topsoil
 - (3) Erosion Control & Seed Outside
 - (4) Slope away from Substructure Areas 1% to 3% to Flow Control

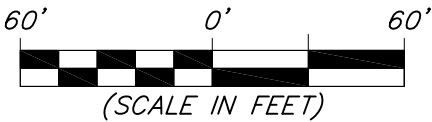
- LEGEND
- S — SLASH
 - ST — SEDIMENT TRAP
 - SedR = SEDIMENT RESERVOIR
 - R.O.D. = RUN-ON DIVERSION
 - W — PERIMETER CONTROL (WATTLES)
 - CSD = CUT SLOPE DIVERSION (BERM TOE OF CUT SLOPE)
 - D = FILL DIVERSION TO SEDIMENT TRAP
 - VCB = VEGETATION BUFFER (UNDISTURBED LAND INSIDE PC)
 - FCD = FLOW CONTROL DITCH
 - PARI = PAD/ACCESS ROAD INTERFACE
 - ▨ = LEVEL SPREADER
 - — — TOE BERM (PLACED AT TOE OF ALL FILL SLOPES/STOCKPILES)
 - — — TOPSOIL BERM
 - ▨ = SEED, ECB & FLEX
 - ▨ = SEED

PRE-CONSTRUCTION PHASE COMPLETE,
AUTHORIZATION TO CONTINUE
CONSTRUCTION.

SIGNATURE: _____



906 Main Street
Evanston, Wyoming 82930
Phone No. (307) 789-4545

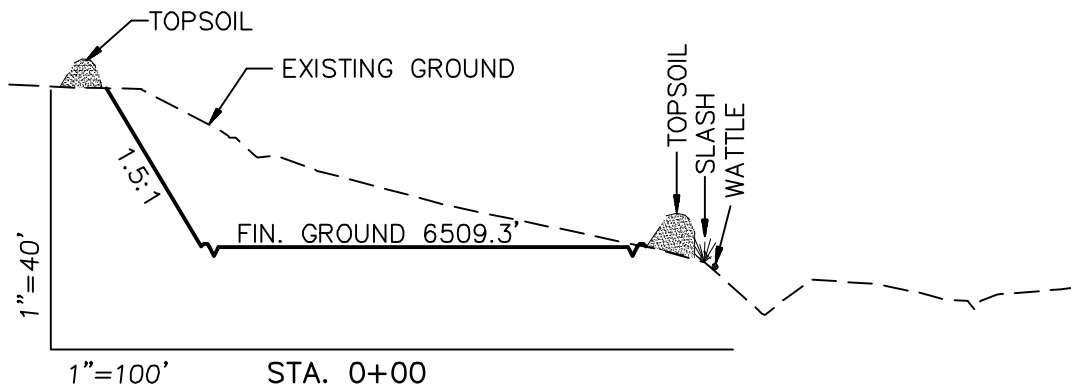
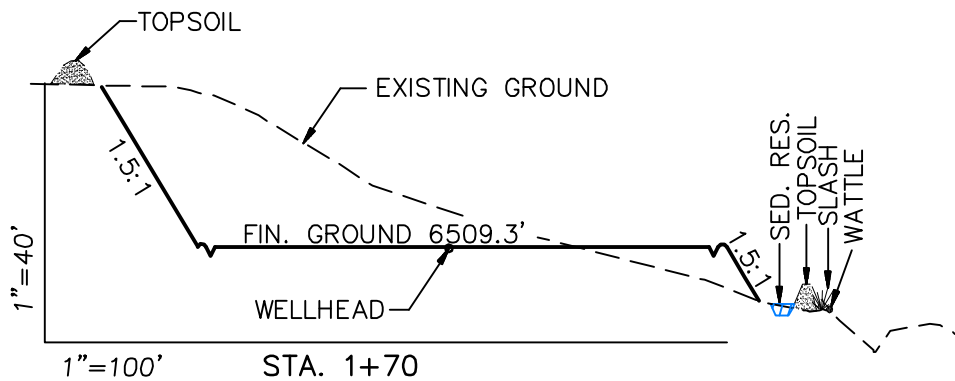
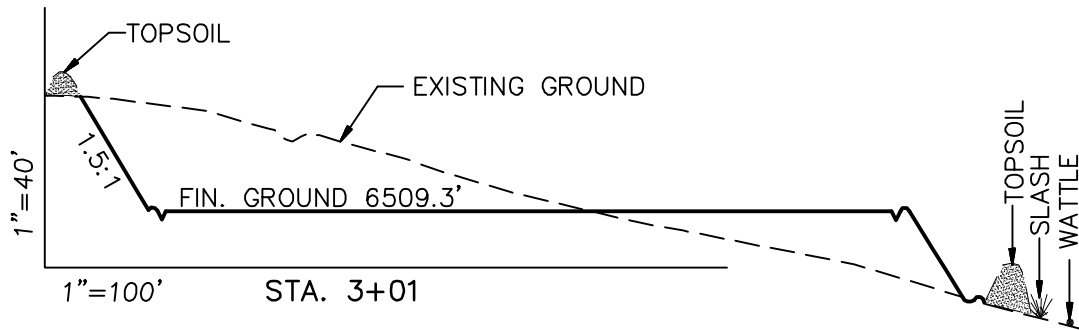


Pre-Construction		Scale: 1" = 60'	SHEET 3a OF 10
Project No.	10-04-49	Date Surveyed: 6/08/10	
Date Drawn: 6/09/10		Latest Revision 11/09/12	

Encana Oil & Gas (USA) Inc.

O19EB Well Pad

CROSS SECTIONS



SURFACE DISTURBANCE (IN ACRES)

Well Pad	4.60
Side Slopes	1.00
Topsoil & Waste Material	1.24
TOTAL	6.84

NOTE:
ALL CUT AND FILL
SLOPES ARE AT 1.5:1
UNLESS OTHERWISE
NOTED.

EARTHWORK QUANTITIES

(in Cubic Yards w/ 0% shrink/swell)

ITEM	CUT	FILL	6" TOPSOIL	EXCESS
PAD	41175	39670	Topsoil not included in Excavation	1504
PIT	0	0		0
TOTALS	41175	39670	4540	1504

Cross Sections

Project No. 10-04-49
Date Drawn: 6/09/10

Scale: As Shown

Date Surveyed: 6/08/10
Latest Revision Date: 11/09/12

SHEET

4

OF 10

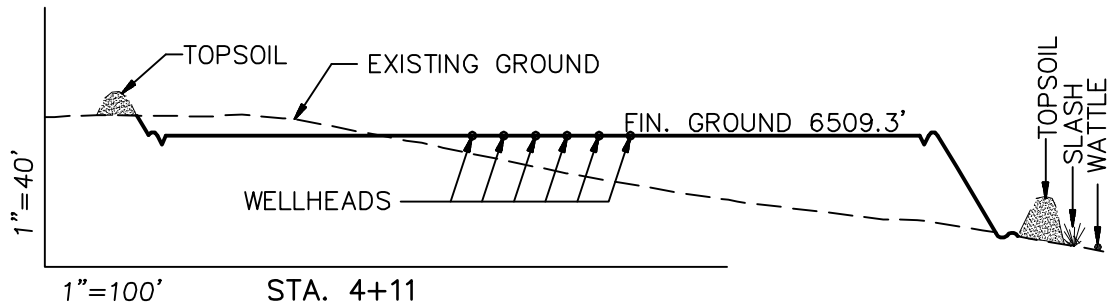
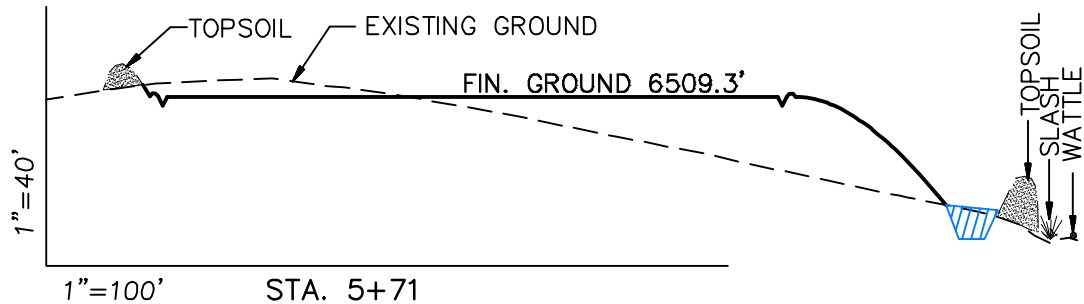


906 Main Street
Evanston, Wyoming 82930
Phone No. (307) 789-4545

Encana Oil & Gas (USA) Inc.

O19EB Well Pad

CROSS SECTIONS



SURFACE DISTURBANCE (IN ACRES)

Well Pad	4.60
Side Slopes	1.00
Topsoil & Waste Material	1.24
TOTAL	6.84

NOTE:
ALL CUT AND FILL
SLOPES ARE AT 1.5:1
UNLESS OTHERWISE
NOTED.

EARTHWORK QUANTITIES

(in Cubic Yards w/ 0% shrink/swell)

ITEM	CUT	FILL	6" TOPSOIL	EXCESS
PAD	41175	39670	Topsoil not included in Excavation	1504
PIT	0	0		0
TOTALS	41175	39670	4540	1504

Cross Sections

Project No. 10-04-49
Date Drawn: 6/09/10

Scale: As Shown

Date Surveyed: 6/08/10
Latest Revision Date: 11/09/12

SHEET

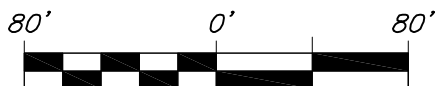
4a

OF 10



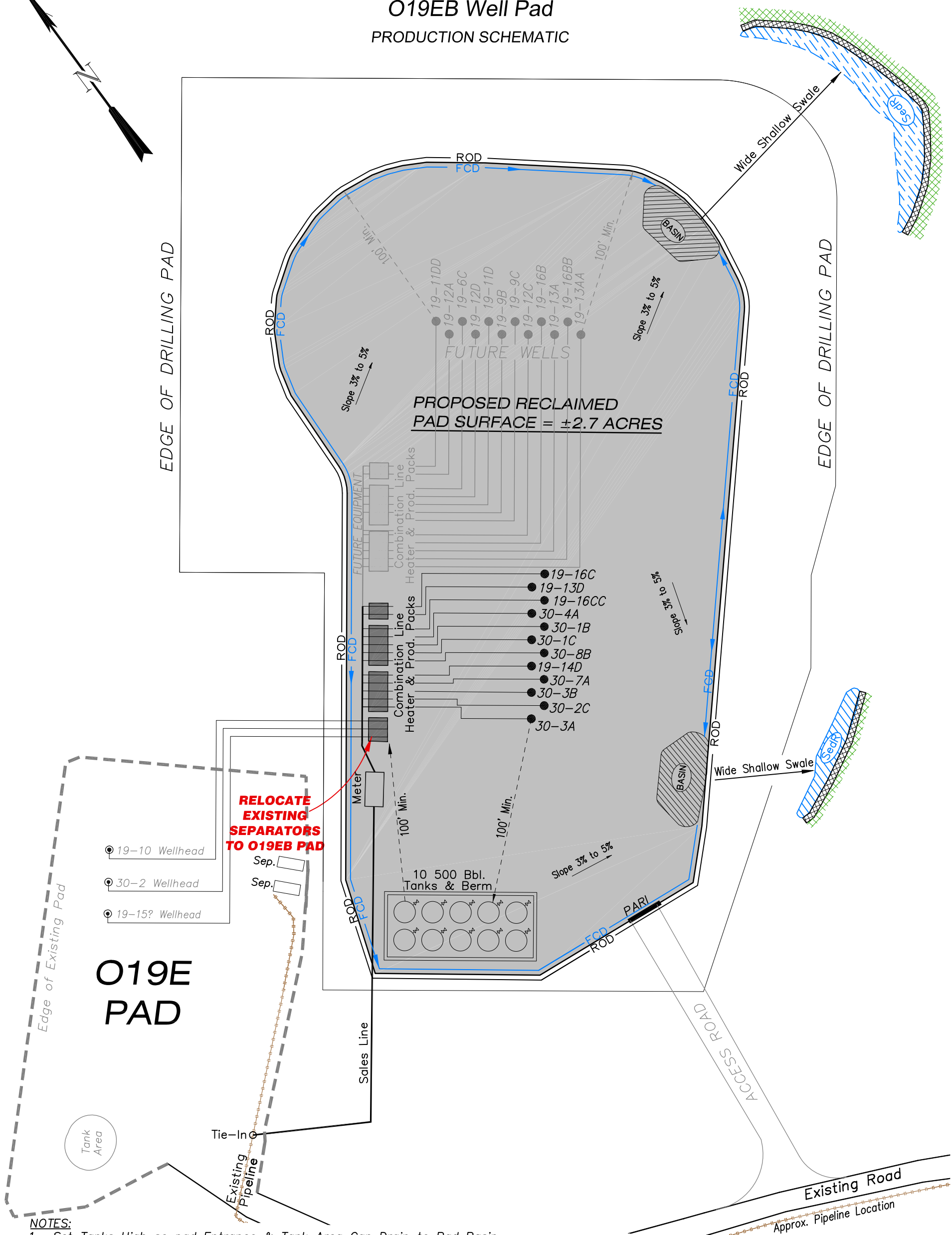
906 Main Street
Evanston, Wyoming 82930
Phone No. (307) 789-4545

TYPICAL RIG LAYOUT



<i>Rig Layout</i>		Scale: 1" = 80'	SHEET 5 OF 10
Project No.	10-04-49	Date Surveyed: 6/08/10	
Date Drawn:	6/09/10	Latest Revision Date: 11/09/12	

Encana Oil & Gas (USA) Inc.
O19EB Well Pad
PRODUCTION SCHEMATIC



- NOTES:**
1. Set Tanks High so pad Entrance & Tank Area Can Drain to Pad Basin
 2. Gravel Pad 75' from Wells & Around Tanks and Separators
 3. Pad Drains to Pad Basin at a 3% to 5% slope
 4. BMP Selection and Position may change Depending on Actual Conditions Encountered During the Construction Process

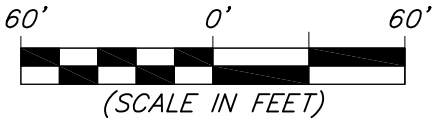
NOTE:
Actual Equipment Layout and Reclaimed Pad Surface Area May Change due to Production Requirements or Site Conditions.

ESTIMATED AREAS
RECLAIMED AREA: 4.2 ACRES
UNRECLAIMED AREA: 2.7 ACRES
(PRODUCTION PAD)

- LEGEND**
- SLASH
 - ST = SEDIMENT TRAP
 - SedR = SEDIMENT RESERVOIR
 - R.O.D. = RUN-ON DIVERSION
 - W = PERIMETER CONTROL (WATTLES)
 - CSD = CUT SLOPE DIVERSION (BERM TOE OF CUT SLOPE)
 - D = FILL DIVERSION TO SEDIMENT TRAP
 - VGB = VEGETATION BUFFER (UNDISTURBED LAND INSIDE PC)
 - FCD = FLOW CONTROL DITCH
 - PARI = PAD/ACCESS ROAD INTERFACE
 - LEVEL SPREADER
 - TOE BERM (PLACED AT TOE OF ALL FILL SLOPES/STOCKPILES)
 - TOPSOIL BERM
 - SEED, ECB & FLEX
 - SEED



906 Main Street
Evanston, Wyoming 82930
Phone No. (307) 789-4545



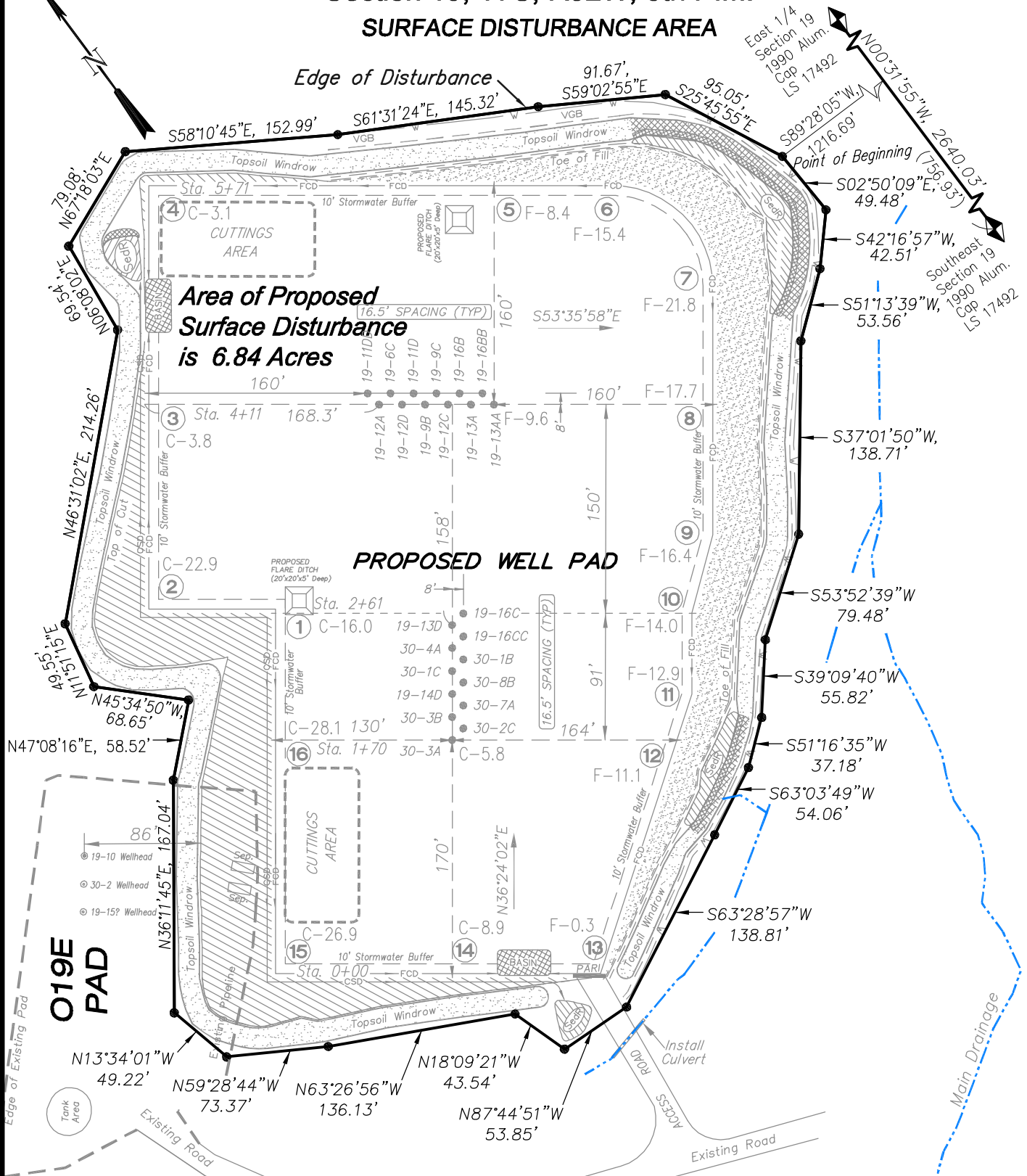
Production Schematic		Scale: 1" = 60'	SHEET
Project No.	10-04-49	Date Surveyed: 6/08/10	6 OF 10
Date Drawn: 6/09/10		Latest Revision Date: 11/09/12	

Encana Oil & Gas (USA) Inc.

O19EB Well Pad

Section 19, T7S, R92W, 6th P.M.

SURFACE DISTURBANCE AREA



(SCALE IN FEET)

906 Main Street
Evanston, Wyoming 82930
Phone No. (307) 789-4545

Surface Disturbance		Scale: 1" = 100'	SHEET 7 OF 10
Project No.	10-04-49	Date Surveyed: 6/08/10	
Date Drawn:	6/09/10	Latest Revision Date: 11/09/12	