



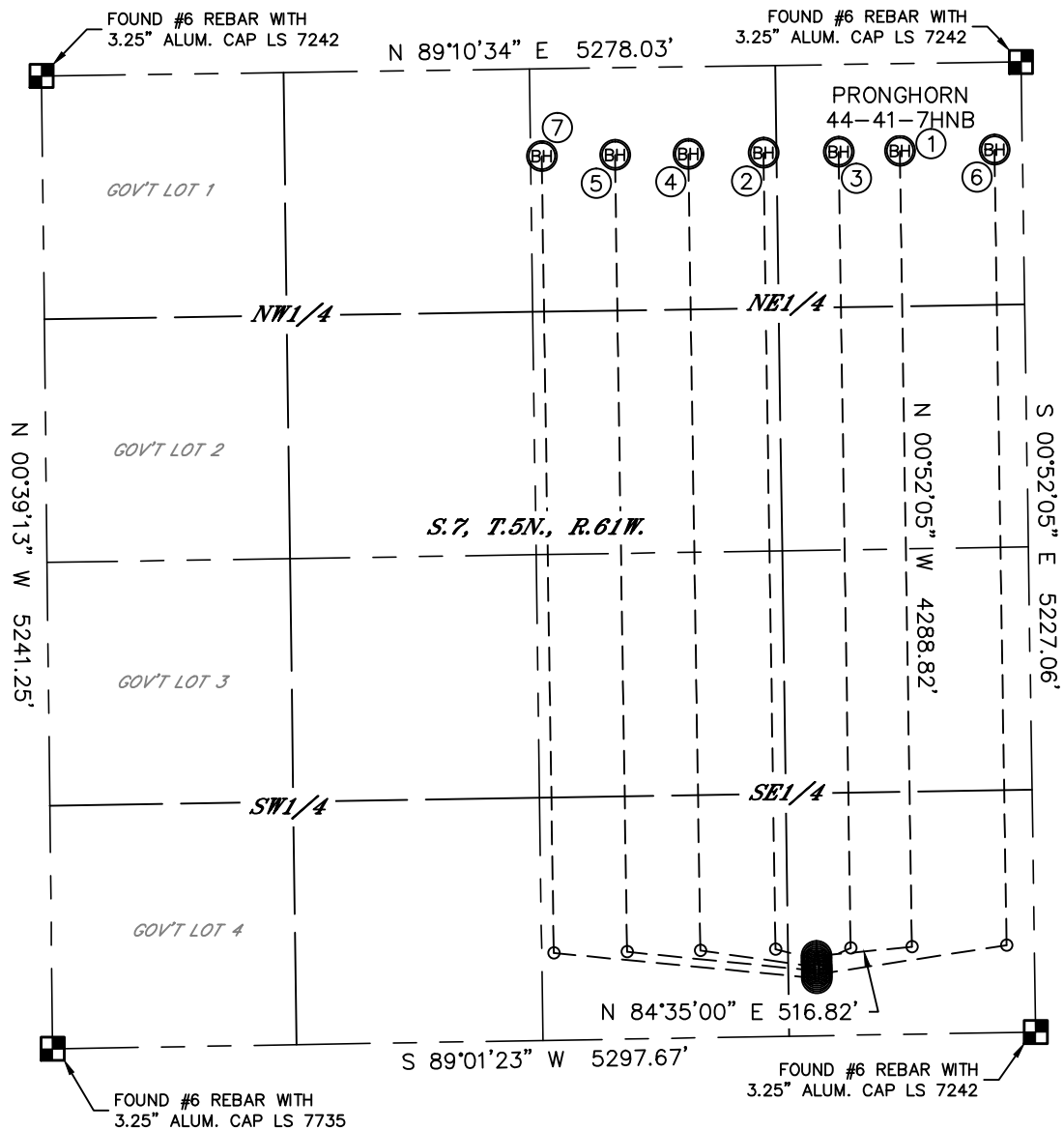
Lat40°, Inc. 1635 Foxtrail Drive, Suite 325 Loveland, CO 970-776-3321

MULTI-WELL PLAN

PRONGHORN T-7 PAD

THIS MAP DOES NOT REPRESENT A BOUNDARY SURVEY

SECTION: 7
TOWNSHIP: 5N
RANGE: 61W



①

SURFACE LOCATION
PRONGHORN 44-41-7HNB
430' FSL
1175' FEL
LAT: 40.40971°N
LONG: 104.24710°W

②

SURFACE LOCATION
PRONGHORN A2
410' FSL
1175' FEL
LAT: 40.40965°N
LONG: 104.24710°W

③

SURFACE LOCATION
PRONGHORN A3
390' FSL
1175' FEL
LAT: 40.40960°N
LONG: 104.24710°W

④

SURFACE LOCATION
PRONGHORN A4
370' FSL
1175' FEL
LAT: 40.40954°N
LONG: 104.24710°W

⑤

SURFACE LOCATION
PRONGHORN A5
350' FSL
1175' FEL
LAT: 40.40949°N
LONG: 104.24710°W

⑥

SURFACE LOCATION
PRONGHORN A6
330' FSL
1175' FEL
LAT: 40.40943°N
LONG: 104.24710°W

⑦

SURFACE LOCATION
PRONGHORN A7
310' FSL
1175' FEL
LAT: 40.40938°N
LONG: 104.24710°W

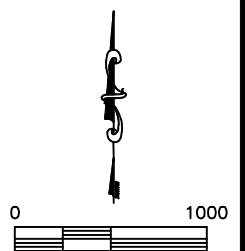
LEGEND



= ALIQUOT MONUMENT AS DESCRIBED



= CALCULATED POSITION



DATE: 11/7/2012
PROJECT#: 2012073



MULTI-WELL PLAN
PRONGHORN T-7 PAD

SECTION: 7
TOWNSHIP: 5N
RANGE: 61W

