

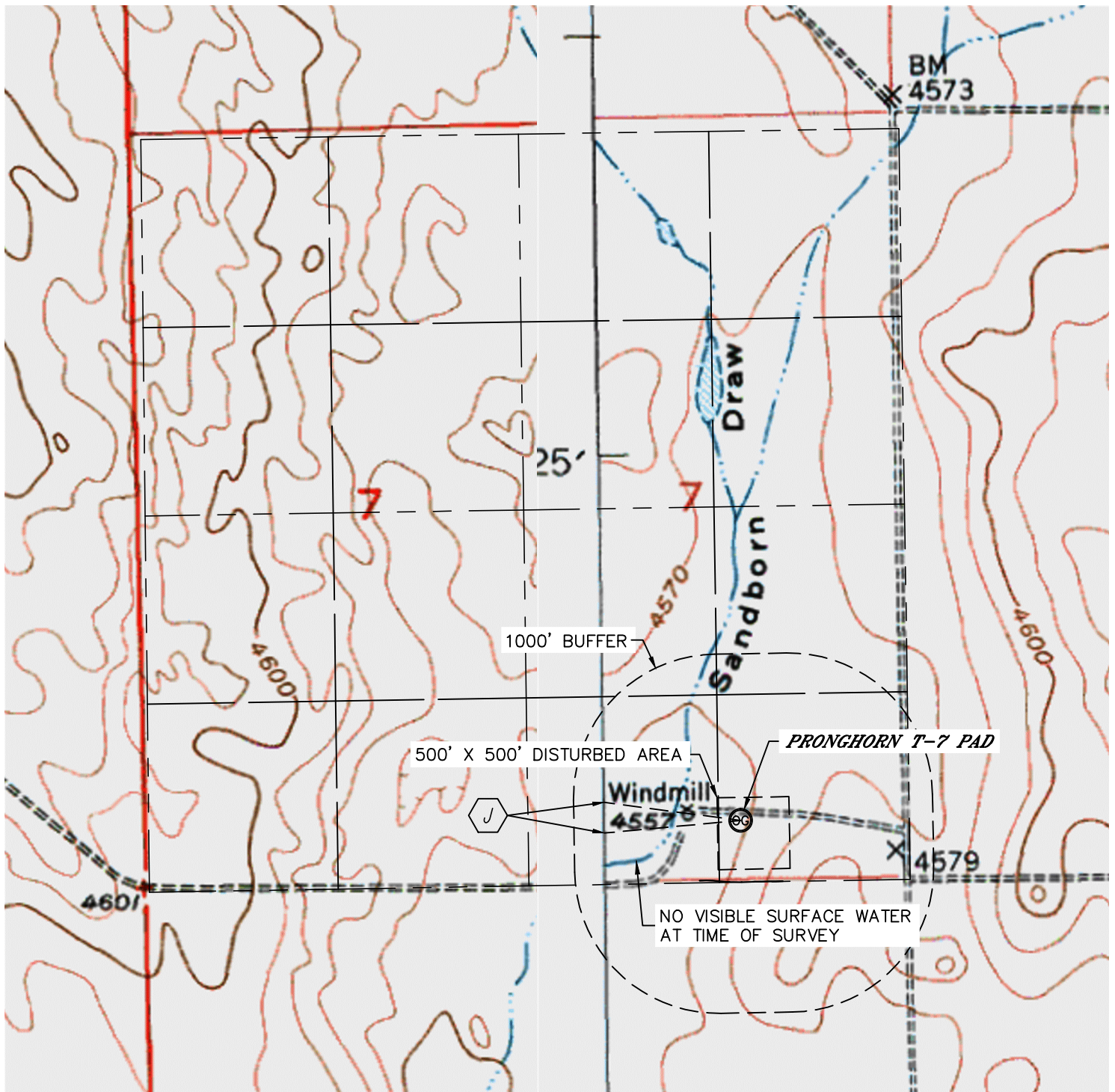


Lat40°, Inc. 1635 Foxtrail Drive, Suite 325 Loveland, CO 970-776-3321

HYDROLOGY MAP

PRONGHORN T-7 PAD

SECTION: 7
TOWNSHIP: 5N
RANGE: 61W



LOW AREA 952' SW, 957' NW



DATE: 11/5/2012
PROJECT#: 2012073