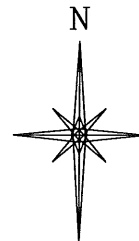


**R. 101 W.**



SCALE' 1" = 1000'  
500' 0 1000'

**T. 8 S.**

**SHL**

**LATITUDE (NAD 83)**  
NORTH 39.344544 DEG.

**LONGITUDE (NAD 83)**  
WEST 108.628177 DEG.

**NORTHING (NAD 27)**  
565602.21

**EASTING (NAD 27)**  
1115663.77

**BASIS OF BEARING/DATUM**

SPCS CO CENTRAL NAD 27  
BASED ON GPS OBSERVATIONS  
AND OPUS SOLUTION ON DRG  
CONTROL POINT "FEES2" HAVING  
A POSITION OF:  
NAD83(CORS96)  
LAT 39° 20' 41.81554" NORTH  
LONG 108° 37' 18.10681" WEST  
NAVD88 ELEVATION: 6414.94

THE EAST LINE OF THE SE¼ OF  
SECTION 23, MONUMENTED BY  
BLM BC'S AND BEARING  
N 02°05'48" E.

**LEGEND**

- ◆ WELL LOCATION
- APPROX. BHL
- L DENOTES 90° TIE
- FOUND MONUMENT
- BLM LEASE LINE

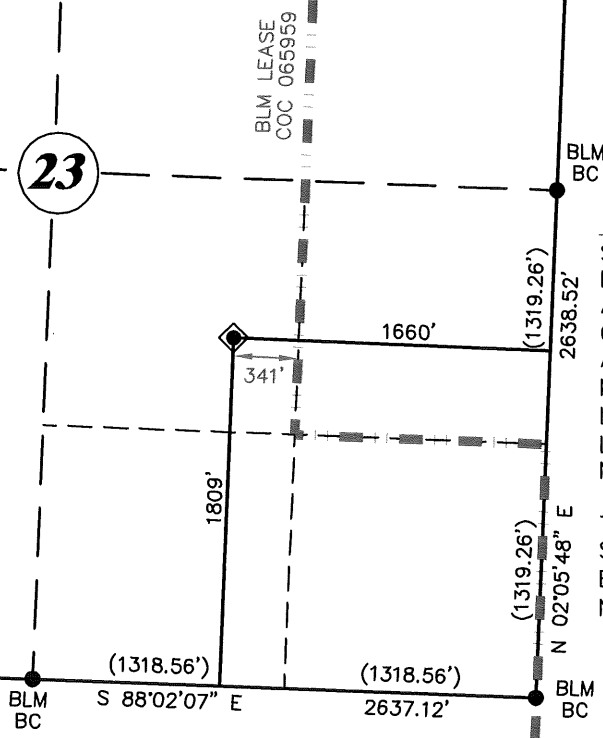
**FED**  
**1-23-8-101 MV**  
**UNGRADED ELEVATION:**  
**6232.6'**

BASIS OF ELEVATION:  
GPS OBSERVATIONS AND OPUS  
SOLUTION ON DRG CONTROL POINT  
"FEES2" HAVING A POSITION OF:  
NAD83(CORS96)  
LAT 39° 20' 41.81554" NORTH  
LONG 108° 37' 18.10681" WEST  
NAVD88 ELEVATION: 6414.94

**23**

**NOTES**

1. GPS OPERATOR SCOTT BONNER  
OBSERVED A PDOP OF 0.7.
2. ALL GPS OBSERVATIONS ARE IN  
COMPLIANCE WITH COGCC RULE  
No.215.
3. EXISTING IMPROVEMENTS WITHIN  
400' OF LOCATION. SEE EXHIBIT 2D.
4. SURROUNDING SURFACE USE IS  
NATIVE BRUSH, GRAZING, & NON  
CROP RANGELAND.

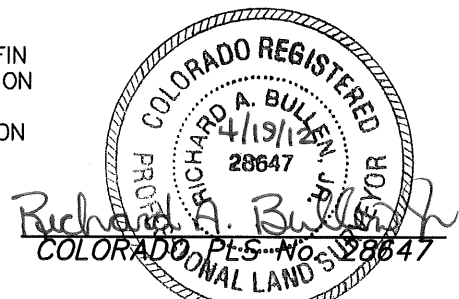


**SURVEYOR'S STATEMENT**

I, RICHARD A. BULLEN, AN EMPLOYEE AND AGENT ON BEHALF OF D.R. GRIFFIN & ASSOCIATES, INC. STATE THE PLAT HEREON IS A CORRECT REPRESENTATION OF A SURVEY MADE UNDER MY SUPERVISION ON APRIL 12, 2012 OF THE SHOWN FED 1-23-8-101 MV AND THAT THE LOCATION HAS BEEN STAKED ON THE GROUND.

Notice: In accordance with Colorado State Law, any legal action based upon any defect in this survey plat must commence within three (3) years after first discovery of such defect. In no event, may any action based upon any defect in this survey plat be commenced more than ten (10) years from the date of certification shown hereon.

FED 1-23-8-101 MV



<b>DRG</b> RIFFIN & ASSOCIATES, INC. (307) 362-5028 1414 ELK ST., ROCK SPRINGS, WY 82901	
DATE: 04/17/12 - DEH	SCALE: 1" = 1000'
REVISED: N/A	DRG JOB No. 19192
EXHIBIT 1	

<b>PLAT OF DRILLING LOCATION IN NWSE, SECTION 23, FOR WALTER S. FEES, JR. &amp; SON O &amp; G, LLC</b>
<b>1809' F/SL &amp; 1660' F/WL, SECTION 23, T. 8 S., R. 101 W., 6th P.M., MESA COUNTY, COLORADO</b>