



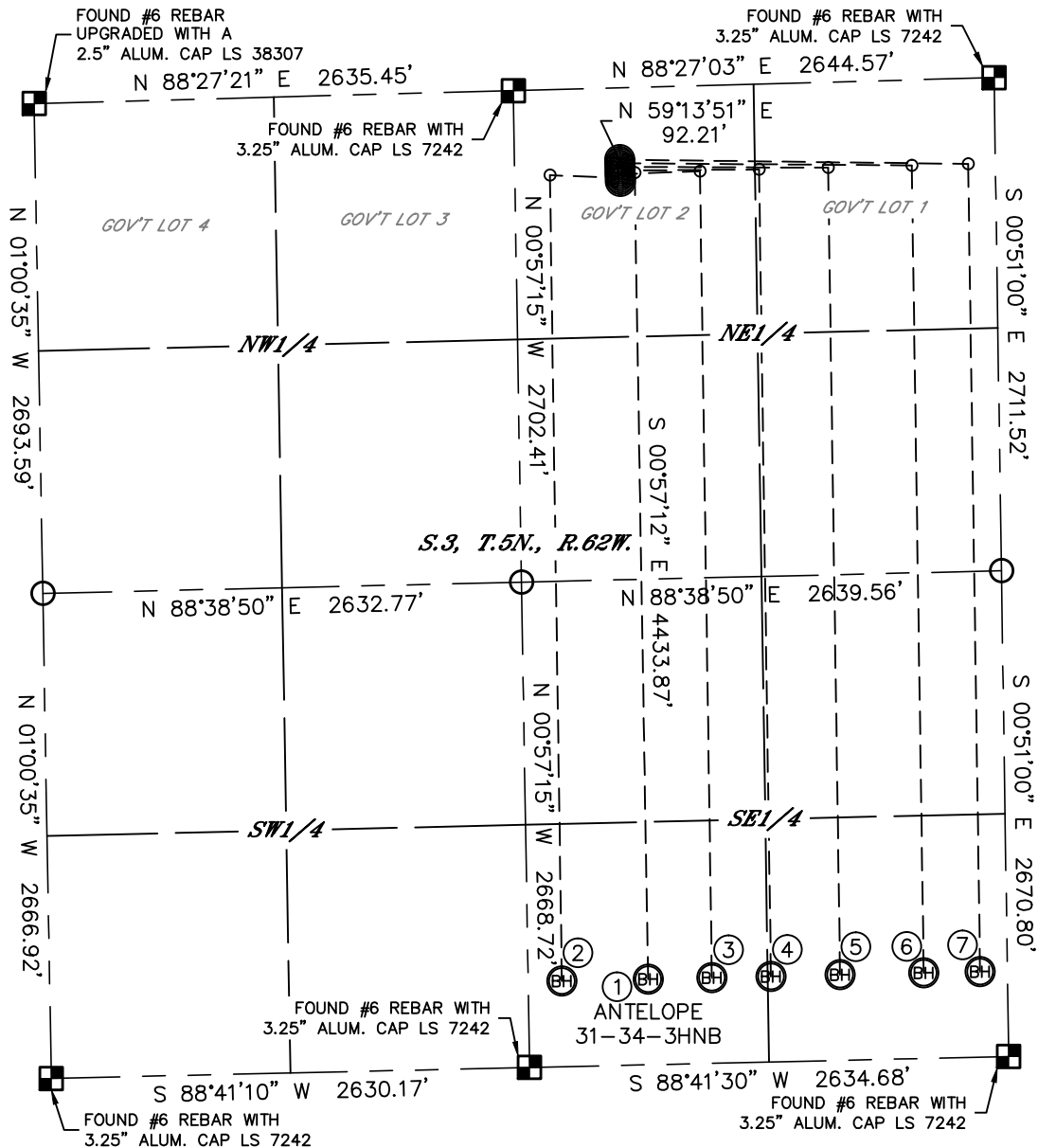
Lat40°, Inc. 1635 Foxtrail Drive, Suite 325 Loveland, CO 970-776-3321

# MULTI-WELL PLAN

## ANTELOPE 31-3 PAD

THIS MAP DOES NOT REPRESENT A BOUNDARY SURVEY

SECTION: 3  
TOWNSHIP: 5N  
RANGE: 62W



①  
SURFACE LOCATION  
ANTELOPE 31-34-3HNB  
515' FNL  
2064' FEL  
LAT: 40.43524°N  
LONG: 104.30745°W

②  
SURFACE LOCATION  
ANTELOPE A2-3HNB  
495' FNL  
2064' FEL  
LAT: 40.43530°N  
LONG: 104.30745°W

③  
SURFACE LOCATION  
ANTELOPE A3-3HNB  
475' FNL  
2064' FEL  
LAT: 40.43535°N  
LONG: 104.30746°W

④  
SURFACE LOCATION  
ANTELOPE A4-3HNB  
455' FNL  
2065' FEL  
LAT: 40.43541°N  
LONG: 104.30746°W

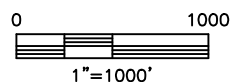
⑤  
SURFACE LOCATION  
ANTELOPE A5-3HNB  
435' FNL  
2065' FEL  
LAT: 40.43546°N  
LONG: 104.30746°W

⑥  
SURFACE LOCATION  
ANTELOPE A6-3HNB  
415' FNL  
2065' FEL  
LAT: 40.43552°N  
LONG: 104.30746°W

⑦  
SURFACE LOCATION  
ANTELOPE A7-3HNB  
395' FNL  
2065' FEL  
LAT: 40.43557°N  
LONG: 104.30746°W

### LEGEND

- = ALIQUOT MONUMENT AS DESCRIBED
- = CALCULATED POSITION



DATE: 11/7/2012  
PROJECT#: 2012144



Lat40°, Inc. 1635 Foxtrail Drive, Suite 325 Loveland, CO 970-776-3321

MULTI-WELL PLAN  
ANTELOPE 31-3 PAD

SECTION: 3  
TOWNSHIP: 5N  
RANGE: 62W

