

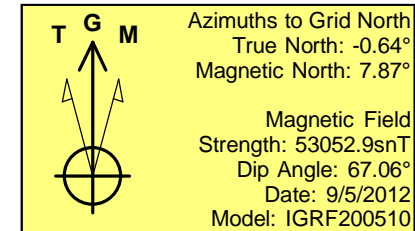
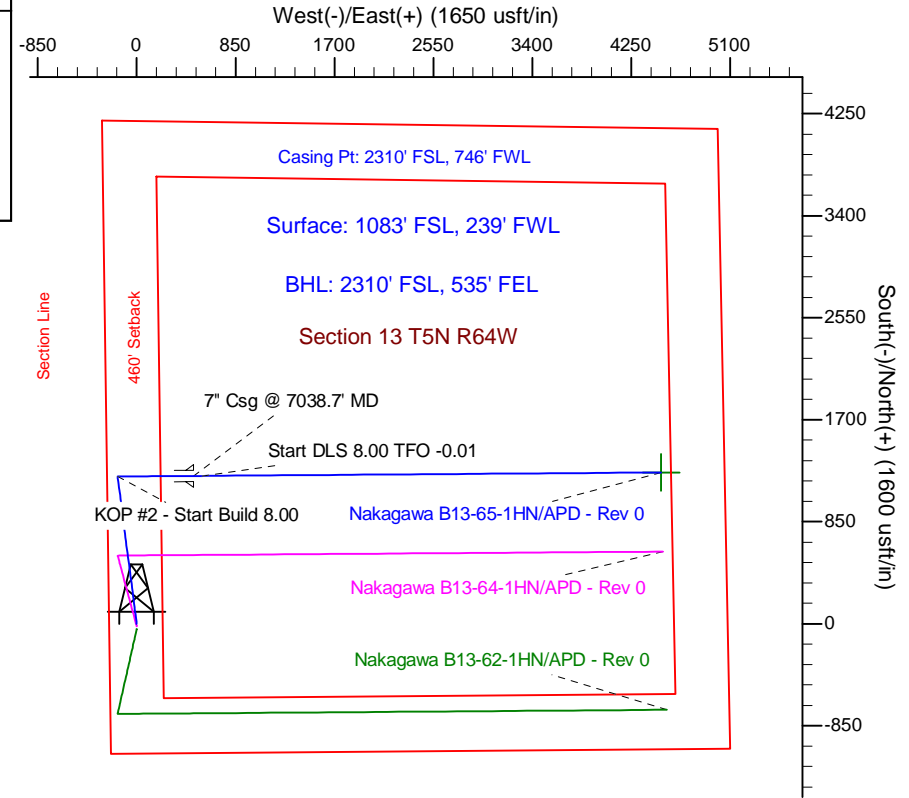
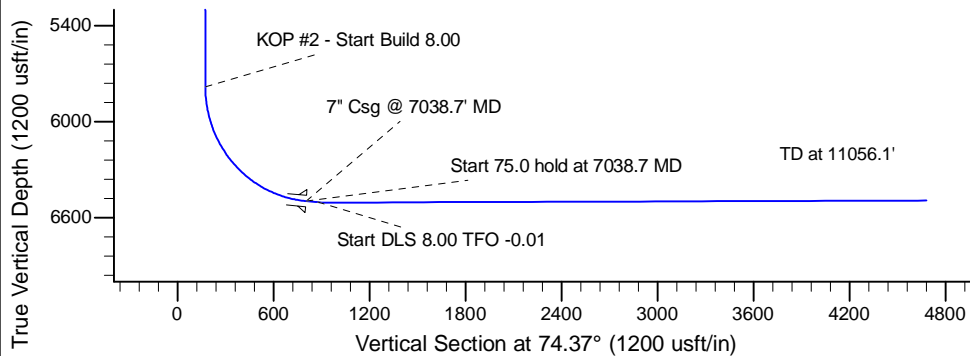
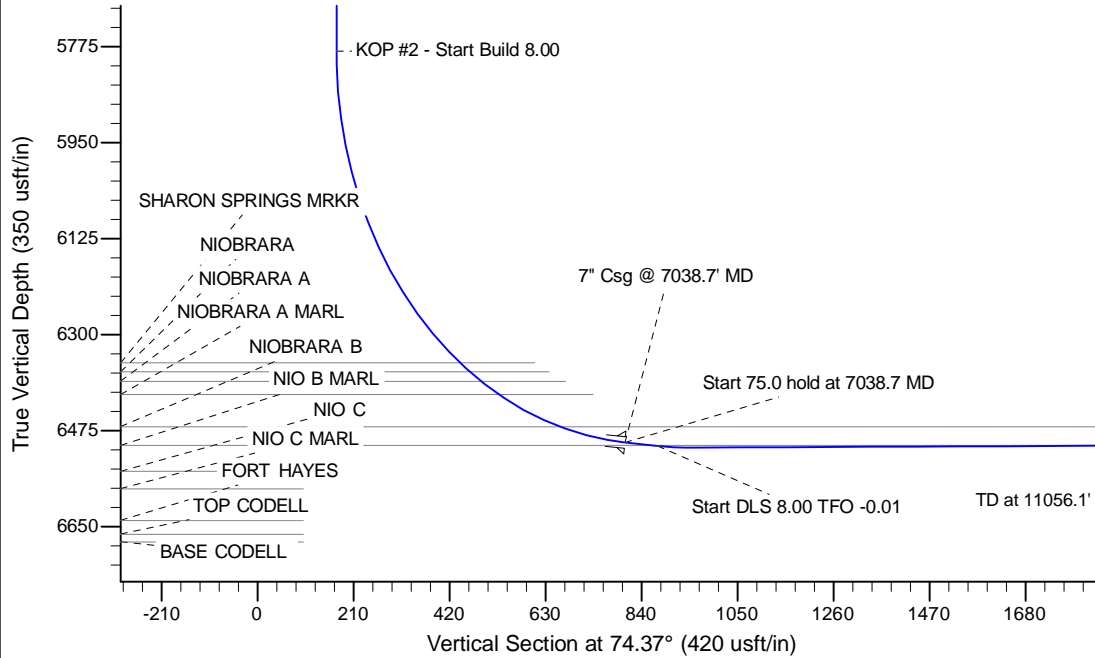
Project: Wattenberg Field
Site: B (Sec.13-T05N-R64W) Weld County, CO
Well: Nakagawa B13-65-1HN
Wellbore: Original Drilling
Design: APD - Rev 0

Northern Region Drilling

Geodetic System: US State Plane 1983
Datum: North American Datum 1983
Ellipsoid: GRS 1980
Zone: Colorado Northern Zone
System Datum: Mean Sea Level

SECTION DETAILS

Sec	MD	Inc	Azi	TVD	+N/-S	+E/-W	Dleg	TFace	VSec	Target
1	0.0	0.00	0.00	0.0	0.0	0.0	0.00	0.00	0.0	
2	1000.0	0.00	0.00	1000.0	0.0	0.0	0.00	0.00	0.0	
3	1759.8	19.00	352.39	1746.0	123.7	-16.5	2.50	352.39	17.4	
4	4796.2	19.00	352.39	4617.0	1103.3	-147.5	0.00	0.00	155.2	
5	5556.0	0.00	0.00	5363.0	1227.0	-164.0	2.50	180.00	172.6	
6	5976.2	0.00	0.00	5783.2	1227.0	-164.0	0.00	0.00	172.6	
7	7038.7	85.00	89.59	6496.6	1231.7	489.8	8.00	89.59	803.4	
8	7113.7	85.00	89.59	6503.2	1232.2	564.5	0.00	0.00	875.5	
9	7178.6	90.20	89.59	6505.9	1232.7	629.3	8.00	-0.01	938.1	
10	11056.1	90.20	89.59	6492.7	1260.5	4506.7	0.00	0.00	4679.6	Nakagawa B13-65-1HN BHL 2310'FSL, 535'FEL



WELL DETAILS: Nakagawa B13-65-1HN			
Ground Level:	4570.0	Latitude	40.394990
Northing	1388283.13	Easting	3276511.38
Longitude	-104.507230		
Plan: APD - Rev 0 (Nakagawa B13-65-1HN/Original Drilling)			
Created By:	Carrie Willers	Date:	18:26, September 05 2012
Checked:		Date:	
Reviewed:		Date:	
Approved:		Date:	