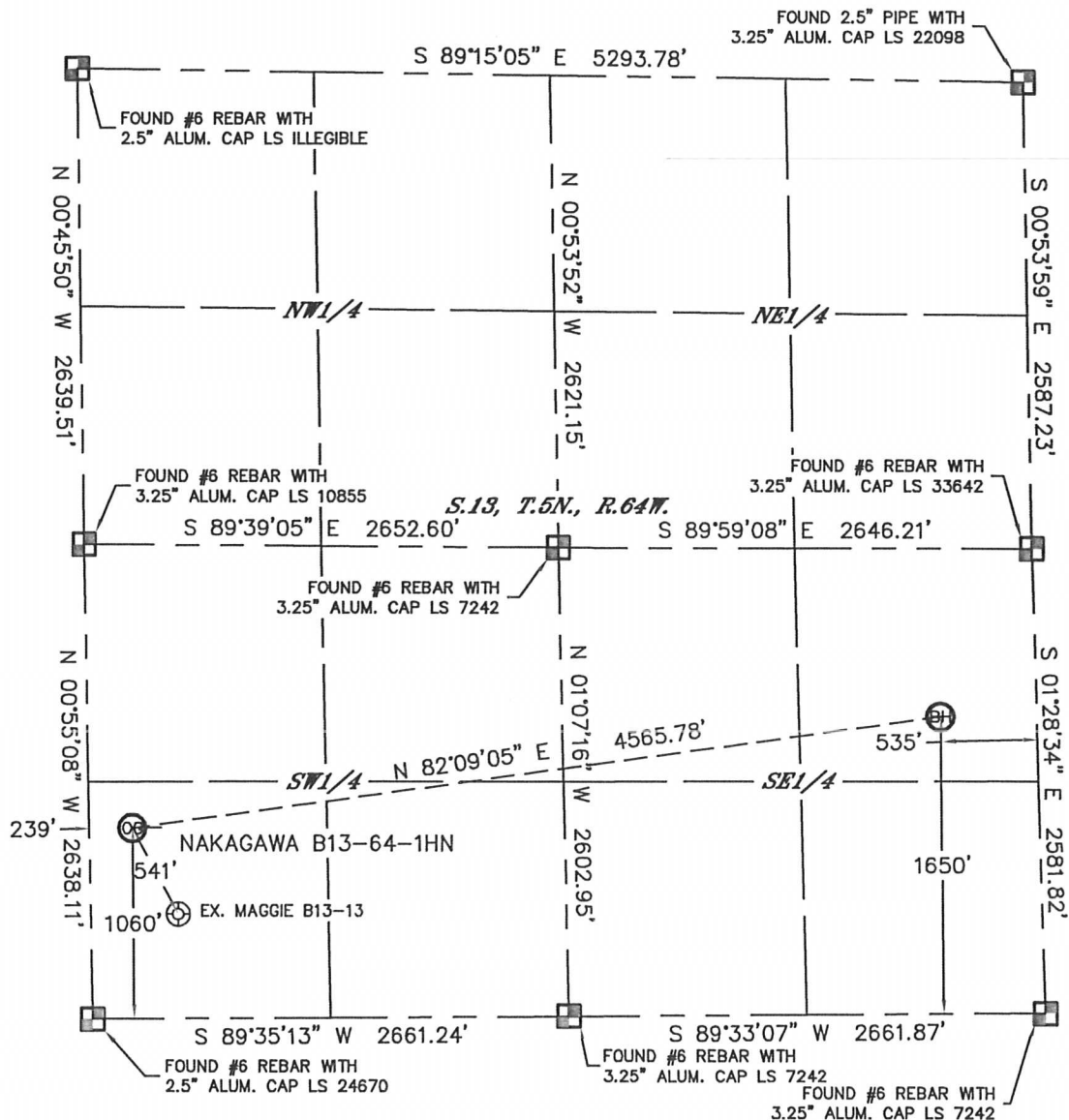


# WELL LOCATION CERTIFICATE

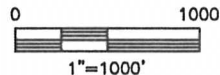
THIS MAP DOES NOT REPRESENT A BOUNDARY SURVEY

SECTION: 13  
TOWNSHIP: 5N  
RANGE: 64W



In accordance with a request from Mike Rodine with Noble Energy Inc., Lat40°, Inc. has determined the surface location of the NAKAGAWA B13-64-1HN to be 1060' from the SOUTH line and 239' from the WEST line and the bottom hole to be 1650' from the SOUTH line and 535' from the EAST line as measured at right angles from the section lines of Section 13, Township 5 North, Range 64 West of the Sixth Principal Meridian, County of Weld, State of Colorado.

I hereby state that this Well Location Certificate was prepared by me, or under my direct supervision, that the fieldwork was completed on 6/28/2012, for and on behalf of Noble Energy Inc.. That this is not a Land Survey Plat or an Improvement Survey Plat, and that it is not to be relied upon for establishment of fence, building, or other future improvement lines.



**NOTE:**

- 1) Bearings shown are Grid Bearings of the Colorado State Plane Coordinate System, North Zone, North American Datum 1983/2007. The lined dimensions as contained herein are based upon the "U.S. Survey Foot."
- 2) Ground elevations are based on an observed GPS elevation (NAVD 1988 DATUM).
- 3) NEAREST EXISTING WELL: MAGGIE B13-13, 541'
- 4) IMPROVEMENTS: See LOCATION DRAWING for all visible improvements within 400' of disturbed area.
- 5) SURFACE USE: CROPLAND
- 6) INSTRUMENT OPERATOR: ADAM KELLY

**NOTE:**

According to Colorado law, you must commence any legal action based upon any defect in this W.L.C. within three years after you discover such defect. In no event, may any action based upon any defect in this survey be commenced more than ten years after the date of the certificate shown hereon. (13-80-105 C.R.S.)

**LEGEND**

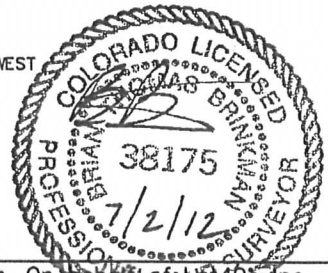
- = ALIQUOT MONUMENT AS DESCRIBED
- = CALCULATED POSITION

**SURFACE LOCATION**

LAT: 40.39493°N  
LONG: 104.50723°W  
PDOP: 2.3  
ELEV: 4570'  
1/4, 1/4: SW1/4SW1/4  
NEAREST PROPERTY LINE: 239' WEST

**BOTTOM HOLE**

LAT: 40.39650°N  
LONG: 104.49097°W

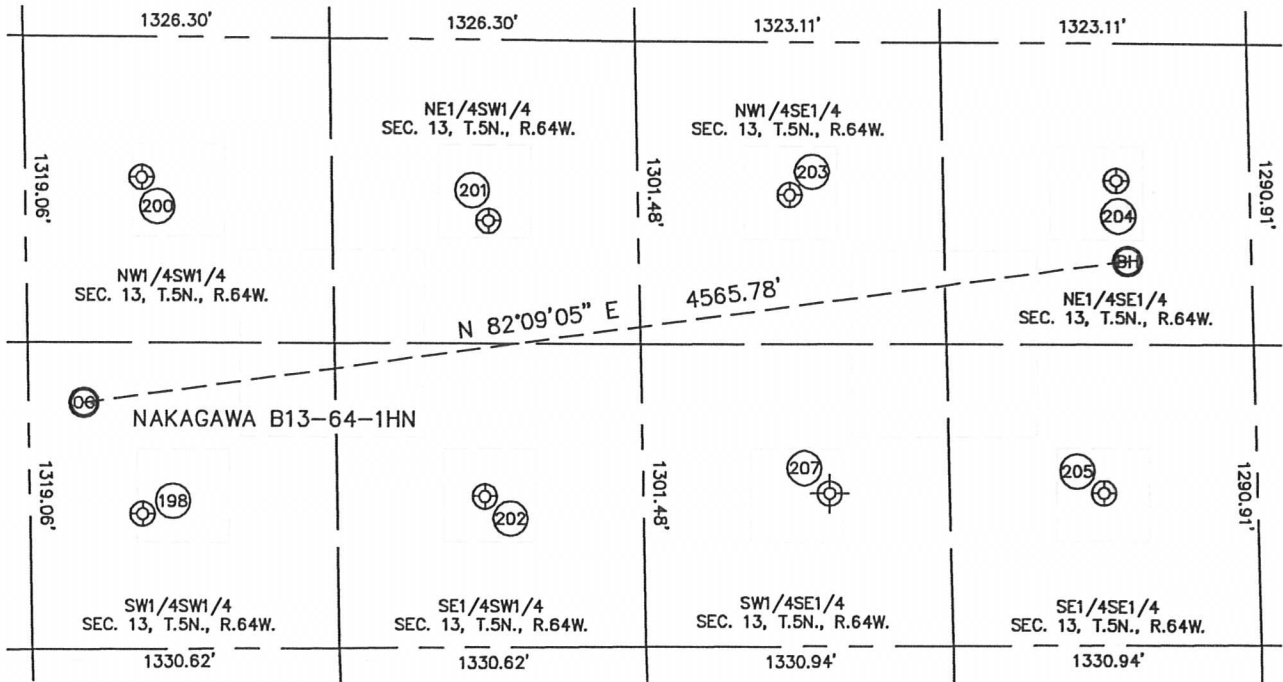


Brian T. Brinkman—On behalf of Lat40°, Inc.  
Colorado Licensed Professional Land Surveyor No. 38175  
DATE: rev 7/2/2012  
PROJECT#: 2012029

# SITE SKETCH

## NAKAGAWA B13-64-1HN

SECTION: 13  
TOWNSHIP: 5N  
RANGE: 64W



198

MAGGIE B13-13  
SW1/4SW1/4  
582' FSL  
486' FWL  
LAT-40.39361°N  
LONG-104.50633°W  
PDOP: 1.2  
ELEV: 4568'

200

MAGGIE B13-12  
NW1/4SW1/4  
2028' FSL  
504' FWL  
LAT-40.39758°N  
LONG-104.50629°W  
PDOP: 3.7  
ELEV: 4582'

201

FORD 23-13  
NE1/4SW1/4  
1836' FSL  
2005' FWL  
LAT-40.39703°N  
LONG-104.50090°W  
PDOP: 3.0  
ELEV: 4584'

202

FORD NO. 13-1  
SE1/4SW1/4  
652' FSL  
1972' FWL  
LAT-40.39378°N  
LONG-104.50100°W  
PDOP: 2.8  
ELEV: 4567'

203

NAKAGAWA PM B13-10  
NW1/4SE1/4  
1943' FSL  
1992' FEL  
LAT-40.39731°N  
LONG-104.49621°W  
PDOP: 4.2  
ELEV: 4572'

204

NAKAGAWA B13-9  
NE1/4SE1/4  
1997' FSL  
576' FEL  
LAT-40.39745°N  
LONG-104.49113°W  
PDOP: 2.2  
ELEV: 4569'

205

NAKAGAWA B13-16  
SE1/4SE1/4  
655' FSL  
662' FEL  
LAT-40.39377°N  
LONG-104.49137°W  
PDOP: 3.2  
ELEV: 4567'

207

NAKAGAWA PMB 13-15  
(Plugged & Abandoned)  
SW1/4SE1/4  
660' FSL (COGCC)  
1850' FEL (COGCC)  
LAT-40.39379°N (COGCC)  
LONG-104.49571°W (COGCC)  
PDOP: N/A  
ELEV: 4563' (COGCC)

