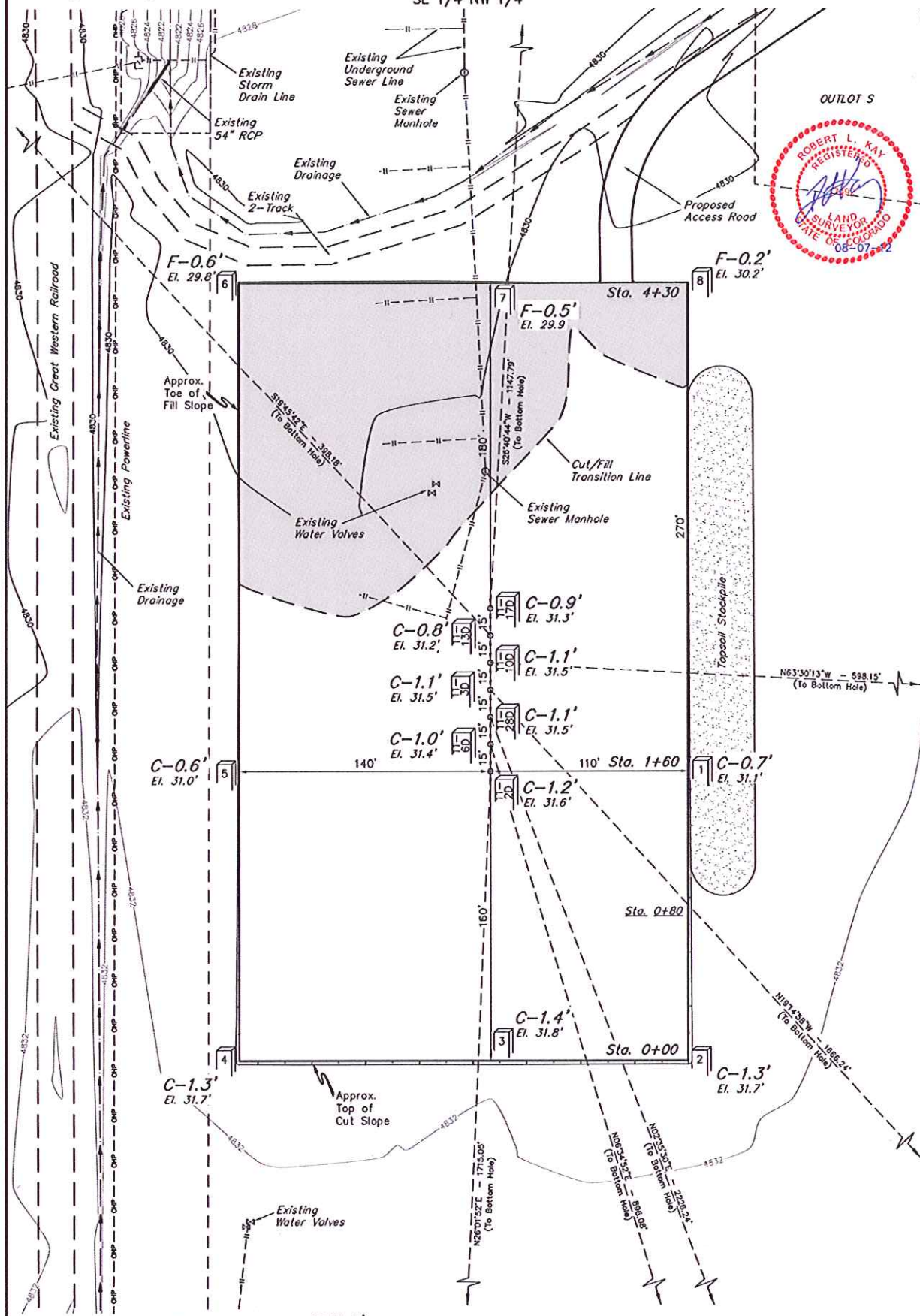


GREAT WESTERN OIL & GAS COMPANY
CONSTRUCTION LAYOUT FOR
 TAILHOLT FD11-2D, FD11-6D, FD11-28D,
 FD11-3D, FD11-10D, FD11-13D & FD11-17D
 SECTION 11, T6N, R67W, 6th P.M.
 SE 1/4 NW 1/4

FIGURE #1

SCALE: 1" = 50'
 DATE: 07-30-12
 DRAWN BY: J.W.



Elev. Ungraded Ground At FD11-2D Loc. Stake = 4831.6'
 FINISHED GRADE ELEV. AT FD11-2D LOC. STAKE = 4830.4'

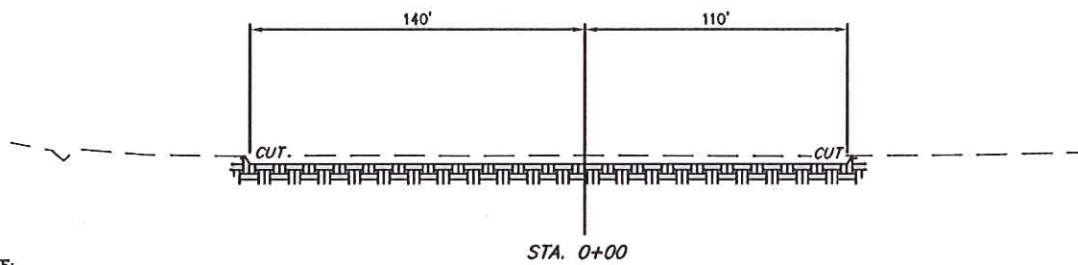
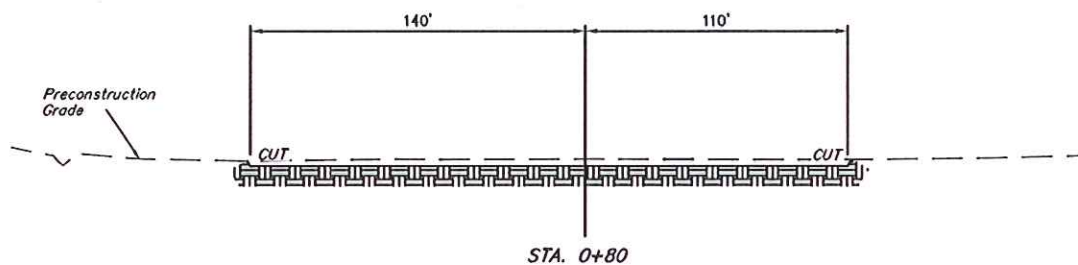
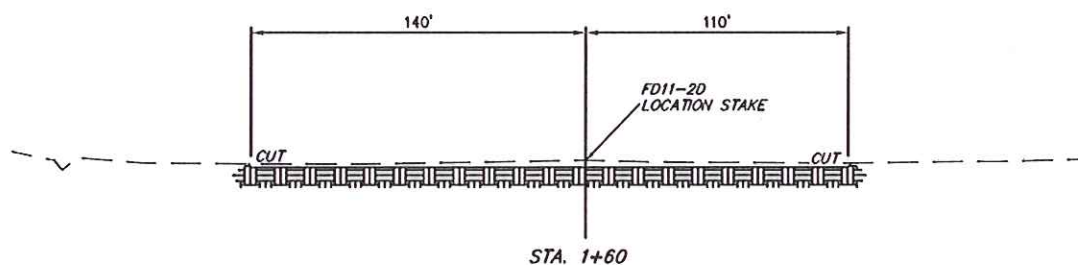
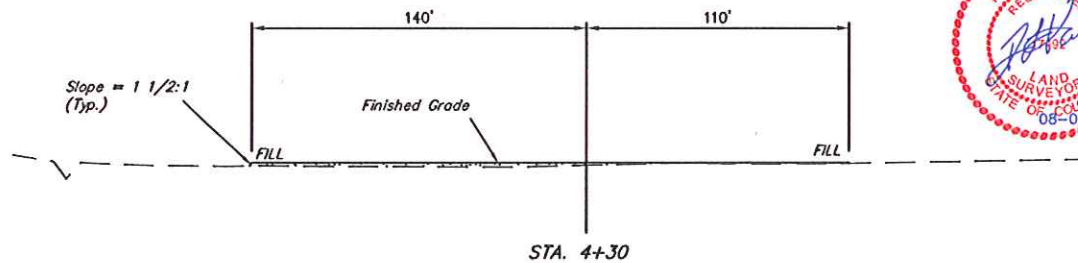
UINTAH ENGINEERING & LAND SURVEYING
 85 So. 200 East • Vernal, Utah 84078 • (435) 789-1017

1" = 20'
X-Section
Scale
1" = 50'

GREAT WESTERN OIL & GAS COMPANY
CONSTRUCTION LAYOUT CROSS SECTIONS FOR
TAILHOLT FD11-2D, FD11-6D, FD11-28D,
FD11-3D, FD11-10D, FD11-13D & FD11-17D
SECTION 11, T6N, R67W, 6th P.M.
SE 1/4 NW 1/4

FIGURE #2

DATE: 07-30-12
DRAWN BY: J.W.



NOTE:
Topsoil should not be
Stripped Below Finished
Grade on Substructure Area.

* NOTE:
FILL QUANTITY INCLUDES
5% FOR COMPACTION

APPROXIMATE YARDAGES

(6") Topsoil Stripping = 2,020 Cu. Yds.
Remaining Location = 1,140 Cu. Yds.
TOTAL CUT = 3,160 CU. YDS.
FILL = 1,140 CU. YDS.

EXCESS MATERIAL = 2,020 Cu. Yds.
Topsoil = 2,020 Cu. Yds.
EXCESS UNBALANCE = 0 Cu. Yds.
(After Interim Rehabilitation)

APPROXIMATE ACREAGES
WELL SITE DISTURBANCE = ± 2.737 ACRES
ACCESS ROAD DISTURBANCE = ± 1.665 ACRES
TOTAL = ± 4.402 ACRES

UINTAH ENGINEERING & LAND SURVEYING
85 So. 200 East • Vernal, Utah 84078 • (435) 789-1017

GREAT WESTERN OIL & GAS COMPANY

TYPICAL RIG LAYOUT FOR

TAILHOLT FD11-2D, FD11-6D, FD11-28D,
FD11-3D, FD11-10D, FD11-13D & FD11-17D

SECTION 11, T6N, R67W, 6th P.M.

SE 1/4 NW 1/4

FIGURE #3

SCALE: 1" = 50'

DATE: 07-30-12

DRAWN BY: J.W.

