

T6N, R67W, 6th P.M.

2000 Private Alum.
Cap. 0.5' Below Ground
Lat: 40.508975°
Long: 104.870100°

1996 Private Alum.
Cap. 0.5' Below Ground
Lat: 40.508969°
Long: 104.860653°

1993 Private Alum. Cap
0.8' Below Ground
Lot: 40.508964°
Long: 104.851206°

GREAT WESTERN OIL & GAS COMPANY

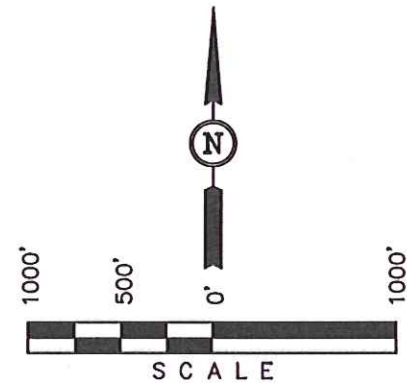
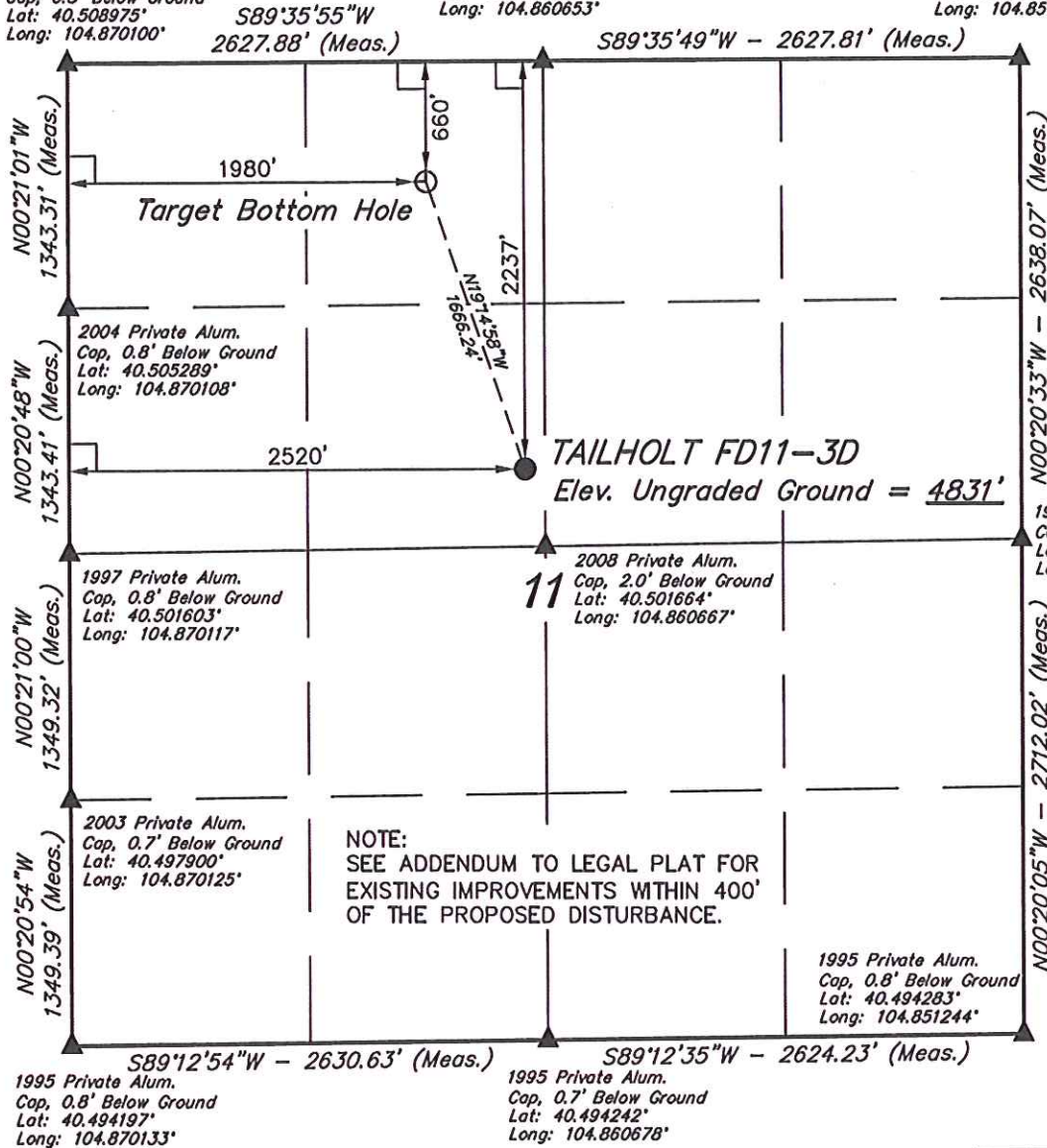
Well location, TAILHOLT FD11-3D, located as shown in the SE 1/4 NW 1/4 of Section 11, T6N, R67W, 6th P.M., Weld County, Colorado.

BASIS OF ELEVATION

USGS COOPERATIVE BASE NETWORK CONTROL STATION,
DESIGNATION 'VERMILYEA'. NGS DATA SHEET LISTS THE
NAVD 88 ELEVATION AS BEING 5026 FEET

BASIS OF BEARINGS

BASIS OF BEARINGS IS A G.P.S. OBSERVATION.






CERTIFICATE

THIS IS TO CERTIFY THAT THE ABOVE PLAT WAS PREPARED FROM
FIELD NOTES OF ACTUAL SURVEYS MADE BY ME OR UNDER MY
SUPERVISION AND THAT THE SAME ARE TRUE AND CORRECT TO THE
BEST OF MY KNOWLEDGE AND BELIEF.

REGISTERED LAND SURVEYOR
REGISTRATION NO. 17492
STATE OF COLORADO
08-07-12

LEGEND:

 = 90° SYMBOL
 = PROPOSED WELL HEAD.
 = SECTION CORNERS LOCATED.

PDOP = 2.1

NAD 83 (TARGET BOTTOM HOLE)	NAD 83 (SURFACE LOCATION)
LATITUDE = 40°30'25.78" (40.507161)	LATITUDE = 40°30'10.20" (40.502833)
LONGITUDE = 104°51'46.75" (104.862986)	LONGITUDE = 104°51'39.80" (104.861056)
NAD 27 (TARGET BOTTOM HOLE)	NAD 27 (SURFACE LOCATION)
LATITUDE = 40°30'25.85" (40.507181)	LATITUDE = 40°30'10.27" (40.502853)
LONGITUDE = 104°51'44.85" (104.862458)	LONGITUDE = 104°51'37.90" (104.860528)

UINTAH ENGINEERING & LAND SURVEYING
85 SOUTH 200 EAST - VERNAL, UTAH 84078
(435) 789-1017

SCALE 1" = 1000'	DATE SURVEYED: 07-24-12	DATE DRAWN: 07-27-12
PARTY D.N. G.W. J.W.	REFERENCES G.L.O. PLAT	
WEATHER SUNNY 90°	FILE GREAT WESTERN OIL & GAS COMPANY	