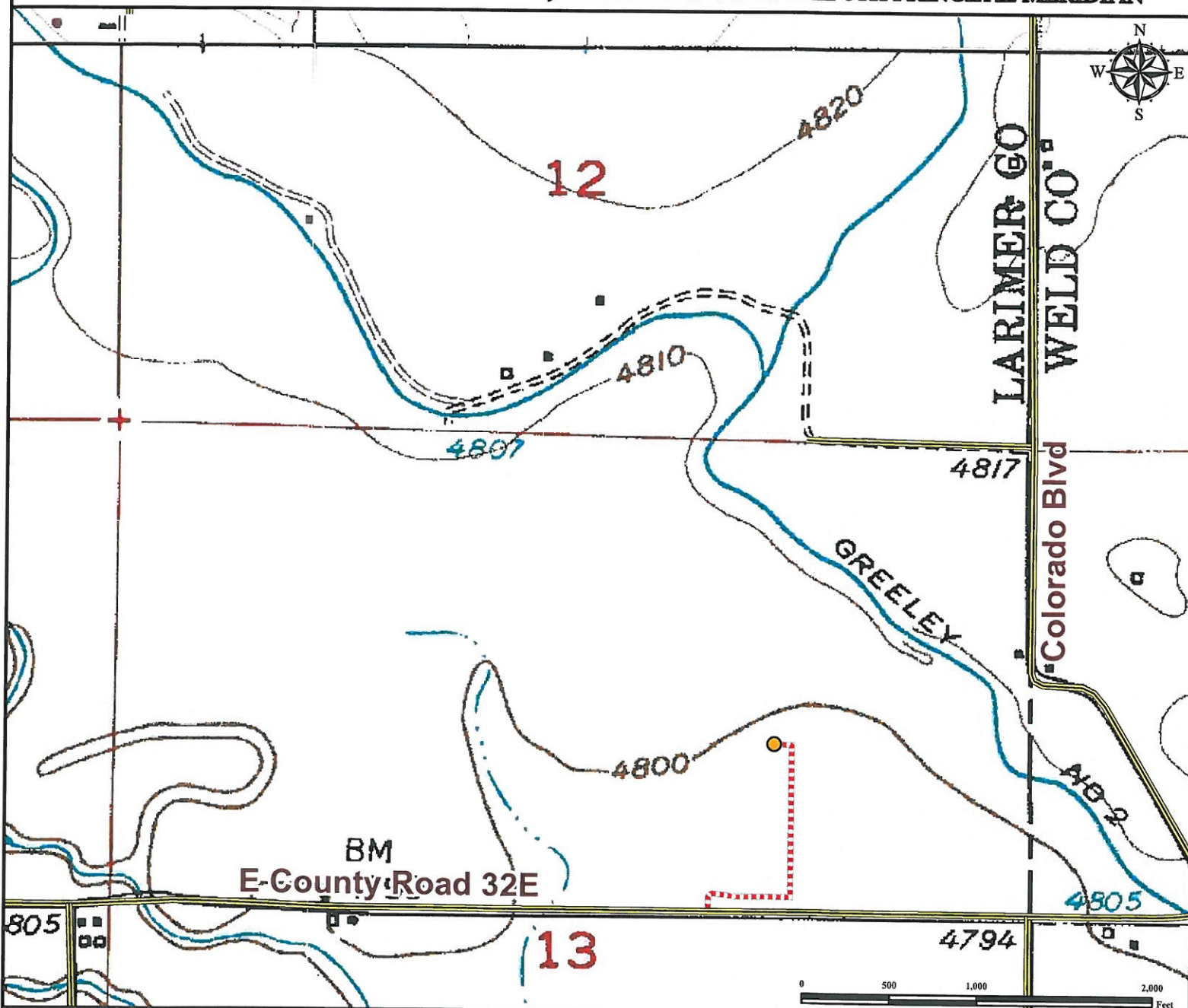


Access Road Map

RIVER BLUFFS 18-13

SW¼ NE¼ SECTION 13, TOWNSHIP 6 NORTH, RANGE 68 WEST OF THE 6TH PRINCIPAL MERIDIAN



From Windsor, CO: From the intersection of Main Street/ Highway 392 and 7th Street (Highway 257),
Drive West on Highway 392/Main St. for ±1.9 miles to Colorado Blvd/County Road 1.
Turn Right and proceed north ±0.5 miles to County Road 32E.
Turn Left and proceed West ±0.35 miles to proposed access road.
Turn Right and proceed North ±0.01 miles, then follow the road East ±0.09 miles. Continue North on access road for ±0.16 miles North. Follow access road left and drive ±0.02 miles to proposed well pad location.
 Total distance from Windsor, CO to proposed well pad location is ±3.03 miles.

Legend

● Proposed Well Pad
 ---- Proposed Access Road
 == Public Road

Reference Location

**** All Measurements are Made from Reference Well RIVER BLUFFS 18-13 ****

Lat: 40.489097° Long: -104.949351° (NAD83)
 Elevation: 4802 Feet



Use our resources to find yours!
www.petro-fs.com
 (303) 928-7128

Field Date: 03/08/2012
 Drafting Date: 09/20/2012
 Drafter: PAH
 Revision: 1

Data Sources:
 - Aerial courtesy of USGS

Prepared for:

