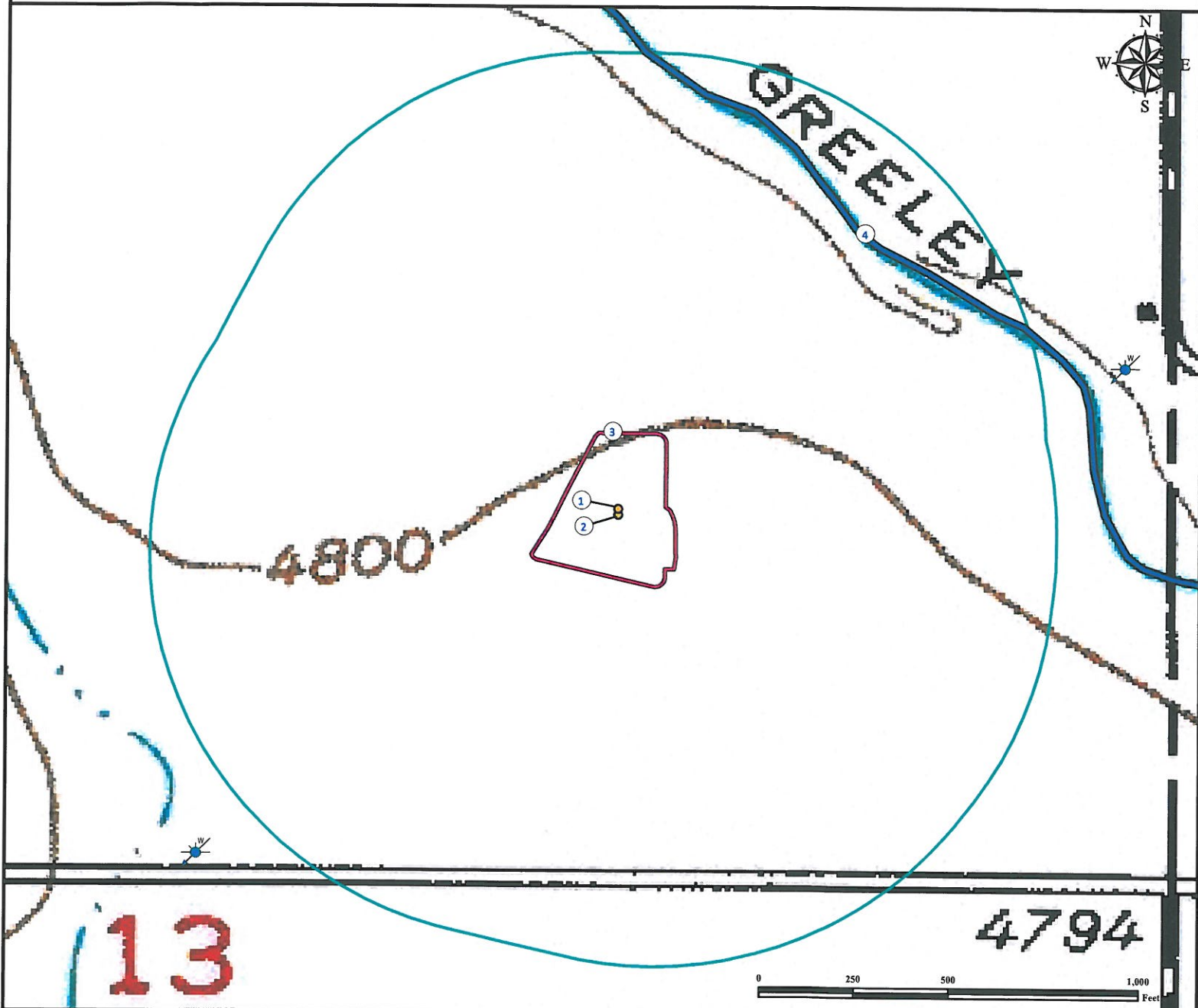


Hydrology Map

RIVER BLUFFS 18-13

SW¼ NE¼ SECTION 13, TOWNSHIP 6 NORTH, RANGE 68 WEST OF THE 6TH PRINCIPAL MERIDIAN



1. Proposed Well RIVER BLUFFS 18-13.

4. Canal is $\pm 968'$ NE.

2. Proposed Well RIVER BLUFFS 10-13.

3. Operational Disturbance Area.

Legend



Proposed Well



Disturbance Area



Canal



Water Well



1000' Radius

Reference Location

** All Measurements are Made from Reference Well RIVER BLUFFS 18-13 **

Lat: 40.489097° Long: -104.949351° (NAD83)
Elevation: 4802 Feet



Use our resources to find yours!
www.petro-fs.com
(303) 928-7128

Field Date: 03/08/2012
Drafting Date: 09/20/2012
Drafter: PAH
Revision: 1

Data Sources:
- TOPO courtesy USGS
- Water Line courtesy NHD
- Water Wells courtesy of CDOWR

Prepared for:



BAYSWATER
EXPLORATION AND PRODUCTION, LLC