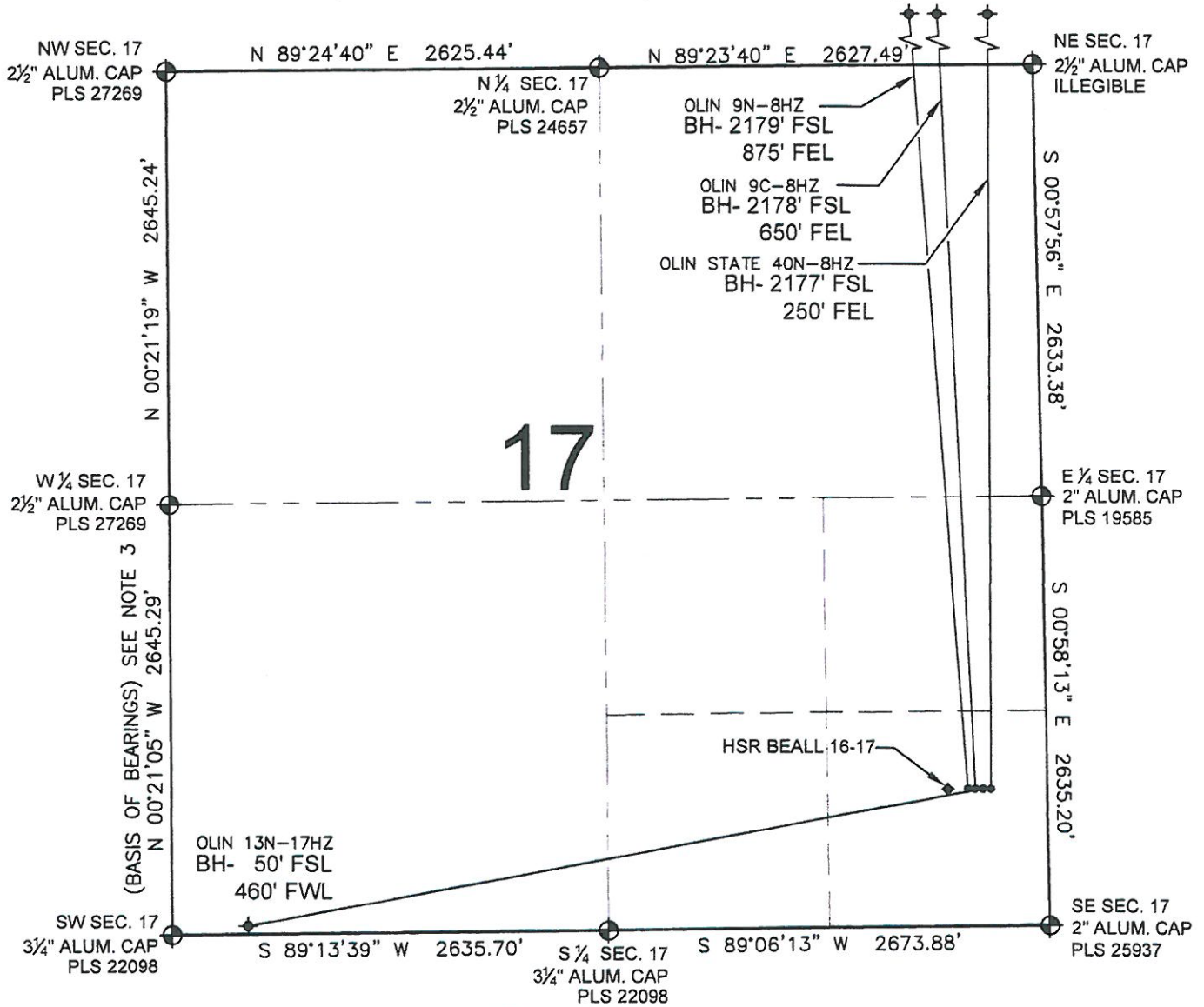


MULTI-WELL PLAN

OLIN 9C-8HZ

SECTION 17, TOWNSHIP 3 NORTH, RANGE 66 WEST, 6TH P.M.



LEGEND

- = EXISTING MONUMENT ◆ = BOTTOM HOLE BH= BOTTOM HOLE
- = PROPOSED WELL ◆ = EXISTING WELL

NOTES:

1. THIS FIELD SURVEY CONFORMS TO THE MINIMUM STANDARDS SET BY THE C.O.G.C.C., RULE NO. 215
2. HORIZONTAL POSITIONS AND ORTHOMETRIC ELEVATIONS SHOWN AT THE WELL HEAD, ARE BASED ON GPS-RTK POSITIONS DERIVED FROM MINIMUM 2-HOUR STATIC OBSERVATIONS CORRECTED BY THE NATIONAL GEODETIC SURVEY ONLINE POSITIONING USER SERVICE, O.P.U.S. DATUM: HORIZONTAL = NAD83/2007, VERTICAL = NAVD88
3. THE BASIS OF BEARINGS ARE STATE PLANE COORDINATE SYSTEM GRID BEARINGS SHOWN HEREON BETWEEN THE DESCRIBED THE MONUMENTS SHOWN HEREON.
4. GRID DISTANCES ARE SHOWN, AS MEASURED IN THE FIELD, WITH TIES TO WELLS MEASURED PERPENDICULAR TO SECTION LINES.

NOTES:

- OLIN STATE 40N-8HZ TO BE AT 842' FSL, 358' FEL.
 BOTTOM HOLE AT 2177' FSL & 250' FEL.
 OLIN 13N-17HZ TO BE AT 842' FSL, 388' FEL.
 BOTTOM HOLE AT 50' FSL & 460' FWL.
 OLIN 9C-8HZ TO BE AT 842' FSL, 418' FEL.
 BOTTOM HOLE AT 2178' FSL & 650' FEL.
 OLIN 9N-8HZ TO BE AT 842' FSL, 448' FEL.
 BOTTOM HOLE AT 2179' FSL & 875' FEL.
 HSR-BEALL 16-17 IS AT 842' FSL, 598' FEL.

PREPARED BY:



KERR-MCGEE OIL & GAS ONSHORE LP

FIELD DATE: 02-24-12	PAD NAME: OLIN 4 PAD
DRAWING DATE: 06-27-12	SURFACE LOCATION: WELD COUNTY, COLORADO
BY: KAG	REV: SMF
SE 1/4 SE 1/4, SEC. 17, T3N, R66W, 6TH P.M.	

